

Vacate a portion of NE Everett St west of NE 2nd Ave subject to certain conditions and reservations (Hearing; Ordinance, VAC-10125)



Street Vacation Process

April 19, 2023 - Agenda Item #311



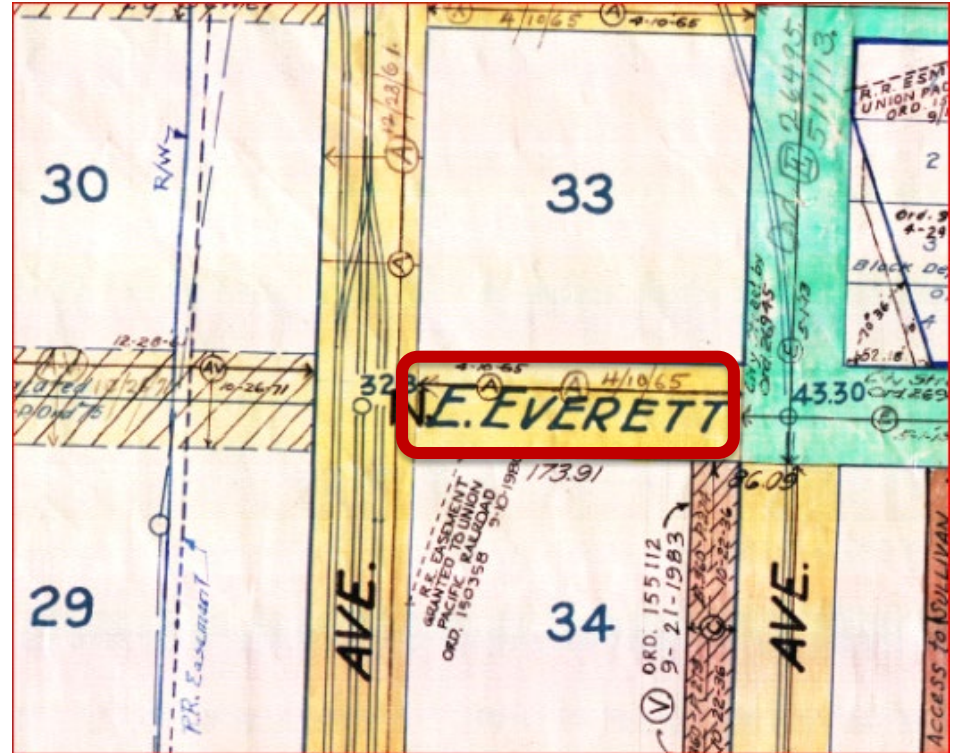
PBOT
PORTLAND BUREAU OF TRANSPORTATION

Staff presenting: Lance Lindahl, Right-of-Way Agent III

Street Vacation History

1866 - Portion of Everett Street created by Plat of East Portland. Presence of railroad tracks in adjacent portion of First Avenue has long blocked access to the west.

2019 - PBOT received request from Union Pacific to vacate portion of Everett Street.



Aerial Image of Vacation Area

Context of Surrounding Area

Industrial area underneath the I-5 / I-84 interchange at the north end of the Central Eastside Industrial District.

Union Pacific owns the parcel to the north and Pacific Coast Fruit owns the parcel to the south.



Current Conditions

NE Everett Street from NE 2nd Avenue (2/8/23)



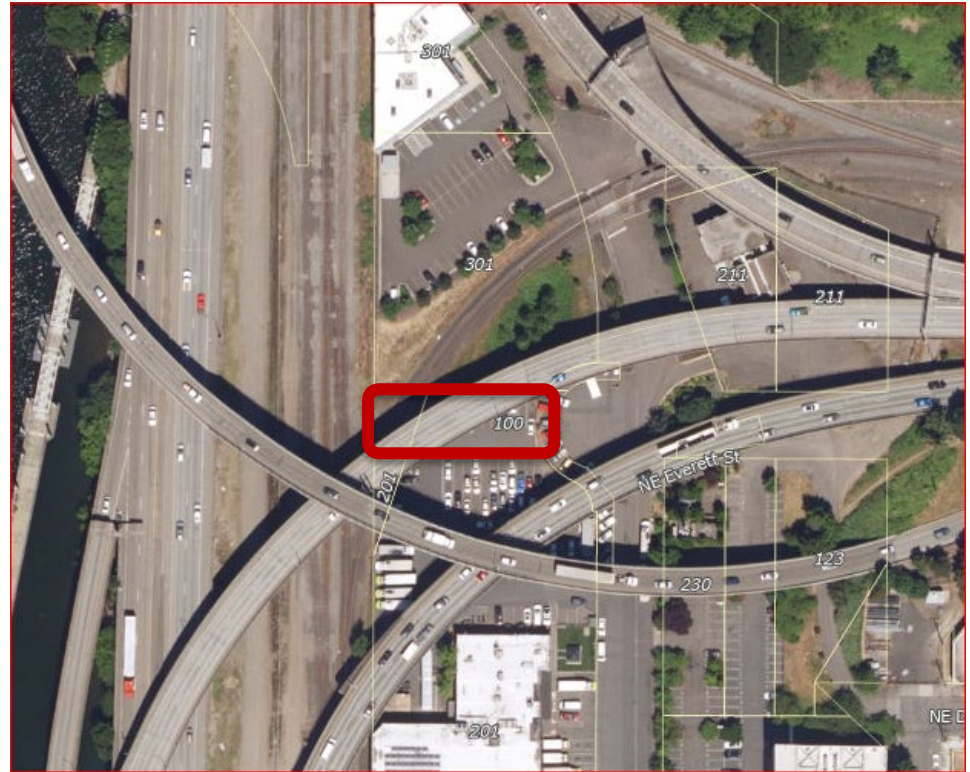
PBOT Conditions of Approval

- 1) Vacation area has been reduced in size to leave the existing cul-de-sac turnaround at its current size. This supports public parking and emergency access.
- 2) Vacation area extends to the Union Pacific right-of-way to avoid future PBOT access issues.



PBOT RWA Conditions of Approval

- 1) Union Pacific to transfer parcel in N Greeley Avenue to PBOT.
- 2) Union Pacific has reduced the City's annual rent for beautification lease area at Steel Bridge.
- 3) Union Pacific has stopped using portion of NE 2nd Ave for parking. Future option of leasing.



ODOT Conditions of Approval

Easement rights are reserved in the Ordinance for the continued use and ongoing maintenance of the existing ODOT owned freeway ramps.



Other Conditions of Approval

- 1) BDS, Land Use: A replat required for all lots that will lose street frontage.
- 2) BES: A Tunnel Easement and a Sewer Easement will be granted to the City of Portland for existing sewer facilities.



Development Plans

Area to continue to look and function much as it does today.

Reversionary rights being transferred by Union Pacific Railroad to Pacific Coast Fruit for continued use as part of their employee parking lot.





Questions