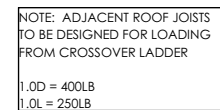
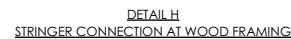
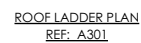
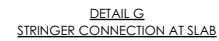
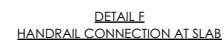
Permit #:
22-132483-DFS-01-CO

REV	DESCRIPTION	DATE
A	FOR APPROVAL	02/23/2023

TIMBERLAND

PROJECT

NWN RESOURCE CENTER

CONTRACTOR

BREMİK

DETAILER

SUPERIOR WEST

DR BY

BY _____

	JOB #
--	-------

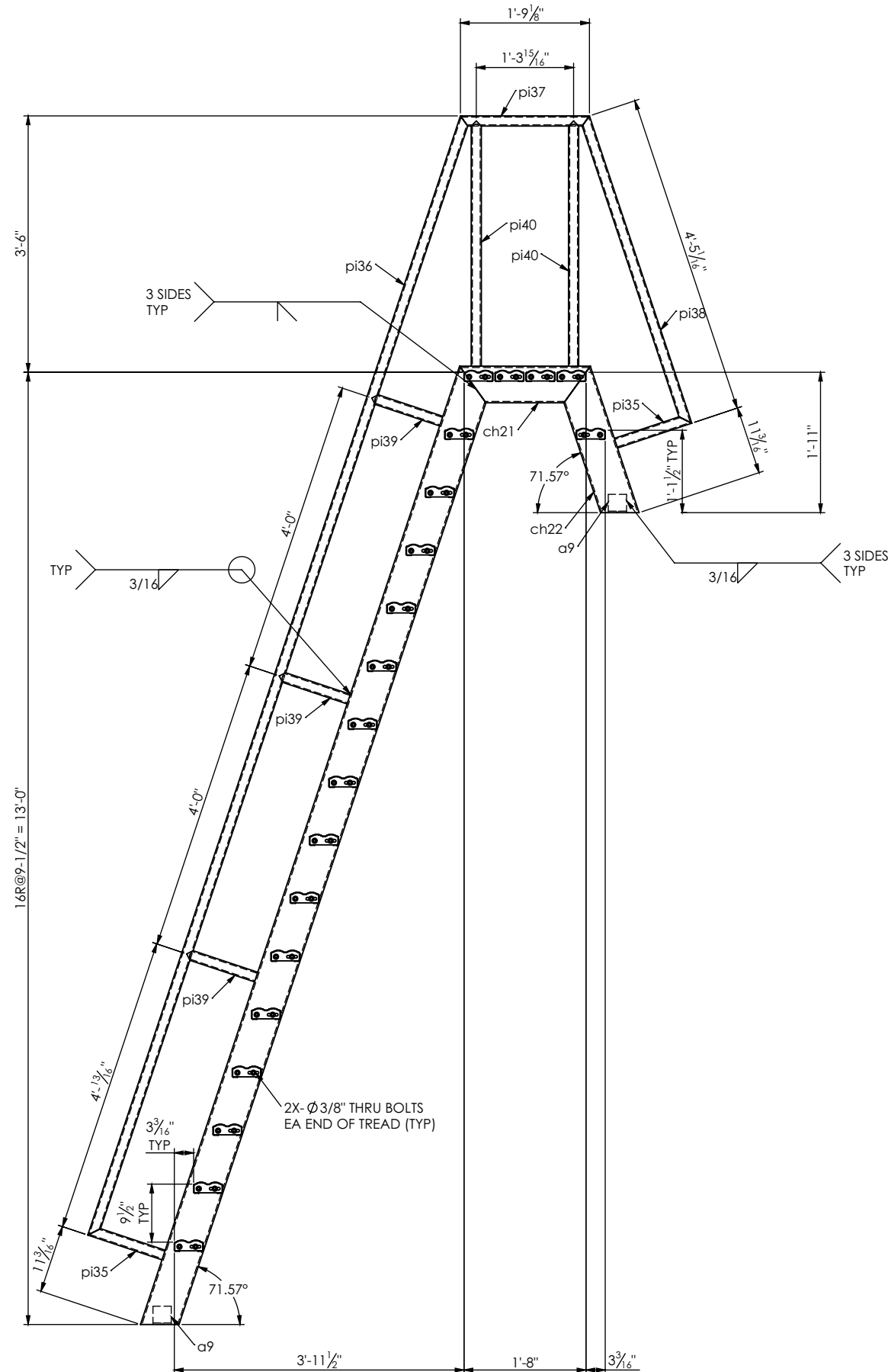
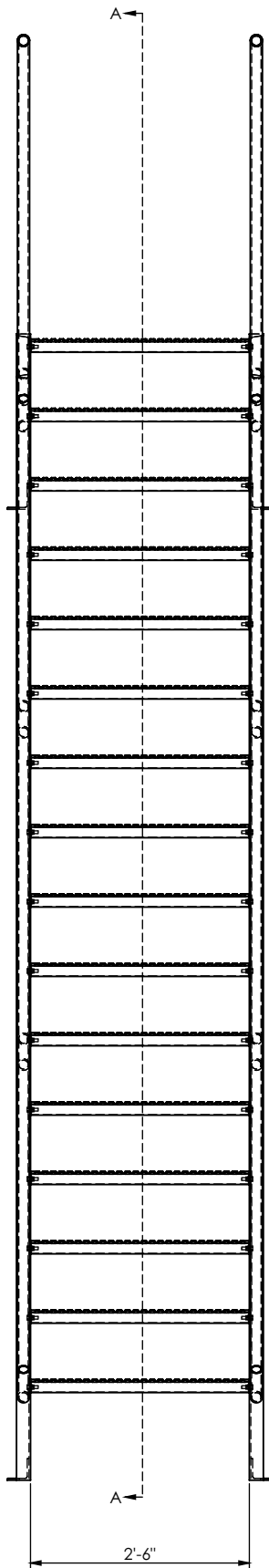
DWG NO

E05

PRJ MGR	
---------	--

R
JON CONNER

PLOT DATE: 3/6/2023



SECTION A-A

MARK	DESCRIPTION	WIDTH	LENGTH	MATERIAL	WEIGHT	QTY	REMARK
WA	3/8" WASHER	13/16"	13/16"	F436	0.01	79	
mp11	1 1/2X4 3/4" GRIP STRUT	4-3/4	2'-6"	STEEL		20	
ch20	C6X8.2	6"	13'-9 1/2"	A36	110	1	
ch21	C6X8.2	6"	1'-9 7/16"	A36	12	1	
ch22	C6X8.2	6"	2'-1 5/16"	A36	15	1	
ch23	C6X8.2	6"	13'-9 1/2"	A36	110	1	
ch24	C6X8.2	6"	2'-1 5/16"	A36	15	1	
ch25	C6X8.2	6"	1'-9 7/16"	A36	12	1	
a9	L3X3X1/4	3"	3"	A36	1	4	
pi35	1 1/4" PIPE XS	1 11/16"	1'- 13/16"	A53-B	3	4	
pi36	1 1/4" PIPE XS	1 11/16"	16'-1 1/4"	A53-B	48	2	
pi37	1 1/4" PIPE XS	1 3/4"	1'-9 1/8"	A53-B	5	2	
pi38	1 1/4" PIPE XS	1 11/16"	4'-5 1/16"	A53-B	13	2	
pi39	1 1/4" PIPE XS	1 11/16"	1'	A53-B	3	6	
pi40	1 1/4" PIPE XS	1 11/16"	3'-4 3/16"	A53-B	10	4	
BOLT	3/8" BOLT	3/8"	1 1/4"	A307	0.06	80	
NUT	3/8" NUT	9/16"	5/8"	A563	0.014	79	

NOTE: FIELD VERIFY ALL DIMENSIONS BEFORE FABRICATION

This review is only for general conformance with the design concept of the project and with the information given in the contract documents.

☒ NO EXCEPTIONS TAKEN ☐ REVISE & RESUBMIT

☐ MAKE CORRECTIONS NOTED ☐ SUBMIT SPECIFIED ITEM

Checking does not relieve the contractor of the responsibility for errors and omissions in the submittal or for fabrication, installation or safety methods, verification of dimensions and quantities, or the coordination with other aspects of the work.

DATE: 03/24/2023 BY: ELD
MILLER CONSULTING ENGINEERS, INC.

City of Portland

Reviewed for Code Compliance

Date: 04/10/23

Permit #:
22-132483-DFS-01-CO



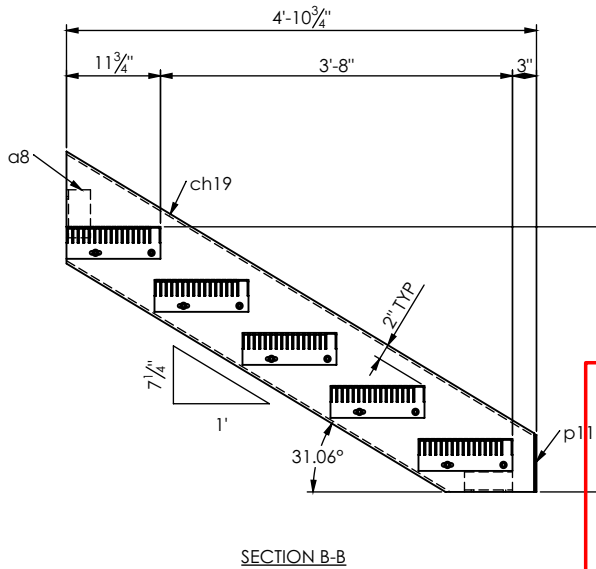
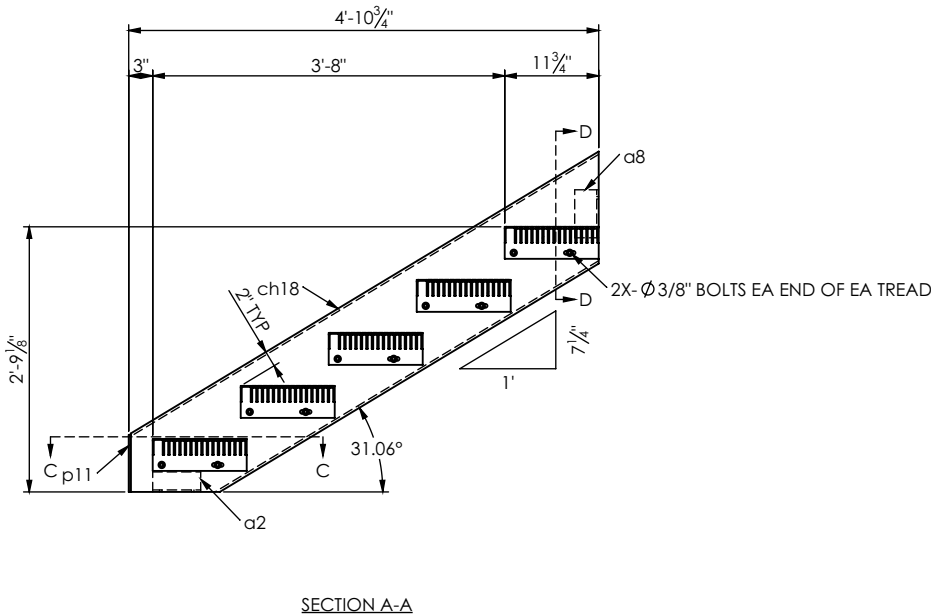
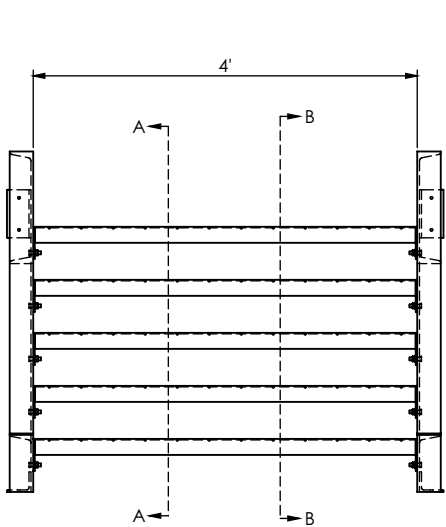
EXPIRES: 6-30-2024

QTY: 1 - M9 STRUCTURAL ONLY
MCE PROJECT 230196

TIMBERLAND

PROJECT NWN RESOURCE CENTER				REFERENCE	
ITEM ROOF LADDER				FINISH NONE	
CONTRACTOR BREMIK				WEIGHT 570 LBS	DETAILER SUPERIOR WEST
DR BY TSP	CHK BY	JOB #	DWG NO M9	PRJ MGR JON CONNER	

MARK	DESCRIPTION	WIDTH	LENGTH	MATERIAL	WEIGHT	QTY	REMARK
ch18	C12X20.7	1'	6'- 1/16"	A36	110	1	
ch19	C12X20.7	1'	6'- 1/16"	A36	110	1	
mp10	3/16X11W4X2 BAR GRATING TREAD	1'- 1/8"	4'	ASTM A36	93	5	
BOLT	3/8" BOLT	3/8"	1 1/4"	A307	0.06	20	
NUT	3/8" NUT	9/16"	5/8"	A563	0.014	20	
WA	3/8" WASHER	13/16"	13/16"	F436	0.01	20	
a2	L3X3X1/4	3"	6"	A36	2	2	
p11	PL 1/4"X2 15/16"	2 15/16"	7 1/8"	A36	1	2	
a8	L3X3X1/4	3"	6"	A36	2	2	



City of Portland
Reviewed for Code Compliance
Date: 04/10/23
Permit #:
22-132483-DFS-01-CO



EXPIRES: 6-30-2024

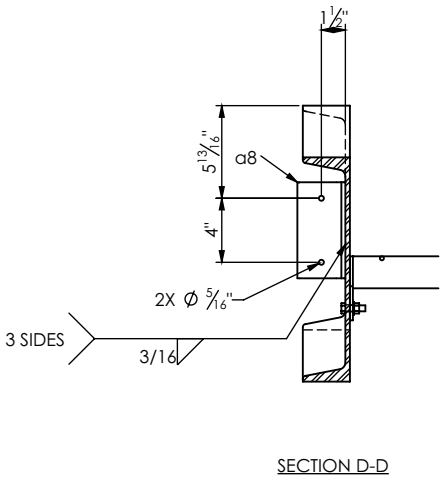
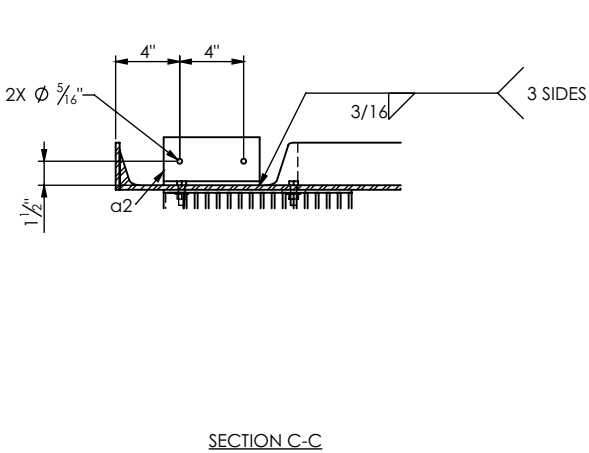
STRUCTURAL ONLY
MCE PROJECT 230196

QTY: 1 - ST2

TIMBERLAND

PROJECT NWN RESOURCE CENTER				REFERENCE	
ITEM STAIRS				FINISH GALV	
CONTRACTOR BREMIK				WEIGHT 698 LBS	DETAILER SUPERIOR WEST
DR BY TSP	CHK BY	JOB #	DWG NO ST2	PRJ MGR JON CONNER	

REV	DESCRIPTION	DATE
A	FOR APPROVAL	02/23/2023



This review is only for general conformance with the design concept of the project and with the information given in the contract documents.

☒ NO EXCEPTIONS TAKEN ☐ REVISE & RESUBMIT
☐ MAKE CORRECTIONS NOTED ☐ SUBMIT SPECIFIED ITEM

Checking does not relieve the contractor of the responsibility for errors and omissions in the submittal or for fabrication, installation or safety methods, verification of dimensions and quantities, or the coordination with other aspects of the work.

DATE: 03/24/2023 BY: ELD
MILLER CONSULTING ENGINEERS, INC.