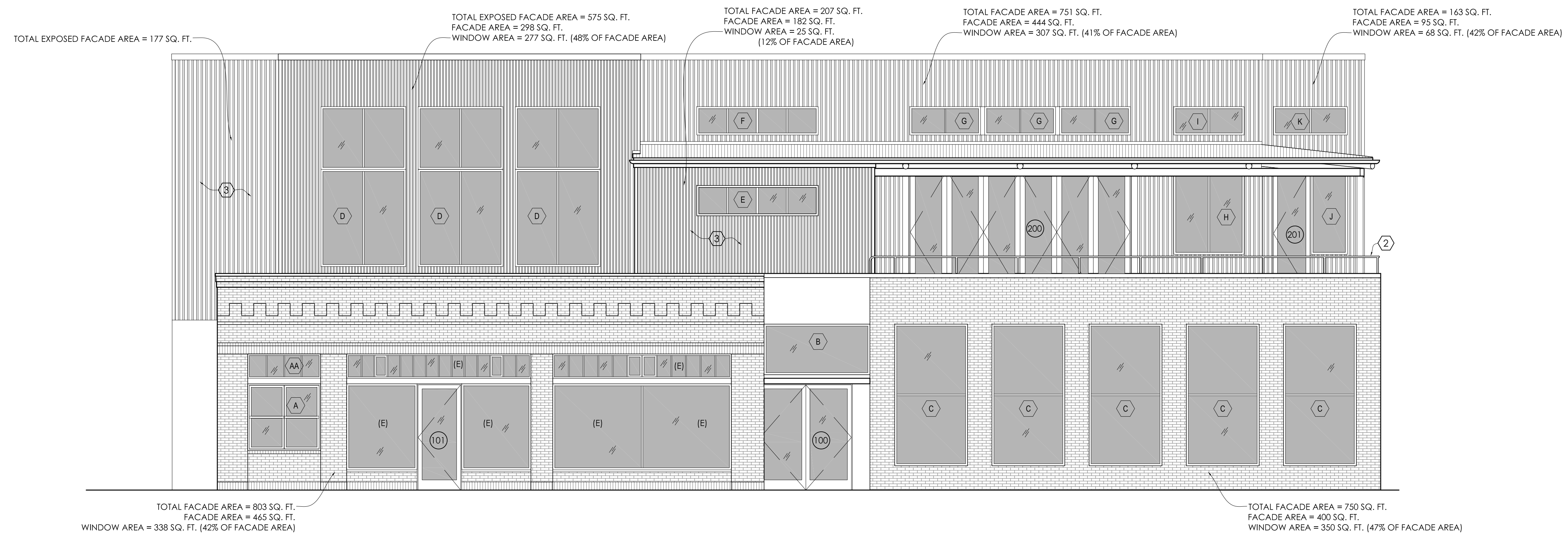


**KEY NOTES**

- ① EXISTING MASONRY WALL
- ② BALCONY GUARDRAIL
- ③ NEW SECOND FLOOR WALLS BEYOND
- ④ NEW STAIRS AND SEATING TO SECOND FLOOR BALCONY AREA ABOVE
- ⑤ EXISTING TROLLEY CAR LOFTS BUILDING, ADJACENT TO SOUTH SIDE OF SITE. SEE EXHIBIT 4
- ⑥ SOUTH PROPERTY LINE
- ⑦ NEW LANDSCAPE PLANTER,  $\frac{3}{4}$ " METAL PLATE ( $\frac{3}{4}$ " = PLANTER WALL THICKNESS), POWDER COATED, ALL SIDES. PLANTS TO INCLUDE:
  - EVERGREEN SHRUBS AT 4'-0" TO FORM A SCREEN 6' HIGH
  - (1) SMALL DECIDUOUS OR EVERGREEN TREE
  - GROUND COVER TO FULLY COVER PLANTER AREA(All plants shall comply with the requirements the suggested plant lists for required Landscaping manual)
- ⑧ SECOND FLOOR LANDSCAPE PLANTER: ALL LANDSCAPE PLANTERS AT SECOND FLOOR BALCONIES/ ROOF TOP DECKS TO BE  $\frac{3}{4}$ " METAL PLATE (PLANTER WALL THICKNESS), POWDER COATED, ALL SIDES. PLANTS TO INCLUDE EVERGREEN SHRUBS AT 2'-6" O.C. TO FORM A SCREEN 3' HIGH
- ⑨ SECOND FLOOR PLANTER AT SOUTH SIDE OF LOWER ROOF DECK AND OUTDOOR STAIRS: (5) 9'-8" x 4'-0" PLANTERS TO BE  $\frac{3}{4}$ " METAL PLATE (PLANTER WALL THICKNESS), POWDER COATED, ALL SIDES. PLANTS TO BE EVERGREEN SHRUBS AT 3'-6" O.C. TO FORM A SCREEN 6' HIGH
- ⑩ STEEL FENCE WITH (2) PEDESTRIAN GATES AND (1) LOADING GATE. LOCKABLE PEDESTRIAN GATE W/ EXTERIOR GRADE LATCH AND HARDWARE (GATE TO REMAIN UNLOCKED DURING BUSINESS HOURS. PANIC EXIT HARDWARE ON EGRESS SIDE OF GATE, TYP.
- ⑪ HINGED STEEL GATE / SCREEN AT WEST SIDE OF ELECTRIC METERS AND TRASH AREA

**1 EAST ELEVATION**  
1/4" = 1'-0"

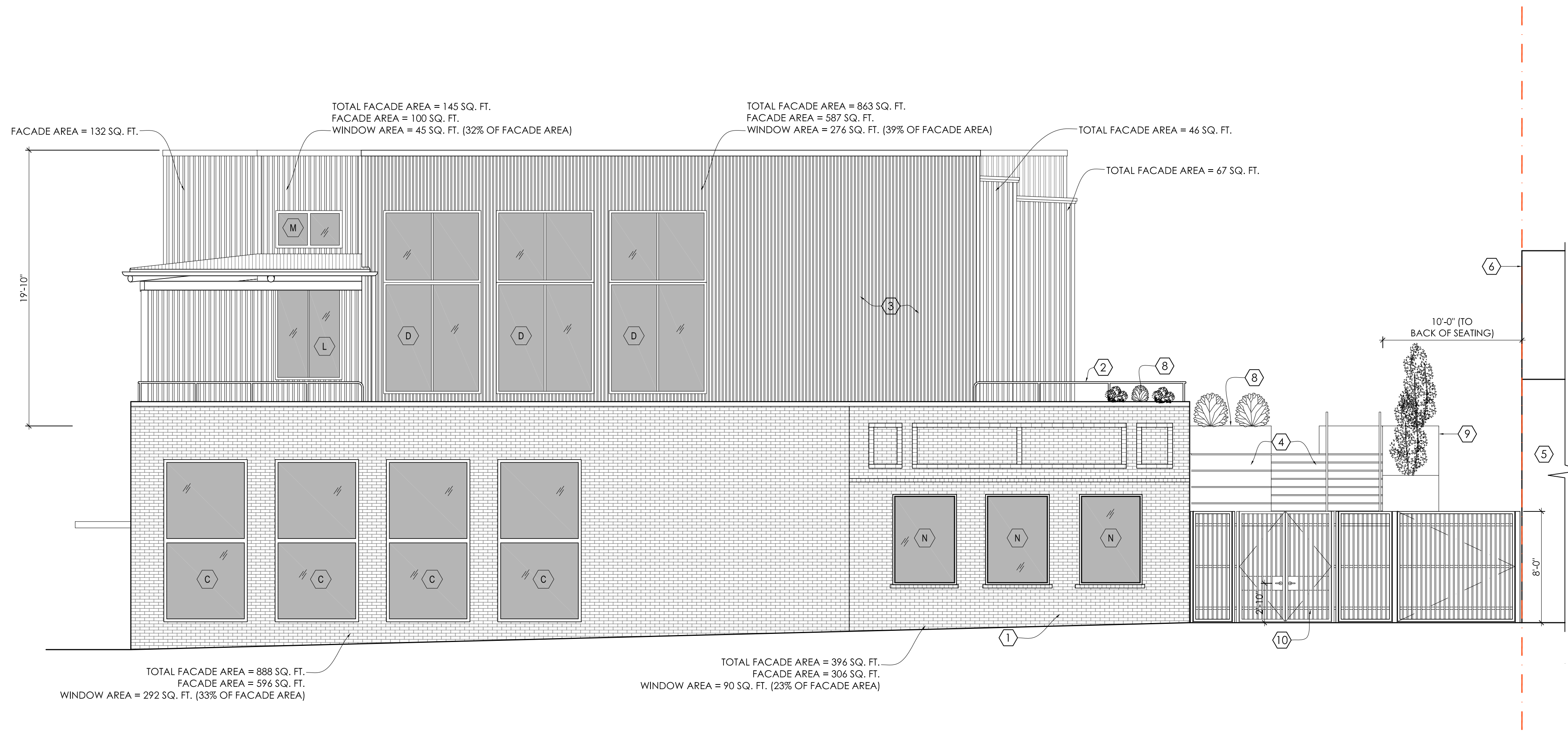


**2 NORTH ELEVATION**  
1/4" = 1'-0"

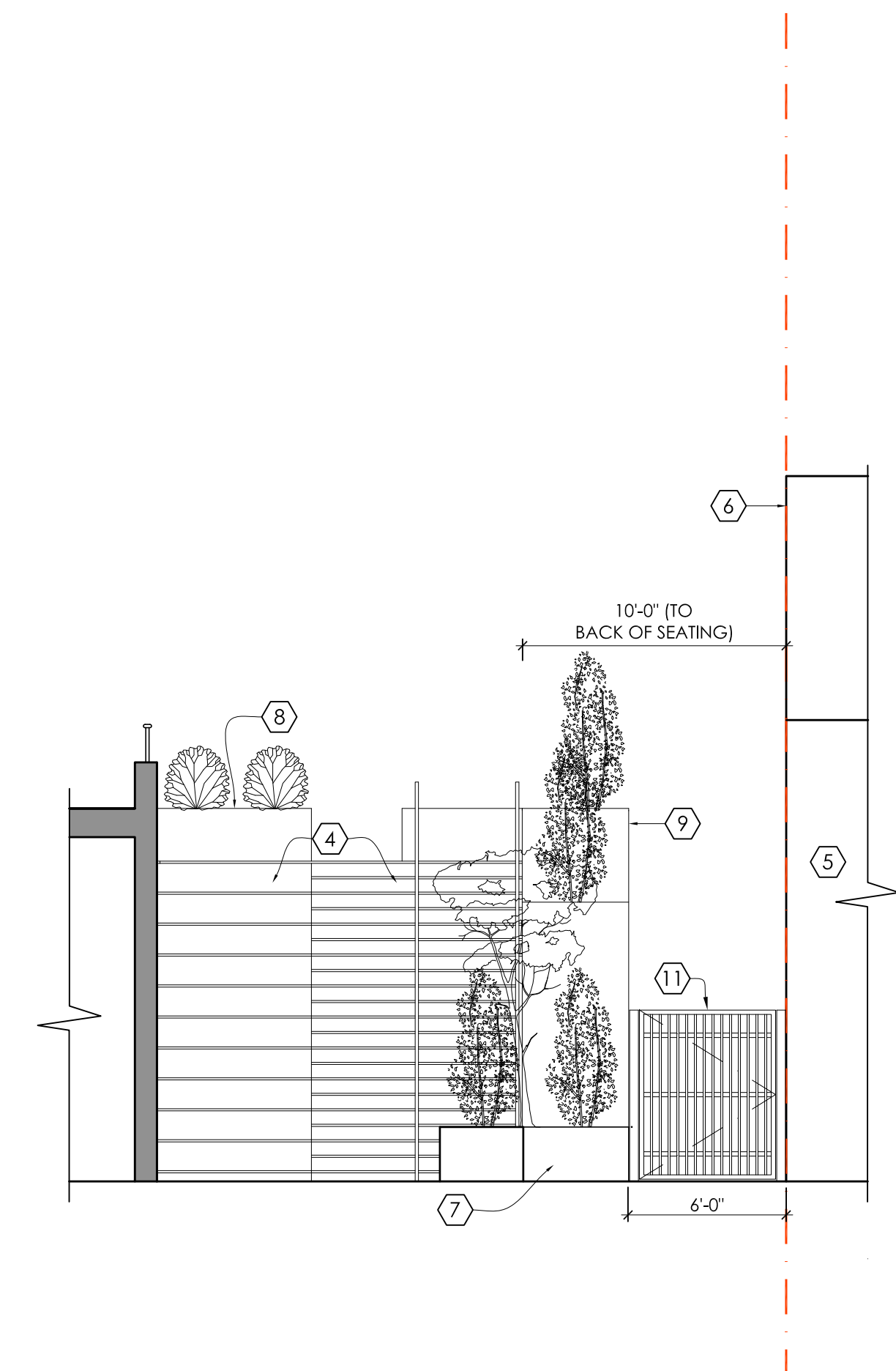
**EXTERIOR ELEVATIONS**

Design Development  
April 13, 2023  
Thurman Food Hall  
2774-2788 NW Thurman St.  
Portland, OR

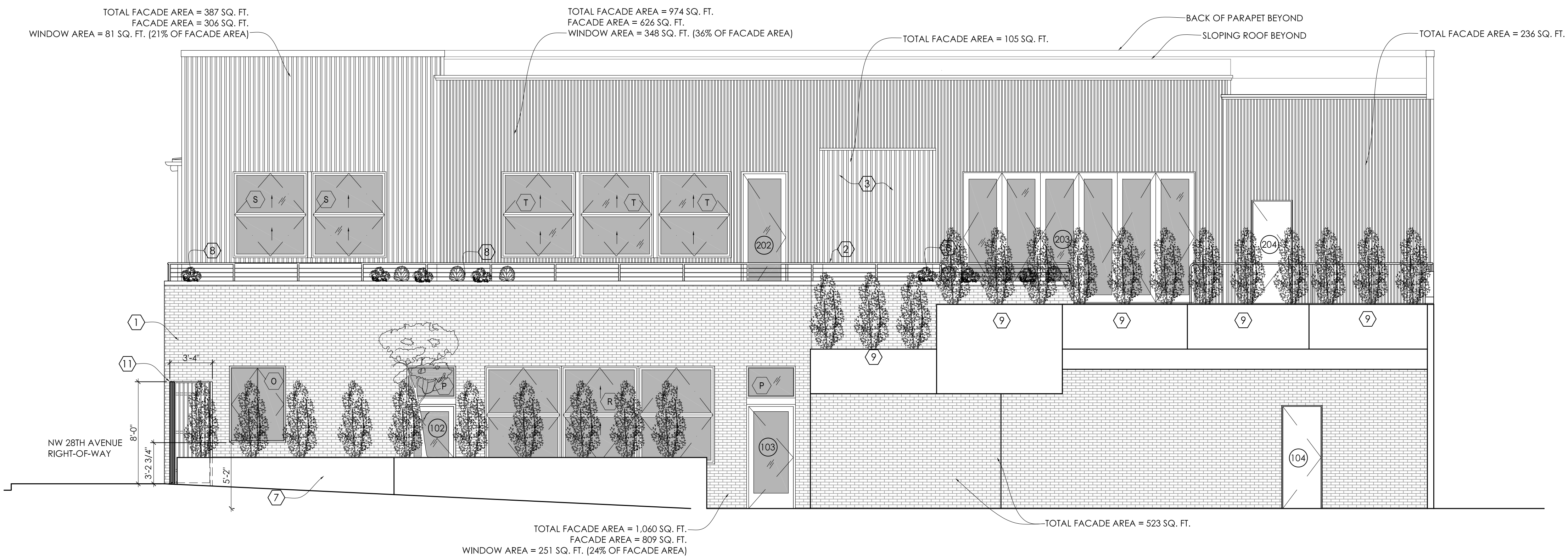
**A3.1**



1 WEST ELEVATION (AT R.O.W.)  
3/16" = 1'-0"



3 WEST ELEVATION (WITHIN COURTYARD)  
3/16" = 1'-0"



2 SOUTH ELEVATION  
3/16" = 1'-0"

KEY NOTES

- 1 EXISTING MASONRY WALL
- 2 BALCONY GUARDRAIL
- 3 NEW SECOND FLOOR WALLS BEYOND
- 4 NEW STAIRS AND SEATING TO SECOND FLOOR BALCONY AREA ABOVE
- 5 EXISTING TROLLEY CAR LOFTS BUILDING, ADJACENT TO SOUTH SIDE OF SITE. SEE EXHIBIT 4
- 6 SOUTH PROPERTY LINE
- 7 NEW LANDSCAPE PLANTER, 3/4" METAL PLATE (3/8" = PLANTER WALL THICKNESS), POWDER COATED, ALL SIDES. PLANTS TO INCLUDE:
  - EVERGREEN SHRUBS AT 4'-0" TO FORM A SCREEN 6' HIGH
  - (1) SMALL DECIDUOUS OR EVERGREEN TREE
  - GROUND COVER TO FULLY COVER PLANTER AREA
  - (All plants shall comply with the requirements the Suggested plant lists for required Landscaping manual)
- 8 SECOND FLOOR LANDSCAPE PLANTER: ALL LANDSCAPE PLANTERS AT SECOND FLOOR BALCONIES/ ROOF TOP DECKS TO BE 3/4" METAL PLATE (PLANTER WALL THICKNESS), POWDER COATED, ALL SIDES. PLANTS TO INCLUDE EVERGREEN SHRUBS AT 2'-6" O.C. TO FORM A SCREEN 3' HIGH
- 9 SECOND FLOOR PLANTER AT SOUTH SIDE OF LOWER ROOF DECK AND OUTDOOR STAIRS: (5) 9'-8" x 4'-0" PLANTERS TO BE 3/4" METAL PLATE (PLANTER WALL THICKNESS), POWDER COATED, ALL SIDES. PLANTS TO BE EVERGREEN SHRUBS AT 3'-6" O.C. TO FORM A SCREEN 6' HIGH
- 10 STEEL FENCE WITH (2) PEDESTRIAN GATES AND (1) LOADING GATE. LOCKABLE PEDESTRIAN GATE W/ EXTERIOR GRADE LATCH AND HARDWARE (GATE TO REMAIN UNLOCKED DURING BUSINESS HOURS. PANIC EXIT HARDWARE ON EGRESS SIDE OF GATE, TYP.
- 11 HINGED STEEL GATE / SCREEN AT WEST SIDE OF ELECTRIC METERS AND TRASH AREA

EXTERIOR ELEVATIONS

Design Development  
April 13, 2023  
Thurman Food Hall  
2774-2788 NW Thurman St.  
Portland, OR

A3.2