

1 EAST ELEVATION
3/16" = 1'-0"

Approved
 City of Portland
 Bureau of Development Services
 Planner **David Besley**
 Date **2/28/23**
 * This approval applies only to the reviews requested and is subject to all conditions of approval. Additional zoning requirements may apply.

- KEY NOTES**
- 1 EXISTING MASONRY WALL
 - 2 BALCONY GUARDRAIL
 - 3 NEW SECOND FLOOR WALLS BEYOND
 - 4 NEW STAIRS AND SEATING TO SECOND FLOOR BALCONY AREA ABOVE
 - 5 EXISTING TROLLEY CAR LOFTS BUILDING, ADJACENT TO SOUTH SIDE OF SITE. SEE EXHIBIT 4
 - 6 SOUTH PROPERTY LINE
 - 7 NEW LANDSCAPE PLANTER: $\frac{3}{16}$ " METAL PLATE ($\frac{3}{16}$ " = PLANTER WALL THICKNESS), POWDER COATED, ALL SIDES. PLANTS TO INCLUDE:
 - EVERGREEN SHRUBS AT 4'-0" TO FORM A SCREEN 6' HIGH
 - (1) SMALL DECIDUOUS OR EVERGREEN TREE
 - GROUND COVER TO FULLY COVER PLANTER AREA
 (All plants shall comply with the requirements the Suggested plant lists for required Landscaping manual)
 - 8 SECOND FLOOR LANDSCAPE PLANTER: LANDSCAPE PLANTER AT SECOND FLOOR BALCONY/ ROOF TOP DECK TO BE $\frac{3}{16}$ " METAL PLATE (PLANTER WALL THICKNESS), POWDER COATED, ALL SIDES. PLANTS TO BE EVERGREEN SHRUBS AT 2'-6" O.C. TO FORM A SCREEN 3' HIGH
 - 9 SECOND FLOOR PLANTER AT SOUTH SIDE OF LOWER ROOF DECK: (3) 9'-8" x 4'-0" PLANTERS TO BE $\frac{3}{16}$ " METAL PLATE (PLANTER WALL THICKNESS), POWDER COATED, ALL SIDES. PLANTS TO BE EVERGREEN SHRUBS AT 3'-6" O.C. TO FORM A SCREEN 6' HIGH
 - 10 PLANTER AT SOUTH SIDE OF STADIUM SEATING: (2) 9'-10" x 4'-0" PLANTERS TO BE $\frac{3}{16}$ " METAL PLATE (PLANTER WALL THICKNESS), POWDER COATED, ALL SIDES. PLANTS TO BE EVERGREEN SHRUBS AT 3'-6" O.C. TO FORM A SCREEN 6' HIGH



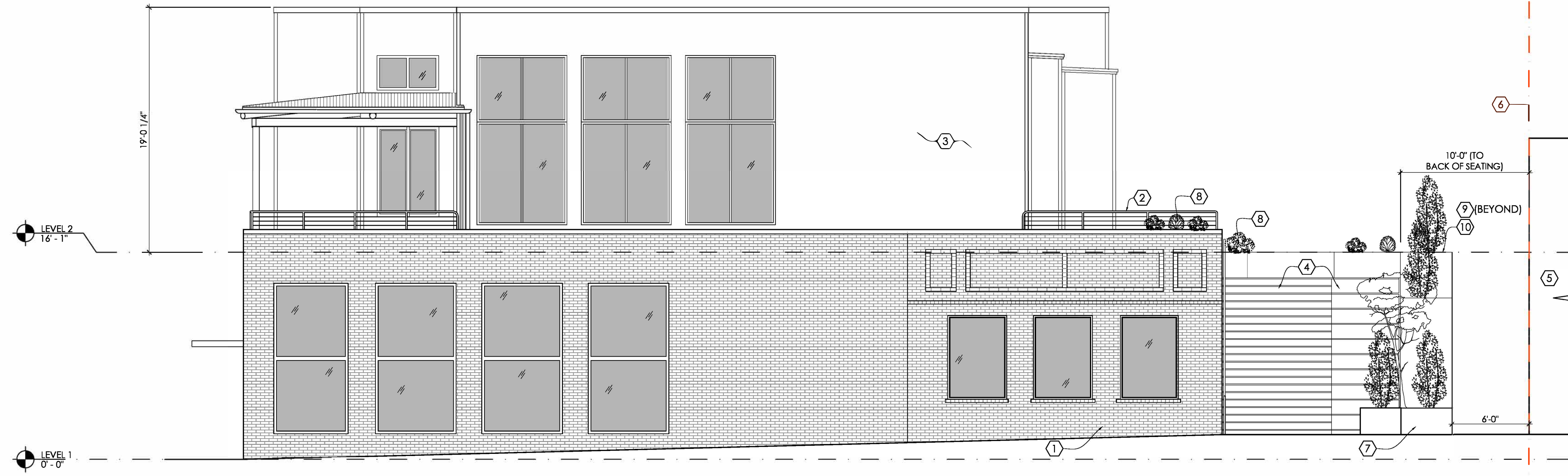
2 NORTH ELEVATION
3/16" = 1'-0"

EXTERIOR ELEVATIONS

Zoning Adjustment
 February 7, 2023
 Thurman Food Hall
 2774-2788 NW Thurman St.
 Portland, OR

A3.1

Exh. C.3
 LU 22-159396 AD

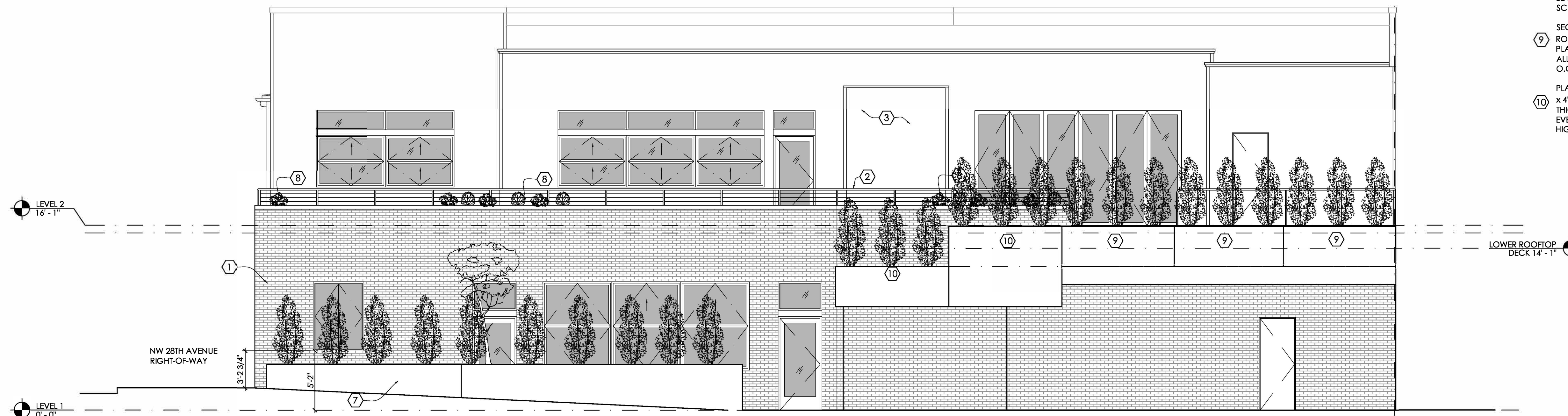


1 WEST ELEVATION
3/16" = 1'-0"

Approved
City of Portland
Bureau of Development Services
Planner **David Besley**
Date **2/28/23**
* This approval applies only to the reviews requested and is subject to all conditions of approval. Additional zoning requirements may apply.

KEY NOTES

- 1 EXISTING MASONRY WALL
- 2 BALCONY GUARDRAIL
- 3 NEW SECOND FLOOR WALLS BEYOND
- 4 NEW STAIRS AND SEATING TO SECOND FLOOR BALCONY AREA ABOVE
- 5 EXISTING TROLLEY CAR LOFTS BUILDING, ADJACENT TO SOUTH SIDE OF SITE, SEE EXHIBIT 4
- 6 SOUTH PROPERTY LINE
- 7 NEW LANDSCAPE PLANTER, 3/8" METAL PLATE (3/8" = PLANTER WALL THICKNESS), POWDER COATED, ALL SIDES. PLANTS TO INCLUDE:
- EVERGREEN SHRUBS AT 4'-0" TO FORM A SCREEN 6' HIGH
- (1) SMALL DECIDUOUS OR EVERGREEN TREE
- GROUND COVER TO FULLY COVER PLANTER AREA
(All plants shall comply with the requirements the suggested plant lists for required Landscaping manual)
- 8 SECOND FLOOR LANDSCAPE PLANTER: LANDSCAPE PLANTER AT SECOND FLOOR BALCONY/ ROOF TOP DECK TO BE 3/8" METAL PLATE (PLANTER WALL THICKNESS), POWDER COATED, ALL SIDES. PLANTS TO BE EVERGREEN SHRUBS AT 2'-6" O.C. TO FORM A SCREEN 3' HIGH
- 9 SECOND FLOOR PLANTER AT SOUTH SIDE OF LOWER ROOF DECK: (3) 9'-8" x 4'-0" PLANTERS TO BE 3/8" METAL PLATE (PLANTER WALL THICKNESS), POWDER COATED, ALL SIDES. PLANTS TO BE EVERGREEN SHRUBS AT 3'-6" O.C. TO FORM A SCREEN 6' HIGH
- 10 PLANTER AT SOUTH SIDE OF STADIUM SEATING: (2) 9'-10" x 4'-0" PLANTERS TO BE 3/8" METAL PLATE (PLANTER WALL THICKNESS), POWDER COATED, ALL SIDES. PLANTS TO BE EVERGREEN SHRUBS AT 3'-6" O.C. TO FORM A SCREEN 6' HIGH



2 SOUTH ELEVATION
3/16" = 1'-0"

EXTERIOR ELEVATIONS

Zoning Adjustment
February 7, 2023
Thurman Food Hall
2774-2788 NW Thurman St.
Portland, OR

A3.2

Exh. C.3
LU 22-159396 AD