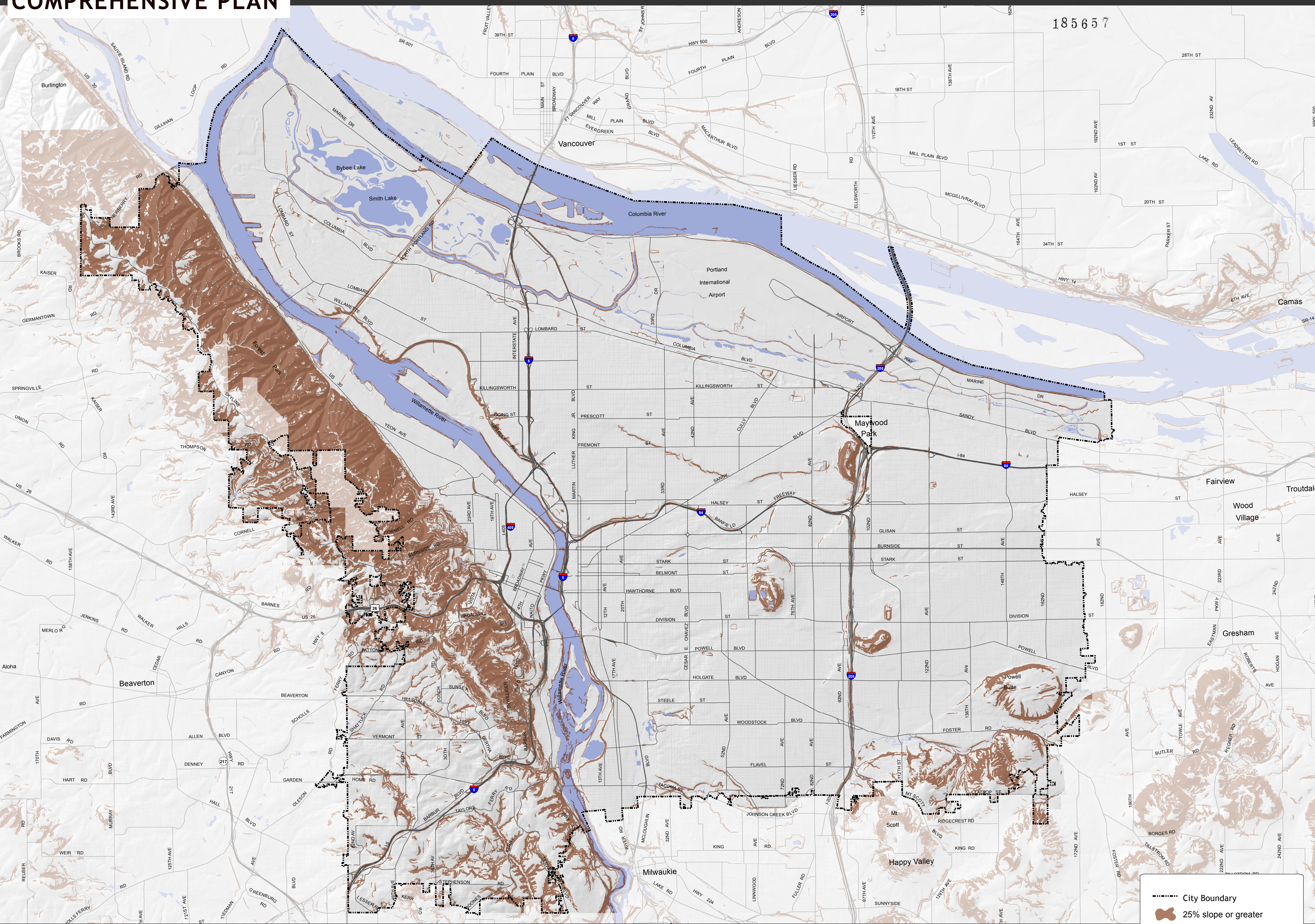




Steep Slopes (Twenty-five Percent or More)- HAZ-08

BUILDABLE LANDS

COMPREHENSIVE PLAN

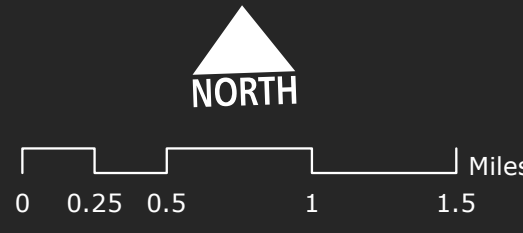


185657

-  City Boundary
-  25% slope or greater

Slope developed by Bureau of Planning and Sustainability from LiDAR data (2004 - 2009).

Ord. 187831, Vol. 1.1.H, page 130



Bureau of Planning and Sustainability
 Innovation. Collaboration. Practical Solutions.
 City of Portland, Oregon
 Charlie Hales, Mayor • Susan Anderson, Director



May 31, 2016 City of Portland | Bureau of Planning and Sustainability | Geographic Information System
 The information on the map was derived from digital data-bases on the City of Portland, Bureau of Planning and Sustainability GIS. Care was taken in the creation of this map but it is provided "as is". The City of Portland cannot accept any responsibility for error, omissions, or positional accuracy, and therefore, there are no warranties which accompany this product. However, notification of any errors will be appreciated.
 This work was supported in part by a periodic review grant from the Oregon Department of Land Conservation and Development.