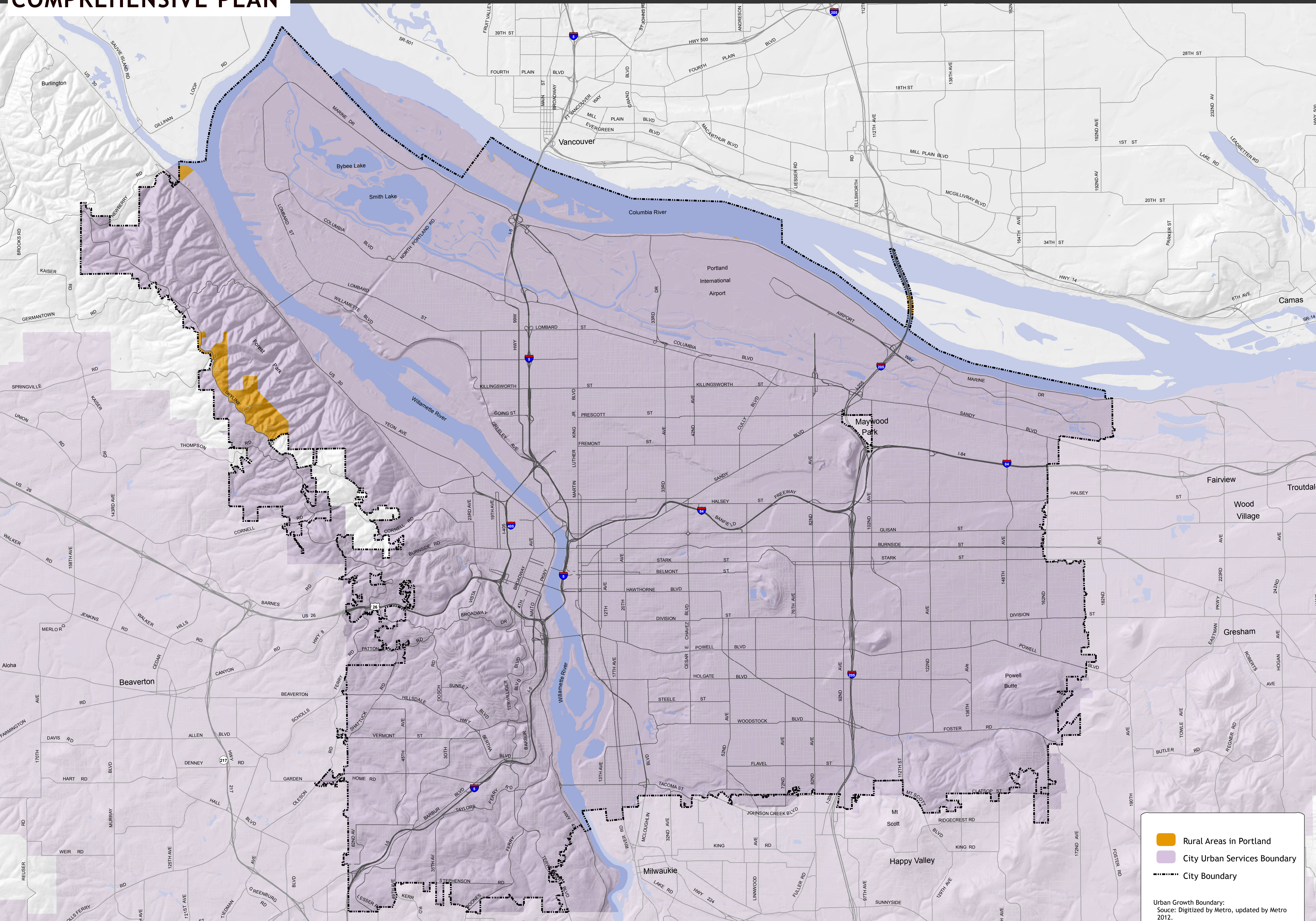


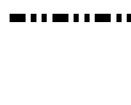


## COMPREHENSIVE PLAN



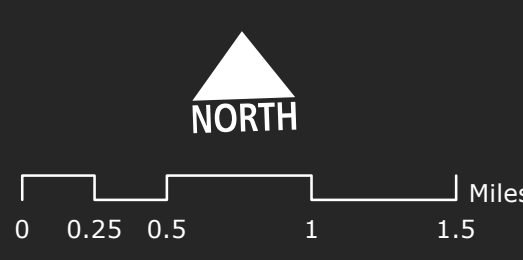
**Rural Areas in Portland**  
 Rural Areas in Portland

**City Urban Services Boundary**  
 City Urban Services Boundary

**City Boundary**  
 City Boundary

Urban Growth Boundary:  
 Source: Digitized by Metro, updated by Metro 2012.

City Boundary:  
 Digitized and updated by PDOT and Bureau of Planning and Sustainability, 2012.  
 Registered to taxlot base maps.



**Bureau of Planning and Sustainability**  
 Innovation. Collaboration. Practical Solutions.

City of Portland, Oregon  
 Sam Adams, Mayor • Susan Anderson, Director



June 5, 2012 City of Portland | Bureau of Planning and Sustainability | Geographic Information System

The information on the map was derived from digital data-bases on the City of Portland, Bureau of Planning and Sustainability GIS. Care was taken in the creation of this map but it is provided "as is". The City of Portland cannot accept any responsibility for error, omissions, or positional accuracy, and therefore, there are no warranties which accompany this product. However, notification of any errors will be appreciated.

This work was supported in part by a periodic review grant from the Oregon Department of Land Conservation and Development.