

working for clean rivers



BES On-Call Temporary Modeling Support Contracts

Shannon Reynolds | BES Integrated Planning | Bureau of Environmental Services

September 21, 2022



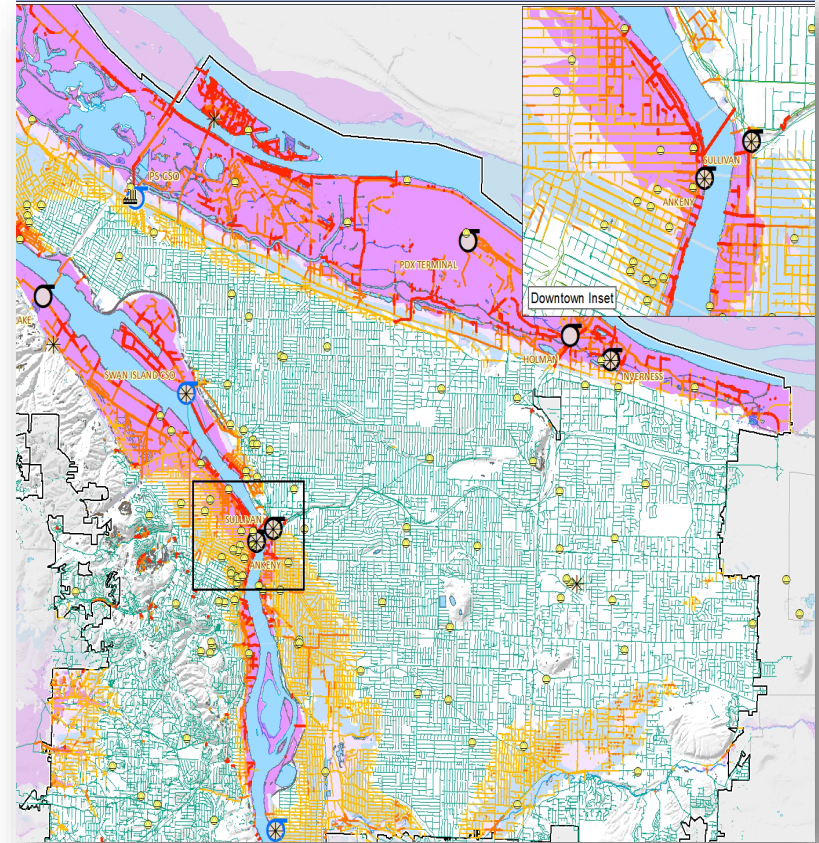
ENVIRONMENTAL SERVICES
CITY OF PORTLAND

MINGUS MAPPS, COMMISSIONER
DAWN UCHIYAMA, INTERIM DIRECTOR



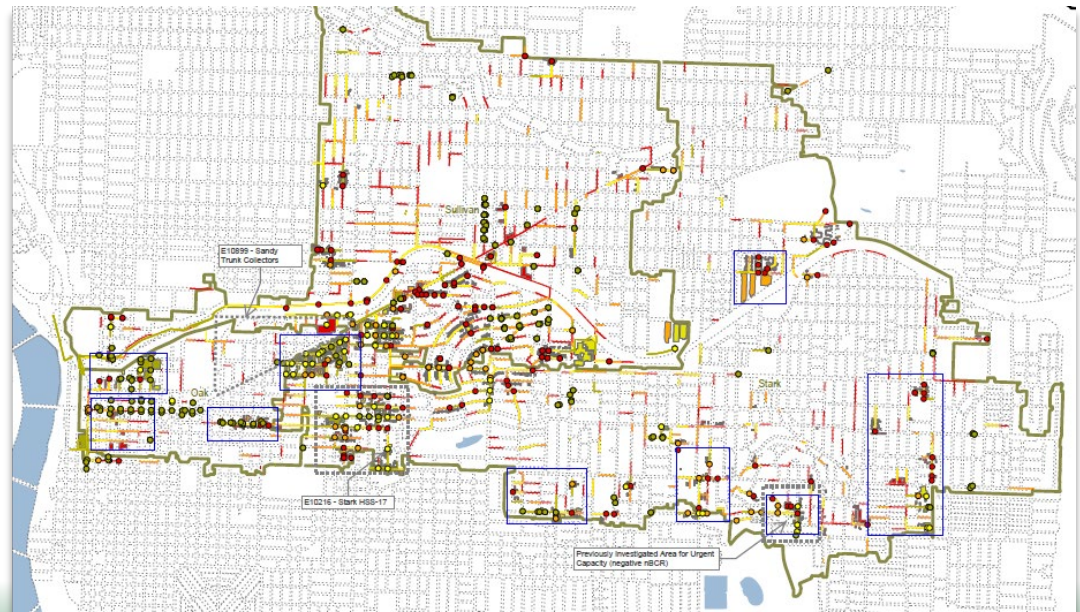
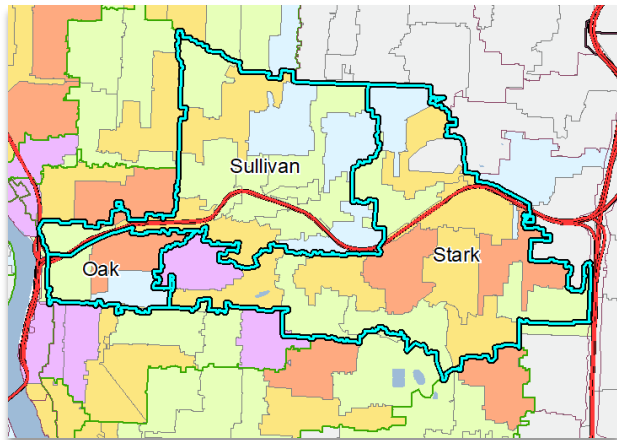
On-Call Temporary Modeling Staff to Deliver Work

- Supports collection system planning through to construction of capital projects
- Provides additional personnel during heavy and critical workload times for both CIP and non-CIP urgent modeling requests
- Supports City's sewer collection systems and treatment plants' maintenance and operations
- Supports risk assessments and development of long-term reinvestment needs for critical infrastructure
- Supports equity in contracting and workforce development recruitment and apprenticeships



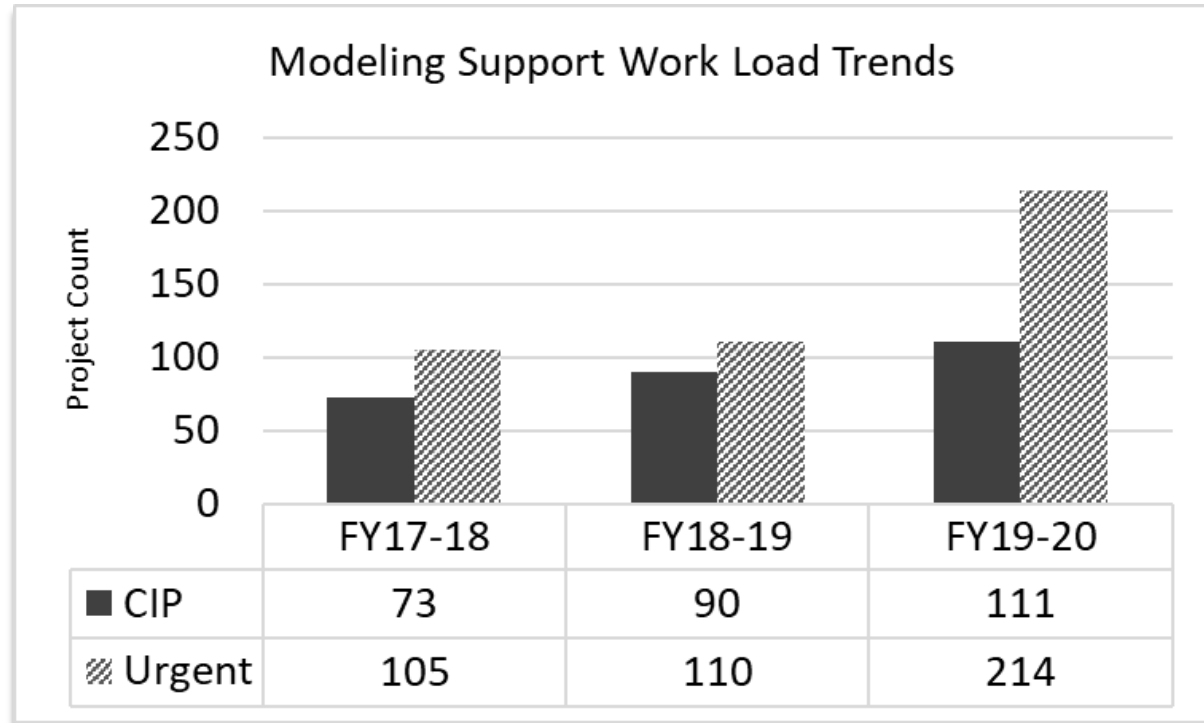
Contracts For On-Call Temporary Services

- Replace existing price agreements with up to 17 firms to continue needed temporary computer modeling and technical support
- \$15,050,000 over 5 years
- BUDGET: No Impact – currently adopted in CIP and Operating budgets
- Hydraulic & hydrologic modeling support for planning efforts, CIP projects, specialized modeling needs, computer model programming and technical editing support



Context: Increasing Demand for Modeling Services

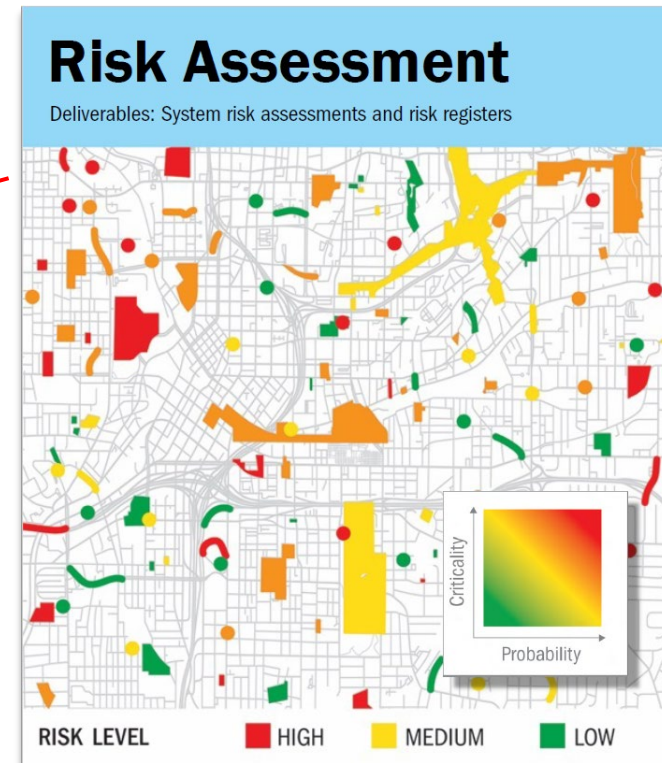
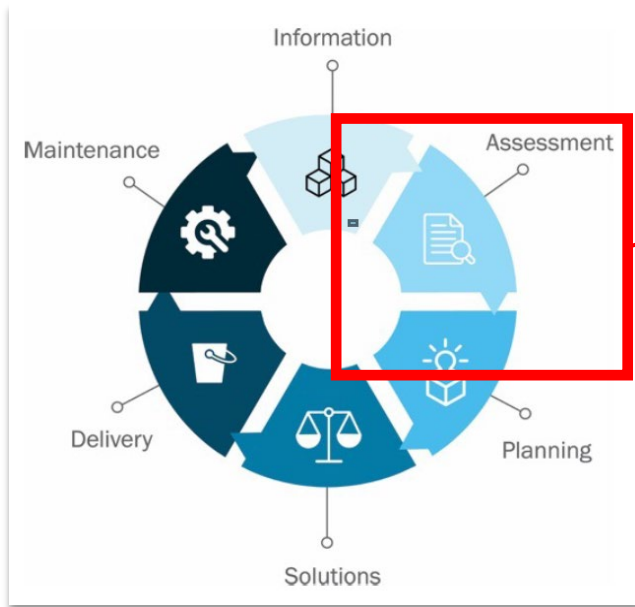
- Steady growth in CIP
- Urgent requests from various City sectors
- BES has 11 full time modeling FTEs (9 engineers, 2 tech support staff)



- These work load numbers do not include modeling support needs to inform long-range planning and investment



Context: Long-term Planning & Re-investment



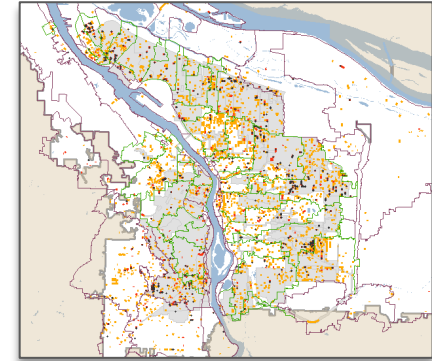
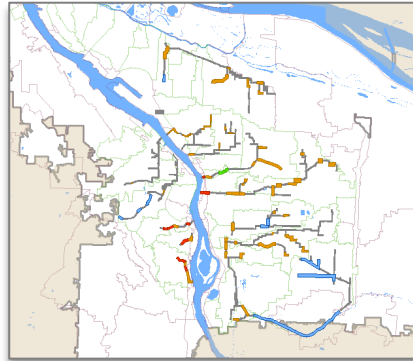
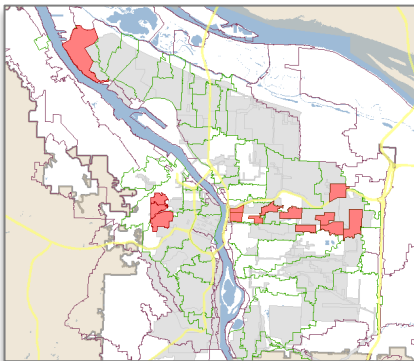
Computer modeling informs:

- What and where the risks are in our systems
- If there are inequities in the risks in our systems
- Which risks are acceptable and which are not
- Recommend improvement strategies



COBID-Certified/ D/M/W/ESB Opportunities

- Will work with Procurement to develop an outreach strategy to encourage COBID and D/M/W/ESB firms to apply
- RFP categories enable smaller, specialized and COBID-Certified/D/M/W/ESB firms to bid
- Expanded scope, number and variety of price agreements creates opportunities for a diversity of firms to contract with BES.



Final Comments

- Consistent with past/ongoing scope and utilization
- Support BES computer modeling workloads for long-term planning, CIP project delivery, regulatory compliance needs, and various modeling service requests
- Avoids cost of delays and supports a proactive re-investment culture
- Enhanced workforce development, diversity and recruitment effort and opportunities

