


DRAFT
subject to revision

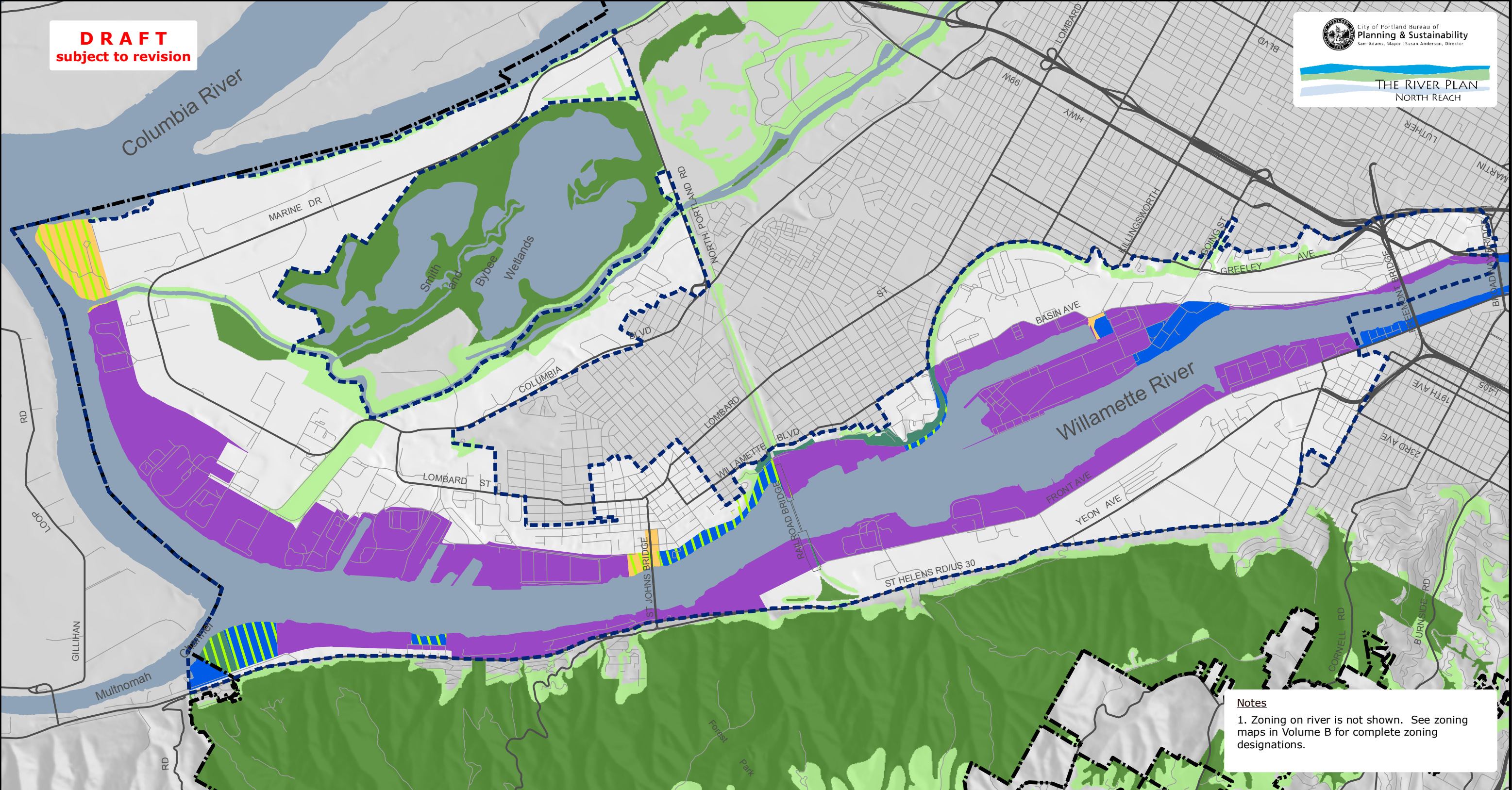


City of Portland Bureau of
Planning & Sustainability
Sam Adams, Mayor | Susan Anderson, Director




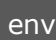







THE RIVER PLAN
NORTH REACH

Map #1: Existing Overlay Zones



Notes
1. Zoning on river is not shown. See zoning maps in Volume B for complete zoning designations.

legend

 north reach boundary	 environmental conservation (c)	 river industrial (i)	 river general (g)
 Portland city boundary	 environmental protection (p)	 river recreational (r)	 river natural (n)
	 river water quality (q)		

November 2009
City of Portland | Bureau of Planning and Sustainability | Geographic Information System

The information on the map was derived from digital data-bases on the City of Portland, Bureau of Planning and Sustainability GIS. Care was taken in the creation of this map but it is provided "as is". The City of Portland cannot accept any responsibility for error, omissions, or positional accuracy, and therefore, there are no warranties which accompany this product. However, notification of any errors will be appreciated.




River Plan / North Reach

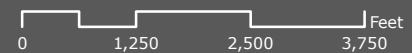
Map #2: Proposed Overlay Zones

Sheet #1 of 2

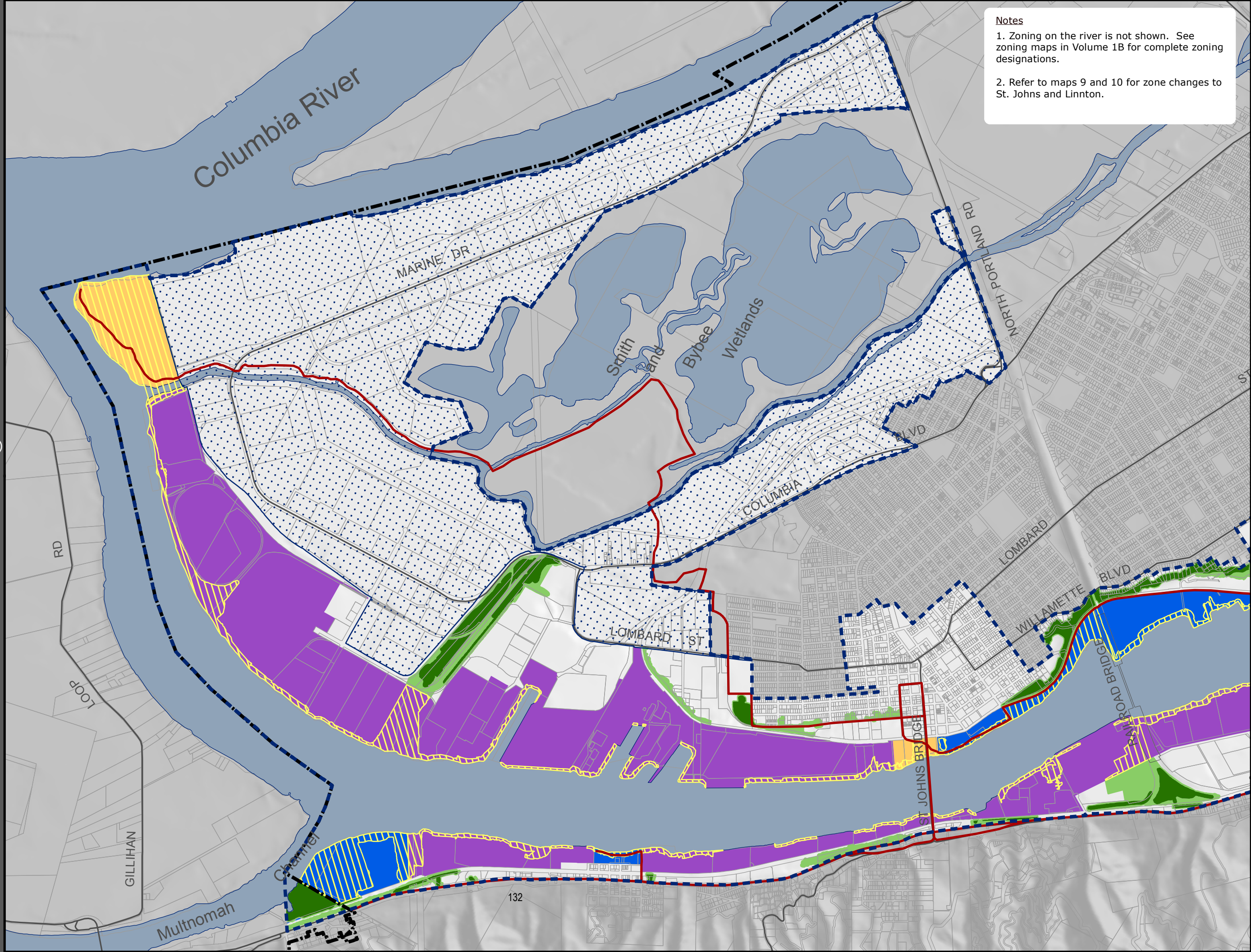
legend

- areas not evaluated for overlay zone changes
- north reach boundary
- trail alignment
- Portland city boundary
- river overlay zones
 - river environmental (e)
 - river industrial (i)
 - river recreational (r)
 - river general (g)
- environmental overlay zones
 - environmental conservation (c)
 - environmental protection (p)

February 2010
City of Portland | Bureau of Planning and Sustainability
Geographic Information System
The information on the map was derived from digital data-bases on the City of Portland, Bureau of Planning and Sustainability GIS. Care was taken in the creation of this map but it is provided "as is". The City of Portland cannot accept any responsibility for error, omissions, or positional accuracy, and therefore, there are no warranties which accompany this product. However, notification of any errors will be appreciated.



Notes
1. Zoning on the river is not shown. See zoning maps in Volume 1B for complete zoning designations.
2. Refer to maps 9 and 10 for zone changes to St. Johns and Linnton.



DRAFT
subject to revision

River Plan / North Reach

Map #2: Proposed Overlay Zones

Sheet #2 of 2

legend

- areas not evaluated for overlay zone changes
- north reach boundary
- trail alignment
- Portland city boundary
- river overlay zones
 - river environmental (e)
 - river industrial (i)
 - river recreational (r)
 - river general (g)
- environmental overlay zones
 - environmental conservation (c)
 - environmental protection (p)

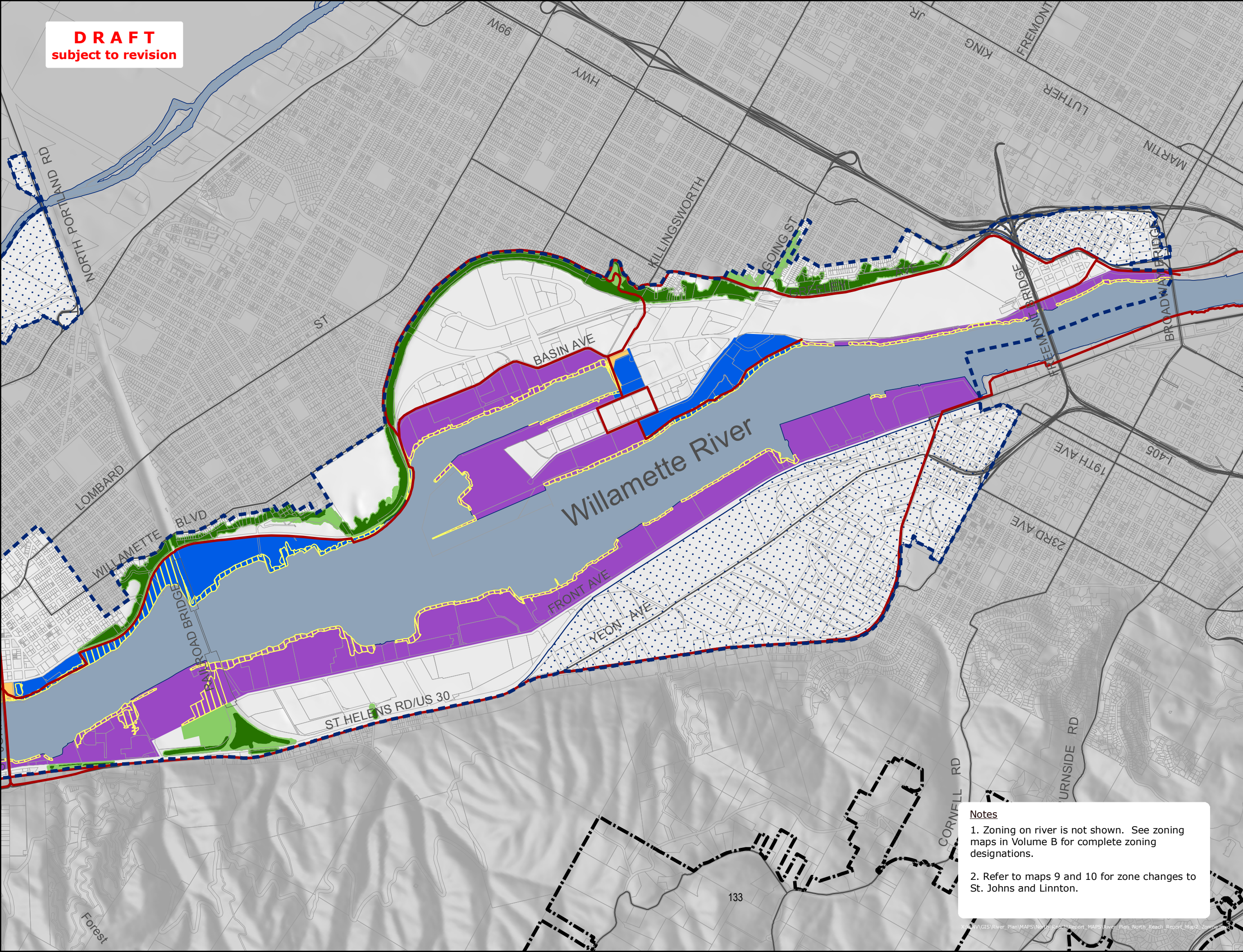
November 2009
 City of Portland | Bureau of Planning and Sustainability
 Geographic Information System

The information on the map was derived from digital data-bases on the City of Portland, Bureau of Planning and Sustainability GIS. Care was taken in the creation of this map but it is provided "as is". The City of Portland cannot accept any responsibility for error, omissions, or positional accuracy, and therefore, there are no warranties which accompany this product. However, notification of any errors will be appreciated.




Notes


1. Zoning on river is not shown. See zoning maps in Volume B for complete zoning designations.
2. Refer to maps 9 and 10 for zone changes to St. Johns and Linnton.



DRAFT
subject to revision

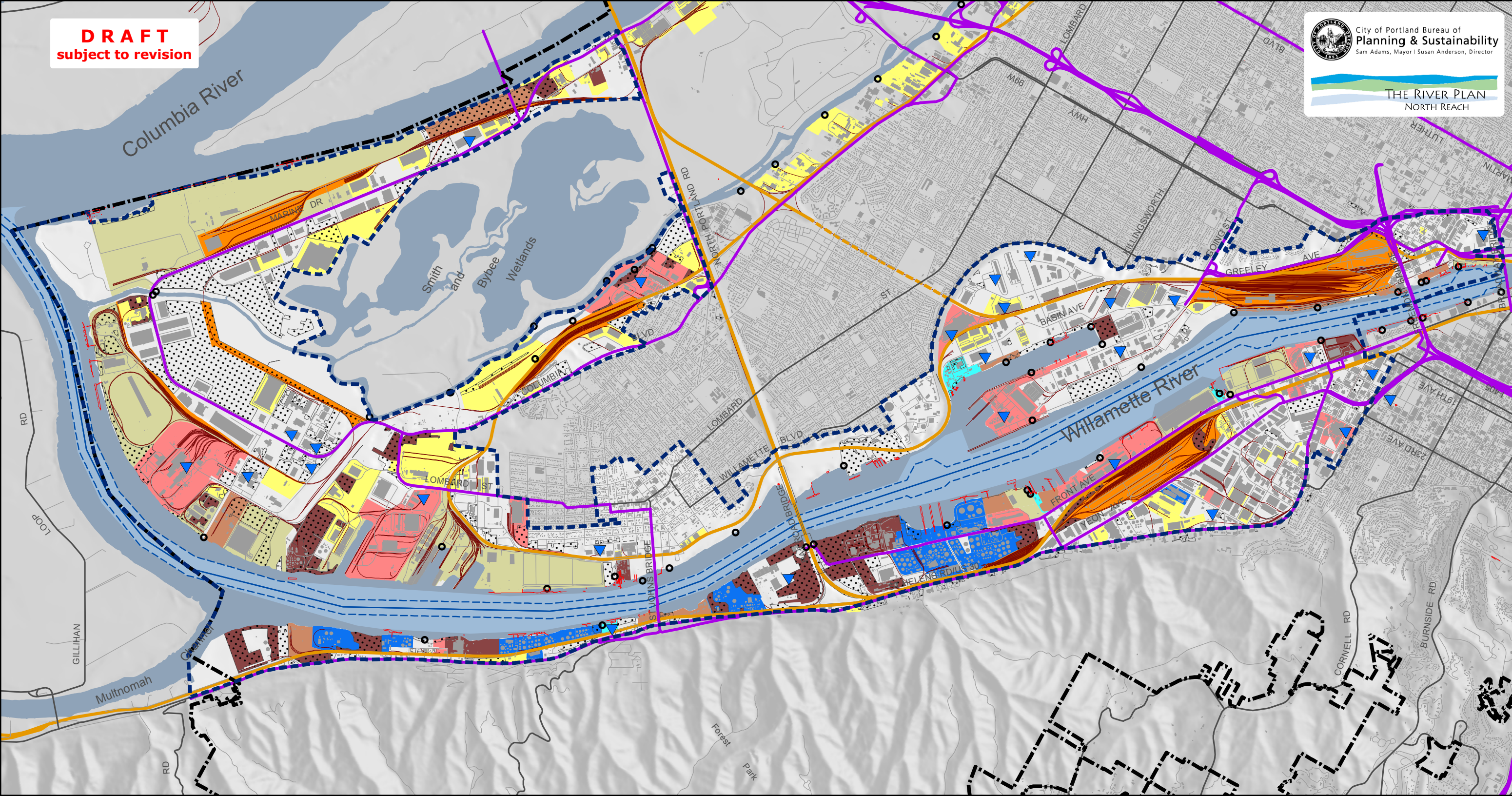


City of Portland Bureau of
Planning & Sustainability
Sam Adams, Mayor | Susan Anderson, Director



THE RIVER PLAN
NORTH REACH

Map #3: Portland Working Harbor Industries & Infrastructure



legend

- | | | | |
|---------------------------|---------------------------------------|---------------------------------------------|--------------------|
| north reach boundary | truck streets for heavy freight [TSP] | vacant land (2004) | energy |
| Portland city boundary | docks | potentially contaminated underutilized site | heavy construction |
| railroad main line | vessel "highway" & turning basins | facility type | vessel services |
| railroad main line tunnel | federal deep water navigation channel | marine terminals, international cargo | rail yard facility |
| all other rail lines | major employers (250 or more) | metals & equipment manufacturing | other rail users |
| building footprint | outfalls | | |

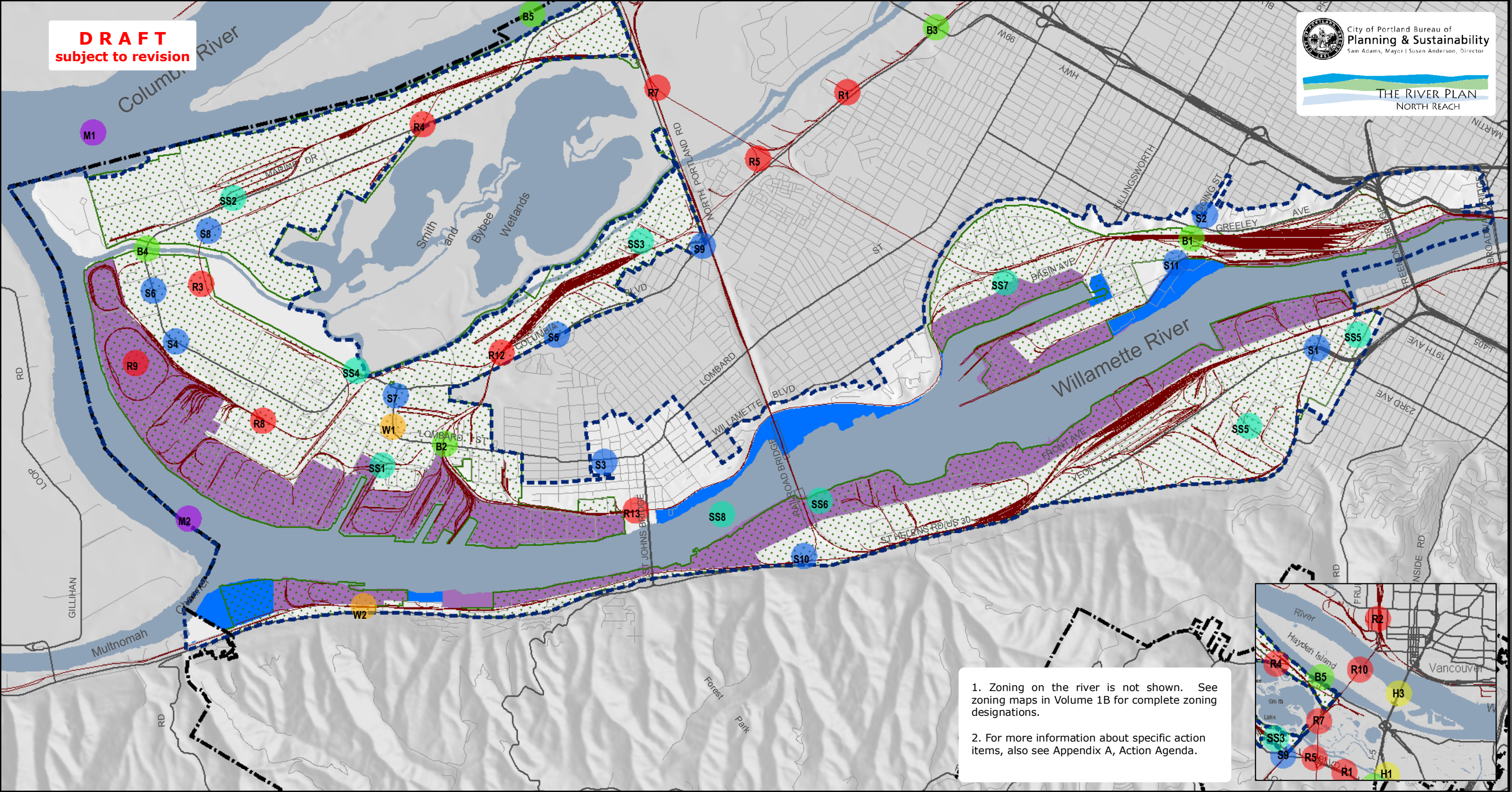
November 2009

City of Portland | Bureau of Planning and Sustainability | Geographic Information System

The information on the map was derived from digital data-bases on the City of Portland, Bureau of Planning and Sustainability GIS. Care was taken in the creation of this map but it is provided "as is". The City of Portland cannot accept any responsibility for error, omissions, or positional accuracy, and therefore, there are no warranties which accompany this product. However, notification of any errors will be appreciated.

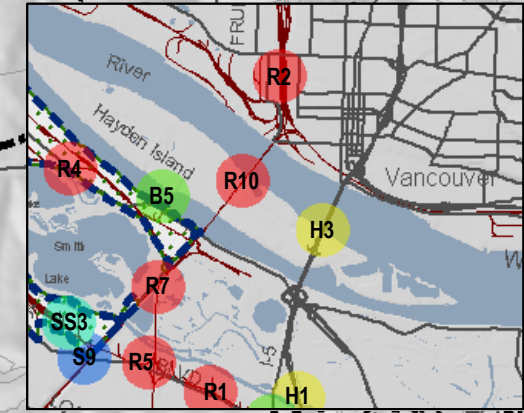


DRAFT
subject to revision



1. Zoning on the river is not shown. See zoning maps in Volume 1B for complete zoning designations.

2. For more information about specific action items, also see Appendix A, Action Agenda.



- legend**
- north reach boundary
 - Portland city boundary
 - rail lines
 - river industrial overlay zone (i)
 - river general overlay zone (g)

- prime industrial land


- economic prosperity action items**
- | | | | | | |
|---|---------|---|----------------|----|----------------|
| H | highway | M | marine | SS | sanitary sewer |
| S | street | R | rail | | |
| B | bridge | W | drinking water | | |

November 2009
City of Portland | Bureau of Planning and Sustainability | Geographic Information System


The information on the map was derived from digital data-bases on the City of Portland, Bureau of Planning and Sustainability GIS. Care was taken in the creation of this map but it is provided "as is". The City of Portland cannot accept any responsibility for error, omissions, or positional accuracy, and therefore, there are no warranties which accompany this product. However, notification of any errors will be appreciated.

137

DRAFT
subject to revision

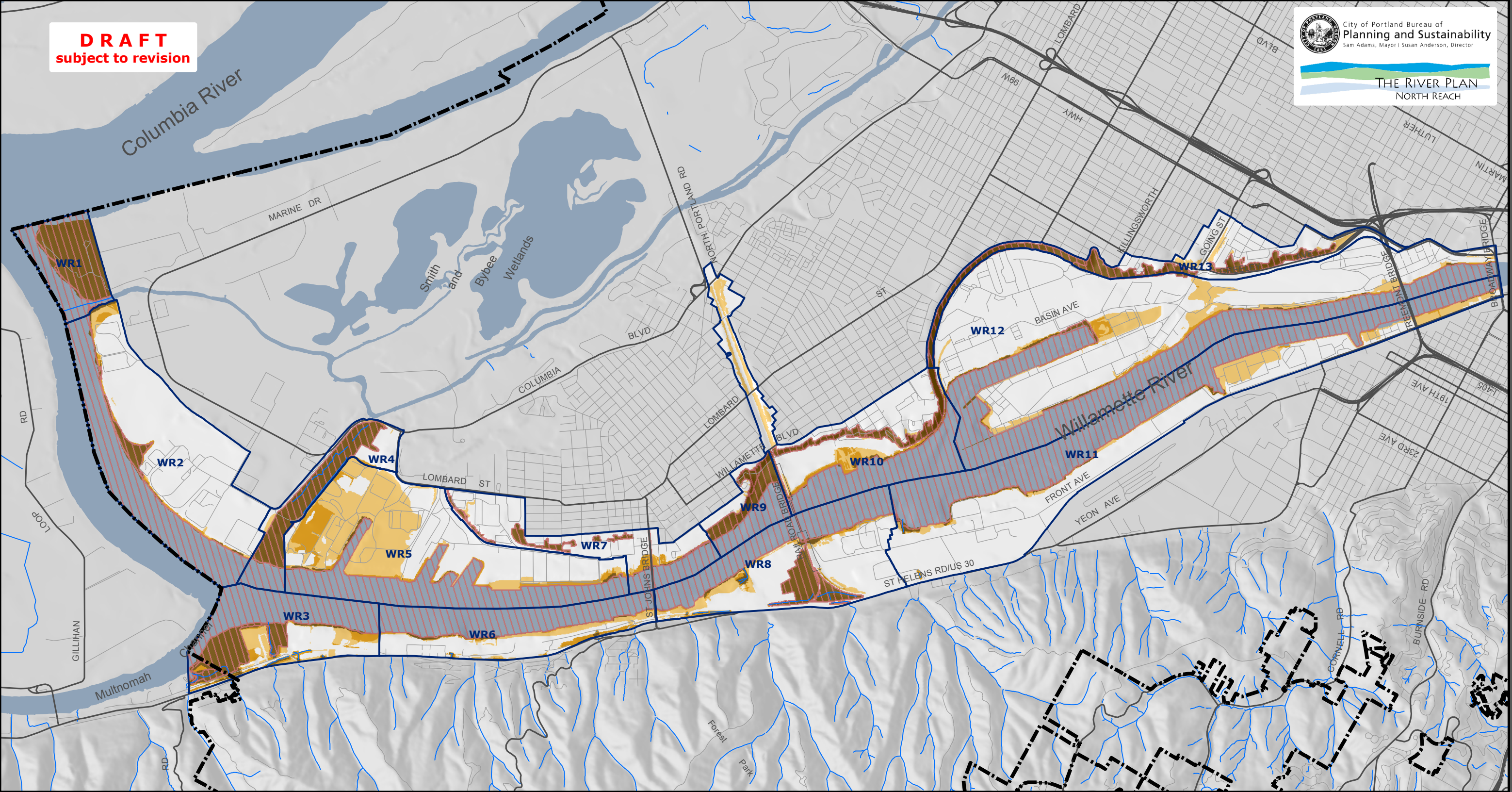


City of Portland Bureau of
Planning and Sustainability
Sam Adams, Mayor | Susan Anderson, Director










THE RIVER PLAN
NORTH REACH

**Map #5: Natural Resource Inventory - Riparian/
Wildlife Habitat Combined Ranks**



legend

- Combined Relative Resource Value
 -  high value resources
 -  medium value resources
 -  low value resources
-  special habitat areas (SHAs)
-  surface stream
-  Willamette River (WR) north reach inventory sites
-  Portland city boundary

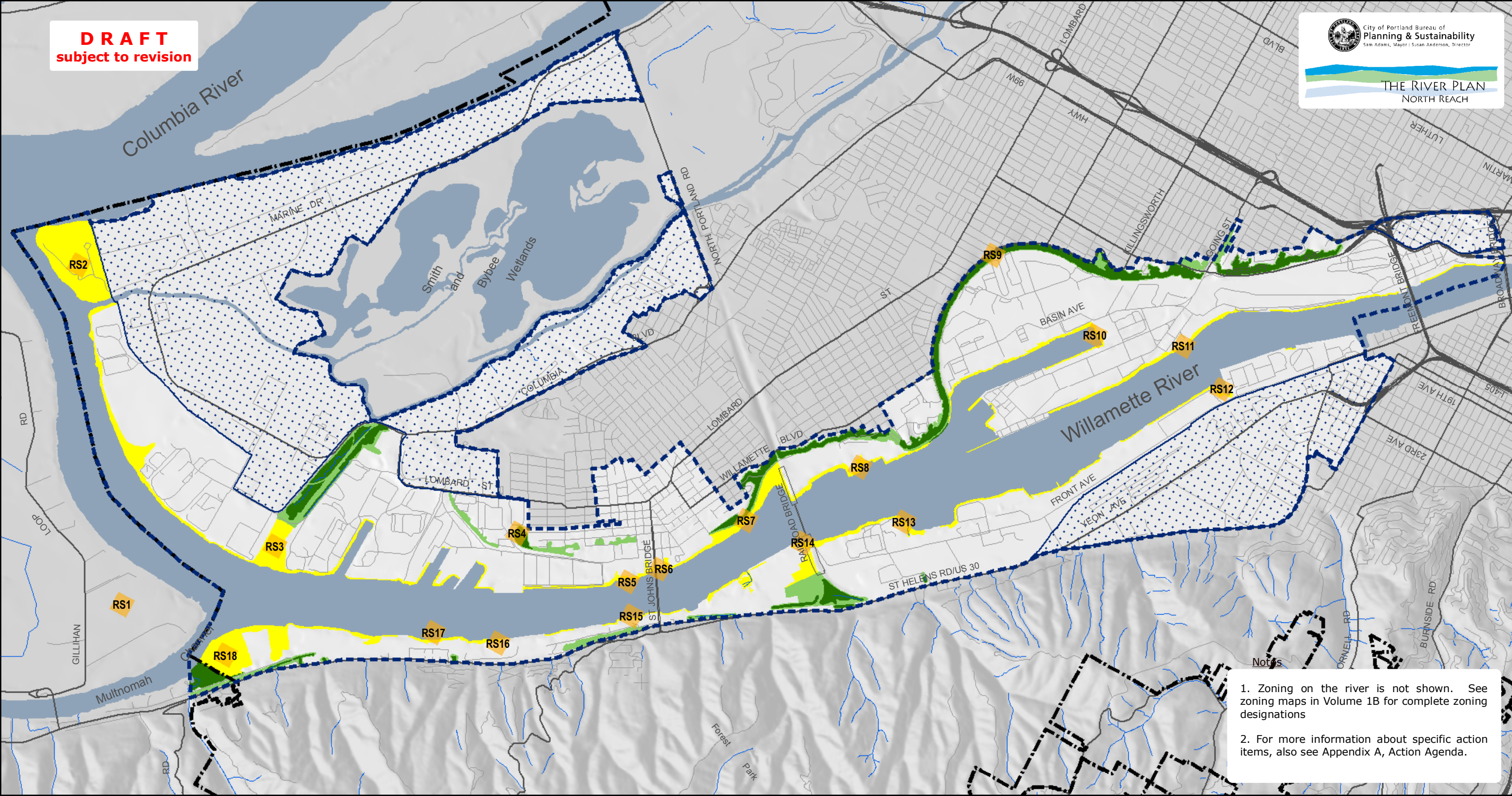
November 2009

City of Portland | Bureau of Planning and Sustainability | Geographic Information System

The information on the map was derived from digital data-bases on the City of Portland, Bureau of Planning and Sustainability GIS. Care was taken in the creation of this map but it is provided "as is". The City of Portland cannot accept any responsibility for error, omissions, or positional accuracy, and therefore, there are no warranties which accompany this product. However, notification of any errors will be appreciated.



DRAFT
subject to revision



Notes

1. Zoning on the river is not shown. See zoning maps in Volume 1B for complete zoning designations
2. For more information about specific action items, also see Appendix A, Action Agenda.

legend

- river environmental overlay zone (e)
- environmental conservation overlay zone (c)
- environmental protection overlay zone (p)
- areas not evaluated for overlay zone changes
- RS watershed health action items (potential restoration sites)
- surface stream
- north reach boundary
- Portland city boundary


November 2009

City of Portland | Bureau of Planning and Sustainability | Geographic Information System


The information on the map was derived from digital data-bases on the City of Portland, Bureau of Planning and Sustainability GIS. Care was taken in the creation of this map but it is provided "as is". The City of Portland cannot accept any responsibility for error, omissions, or positional accuracy, and therefore, there are no warranties which accompany this product. However, notification of any errors will be appreciated.



DRAFT
subject to revision

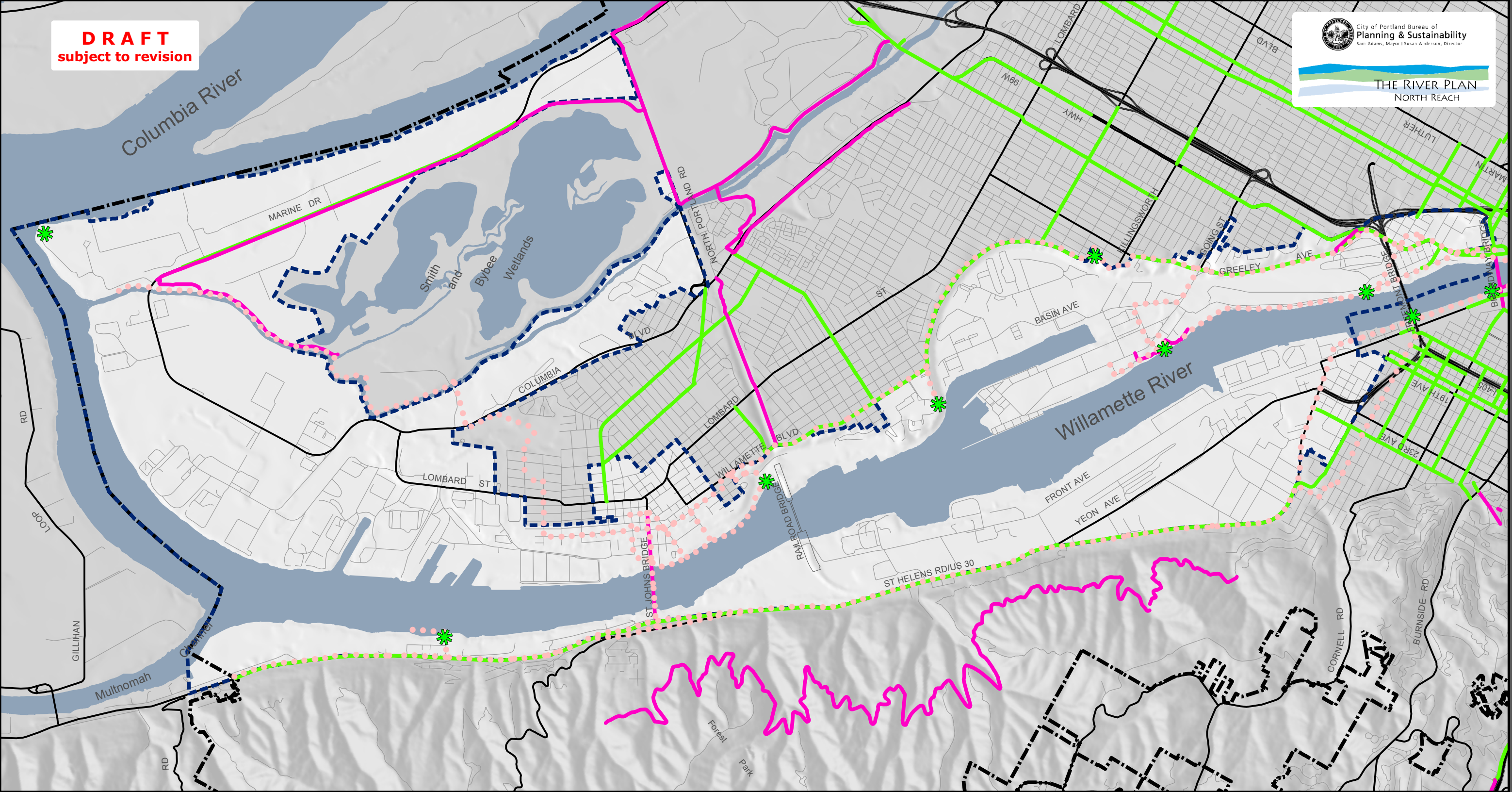


City of Portland Bureau of
Planning & Sustainability
Sam Adams, Mayor | Susan Anderson, Director





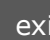




THE RIVER PLAN
NORTH REACH

Map #7: Existing Greenway Trail and Bicycle Network



legend

-  north reach boundary
-  Portland city boundary
-  existing greenway viewpoint
-  existing greenway trail designation
-  existing bicycle facility
-  existing on-street bicycle facility
-  existing multi-use path

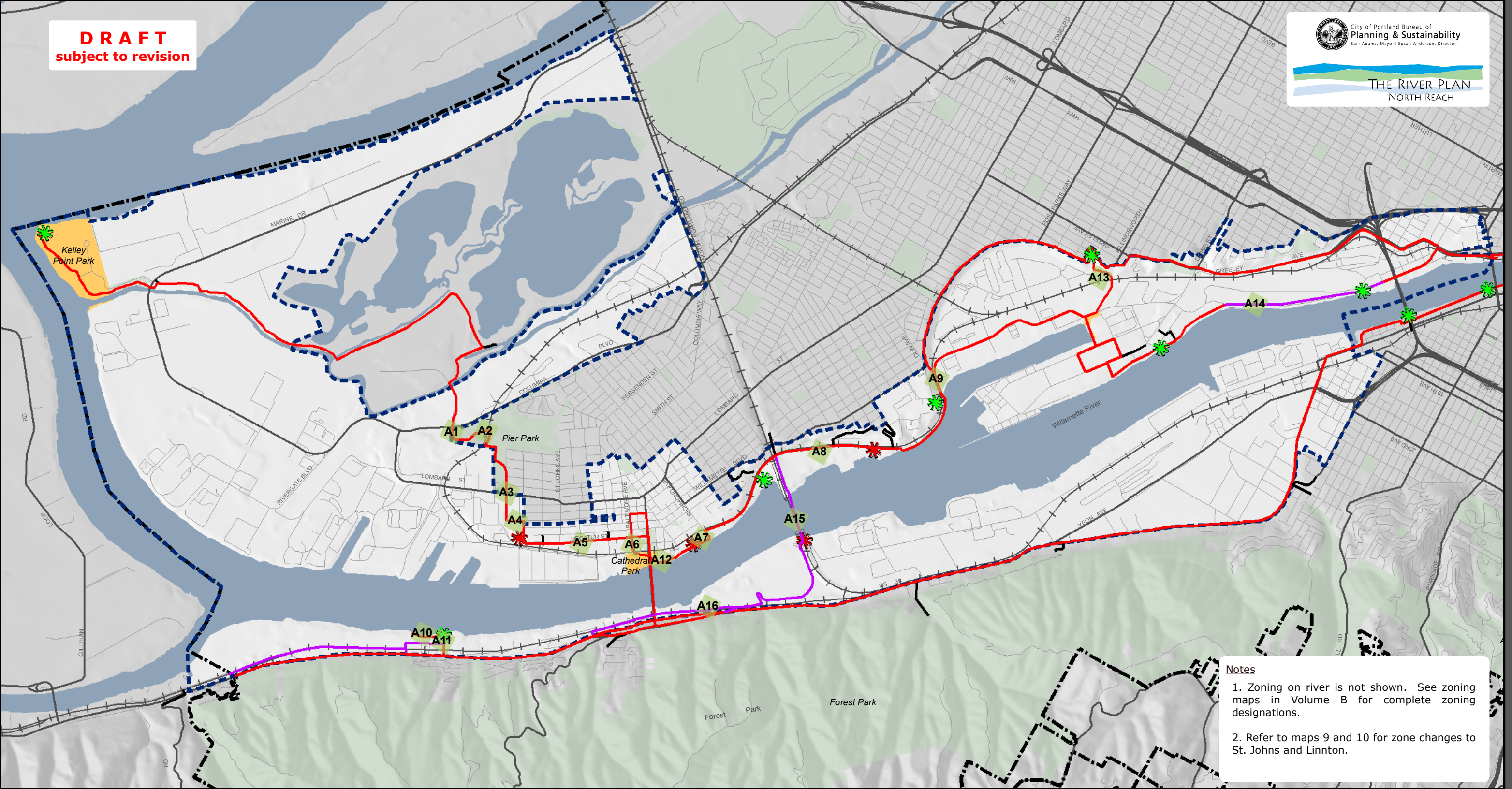
November 2009

City of Portland | Bureau of Planning and Sustainability | Geographic Information System

The information on the map was derived from digital data-bases on the City of Portland, Bureau of Planning and Sustainability GIS. Care was taken in the creation of this map but it is provided "as is". The City of Portland cannot accept any responsibility for error, omissions, or positional accuracy, and therefore, there are no warranties which accompany this product. However, notification of any errors will be appreciated.



DRAFT
subject to revision



Notes

1. Zoning on river is not shown. See zoning maps in Volume B for complete zoning designations.
2. Refer to maps 9 and 10 for zone changes to St. Johns and Linnton.

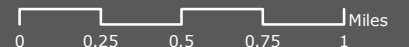
legend

- north reach boundary
- Portland city boundary
- recommended greenway viewpoints
- existing greenway viewpoints to remain
- river recreational overlay zone (r)
- trail access locations
- access action items
- greenway trail alignment**
- recommended greenway trail
- potential greenway trail (needs further feasibility study)

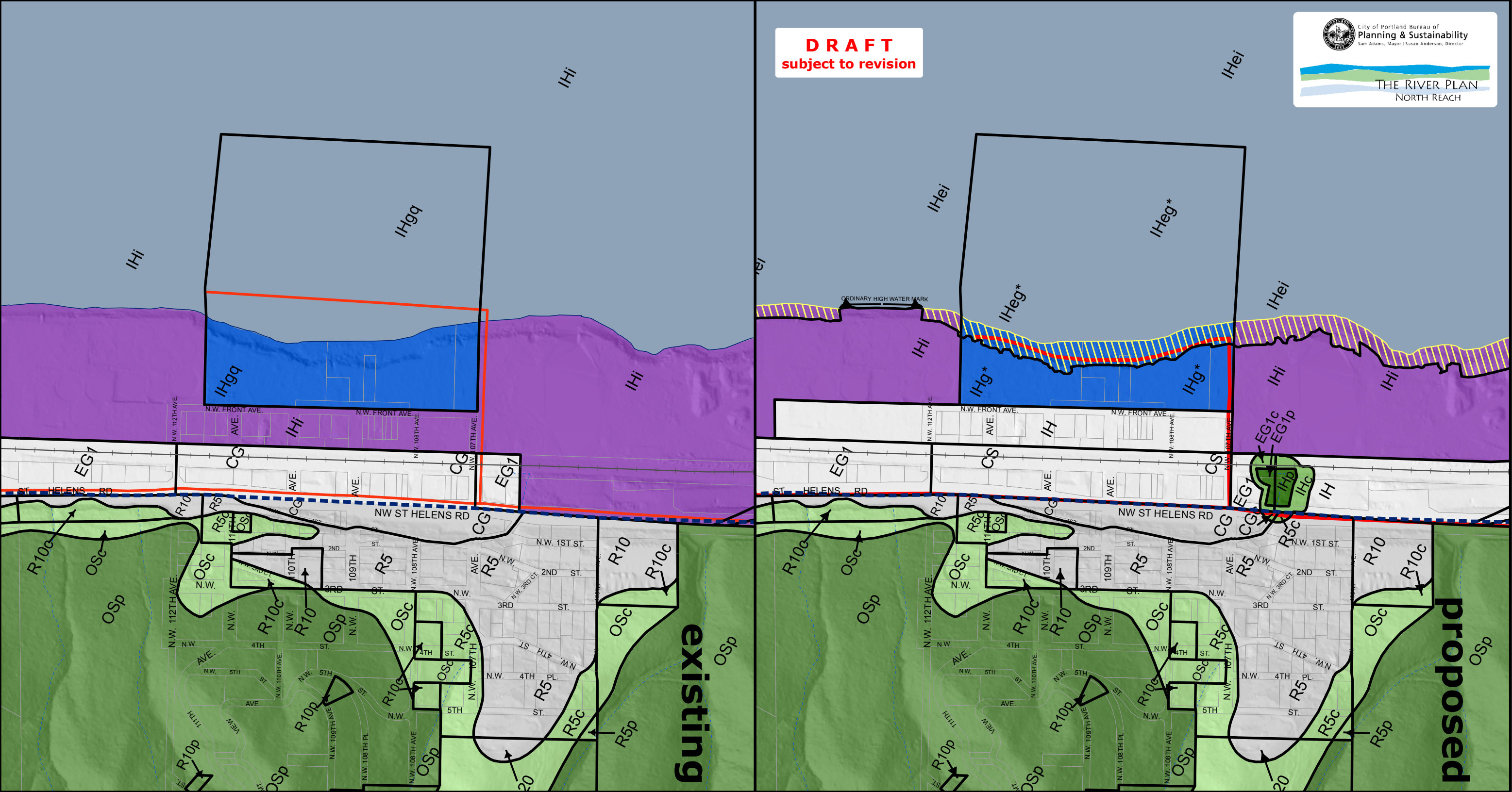
February 2010

City of Portland | Bureau of Planning and Sustainability | Geographic Information System

The information on the map was derived from digital data-bases on the City of Portland, Bureau of Planning and Sustainability GIS. Care was taken in the creation of this map but it is provided "as is". The City of Portland cannot accept any responsibility for error, omissions, or positional accuracy, and therefore, there are no warranties which accompany this product. However, notification of any errors will be appreciated.



DRAFT
subject to revision



legend

- greenway/river overlay zones
- river environmental (e)
- river industrial (i)
- river recreational (r)
- river general (g)
- environmental conservation (c)
- environmental protection (p)
- zoning boundaries
- IHeg* zoning designations
- surface stream
- greenway trail
- north reach boundary

February 2010

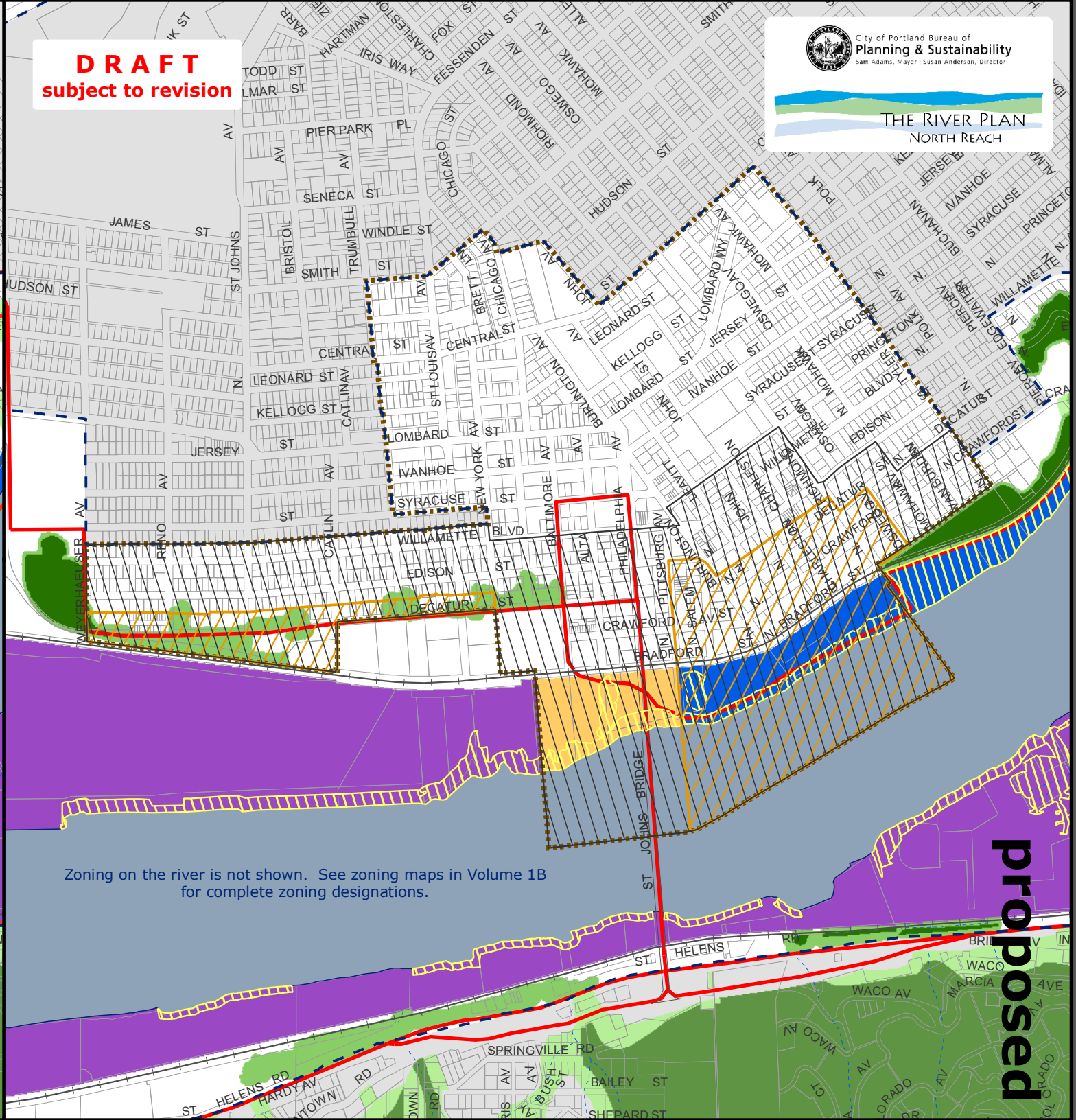
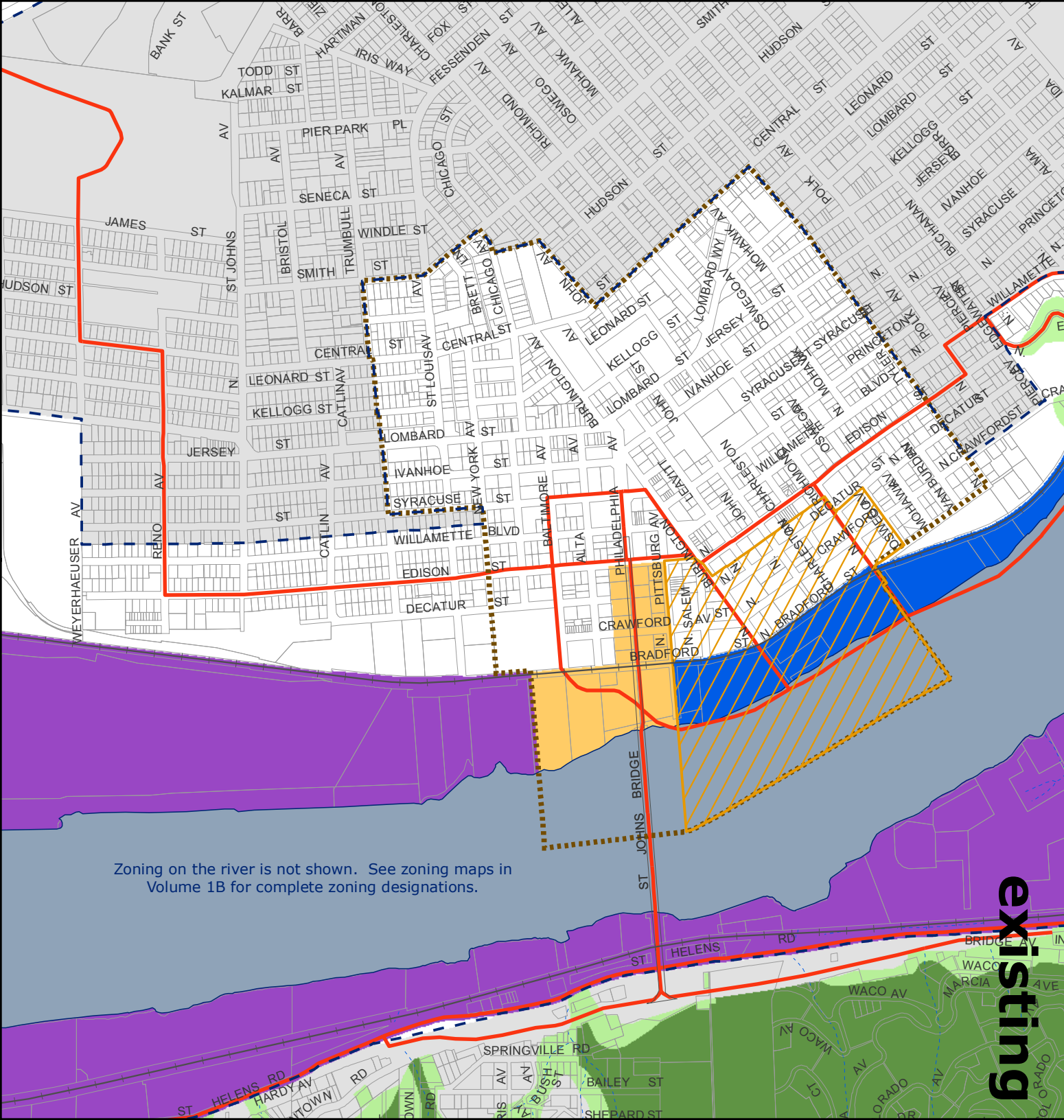
City of Portland | Bureau of Planning and Sustainability | Geographic Information System

The information on the map was derived from digital data-bases on the City of Portland, Bureau of Planning and Sustainability GIS. Care was taken in the creation of this map but it is provided "as is". The City of Portland cannot accept any responsibility for error, omissions, or positional accuracy, and therefore, there are no warranties which accompany this product. However, notification of any errors will be appreciated.



DRAFT
 subject to revision

Map #10: St. Johns Existing and Proposed Zoning



Zoning on the river is not shown. See zoning maps in Volume 1B for complete zoning designations.

Zoning on the river is not shown. See zoning maps in Volume 1B for complete zoning designations.

legend

- greenway/river overlay zones
- river environmental (e)
- river industrial (i)
- river recreational (r)
- river general (g)
- environmental overlay zones
- environmental conservation (c)
- environmental protection (p)
- surface stream
- north reach boundary
- plan district boundary
- subdistricts
- industrial noise impact area (proposed)
- greenway trail

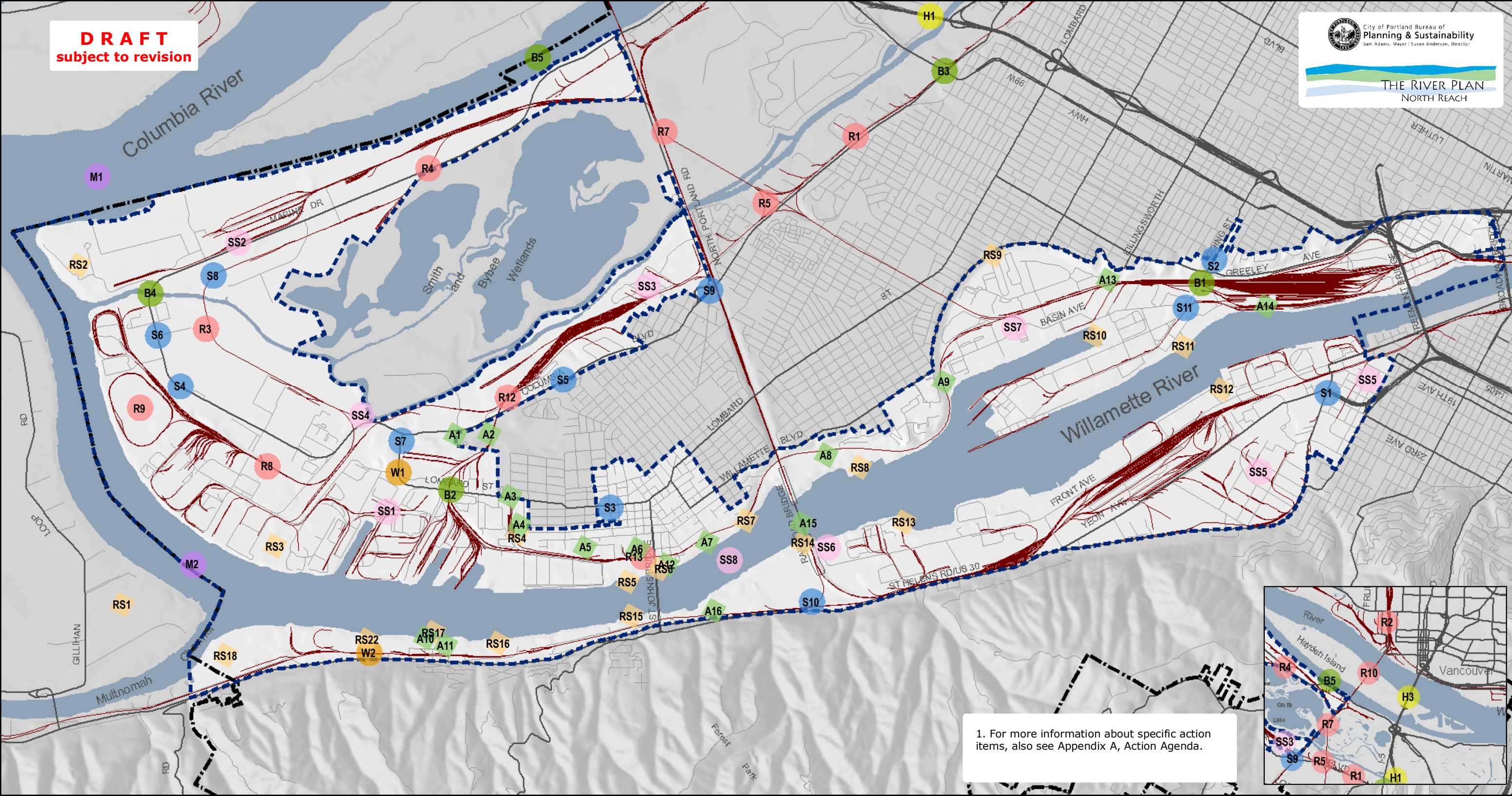
November 2009

City of Portland | Bureau of Planning and Sustainability | Geographic Information System

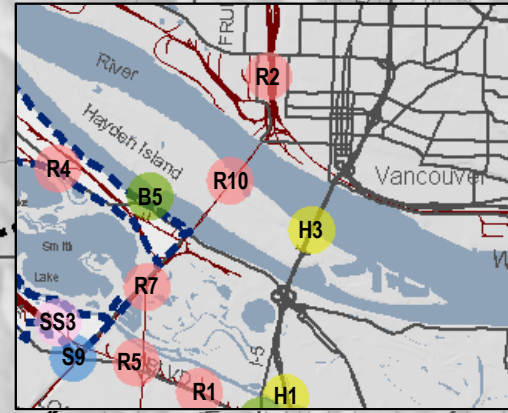
The information on the map was derived from digital data-bases on the City of Portland, Bureau of Planning and Sustainability GIS. Care was taken in the creation of this map but it is provided "as is". The City of Portland cannot accept any responsibility for error, omissions, or positional accuracy, and therefore, there are no warranties which accompany this product. However, notification of any errors will be appreciated.



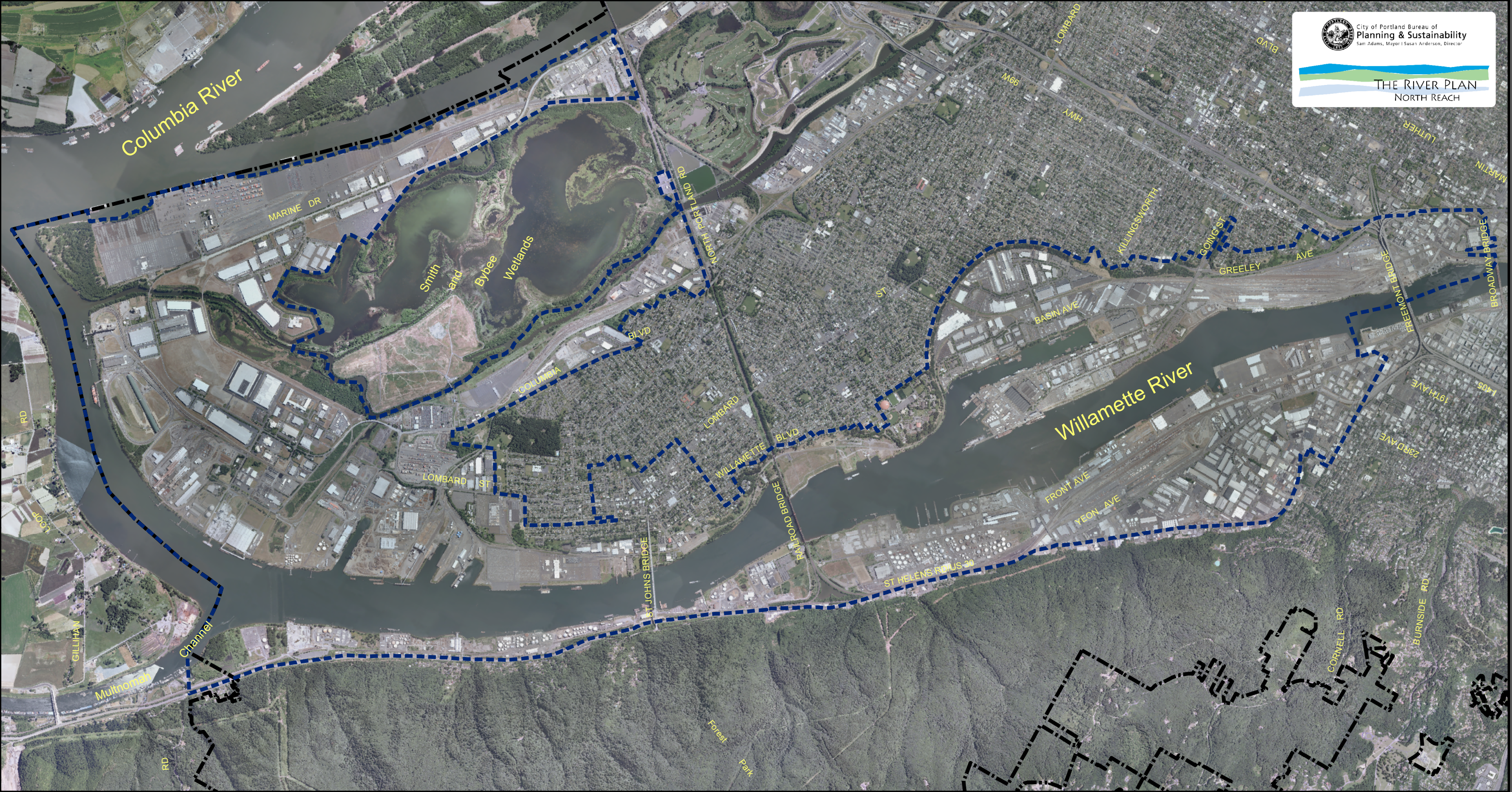
DRAFT
subject to revision





1. For more information about specific action items, also see Appendix A, Action Agenda.





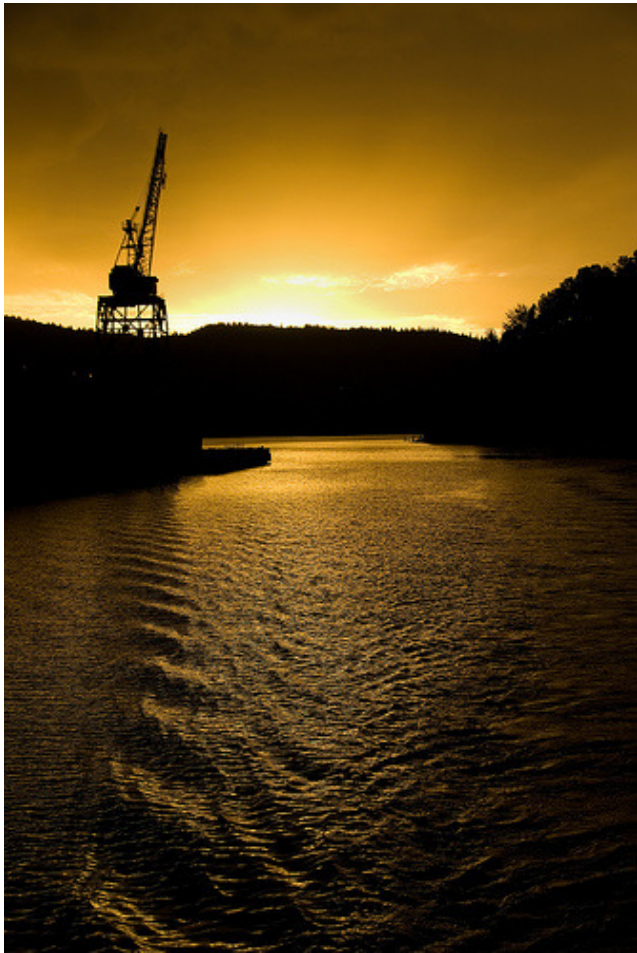
legend		action items			
north reach boundary	RS restoration sites	H highway	M marine	SS sanitary sewer	
Portland city boundary	A access	S street	R rail	RC riverfront communities	
rail lines	B bridge	W drinking water			



legend
 north reach boundary
 Portland city boundary

November 2009
City of Portland | Bureau of Planning and Sustainability | Geographic Information System
 The information on the map was derived from digital data-bases on the City of Portland, Bureau of Planning and Sustainability GIS. Care was taken in the creation of this map but it is provided "as is". The City of Portland cannot accept any responsibility for error, omissions, or positional accuracy, and therefore, there are no warranties which accompany this product. However, notification of any errors will be appreciated.





RIVER PLAN / NORTH REACH RECOMMENDED DRAFT

VOLUME 1A: POLICIES, OBJECTIVES, AND RECOMMENDATIONS (available in print)

VOLUME 1B: CODE AMENDMENTS AND ZONING MAPS (available in print)

VOLUME 2: ECONOMIC PROSPERITY BACKGROUND INFORMATION

VOLUME 3A: NATURAL RESOURCES INVENTORY: RIPARIAN CORRIDORS AND WILDLIFE HABITAT

VOLUME 3B: NATURAL RESOURCES INVENTORY: RIPARIAN CORRIDORS AND WILDLIFE HABITAT – APPENDICES

VOLUME 3C: ECONOMIC, SOCIAL, ENVIRONMENTAL AND ENERGY ANALYSIS AND RECOMMENDATIONS FOR RIPARIAN CORRIDORS AND WILDLIFE HABITAT

VOLUME 4: ACCESS BACKGROUND INFORMATION

VOLUME 5: ORDINANCE AND RESOLUTION (available in print)

Volumes 2, 3 and 4 are available on CD.