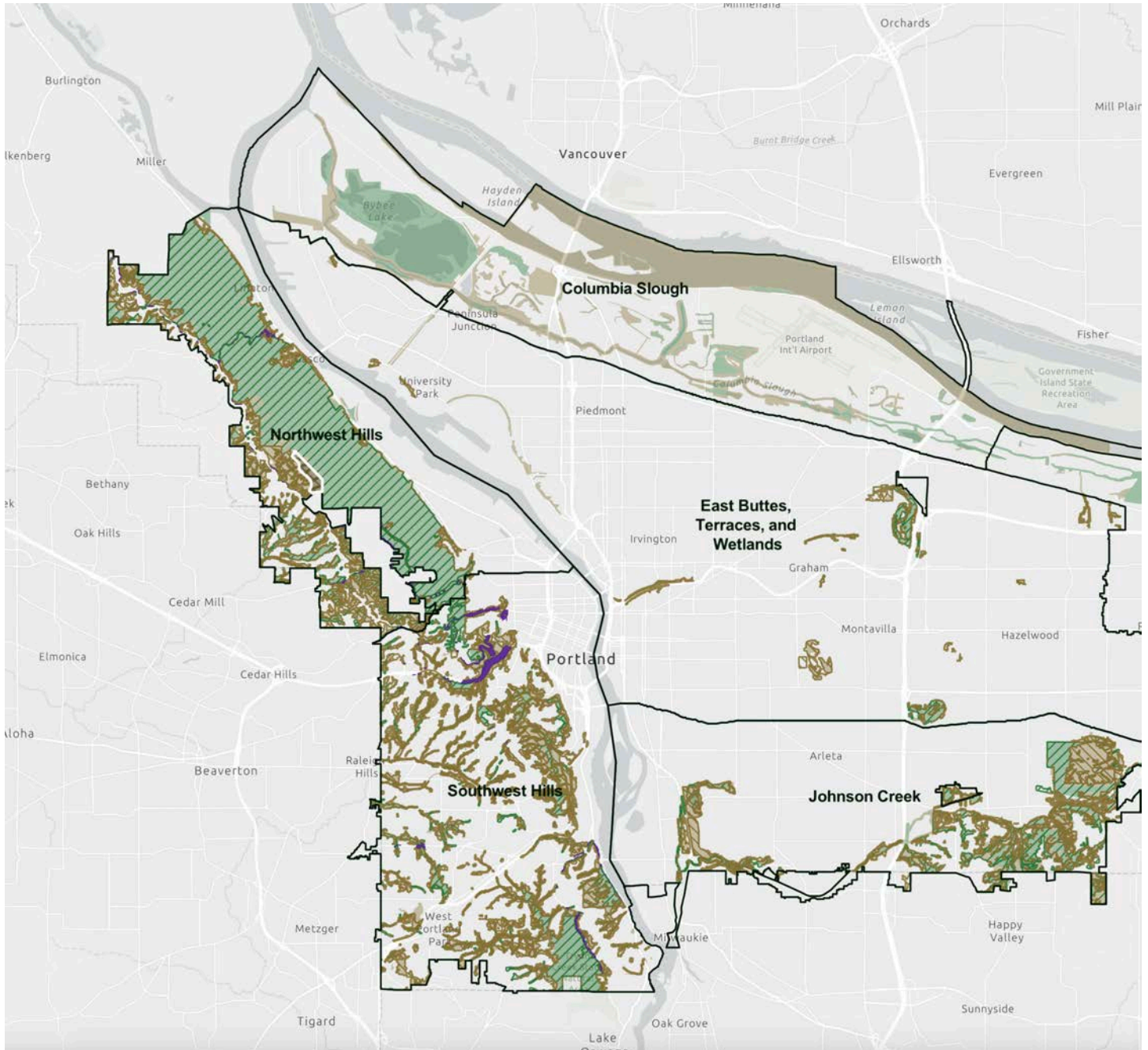


**PORTLAND
SOUTHWEST HILLS
NORTHWEST HILLS
SOUTHEAST**

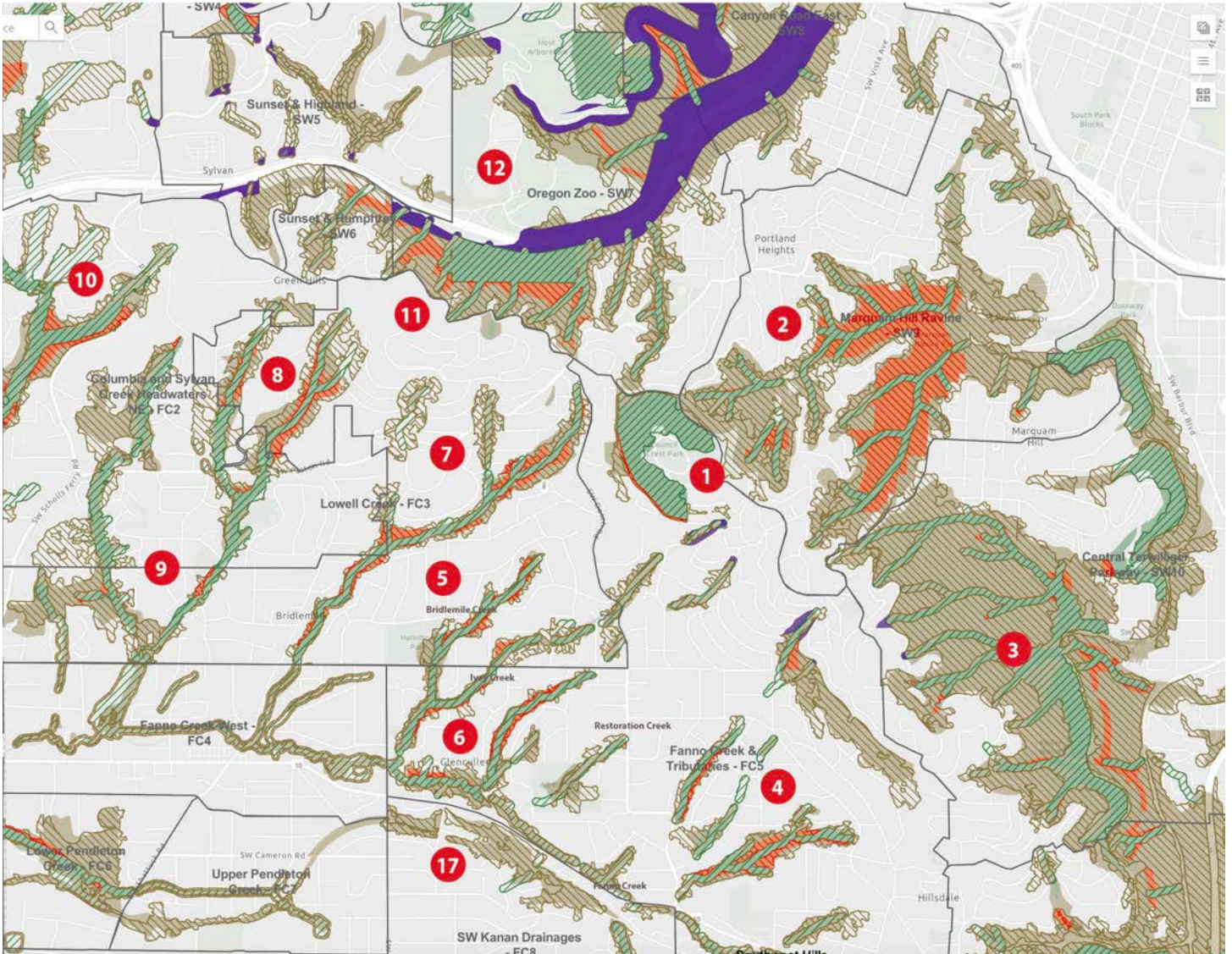
**Environmental Zone Mapping Correction Project
Overview of Affected Areas**



Green solid = current Protection "P" zone
 Brown solid = current Conservation "C" zone
 Green stripes = proposed Protection "P" zone
 Brown stripes = proposed Conservation "C" zone
 Green solid intersecting with Brown stripes (or red shown here) =
 "P" zones changing to "C" zones
 Green solid with no intersecting green stripes = "P" zone
 changing to no zone protection

Enter property address
 Click on upper right icon with three horizontal lines
 Turn on "Existing Environmental Overlay" to see both current and proposed ezones

PORTLAND SOUTHWEST HILLS (overall map)



Protection zone "P" is the highest zone for protection
 Conservation zone "C" opens up for possible construction

Green solid = current Protection "P" zone
 Brown solid = current Conservation "C" zone
 Green stripes = proposed Protection "P" zone
 Brown stripes = proposed Conservation "C" zone
 Green solid intersecting with Brown stripes (or red shown here) =
 "P" zones changing to "C" zones
 Green solid with no intersecting green stripes = "P" zone
 changing to no zone protection

To view interactive maps here:

<https://www.portland.gov/bps/ezones/ezones-map-app>

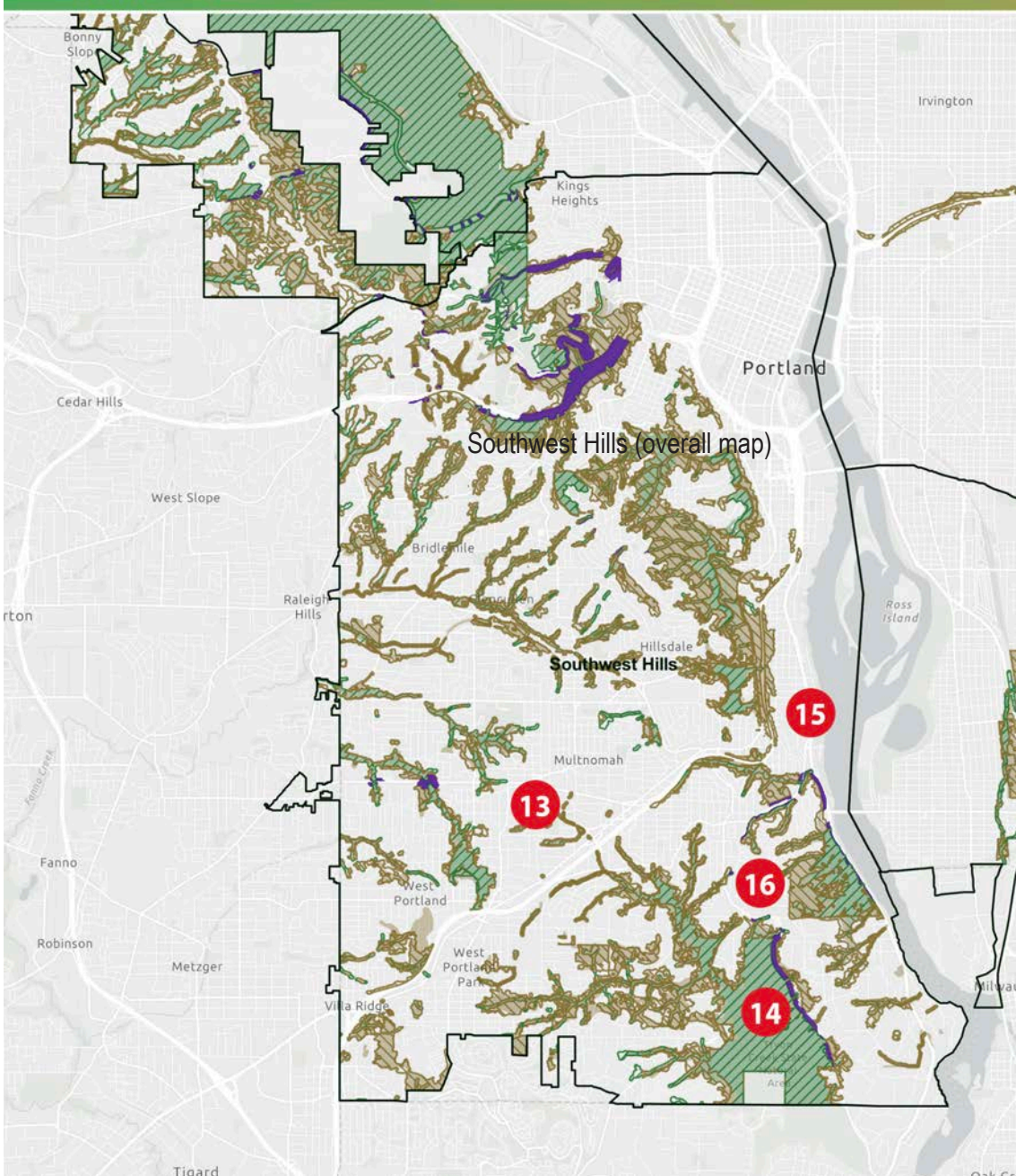
Click on "View the interactive map"

Enter property address

Click on upper right icon with three horizontal lines

Turn on "Existing Environmental Overlay" to see both current and proposed ezones

**PORTLAND
SOUTHWEST HILLS (overall map)**



Green solid = current Protection "P" zone
 Brown solid = current Conservation "C" zone
 Green stripes = proposed Protection "P" zone
 Brown stripes = proposed Conservation "C" zone
 Green solid intersecting with Brown stripes (or red shown here) =
 "P" zones changing to "C" zones
 Green solid with no intersecting green stripes = "P" zone
 changing to no zone protection

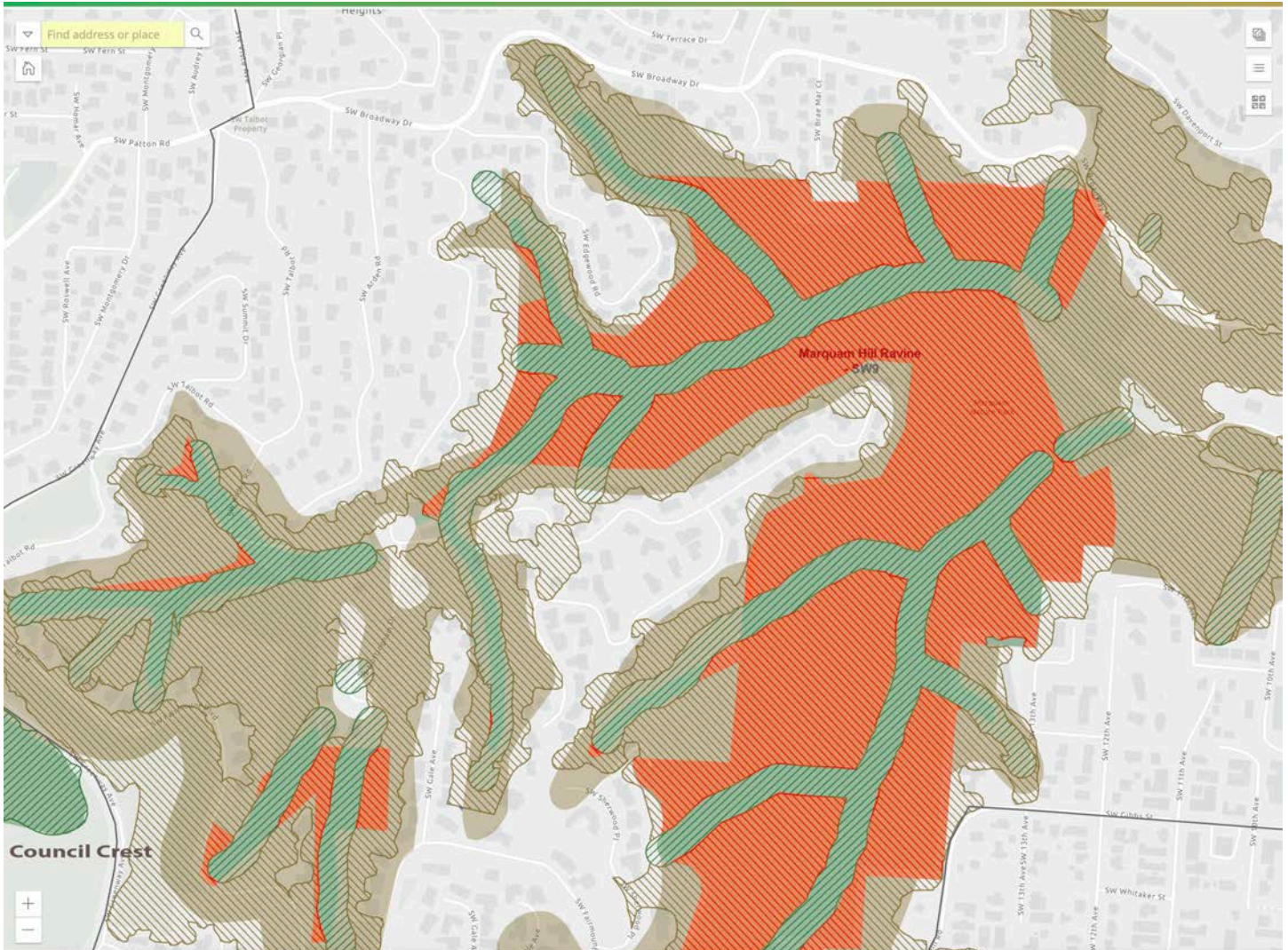
Click on "View the interactive map"
 Enter property address
 Click on upper right icon with three horizontal lines
 Turn on "Existing Environmental Overlay" to see both current and proposed ezones

2

**PORTLAND
SOUTHWEST HILLS:**
Marquam Hill Ravine SW9

Areas:
Marquam Hill
Portland Heights

Marquam Nature Park (significant)
Next to Council Crest (top of Fanno
Creek Watershed)



Protection zone "P" is the highest zone for protection
Conservation zone "C" opens up for possible construction

Green solid = current Protection "P" zone
 Brown solid = current Conservation "C" zone
 Green stripes = proposed Protection "P" zone
 Brown stripes = proposed Conservation "C" zone
 Green solid intersecting with Brown stripes (or red shown here) =
 "P" zones changing to "C" zones
 Green solid with no intersecting green stripes = "P" zone
 changing to no zone protection

To view interactive maps here:

<https://www.portland.gov/bps/ezones/ezones-map-app>

Click on "View the interactive map"

Enter property address

Click on upper right icon with three horizontal lines

Turn on "Existing Environmental Overlay" to see both current and proposed ezones

3

PORTLAND

SOUTHWEST HILLS:

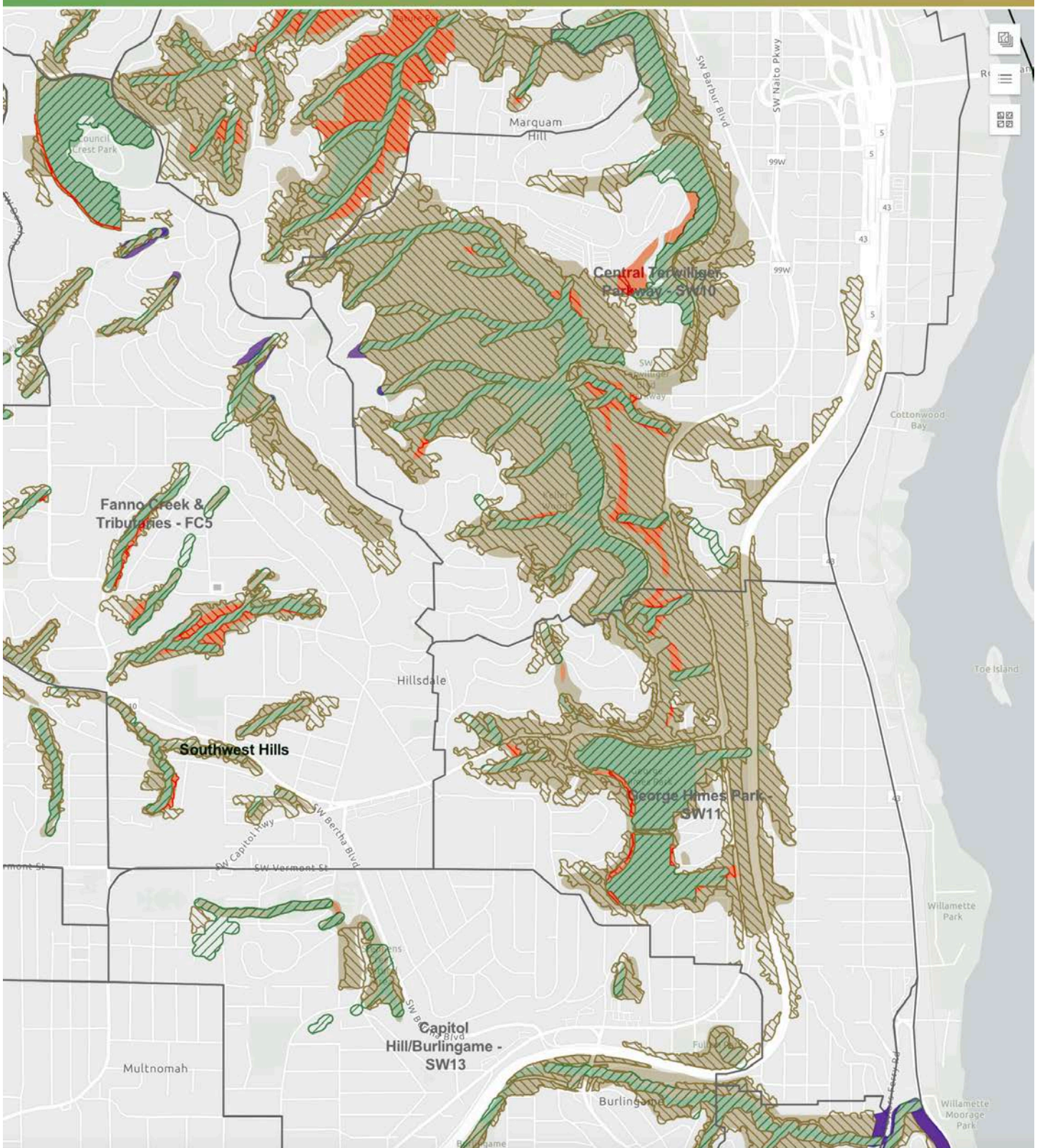
Marquam Hill Ravine SW9
 Central Terwilliger Parkway SW10
 George Himes Park SW11
 Fanno Creek & Tributaries FC5

Areas:

Council Crest (top of Fanno Creek
 Watershed)
 Marquam Hill
 Hillsdale

Tributaries to Fanno Creek

Marquam Nature Park (significant)
 George Himes Park
 Keller Woods
 SW Terwilliger Parkway

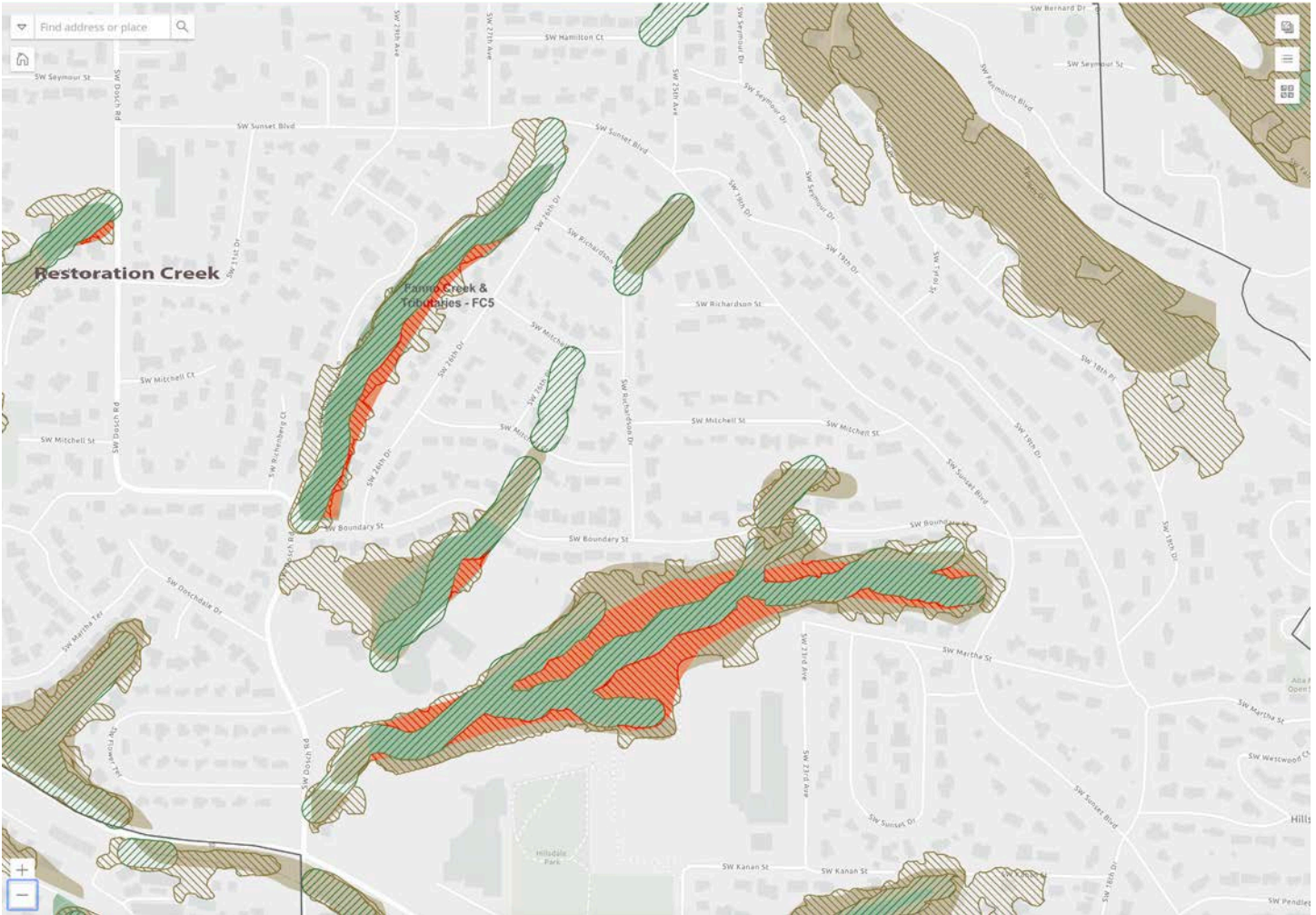


4

**PORTLAND
SOUTHWEST HILLS:**
Fanno Creek & Tributaries FC5

Areas:
Hillsdale

Tributaries to Fanno Creek
Restoration Creek
Albert Kelly Park



Protection zone "P" is the highest zone for protection
Conservation zone "C" opens up for possible construction

Green solid = current Protection "P" zone
Brown solid = current Conservation "C" zone
Green stripes = proposed Protection "P" zone
Brown stripes = proposed Conservation "C" zone
Green solid intersecting with Brown stripes (or red shown here) =
"P" zones changing to "C" zones
Green solid with no intersecting green stripes = "P" zone
changing to no zone protection

To view interactive maps here:

<https://www.portland.gov/bps/ezones/ezones-map-app>

Click on "View the interactive map"

Enter property address

Click on upper right icon with three horizontal lines

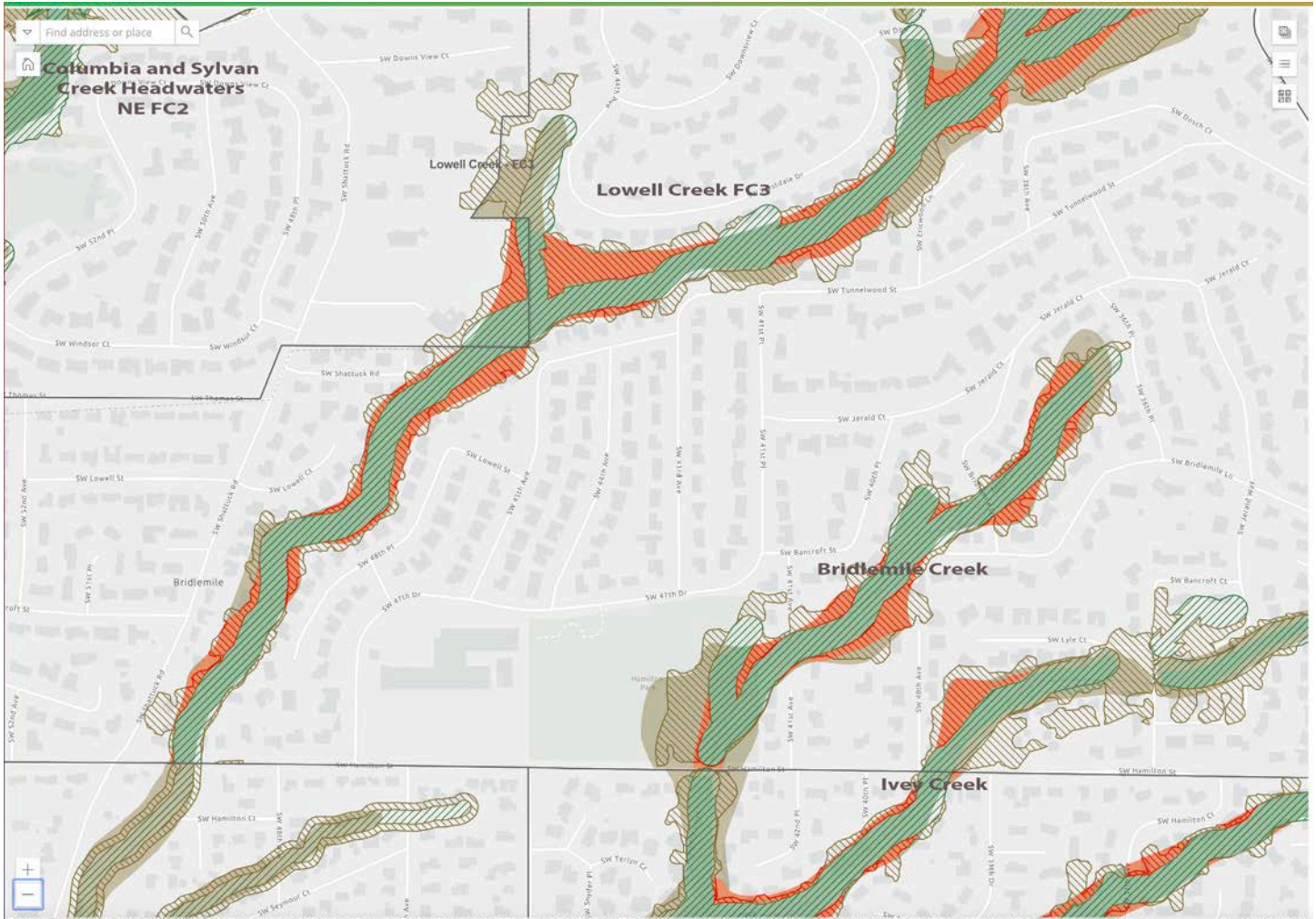
Turn on "Existing Environmental Overlay" to see both current and proposed ezones

5

**PORTLAND
SOUTHWEST HILLS:**
Lowell Creek FC3
Bridlemile Creek
Ivey Creek

Areas:
Bridlemile
Hamilton Park

Tributaries to Fanno Creek



Protection zone "P" is the highest zone for protection
Conservation zone "C" opens up for possible construction

Green solid = current Protection "P" zone
Brown solid = current Conservation "C" zone
Green stripes = proposed Protection "P" zone
Brown stripes = proposed Conservation "C" zone
Green solid intersecting with Brown stripes (or red shown here) =
"P" zones changing to "C" zones
Green solid with no intersecting green stripes = "P" zone
changing to no zone protection

To view interactive maps here:

<https://www.portland.gov/bps/ezones/ezones-map-app>

Click on "View the interactive map"

Enter property address

Click on upper right icon with three horizontal lines

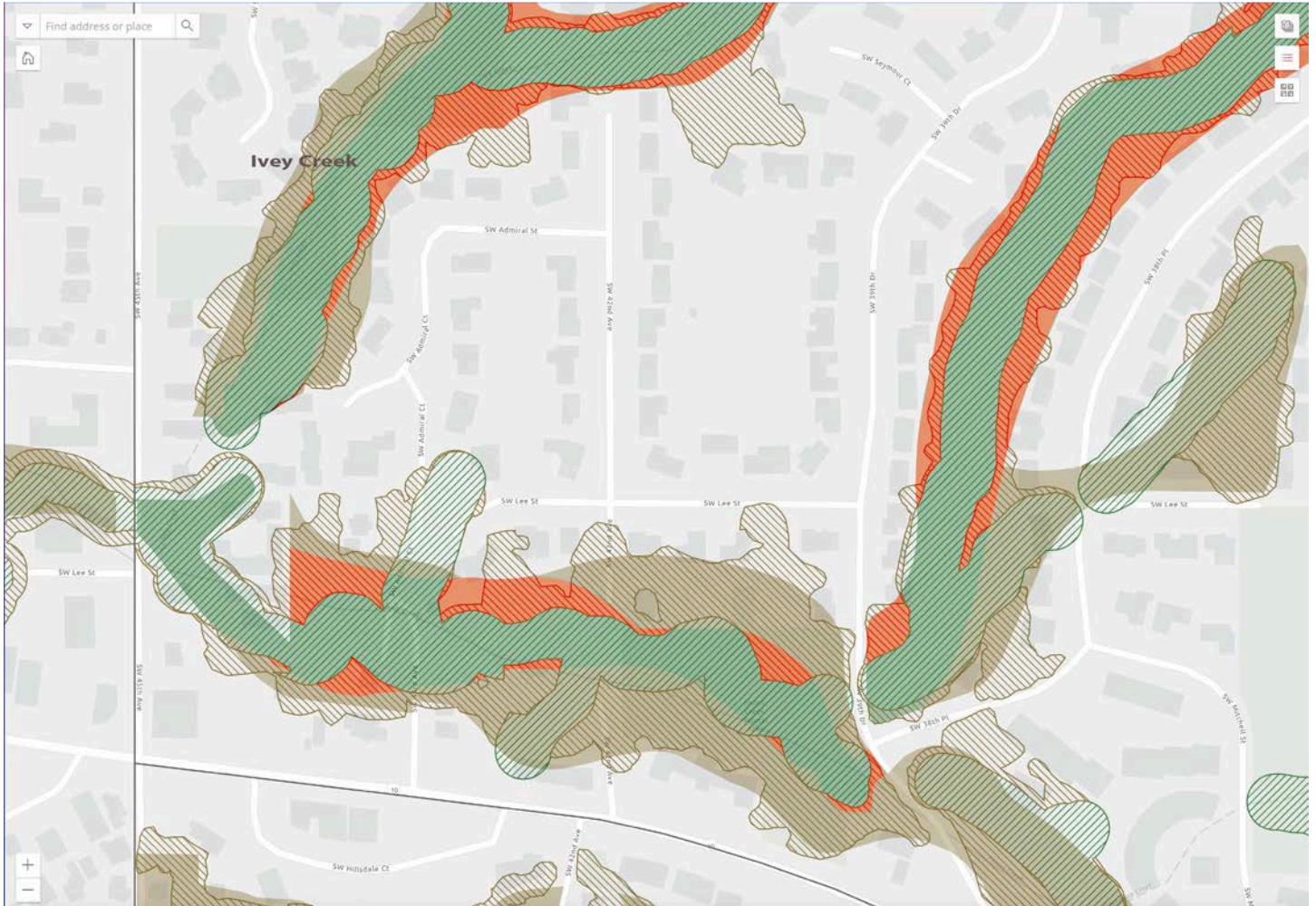
Turn on "Existing Environmental Overlay" to see both current and proposed ezones

6

**PORTLAND
SOUTHWEST HILLS:**
Fanno Creek & Tributaries FC5
Ivey Creek
Fanno Creek

Areas:
Glencullen

Tributaries to Fanno Creek
Fanno Creek Natural Area



Protection zone "P" is the highest zone for protection
Conservation zone "C" opens up for possible construction

- Green solid = current Protection "P" zone
- Brown solid = current Conservation "C" zone
- Green stripes = proposed Protection "P" zone
- Brown stripes = proposed Conservation "C" zone
- Green solid intersecting with Brown stripes (or red shown here) = "P" zones changing to "C" zones
- Green solid with no intersecting green stripes = "P" zone changing to no zone protection

To view interactive maps here:

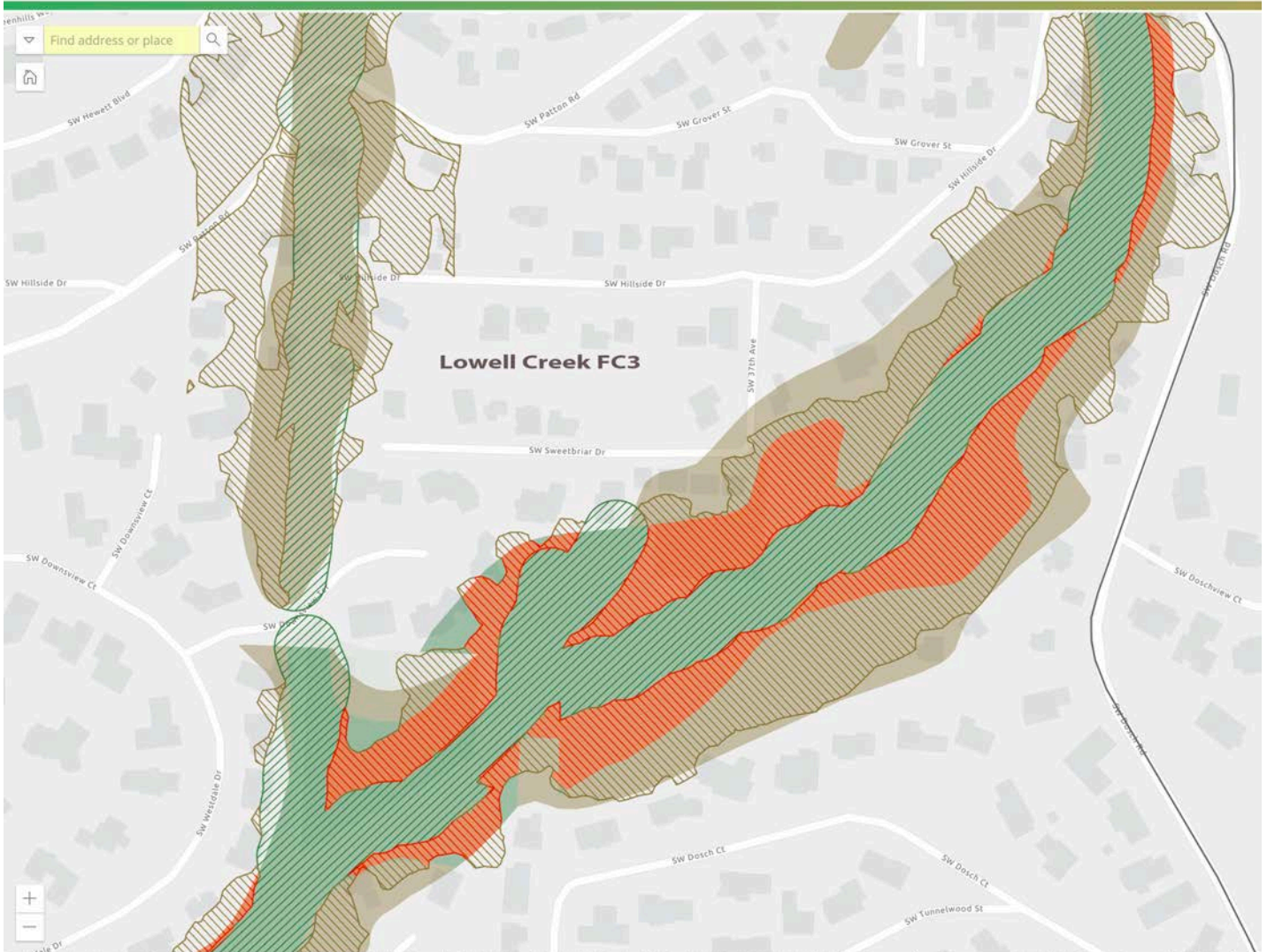
<https://www.portland.gov/bps/ezones/ezones-map-app>

Click on "View the interactive map"

Enter property address

Click on upper right icon with three horizontal lines

Turn on "Existing Environmental Overlay" to see both current and proposed ezones



Protection zone "P" is the highest zone for protection
 Conservation zone "C" opens up for possible construction

Green solid = current Protection "P" zone
 Brown solid = current Conservation "C" zone
 Green stripes = proposed Protection "P" zone
 Brown stripes = proposed Conservation "C" zone
 Green solid intersecting with Brown stripes (or red shown here) =
 "P" zones changing to "C" zones
 Green solid with no intersecting green stripes = "P" zone
 changing to no zone protection

To view interactive maps here:

<https://www.portland.gov/bps/ezones/ezones-map-app>

Click on "View the interactive map"

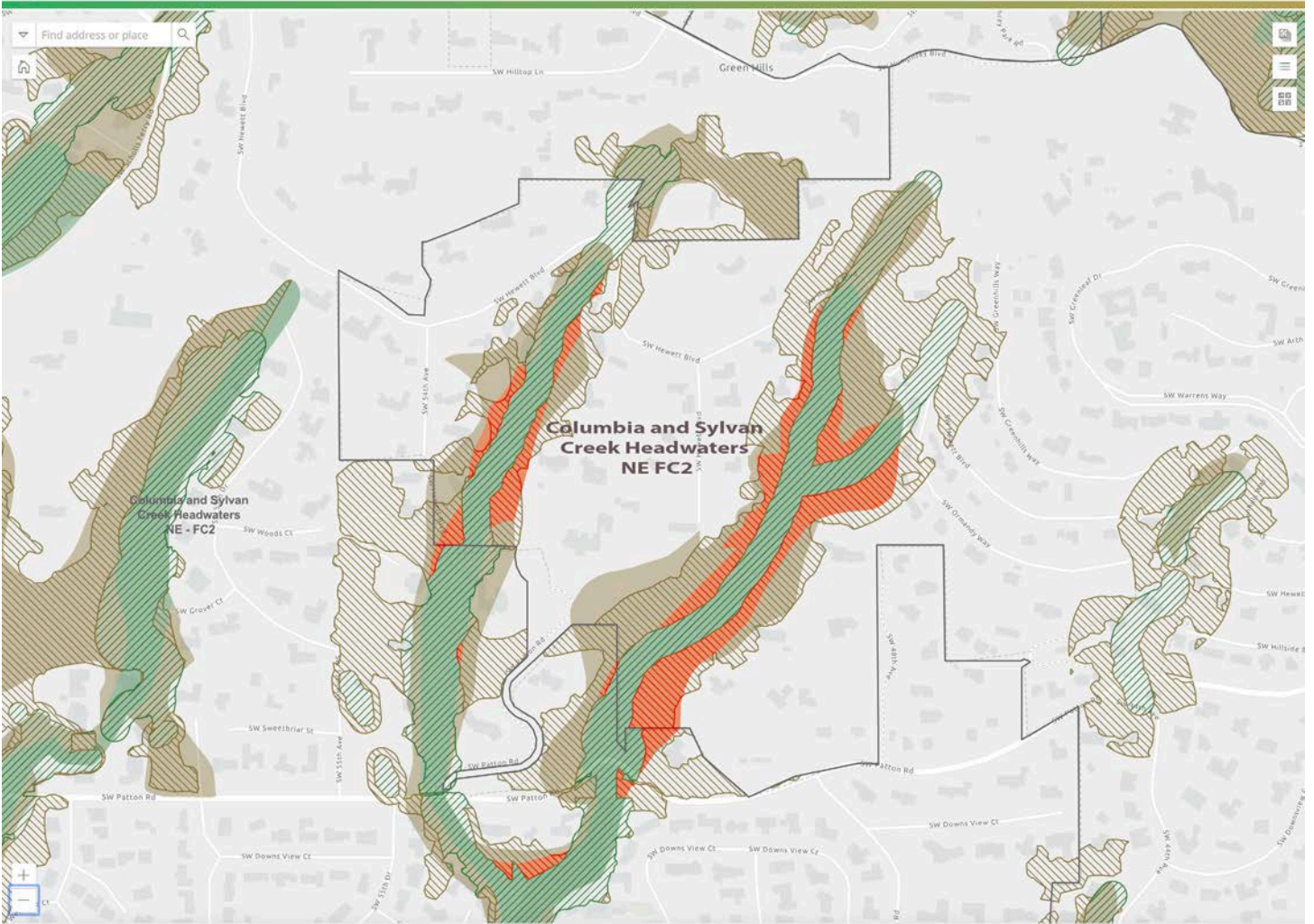
Enter property address

Click on upper right icon with three horizontal lines

Turn on "Existing Environmental Overlay" to see both current and proposed ezones

**PORTLAND
SOUTHWEST HILLS:
Columbia and Sylvan Creek
Headwaters NE FC2**

Tributaries to Fanno Creek



Protection zone "P" is the highest zone for protection
Conservation zone "C" opens up for possible construction

- Green solid = current Protection "P" zone
- Brown solid = current Conservation "C" zone
- Green stripes = proposed Protection "P" zone
- Brown stripes = proposed Conservation "C" zone
- Green solid intersecting with Brown stripes (or red shown here) = "P" zones changing to "C" zones
- Green solid with no intersecting green stripes = "P" zone changing to no zone protection

To view interactive maps here:

<https://www.portland.gov/bps/ezones/ezones-map-app>

Click on "View the interactive map"

Enter property address

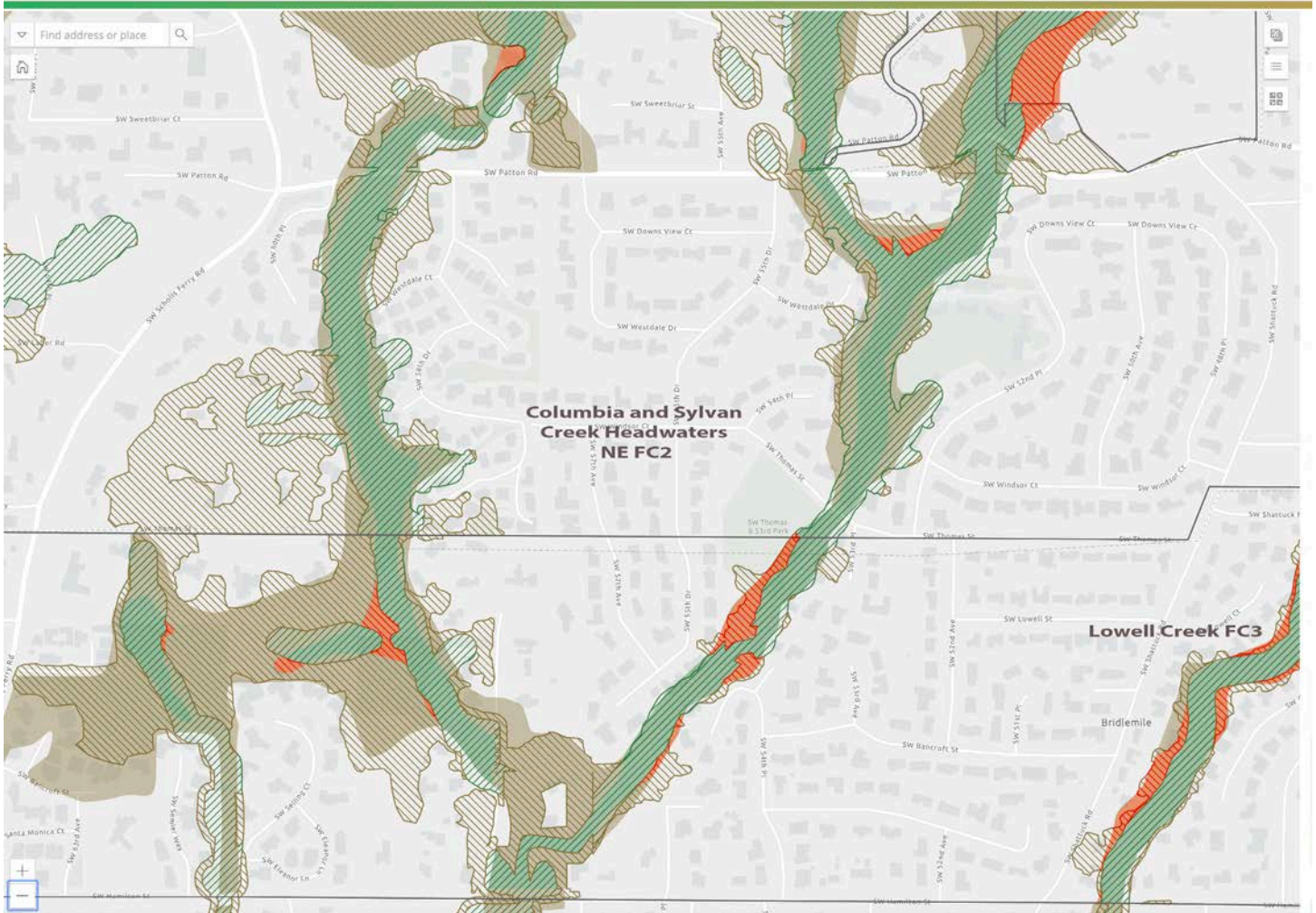
Click on upper right icon with three horizontal lines

Turn on "Existing Environmental Overlay" to see both current and proposed ezones

**PORTLAND
SOUTHWEST HILLS:**
Columbia and Sylvan Creek
Headwaters NE FC2
Lowell Creek FC3

Areas:
Bridlemile

Tributaries to Fanno Creek



Protection zone "P" is the highest zone for protection
Conservation zone "C" opens up for possible construction

Green solid = current Protection "P" zone
Brown solid = current Conservation "C" zone
Green stripes = proposed Protection "P" zone
Brown stripes = proposed Conservation "C" zone
Green solid intersecting with Brown stripes (or red shown here) =
"P" zones changing to "C" zones
Green solid with no intersecting green stripes = "P" zone
changing to no zone protection

To view interactive maps here:

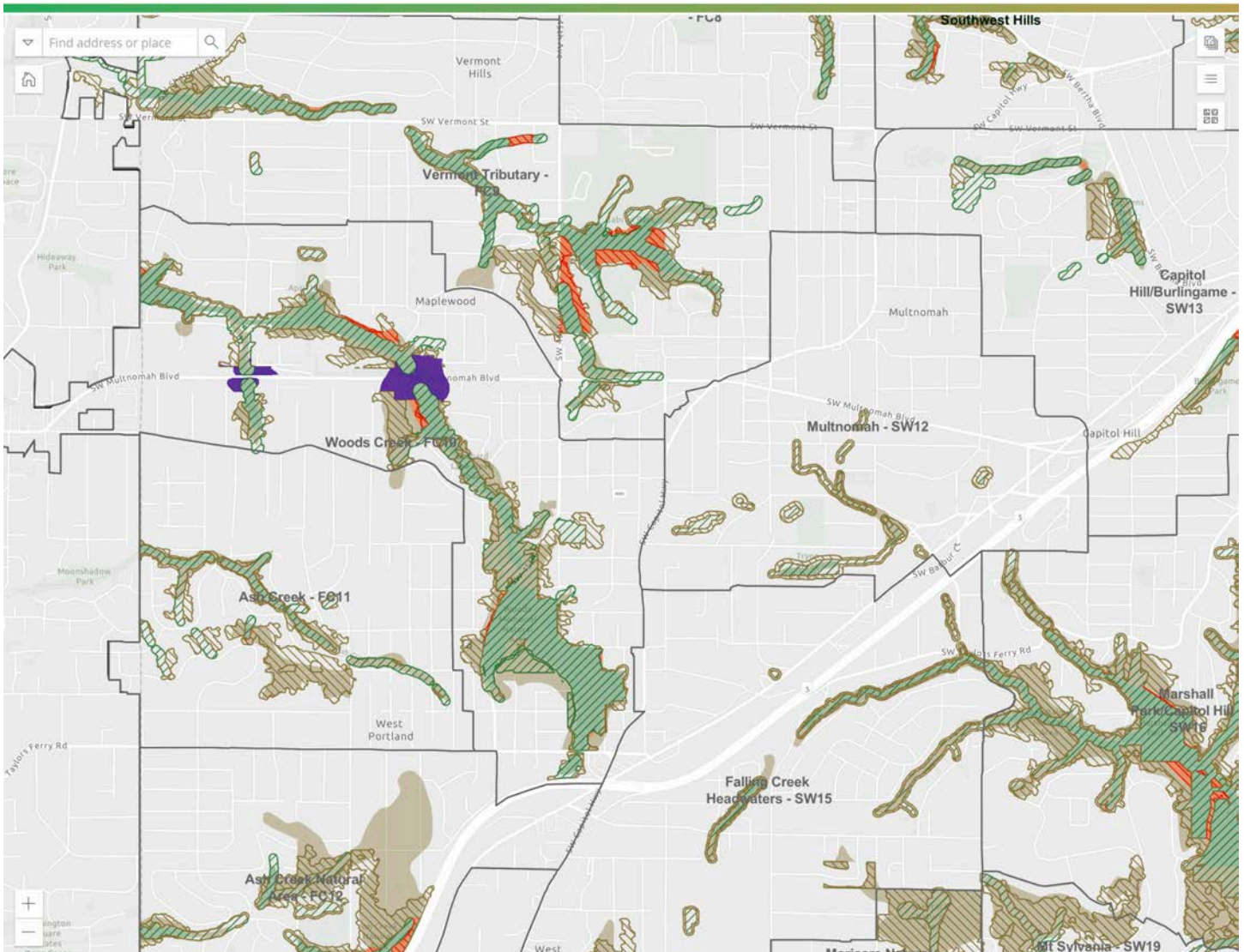
<https://www.portland.gov/bps/ezones/ezones-map-app>

Click on "View the interactive map"

Enter property address

Click on upper right icon with three horizontal lines

Turn on "Existing Environmental Overlay" to see both current and proposed ezones



Protection zone "P" is the highest zone for protection
 Conservation zone "C" opens up for possible construction

Green solid = current Protection "P" zone
 Brown solid = current Conservation "C" zone
 Green stripes = proposed Protection "P" zone
 Brown stripes = proposed Conservation "C" zone
 Green solid intersecting with Brown stripes (or red shown here) =
 "P" zones changing to "C" zones
 Green solid with no intersecting green stripes = "P" zone
 changing to no zone protection

To view interactive maps here:

<https://www.portland.gov/bps/ezones/ezones-map-app>

Click on "View the interactive map"

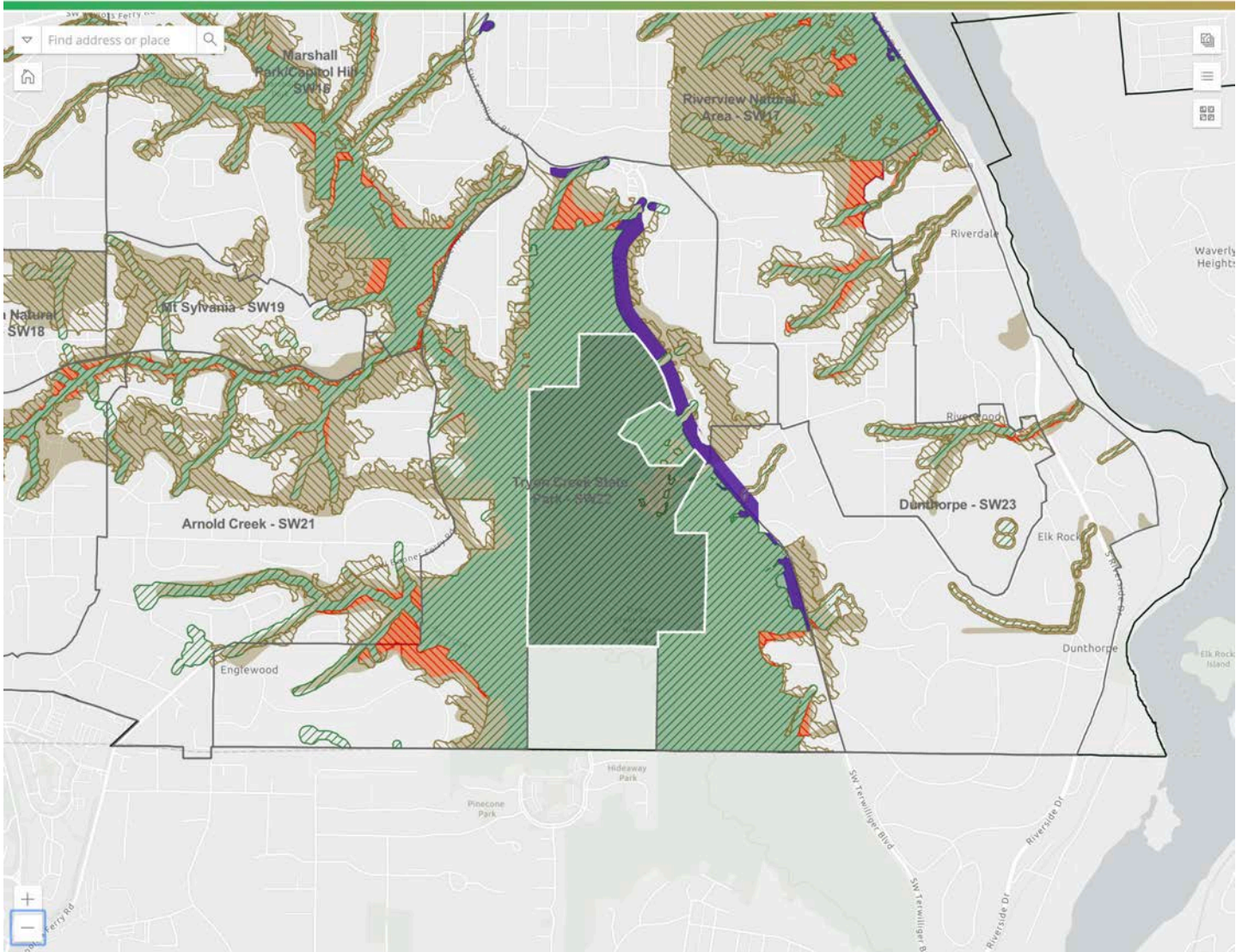
Enter property address

Click on upper right icon with three horizontal lines

Turn on "Existing Environmental Overlay" to see both current and proposed ezones

**PORTLAND
SOUTHWEST HILLS:**

- Marshall Park / Capitol Hill SW16
- Riverview Natural Area SW17
- Mt. Sylvania SW19
- Arnold Creek SW21
- Tryon Creek State Park SW22
- Dunthorpe SW23



Protection zone "P" is the highest zone for protection
 Conservation zone "C" opens up for possible construction

- Green solid = current Protection "P" zone
- Brown solid = current Conservation "C" zone
- Green stripes = proposed Protection "P" zone
- Brown stripes = proposed Conservation "C" zone
- Green solid intersecting with Brown stripes (or red shown here) = "P" zones changing to "C" zones
- Green solid with no intersecting green stripes = "P" zone changing to no zone protection

To view interactive maps here:

<https://www.portland.gov/bps/ezones/ezones-map-app>

Click on "View the interactive map"

Enter property address

Click on upper right icon with three horizontal lines

Turn on "Existing Environmental Overlay" to see both current and proposed ezones

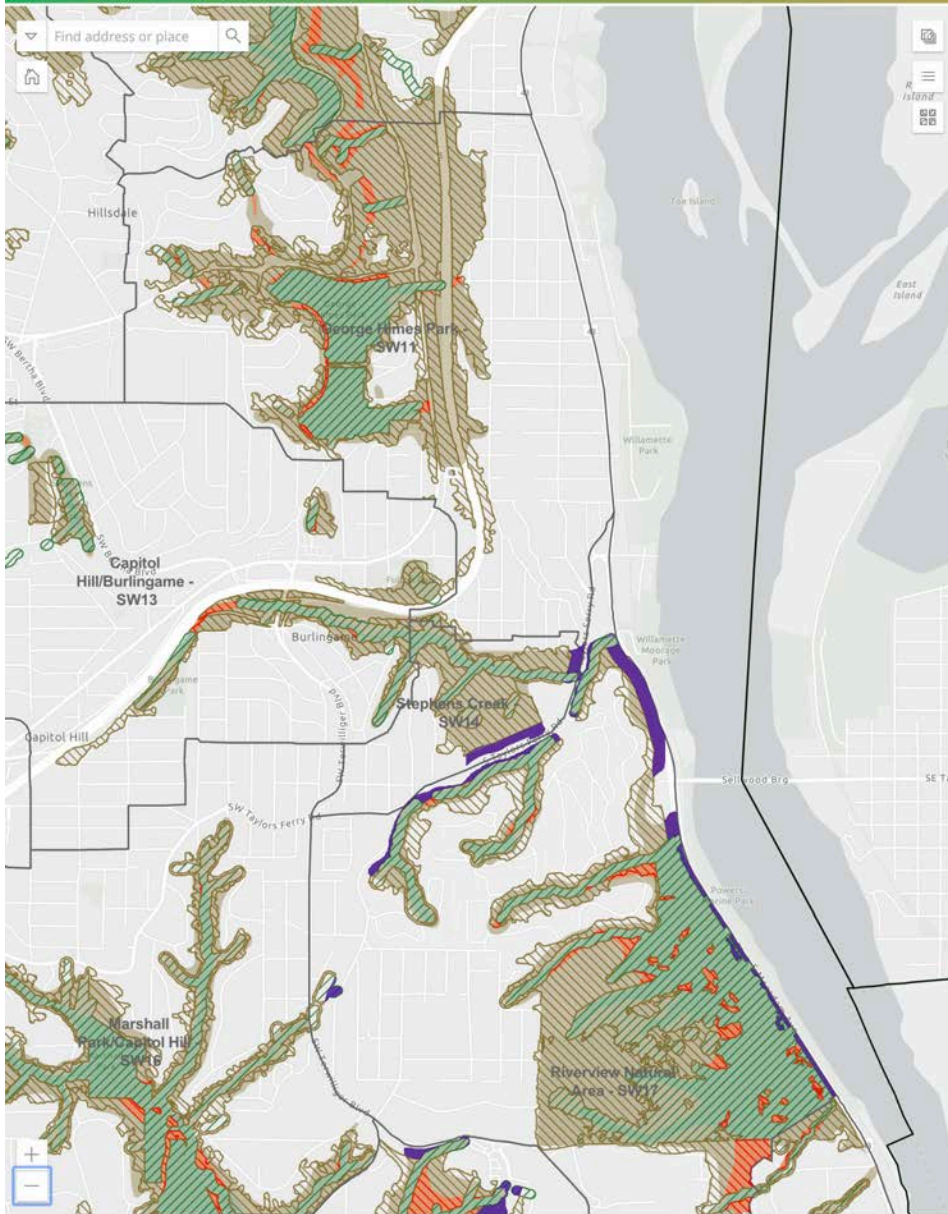
15

**PORTLAND
SOUTHWEST HILLS:**

- George Himes Park SW11
- Capitol Hill/Burlingame SW13
- Stephens Creek SW14
- Marshall Park/Capitol Hill SW16
- Riverview Natural Area SW17

- Hillsdale
- South Portland Neighborhood Assoc
- South Waterfront
- John's Landing
- Lair Hill
- Collins View Neighborhood Assoc

- George Himes Park
- Riverview Natural Area



Protection zone "P" is the highest zone for protection
 Conservation zone "C" opens up for possible construction

- Green solid = current Protection "P" zone
- Brown solid = current Conservation "C" zone
- Green stripes = proposed Protection "P" zone
- Brown stripes = proposed Conservation "C" zone
- Green solid intersecting with Brown stripes (or red shown here) = "P" zones changing to "C" zones
- Green solid with no intersecting green stripes = "P" zone changing to no zone protection

To view interactive maps here:

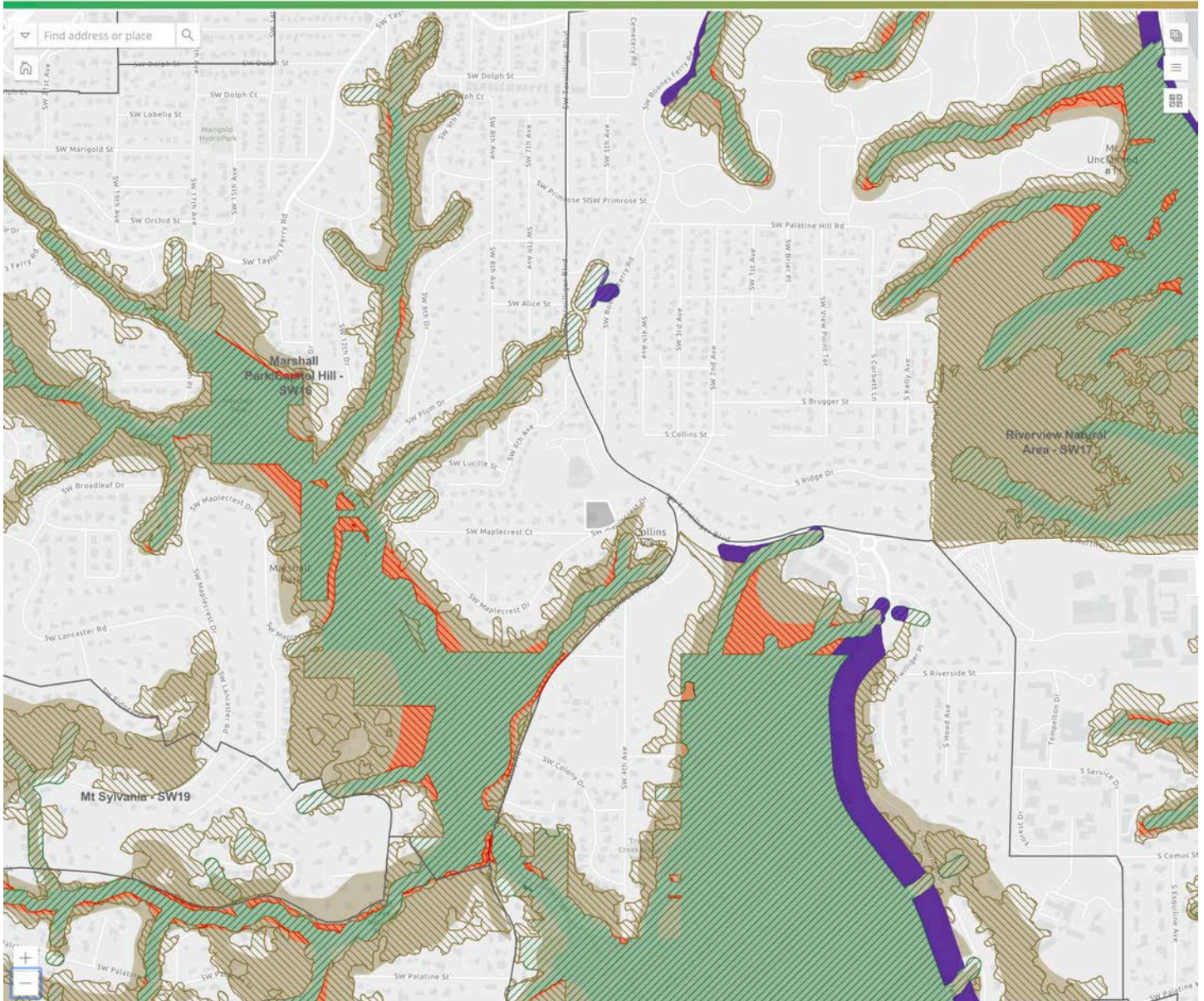
<https://www.portland.gov/bps/ezones/ezones-map-app>

Click on "View the interactive map"

Enter property address

Click on upper right icon with three horizontal lines

Turn on "Existing Environmental Overlay" to see both current and proposed ezones



Protection zone "P" is the highest zone for protection
Conservation zone "C" opens up for possible construction

Green solid = current Protection "P" zone
Brown solid = current Conservation "C" zone
Green stripes = proposed Protection "P" zone
Brown stripes = proposed Conservation "C" zone
Green solid intersecting with Brown stripes (or red shown here) =
"P" zones changing to "C" zones
Green solid with no intersecting green stripes = "P" zone
changing to no zone protection

To view interactive maps here:

<https://www.portland.gov/bps/ezones/ezones-map-app>

Click on "View the interactive map"

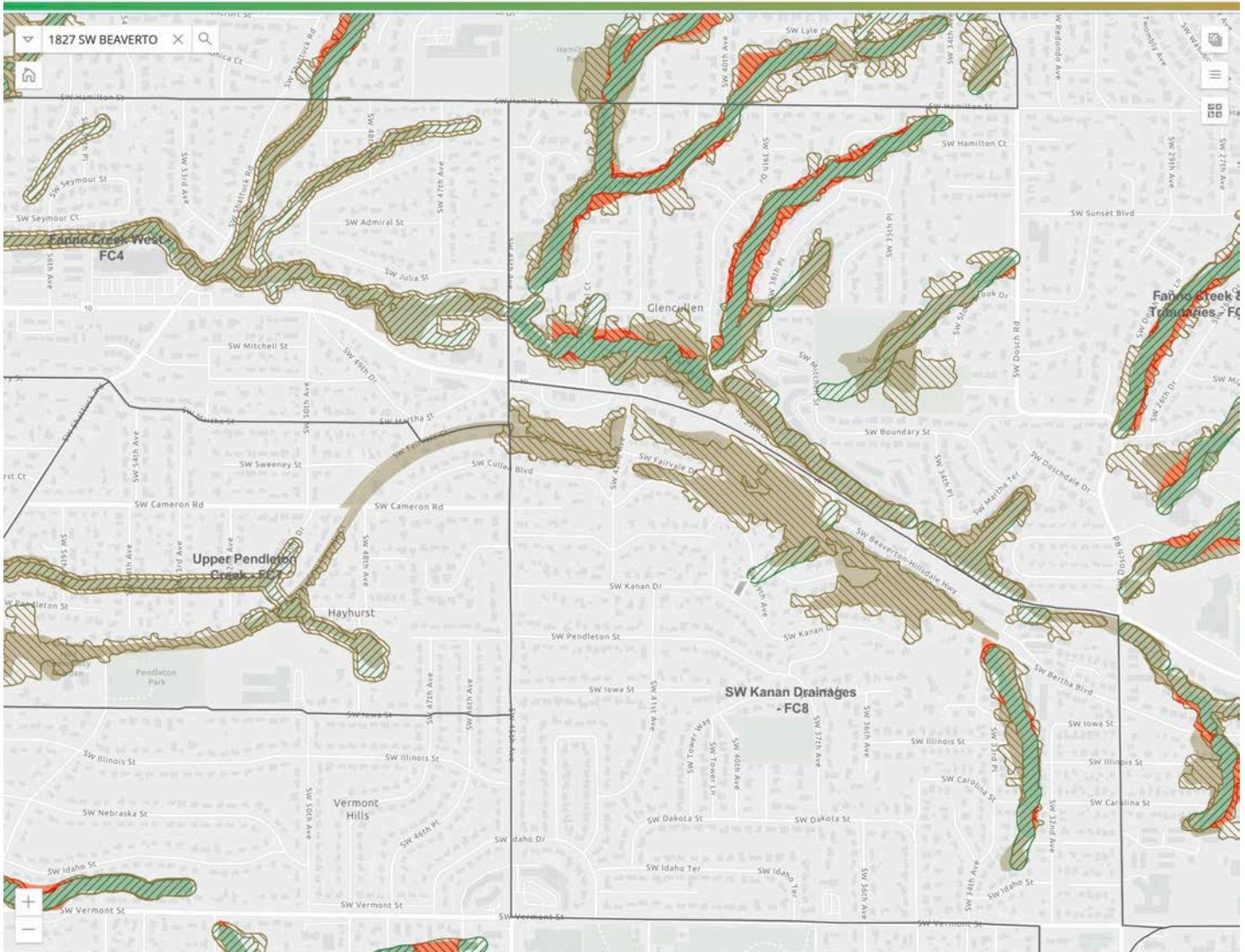
Enter property address

Click on upper right icon with three horizontal lines

Turn on "Existing Environmental Overlay" to see both current and proposed ezones

PORTLAND
SOUTHWEST HILLS:
Fanno Creek West FC4
Upper Pendleton Creek FC7
SW Kanan Drainages FC8

Hayhurst Neighborhood Assoc
Vermont Hills
Bridlemile Neighborhood Assoc



Protection zone "P" is the highest zone for protection
Conservation zone "C" opens up for possible construction

Green solid = current Protection "P" zone
Brown solid = current Conservation "C" zone
Green stripes = proposed Protection "P" zone
Brown stripes = proposed Conservation "C" zone
Green solid intersecting with Brown stripes (or red shown here) =
"P" zones changing to "C" zones
Green solid with no intersecting green stripes = "P" zone
changing to no zone protection

To view interactive maps here:

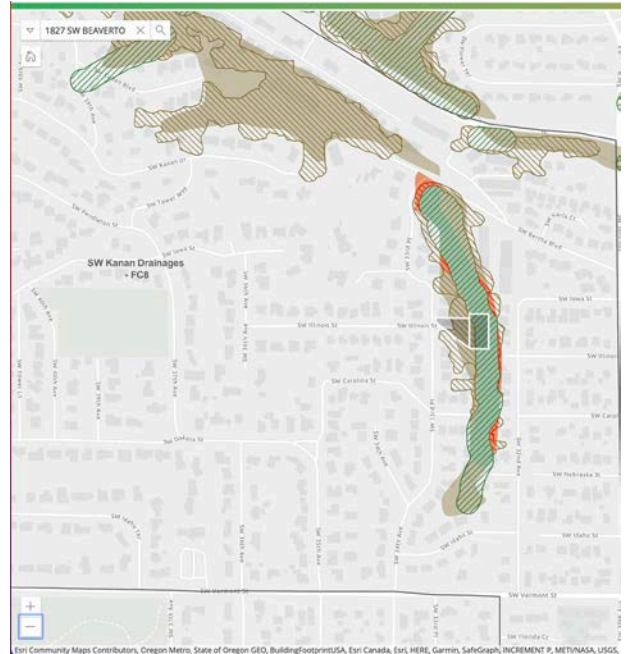
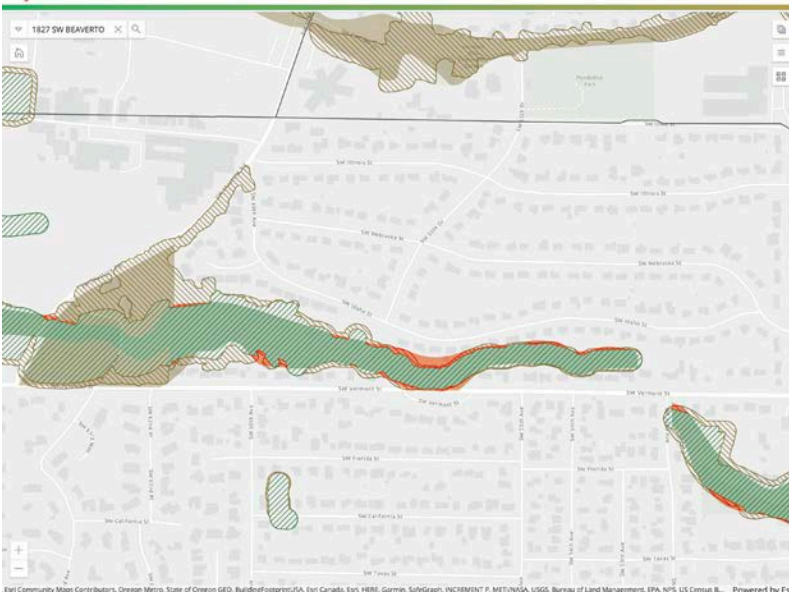
<https://www.portland.gov/bps/ezones/ezones-map-app>

Click on "View the interactive map"

Enter property address

Click on upper right icon with three horizontal lines

Turn on "Existing Environmental Overlay" to see both current and proposed ezones



Protection zone "P" is the highest zone for protection
Conservation zone "C" opens up for possible construction

Green solid = current Protection "P" zone
Brown solid = current Conservation "C" zone
Green stripes = proposed Protection "P" zone
Brown stripes = proposed Conservation "C" zone
Green solid intersecting with Brown stripes (or red shown here) =
"P" zones changing to "C" zones
Green solid with no intersecting green stripes = "P" zone
changing to no zone protection

To view interactive maps here:

<https://www.portland.gov/bps/ezones/ezones-map-app>

Click on "View the interactive map"

Enter property address

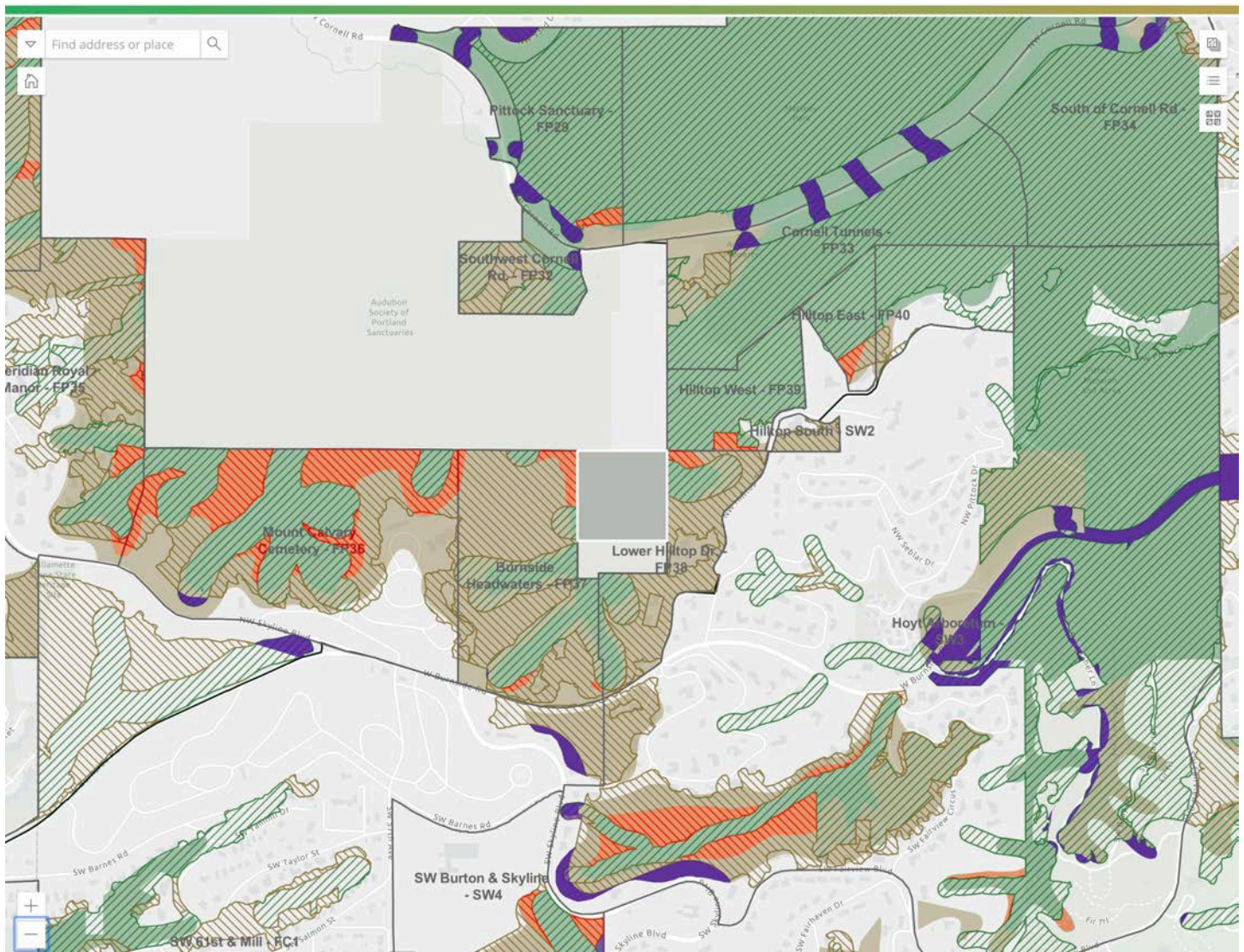
Click on upper right icon with three horizontal lines

Turn on "Existing Environmental Overlay" to see both current and proposed ezones

**PORTLAND
SOUTHWEST HILLS:**

- Meridian Royal Manor FP35
- Mount Calvary Cemetery FP36
- Pittock Sanctuary FP29
- Hilltop West FP39
- Hilltop East FP40
- Hilltop South SW2
- Hoyt Arboretum SW3
- SW Burton & Skyline SW4

Hoyt Arboretum
Pittock Mansion



Protection zone "P" is the highest zone for protection
Conservation zone "C" opens up for possible construction

- Green solid = current Protection "P" zone
- Brown solid = current Conservation "C" zone
- Green stripes = proposed Protection "P" zone
- Brown stripes = proposed Conservation "C" zone
- Green solid intersecting with Brown stripes (or red shown here) = "P" zones changing to "C" zones
- Green solid with no intersecting green stripes = "P" zone changing to no zone protection

To view interactive maps here:

<https://www.portland.gov/bps/ezones/ezones-map-app>

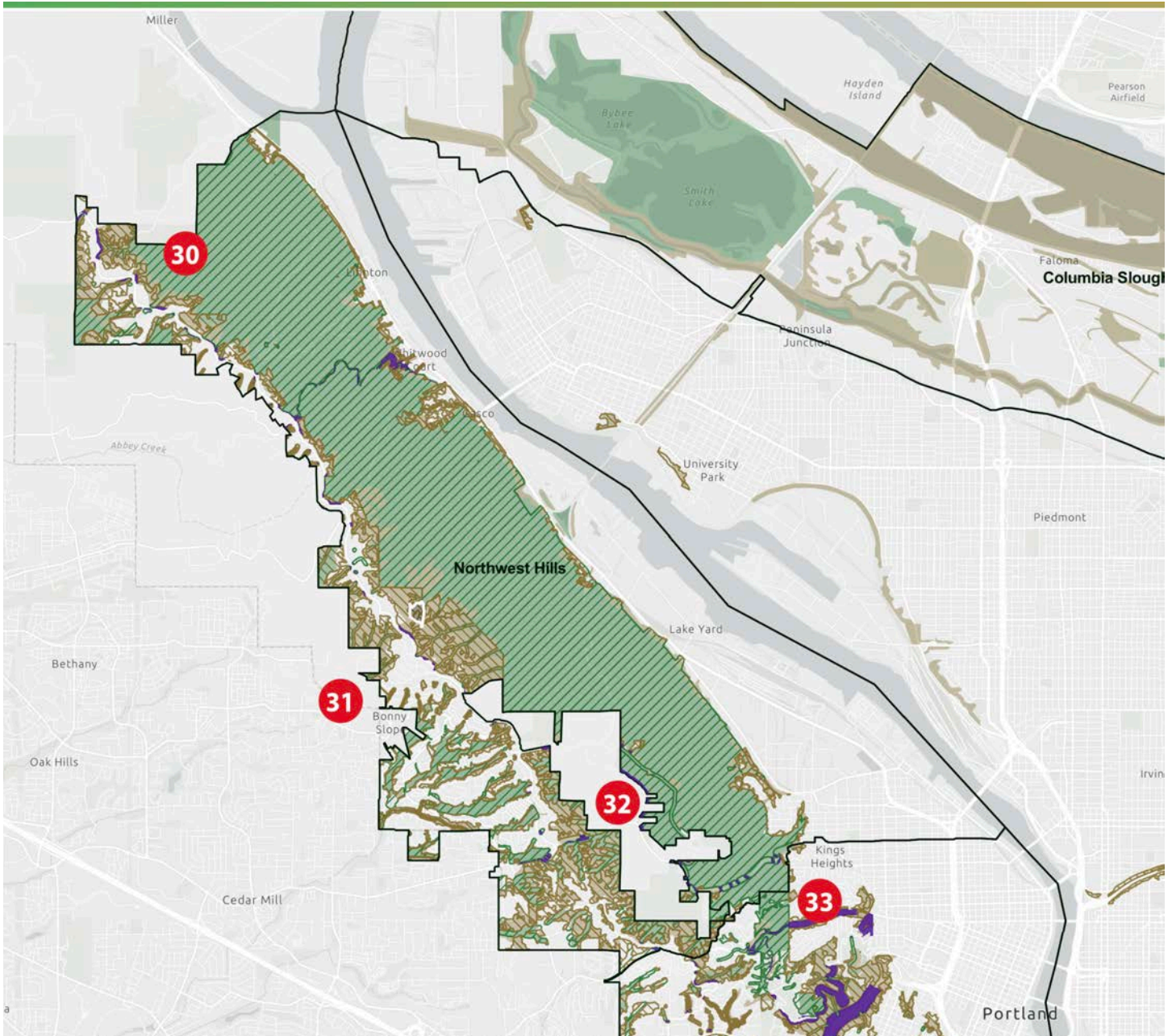
Click on "View the interactive map"

Enter property address

Click on upper right icon with three horizontal lines

Turn on "Existing Environmental Overlay" to see both current and proposed ezones

**PORTLAND
NORTHWEST HILLS (overall map)
SOUTHWEST HILLS (partial)**



Conservation zone "C" opens up for possible construction

<https://www.portland.gov/bps/ezones/ezones-map-app>

Click on "View the interactive map"

Green solid = current Protection "P" zone

Enter property address

Brown solid = current Conservation "C" zone

Click on upper right icon with three horizontal lines

Green stripes = proposed Protection "P" zone

Turn on "Existing Environmental Overlay" to see both current and proposed ezones

Brown stripes = proposed Conservation "C" zone

Green solid intersecting with Brown stripes (or red shown here) =

"P" zones changing to "C" zones

Green solid with no intersecting green stripes = "P" zone

changing to no zone protection

32

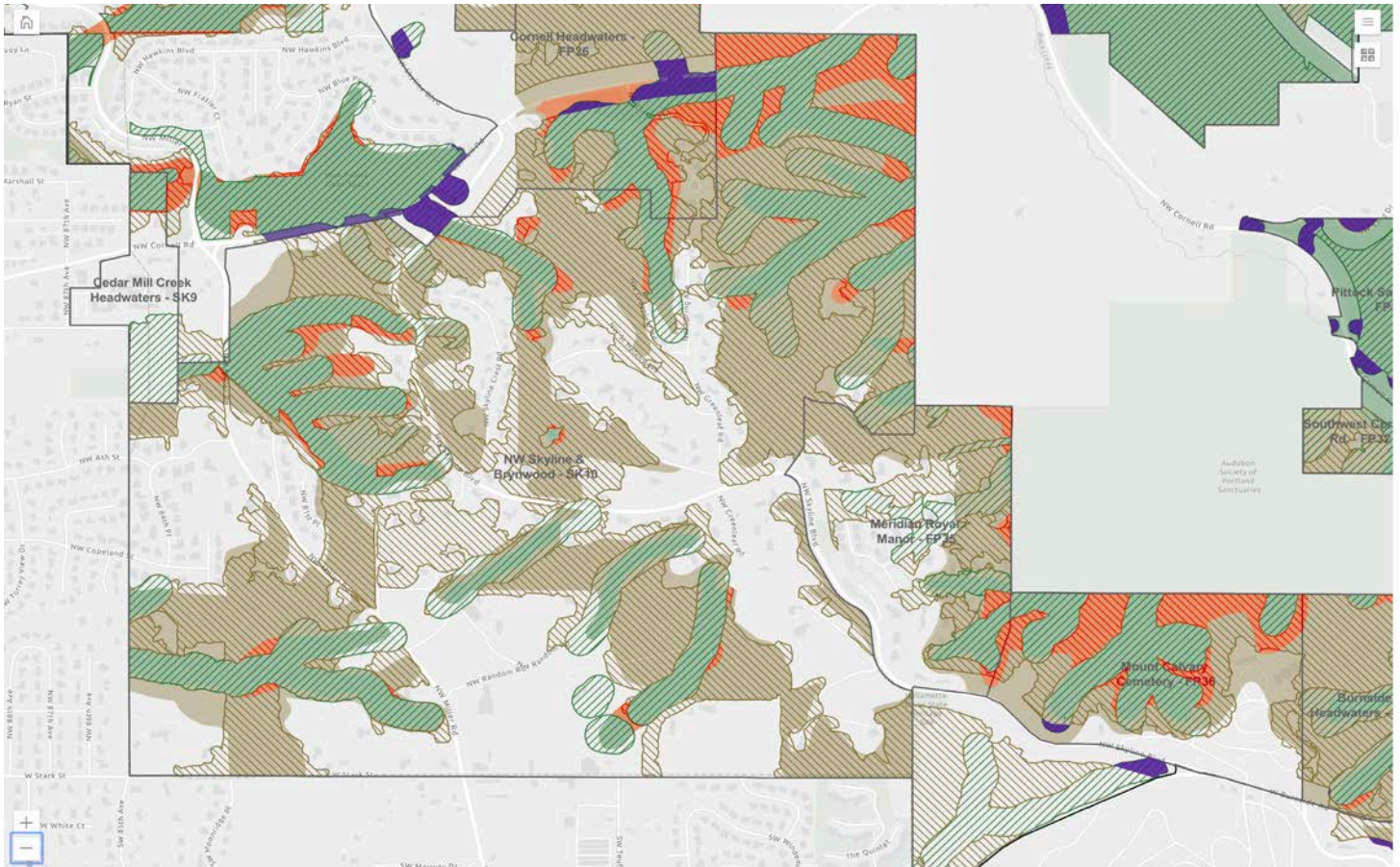
PORTLAND NORTHWEST HILLS:

Cedar Mill Creek Headwaters SK9

NW Skyline & Brynwood SK18

Meridian Royal Manor FP35

Mount Calvary Cemetery FP36



Protection zone "P" is the highest zone for protection
Conservation zone "C" opens up for possible construction

Green solid = current Protection "P" zone
 Brown solid = current Conservation "C" zone
 Green stripes = proposed Protection "P" zone
 Brown stripes = proposed Conservation "C" zone
 Green solid intersecting with Brown stripes (or red shown here) =
 "P" zones changing to "C" zones
 Green solid with no intersecting green stripes = "P" zone
 changing to no zone protection

To view interactive maps here:

<https://www.portland.gov/bps/ezones/ezones-map-app>

Click on "View the interactive map"

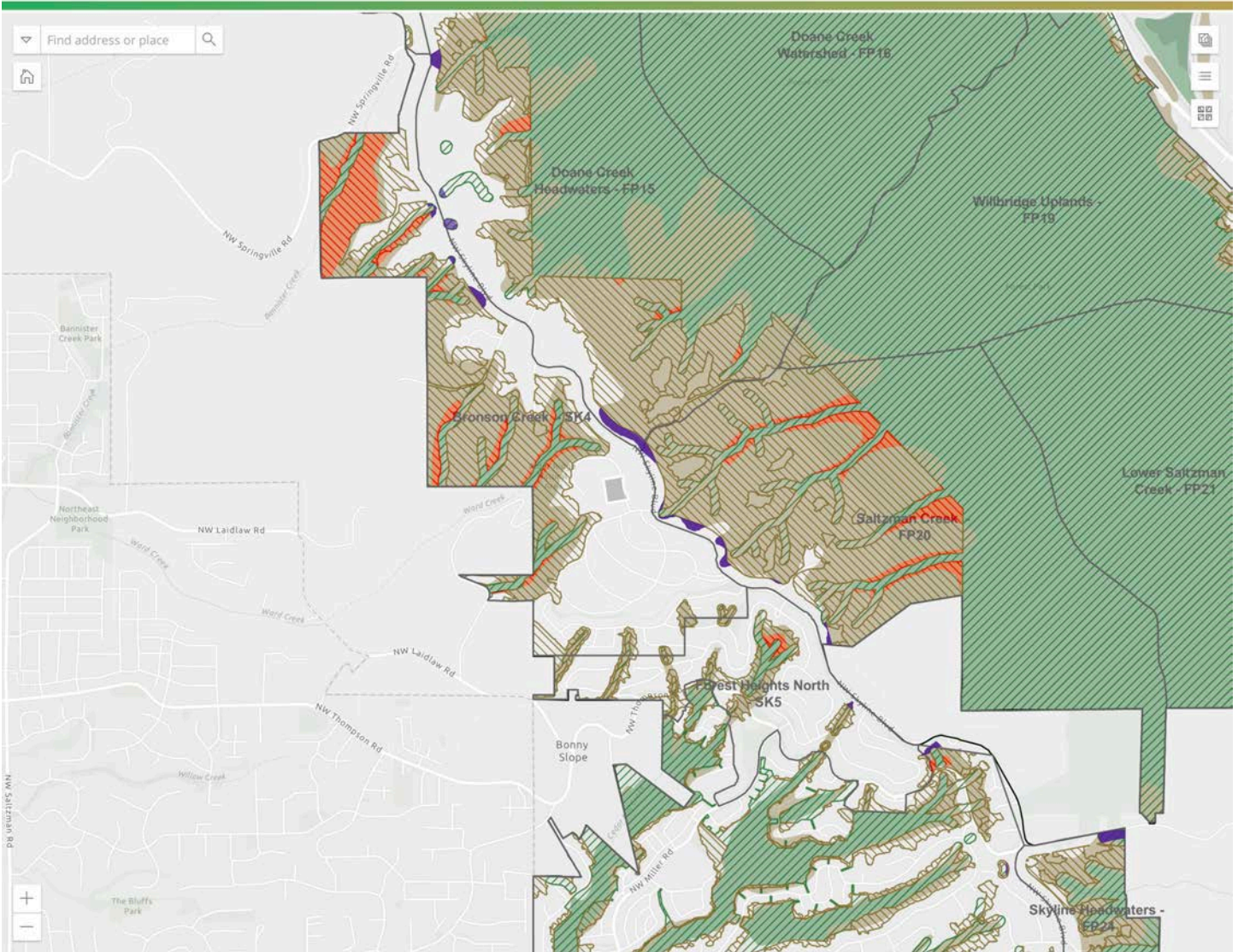
Enter property address

Click on upper right icon with three horizontal lines

Turn on "Existing Environmental Overlay" to see both current and proposed ezones

PORTLAND NORTHWEST HILLS:

- Doane Creek Headwaters FP15
- Doane Creek Watershed FP16
- Wilbridge Uplands DP19
- Lower Saltzman Creek FP21
- Bronson Creek SK4
- Forest Heights North SK5
- Skyline Headwaters FP24

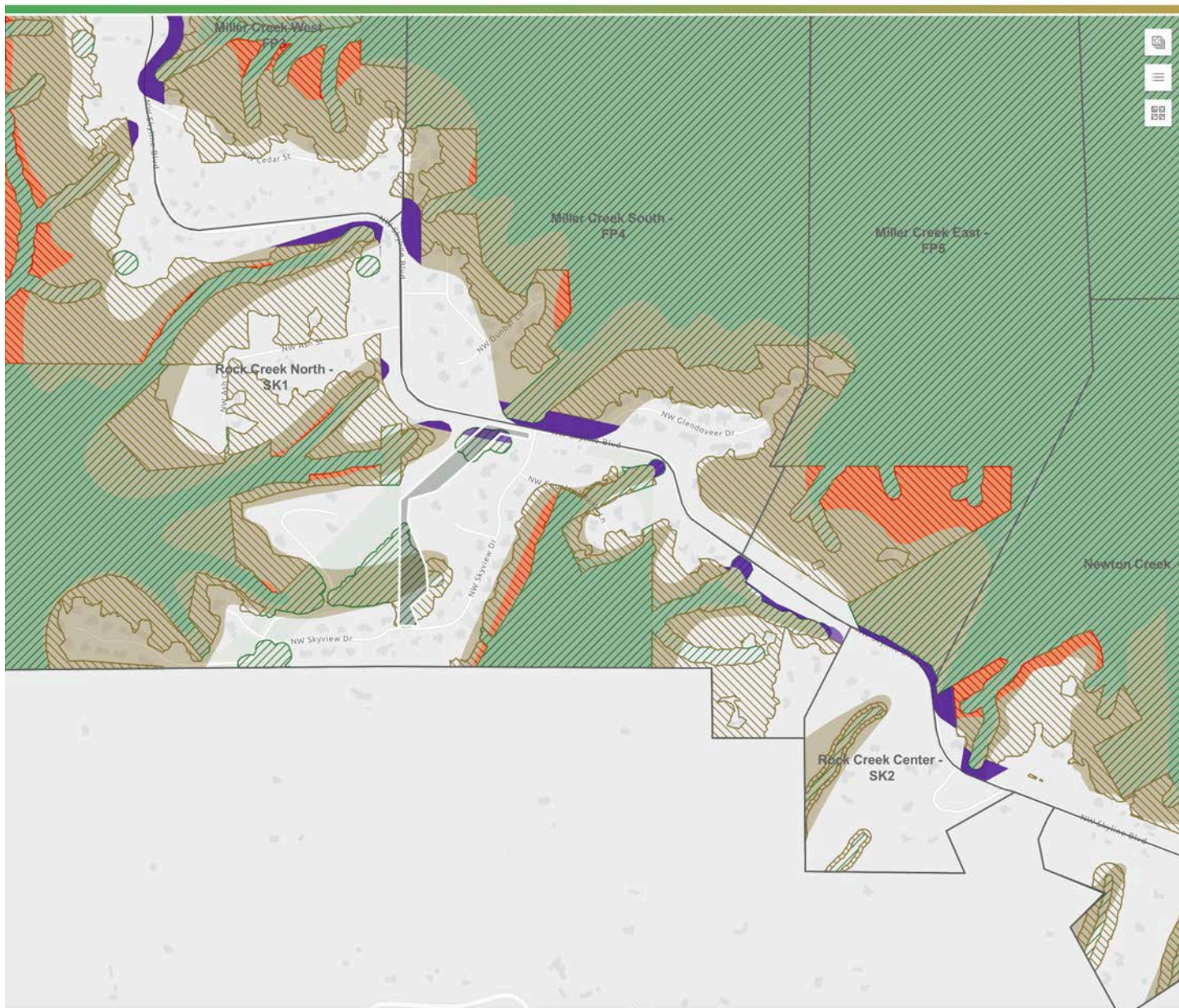


Protection zone "P" is the highest zone for protection
 Conservation zone "C" opens up for possible construction

- Green solid = current Protection "P" zone
- Brown solid = current Conservation "C" zone
- Green stripes = proposed Protection "P" zone
- Brown stripes = proposed Conservation "C" zone
- Green solid intersecting with Brown stripes (or red shown here) = "P" zones changing to "C" zones
- Green solid with no intersecting green stripes = "P" zone changing to no zone protection

To view interactive maps here:
<https://www.portland.gov/bps/ezones/ezones-map-app>
 Click on "View the interactive map"
 Enter property address
 Click on upper right icon with three horizontal lines
 Turn on "Existing Environmental Overlay" to see both current and proposed ezones

**PORTLAND
NORTHWEST HILLS:**
Miller Creek West FP3
Miller Creek North FP4
Miller Creek East FP5
Rock Creek North SK1
Newton Creek FP7



Protection zone "P" is the highest zone for protection
Conservation zone "C" opens up for possible construction

Green solid = current Protection "P" zone
Brown solid = current Conservation "C" zone
Green stripes = proposed Protection "P" zone
Brown stripes = proposed Conservation "C" zone
Green solid intersecting with Brown stripes (or red shown here) =
"P" zones changing to "C" zones
Green solid with no intersecting green stripes = "P" zone
changing to no zone protection

To view interactive maps here:

<https://www.portland.gov/bps/ezones/ezones-map-app>

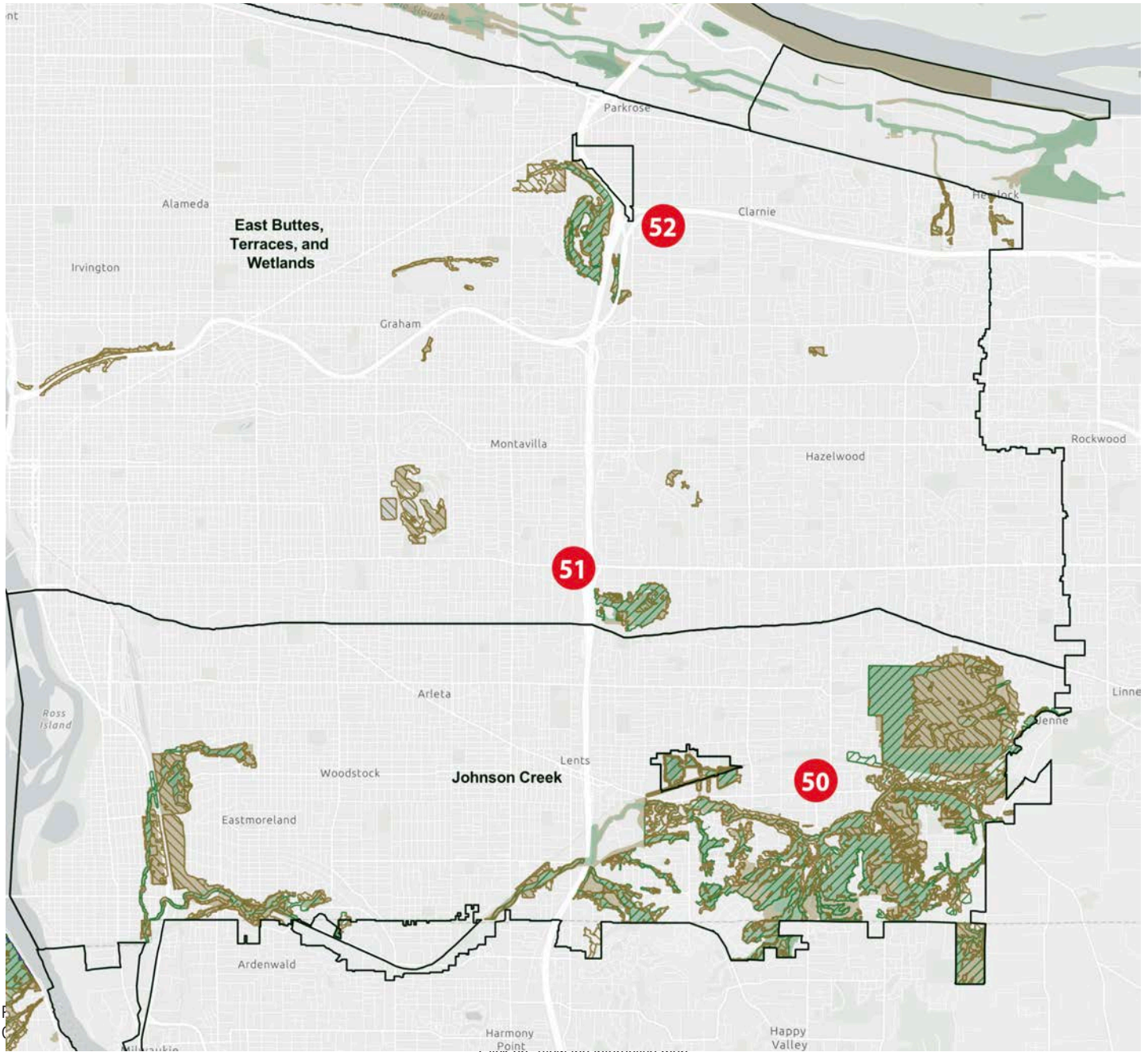
Click on "View the interactive map"

Enter property address

Click on upper right icon with three horizontal lines

Turn on "Existing Environmental Overlay" to see both current and proposed ezones

**PORTLAND
SOUTHEAST (overall map)**



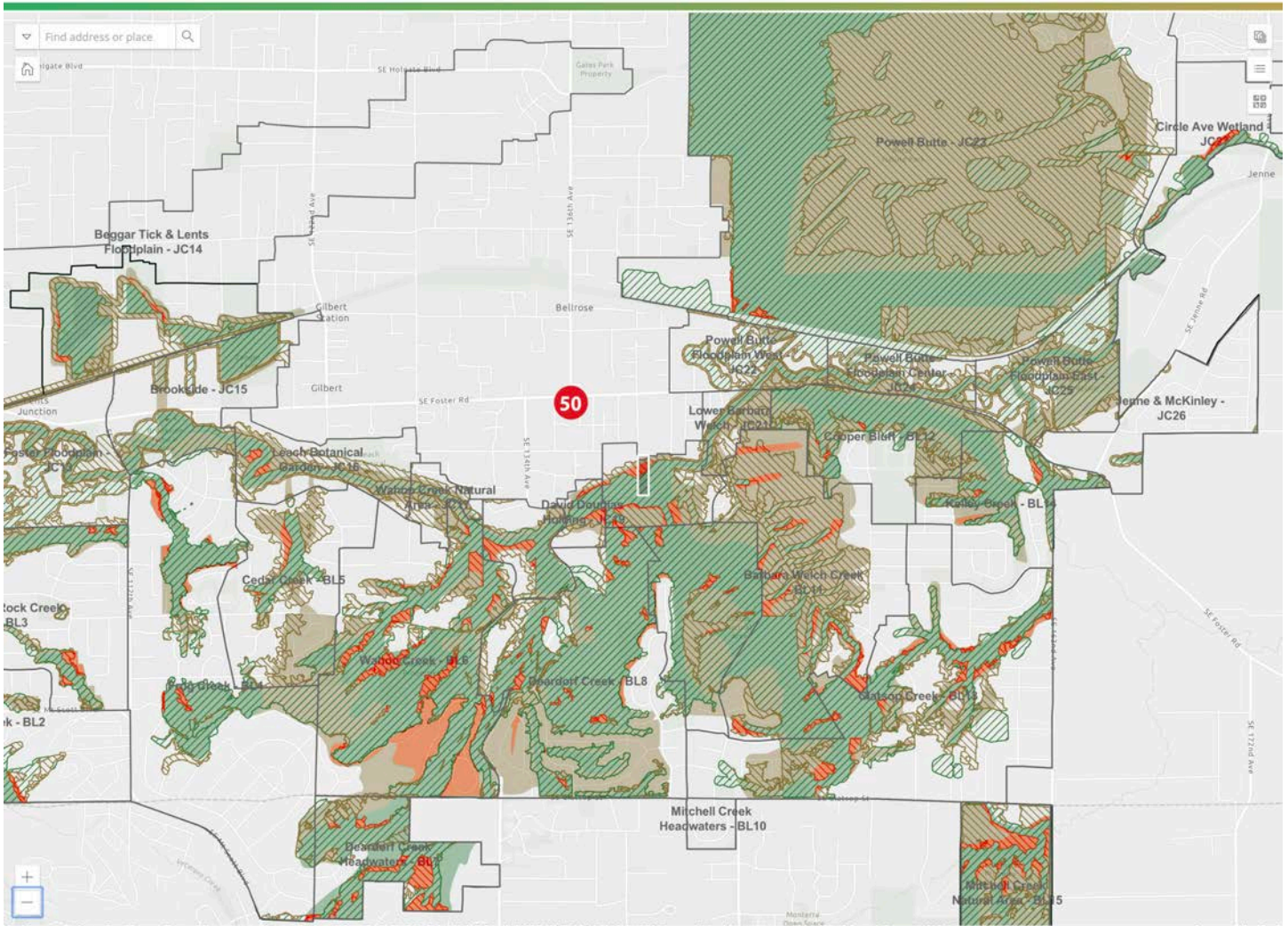
Green solid = current Protection "P" zone
 Brown solid = current Conservation "C" zone
 Green stripes = proposed Protection "P" zone
 Brown stripes = proposed Conservation "C" zone
 Green solid intersecting with Brown stripes (or red shown here) =
 "P" zones changing to "C" zones
 Green solid with no intersecting green stripes = "P" zone
 changing to no zone protection

Click on view the interactive map
 Enter property address
 Click on upper right icon with three horizontal lines
 Turn on "Existing Environmental Overlay" to see both current and proposed ezones

**PORTLAND
SOUTHEAST:**

- Foster Floodplain JC13
- Beggar Tick & Lents Floodplain JC14
- Brookside JC15
- Leach Botanical Garden JC16
- Wahoo Creek Natural Area JC17
- Deardorf Creek Natural Area JC18
- David Douglas Holding JC19
- Powell Butte JC23
- Circle Ave Wetland JC27

- Rock Creek BL3
- Frog Creek BL4
- Cedar Creek BL5
- Wahoo Creek BL6
- Deardorf Creek Headwaters BL7
- Deardorf Creek Headwaters BL8
- Barbara Welch Creek BL11
- Cooper Bluff BL12
- Clatsop Creek BL13
- Kelley Creek BL14
- Mitchell Creek Natural Area BL15



Protection zone "P" is the highest zone for protection
 Conservation zone "C" opens up for possible construction

Green solid = current Protection "P" zone
 Brown solid = current Conservation "C" zone
 Green stripes = proposed Protection "P" zone
 Brown stripes = proposed Conservation "C" zone
 Green solid intersecting with Brown stripes (or red shown here) =
 "P" zones changing to "C" zones
 Green solid with no intersecting green stripes = "P" zone
 changing to no zone protection

To view interactive maps here:

<https://www.portland.gov/bps/ezones/ezones-map-app>

Click on "View the interactive map"

Enter property address

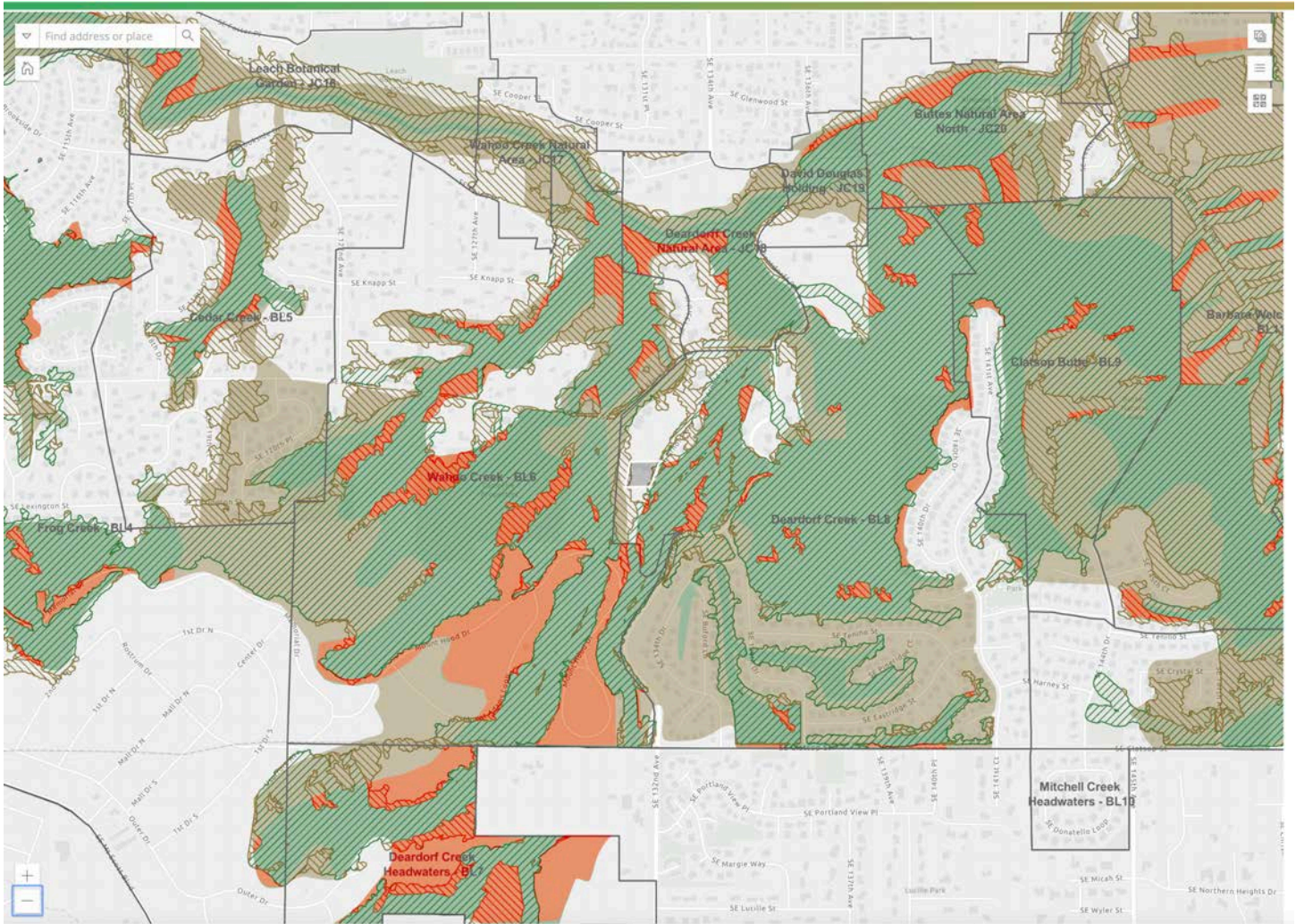
Click on upper right icon with three horizontal lines

Turn on "Existing Environmental Overlay" to see both current and proposed ezones

**PORTLAND
SOUTHEAST:**

- Foster Floodplain JC13
- Beggar Tick & Lents Floodplain JC14
- Brookside JC15
- Leach Botanical Garden JC16
- Wahoo Creek Natural Area JC17
- Deardorf Creek Natural Area JC18
- David Douglas Holding JC19
- Buttes National Area North JC20

- Rock Creek BL3
- Frog Creek BL4
- Cedar Creek BL5
- Wahoo Creek BL6
- Deardorf Creek Headwaters BL7
- Deardorf Creek Headwaters BL8
- Barbara Welch Creek BL11



Protection zone "P" is the highest zone for protection
 Conservation zone "C" opens up for possible construction

- Green solid = current Protection "P" zone
- Brown solid = current Conservation "C" zone
- Green stripes = proposed Protection "P" zone
- Brown stripes = proposed Conservation "C" zone
- Green solid intersecting with Brown stripes (or red shown here) = "P" zones changing to "C" zones
- Green solid with no intersecting green stripes = "P" zone changing to no zone protection

To view interactive maps here:

<https://www.portland.gov/bps/ezones/ezones-map-app>

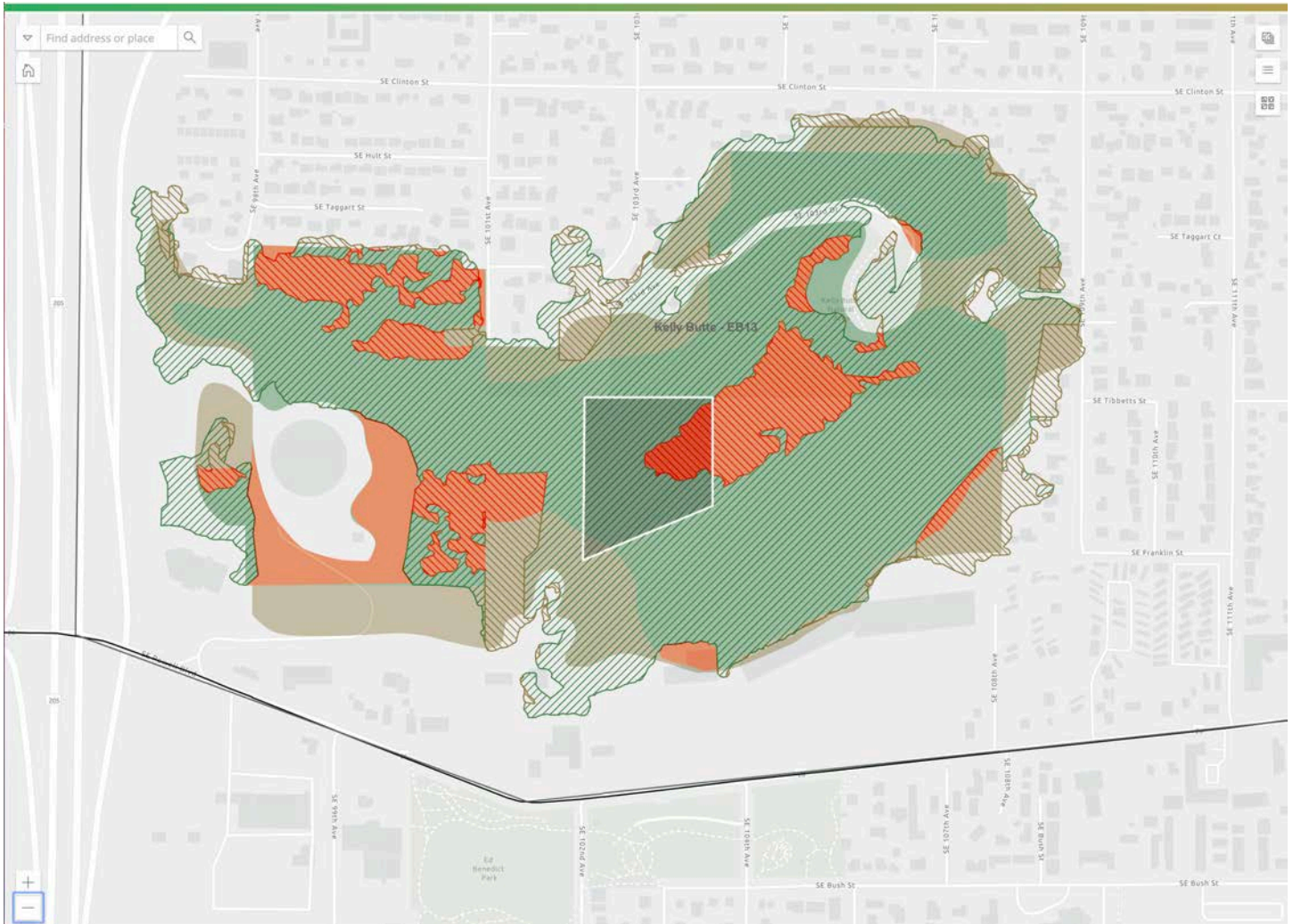
Click on "View the interactive map"

Enter property address

Click on upper right icon with three horizontal lines

Turn on "Existing Environmental Overlay" to see both current and proposed ezones

PORTLAND
SOUTHEAST:
Kelly Butte EB13



Protection zone "P" is the highest zone for protection
Conservation zone "C" opens up for possible construction

- Green solid = current Protection "P" zone
- Brown solid = current Conservation "C" zone
- Green stripes = proposed Protection "P" zone
- Brown stripes = proposed Conservation "C" zone
- Green solid intersecting with Brown stripes (or red shown here) = "P" zones changing to "C" zones
- Green solid with no intersecting green stripes = "P" zone changing to no zone protection

To view interactive maps here:

<https://www.portland.gov/bps/ezones/ezones-map-app>

Click on "View the interactive map"

Enter property address

Click on upper right icon with three horizontal lines

Turn on "Existing Environmental Overlay" to see both current and proposed ezones

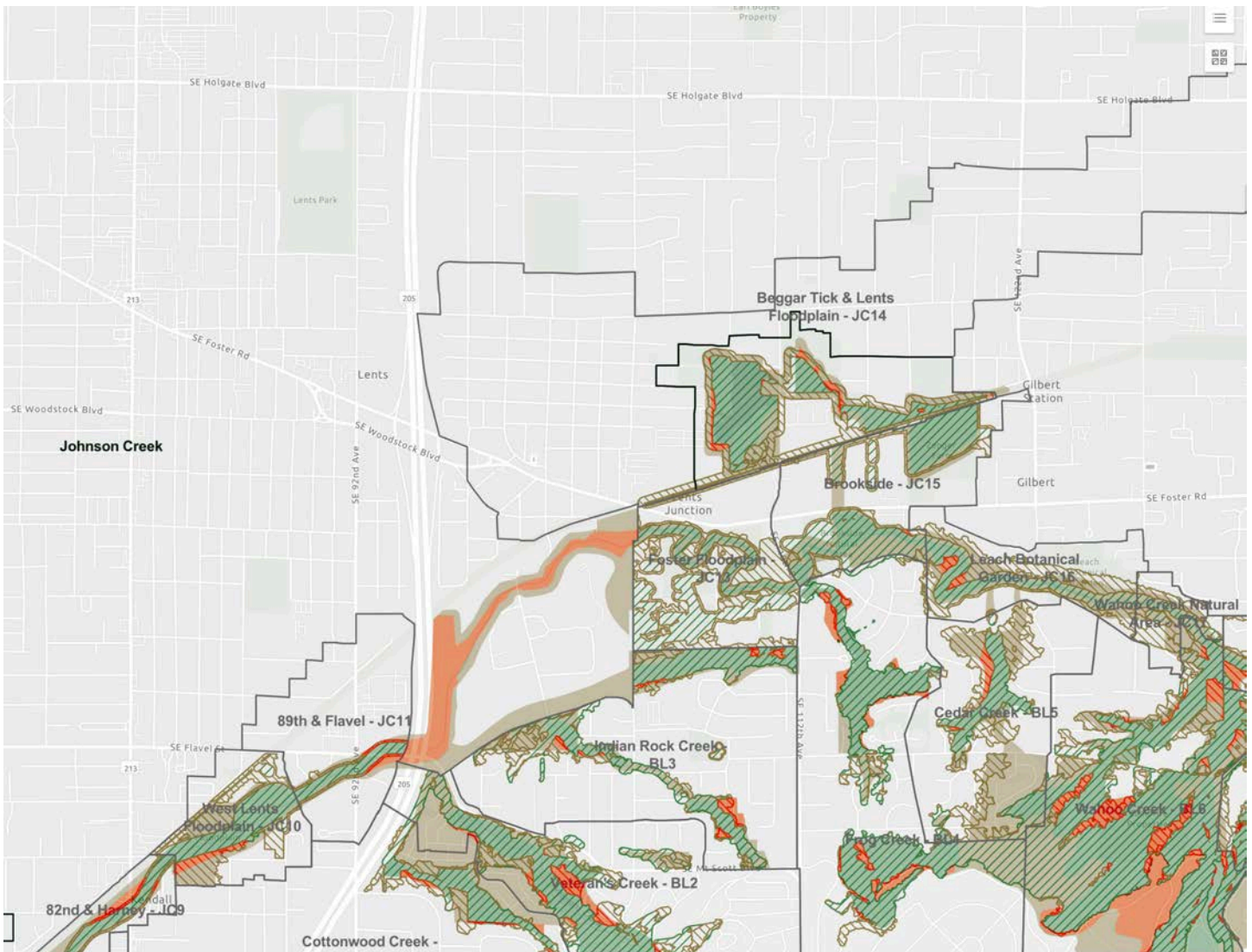
**PORTLAND
SOUTHEAST:**

- 82nd & Harney JC9
- West Lents Floodplain JC10
- 89th & Flavel JC11
- Veteran's Creek BL2
- Frog Creek BL4
- Indian Rock Creek BL3
- Cedar Creek BL5
- Wahoo Creek BL6

- Foster Floodplain JC13
- Beggar Tick & Lents Floodplain JC14
- Brookside JC15
- Leach Botanical Garden JC16
- Wahoo Creek Natural Area JC17

- Lents Neighborhood Assoc
- Pleasant Valley Neighborhood Assoc

Leach Botanical Garden



Protection zone "P" is the highest zone for protection
 Conservation zone "C" opens up for possible construction

- Green solid = current Protection "P" zone
- Brown solid = current Conservation "C" zone
- Green stripes = proposed Protection "P" zone
- Brown stripes = proposed Conservation "C" zone
- Green solid intersecting with Brown stripes (or red shown here) = "P" zones changing to "C" zones
- Green solid with no intersecting green stripes = "P" zone changing to no zone protection

To view interactive maps here:

<https://www.portland.gov/bps/ezones/ezones-map-app>

Click on "View the interactive map"

Enter property address

Click on upper right icon with three horizontal lines

Turn on "Existing Environmental Overlay" to see both current and proposed ezones