

COMMUNITY IS KEY



PCEF Grant Committee Meeting

March 17, 2022, 6:00 – 8:30 p.m.

— PORTLAND
**CLEAN ENERGY
COMMUNITY BENEFITS
FUND** —



Bureau of Planning and Sustainability

VISIT US ONLINE
portland.gov/bps/cleanenergy

Virtual Participation Check

Guidelines for public participation

- Committee meetings open to the public
- Public invited to comment at around 5:35 p.m.
- Opportunities for public engagement in other forums/meetings

➔ Guidelines applied to virtual meeting:



Chatbox: open for introductions and public comment. All other times, host-only chats (PCEF Staff).



Raise Hand: used by Committee only.



Video: on for Committee only.



Microphone: public members muted unless giving public comment or for introductions.



Recording: this meeting is being recorded.



Captioning: this meeting is being captioned; settings > show subtitles.

Guiding Principles



Introductions

Public comment

Agenda

- 6:00 Introductions
- 6:10 Public comment
- 6:15 Program update – recruitment and audit follow-up
- 6:55 BREAK
- 7:00 Breakouts with community
- 7:20 Continue discussion on audit follow-up
- 7:50 Mini grants program evaluation presentation
- 8:20 Committee member comments
- 8:30 Meeting close

Program updates

Break (20 minutes)

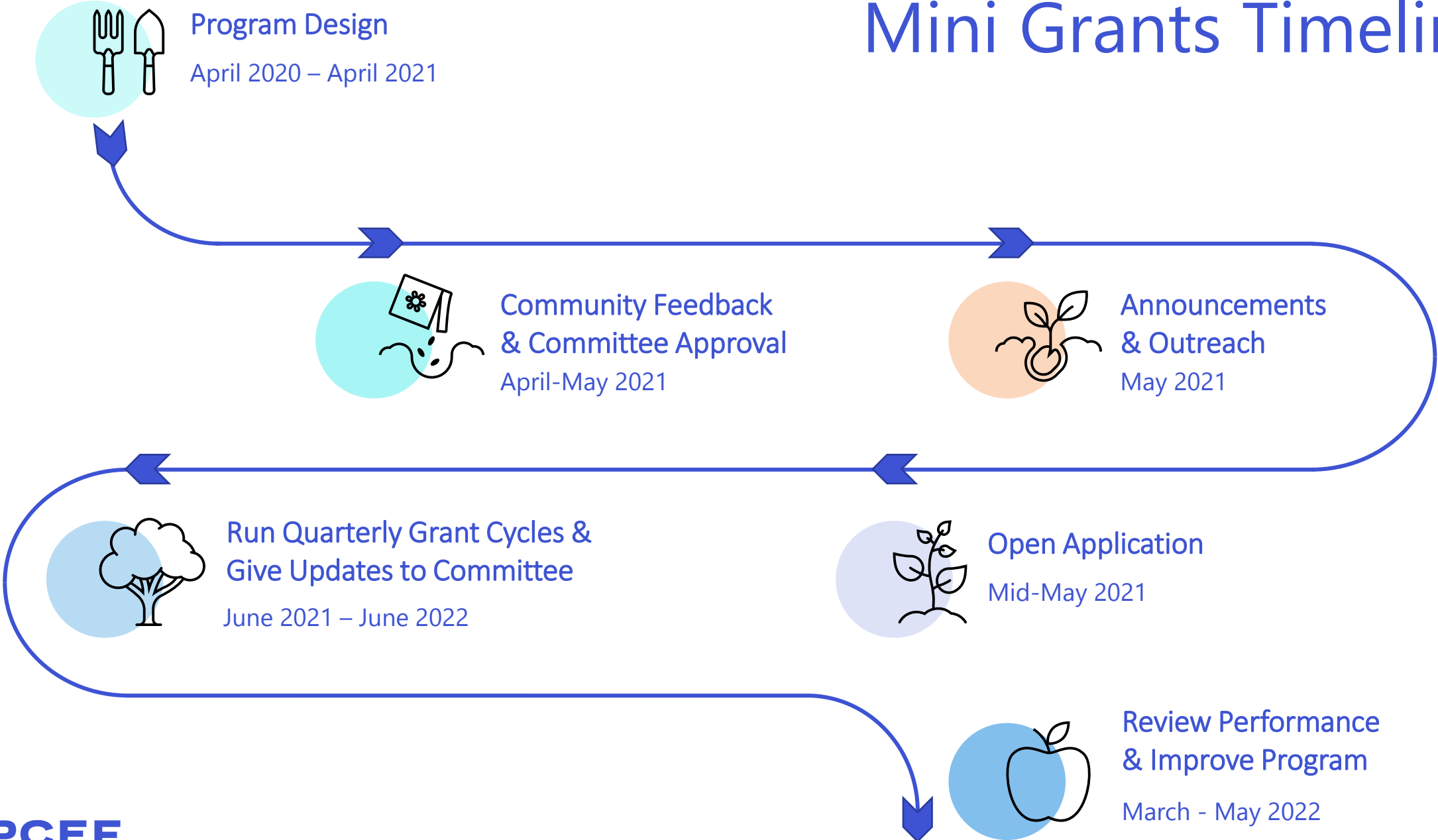
Members of the public joining via Zoom can participate in conversation with Committee members and each other in breakout rooms.

Mini grant program evaluation summary

Mini grants, Big impact

Angela Previdelli, Internal Systems and Mini Grant Project Manager

Mini Grants Timeline



Program Purpose & Overview

PCEF Mini Grants were created to ...

- Respond to small, time-sensitive funding needs
- Create on-ramp to PCEF
- Grow universe of nonprofits doing environmental justice work
- Provide low-barrier funding opportunity that prioritizes small, PCEF priority community reflective organizations

Year One: Program evaluation

Year Two: Grantee evaluation, goal setting, and process improvements



Program Purpose & Overview

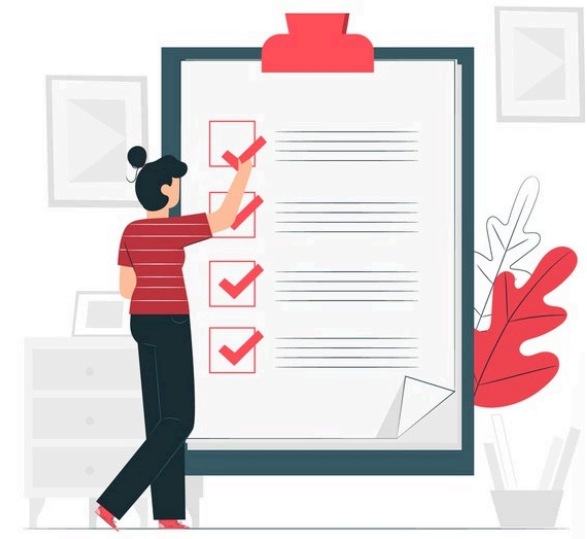
Committee approval details:

- First year will test demand and staff capacity.
- One year grant agreements, up to \$5,000 (limited by City Code)
- First level priority given to small organizations (3 or less FTE) that serve and are led by PCEF priority communities.
- At least two staff complete eligibility screening.
- Prioritized random selection only used if the requested amount is greater than the amount available. Addresses first-come, first-served bias and allows for timely selection process.
- Simple application and reporting to meet needs of small organizations and match \$5,000 funding level.
- Process evaluation after three quarters, full program evaluation after fifth quarter.

Council authorization

\$400,000 authorized FY 2021-2022

\$100,000 quarterly disbursement



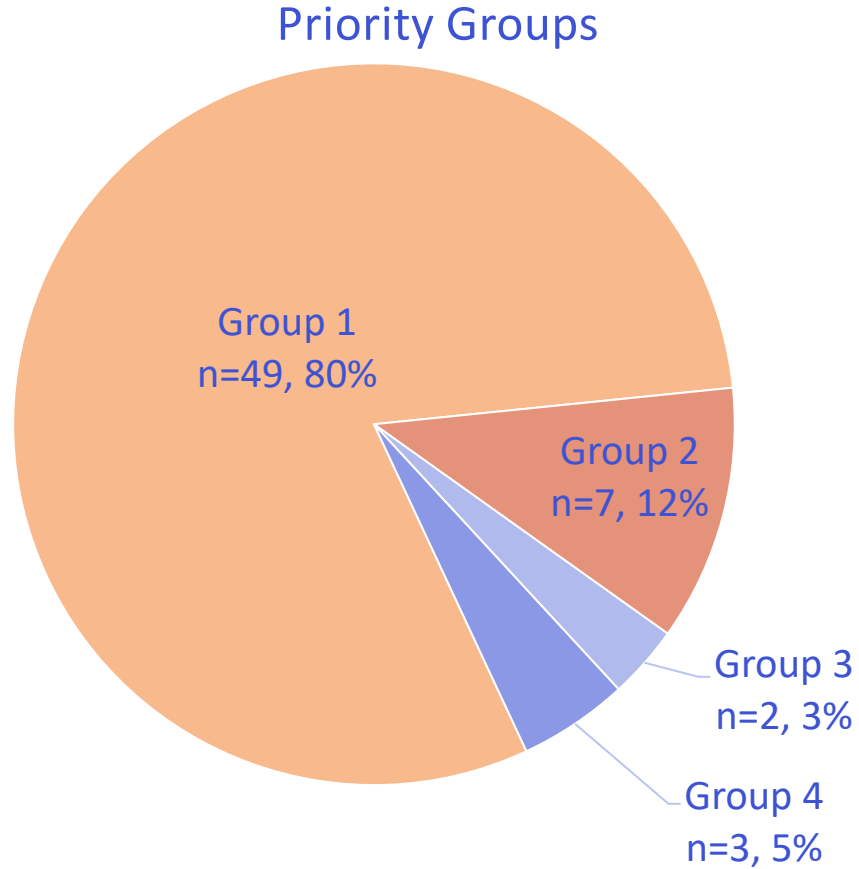
Evaluation Process

- Current process provides a program evaluation for the first three quarterly cycles – August 2021, October 2021, January 2022.
- The evaluation focuses on program design, reach, and initial results. The data focuses on information we can gather during the application and selection phases of the program.
- Grant terms are one year; therefore, this program evaluation is happening before any of the grants have completed their term.
- After the end of the one-year grant term staff will:
 - Survey grantees to capture their feedback/experience with the Mini Grant Program
 - Evaluate the results of the grantee's performance
 - Update program evaluation data



Current Results – Who?

**Cumulative data for all three cycles.*



Priority Group Definitions

Group 1: Majority reflective of priority communities, small (3 FTE or less)

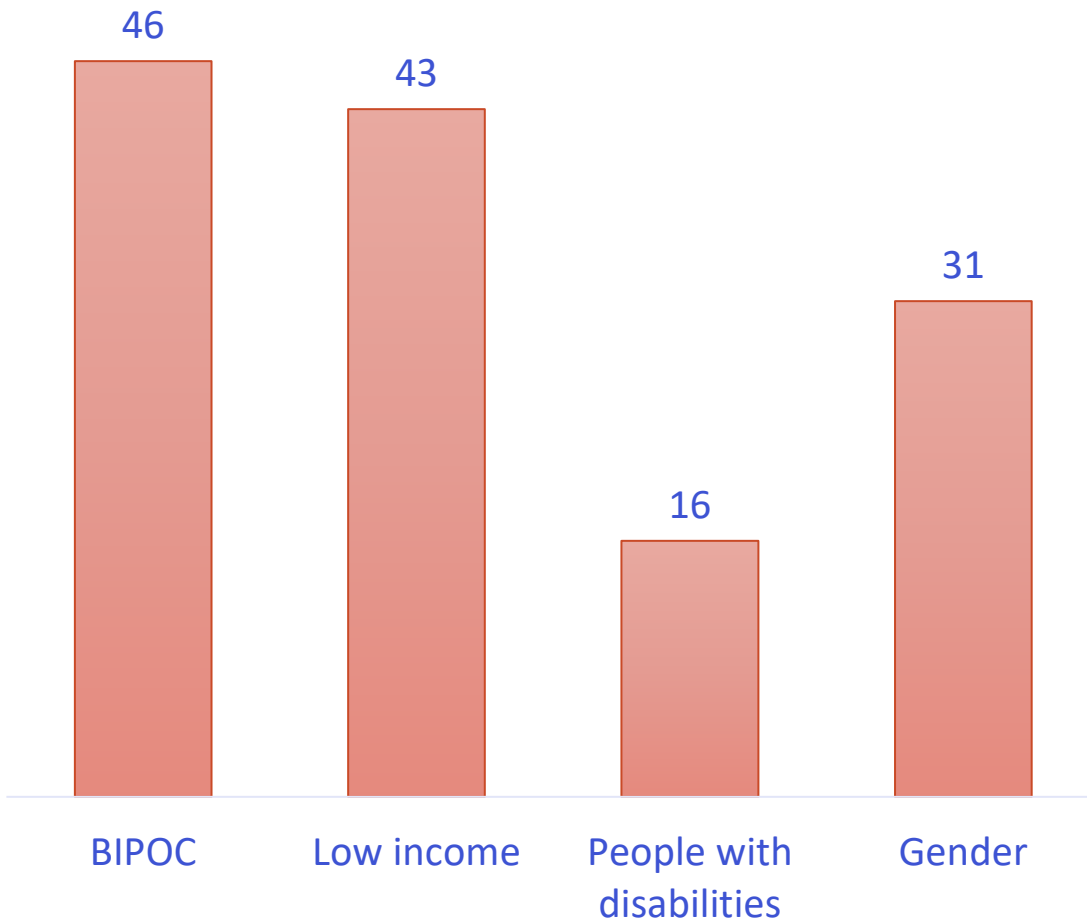
Group 2: Majority reflective of priority communities, not small (4 FTE or more)

Group 3: Not majority reflective of priority communities, small (3 FTE or less)

Group 4: Not majority reflective of priority communities, not small (4 FTE or more)

Current Results – Who?

PCEF Priority Communities



- *Questions ask if the organization primarily serves the community and if more than half of their board and staff also reflect that community. If the answer to both questions is yes, we consider that organization as serving and reflecting that PCEF priority community.*
- *Total grantees represented: 61.*
- *The chart above includes 43 responses to the original demographic questions and 18 responses to the new demographic questions.*
- *Values are not unique; grantees can be counted in multiple categories.*

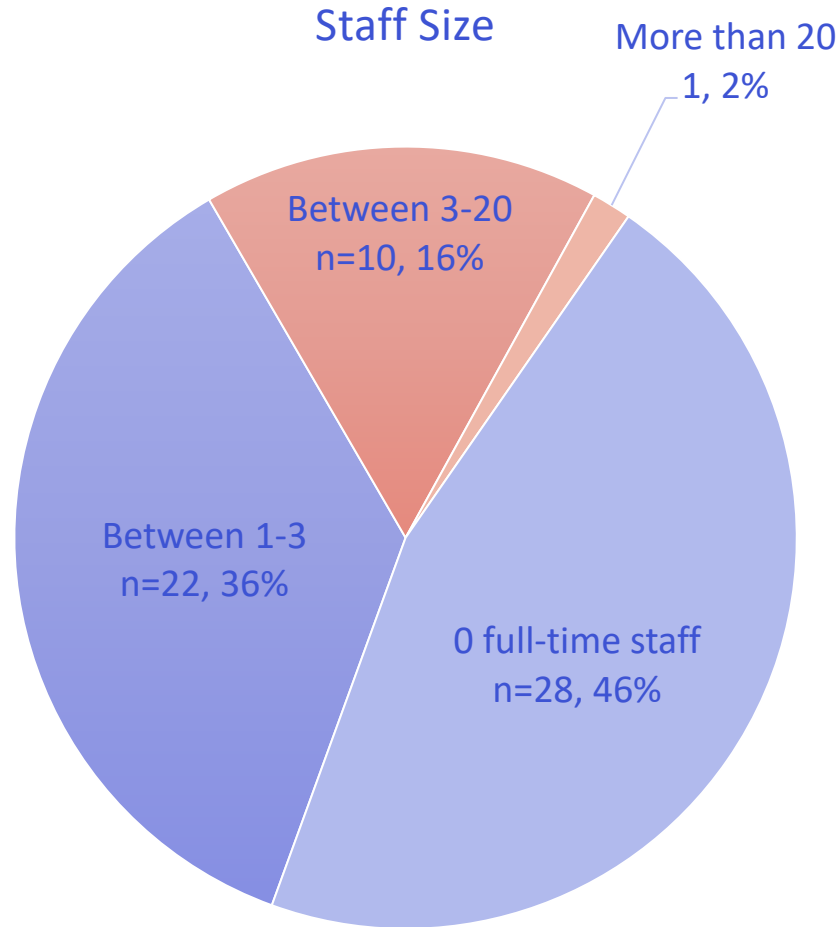


Current Results – Who?

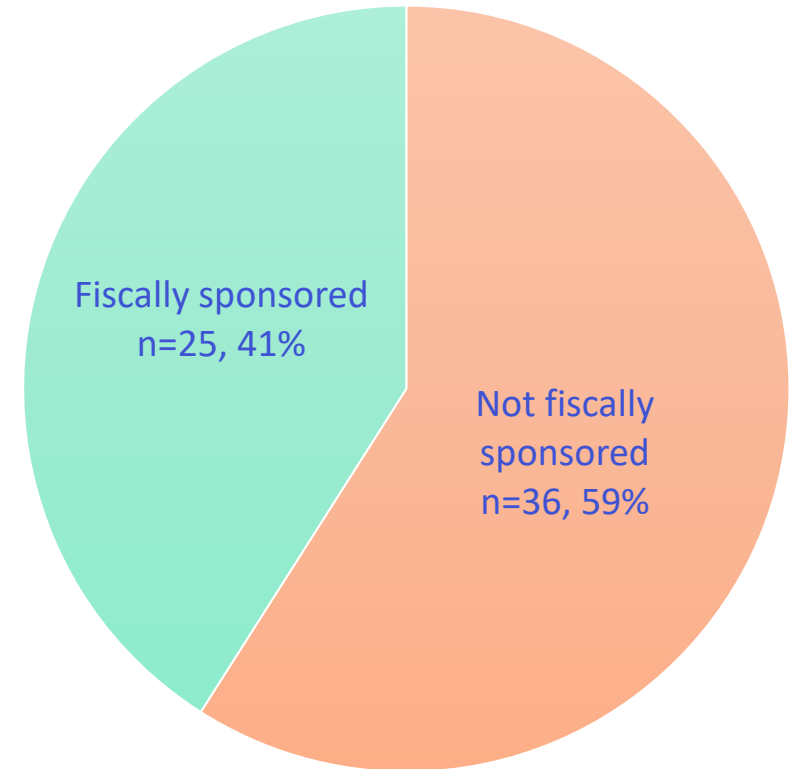
**Cumulative data for all three cycles.*

Staff Size

Mean:	2.8
Median:	1
Mode:	0
Largest staff size:	39
Smallest staff size:	0



Fiscal Sponsorship



Current Results – How much?

August 2021 Cycle

- Total applications: 85
- Total selected: 20
 - All selected from Group 1

October 2021 Cycle

- Total applications: 41
- Total selected: 20
 - 14 selected from Group 1
 - 6 selected from Group 2

January 2022 Cycle

- Total applications:
- Total selected: 21
 - 14 selected from Group 1
 - 2 selected from Group 2
 - 2 selected from Group 3
 - 3 selected from Group 4

August 2021 Cycle

	Group 1	Group 2	Group 3	Group 4	Total across all groups
Total Request	\$238,618.50	\$58,900	\$92,750	\$20,000	\$410,268.50
Total Funded	\$99,215	\$0	\$0	\$0	\$99,215

October 2021 Cycle

	Group 1	Group 2	Group 3	Group 4	Total across all groups
Total Request	\$124,600	\$28,500	\$55,000	\$14,995	\$223,095
Total Funded	\$70,000	\$28,500	\$0	\$0	\$98,500

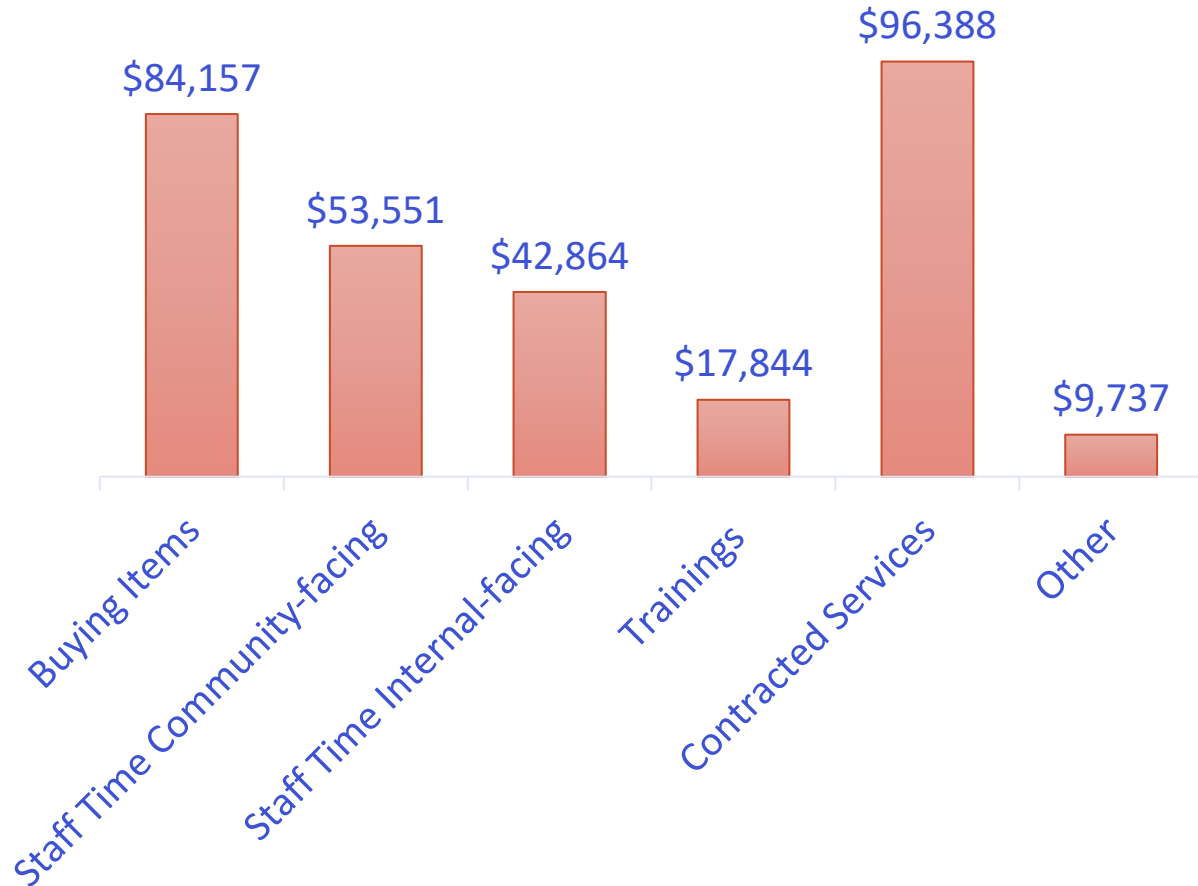
January 2022 Cycle

	Group 1	Group 2	Group 3	Group 4	Total across all groups
Total Request	\$88,372	\$10,000	\$9,750	\$14,521	\$122,643
Total Funded	\$68,372	\$10,000	\$9,750	\$14,521	\$102,643

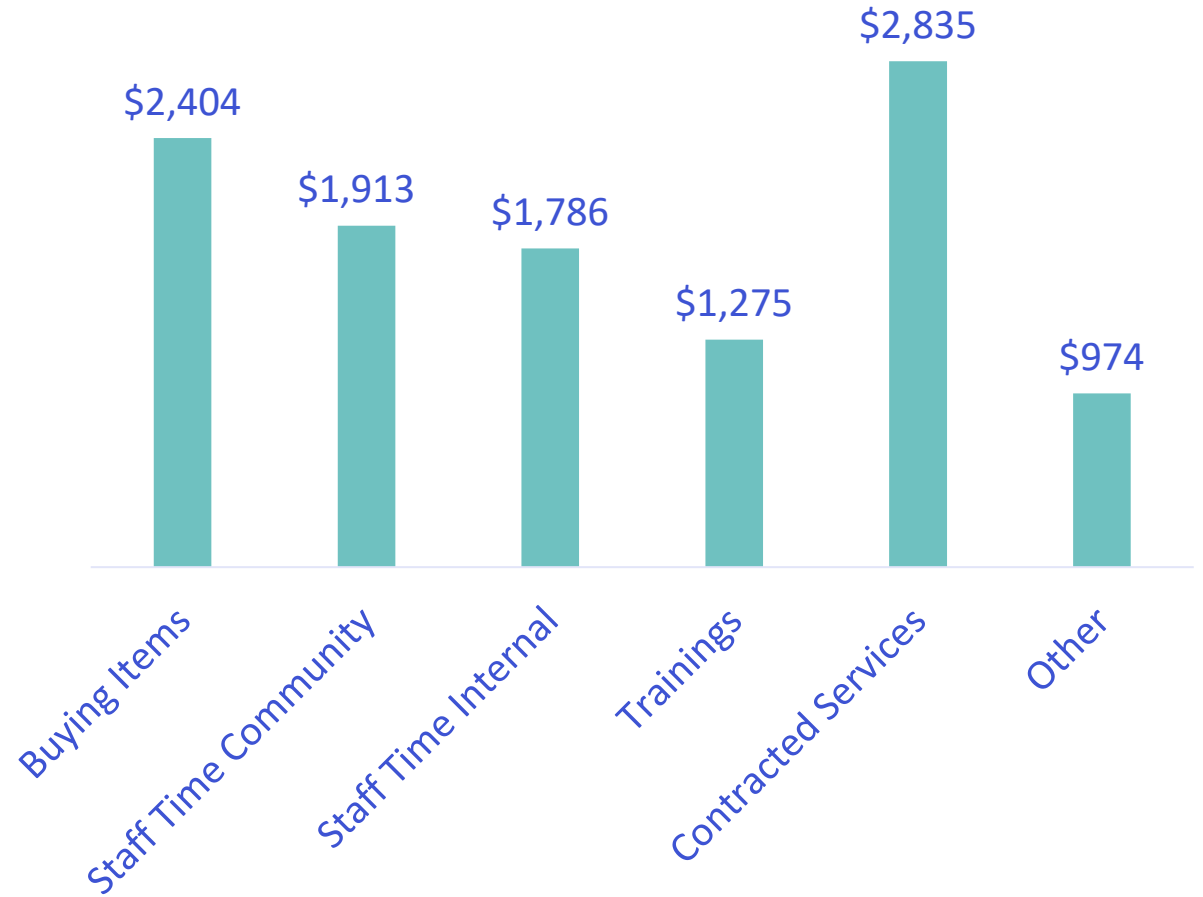
Current Results – What?

Grant Budget Line Items

Total Amount Requested



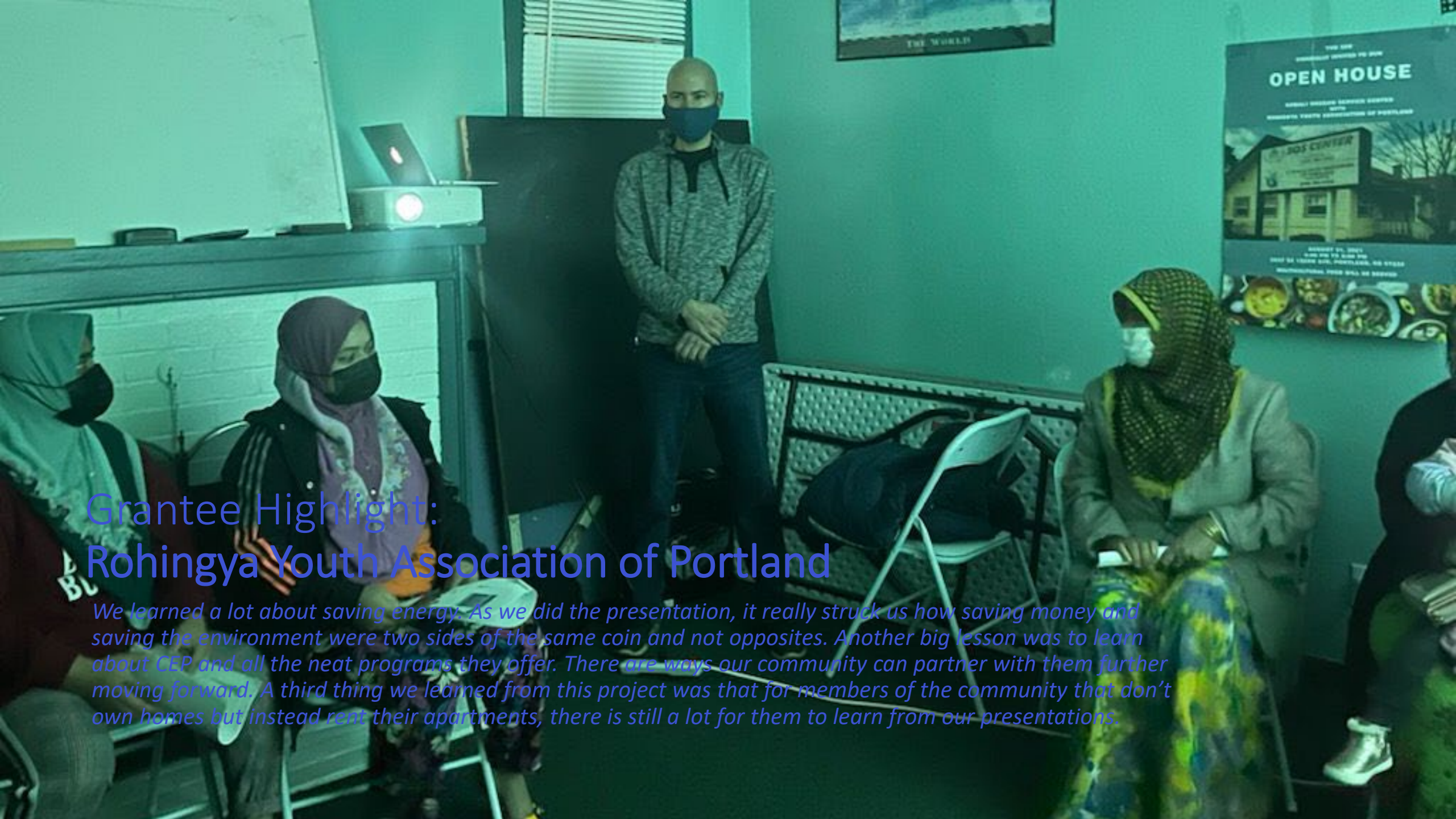
Average Dollar Amount Requested



**Cumulative data for all three cycles.*

Current Results – Examples

- “Support the Portland Youth Climate Collective and organize a second annual Portland Youth Climate Summit.”
- “...put together a mobile solar-powered setup for outdoor music and video educational events for BIPOC youth and young adults in Portland Oregon.”
- “The project will produce two video interviews of BIPOC individuals working in the green economy.”
- “We are currently building an "Anti-Oppression Medicinal and Food Perma-Garden" and gathering space for Argyle Gardens, a sustainable, low-income apartment community in North Portland.”
- “... assess our community understanding on environmental justice and their needs. This combines with our three-year strategic plan to develop youth leadership by attracting next generation leaders.”
- “... staff to attend trainings on climate change, resilience, action; Engage the Indigenous community to hear climate change impacts and their ideas for climate adaptation and actions; Gather an Advisory of Indigenous community members who have experience in Indigenous Traditional Ecological Knowledge and Western Bio/Ecology related to climate adaptation.”



Grantee Highlight: Rohingya Youth Association of Portland

We learned a lot about saving energy. As we did the presentation, it really struck us how saving money and saving the environment were two sides of the same coin and not opposites. Another big lesson was to learn about CEP and all the neat programs they offer. There are ways our community can partner with them further moving forward. A third thing we learned from this project was that for members of the community that don't own homes but instead rent their apartments, there is still a lot for them to learn from our presentations.

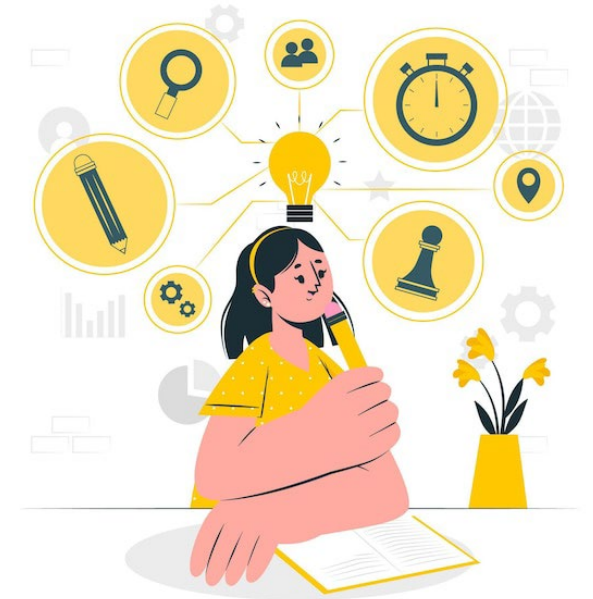
Observations & Conclusions

Observations:

- Mix in types of requests – most requests have been for small projects/activities, many also requesting grant writing support.
- Demand – Since the launch of the program, we've seen a decline in the number of applications. This could be related to both our level of outreach as well as a levelling off in interest from community groups.
- Staff capacity – staff capacity limits ability to provide one-on-one assistance to mini grant recipients.

Conclusions:

- Need focused outreach and communications to promote the program to priority communities throughout the year.
- Total annual allocation amount needs to be reduced to match demand for program and staff capacity.



Recommendations and Discussion

Program Recommendations:

- Staff will create outreach and communications plan to maintain and increase applications from PCEF priority communities.
- Allocate \$200,000 to Mini Grant Program for FY 2022-2023.

Discussion:

- Does the committee have any questions about these recommendations?
- Any additions or amendments to the recommendations?



COMMUNITY IS KEY



— PORTLAND —
**CLEAN ENERGY
COMMUNITY BENEFITS
FUND** —

Angela Previdelli
Internal Systems and Mini Grant Project
Manager



Bureau of Planning and Sustainability

A program by City of Portland,
Bureau of Planning and Sustainability
VISIT portland.gov/bps/cleanenergy

Committee member comments

COMMUNITY IS KEY



— PORTLAND —
**CLEAN ENERGY
COMMUNITY BENEFITS
FUND** —



Bureau of Planning and Sustainability

A program by City of Portland,
Bureau of Planning and Sustainability
VISIT portland.gov/bps/cleanenergy

Modified consensus decision making process

- **Proposal** – put forth for consideration by Committee member
- **Temperature check** – each Committee member indicates how comfortable they are with making an affirmative decision
- **Discussion** – additional discussion if needed
- **Amendments** – Committee members can offer amendments to the original proposal
- **Decision** – each Committee member can 1) affirm the proposal, 2) stand aside, or 3) indicate that “no” they do not support the proposal. Note that standing aside is counted as a decision to affirm for the purposes of approving a proposal.

The following minimum number of affirmative decisions is required for a decision to represent the position of the PCEF Committee.

- When 6 or 7 Committee members are present : 5 Affirmative decisions
- When 8 or 9 Committee members are present : 6 Affirmative decisions