

NE 47th Avenue Phase I Local Improvement District Final Assessment Hearing

March 2, 2022 - Agenda Item #147

WE KEEP PORTLAND MOVING.

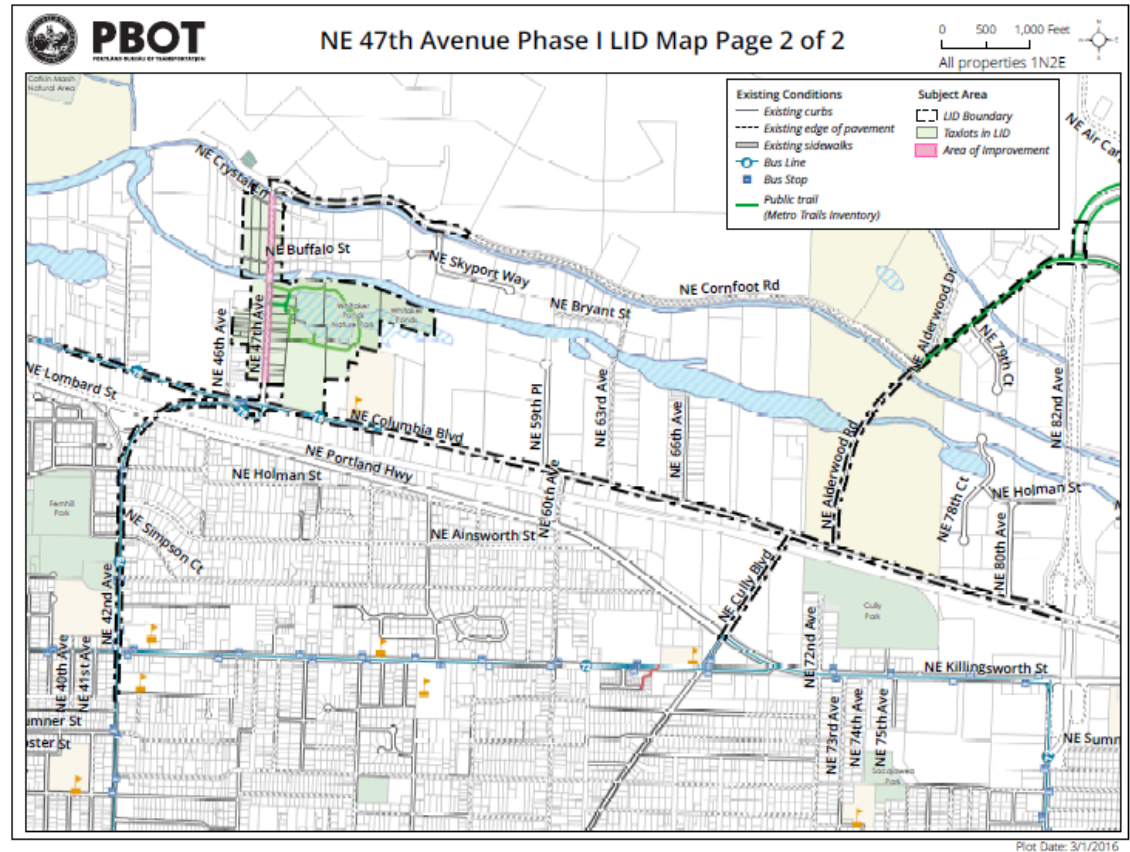
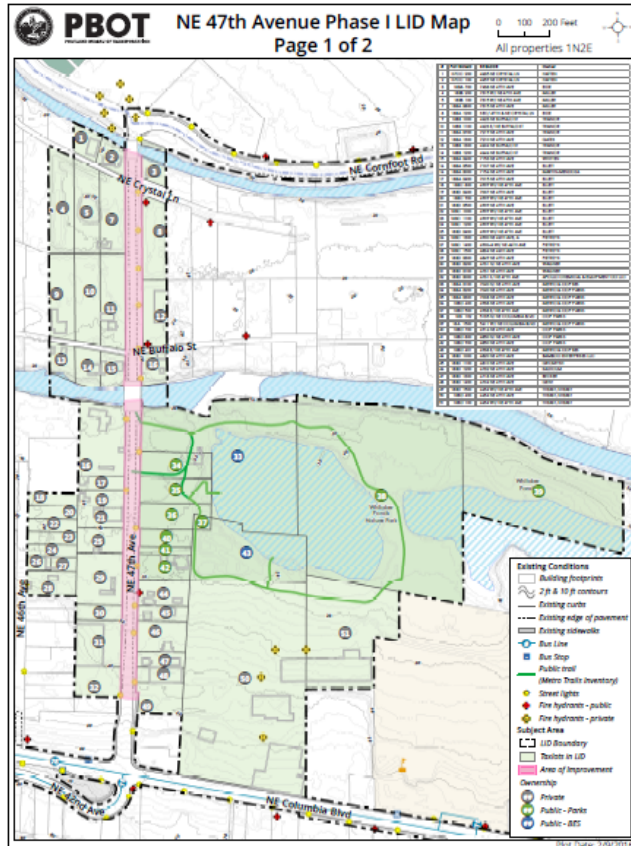


PBOT
PORTLAND BUREAU OF TRANSPORTATION

*Staff presenting: Andrew Aebi, M.B.A.; Local Improvement District Administrator
Jodie Inman, P.E., Chief Engineer; PWB; and Paul Suto, P.E., Chief Engineer, BES*

Map and Project Limits

North of Columbia Blvd. to South of Cornfoot Rd.



Portland Parks & Recreation

Whitaker Ponds Nature Park: First Partnership in LID



NE 47th Ave., Cully Blvd. & Prescott St.

Left: 2/01/10 Middle: 3/18/10 Right: 9/10/13



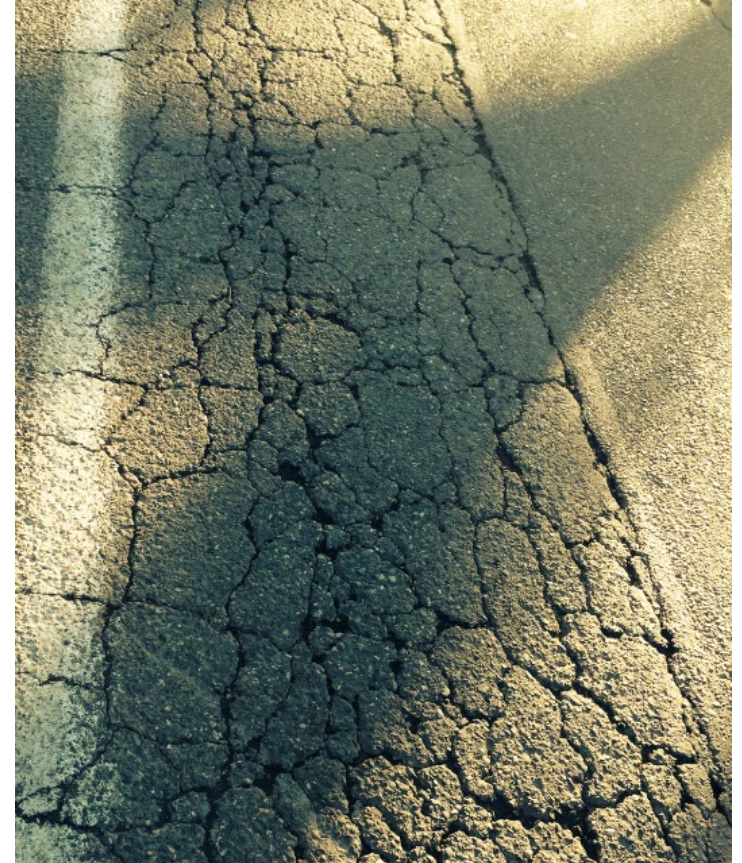
Portland Parks & Recreation

Whitaker Ponds Nature Park: Dedicated in May 2018



Pavement Condition as of 11/27/15

3 segments were worst 0.9%, 2.8%, 26.1% in City



Only one disruption and one detour

Reconstructed roadway, replaced water main, extended sanitary and stormwater sewers in single project



During construction on 8/21/20

Concrete roadway replaces failed asphalt



NE 47th Avenue Phase I LID

Coordinated New Multimodal Infrastructure

- 1) Fully reconstructed Priority Truck Street on Nat'l Hwy. System
- 2) Built temporary signal at NE Alderwood & Columbia for detour
- 3) Added sidewalks on both sides in lieu of walking on fog line
- 4) Added physically-separated bicycle facilities on both sides
- 5) Extended stormwater sewer
- 6) Added surface stormwater management facilities
- 7) Added dry line sanitary sewer, water main (subsequent to initiation of LID)
- 8) Added street lighting
- 9) Fully integrated with new Whitaker Ponds park improvements

Cully Association of Neighbors

Street Surface Types Versus Citywide (as of 6/30/21)

Paved With Curb:

54.2% of street centerline in Cully vs. 77.8% Citywide

30% less likely for a street in Cully than Citywide

Paved Without Curb (previously including NE 47th Avenue):

34.7% of street centerline in Cully vs. 16.9% Citywide

More than twice as likely for a street in Cully than Citywide

Unpaved:

9.1% of street centerline in Cully vs. 2.7% Citywide

More than three times more likely for a street in Cully than Citywide;
including NE Crystal Lane and NE Buffalo Street adjacent to NE 47th Avenue

Cully Association of Neighbors

Community Burdened by Inadequate Infrastructure

Single Mother:	297% of Citywide Average
African American:	239% of Citywide Average
Latino:	236% of Citywide Average
Family Households in Poverty:	236% of Citywide Average
Youth:	118% of Citywide Average
Household Size:	116% of Citywide Average

NE 47th Avenue Phase I LID

Financial Overview of Construction

\$ 497,000	Mobilization
\$ 489,000	Traffic Control Including Flagging
\$ 332,000	Pollution Control Plan & Contaminated Media
\$ 78,000	NE Alderwood & Columbia temporary traffic signal
\$1,396,000	Subtotal
\$4,778,000	Other construction costs (incl. full pavement rebuild)
\$6,175,000	Total Construction (2/3 of total project costs)
\$ 676,000	BES Sanitary Sewer Construction (48.4% of subtotal)
\$ 859,000	PWB Water Main Construction (61.5% of subtotal)