

working for clean rivers



## Citywide Sump Rehab & Replacement Project E11155

Brandon Wilson, P.E. | Engineering Supervisor | Bureau of Environmental Services  
Riley Walsh, EIT | Project Manager | Bureau of Environmental Services

December 8, 2021



ENVIRONMENTAL SERVICES  
CITY OF PORTLAND

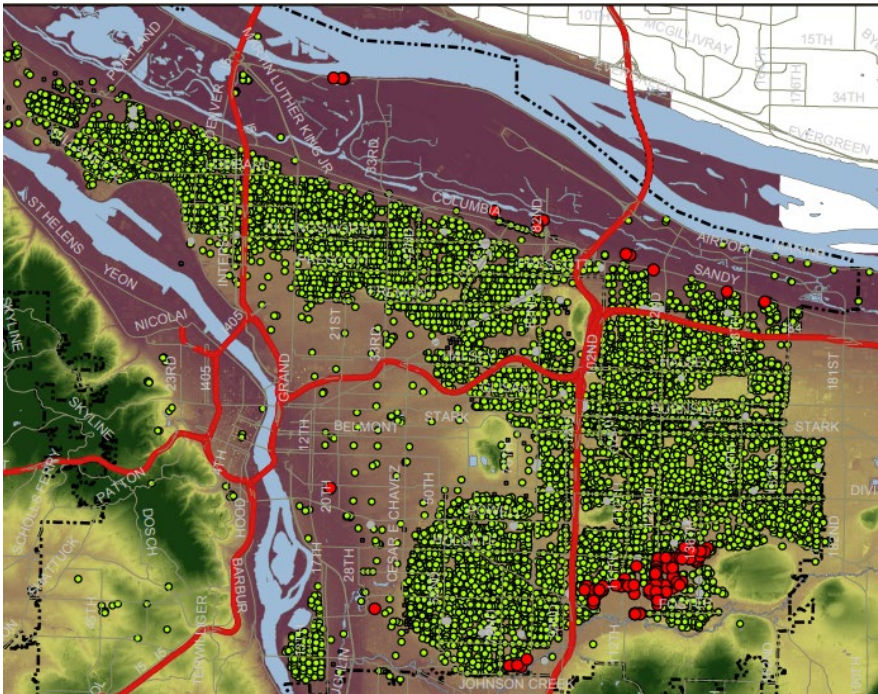
MINGUS MAPPS, COMMISSIONER  
MICHAEL JORDAN, DIRECTOR



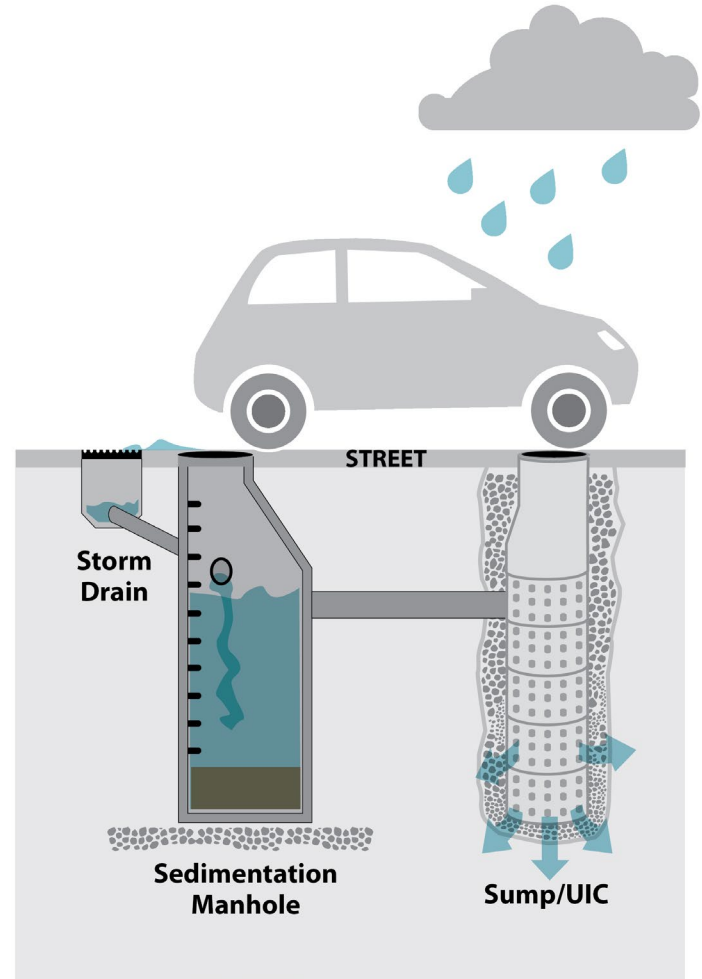
# Project Overview

## Citywide Sump Rehab & Replacement Project

- Installation of 28 sump systems at 14 different project locations



Map of Existing Sumps



Schematic of Sump System





# Construction Methods and Scope

- Open trench excavation and replacement of sumps
- Open trench excavation of inlets and inlet leads
- ADA ramp construction



Inlet Installation



ADA Ramp installation



# Public Outreach & Impacts

---

## Project Notifications

- Flyers, email updates, project webpage, Nextdoor, face to face
- 15 Neighborhoods and Business Districts scattered across North, Northeast, and Southeast Portland.
  - Neighborhoods and Business Districts include:
    - Overlook, Humboldt, King, Irvington, Parkrose Heights, Madison South, Russell, Montavilla, and Russellville.
    - Overlook Village, Montavilla, North/Northeast, Gateway Area, 82nd Ave, and Jade District.

## Inclusive Outreach

- Public Involvement (PI) staff has identified areas where Spanish, simple Chinese, and Vietnamese translations are needed. PI will be mindful of inclusive outreach and provide translations if the need arises around project sites to translate communication materials for affected community members.





# Engineer's Estimate & Schedule

---

## Engineer's Estimate:

- \$1,400,000
- High Confidence Level

## Advertise Project:

- April 2022

## Begin Construction:

- July 2022

## Construction Duration:

- 240 calendar days



Sump Installation



# Questions?

---

