

working for clean rivers



E11004 Carolina Trunk WZ 01/03 Rehabilitation Project Request for Exemption from Competitive Bidding

**Todd Martinez, P.E.
Project Manager**

**Yang Zhang, P.E.
Design Manager**



**Council Item#: 802
Date: November 10, 2021**



**ENVIRONMENTAL SERVICES
CITY OF PORTLAND**

Mingus Mapps, Commissioner
Michael Jordan, Director

PROJECT OVERVIEW

PROJECT LOCATION

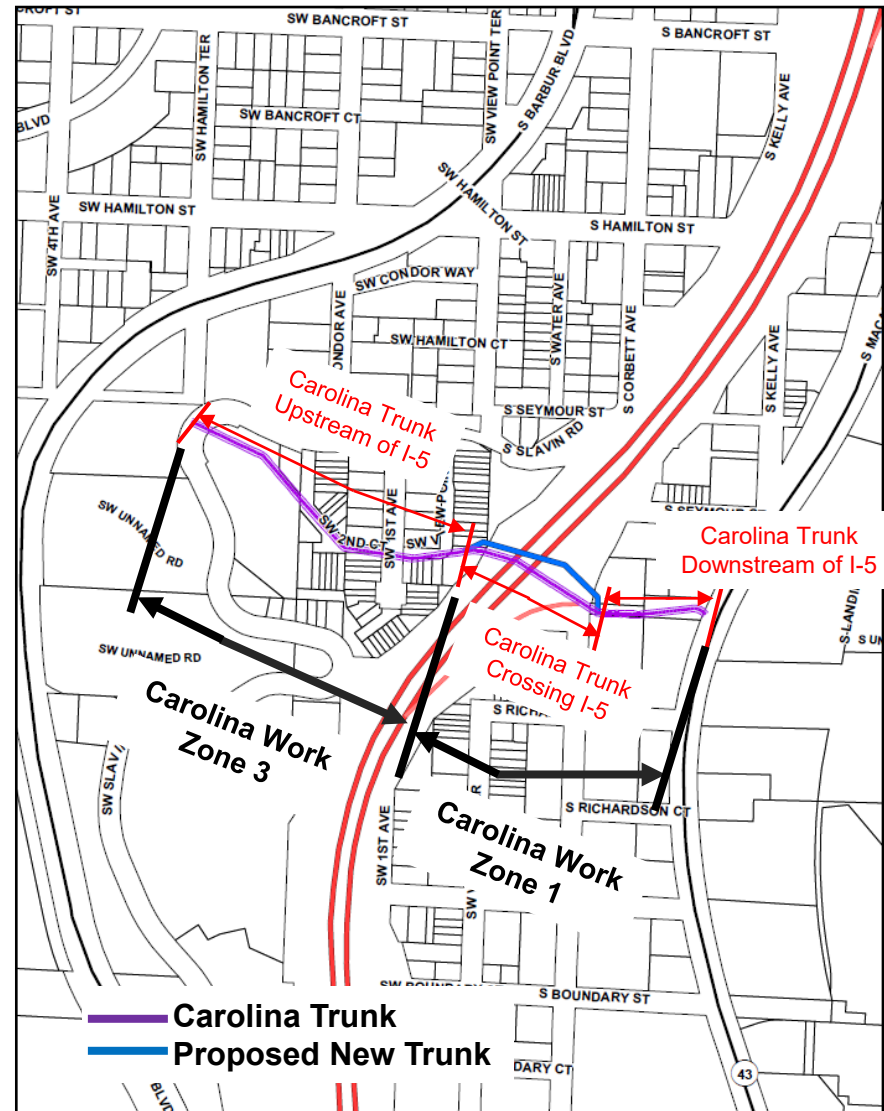
- SW Portland
- Crossing beneath highway I-5

CAROLINA TRUNK WZ 01/03

- Built in 1930s
- 42-in Horseshoe-shaped Concrete Pipe
- Approx. 1,600 ft long

PROJECT SCOPE

- Rehabilitate the existing trunk crossing I-5
- Install a new trunk crossing I-5 parallel to existing trunk
- Replace the existing downstream trunk
- Rehabilitate the existing upstream trunk
- Separate sanitary sewer and stormwater



PROJECT CHALLENGES

SOPHISTICATED FIELD AND SUBSURFACE CONDITIONS

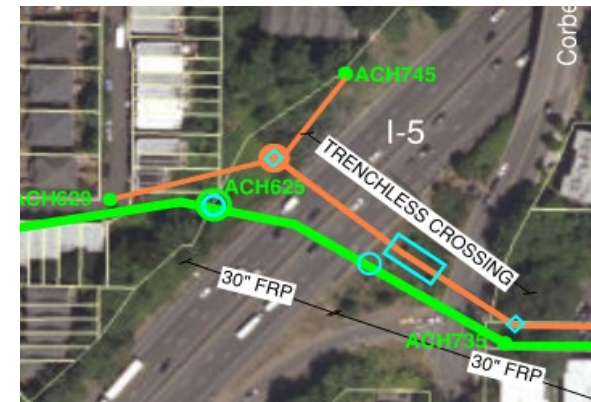
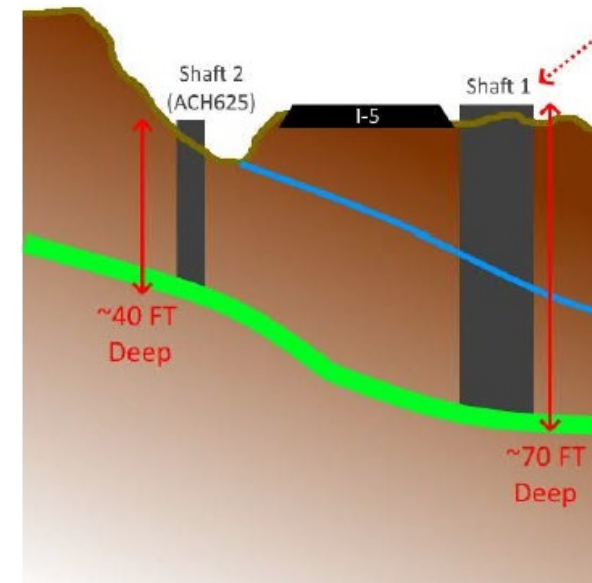
- Deep shaft excavation with high groundwater
- Trenchless large utility construction crossing a major highway
- Work in environmental zone, on private properties and in proximity to a major highway,

CONSTRUCTION CONSTRAINTS

- Limited construction access
- Tight construction space
- Complex sewer flow bypass coordination
- Complex traffic control on busy streets and highway

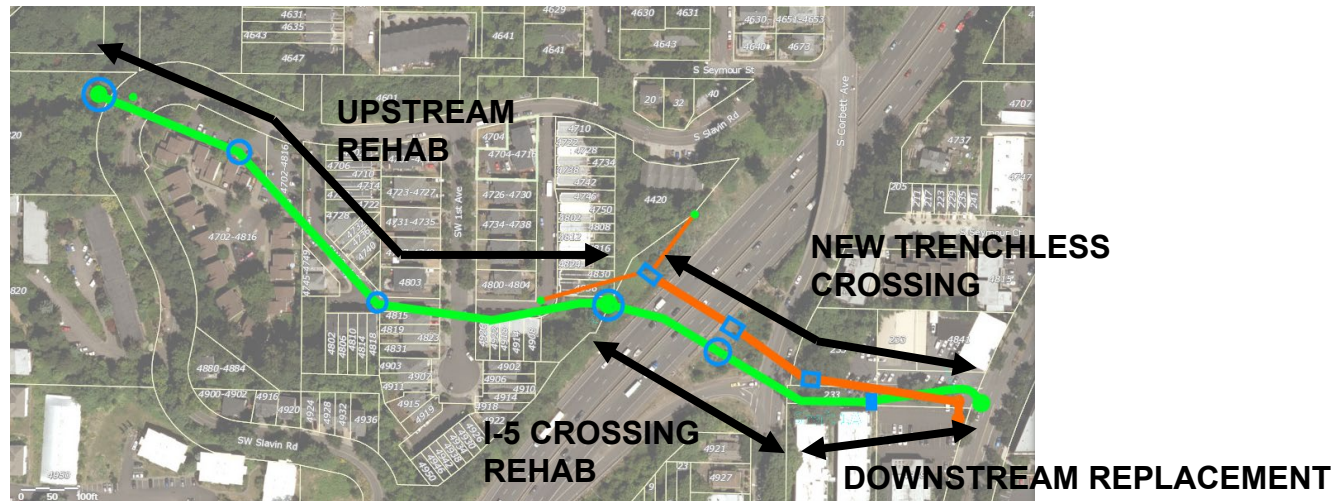
STAKEHOLDERS AND PUBLIC INVOLVEMENT

- ODOT and PBOT ROW
- Other public agencies
- Construction easements on private properties
- Night work and traffic control impact



ALTERNATIVE DELIVERY SEQUENCING

Approach	Phase 1	Phase 2
CM/GC (Single Procurement)	<ul style="list-style-type: none"> • New Trenchless Crossing • I-5 Crossing Rehab • Downstream replacement 	<ul style="list-style-type: none"> • All other elements



PROJECT COSTS & SCHEDULE

Approach	Construction	Total Project
<i>CM/GC Delivery</i>	<i>Approx. \$20 M *</i>	<i>Approx. \$30 M</i>

** Class 5 ranges (-20% lower to +50% higher) not shown*

	Start Design	Procurement (GMP) *	Final Design	Start Construction	End Construction
<i>CM/GC</i>	<i>DEC 2021</i>	<i>NOV 2023</i>	<i>JAN 2024</i>	<i>NOV 2023</i>	<i>DEC 2024</i>

** Guaranteed Maximum Price (GMP) will be prepared by GC based on 90% design*



Construction Manager/General Contractor (CM/GC)

Early Contractor involvement:

- Schedule efficiencies
- Value engineering
- Reduce construction uncertainties and risks
- Implement a Community Equity and Involvement Plan
 - Committee Oversight and Reporting
 - Workforce Goals:
 - Apprenticeship – 22% M, 9% W
 - Journey-level – 22% M, 6% W
 - Subcontracting Goals
 - COBID Certified Firms – 22% overall, 12% M/D, 5% W



Recommendation

- Accept the factual findings
- Authorize an exemption from competitive “low-bid” procurement



Questions?

