

# SE HAWTHORNE SPECIAL BUILDINGS (Including Historic HRI Listed Properties)

Date: 11/7/18	MOLINARO		KEY:	On HRI Map	National Landmark not on HRI	Should be considered for HRI status
PROPERTIES	ADDRESS	YEAR BUILT	HRI RANK	USE	STYLE	U.R.M
Howard Cooper Company Building	307 SE Hawthorne Boulevard	1922	III	Warehouse		
				Features Industrial windows. Deco arch relief at main entrance 3 stories Reinforced Concrete Utilitarian	Reinforced Concrete Utilitarian	
615 SE HAWTHORNE		1926	N/A			
				Features Flat roof with irregular parapet. Decorative medallions Recessed angle entry Substantial remodelings to storefront might deny eligibility Streetcar era commercial	Streetcar era commercial	
626 SE HAWTHORNE		1923	N/A			
				Features Flat roof with irregular parapet. Multi light clearstory. One story Decorative relief work at parapet Streetcar era commercial	Streetcar era commercial	
710 SE MADISON		1920	N/A			
				Features Flat roof with symmetrical triangular parapet. Substantial remodelings to storefront might deny eligibility Streetcar era commercial. One story Maybe does not belong on list	Streetcar era commercial	
700 SE HAWTHORNE		1926	N/A			
				Streetcar era commercial Decorative parapet finials Klinker brick in random pattern one story replacement storefront true to established patterns	Streetcar era	
Red Men Hall	900 SE Hawthorne Boulevard	1923	III	Lodge Hall, Retail		
Beaver Building				Features Flat roof with irregular parapet. Projecting window hood. First level storefront, multi-light clearstory window Recessed Entry Mission Style, Streetcar era commercial 2 story	Streetcar Era Commercial	
901 SE HAWTHORNE		1924	N/A			
				Multi light clearstory, clearly defined signage band above Recessed angles entries, one story Raised sill Chamfered entry at corner Streetcar Era Commercial Patterns typical of SE Hawthorne	Streetcar Era Commercial	X
1312 SE HAWTHORNE		1926	N/A			
				Recessed angles entries, one story Features Flat roof with regular parapet expressions Wraps corner with storefront Deco detailing at parapet Streetcar Era Commercial	Streetcar Era	

# SE HAWTHORNE SPECIAL BUILDINGS (Including Historic HRI Listed Properties)

Date: 11/7/18	MOLINARO		KEY:	On HRI Map	National Landmark not on HRI	Should be considered for HRI status
PROPERTIES	ADDRESS	YEAR BUILT	HRI RANK	USE	STYLE	U.R.M
1426 SE HAWTHORNE 1940 N/A						
				Large canopy overhang	Art Deco	
				Articulated parapet with deco influences		
				Large signage area		
				Artr Deco one story		
Valencia Court Apartments 1430 SE Fourteenth Ave 1928 III Apartments						
				cast stone belt line	Streetcar era	
				First floor stucco, second and third floors combed brick.		
				Recessed panels between pavillions have tall round-arched multi paned windows and wrought iron balcony railings. Pedimented courtyard entrance façade with Tudor cast stone. Doorway surrounds.		
				3 story streetcar era apartments with mixed use ist floor commercial		
ABERDEEN CONDOS 1531 SE HAWTHORNE ? N/A Condo						
				Heavy cast lintels with decorative keystone	Jacobethan	
				Scroll pediment over large bay windows		
				Base, middle, top		
				Jacobethan		
				3 stories		
Emil Pittelkan Residence 1540 SE Hawthorne Boulevard 1913 III Residence						
				Features Gable roof with main facade entrance and intersecting center gable	Prairie Style	
				Fluted pilasters articulate stepped out central portion of front façade.		
				First floor of horizontal siding, second floor stucco. Banded windows		
				Prairie Style 2 stories		
1634 SE HAWTHORNE 1927 N/A						
				Unusual klinker brick	Brick Utilitarian	X
				Art nouveau entry expression	Arts and	
				Multi light double hung windows		
				Overhanging roofline 3 stories		
				Arts and craft/prairie		
1650 SE HAWTHORNE 1924 N/A						
				Mission raised parapets	Courtyard	
				symmetrical windows, overhanging tile awnings, rounded entry gateway	California Mission	
				decorative medallions at windows		
				2 story Courtyard Apartment		
				California Mission		
1701 SE HAWTHORNE 1925						
				maybe not on list storefronts drastically altered	Streetcar era commercial?	
				decorative parapet with medallions		
				angled entrances		
				one story		



# SE HAWTHORNE SPECIAL BUILDINGS (Including Historic HRI Listed Properties)

Date: 11/7/18	MOLINARO		KEY:	On HRI Map	National Landmark not on HRI	Should be considered for HRI status
PROPERTIES	ADDRESS	YEAR BUILT	HRI RANK	USE	STYLE	U.R.M
Joseph Simon, original owner	1736 SE Hawthorne Boulevard	1929	III	Retail		
				Features Flat roof with irregular parapet. Exterior of reinforced concrete.	Zig-zag Moderne	
				Corner entrance with round arched opening		
				Zig-zag Moderne		
				one story		
1809 SE HAWTHORNE		1924				
				symmetrical window pattern	Brick Utilitarian	X
				base middle top		
				decorative belt line at parapet		
				2 stories		
1831 SE HAWTHORNE		1924				
				symmetrical window pattern	Brick Utilitarian	
				base middle top		
				decorative belt line at parapet		
				2 stories		
Seeds	1844 1864 SE Hawthorne	1927	III	Retail		
				Brick front with stepped false gables.	Streetcar era	
				Storefronts with multi-light transoms. Recessed angled entrys		
				Raised brick sills. One story		
				Streetcar era commercial		
1939 SE HAWTHORNE		1926				
				angled entrances at storefront		
				corner tower		
				one story		
				streetcar era commercial		
Fox and Co.	1960 SE Hawthorne Boulevard	1927	III	Apartment House, Retail		
				Features Unusual triangular shape plan. Flat roof with finials. Exterior of stucco	Streetcar Era Commercial	
				Quoining and decorative band at roofline	Deco influences	
				Two stories		
				Streetcar Era Commercial		
Santa Barbara Apartments	2052 SE Hawthorne Boulevard	1928	III	Apartments		
			Landmark	Features Flat roof with irregular parapet, tile coping and mock bell tower	Streetcar Era Apartments	X partial upgrade
				3 story. Ovoid medallions of the face and cast finials on the parapet.		
				Streetcar Era Apartments		

# SE HAWTHORNE SPECIAL BUILDINGS (Including Historic HRI Listed Properties)

Date: 11/7/18	MOLINARO		KEY:	On HRI Map	National Landmark not on HRI	Should be considered for HRI status
PROPERTIES	ADDRESS	YEAR BUILT	HRI RANK	USE	STYLE	U.R.M
2128 SE HAWTHORNE 1928						
				Streetcar Era Apartments	Streetcar Era	
				4 stories		
				maybe not on list		
2211 SE HAWTHORNE 1926						
				ACTUALLY 1431 SE 23RD AVE		
Headley Pharmacy 2230 SE Hawthorne Boulevard 1947 Retail						
				Features Flat roof. Exterior of reinforced concrete with recessed glass-façade	Fifties Modern	
				One story		
				Why is this on the list?		
2323 SE Hawthorne Boulevard 1926 Residence						
				Features Flat roof with raised parapet at corners.	Historic Worker cottages	
				Open porch with shed roof side stairs		
				example of cottage cluster		
Dahlin Dental Lab 2532 SE Hawthorne Boulevard 1974 III Office						
				Features Flat roof. Glass curtain walls. Parking area under building.	International Style	
				International Style		
Holman's Funeral 2610 SE Hawthorne Boulevard 1902 Landmark Residence						
				Features Low-pitched hip roof with wide overhanging eaves and exposed rafters	Italianate	
Walter Burrell orig owner				Stucco exterior. Loggia with tuscan columns. Bay windows. Brick chimney and piers		
				Italianate		
San Farlando Apartments 2903 2925 SE Hawthorne 1929 Landmark Multiple Dwelling						
				Features low clad hip roof and minor brick relief elements. Corbelled brick diamond spandrels.	Minimal Traditional	
				Minimal Traditional		
2904 SE Hawthorne Boulevard 1928 III Apartment House						
				Features Multi-gable roof. Upper story weatherboard siding. Lower story	English Cottage	
				English Cottage		
				Maybe should not be on the list?		



# SE HAWTHORNE SPECIAL BUILDINGS (Including Historic HRI Listed Properties)

Date: 11/7/18	MOLINARO		KEY:	On HRI Map	National Landmark not on HRI	Should be considered for HRI status
PROPERTIES	ADDRESS	YEAR BUILT	HRI RANK	USE	STYLE	U.R.M
	3031 SE HAWTHORNE	1909				
				Adaptive reuse of large residence into multi family hostel	Craftsman vernacular	
	3202 SE Hawthorne Boulevard	1925				
				Features Flat roof. Projecting cornice. Symmetrical elevation with belt course Streetcar Era Commercial	Streetcar Era Commercial	
William Jones	3257 SE Hawthorne Boulevard	ca. 1892	III	Residence		
Tarboush resturant				Features Pedimented window in ground-floor bay with sunburst ornament, brackets and pendants. Belt course of patterned shingles forming ballustrade of 2nd story porch. Eyelid attic dormer. Povey brothers stained glass Queen Anne Vernacular	Queen Anne Vernacular	
	3268 SE HAWTHORNE	1915				
					Prairie	
	3279 SE Hawthorne Boulevard	ca. 1907	III	Residence		
				Features Rock-faced ashlar with rusticated quoins. Shingled, shed-roofed dormer on south elevation. Exposed rafters. Bungalow adapted as restaurent, retail and barber shop	Bungalow	X
	3334 SE HAWTHORNE	1928				
				Klinker brick Symmetrical windows Accentuated arched entry	Prairie	
	3500 SE HAWTHORNE	1923				
				One story brick regular pattern of recessed entry Multi pane clearstory		X

# SE HAWTHORNE SPECIAL BUILDINGS (Including Historic HRI Listed Properties)

Date: 11/7/18

MOLINARO

KEY:

On HRI Map

National Landmark not on HRI

Should be considered for HRI status

PROPERTIES

ADDRESS

YEAR BUILT

HRI RANK

USE

STYLE

U.R.M

3522 SE HAWTHORNE

1905



Douglas Building

3525 3541 SE Hawthorne

1929

Landmark

Commercial



Middle inset front entrance surrounded with sunburst pattern brick work.

Twentieth Century Architecture

2 stories. Recessed entries. Pilasters of raised brick every 8th course set back. Small concrete capitals.

Automobile era commercial

Twentieth Century Architecture

Automobile era commercial

Sensel, Henry Building

3556 3568 SE Hawthorne

1909

Landmark

Commercial



Projecting 2nd floor bay windows, high transom windows.

Italianate

Deep eaves with scroll-cut mock rafters. Cornerboards.

Italianate

3610 SE Hawthorne Boulevard

1928

Retail



Features Flat roof with sloped tile coping. Tile, hipped-roof pavilion wi

Streetcar Era Commercial, Mediterranean

Streetcar Era Commercial, Mediterranean

X

Theater

3632 SE Hawthorne

1911

Landmark

Multi Dwelling



Historic movie house, no features remaining

Twentieth Century Classical

X

3701 3719 SE HAWTHORNE

1911



X



# SE HAWTHORNE SPECIAL BUILDINGS (Including Historic HRI Listed Properties)

Date: 11/7/18

MOLINARO

KEY:

On HRI Map

National Landmark not on HRI

Should be considered for HRI status

PROPERTIES

ADDRESS

YEAR BUILT

HRI RANK

USE

STYLE

U.R.M

Bagdad Theater

3702 SE Hawthorne Boulevard

1927

III

Theater



Features Reinforced concrete structure with stucco exterior finish. Red c

Mediterranean

Sunnyside Masonic Temple

3862 SE Hawthorne Boulevard

1919

III

Lodge



Features Flat roof. Roman Doric wooden columns with brick bases in coloss

Twentieth Century Classical

X partial upgrade

4025 SE Hawthorne Boulevard

1925

III

Apartment House



Features Bracketed cornice with dentil frieze. Low hip roof with dormer.

Streetcar Era Apartments

X

4134 SE Hawthorne Boulevard

1907

Residence

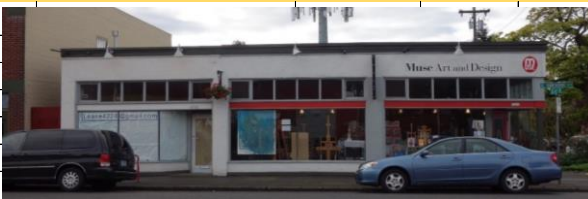


Features Gable roof with wide eaves, bargeboards, exposed rafters and brackets

Bungalow

4220 SE HAWTHORNE

1924



4230 SE HAWTHORNE

1926



X

# SE HAWTHORNE SPECIAL BUILDINGS (Including Historic HRI Listed Properties)

Date: 11/7/18	MOLINARO		KEY:	On HRI Map	National Landmark not on HRI	Should be considered for HRI status
PROPERTIES	ADDRESS	YEAR BUILT	HRI RANK	USE	STYLE	U.R.M
	4431 SE Hawthorne Boulevard	ca. 1905		Apartment House		
				Features Two-story pillared porch partially enclosed at second story. Multifamily units	Streetcar Era Apartments	
	4609 SE HAWTHORNE	1913				
				2nd tier		X
Market Building	4604 SE Hawthorne Boulevard	1934		Retail		
				Features Flat parapeted roof with zigzag molding. Vertical projecting pie shaped moulding	Zig-zag Moderne	X
	5000 SE HAWTHORNE	1907				
				Two -story mixed use building Houses Sapphire lounge which was a historic brothel	Main street	
	5112 SE HAWTHORNE	1895	III	RESIDENCE		
				POLYGONAL BAY WINDOW DECORATIVE BRACKETS	QUEEN ANNE VERNACULAR	
BUEHNER HOUSE/WESTERN SEMINARY	5511 SE HAWTHORNE	1906	LANDMARK	SEMINARY		
				2-1/2 STORIES GREEK CORINTHIAN FLUTED COLUMNS CORNICE MEDALLIONS PORTE-COCHERE COLONIAL REVIVAL	COLONIAL REVIVAL	
	5603 SE HAWTHORNE	1895	III	RESIDENCE		
				PROJECTING GABLE OVER POLYGONAL WINDOW PATTERNED SHINGLES PORTHOLE WINDOW	QUEEN ANNE REVIVAL	
	5638 SE HAWTHORNE	1920	111	RESIDENCE		
				FLAT ROOF BRACKETED CORNICE MASSIVE BATTERED PIERS SMOOTH STUCCO	CALIFORNIA MISSION	