



# ***Willamette River Greenway Inventory: An Update to Portland's Statewide Planning Goal 15 Inventory***

***Planning & Sustainability Commission  
March 26, 2019***



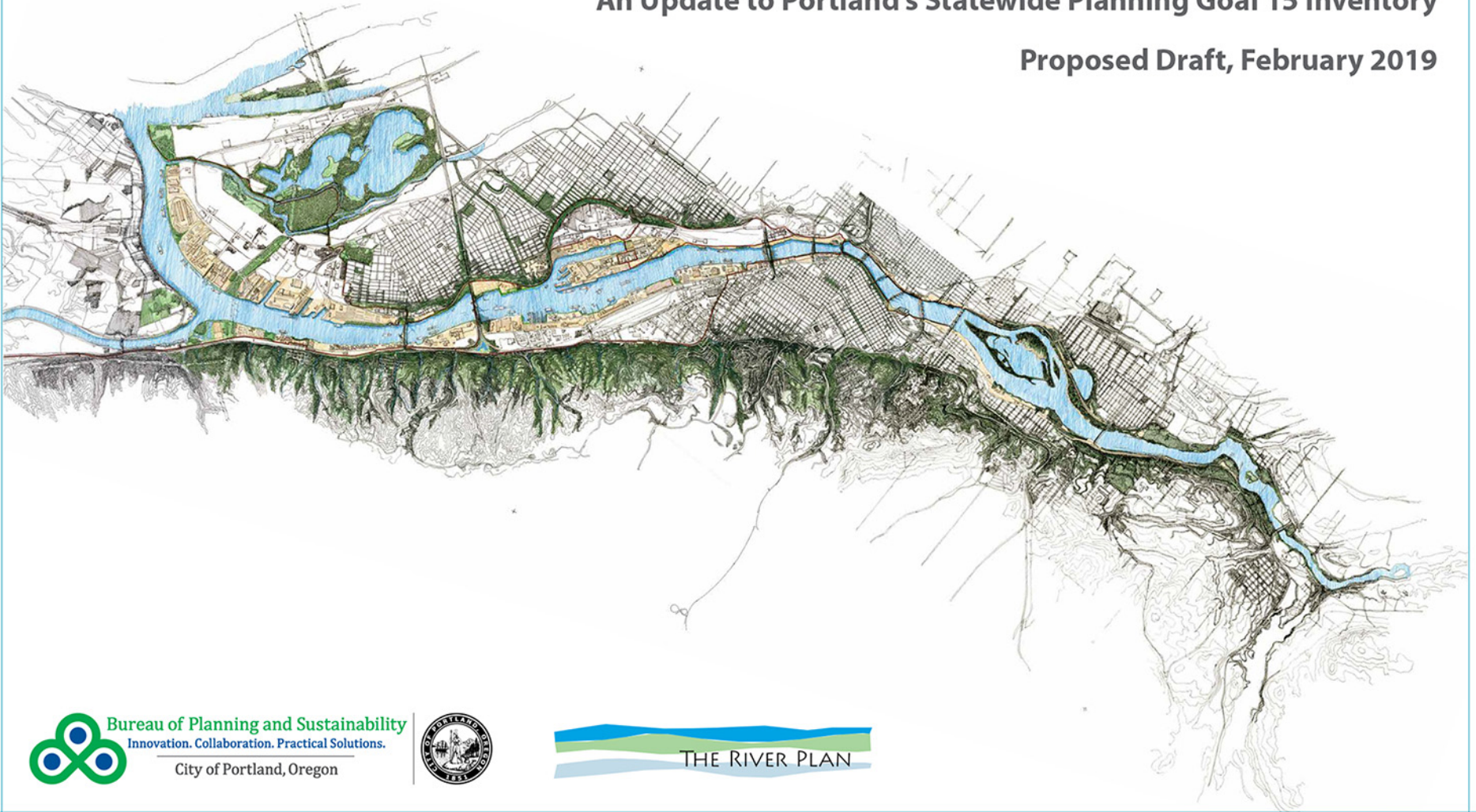
Bureau of Planning and Sustainability  
Innovation. Collaboration. Practical Solutions.



# Willamette River Greenway Inventory

An Update to Portland's Statewide Planning Goal 15 Inventory

Proposed Draft, February 2019





# Project Overview

- First inventory completed in 1986.
- Inventory limited to what is specified in Statewide Planning Goal 15 (Willamette River Greenway). More information considered in river planning efforts.
- There are no changes to policies, plans or regulations.
- This update incorporates changes from recently adopted plans: *2035 Comprehensive Plan* and *Central City 2035 Plan*.



# Process

- Developed Proposed Draft of updated inventory (February 2019).
- Noticed over 5,000 property owners and other interested people of open house and PSC hearing.
- Communicated through River Plan News and web page.
- Held an open house on March 6. Fifteen people attended.



*View of Kelley Point Park*



# Willamette River Greenway Inventory

- Maps and data: land uses, base and overlay zones, ownership, natural resource characteristics, recreation and historic/cultural resources.
- Sources – mostly BPS GIS data, some County and other data sources.
- Notable changes to Central Reach (Central City) - zoning, overlay zones, scenic and natural resources.
- Changes elsewhere – new zones applied to implement *2035 Comprehensive Plan*.



*Sellwood Ferry, 1925*





# Amendments

- Page 4, Table 2: Acres per Zone by Willamette River Reach, delete line 21 of table that lists OS zone, just above the reach totals. It is an error.
- Pages 22-23, Map 5: Ownership, remap to include only commercial and industrial docks (remove any residential and recreational docks from this map), relabel the legend to clarify the docks included on map, and add a description of the docks to the Explanation of Data on the Maps on page 7.
- Pages 28-29, Map 8 Recreation, relabel legend to say Public Parks and Natural Areas, and Public Launch Ramps, remove Oaks Amusement Park green designation from map, and improve labeling clarity on map, where there's overlapping designations at certain locations. Clarify on Explanation of Data on the Maps on Page 10 that the map reflects public parks and natural areas. Also, relabel Willamette Park boat launch to motorized and non-motorized and delete motorized boat launch from legend.



# Willamette River Greenway Inventory

An Update to Portland's Statewide Planning Goal 15 Inventory

Proposed Draft, February 2019

