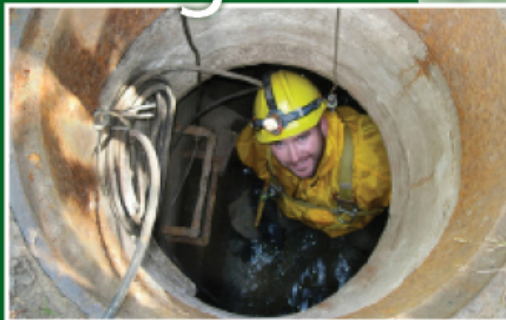


working for clean rivers



Chapter 17.38 Update

City Council Presentation

Adrienne Aiona, PE

Codes, Rules & Manuals

October 7, 2020



ENVIRONMENTAL SERVICES
CITY OF PORTLAND

working for clean rivers



190166



BES manages Portland's wastewater and stormwater infrastructure to protect public health and the environment.



17.38 Drainage and Water Quality

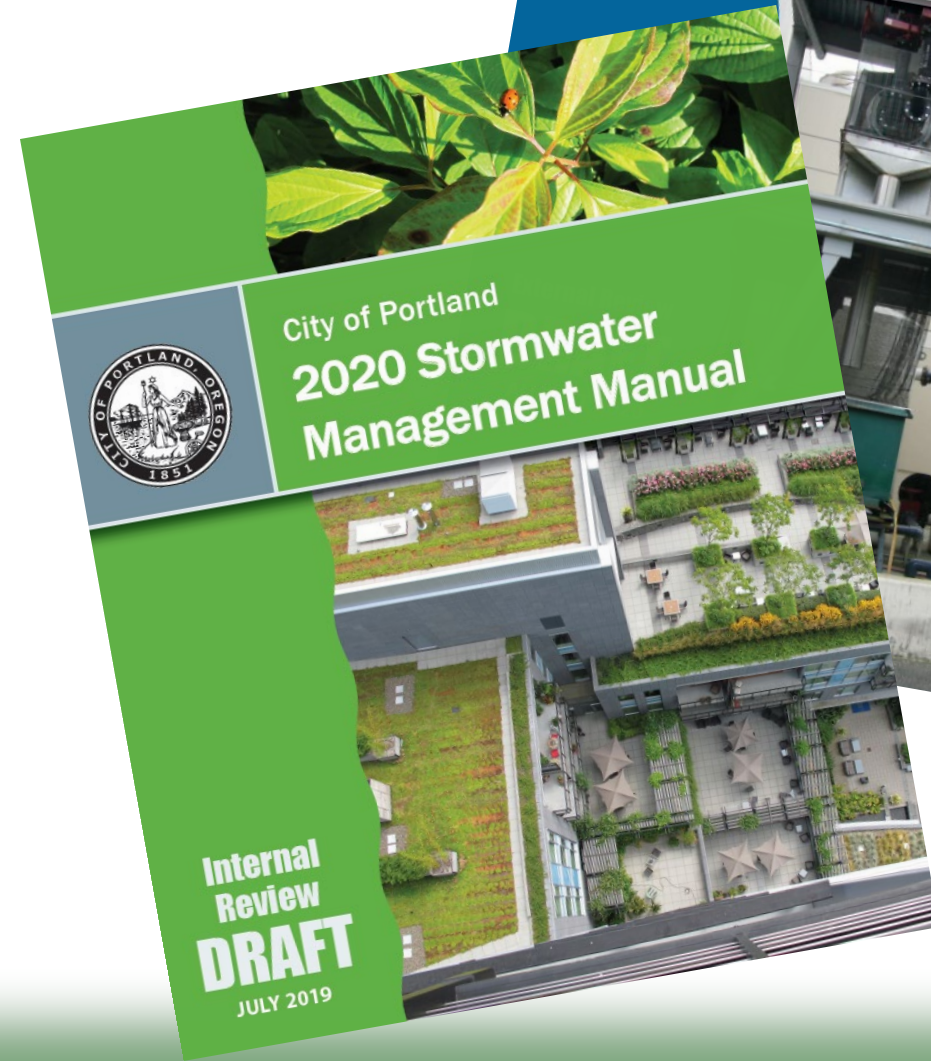
Code authority to protect water quality:

- In place since 1999
- Protection of streams and rivers, groundwater, and city systems.
- Compliance with State and Federal environmental permits (MS4, CSO, UIC, and TMDL).
- Management of stormwater.
- Control of pollutant generating activities.

17.38 Drainage and Water Quality

Supports code authority for:

- **Source Control Manual:**
Regulates pollutant generating activities (e.g. industrial sites, trash, gas stations, and others)
- **Stormwater Management Manual:**
Requires stormwater management for development projects
- **Maintenance Inspection Program:**
Provides ongoing inspections of stormwater facility maintenance



Alignment with 2035 Comprehensive Plan



Chapter 7: Environment and Watershed Health

“Improve... **watershed health**, including hydrology, water quality...”

“Prevent incremental environmental degradation including... adverse impacts of **additional impervious area.**”

Chapter 8: Public Facilities and Services

“Set clear standards for **service delivery** and system expansion for... stormwater systems...”

“Emphasize the development of facilities that serve **multiple goals.**”

“**Reduce risks** to human and environmental health and safety.”

Chapter 1: The Plan

Policy 1.13: Consistency with state and federal regulations

Policy 1.14: Public facility adequacy

Chapter 3: Urban Form

Goal 3.B: A climate and hazard resilient urban form

Goal 3.G: Nature in the city

Policy 3.7: Integrate nature

Policy 3.20: Green infrastructure in centers

Policy 3.47: Green infrastructure in corridors

Chapter 4: Design and Development

Goal 4.C: Human and environmental health

Policy 4.4: Natural features and green infrastructure

Policy 4.73: Design with nature

Policy 4.75: Low-impact development and best practices

Policy 4.76: Impervious surfaces

Chapter 7: Environment and Watershed Health

Goal 7.B: Healthy watersheds and environment

Goal 7.C: Resilience

Goal 7.D: Environmental equity

Goal 7.E: Community stewardship

Policy 7.1: Environmental quality

Policy 7.6: Hydrology

Policy 7.7: Water quality

Policy 7.14: Natural Hazards

Policy 7.16: Adaptive management

Policy 7.26: Improving environmental conditions through development

Chapter 8: Public Facilities and Services

Goal 8.A: Quality public facilities and services

Goal 8.B: Multiple benefits

Goal 8.E: Sanitary and stormwater systems

Policy 8.3: Urban service delivery

Policy 8.20: Regulatory compliance

Policy 8.21: System capacity

Policy 8.42: Stormwater management

Policy 8.66: Pollution prevention

Policy 8.68: Stormwater facilities

Policy 8.69: Stormwater as a resource

Policy 8.70: Natural systems

Policy 8.71: Green infrastructure

Policy 8.72: Stormwater discharge

Policy 8.73: On-site stormwater management

Policy 8.74: Pollution prevention

Policy 8.75: Stormwater partnerships



Changes and Benefits

Comprehensive rewrite and reorganization.

- Improve clarity
- Simplify language
- Update in parallel with administrative rules for consistency

- 17.38 changes do not expand BES authority.
- Modernize language including definitions.
- Gender neutral language.
- Removed some specifics that are addressed in admin rule.



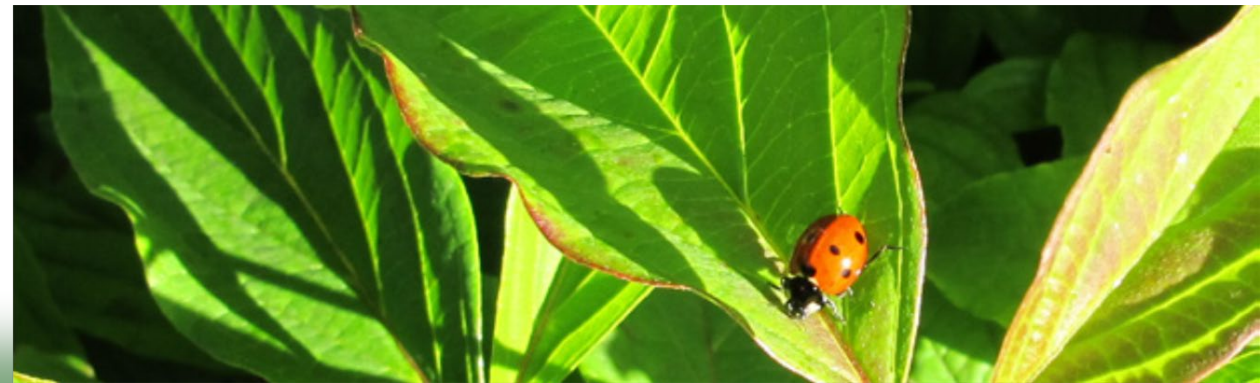
Process

Public comment period along with SWMM. June 2020

- Direct Outreach to:
 - Development community
 - Neighborhood Coalition offices
 - Office of Civic Life approved list of Diversity and Civic Leadership organizations
 - Other interested parties
- Hosted 3 information sessions. Over 100 attendees.
- No public comments received on 17.38.

Schedule

- Pending Council vote: 17.38 in effect early November
- Associated updates to the SWMM and SCM take effect later this year with approval from the BES Director



Contributors

190166

Stormwater Manual

Alice Coker, PM

Amy Simpson

Environmental Compliance

Matt Criblez, Angela

Henderson, Stacy Hibbard,

Jason Schmidt

Systems Development

Stephen Himes, Rosa

Lehman, Emma Kohlsmith,

Joe Blanco, Bret Winkler

Strategy

Rachele Altman, Alice

Brawley-Chesworth, Kaitlin

Lovell, Barb Adkins, Loren

Shelley, Joel Bowker

Business Services

Sherri Peterson



Thank you
& Questions