

# Environmental Overlay Zone Map Correction Project



## Planning and Sustainability Commission Project Briefing September 8, 2020



# Agenda

1. Introduction/Project Summary
2. Ezone Exemptions (33.430)
3. Existing Map Error Correction Process
4. Who Benefits/Who is Burdened
5. Summary of the ESEE Analysis
6. Wildfire
7. Site Visit Update

We will prepare a separate memo on septic systems.



# Summary of Project

## 1. Purpose of environmental overlay zones

- To protect streams, wetlands, flood areas, steep slopes, forests and wildlife habitat.
- To protect the resources to protect people and homes from risk of landslides and floods and support healthy neighborhoods.

## 2. Purpose of this project

- To correct the boundaries of the environmental overlay zones to better align with existing natural resources.

## 3. Why is the project needed

- The overlay zones were applied 20-30 years ago, and the technology has improved greatly revealing that the resources we intended to protect are not always protected. This project is fixing that.

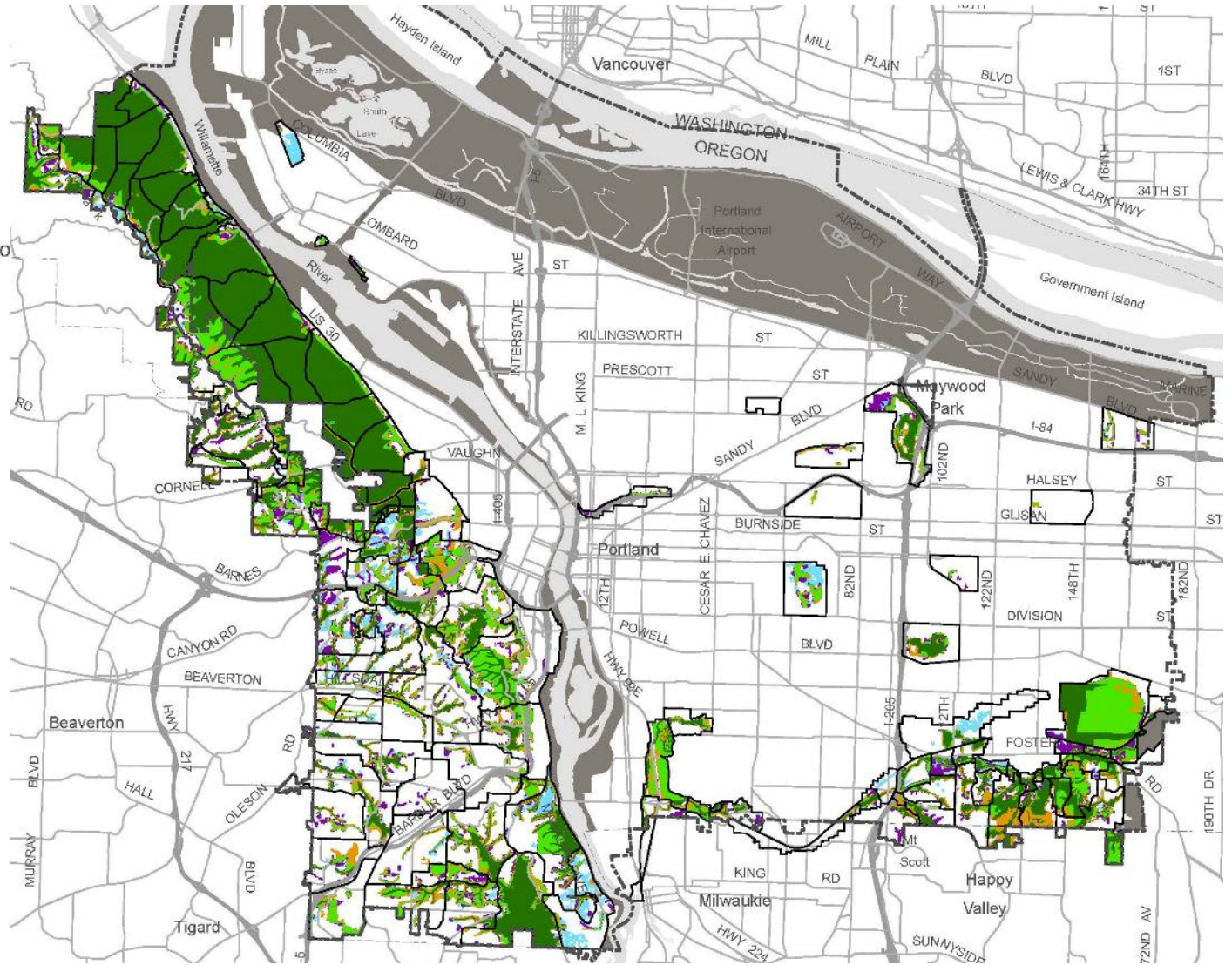




# Summary of Project

## Legend

- Existing Protection zone (p)
- Existing Conservation zone (c)
- Ezone expansion areas
- Ezone removal areas
- NRI Values (Med/High) where no Ezones are present
- Resource Sites
- Not included in project area
- Urban Service Boundary





# 33.430 Exemptions

1. Maintenance, repair, and replacement of existing houses, decks, driveways, fences
2. Maintenance of existing gardens, pastures, lawns, and other planted areas
3. Changes to existing disturbance areas to accommodate gardens and play areas
4. Change of crop type or farming technique
5. Pruning and removal trees and shrubs within 10 feet of buildings and structures (tree replacement is required)
6. Removal of trees that are dead, dying and dangerous (tree replacement is required)
7. Removal of invasive plants and planting of native plants

Reference: [33.430.140](#)



---

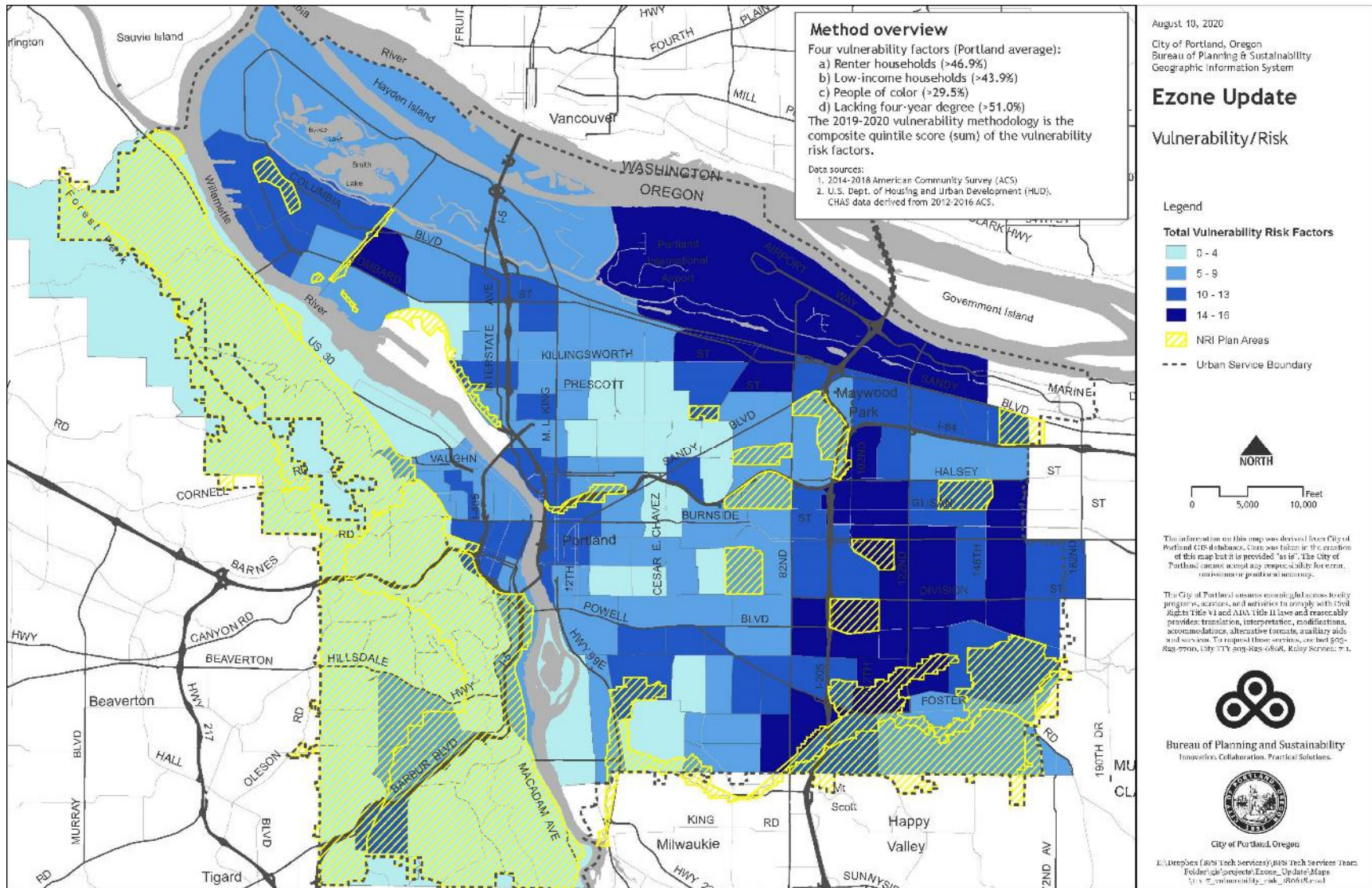
# Existing Map Error Correction Process

1. **Free process**
2. **Anyone can request a map error correction at any time**
3. **One of two criteria must be met:**
  - Line should follow a topographic feature
  - There is discrepancy between maps and enough legislative intent to determine where the line should go

Reference: [33.855.070.A](#)

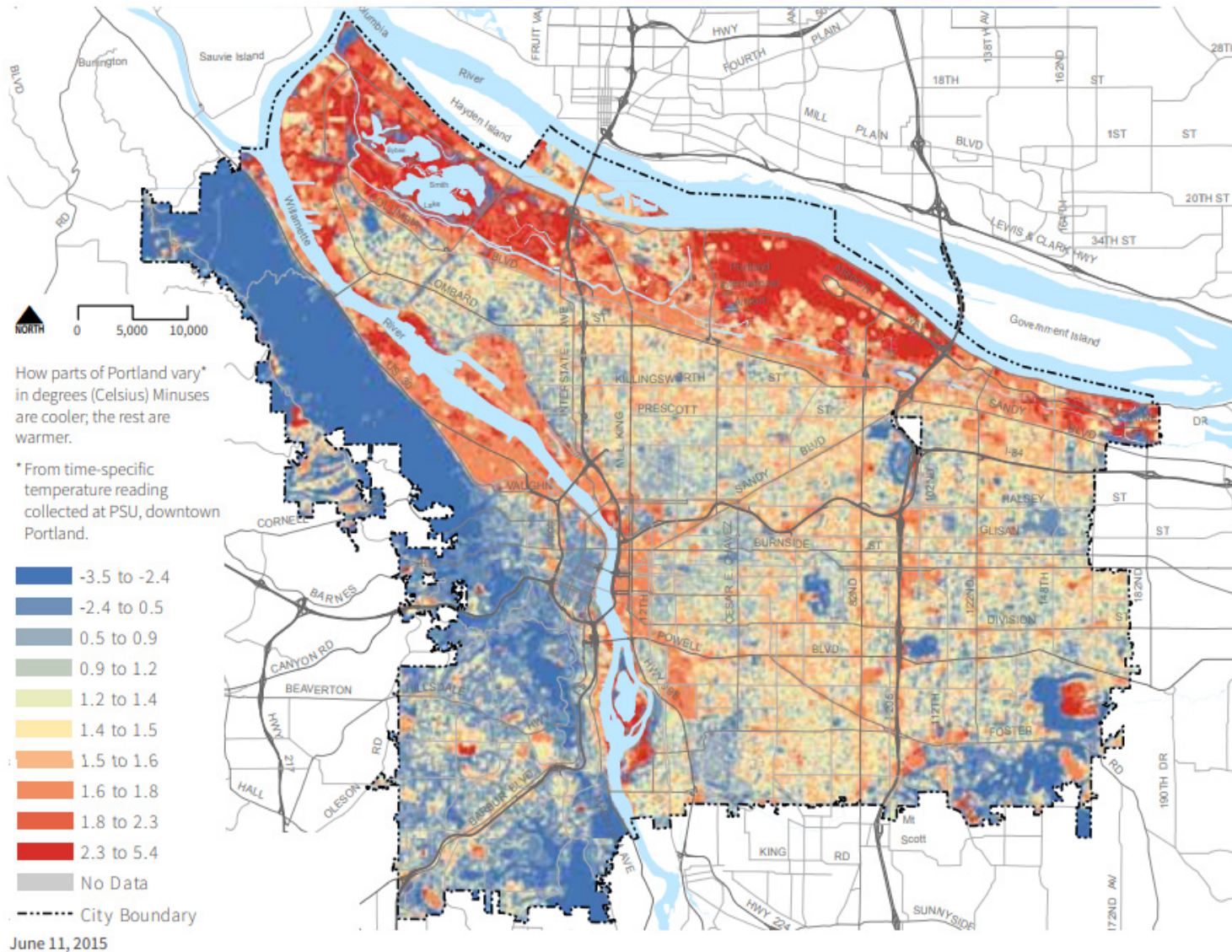


# Who Benefits/Who is Burdened





# Who Benefits/Who is Burdened



# ESEE Analysis Process

(Economic, Social, Environmental and Energy)

**1989-2002:** Portland adopted 12 plans that comply with Goal 5

- Each has an ESEE
- Outcome – application of overlay zones throughout Portland

**2005:** Metro adopted Title 13, Nature in Neighborhoods

- Title 13 includes an ESEE and is in compliance with Goal 5
- Local jurisdictions may rely on Title 13 to comply with Goal 5

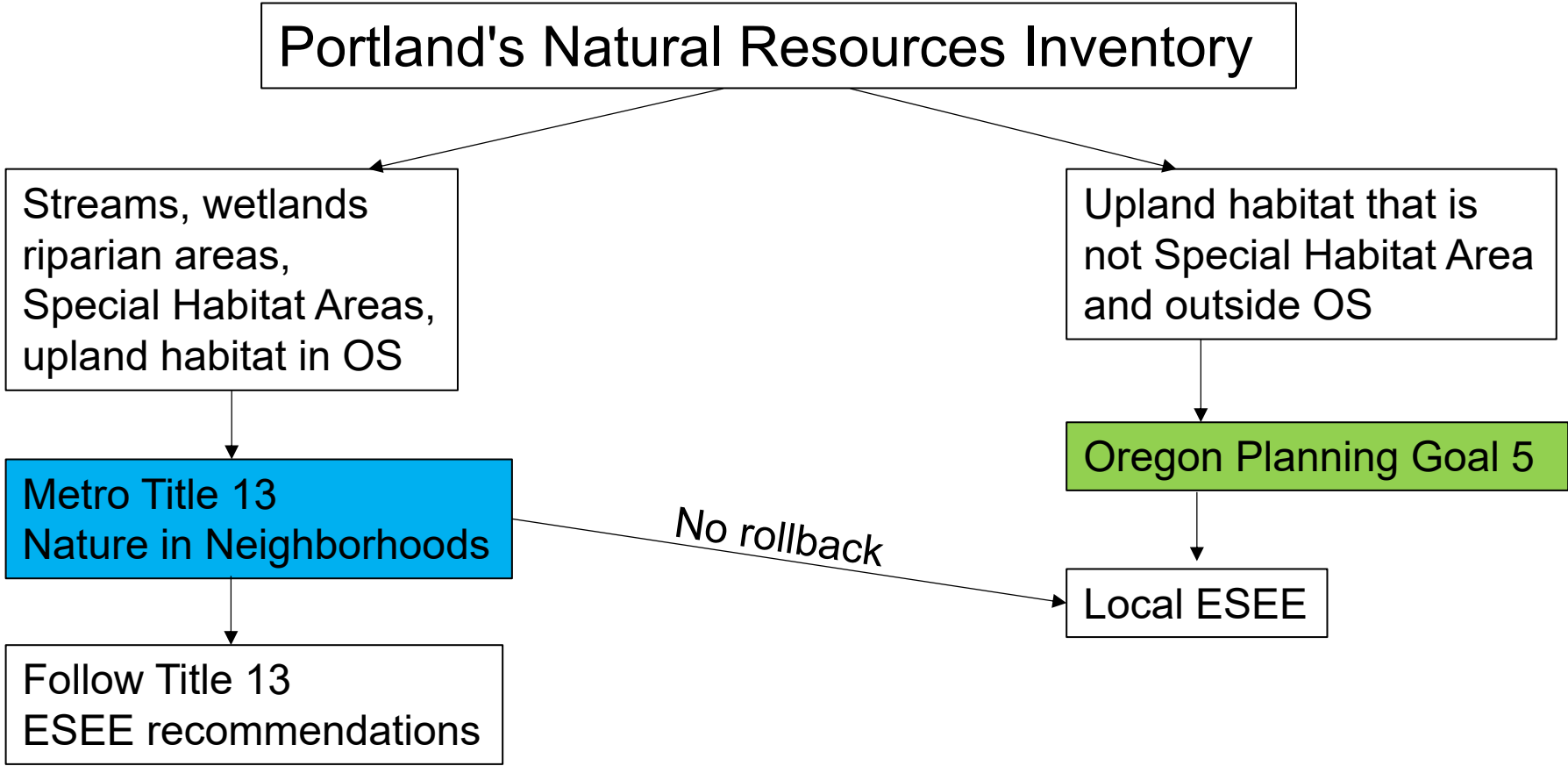
**2012:** Portland's existing program deemed in compliance with Title 13

**2018:** 2035 Comprehensive Plan calls for updating Environmental Program

- Portland can rely on Metro Title 13 to maintain Goal 5 compliance



# ESEE Analysis Process





# Wildfire Related Exemptions

## 33.430.140 Exemptions:

1. Pruning of trees and shrubs within 10 feet of structures
2. Removal of trees within 10 feet of structures
3. Removal of invasive plants and planting native plants
4. Pruning of vegetation in accordance with Title 11
  - Pruning coniferous trees within 30 feet of structures within wildfire hazard zone
  - Pruning to abate an immediate danger

Reference: [33.430.140](#)



---

# Wildfire, continued.

## Firewise recommendations:

1. Remove flammable materials with 5 feet around homes
2. Trees removed within 10 feet of homes
3. 5 to 30 feet around homes with no ladder fuels

The best way to reduce wildfire risk in natural areas is to remove invasive plants and plant more fire-resistant native plants.

Resources: [Portland Plan List](#) & [Fire-Resistant Plants for Home Landscapes](#)



# Site Visits Update

See Attachment K (updated)

- June 19 – August 25, 2020
- Most were the result of calls/emails (not testimony)
- 90 site visits
  - 8 no change/confirmed resources
  - 59 tree canopy mapping updates
  - 20 stream mapping updates
  - Other
- Walk through 2 examples





# Site Visit – Example 1: Streams



Bureau of Planning and Sustainability  
Innovation. Collaboration. Practical Solutions.  
City of Portland, Oregon

## Environmental Overlay Zone Map Correction Project

### Existing Ezones

#### Stream Edit

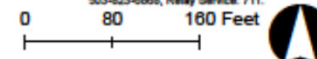
### Legend

- piped stream segment
- open stream channel
- taxlots
- Existing C Zone
- Existing P Zone

**DRAFT**

September 4, 2020

The information on the map was derived from digital databases. Care was taken in the creation of this map but it is provided "as is". The City of Portland ensures meaningful access to city programs, services, and activities to comply with Civil Rights Title VI and ADA Title II laws and reasonably provides: translation, interpretation, modifications, accommodations, alternative formats, auxiliary aids and services. To request these services, contact 503-823-7700, City TTY 503-823-8868, Relay Service: 711.

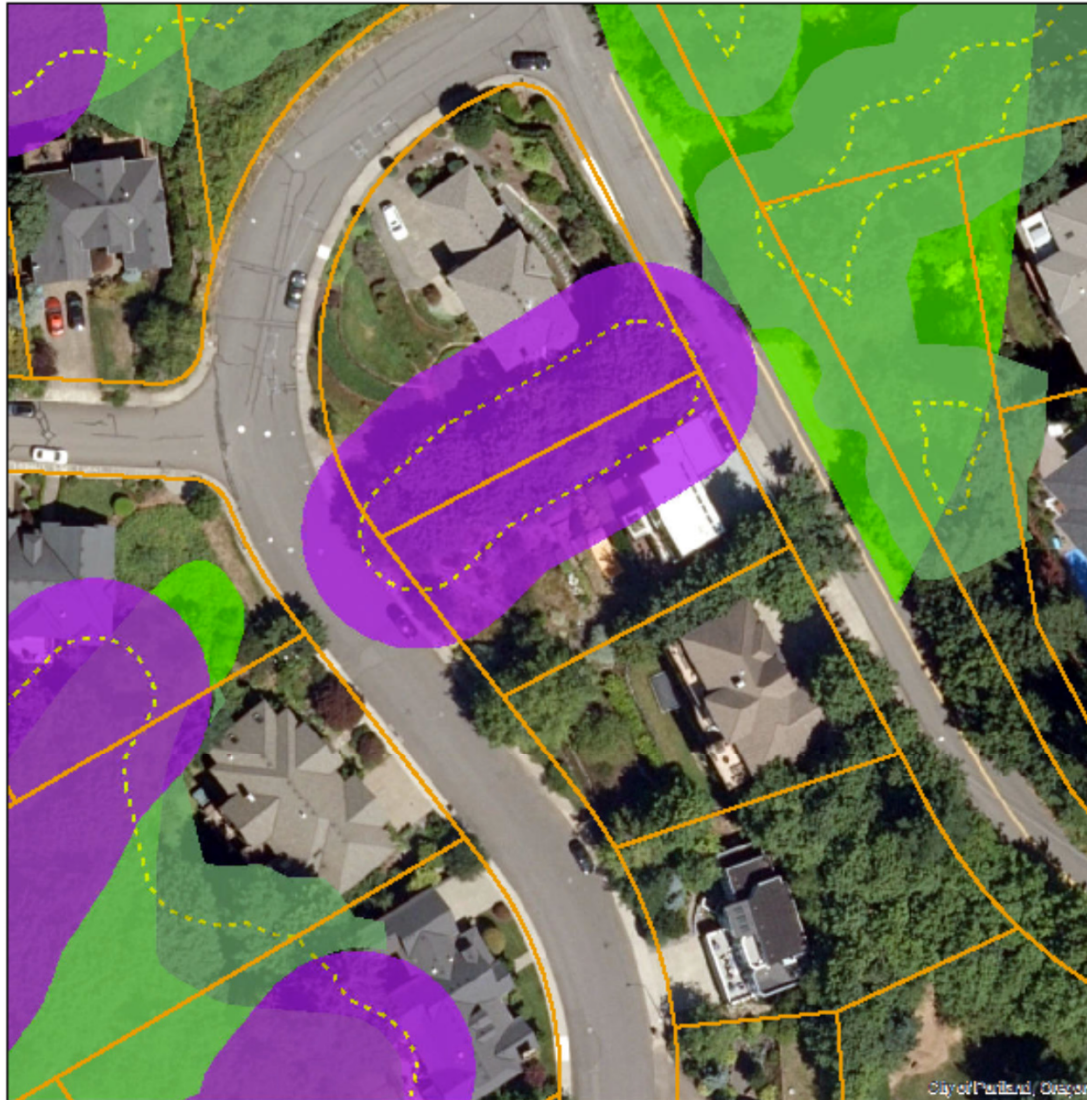


Bureau of Planning and Sustainability  
Innovation. Collaboration. Practical Solutions.





# Site Visit – Example 1: Streams



Bureau of Planning and Sustainability  
Innovation. Collaboration. Practical Solutions.  
City of Portland, Oregon

## Environmental Overlay Zone Map Correction Project

Draft Ezones

Stream Edit

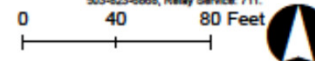
### Legend

- taxlots
- Transition Area
- Draft C Zone
- Draft P Zone
- Existing C Zone
- Existing P Zone

**DRAFT**

September 4, 2020

The information on the map was derived from digital databases. Care was taken in the creation of this map but it is provided "as is". The City of Portland ensures meaningful access to city programs, services, and activities to comply with Civil Rights Title VI and ADA Title II laws and reasonably provides: translation, interpretation, modifications, accommodations, alternative formats, auxiliary aids and services. To request these services, contact 503-825-7700, City TTY 503-825-8868, Relay Service: 711.



Bureau of Planning and Sustainability  
Innovation. Collaboration. Practical Solutions.



# Site Visit – Example 1: Streams



Bureau of Planning and Sustainability  
Innovation. Collaboration. Practical Solutions.  
City of Portland, Oregon

## Environmental Overlay Zone Map Correction Project

### BES Stormwater System

#### Stream Edit

#### Legend

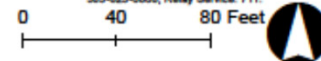
building footprints

taxlots

**DRAFT**

September 4, 2020

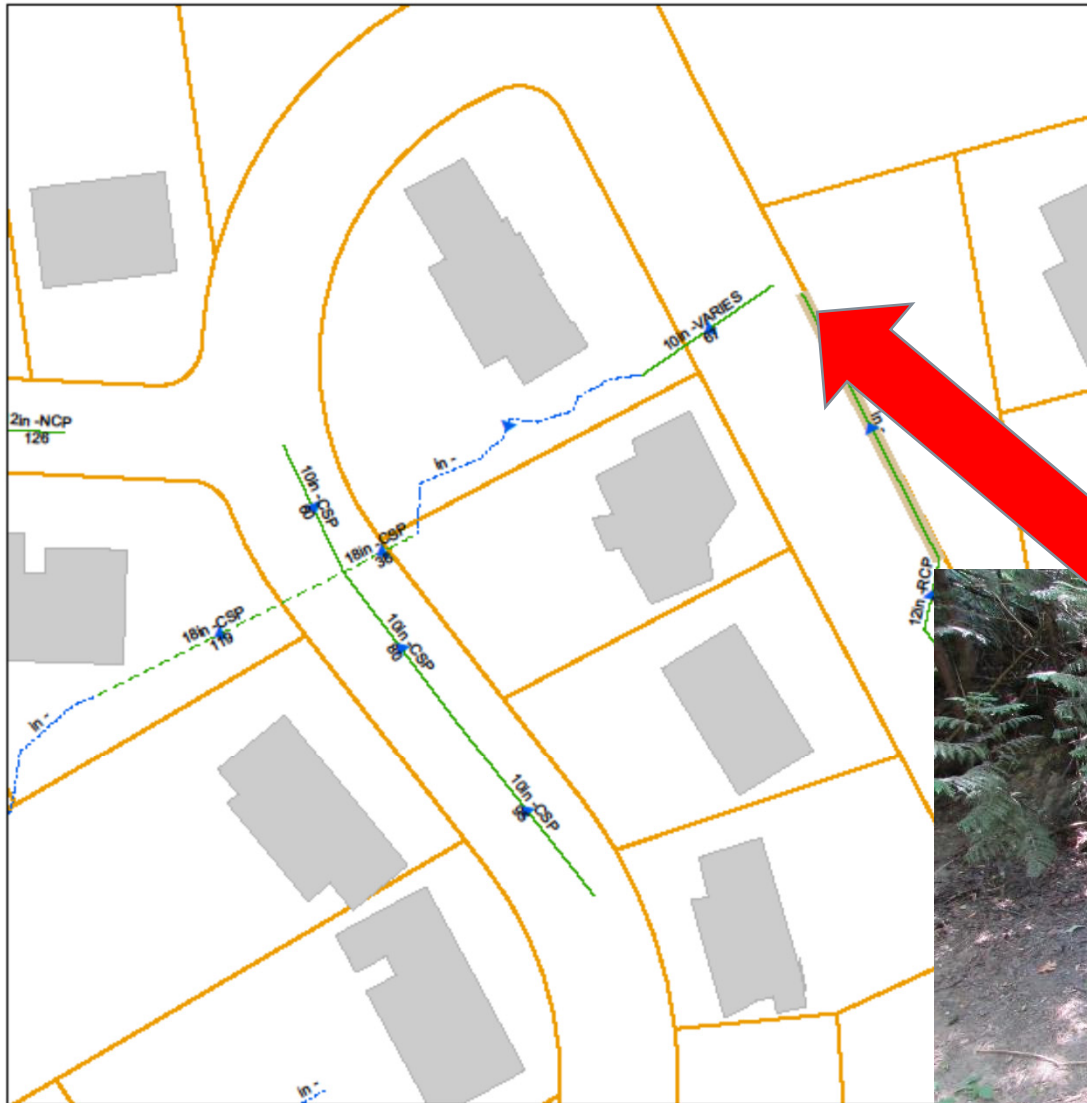
The information on the map was derived from digital databases. Care was taken in the creation of this map but it is provided "as is". The City of Portland ensures meaningful access to city programs, services, and activities to comply with Civil Rights Title VI and ADA Title II laws and reasonably provides translation, interpretation, modifications, accommodations, alternative formats, auxiliary aids and services. To request these services, contact 503-823-7700, City TTY 503-823-8868, Relay Service: 711.



Bureau of Planning and Sustainability  
Innovation. Collaboration. Practical Solutions.



# Site Visit – Example 1: Streams



  
Bureau of Planning and Sustainability  
Innovation. Collaboration. Practical Solutions.  
City of Portland, Oregon

Environmental Overlay Zone  
Map Correction Project

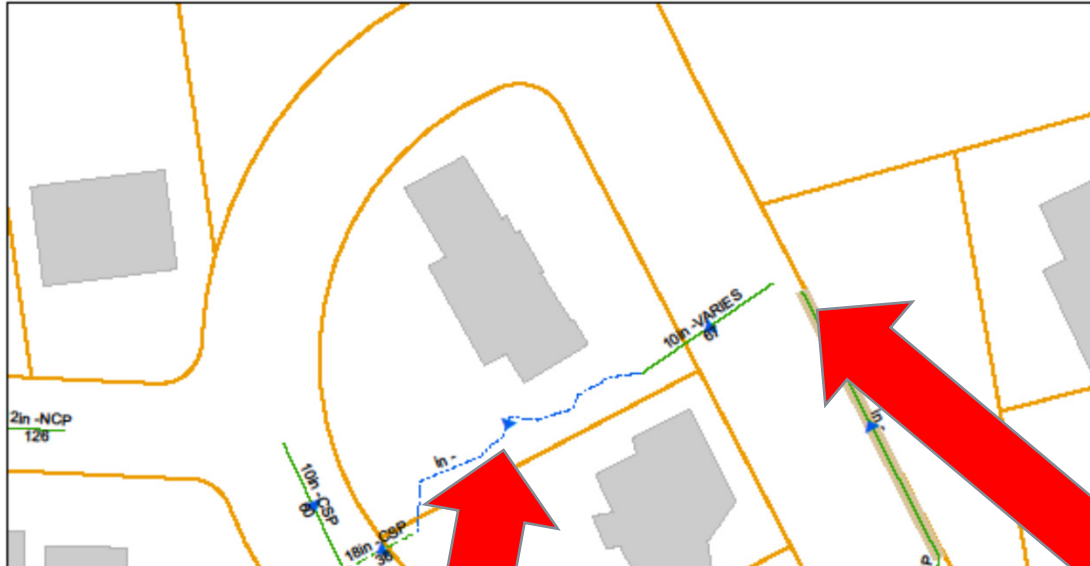
BES Stormwater System

Stream Edit





# Site Visit – Example 1: Streams



Bureau of Planning and Sustainability  
Innovation. Collaboration. Practical Solutions.  
City of Portland, Oregon

Environmental Overlay Zone  
Map Correction Project

BES Stormwater System

Stream Edit



Bureau of Planning and Sustainability  
Innovation. Collaboration. Practical Solutions.





# Site Visit – Example 1: Streams



Bureau of Planning and Sustainability  
Innovation. Collaboration. Practical Solutions.  
City of Portland, Oregon

## Environmental Overlay Zone Map Correction Project

### Edit To Stream Mapping

#### Stream Edit

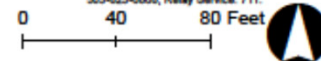
#### Legend

- StreamAdd\_8404NWThomp
- pipied stream segment
- open stream channel
- taxlots

**DRAFT**

September 4, 2020

The information on the map was derived from digital databases. Care was taken in the creation of this map but it is provided "as is". The City of Portland ensures meaningful access to city programs, services, and activities to comply with Civil Rights Title VI and ADA Title II laws and reasonably provides: translation, interpretation, modifications, accommodations, alternative formats, auxiliary aids and services. To request these services, contact 503-823-7700, City TTY 503-823-8888, Relay Service: 711.



Bureau of Planning and Sustainability  
Innovation. Collaboration. Practical Solutions.



# Site Visit – Example 2: Vegetation



Bureau of Planning and Sustainability  
Innovation. Collaboration. Practical Solutions.  
City of Portland, Oregon

## Environmental Overlay Zone Map Correction Project

### Edit to Vegetation Mapping

#### Existing Ezones

#### Legend

-  taxlots
-  Existing C Zone
-  Existing P Zone

**DRAFT**

September 4, 2020

The information on the map was derived from digital databases. Care was taken in the creation of this map but it is provided "as is". The City of Portland ensures meaningful access to city programs, services, and activities to comply with Civil Rights Title VI and ADA Title II laws and reasonably provides: translation, interpretation, modifications, accommodations, alternative formats, auxiliary aids and services. To request these services, contact 503-823-7700, City TTY 503-823-8888, Relay Service: 711.

0 25 50 Feet



Bureau of Planning and Sustainability  
Innovation. Collaboration. Practical Solutions.





# Site Visit – Example 2: Vegetation



Bureau of Planning and Sustainability  
Innovation. Collaboration. Practical Solutions.  
City of Portland, Oregon

## Environmental Overlay Zone Map Correction Project

### Vegetation and Slope

1021 SW STEPHENSON CT

#### Legend

- taxlots
- steep slopes (25% or more)
- forest
- woodland
- shrubland
- herbaceous

**DRAFT**

July 23, 2020

The information on the map was derived from digital databases. Care was taken in the creation of this map but it is provided "as is". The City of Portland ensures meaningful access to city programs, services, and activities to comply with Civil Rights Title VI and ADA Title II laws and reasonably provides: translation, interpretation, modifications, accommodations, alternative formats, auxiliary aids and services. To request these services, contact 503-823-7700, City TTY: 503-823-8888, Relay Service: 711.

0 25 50 Feet

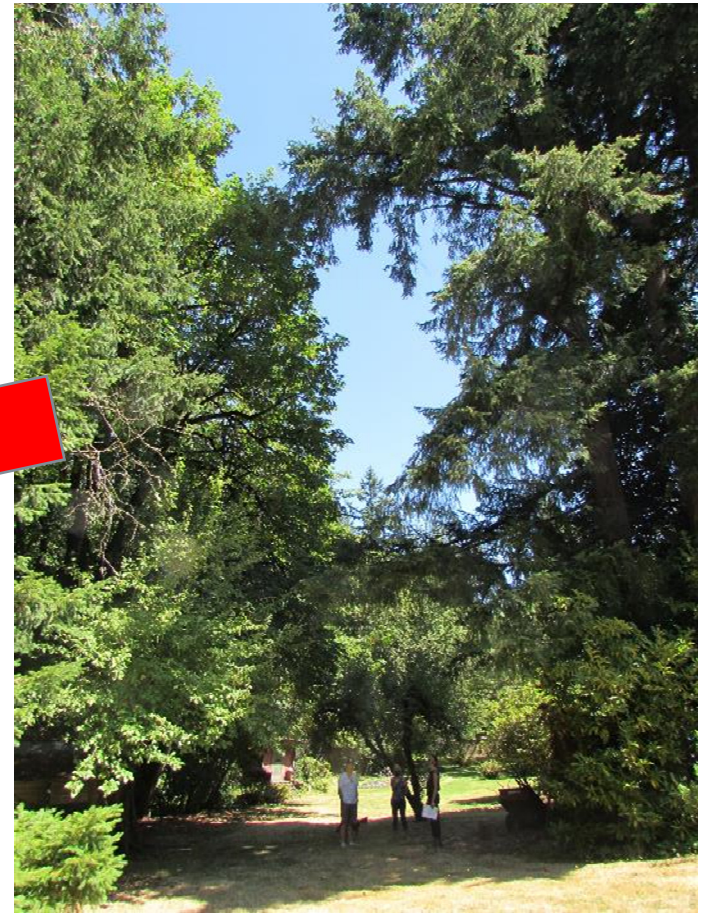
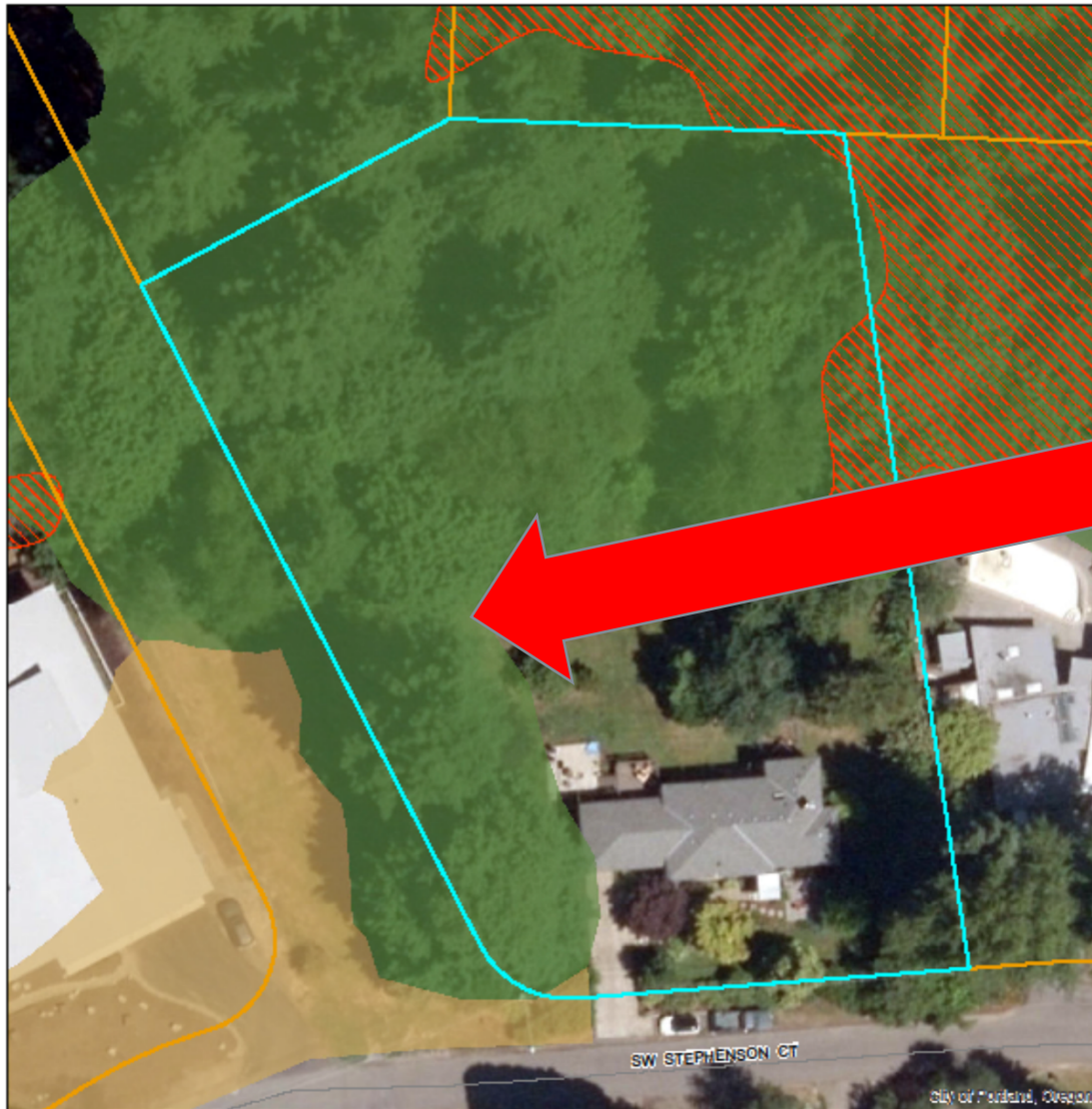


Bureau of Planning and Sustainability  
Innovation. Collaboration. Practical Solutions.



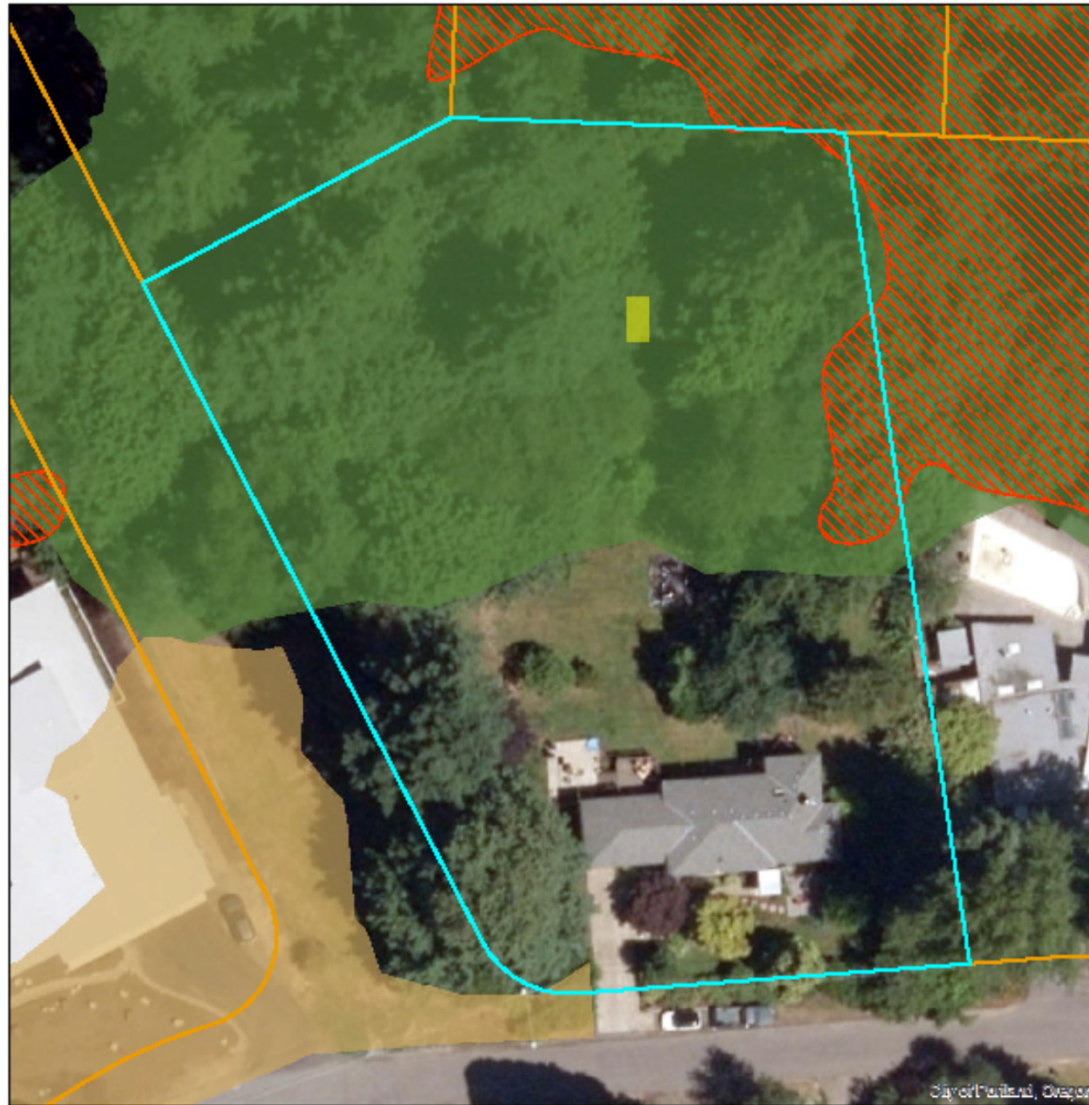


# Site Visit – Example 2: Vegetation





# Site Visit – Example 2: Vegetation



Bureau of Planning and Sustainability  
Innovation. Collaboration. Practical Solutions.  
City of Portland, Oregon

## Environmental Overlay Zone Map Correction Project

[Edit to Vegetation Mapping](#)

**Updated Vegetation Mapping**

### Legend

- taxlots
- steep slopes (25% or more)
- forest
- woodland
- shrubland
- herbaceous

**DRAFT**

September 4, 2020

The information on the map was derived from digital databases. Care was taken in the creation of this map but it is provided "as is". The City of Portland ensures meaningful access to city programs, services, and activities to comply with Civil Rights Title VI and ADA Title II laws and reasonably provides: translation, interpretation, modifications, accommodations, alternative formats, auxiliary aids and services. To request these services, contact 503-823-7700, City TTY 503-823-8868, Relay Service: 711.

0 25 50 Feet



Bureau of Planning and Sustainability  
Innovation. Collaboration. Practical Solutions.



---

# Next Steps

1. Site visits continue through end of November
2. December 8 hearing *postponed*
3. January/February PSC briefing (TBD)
4. February 23 hearing continued
5. Spring 2021 work sessions and recommendation

