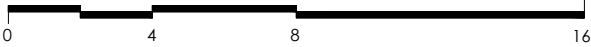
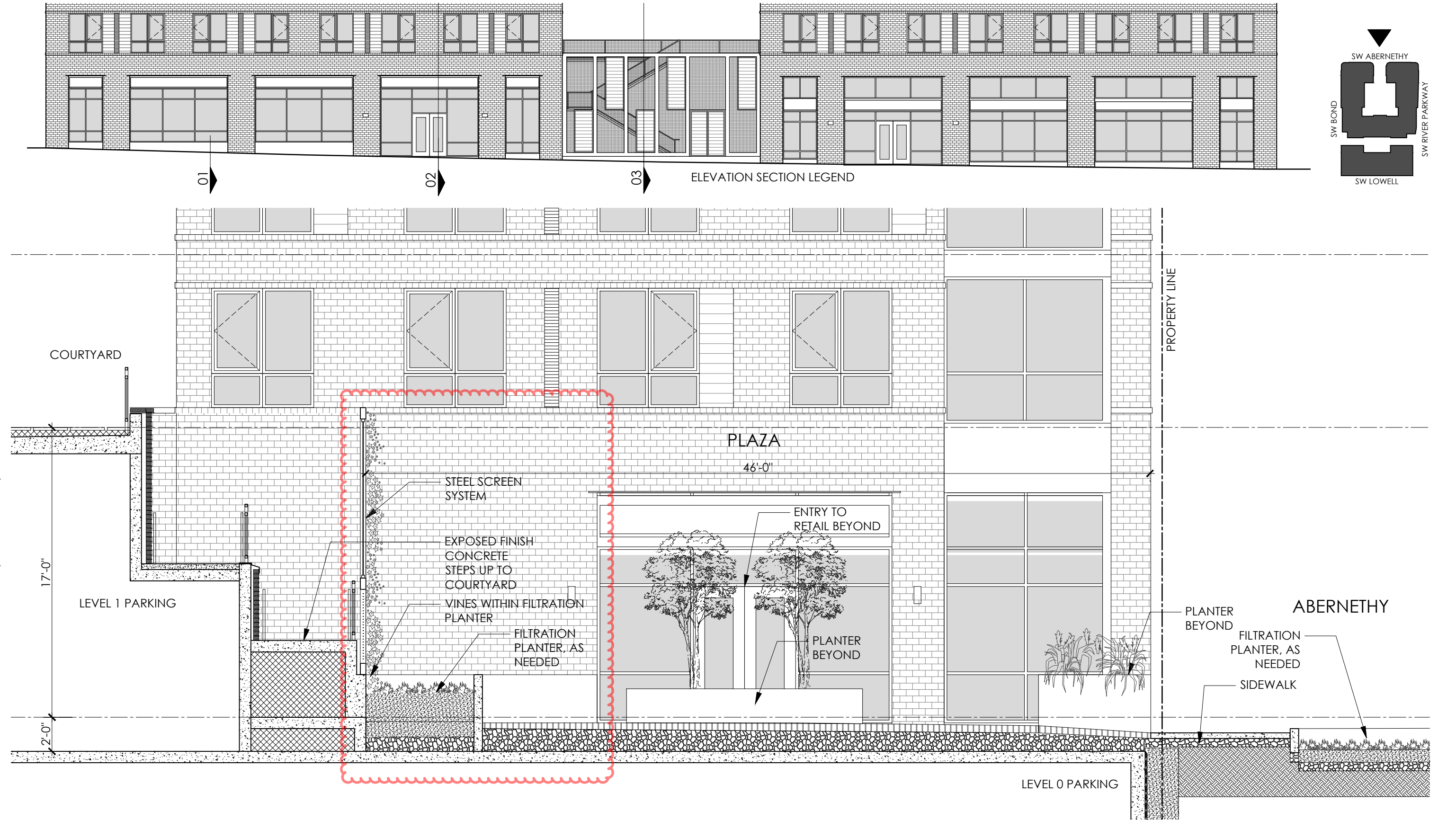


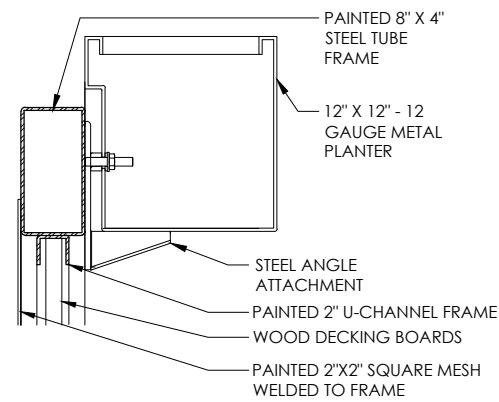
© 2020 HLR ARCHITECTS (INNER BLOCKS 42 & 45)

03 B45A PLAZA SECTION

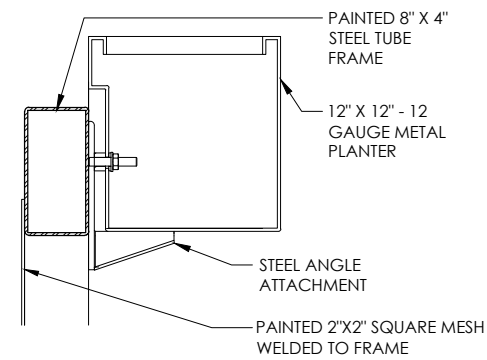


SCALE : 3/16"=1'-0"

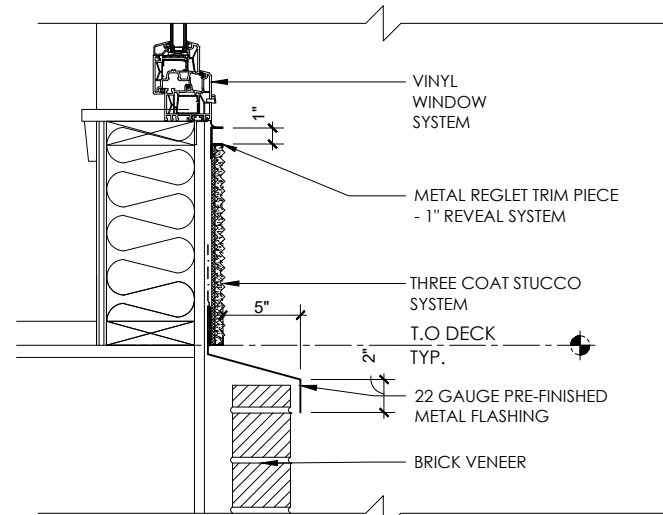




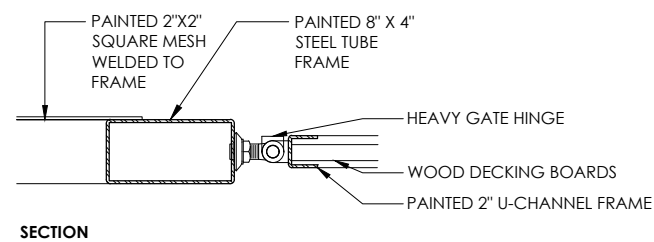
26 PLANTER @ METAL AND WOOD SCREEN



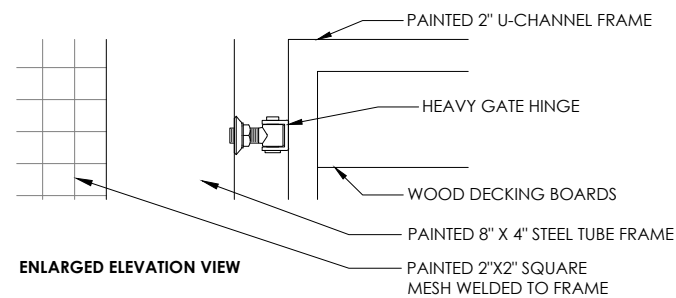
27 PLANTER @ METAL SCREEN



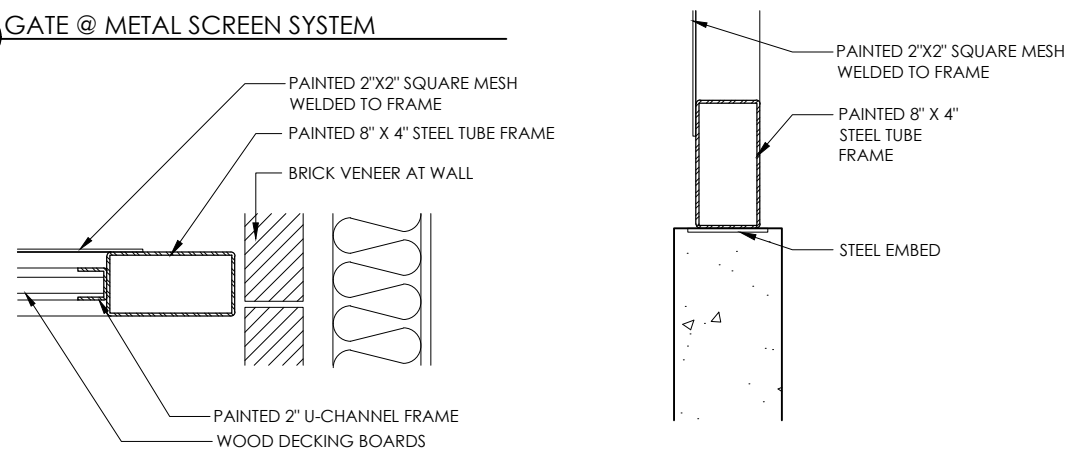
30 METAL SCREEN SYSTEM AT GRADE



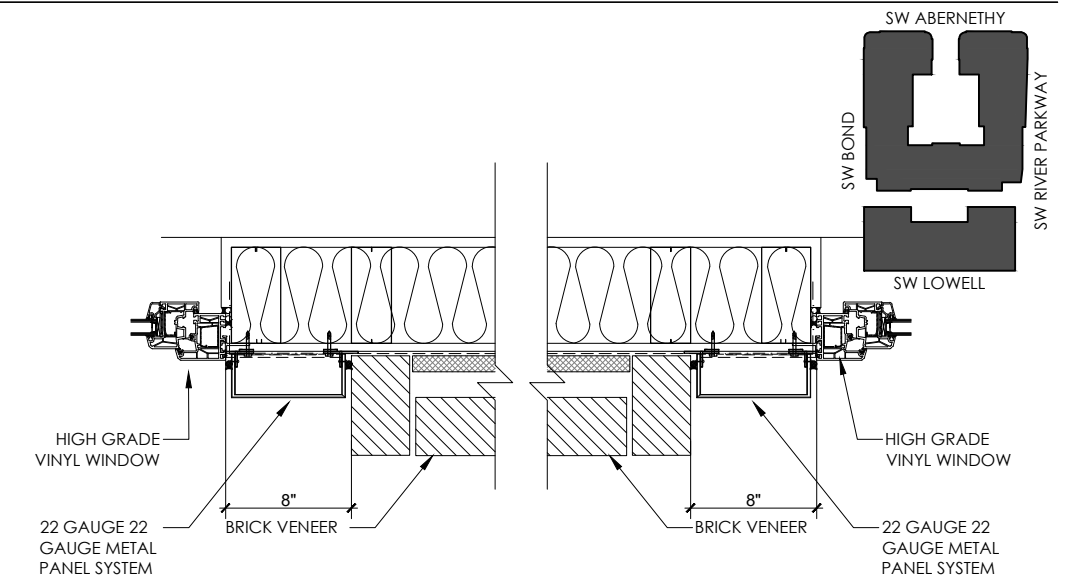
28 GATE @ METAL SCREEN SYSTEM



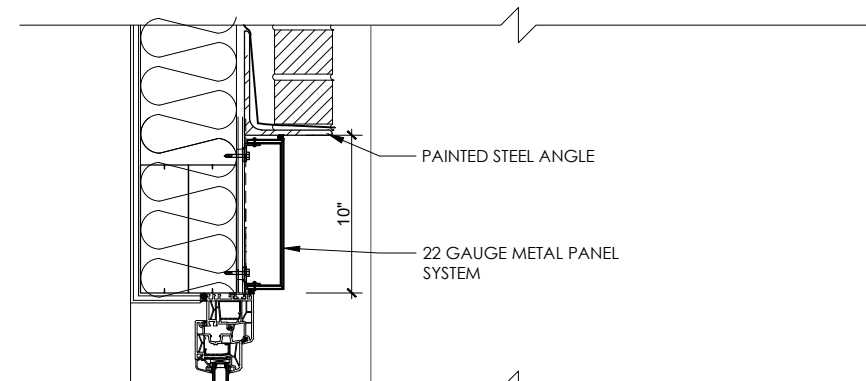
29 METAL AND WOOD SCREEN AT BRICK - PLAN VIEW



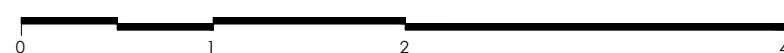
31 STEEL CANOPY AT UNIT PATIO



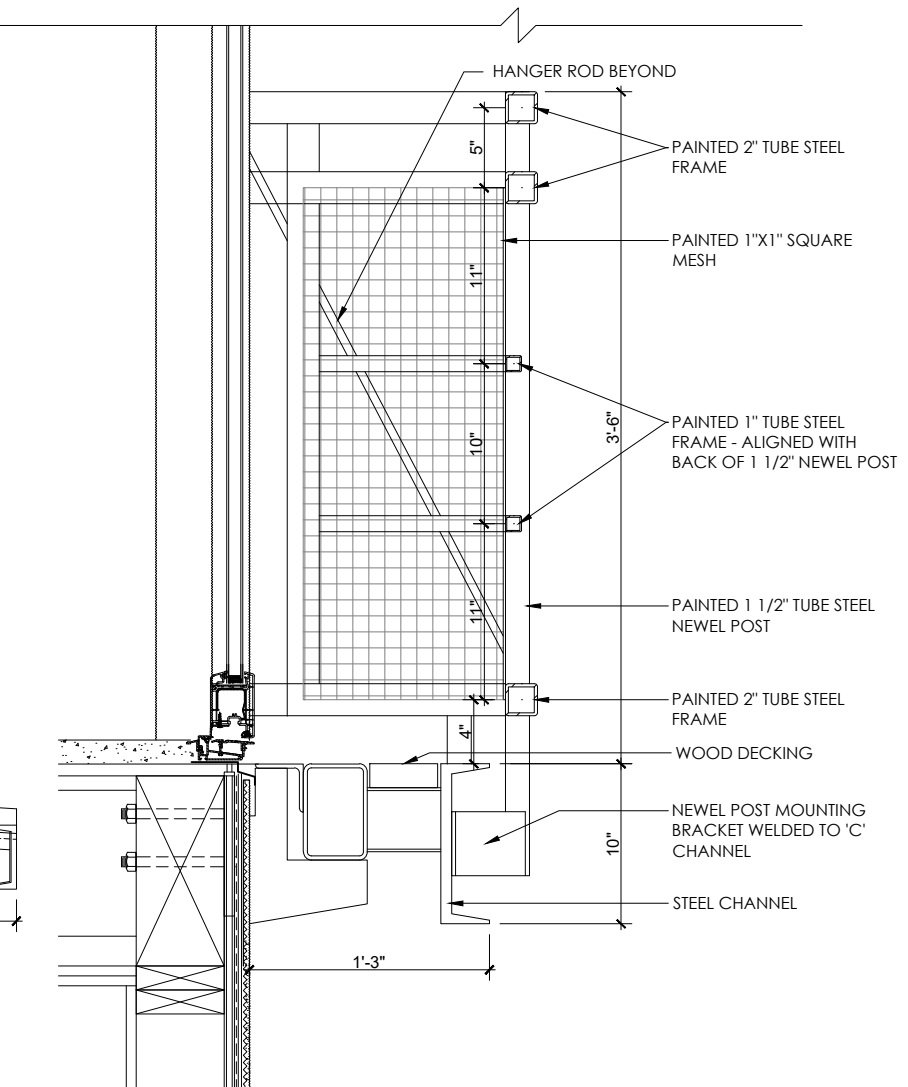
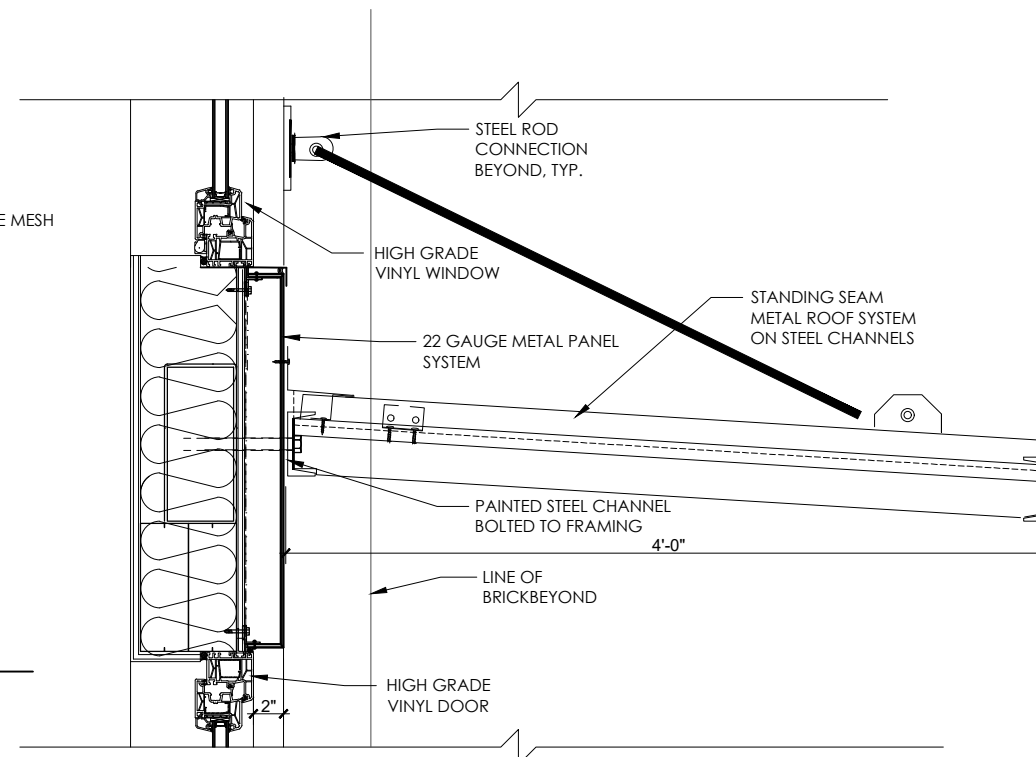
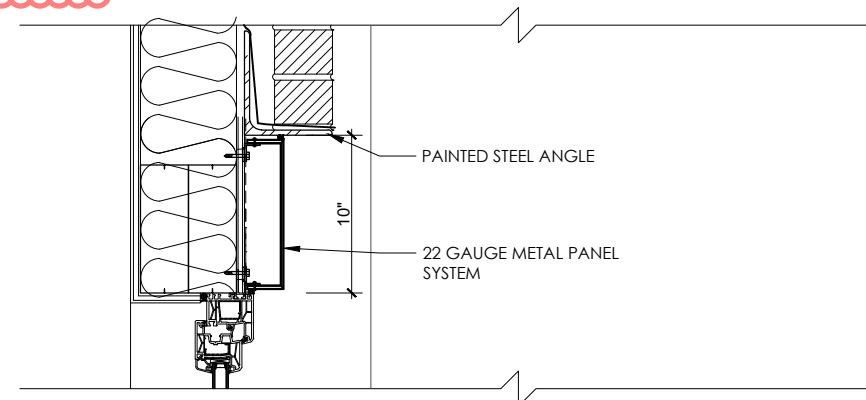
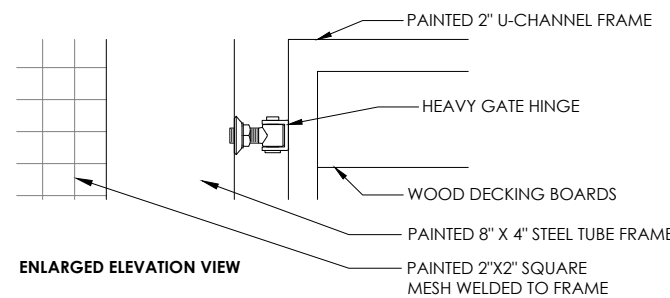
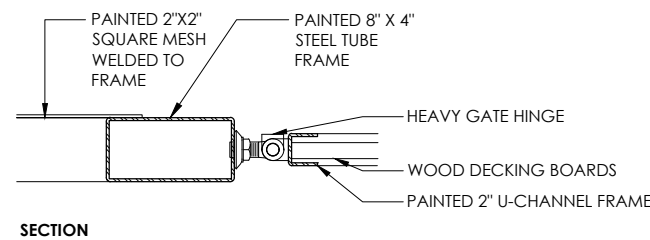
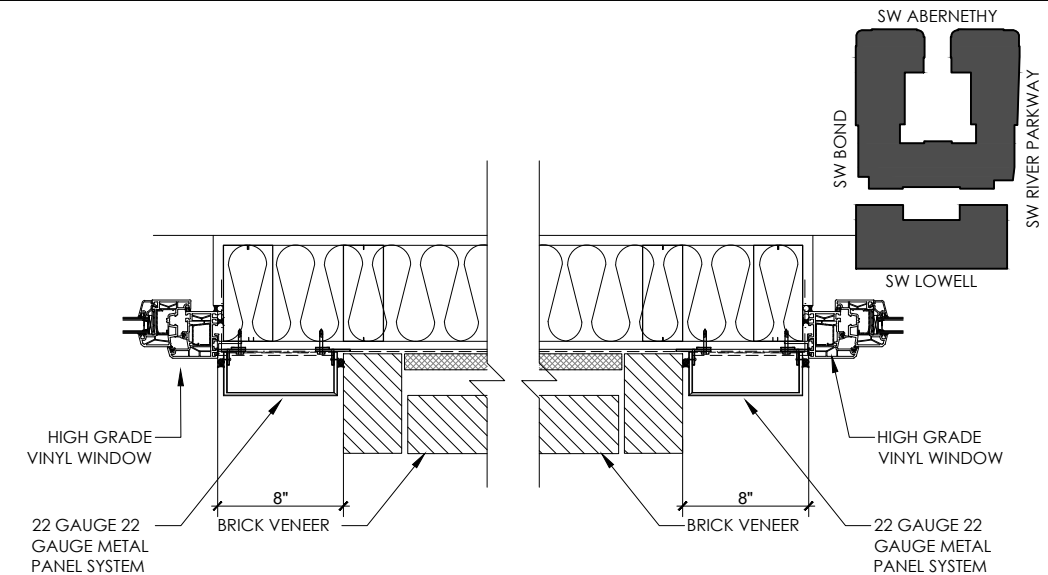
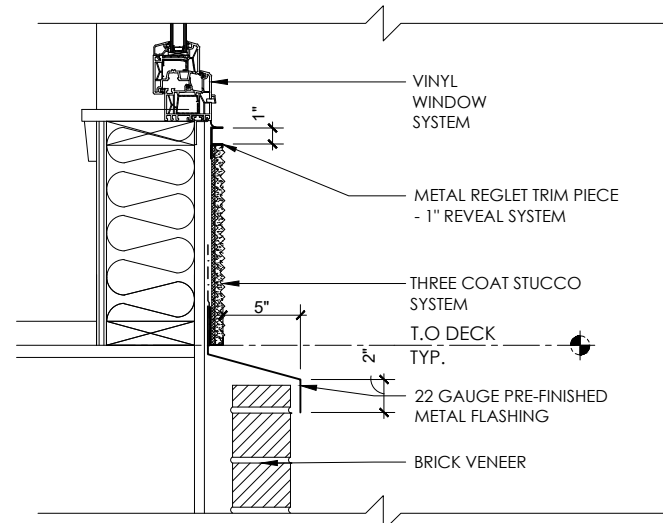
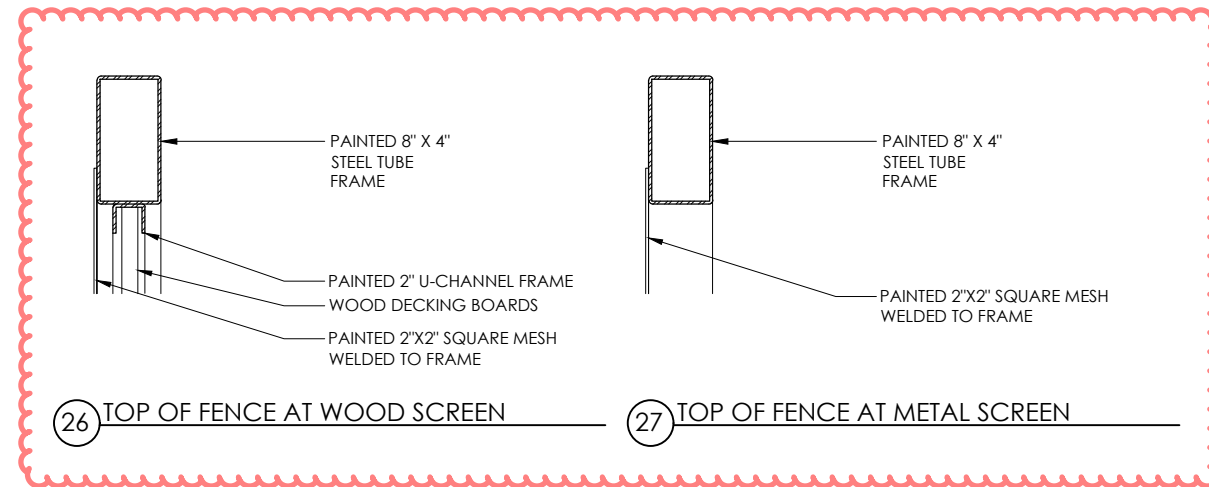
32 VINYL WINDOW JAMBS AT METAL PANEL



33 TYPICAL STEEL BALCONY



SCALE: 1"=1'-0"



30 METAL SCREEN SYSTEM AT GRADE

29 METAL AND WOOD SCREEN AT BRICK - PLAN VIEW

31 STEEL CANOPY AT UNIT PATIO

33 TYPICAL STEEL BALCONY



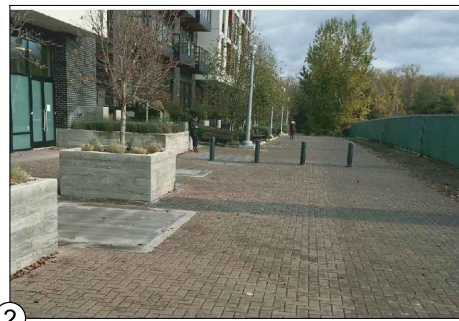


LIGHTING LEGEND

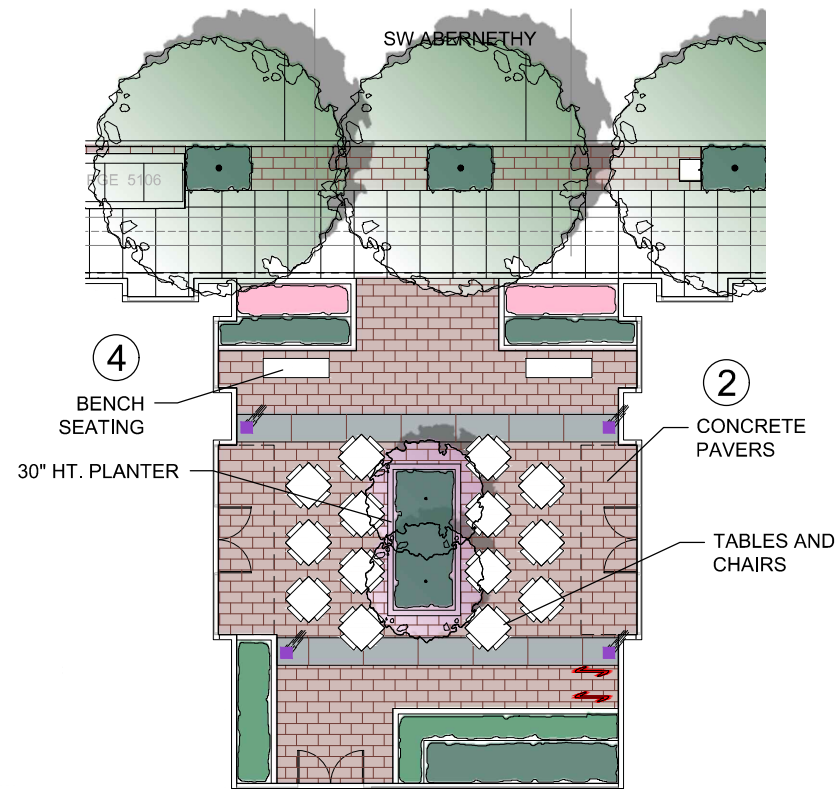
- R.O.W. STREET LIGHTING- REFERENCE CIVIL DRAWINGS FOR SPECIFICATIONS
- LIGHT BOLLARD- FERRARA 900 LED LIGHT BOLLARD



1 R.O.W. STREET LIGHT



2 ENRICHED PAVEMENT AND FORM LINED PLANTERS



3 AT GRADE POP FOUNTAIN

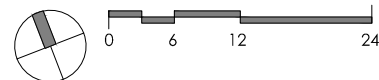
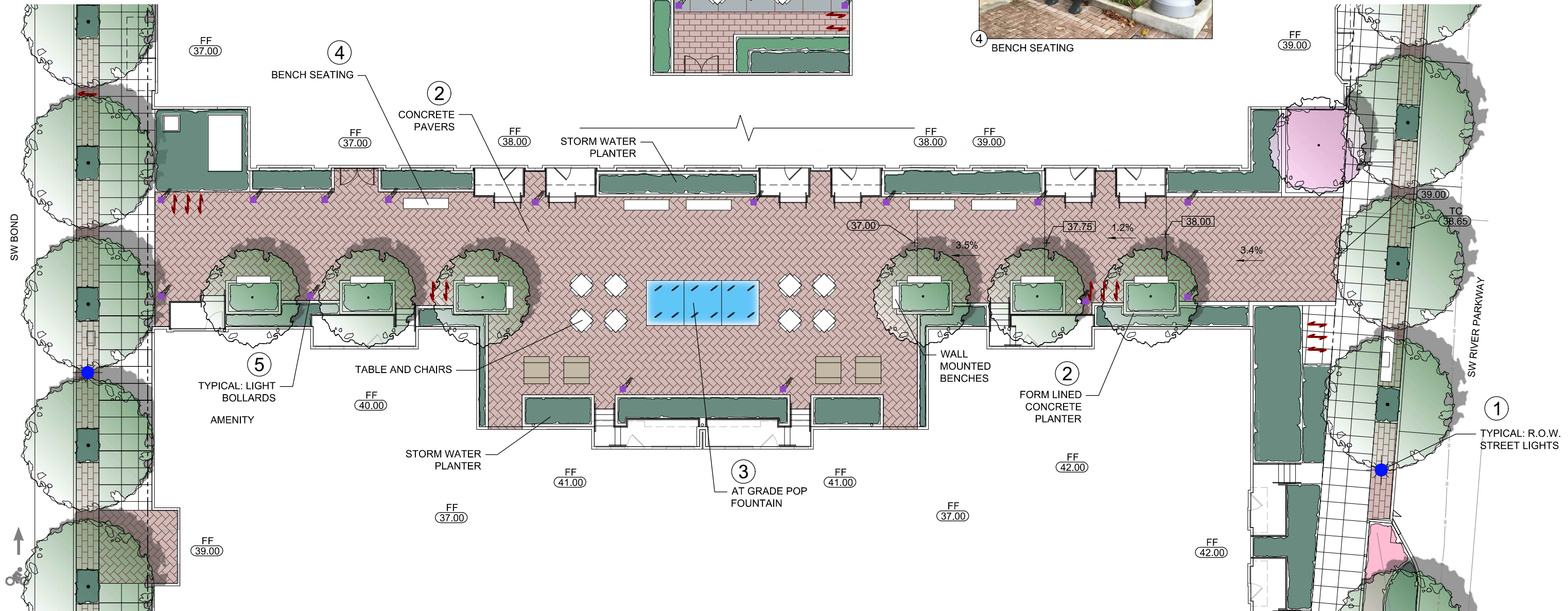


4 BENCH SEATING

- 45.00 - DENOTES CIVIL ENGINEER GRADES
- 42.00 - DENOTES LANDSCAPE ARCHITECT GRADES



5 LIGHT BOLLARD- FERRARA 900 LED LIGHT BOLLARD



# BLOCK 45 PASEO / POCKET PARK ENLARGEMENT / LIGHTING PLAN

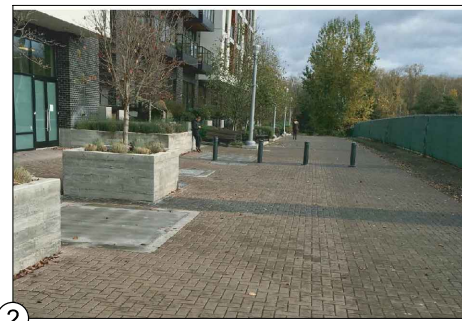


## LIGHTING LEGEND

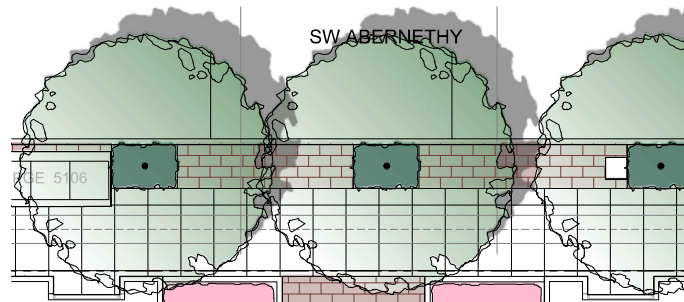
- R.O.W. STREET LIGHTING- REFERENCE CIVIL DRAWINGS FOR SPECIFICATIONS
- LIGHT BOLLARD- FERRARA 900 LED LIGHT BOLLARD



1 R.O.W. STREET LIGHT



2 ENRICHED PAVEMENT AND FORM LINED PLANTERS



4 BENCH SEATING  
30" HT. PLANTER

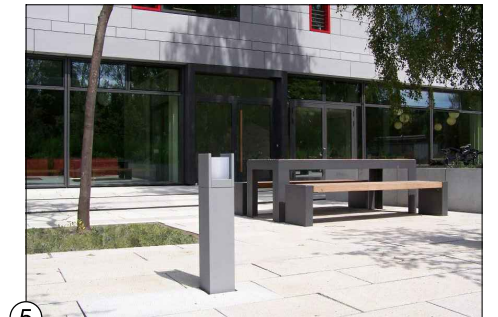
2 CONCRETE PAVERS  
TABLES AND CHAIRS



3 AT GRADE POP FOUNTAIN



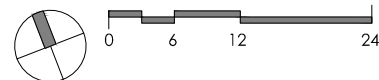
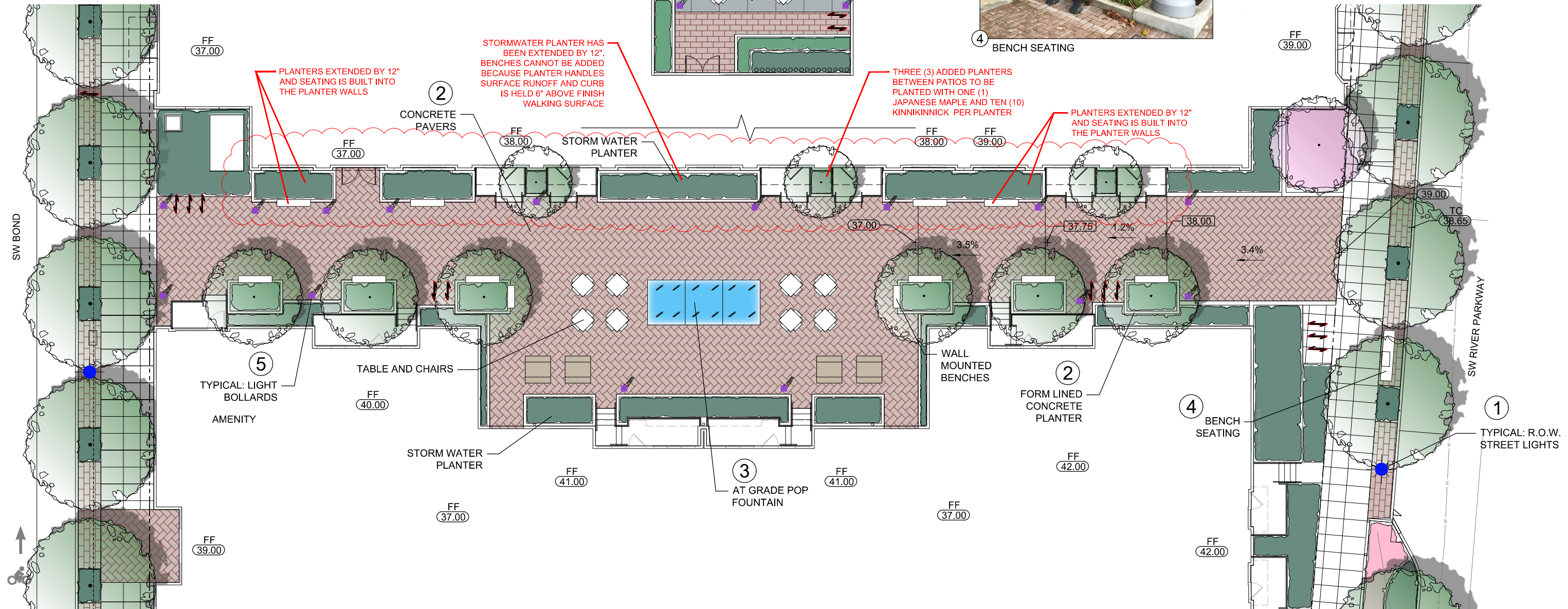
4 BENCH SEATING



5 LIGHT BOLLARD- FERRARA 900 LED LIGHT BOLLARD

45.00 - DENOTES CIVIL ENGINEER GRADES

42.00 - DENOTES LANDSCAPE ARCHITECT GRADES



## BLOCK 45 PASEO / POCKET PARK ENLARGEMENT / LIGHTING PLAN

LAND USE REVIEW # (LU-20-102914 DZM GW) EXHIBIT C.238