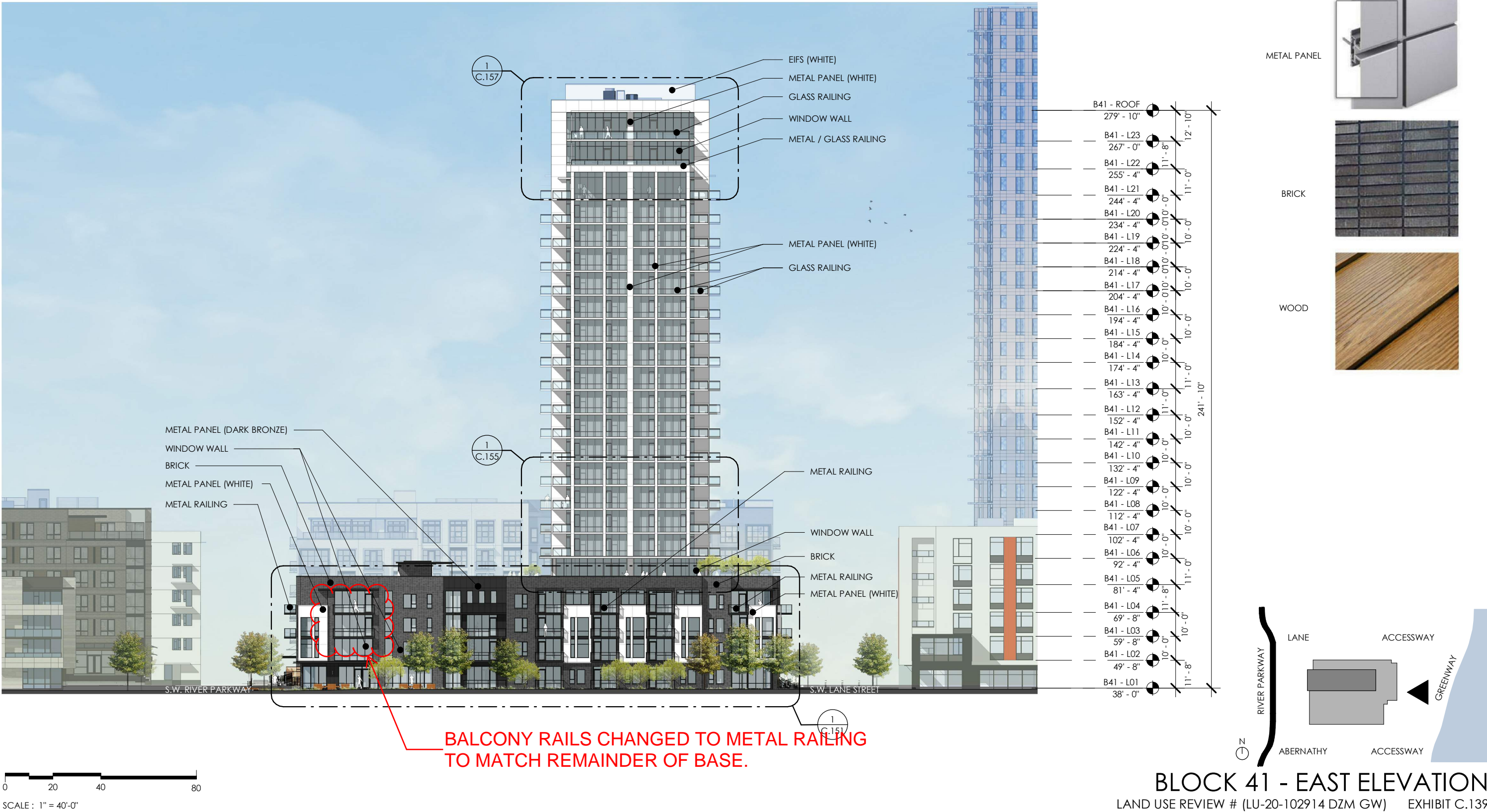


LEVEL 1: CANOPY SOFFITS AND PRIVACY SCREENS
ABOVE LEVEL 1: WALLS OF LEVEL 3 & 4; SOFFIT AT LEVEL 23

© 2020 WDG ARCHITECTURE (RIVER BLOCKS 41 & 44)



LEVEL 1: CANOPY SOFFITS AND PRIVACY SCREENS
ABOVE LEVEL 1: WALLS OF LEVEL 3 & 4; SOFFIT AT LEVEL 23

© 2020 WDG ARCHITECTURE (RIVER BLOCKS 41 & 44)

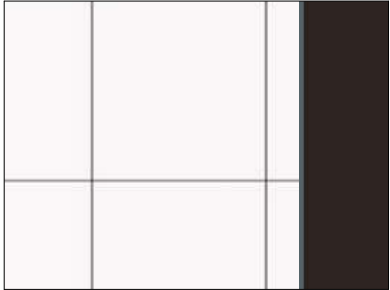


0 20 40 80
SCALE : 1" = 40'-0"

BLOCK 41 - NORTH ELEVATION
LAND USE REVIEW # (LU-20-102914 DZM GW) EXHIBIT C.140

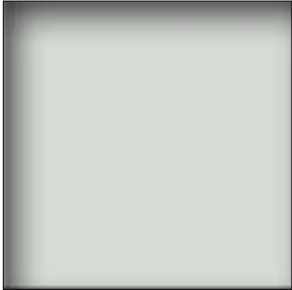
METAL PANEL

MONOLITHIC 14 GAUGE ALUMINUM
TOWER COLOR: WHITE; SW 7757
BASE (@ NON-BRICK) COLORS:
DARK BRONZE (MATCH MULLIONS)



CURTAIN WALL

FINISH: PAINTED
TOWER COLOR: WHITE
RETAIL & BASE COLOR: ANODIZED
DARK BRONZE
GLASS: ULTRA CLEAR



BRICK

STYLE: STACKED
NOMINAL SIZE: 2 1/4" X 12"
COLOR: COAL CREEK



WINDOW WALL

TOWER COLOR: WHITE
BASE COLOR: BLACK
GLASS: GREY/GREEN HUE
SPANDREL: INSULATED UNIT WITH LIGHT
GREY COLOR ON 4TH PANE



WOOD

APPLICATIONS: SOFFITS
CLADDING
FINISH: STAINED
TONGUE AND GROOVE



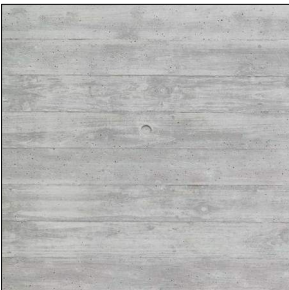
RAILINGS

STYLES: CABLE RAILING
METAL & GLASS RAILING



CONCRETE

APPLICATIONS: BUILDING BASE
EXPOSED COLUMNS



ARCHITECTURAL
LOUVERS

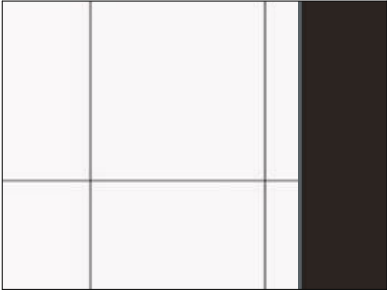
FINISH: ANNODIZED OR PAINTED
COLOR: TO MATCH ADJACENT
METAL PANEL OR MULLION COLOR



© 2020 WDG ARCHITECTURE (RIVER BLOCKS 41 & 44)

METAL PANEL

MONOLITHIC 14 GAUGE ALUMINUM
TOWER COLOR: WHITE; SW 7757
BASE (@ NON-BRICK) COLORS:
DARK BRONZE (MATCH CURTAIN WALL)
BLACK (MATCH WINDOW WALL)



BRICK

STYLE: STACKED
NOMINAL SIZE: 2 1/2" X 12"
COLOR: COAL CREEK

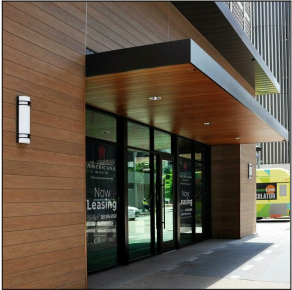


WOOD

APPLICATIONS: 1ST FLOOR CANOPY
SOFFITS AND PRIVACY SCREENS.
TYPE: STAINED DOUGLAS FIR
FINISH: STAINED
TONGUE AND GROOVE
APPLICATIONS: WALLS AND SOFFITS
ABOVE 1ST FLOOR.
TYPE: OPT A: WOOD TEXTURE ALUMINUM
OPT B: CUSTOM COLOR ALUMINUM
FINISH: (MORE DETAIL ON C.165)



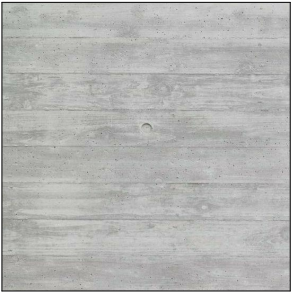
STAINED DOUGLAS FIR



WOOD TEXTURE ALUMINUM
OAK / WIDE GRAIN COMBO

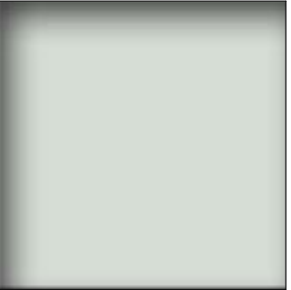
CONCRETE

APPLICATIONS: BUILDING BASE
EXPOSED COLUMNS



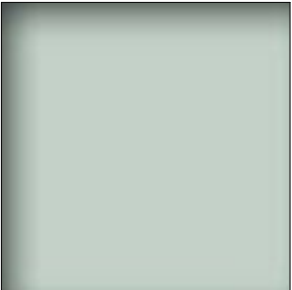
CURTAIN WALL

FINISH: PAINTED
TOWER COLOR: WHITE
RETAIL & BASE COLOR: ANODIZED
DARK BRONZE
GLASS: ULTRA CLEAR



WINDOW WALL

TOWER COLOR: WHITE
BASE COLOR: BLACK
GLASS: GREY/GREEN HUE
SPANDREL: INSULATED UNIT WITH LIGHT
GREY COLOR ON 4TH PANE



RAILINGS

STYLES: CABLE RAILING
METAL & GLASS RAILING



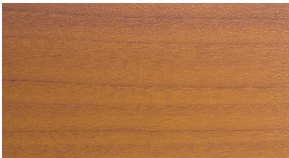
ARCHITECTUAL
LOUVERS

FINISH: ANNODIZED OR PAINTED
COLOR: TO MATCH ADJACENT
METAL PANEL OR MULLION COLOR

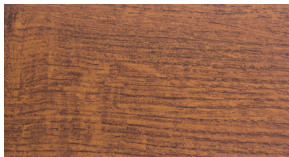


© 2020 WDG ARCHITECTURE (RIVER BLOCKS 41 & 44)

OPTION A:
WOOD TEXTURE ALUMINUM



SUPER WIDE GRAIN.



SUPER OAK

OPTION B:
CUSTOM COLOR ALUMINUM



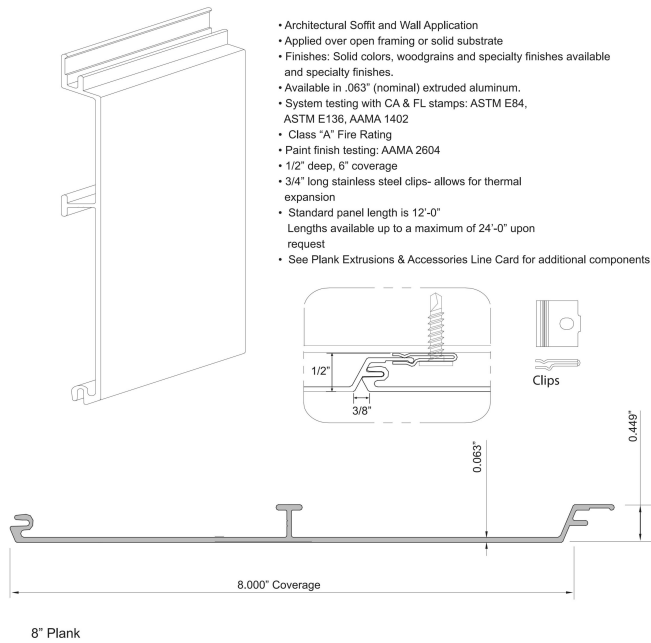
SW 6369 TASSEL



Product: **Alumaboard 8" Plank**

Product Information:

- Architectural Soffit and Wall Application
- Applied over open framing or solid substrate
- Finishes: Solid colors, woodgrains and specialty finishes available and specialty finishes.
- Available in .063" (nominal) extruded aluminum.
- System testing with CA & FL stamps: ASTM E84, ASTM E136, AAMA 1402
- Class "A" Fire Rating
- Paint finish testing: AAMA 2604
- 1/2" deep, 6" coverage
- 3/4" long stainless steel clips- allows for thermal expansion
- Standard panel length is 12'-0"
- Lengths available up to a maximum of 24'-0" upon request
- See Plank Extrusions & Accessories Line Card for additional components



Alumaboard Plank Series offers a wood look cladding option without all the maintenance. Our planks can be installed vertically and horizontally and can be used for both exterior and interior applications. Our warm woodgrains celebrate the hues of the surrounding landscape, and offer a perfect contrast to other building elements.

Alumaboard planks come in wood patterns and solid colors that stand up to the extreme weather conditions. Perfect for Siding and Soffit applications.

