



# The Southwest Corridor Light Rail Project

**Hillary Adam**  
BDS

**Teresa Boyle**  
PBOT

**Dave Unsworth**  
TriMet



# Conceptual Design Report (CDR)

Preliminary designs for:

- Overall vision
- Project benefits
- Stations
- Major structures
- Other corridor improvements
- Public engagement tool to inform future design



# Project Milestones

- Jun 2018 Draft Environmental Impact Statement (DEIS) released
- Oct 2018 Portland adopts Equitable Housing Strategy
- Nov 2018 Locally Preferred Alternative (LPA) adopted by Metro Council
- **Feb 2020 Conceptual Design Report (CDR) published**
- Summer 2020 Final Environmental Impact Statement (FEIS) released
- Nov 2020 Metro Regional Funding Measure on ballot

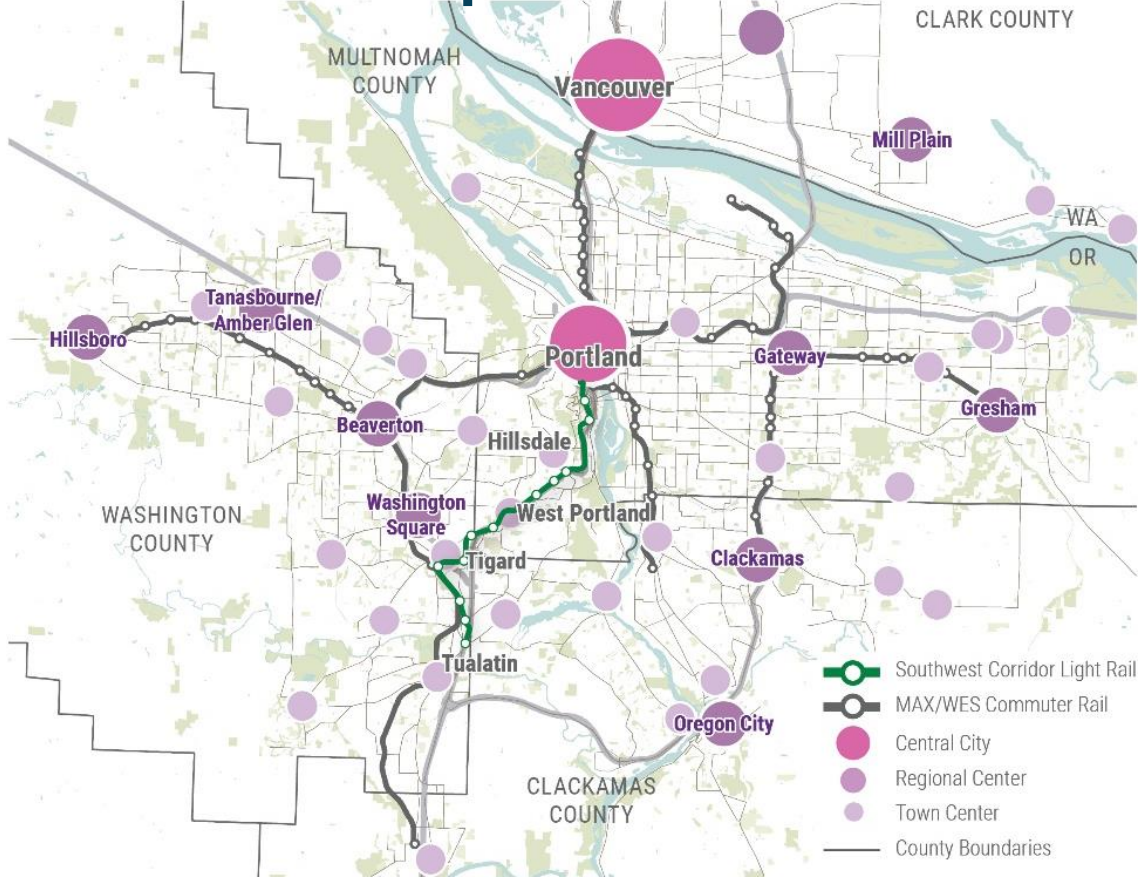
# Previous Landmark Feedback

## PHLC DEIS Letter – July 30, 2018

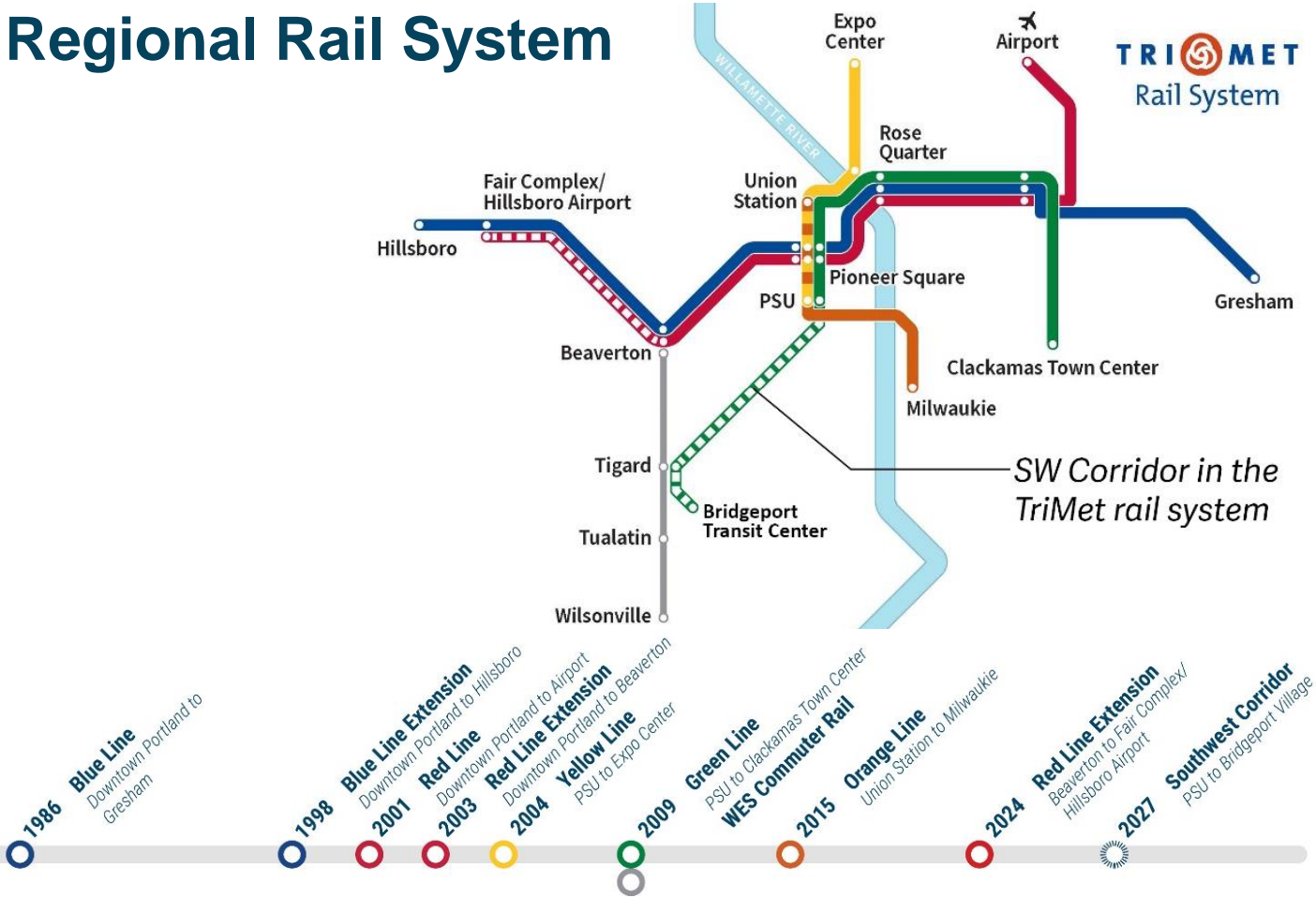
### Key Points

- Segment A - Barbur alignment has fewest historic impacts
- Concern for Jewish shelter home
- Segment B - Alignment B4 has fewest historic impacts
- Interested in providing input on Section 106 mitigations

# Regional Growth Concept



# Regional Rail System



# ROUTE AND STATION LOCATIONS

PREFERRED ALTERNATIVE UPDATED MARCH 2019

Conceptual rendering subject to change



**13**  
stations

**30 min**  
Bridgeport Village  
To Downtown Portland

**37,500**  
trips per day by 2035

# Project Principles





# More than light rail...



**10 miles**

of new sidewalks



**6 miles**

of improved bike facilities



**1.6 miles**

of shared transitway



**2,000**

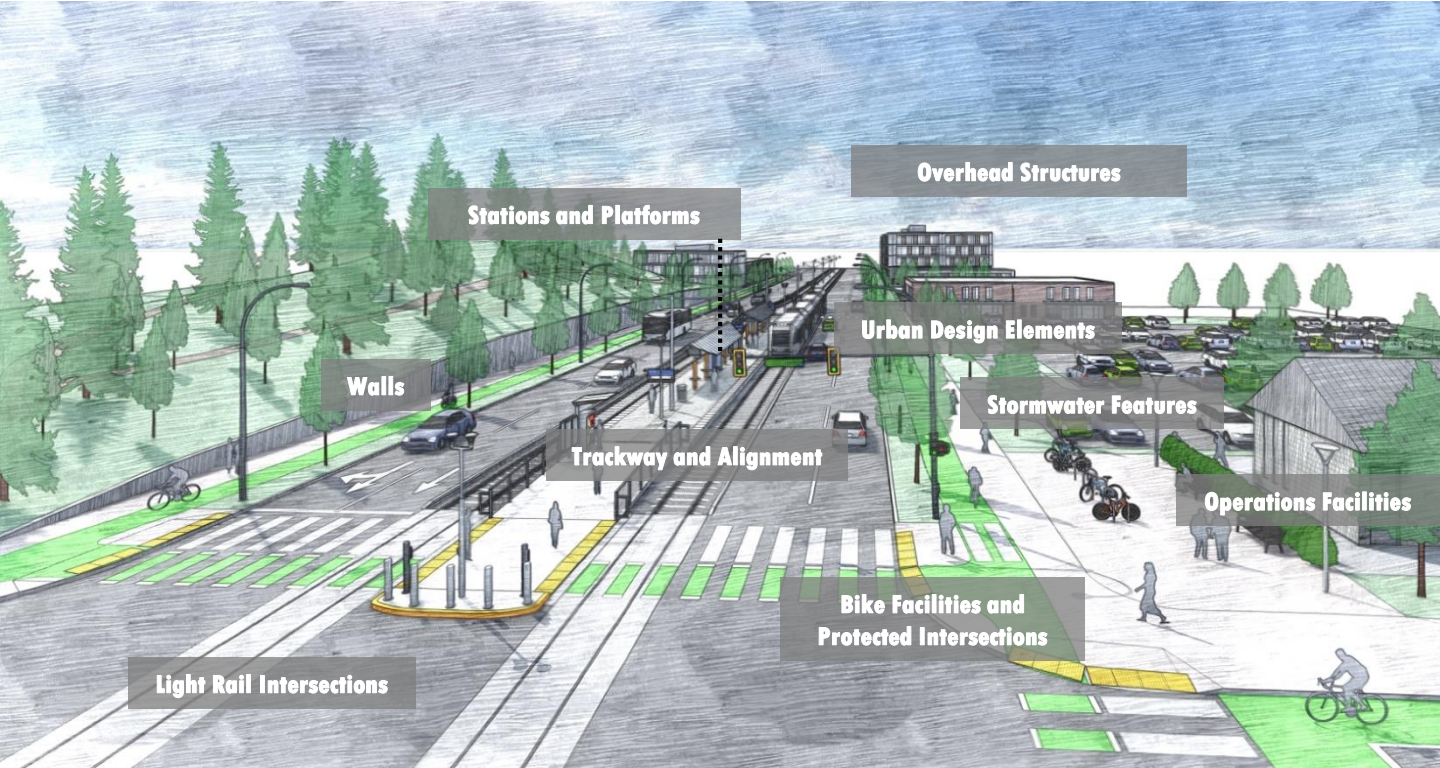
Park & Ride spaces

# Existing Conditions



SW Barbur Blvd

# Future Vision



Stations and Platforms

Overhead Structures

Walls

Urban Design Elements

Trackway and Alignment

Stormwater Features

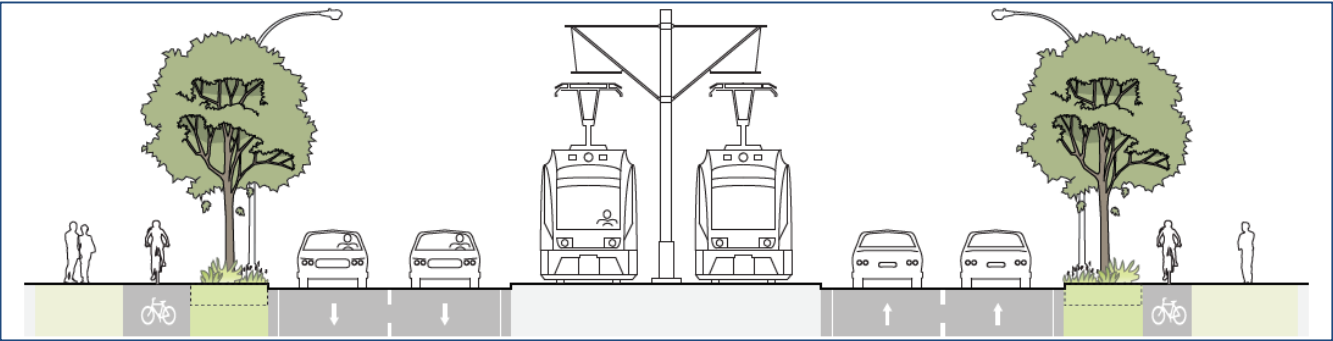
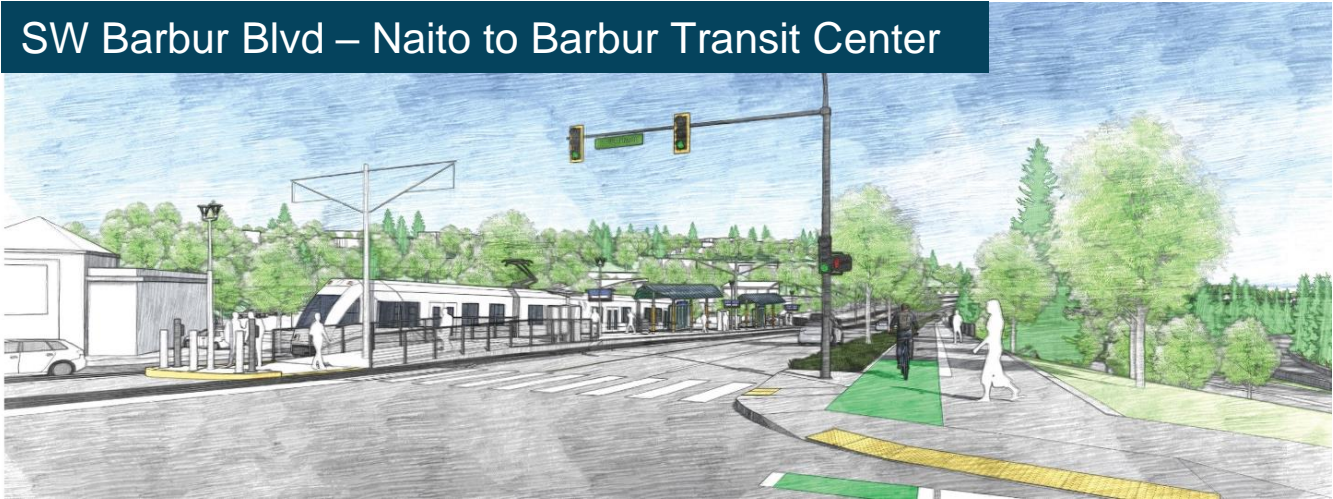
Operations Facilities

Light Rail Intersections

Bike Facilities and Protected Intersections

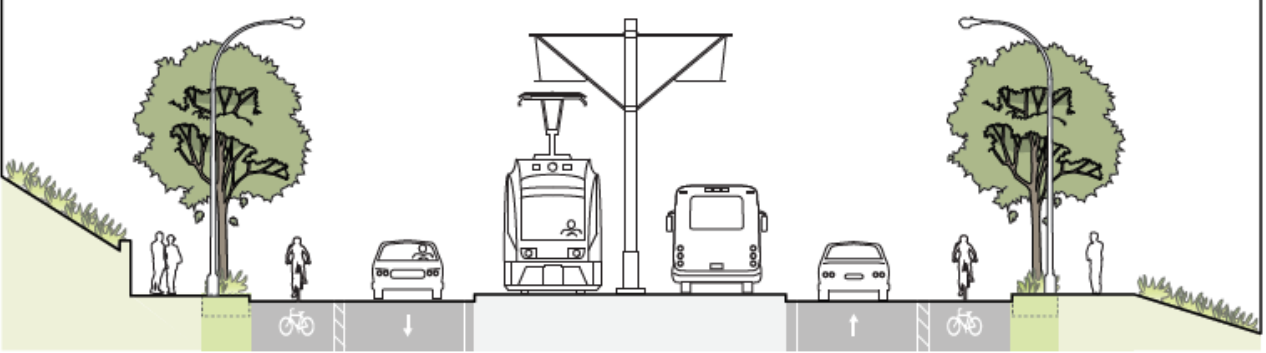
# Streetscape Improvements

SW Barbur Blvd – Naito to Barbur Transit Center



# Streetscape Improvements

SW Barbur Blvd – North of Naito



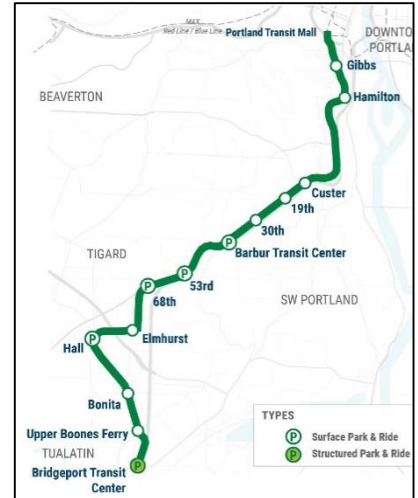
# Station Access



**Walking  
Biking**

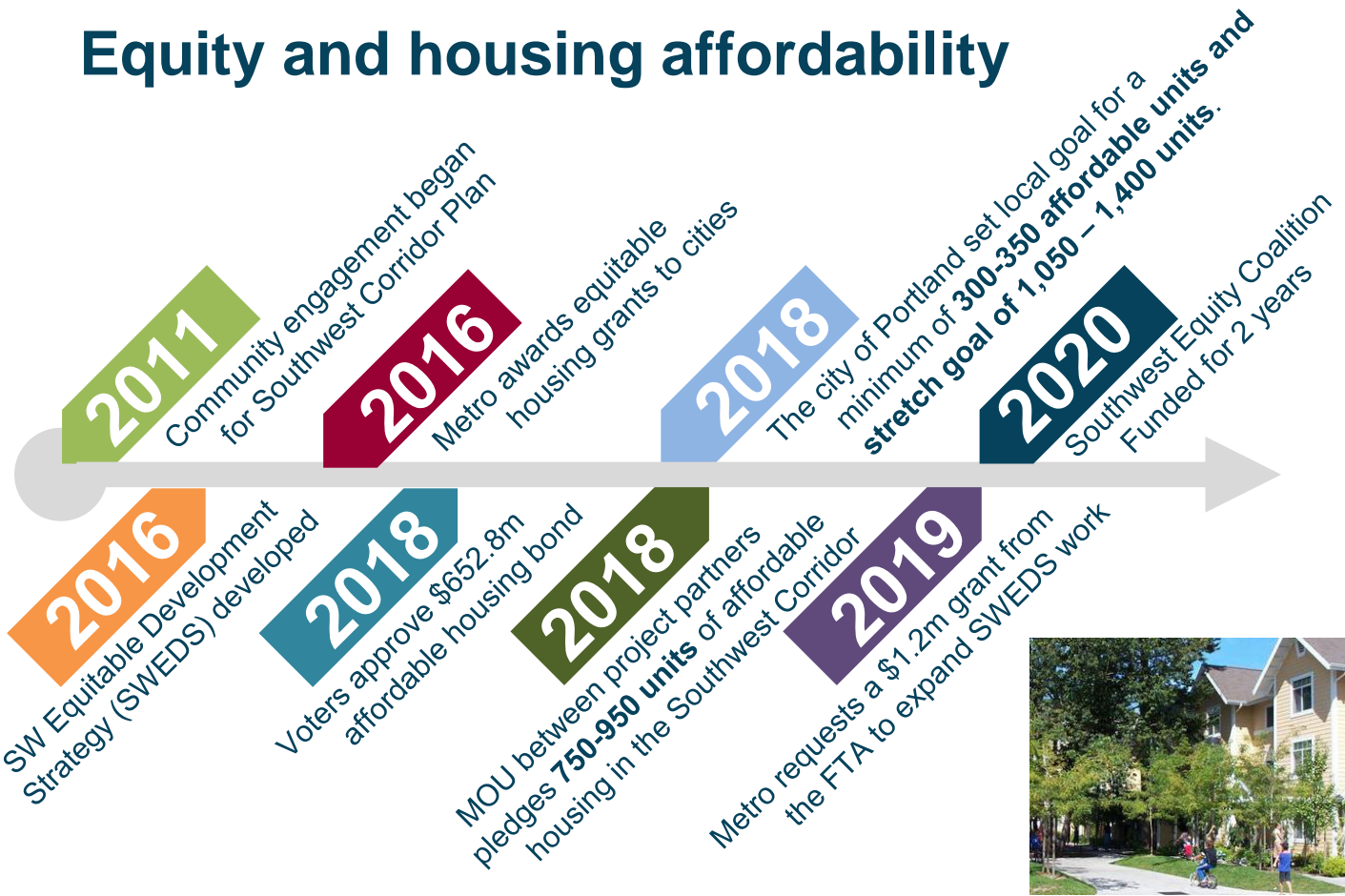


**Bus Transfers**

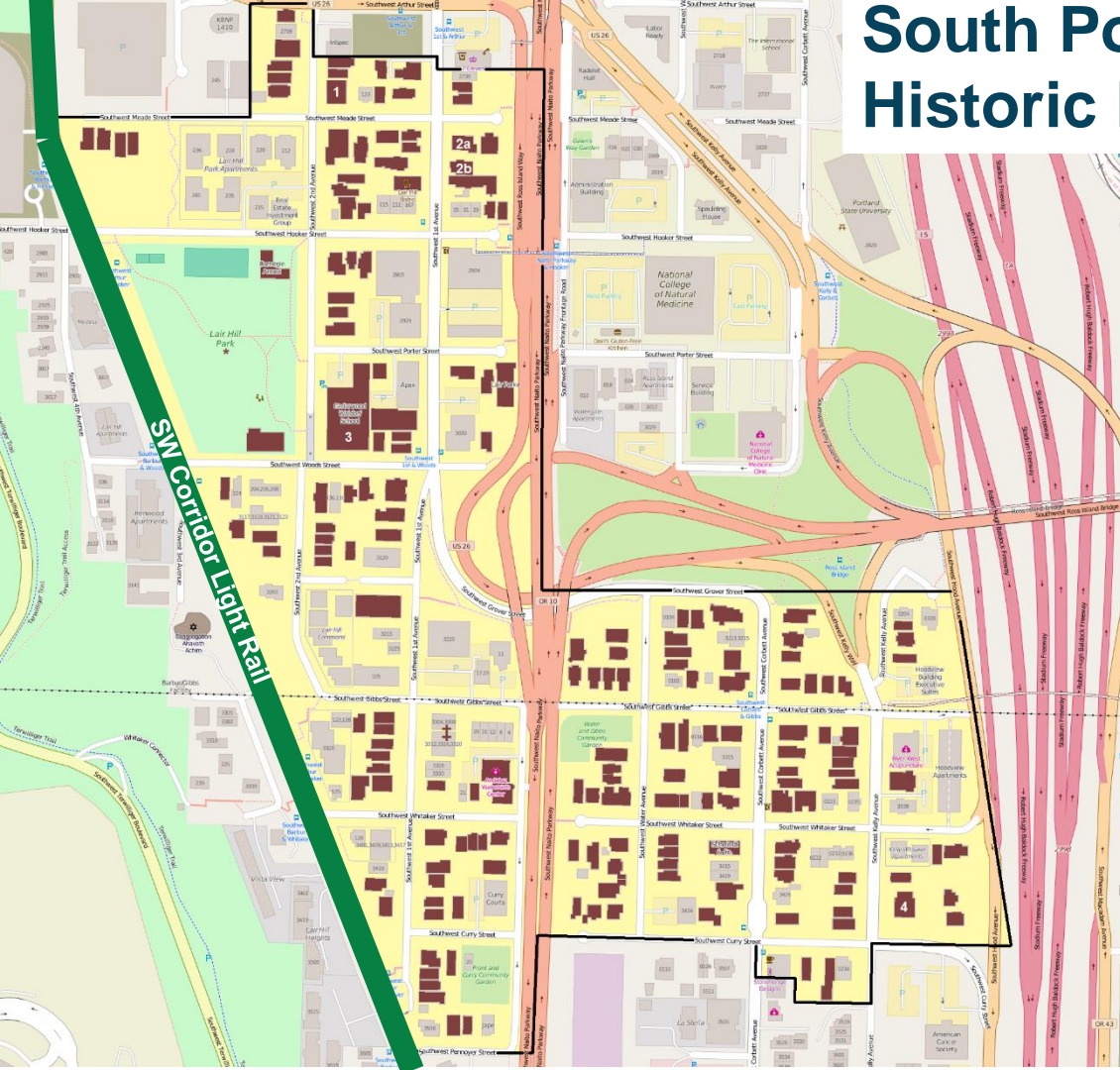


**Pick-up/Drop-off  
Park & Rides**

# Equity and housing affordability



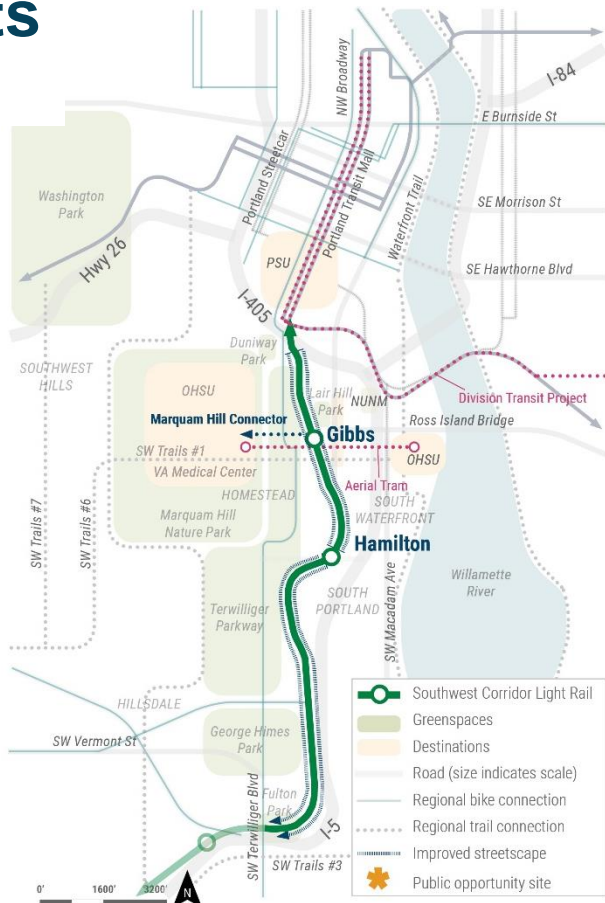
# South Portland Historic District





# Station Design Concepts

## Inner Portland



# Inner Portland Gibbs Street Station





# Marquam Hill Connector

# 2019 Public Process

Feb – June 2019	Green Ribbon Committee
Feb – June 2019	Stakeholder Working Group
April 2019	Public Open House and Online Survey



# Section 4(f) Process

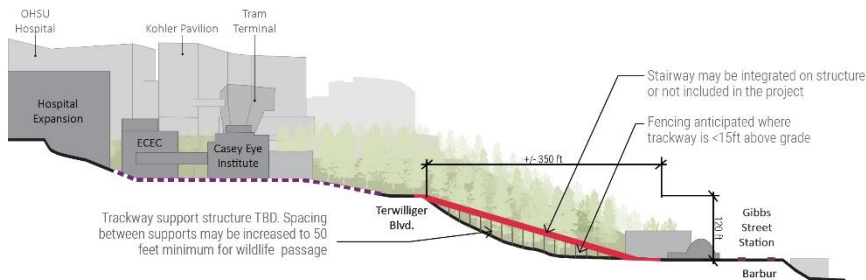
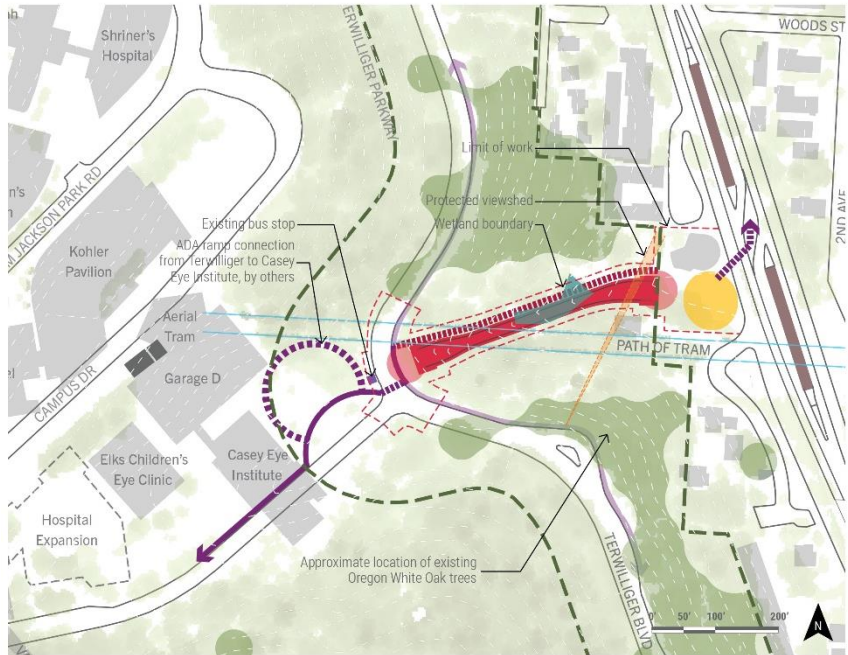
- Special evaluation for adverse impacts to parks or historic resources
  - Terwilliger Parkway is both
- In consultation with Portland Parks & Recreation and the State Historic Preservation Office on options, impacts, and mitigations



# Inclined Elevator



- █ Inclined Elevators Alignment
- Inclined Elevators Landing
- █ Integrated Stairs
- █ Path of Pedestrian Travel
- █ Existing Path of Pedestrian Travel
- █ Platform
- Plaza



# Inclined Elevator



*View looking uphill from Barbur Blvd to Terwilliger Blvd*



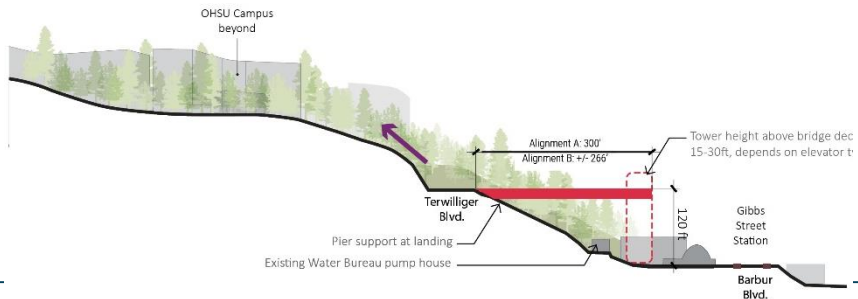
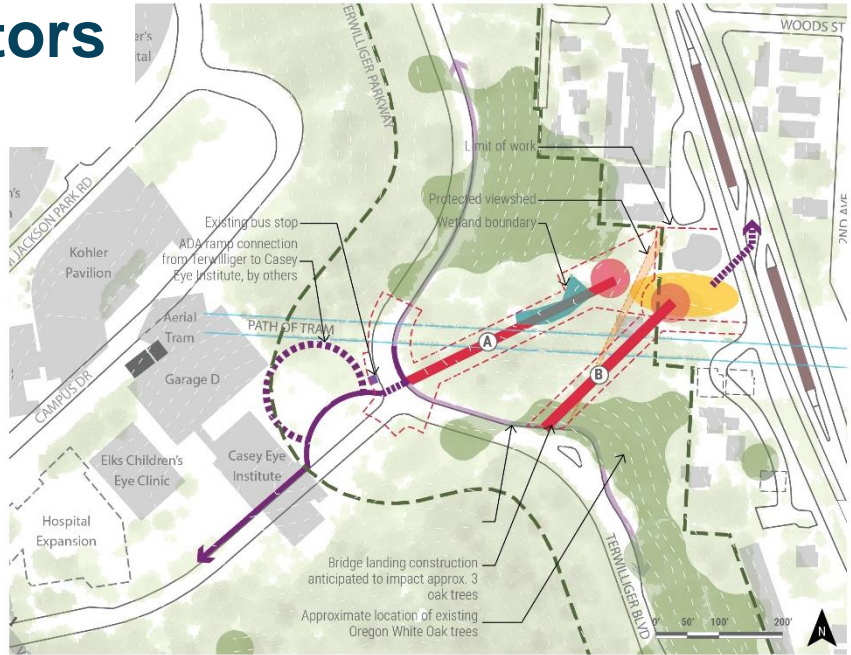
*View looking downhill from Terwilliger Blvd to Barbur Blvd*

# Bridge and Elevators

## Two Alignments



- Bridge and Elevators Alignment
- Bridge and Elevators Landing
- Integrated Stairs
- Path of Pedestrian Travel
- Existing Path of Pedestrian Travel
- Platform
- Plaza





# Bridge and Elevators

## Alignment A



View looking uphill from Barbur Blvd to Terwilliger Blvd



View looking downhill from Terwilliger Blvd to Barbur Blvd

# Bridge and Elevators

## Alignment B

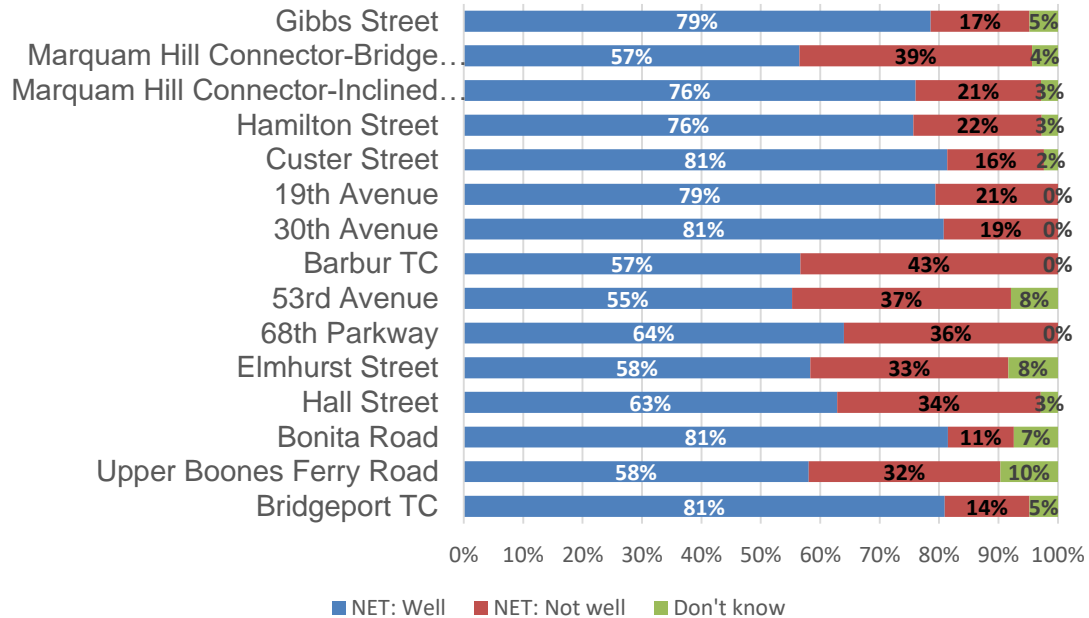


View looking uphill from Barbur Blvd to Terwilliger Blvd



View looking downhill from Terwilliger Blvd to Barbur Blvd

# 2020 Community Feedback



604 ratings as of February 26

[trimet.org/swcorridor](https://trimet.org/swcorridor)

# Introduction to Section 4(f) and Section 106 Process



# Section 106 Review Process

36 CFR § 800.3-7

C  
O  
N  
S  
U  
L  
T  
A  
T  
I  
O  
N



## INITIATE the process

- Determine undertaking
- Coordinate with other reviews
- Identify SHPO/THPO, Indian tribes/NHOs, and other parties
- Plan to involve the public

*No undertaking with potential to affect historic properties?*

NO



## IDENTIFY historic properties

- Determine APE and scope of effort
- Make reasonable and good faith effort to identify
- Determine National Register eligibility
- Consult SHPO/THPO, Indian tribes/NHOs, and other parties
- Involve the public

*No historic properties present or affected?*

NO



## ASSESS adverse effects

- Apply Criteria of Adverse Effects
- Consult SHPO/THPO, Indian tribes/NHOs, and other parties
- Involve the public

*No historic properties adversely affected?*

NO



## RESOLVE adverse effects

- Develop and consider alternatives or modifications to avoid, minimize, or mitigate adverse effects
- Notify the ACHP
- Consult SHPO/THPO, Indian tribes/NHOs, and other parties
- Involve the public

*AGREEMENT or Council Comment*

## PROCEED



**Property Types**

Buildings • Structures • Objects • Sites • Districts

**Eligibility = Significance + Integrity**

**36 CFR § 60.4**

**Criteria for Evaluation  
(Significance)**

**A. Event**

Associated with events that have made a significant contribution to the broad patterns of our history.

**B. Person**

Associated with the lives of significant persons in our past.

**C. Design/Construction**

Embody the distinctive characteristics of a type, period, or method of construction, or that represent the work of a master, or that possess high artistic values, or that represent a significant and distinguishable entity whose components may lack individual distinction.

**D. Information Potential**

Has yielded or may be likely to yield information important in history or prehistory.

**Aspects of Integrity**

setting **MATERIALS**  
**LOCATION**  
Workmanship **design**  
feeling **Association**

**Measure Change from  
Present Condition**

**36 CFR § 800.5(a)(1)**

**Criteria of Adverse Effect**

An ADVERSE EFFECT is found when an undertaking may alter, directly or indirectly, any of the characteristics of a historic property that qualify the property for inclusion in the National Register in a manner that would diminish the property's integrity.

ADVERSE EFFECTS may include reasonably foreseeable effects caused by the undertaking that may occur later in time, be farther removed in distance, or be cumulative.

**36 CFR § 800.5(a)(2)**

**Examples of Adverse Effects**

- Destruction or Damage of all or part of historic property
- Alteration not consistent with SOI Standards
  - Removal from its Location
  - Change in Use or Setting
- Addition of Visual, Audible, or Atmospheric Elements out of Character
- Neglect (when not an expected characteristic)
- Transfer, Sale, or Lease out of Federal Control

# Determination of Eligibility Finding of Effect

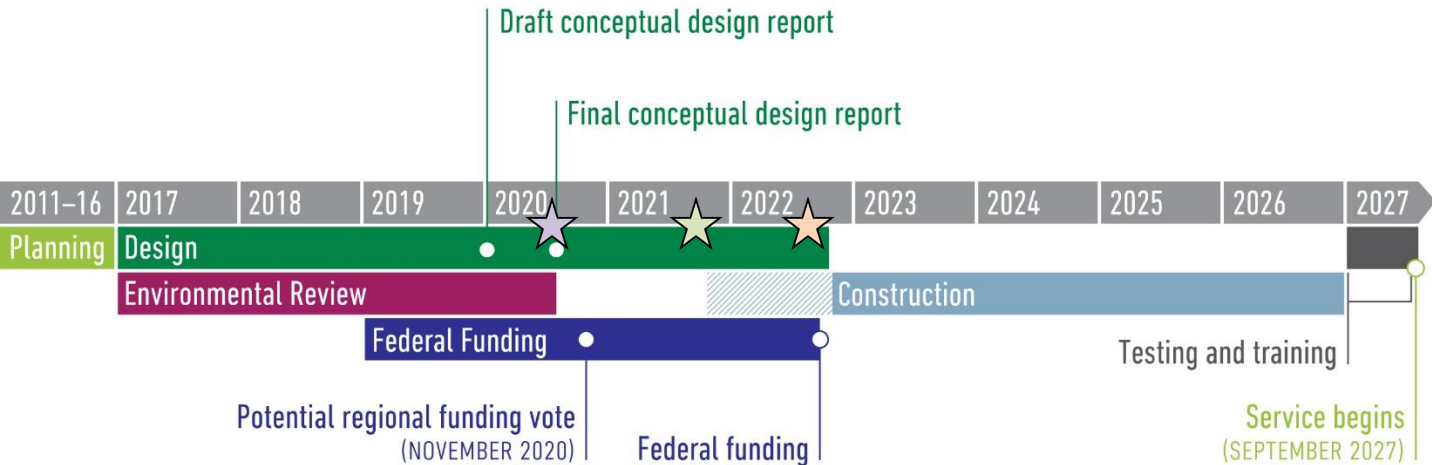
- 67 properties had determination of eligibility and Finding of effect analyzed
- Draft until SHPO confirms
- 11 potentially adverse effects

# Preview of June 22<sup>nd</sup> Landmarks Commission Meeting

- Review properties
- Discuss findings of effect
- Review and seek comment on proposed mitigation in the Memorandum of agreement



# Project Timeline



## Land Use Actions

★ 30% Design  
Fall 2020

★ 60% Design  
Late 2021

★ 90% Design  
Late 2022

# Work Program – What's Next?

June 22	Landmarks Commission briefing/advice on Section 106 and Memorandum of Agreement
November 3	Regional Funding Measure
Winter 2020/2021	Landmarks Commission Land Use Actions

# Questions? Comments?

[trimet.org/swcorridor](http://trimet.org/swcorridor)



# SW Naito Main Street Project - Ross Island Bridgehead



*Naito and Woods facing southeast*

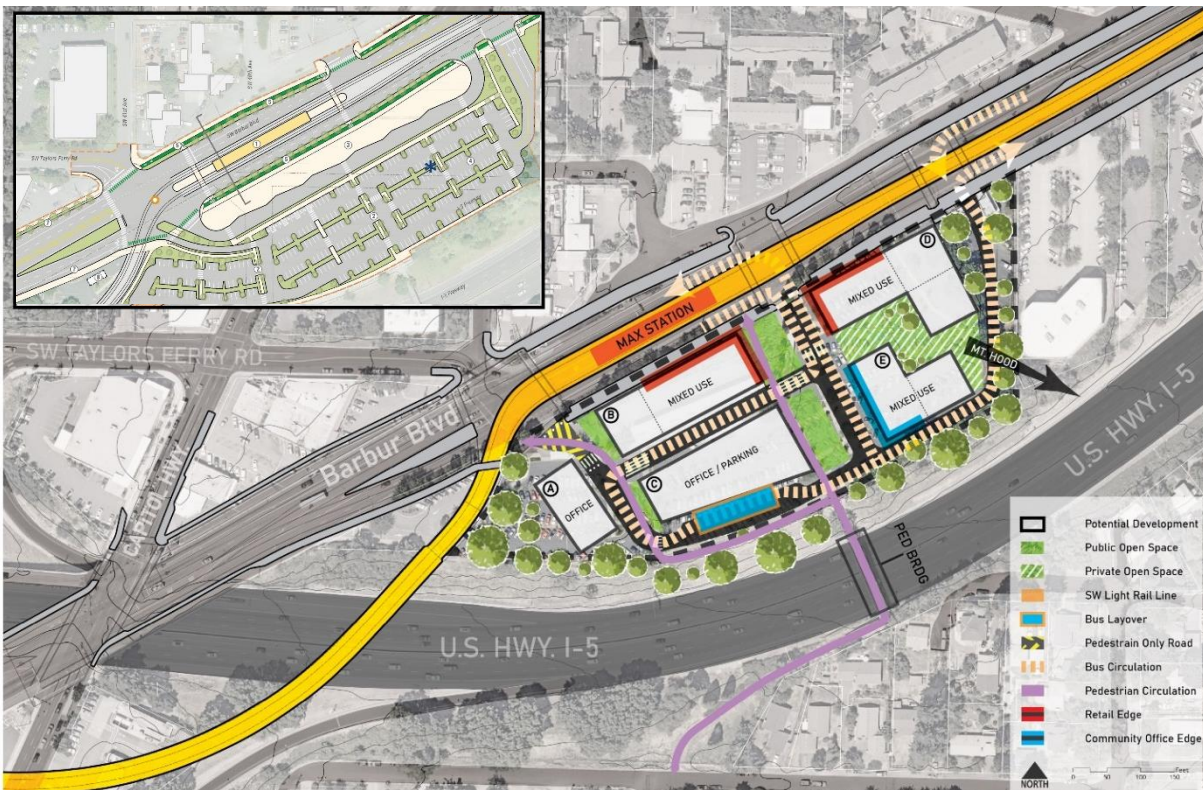


*1st Ave and Woods facing east*



# West Portland Town Center

## Barbur Transit Center Opportunity Site



- Potential Development
- Public Open Space
- Private Open Space
- SW Light Rail Line
- Bus Layover
- Pedestrian Only Road
- Bus Circulation
- Pedestrian Circulation
- Retail Edge
- Community Office Edge

# Inner Portland Viaducts

