

EXHIBIT A
FIGURE 6 - Chapter 17.102
 (Replaced by Ordinance No. **XXXXXX**
 effective July 1, 2019.)

Residential Solid Waste and Recycling Rates

As used in Figure 6 the following terms have the meanings described below:

"Excess distance" is applicable to any collection beyond seventy-five (75) feet from the curb. This charge is in addition to the "non-curb surcharge."

"Clean up containers" include hauler-provided containers which are provided as requested by the customer for occasional or temporary use.

"Small multiplex" refers to any multidwelling building or a combination of buildings on a single tax lot in the residential franchise territory that contains 2-4 dwelling units.

"Non-curb surcharge" is the charge for collection service provided at a location more distant than curbside.

"Terrain differential" is applicable to services within the territory designated on Figure 6-1.

Residential Curbside Collection Service Rates and Charges				
Single Family Service Level	Monthly Rate Curbside Pickup	Per Unit or Per Pickup	Non-Curb Surcharge	Excess Distance
Standard Service - Service includes weekly collection of composting & recycling, every-other-week garbage				
20-gallon Can*	27.90		2.10	0.70
32-gallon Can*	32.55		2.10	0.70
20-gallon Rollcart	27.90			
35-gallon Rollcart	32.55			
60-gallon Rollcart	37.85			
90-gallon Rollcart	43.15			
1.0 Cubic Yard Container	88.45			
1.5 Cubic Yard Container	120.30			
2.0 Cubic Yard Container	152.05			
Every-four-weeks Service - Service includes weekly collection of composting & recycling, every-four-weeks garbage				
32-gallon Can*	25.00		1.05	0.35
35-gallon Rollcart	25.00			

*Customer-provided garbage cans are being phased out and these service levels are generally not available. Customers currently providing their own garbage cans are grandfathered in.

Single Family Service Level	Monthly Rate Curbside Pickup	Per Unit or Per Pickup	Non-Curb Surcharge	Excess Distance
Special Services				
Recycling Only, Weekly Collection	11.40			
Composting & Recycling Only, Weekly Collection	21.10			
On Call Yard Debris Collection (32 gallon Can, Bag, or Bundle--Yard Debris Only)		7.45		
On Call Garbage (32-Gallon Can or Bag)		9.90	1.05	0.35
Yard Debris, Extra Can, Bag or Bundle -- Yard Debris Only		3.75		
Garbage, Extra Can or Bag		5.00	1.05	0.35
Courtesy Callback (Garbage or Composting)		9.70		
Rollcart Delivery**		13.75		
Extra Composting Rollcart	14.10			
Extra Recycling Rollcart	6.00			
Holiday Tree Removal		5.00		
Multiple Cans / Rollcarts -- Service includes weekly collection of composting & recycling, every-other-week garbage				
32-Gallon Cans, Two*	42.40		4.20	1.40
32-Gallon Cans, Three*	48.55		6.30	2.10
32-Gallon Cans, Four*	53.10		8.40	2.80
35-Gallon Rollcart, Two	41.65			
35-Gallon Rollcart, Three	49.20			
35-Gallon Rollcart, Four	56.75			
60-Gallon Rollcart, Two	48.75			
60-Gallon Rollcart, Three	59.05			
60-Gallon Rollcart, Four	69.35			
90-Gallon Rollcart, Two	56.95			
90-Gallon Rollcart, Three	68.95			
90-Gallon Rollcart, Four	80.90			

*Customer-provided garbage cans are being phased out and these service levels are generally not available. Customers currently providing their own garbage cans are grandfathered in.

**Rollcart delivery fees may be charged in the following scenarios:

1. For composting and recycling, if it is the customer's second (or greater) rollcart delivery.
2. For garbage, if it is the customer's second (or greater) rollcart delivery within a one year period.
3. Any time the customer requests a clean rollcart.

Service Level	Monthly Rate Curbside Pickup	Per Unit or Per Pickup	Non-Curb Surcharge	Excess Distance
Clean-Up Containers				
One 1.0 Cubic Yard		93.30		
One 1.5 Cubic Yard		102.00		
One 2.0 Cubic Yard		110.60		
Terrain Differential				
Every-Other-Week Garbage (Single Can / Rollcart)	4.35			
Every-Other-Week Garbage (Multiple Cans / Rollcarts)	4.50			
Every-Four-Weeks Garbage	3.00			
Recycling Only	1.50			
Compost & Recycling Only	2.85			
32-Gallon Can On-Call	0.80			
On Call Yard Debris Collection (32 gallon Can, Bag, or Bundle -- Yard Debris Only)	0.50			

Curbside Collection Service Rates and Charges for Small Multiplexes

Weekly composting & recycling, every-other-week garbage			
Collection for:	Duplex	Tri-Plex	Four-Plex
Single Container Service, where rollcart / container is shared by residents of 2, 3 or 4 units			
One shared 60-Gallon Rollcart	44.45	53.35	N / A
One shared 90-Gallon Rollcart	47.95	56.85	65.75
One shared 1.0 Cubic Yard Container	74.15	83.05	91.95
One shared 1.5 Cubic Yard Container	92.05	100.95	109.85
One shared 2.0 Cubic Yard Container	109.85	118.75	127.65
Multiple Containers, where all cans / rollcarts are placed together in a single location at curbside for pickup. Where unshared cans / rollcarts are located separately at curbside for pickup then each is considered a separate account, charged at single-family rate.			
Two 32-Gallon Cans*	45.00	53.90	N / A
Three 32-Gallon Cans*	49.30	58.20	67.10
Four 32-Gallon Cans*	53.55	62.45	71.35
Two 20-Gallon Rollcarts	42.85	N / A	N / A
Three 20-Gallon Rollcarts	46.05	54.95	N / A
Four 20-Gallon Rollcarts	49.25	58.15	67.05
Two 35-Gallon Rollcarts	45.95	54.85	N / A
Three 35-Gallon Rollcarts	50.70	59.60	68.50
Four 35-Gallon Rollcarts	55.50	64.40	73.30
Two 60-Gallon Rollcarts	52.40	61.30	70.20
Three 60-Gallon Rollcarts	60.40	69.30	78.20
Four 60-Gallon Rollcarts	68.35	77.25	86.15
Two 90-Gallon Rollcarts	59.45	68.35	77.25
Three 90-Gallon Rollcarts	70.95	79.85	88.75
Four 90 Gallon Rollcarts	82.50	91.40	100.30

--N/A services are not available.

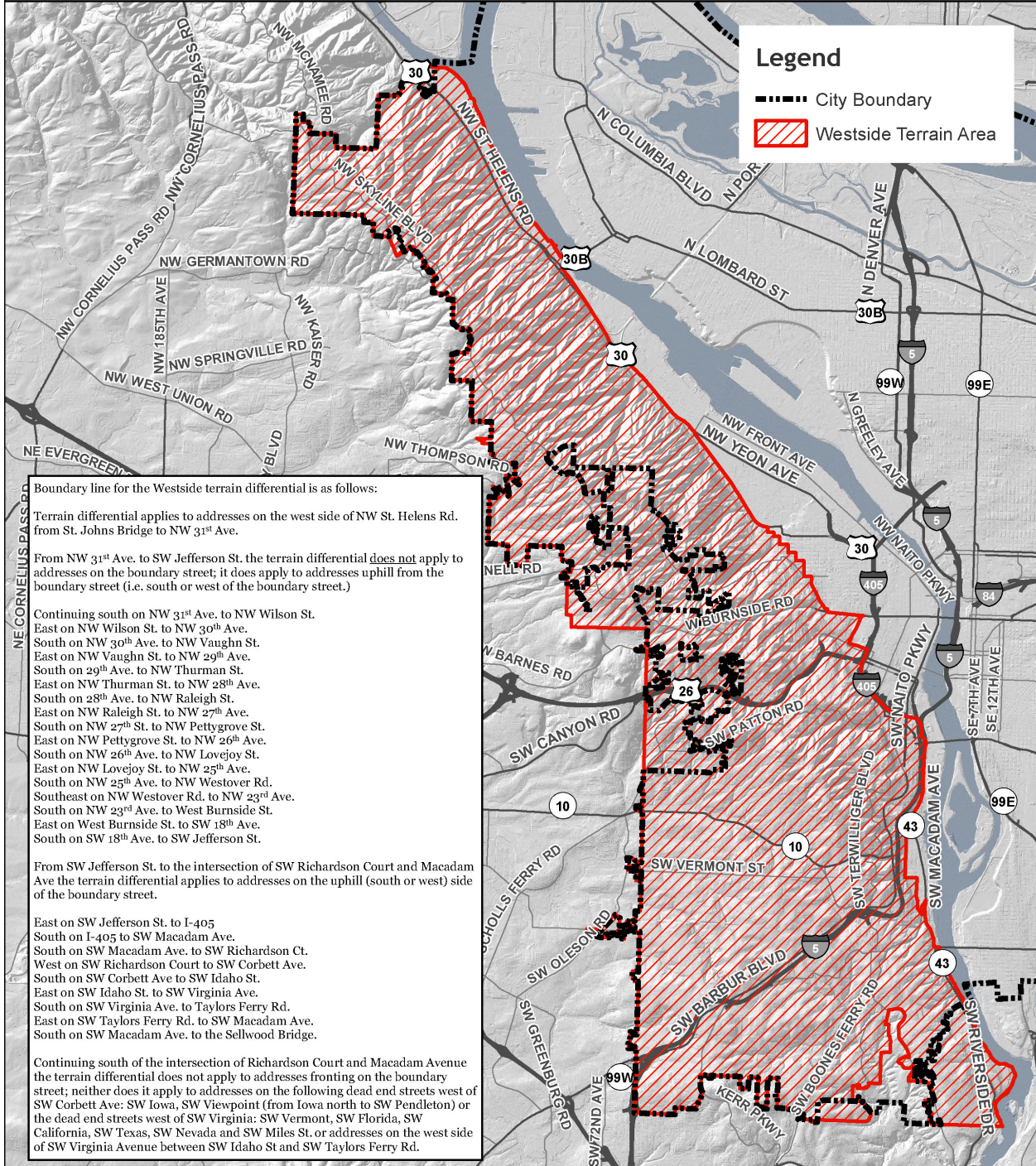
--Non-curbside service is available at small multiplexes for garbage cans and rollcarts at an additional monthly charge of \$2.10 per can and \$4.30 per rollcart. Excess distance charge for a can is \$0.70. Excess distance charge for a rollcart is \$1.40.

--For composting services, extra cans, bags, or bundles of yard debris only are \$3.75 each and accrue on a per account, rather than per unit, basis.

--Recycling labor surcharge is \$8.90 per additional dwelling unit.

*Customer-provided garbage cans are being phased out and these service levels are generally not available. Customers currently providing their own garbage cans are grandfathered in.

Westside Terrain Area



May 8, 2019
 City of Portland, Oregon | Bureau of Planning and Sustainability | Geographic Information Systems

The information on this map was derived from City of Portland GIS databases. Care was taken in the creation of this map but it is provided "as is". The City of Portland cannot accept any responsibility for error, omissions or positional accuracy.

The City of Portland ensures meaningful access to city programs, services, and activities to comply with Civil Rights Title VI and ADA Title II laws and reasonably provides: translation, interpretation, modifications, accommodations, alternative formats, auxiliary aids and services. To request these services, contact 503-823-7700, City TTY 503-823-6868, Relay Service: 711.

E:\Dropbox (BPS Tech Services)\BPS Tech Services Team Folder\gis\projects\SWR\Maps\8x11_terrain_surcharge_area_city_code_map_190508.mxd



Figure 6-1 Terrain Differential Area Map