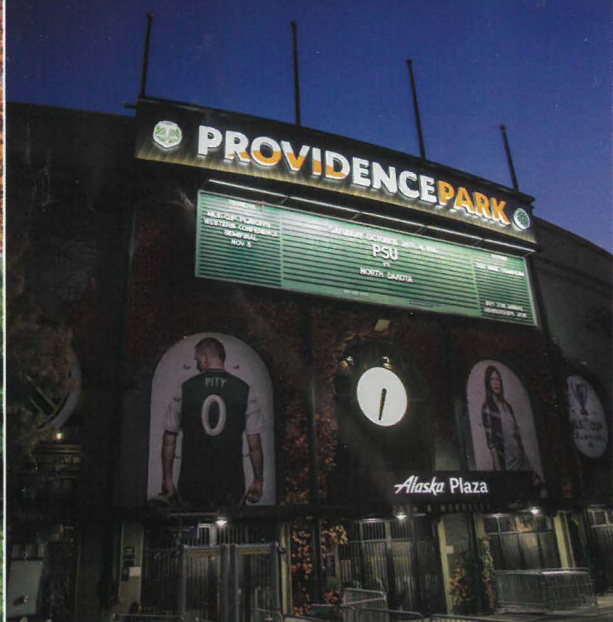


# COME EXPLORE!



The Stadium District is alive with historic architecture, vibrant businesses and busy community gathering spaces.

Closely surrounded by the neighborhoods of Goose Hollow, The Pearl and NW 23rd/Alphabet District, The Stadium District is bordered by the high-rises of downtown Portland on one side and the rolling hills of Washington Park on the other. The vibrant community streets energize on game nights...as the lights go up and crowds fill the streets with hope and excitement for the upcoming match.

## STADIUM DISTRICT BUSINESS GROUP

1125 SE Madison St, Suite 112 | Portland, OR 97214 | [stadiumdistrictpdx.biz](http://stadiumdistrictpdx.biz)

Become a member, contact us at - [membership@stadiumdistrictpdx.biz](mailto:membership@stadiumdistrictpdx.biz)



## 107 Independent Supporters Trust

The non-profit engine driving the Timbers Army and the Rose City Riveters, the 107ist supports soccer from the grassroots to the highest professional level.

The Fanladen (our clubhouse at 17th & Alder) is where we meet to plan our activities inside the stadium as well as the many things we do in the community in support of our mission.

The Fanladen is open 3.5 hours before Timbers and Thorns matches as a place to learn about our history and where we run a face-value ticket exchange that benefits the various charities we support. This is where you can get your Rose City Riveter gear ([rivetgear.myshopify.com](http://rivetgear.myshopify.com)) before and after Thorns matches. Timbers Army gear ([nopityoriginals.com](http://nopityoriginals.com)) can be found at the No Pity Van across the street on 17th before and after Timbers matches.

All proceeds go to support the efforts of our completely volunteer run organization.

Learn more at:  
**107ist.org**



CLOTHING BRAND

627 SW 19TH AVE

Tina Wysynski, Broker  
**(503) 481-6538**



Cascade | Sotheby's  
INTERNATIONAL REALTY

VANDERLOO  
**CHIROPRACTIC**  
LIFE. VITALITY. LONGEVITY. WEST

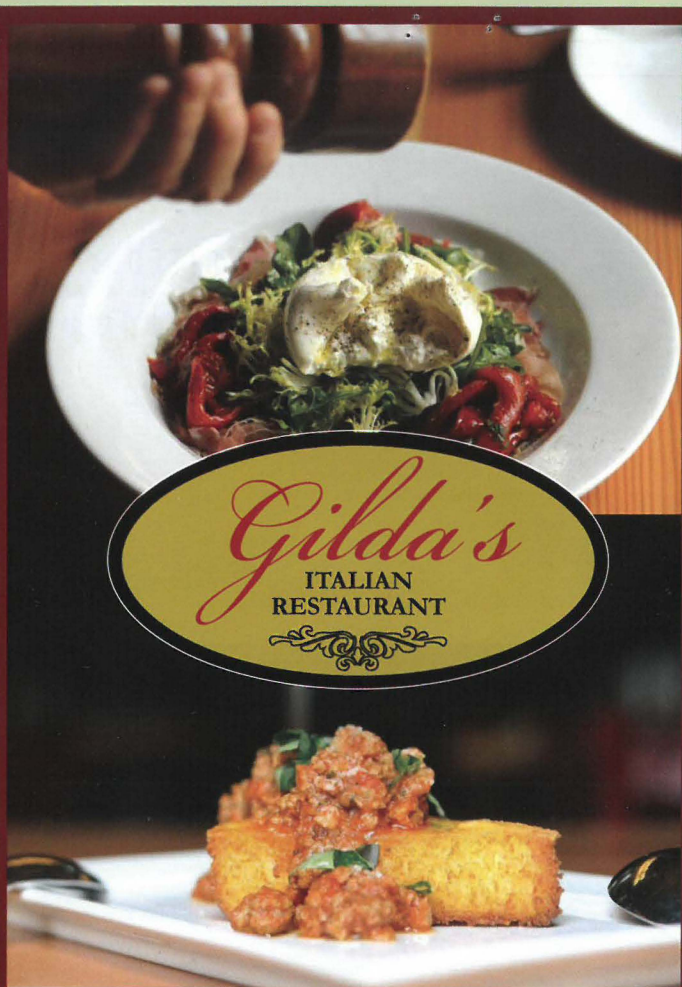
2230 W Burnside Street  
**(971) 255-1922** [vanderloochirowest.com](http://vanderloochirowest.com)

**usbank**

2000 SW Morrison Street  
**(503) 275-4850** [usbank.com](http://usbank.com)

equilibrium   
chiropractic acupuncture massage

913 SW 16th Avenue  
**(503) 228-5000** [equilibriumnw.com](http://equilibriumnw.com)



*Gilda's* Italian  
**Restaurant & Lounge**

located at 1601 SW Morrison Street

[gildasitalianrestaurant.com](http://gildasitalianrestaurant.com)  
503-688-5066

Follow us on Facebook and Instagram @gildasportland

Dinner, weekly 5 pm - 9 pm  
Lunch, Monday - Friday 11:30 am - 2 pm  
Lounge, Sunday - Thursday 4 pm - 11 pm  
Friday & Saturday 4 pm - Midnight

503-224-1755  
1250 SW 18th Ave.



20<sup>TH</sup>Place **Workshop**

Join us in this  
exciting space for  
classes, workshops  
& events

To see the schedule or  
register, please visit:

[www.fredmeyer.com/fmclasses](http://www.fredmeyer.com/fmclasses)

**Questions?  
Contact us at:**

100 NW 20th Place | 503.721.4141

PROUD  
to work in the  
**STADIUM DISTRICT**

**PROVIDENCE PARK**

THORNS  
OCTOBER  
WINCOVERS  
PORTLAND THORNS  
2017 NWSL  
CHAMPIONS



SW 17<sup>th</sup> AV

1705



- INTEGRITY
- EXCELLENCE
- INNOVATION
- RELATIONSHIPS



Morrison Bridgehead Blocks, a MMDC Development

**Goose hollow Inn**  
1927 SW Jefferson PORTLAND, OR



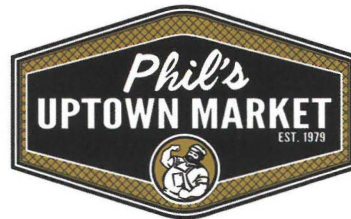
**BEST REUBEN ON THE PLANET**

(503) 228-7010 / [www.goosehollowinn.com](http://www.goosehollowinn.com)

*Serving the Pacific Northwest for over 60 years*

**epb&b**  
**insurance**  
Elliott, Powell, Baden & Baker, Inc.

503-227-1771  
[epbb.com](http://epbb.com)



BUTCHER SHOP  
DELICATESSEN  
BENTO  
WINE CELLAR

**503-224-9541**  
[philsmeatmarket.com](http://philsmeatmarket.com)  
17 NW 23rd Place

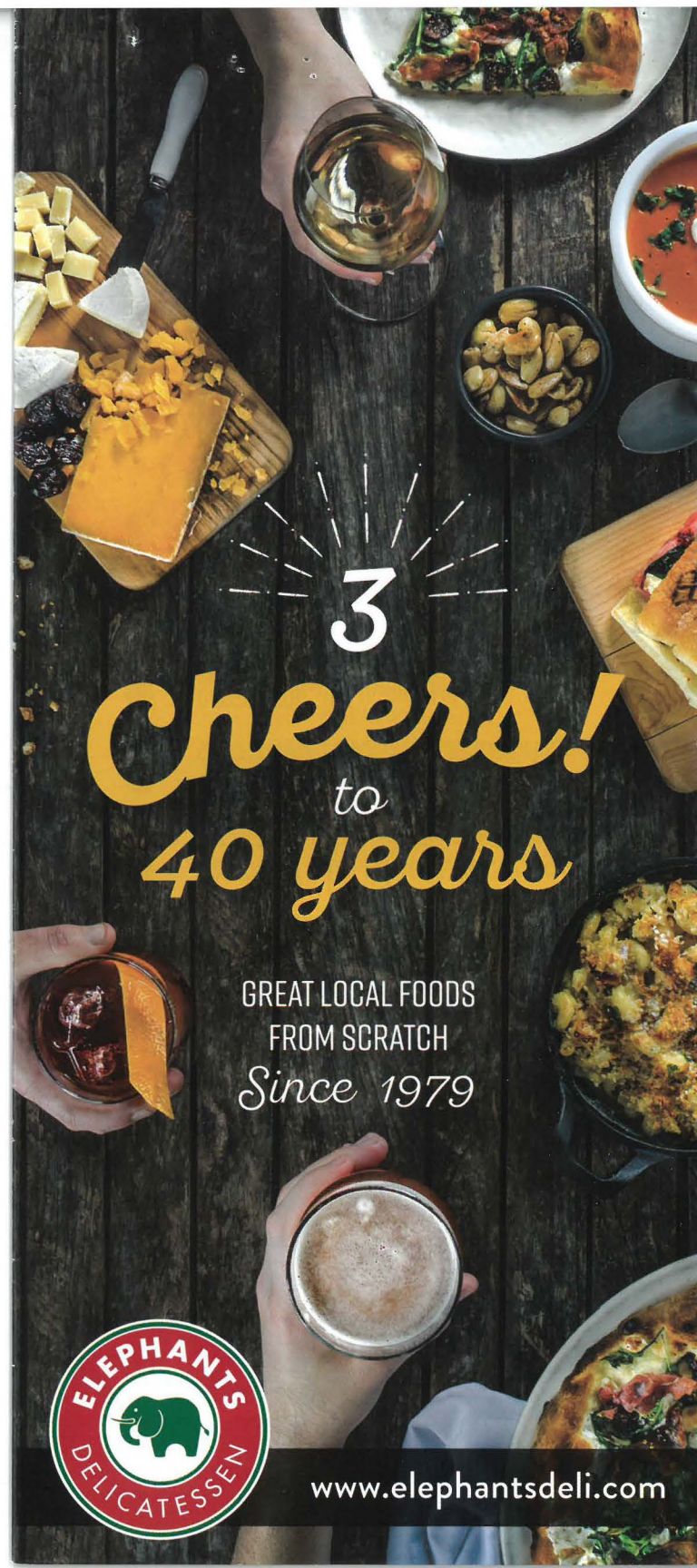


**PIUCCI LAW**  
TRIAL LAWYERS

**FIGHTING FOR YOU**

Personal Injury  
Insurance Disputes  
Wrongful Death

**503-228-7385**  
[piucci.com](http://piucci.com)



3

# Cheers!

to  
40 years

GREAT LOCAL FOODS  
FROM SCRATCH  
*Since 1979*



[www.elephantsdeli.com](http://www.elephantsdeli.com)



**PROVIDENCE  
PARK**



FOR THE LATEST CLUB NEWS, VISIT  
**TIMBERS.COM | THORNSFC.COM**



"Serving Goose Hollow since 1948"

**Cheerful**

1730 SW Taylor St  
Portland OR 97205  
503-222-3063



**Bullpen**

Under New Management  
Full Liquor Bar \* BEER TOGO

Spacious Outdoor Patio \* Locally Owned  
All Sports Packages \* All Oregon Lottery Games  
Full Food Menu \* DRINK SPECIALS \* Cheap Eats

**"All Sports, all the Time!"**

[www.cheerfulgrills.com](http://www.cheerfulgrills.com)



**Receive \$5 OFF**

Purchase of \$25 or more  
Not valid with any other offer or discount. Dine in only.  
21 & over. Tips not included. Expires: June 1, 2019

Check out our 2nd Cheerful Location.  
Cheerful Tortoise 1939 SW 6th & College on  
PSU Campus!

HOTEL *deLuxe*

Delivering Glamour.

Boutique hotel paying homage to  
the Golden Age of Hollywood.

729 SW 15th Ave, Portland OR 97205  
503.219.2094 [www.hoteldeluxeportland.com](http://www.hoteldeluxeportland.com)



Try our House Made  
Salmon Burger!

**WHERE THE WORLD EATS**

FRESH \* LOCAL \* HOMECOOKED \* CLASSIC AMERICAN  
LOCAL BEER \* WINE \* CIDER \* KOMBUCHA ON TAP

1810 NW Glisan Street 503.417.8143 7am 'til late

Your Guestroom is ready!

**... AND SLEEPS**

- \* Central Location
- \* Dorms & Private Rooms
- \* Common Kitchens
- \* Courtyard & Garden
- \* Free WiFi

Tuesday Live Folk Music

Thursday Old Time Music Jam

Saturday Communal Pasta Dinner



503.241.2783

**EVOLUTION**

HAIR DESIGN

**PORTLAND'S  
BEST KEPT SECRET  
SINCE 1993**

503.222.5928 | [EVOLUTIONHAIRPDX.COM](http://EVOLUTIONHAIRPDX.COM)  
909 SW 16<sup>TH</sup> AVE, PORTLAND, OR 97205

- 1 **ARTISTS REPERTORY THEATER**  
1515 SW Alder St. | 503-241-1278 artistsrep.org
- 2 **BELLAGIOS PIZZA** | 1742 SW Jefferson St.  
503-221-0110 | bellagiospizza.com
- 3 **BIG STING MEDIA GROUP**  
824 SW 18th Ave Ste. B | 503-816-1070
- 4 **BODY FLOW MASSAGE** 900 SW 13th Ave #105  
503-544-5695 | bodyflowpdx.massagetherapy.com
- 5 **CHEERFUL BULLPEN** 1730 SW Taylor St.  
503-222-3063 | cheerfulbullpen.com
- 6 **CHEVRON** 2230 W Burnside St.  
503 290-2553 | chevronwithtechron.com
- 7 **CIVIC TAPROOM** 621 SW 19th Ave.  
503-447-4621 | thecivictaproom.com
- 8 **COMMODORE** 1650 West Burnside St.  
503-224-7606 | commodorelounge.com
- 9 **DEBBIE BENSCHING PSYCHOTHERAPY** 1130 SW Morrison Suite 220  
503-944-5032 | counselingoption.com
- 10 **DRIFTWOOD ROOM** 729 SW 15th Ave.  
503-222-2171 hoteldeluxe.com
- 11 **EASTSIDE DELI** 1755 SW Jefferson St.  
971-544-7554 | pdxdeli.com
- 12 **EQUILIBRIUM** 913 SW 16th St.  
503-228-5000 | equilibriumnw.com
- 13 **EVOLUTION SALON** 909 SW 16th Ave.  
503-222-5928 | evolutionhairdesign.com
- 14 **FEHRENBACHER HOF**  
1225 SW 19th Ave. | 503-223-4493
- 15 **FINGERS & TOES** 1250 SW 18th Ave.  
503-224-1755 | fingersandtoessalonspa.com
- 16 **FIRST UNITED METHODIST CHURCH**  
1838 SW Jefferson St. | 503 228-3195 | fumcpdx.org
- 17 **FORTIS CONSTRUCTION** 1705 SW Taylor St # 200  
503-459-4477 fortisconstruction.com
- 18 **FRED MEYER**  
100 NW 20th Place | 503-273-2004 | fredmeyer.com
- 19 **FULCRUM FITNESS** 1932 W Burnside St.  
503-956-2513 | fulcrumfitness.com
- 20 **GILDA'S ITALIAN RESTAURANT** 1601 SW Morrison St.  
503-688-5066 | gildasitalianrestaurant.com
- 21 **GOOSE HOLLOW FLOWERS** 1219 SW 19th Ave.  
503-228-8107 | goosehollowflowers.com
- 22 **GOOSE HOLLOW INN**  
1927 SW Jefferson St. | 503-228-7010
- 23 **GRACIE'S RESTAURANT** 729 SW 15th Ave.  
503-222-2171 | graciesdining.com
- 24 **HOT LIPS PIZZA** 633 SW 18th Ave.  
503-517-9354 | hotlipspizza.com
- 25 **HOTEL DELUXE** 729 SW 15th Ave.  
503-219-2094 | hoteldeluxe.com
- 26 **INTERNATIONAL HOSTEL** 479 NW 18th Ave.  
503-241-2783 | nwportlandhostel.com
- 27 **INTERNATIONAL ROSE TEST GARDEN** 400 SW Kingston Ave.  
503 823-3636 | portlandoregon.gov
- 28 **KINARA THAI** 1126 SW 18th Ave.
- 29 **LANE PR**  
905 SW 16th Ave. | 503-221-0480 | lanepdx.com
- 30 **LINCOLN HIGH SCHOOL**  
1600 SW Salmon St. 503 916-5200 pps.k12.or.us
- 31 **MARATHON TAVERNA** 1735 West Burnside St.  
503-224-1341 Marathontaverna.com
- 32 **MMDC COMMERCIAL REAL ESTATE** 111 SW Columbia St #1380  
503-223-4777 | melvinmarkcompanies.com
- 33 **MEN'S CORNER** 909 SW 16th Ave.  
503-222-5928 evolutionhairdesign.com
- 34 **MULTNOMAH ATHLETIC CLUB** 1849 SW Salmon St.  
503-223-6251 | themac.com
- 35 **ONPOINT CREDIT UNION** 2011 W Burnside St.  
503-221-6799 | onpointcu.com
- 36 **OREGON CULINARY INSTITUTE** 1701 SW Jefferson St.  
503-961-6200 | Oregonculinaryinstitute.com
- 37 **OREGON REPRODUCTIVE MEDICINE** SW 15th and SW Yamhill  
503-274-4994 | oregonreproductivemedicine.com
- 38 **OREGON ZOO** SW Canyon Road  
503 226-1561 | oregonzoo.org
- 39 **PHIL'S MEAT MARKET** 17 NW 23rd Place  
503-224-9541 philsmeatmarket.com
- 40 **PIUCCI LAW** 900 SW 13th Ave. Suite 200  
503-228-7385 | piucci.com
- 41 **PORTLAND GEAR** 627 SW 19th Ave.  
503-437-4439 | portlandgear.com
- 42 **PORTLAND JAPANESE GARDEN** 611 SW Kingston Ave.  
503 223-1321 | japanesegarden.com
- 43 **PROVIDENCE SPORTS CARE CENTER**  
909 SW 18th Ave. | 503 962-1900
- 44 **PROVIDENCE PARK/TIMBERS** 1844 SW Morrison St.  
503-553-5400 | timbers.com
- 45 **RINGSIDE** 2165 W Burnside St.  
503-223-1513 | ringsidesteakhouse.com
- 46 **ST. MARY'S CATHEDRAL**  
1716 NW Davis St. | 503 228-4397
- 47 **SCRAP PDX** 1736 SW Alder St.  
503-294-0769 | scrappdx.org
- 48 **TIMBERS ARMY (107ist)**  
1633 SW Alder St. | timbersarmy.org
- 49 **TRANSFORMATIONS PILATES STUDIO** 1710 SW Taylor St.  
503-796-2820 | transformationspdx.com
- 50 **URBAN RENAISSANCE** 1211 SW 5th Ave #2230  
503-241-3345 | urbanrengroup.com
- 51 **U.S. BANK STADIUM OFFICE** 2000 SW Morrison St.  
503-275-4850 | usbank.com
- 52 **VALEANT ARCHITECTS** 824 SW 18th Ave.  
503-241-2727 | valarch.com
- 53 **VANDERLOO CHIROPRACTIC** 2230 W Burnside St  
971- 255-1922 | vanderloochirowest.com
- 54 **WELLS FARGO** 1972 W Burnside St.  
503 928-6071 wells Fargo.com
- 55 **ZION LUTHERAN CHURCH** 1015 SW 18th Ave.  
503-221-1343 | zion-portland.org
- 56 **ELEPHANTS DELI** 115 NW 22nd Ave

# NW | NOB HILL | 23RD

# PEARL DISTRICT

UPTOWN SHOPPING CENTER

FRED MEYER

ST. MARY'S CATHEDRAL

WHOLE FOODS

KINGS HILL HISTORIC DISTRICT

PROVIDENCE PARK STADIUM

MULTNOMAH ATHLETIC CLUB

MT. ZION LUTHERAN CHURCH

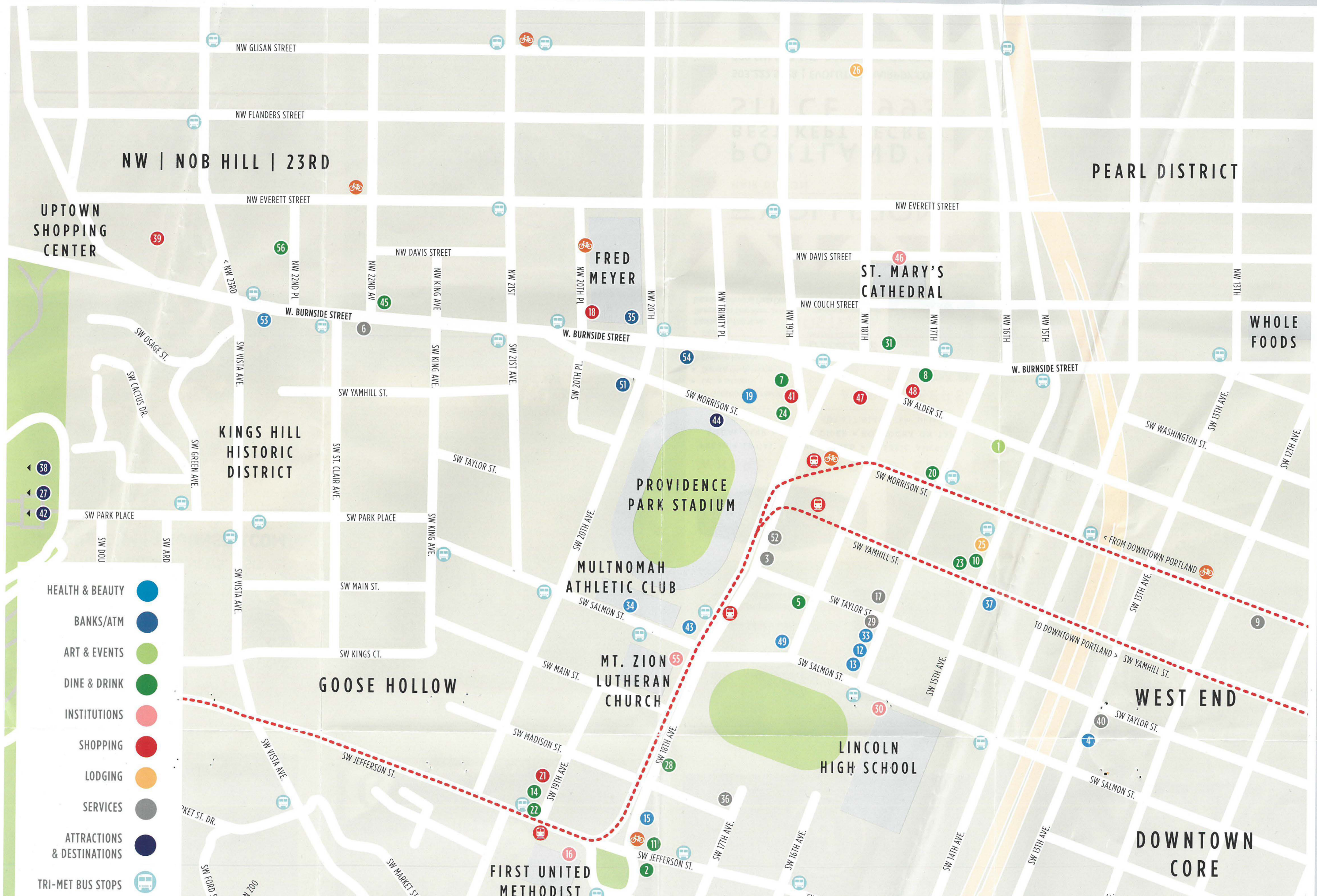
GOOSE HOLLOW

LINCOLN HIGH SCHOOL

WEST END

DOWNTOWN CORE

- HEALTH & BEAUTY
- BANKS/ATM
- ART & EVENTS
- DINE & DRINK
- INSTITUTIONS
- SHOPPING
- LODGING
- SERVICES
- ATTRACTIONS & DESTINATIONS
- TRI-MET BUS STOPS







*ALL the Food, Drinks, Sports, Games & more... ALL the time!*



*Follow our Instagram @marathontaverna*

1745 West Burnside St. / (503) 224-1341 / marathontaverna.com



LITTLE RED'S  
BAKESHOP & CAFÉ  
SW 14TH & YAMHILL

**ARTISTS  
REP** **WE DO  
THEATRE**

artistsrep.org  
503.241.1278  
1515 SW Morrison

Producing intimate,  
provocative theatre and  
providing a home for  
artists and audiences of  
varied backgrounds to  
take creative risks in the  
heart of the Goose Hollow  
neighborhood.



THE  
**CIVIC**

TAPROOM & BOTTLE SHOP

BEER

WINE

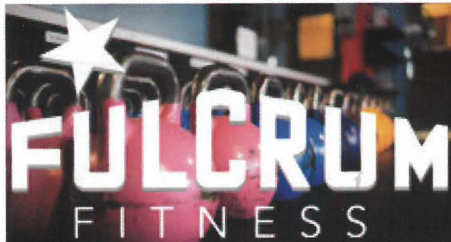
CIDER

**250 BEERS**

EXTENSIVE CIDER & WINE SELECTION

BOTTLES TO GO  
GROWLER FILLS

621 SW 19TH AVE



BARRE  
BOOTCAMP  
CYCLE  
YOGA

1932 W Burnside  
Portland, Or 97209

Contact us  
for one complimentary  
training session!

503-956-2918  
GetFit@FulcrumFitness.com

*Driftwood  
Room*

Classic Portland Cocktails

Happy Hour | Late Night | Weekend Brunch

729 SW 15th Ave, Portland OR 97205  
503.219.2094 www.hoteldeluxeportland.com



**BELLAGIOS PIZZA**  
*The Very Best*

1742 SW Jefferson

503.221.0110



*Goose Hollow*  
FLOWERS

*Simply Beautiful Flowers*

www.goosehollowflowers.com  
info@goosehollowflowers.com

1219 SW 19th Ave, Portland OR 97205  
503.228.8107

**VENTUREPORTLAND**  
Growing Business. Connecting Neighbors.  
OLD TOWN CHATWATER GATEWAY  
ST. JOHNS  
GOOSE HOLLOW  
SPANGLAR  
CENTRAL PARK  
WESTPORT  
MONTAVILLA/EAST TOWN  
W. WILLIAMS  
FROSTBERG  
HUNTERWOOD  
MONTAVILLA  
BURNHAM  
WESTPORTER  
PARK  
MULTHOMAN  
MULTHOMAN VILLAGE  
MULTHOMAN VILLAGE  
42ND AVE  
BROOKSIDE EAST

ventureportland.org

**Debbie Benschung**  
MSW LCSW ACSW MSWAC CHT

Mind • Body • Health



**Psychotherapist & Addictions Counselor**

503.944.5032  
DebBen@CounselingOption.com  
CounselingOption.com

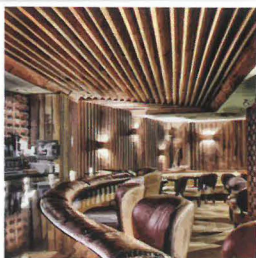
1130 SW Morrison Street, Suite 220  
Portland, Oregon 97205

# Driftwood Room

Classic Portland Cocktails

Happy Hour | Late Night | Weekend Brunch

729 SW 15th Ave, Portland OR 97205  
503.219.2094 [www.hoteldeluxeportland.com](http://www.hoteldeluxeportland.com)



# BodyFlow

MASSAGE

Kat Kurtz, LMT #10263

[bodyflowpdx.massagetherapy.com](http://bodyflowpdx.massagetherapy.com) (503) 544 - 5695



## Goose Hollow FLOWERS

*Simply Beautiful Flowers*

[www.goosehollowflowers.com](http://www.goosehollowflowers.com)  
[info@goosehollowflowers.com](mailto:info@goosehollowflowers.com)

1219 SW 19th Ave, Portland OR 97205  
503.228.8107

## gracie's

Fine dining with a  
touch of Hollywood Glamour!

Breakfast | Lunch | Dinner | Weekend Brunch

729 SW 15th Ave, Portland OR 97205  
(503) 222-2171 [www.hoteldeluxeportland.com](http://www.hoteldeluxeportland.com)



## Debbie Benschung

MSW, LOSW, ACSW, MSWAC, CHT

Mind • Body • Health



**Psychotherapist & Addictions Counselor**

503.944.5032  
[DebBen@CounselingOption.com](mailto:DebBen@CounselingOption.com)  
[CounselingOption.com](http://CounselingOption.com)

1130 SW Morrison Street, Suite 220  
Portland, Oregon 97205

LANE

# FINN

PARTNERS

RESULTS-DRIVEN  
MARKETING  
COMMUNICATIONS

503.221.0480

[www.lanep.com](http://www.lanep.com)

PORTLAND, OREGON

# STADIUM DISTRICT

MAP & GUIDE

189477

THINGS TO SEE & DO | RESTAURANTS & BARS | SHOPPING | TRANSPORTATION

The Stadium District boasts a long and vibrant history and continues to evolve into one of Portland's most unique business districts. Home to many favorite dining options and pubs, shops and services. You'll enjoy discovering the many things the district has to offer, including Portland's iconic stadium that is home to the Timbers and Thorns.

