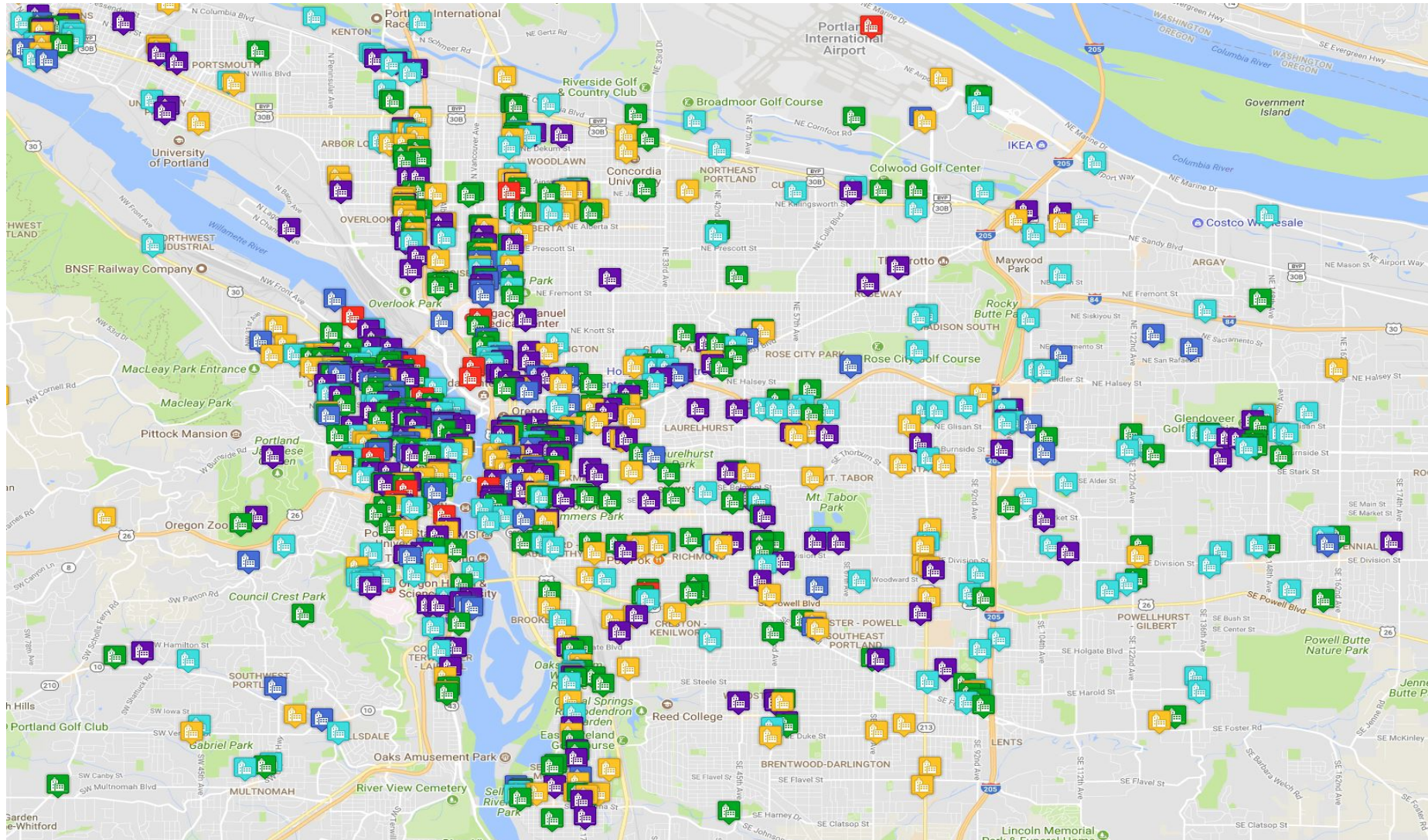
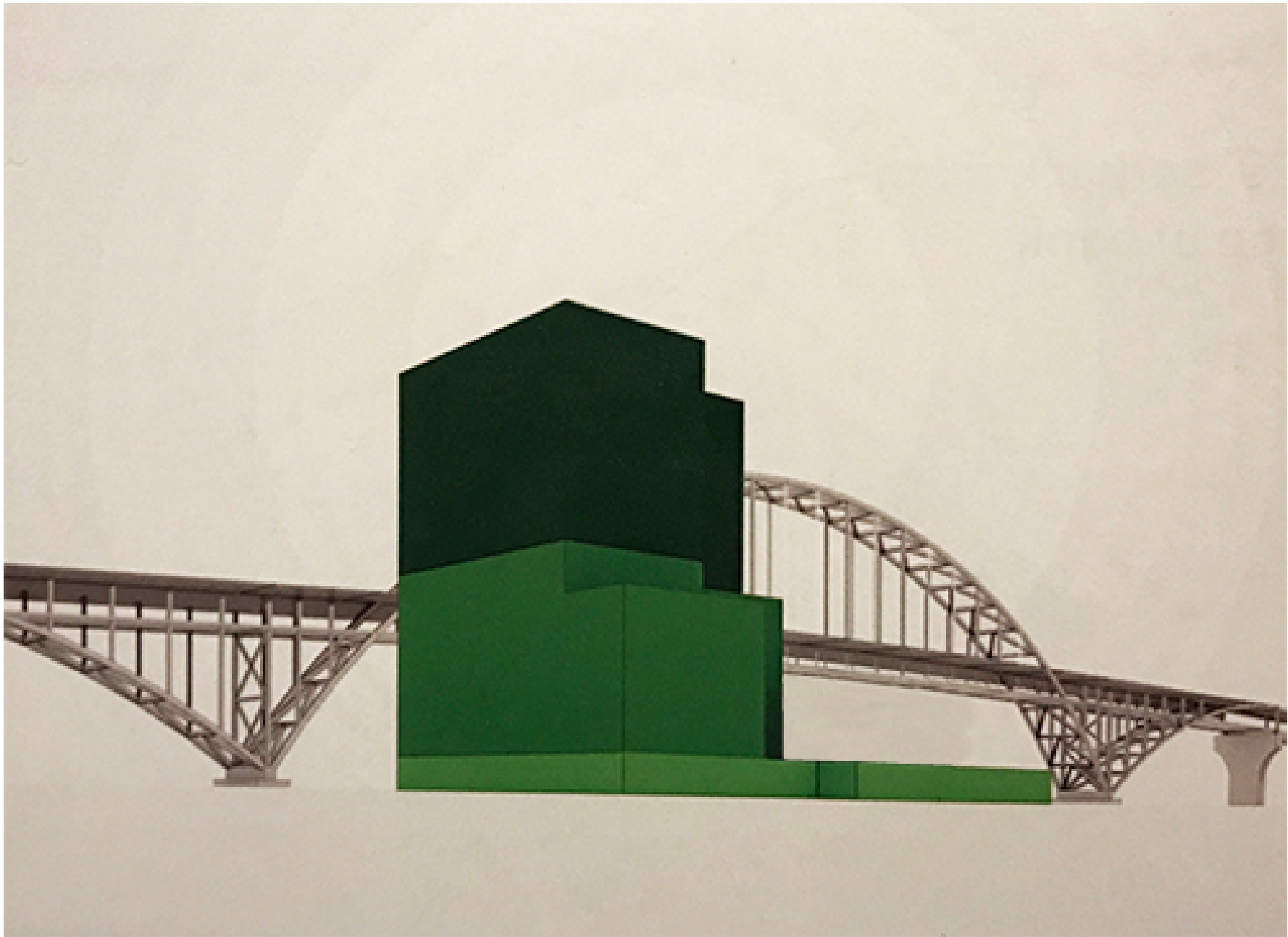


# Design Commission has been busy





The world's most expensive piece of art, Salvatore Mundi by Leonardo da Vinci sold in Nov 2017 for \$450,000,000

**It should be protected at all cost**



Fremont Bridge is Portland's most expensive piece of public art  
\$82,000,000 in 1973 dollars \$440,000,000 in 2018 dollars  
**It should be protected at all cost**



Why would the closest and best view to the most expensive piece of public art in all of Portland be blocked?



Can you Imagine?



How do you correct a mistake once it's made?

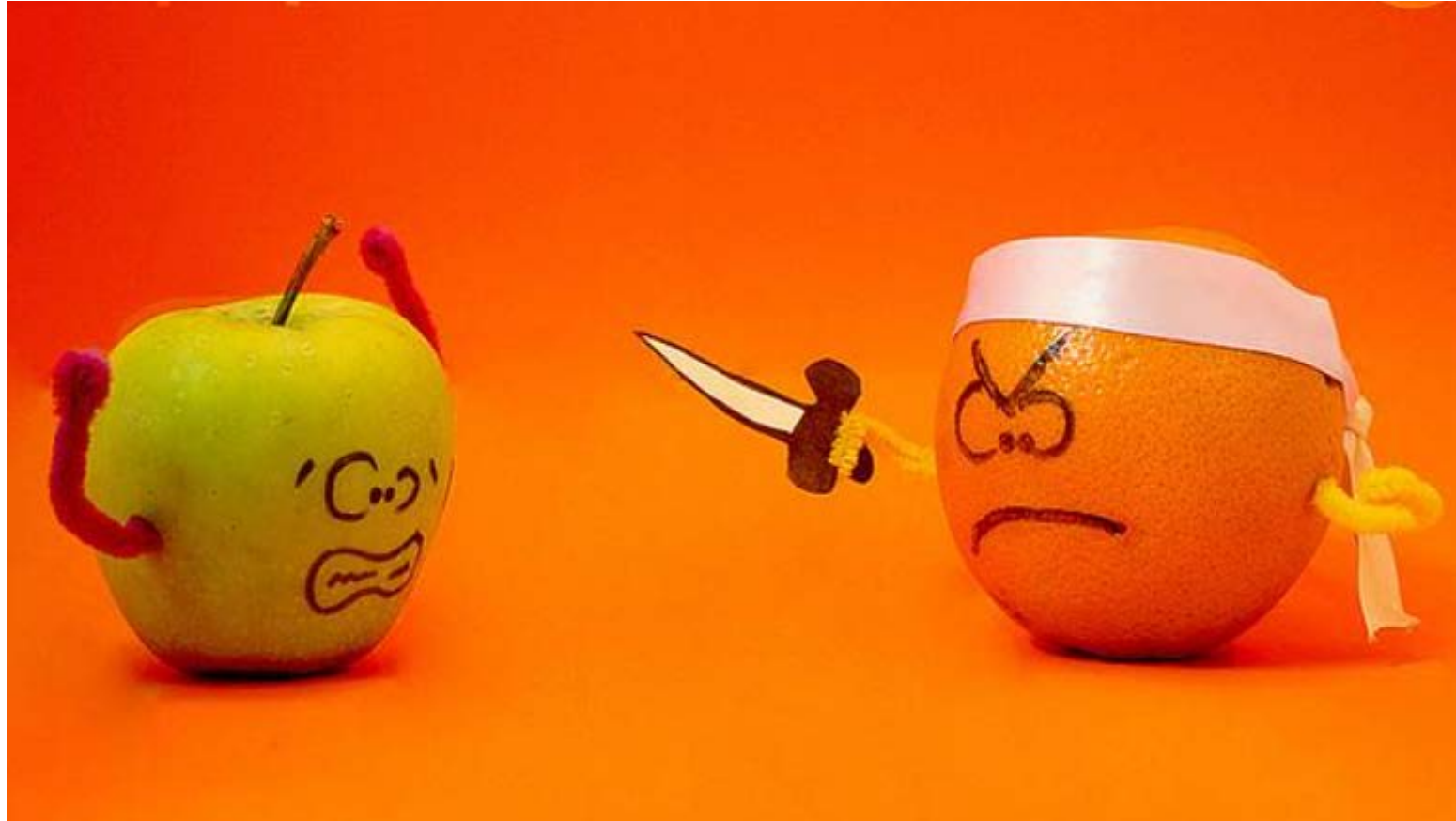


Satellite

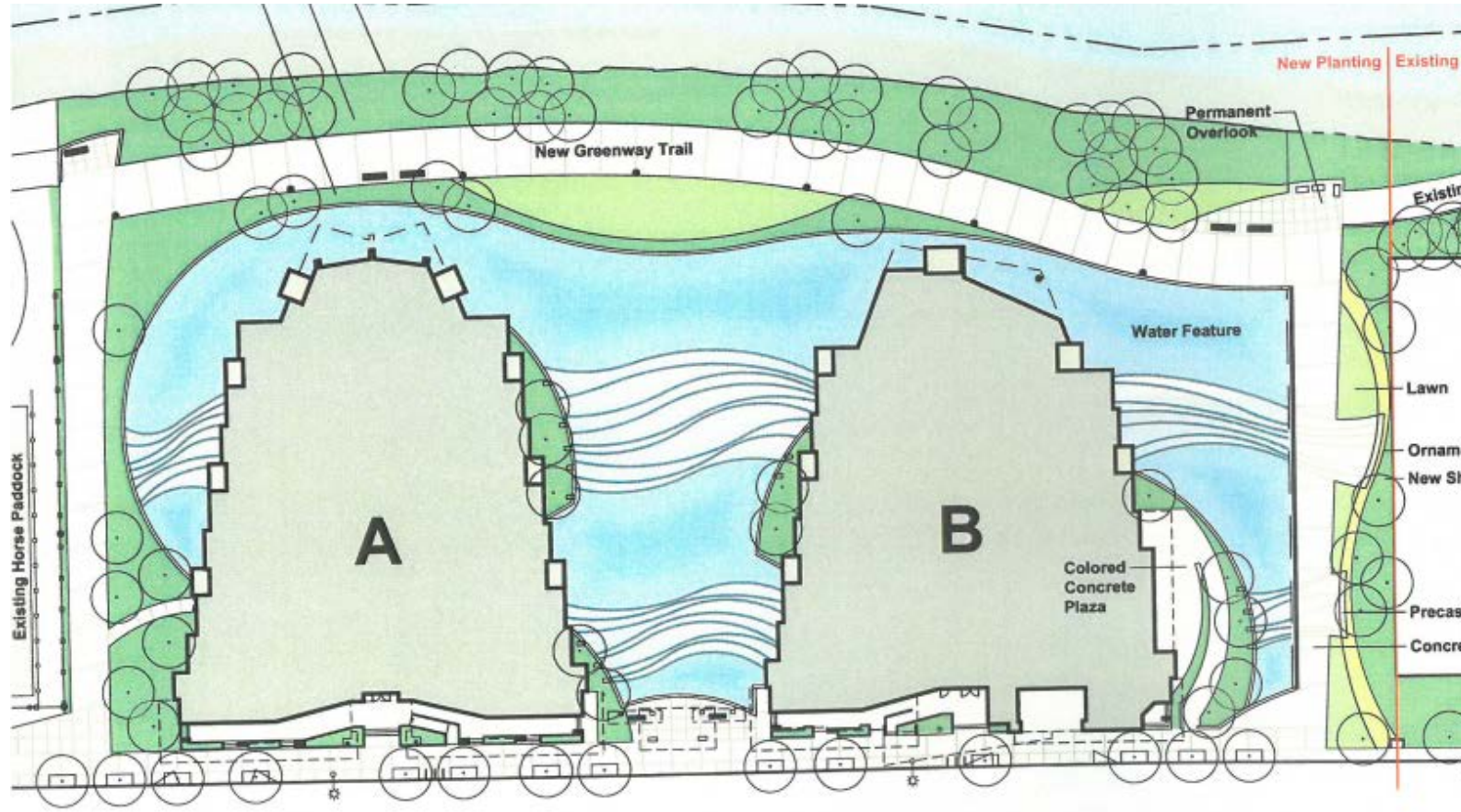




The precedence's referenced don't compare

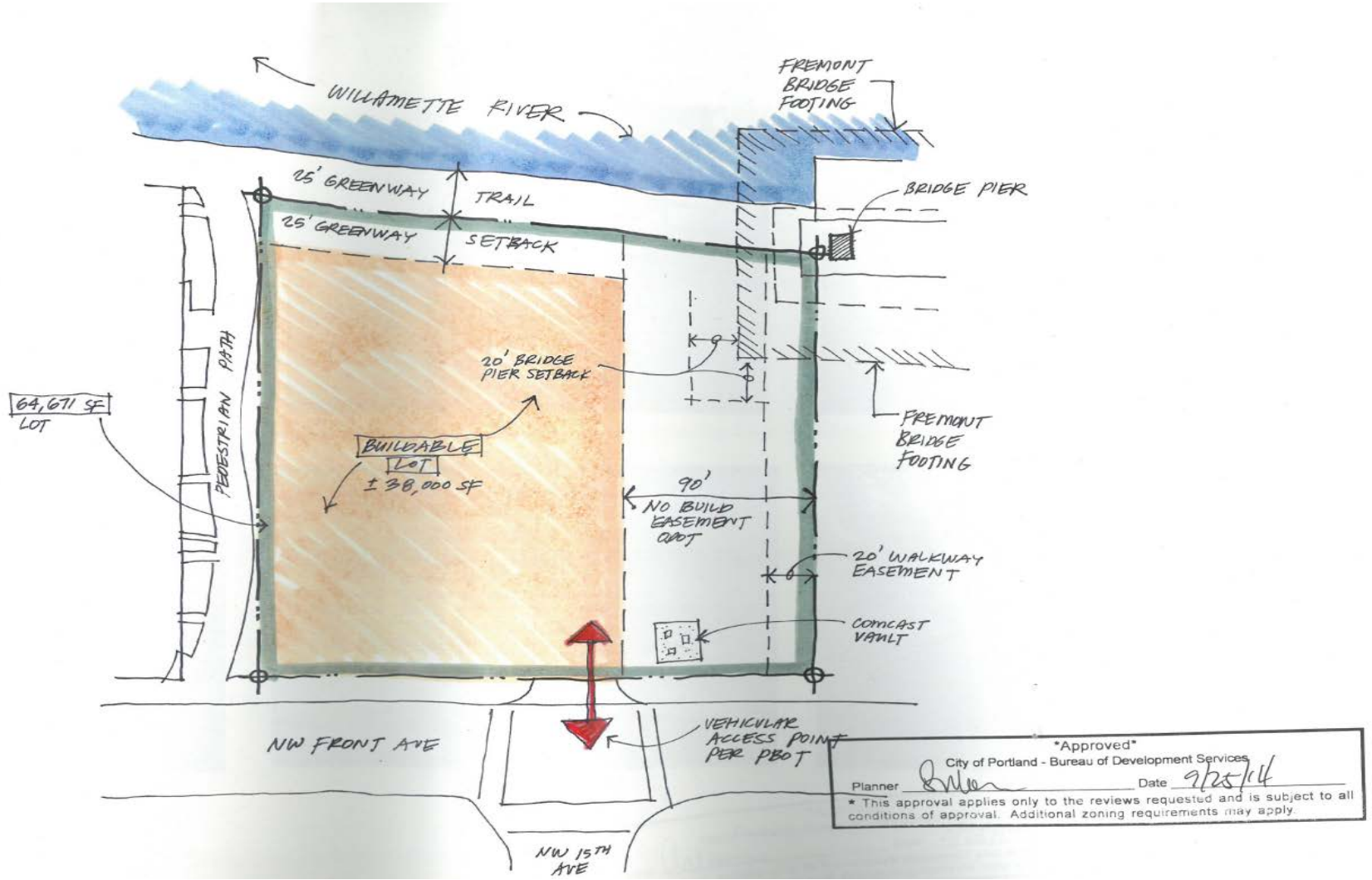


# Water Front Pearl - This is a water feature





# Bridgetown Lofts - This is a greenway





If it's all about Precedence's

