

ALL-LITE, MCDONALDS SITE SUBMITTAL

SHEET DESIGNATION

- C-1....COVER SHEET
- G-1....GENERAL VIEWS
- P-1....PLAN
- E-1....ELEVATION
- D-1....DETAILS & SECTIONS

LOCATION: 12005 N CENTER ST, PORTLAND, OR 97217		
WIND VELOCITY	120	MPH
BUILDING EXPOSURE	C	
TRELLIS DEAD LOAD	3.5	PSF
TRELLIS LIVE LOAD	0.0	PSF
GROUND SNOW LOAD	20.0	PSF
TRELLIS WIND LOAD DOWN	16.9	PSF
TRELLIS WIND LOAD UP	16.9	PSF
TRELLIS LOAD ACTING DOWN	37.9	PSF
TRELLIS LOAD ACTING UP	20.0	PSF

SPACE RESERVED FOR P.E. STAMP

ENGINEER'S REVIEW

DIBBLE ENGINEERS, INC.

X

No Exceptions Taken

Note Markings

Revise & Resubmit

By JCM

Date 2018-10-02

ENGINEER'S REVIEW IS FOR GENERAL CONFORMANCE TO THE DESIGN CONCEPT AND CONTRACT DOCUMENTS. REVIEW OF THE SPECIALTY STRUCTURAL ENGINEERS (SSE) DESIGN IS FOR CONFORMANCE TO DESIGN CRITERIA AND COMPATIBILITY WITH THE DESIGN OF THE BUILDING AND DOES NOT RELIEVE THE SSE OF RESPONSIBILITY FOR THAT DESIGN. MARKINGS OR COMMENTS SHALL NOT BE CONSTRUED AS RELIEVING THE CONTRACTOR FROM COMPLIANCE WITH THE PROJECT PLANS AND SPECIFICATIONS. NOT DEPARTURES THEREFROM. THE CONTRACTOR REMAINS RESPONSIBLE FOR DETAILS AND ACCURACY, FOR CONFIRMING AND CORRELATING ALL QUANTITIES AND DIMENSIONS, FOR SELECTION FABRICATION PROCESSES, FOR TECHNIQUES OF ASSEMBLY, AND FOR PERFORMING WORK IN A SAFE MANNER.

SPECIAL INSPECTIONS ARE REQUIRED ON THIS PERMIT FOR THE FOLLOWING AREAS OF CONSTRUCTION:

☐

STRUCTURAL STEEL

☒

ADHESIVE ANCHORS

☐

REINFORCED CONCRETE

☐

☐

EXPANSION/SCREW ANCHORS

☐

STRUCTURAL OBSERVATION BY THE ENGINEER IS TO OCCUR AT THE FOLLOWING STAGES OF CONSTRUCTION:

City of Portland

REVIEWED FOR CODE COMPLIANCE

OCT 17 2018

Permit Number

APPROVAL NECESSARY BEFORE FABRICATION CAN BEGIN. PLEASE FILL IN THE INFORMATION BELOW.

REQUIRED TRELLIS ON SITE DATE:

DELIVERY CONTACT PERSON:

DELIVERY CONTACT PHONE#:

☐

REVIEWED AND APPROVED

☐

REVISE AND RESUBMIT

☐

NOTE MARKUPS

☐

REJECTED

DRAWING HAS BEEN REVIEWED FOR CONFORMITY TO THE GENERAL INTENT OF THE CONTRACT DOCUMENTS. THE CUSTOMER SHALL BE RESPONSIBLE FOR VERIFYING DIMENSIONS, ACCURACY AND QUANTITIES FOR EACH PRODUCT. ALL-LITE ASSUMES THAT THE BUILDING CONDITIONS, ILLUSTRATED OR NOT, ARE CAPABLE OF SUPPORTING THE SUPPLIED PRODUCTS AT THE SPECIFIED DESIGN LOAD.

BY:

DATE:

ALL-LITE ARCHITECTURAL PRODUCTS

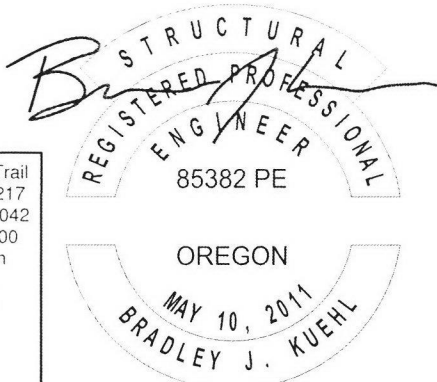
RICE

ENGINEERING

105 School Creek Trail  
Luxemburg, WI 54217  
Phone: (920)-617-1042  
Fax: (920)-617-1100  
www.rice-inc.com

This Certification is limited to the structural design of the structural components of this sunshade system. It does NOT include responsibility for:

- \* Structural design of glass lites, gaskets, and sealants.
- \* Design of air and water infiltration prevention
- \* The manufacture, assembly, or installation of the system.
- \* Quantities of materials or dimensional accuracy of drawings.



08/16/2018  
EXPIRES: 6/30/19

D	REVISED PER MARKUPS	8/1/2018	DP
C	FINAL REVISED SUBMITTAL	1/31/2018	LSW
B	FINAL REVISED SUBMITTAL	11/13/2017	LSW
A	INITIAL RELEASE	8/16/2017	BMG
REV. NO.	DESCRIPTION	DATE	DRAWN BY

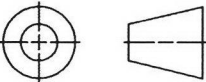
UNLESS OTHERWISE SPECIFIED  
DIMENSION ARE IN INCHES.

TOLERANCE UNLESS NOTED:  
X.X ±0.030  
X.XX ±0.015  
X.XXX ±0.010  
ANGLE ±1°  
FRACTION ±1/16

MAX HOLE BREAKOUT:  
15% OF MATERIAL THICKNESS

5101 Blue Mound Road  
Fort Worth, Texas 76106  
Phone: 817-509-2300

THIRD ANGLE PROJECTION



ANCHOR SCHEDULE (ASCE 7-10)			
WALL CONDITION	WIND SPEED	APPROX. O.C. SPACING EFS EXTERIOR CONDITION (ALSO SEE FOOTNOTE 1)	APPROX. O.C. SPACING ALL OTHER EXTERIOR CONDITIONS (ALSO SEE FOOTNOTE 1)
WOOD	≤115	36"	36"
	140	N/A	N/A
	155	N/A	N/A
	180	N/A	N/A
CMU	≤115	N/A	N/A
	140	N/A	N/A
	155	N/A	N/A
	180	N/A	N/A
	195	N/A	N/A

FOOTNOTE 1: ADDITIONAL ANCHORS ARE REQUIRED 6" FROM EACH END OF MOUNTING RAIL (MAX.)

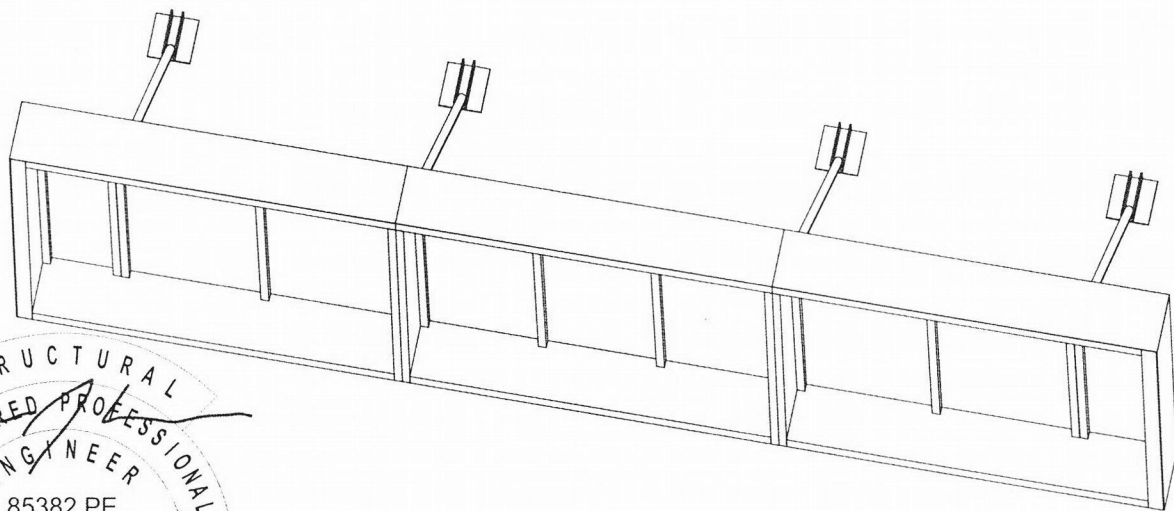
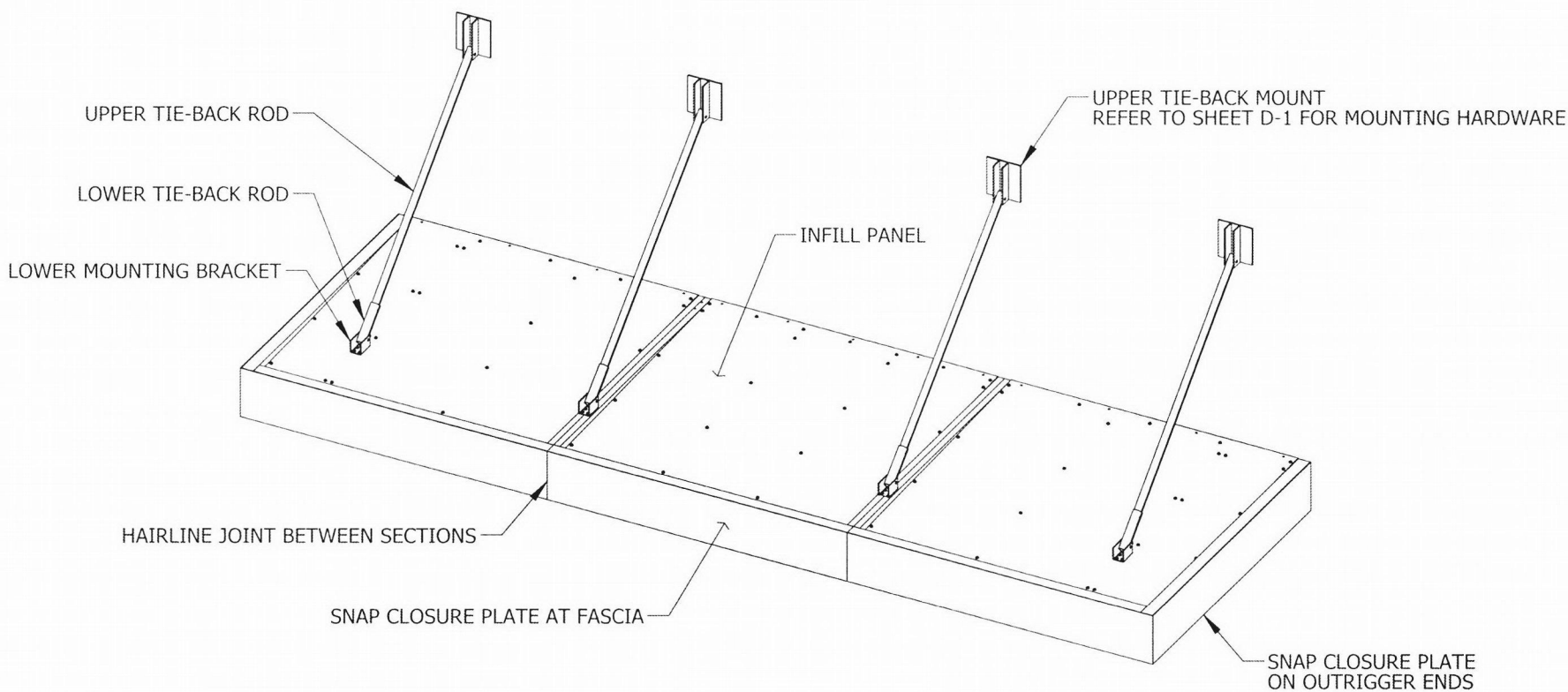
ALL-LITE

ARCHITECTURAL PRODUCTS

THIS DRAWING AND THE DESIGN REPRESENTED ARE THE CONFIDENTIAL AND PROPRIETARY PROPERTY OF PCI INDUSTRIES AND MAY NOT BE DISCLOSED, LOANED, COPIED, OR USED FOR ANY PURPOSE OTHER THAN DESIGN REVIEW AND APPROVAL WITHOUT THE EXPRESS WRITTEN CONSENT OF PCI INDUSTRIES.

DRAWING DESCR: COVER SHEET				
PROJECT: SITE ID 036-0034				
LOCATION: 12005 N CENTER ST, PORTLAND, OR 97217				
CUSTOMER: MCDONALD'S USA, LLC				
PROJ. MGR: ZAC PARKER		DRAWN BY: BMG		
DATE: 8/16/2017	CHK'D BY:	ORDER NUMBER	P.O. NUMBER	DRAWING NUMBER
SHEET: 1 of 9	SCALE: N/A	264399	1674063	C-1

I:\0 ENGINEERING PROJECTS\MCDONALDS TRELLIS\0 - ATL Trellis Submittals\264399 PORTLAND, OR SITE ID 036-0034\CAD Models\Approval\



City of Portland  
REVIEWED FOR CODE  
COMPLIANCE  
OCT 17 2018  
Permit Number

**BRADLEY J. KUEHL**  
STRUCTURAL  
REGISTERED PROFESSIONAL  
ENGINEER  
85382 PE  
OREGON  
MAY 10, 2011

**RICE**  
**ENGINEERING**

105 School Creek Trail  
Luxemburg, WI 54217  
Phone: (920)-617-1042  
Fax: (920)-617-1100  
www.rice-inc.com

This Certification is limited to the structural design of the structural components of this sunshade system. It does NOT include responsibility for:  
\* Structural design of glass lites, gaskets, and sealants.  
\* Design of air and water infiltration prevention  
\* The manufacture, assembly, or installation of the system.  
\* Quantities of materials or dimensional accuracy of drawings.

08/16/2018  
EXPIRES: 6/30/19

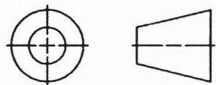
UNLESS OTHERWISE SPECIFIED  
DIMENSION ARE IN INCHES.

TOLERANCE UNLESS NOTED:  
X.X ±0.030  
X.XX ±0.015  
X.XXX ±0.010  
ANGLE ±1°  
FRACTION ±1/16

MAX HOLE BREAKOUT:  
15% OF MATERIAL THICKNESS

5101 Blue Mound Road  
Fort Worth, Texas 76106  
Phone: 817-509-2300

THIRD ANGLE PROJECTION



**ALL-LITE**  
**ARCHITECTURAL PRODUCTS**

THIS DRAWING AND THE DESIGN REPRESENTED ARE THE CONFIDENTIAL AND PROPRIETARY PROPERTY OF PCI INDUSTRIES AND MAY NOT BE DISCLOSED, LOANED, COPIED, OR USED FOR ANY PURPOSE OTHER THAN DESIGN REVIEW AND APPROVAL WITHOUT THE EXPRESS WRITTEN CONSENT OF PCI INDUSTRIES.

DRAWING DESCR: TRELLIS GENERAL ASSEMBLY

PROJECT: SITE ID 036-0034

LOCATION: 12005 N CENTER ST, PORTLAND, OR 97217

CUSTOMER: MCDONALD'S USA, LLC

PROJ. MGR: ZAC PARKER

DRAWN BY: BMG

DATE: 8/16/2017

CHK'D BY:

ORDER NUMBER

P.O. NUMBER

DRAWING NUMBER

SHEET: 2 of 9

SCALE: NTS

264399

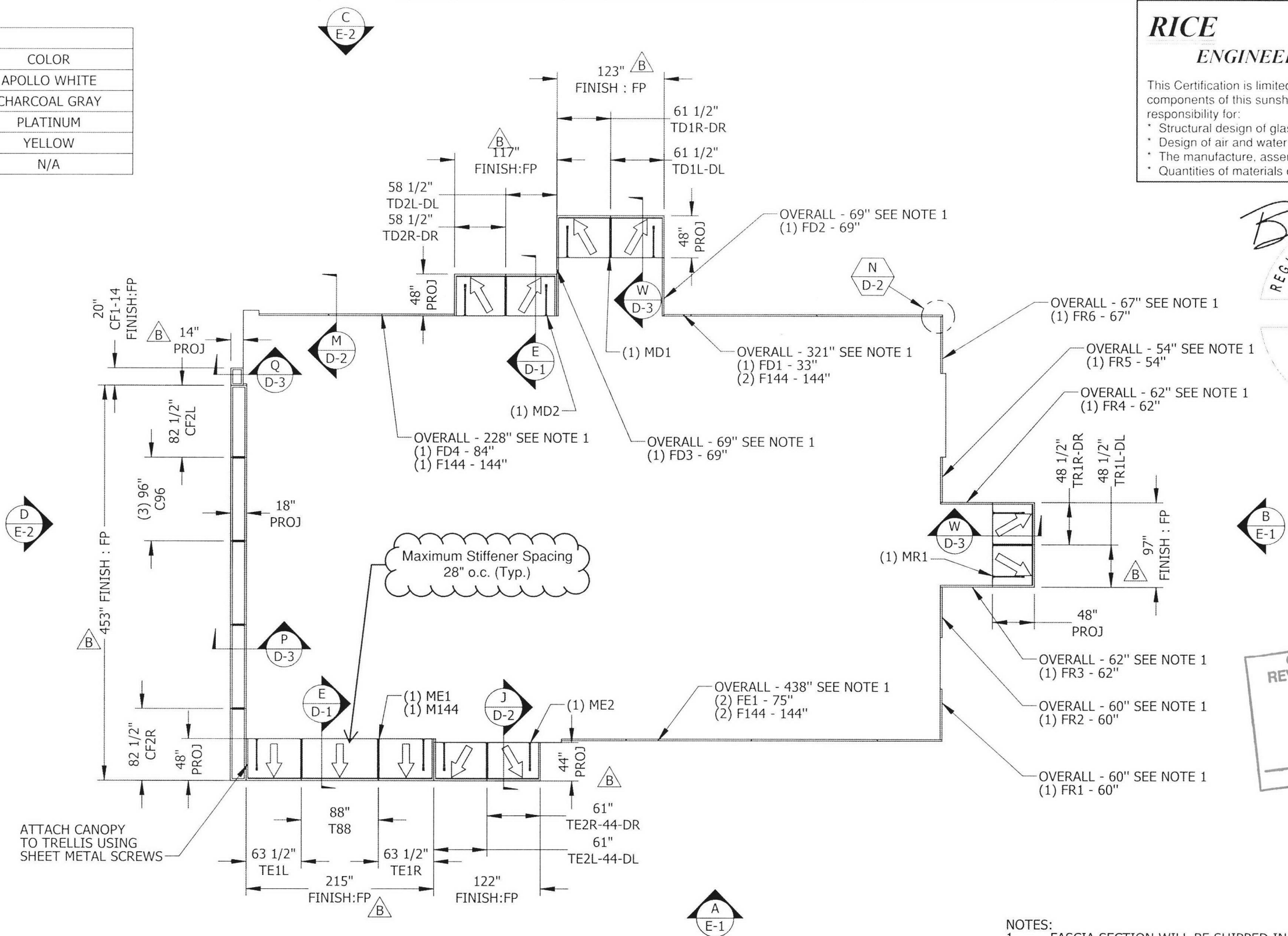
1674063

G-1

REV. NO.	DESCRIPTION	DATE	DRAWN BY
D	REVISED PER MARKUPS	8/1/2018	DP
C	FINAL REVISED SUBMITTAL	1/31/2018	LSW
B	FINAL REVISED SUBMITTAL	11/13/2017	LSW
A	INITIAL RELEASE	8/16/2017	BMG

I:\0 ENGINEERING PROJECTS\MCDONALDS TRELLIS\0 - ATL Trellis Submittals\264399 PORTLAND, OR SITE ID 036-0034\CAD Models\Approval\

FINISH CODES		
CODE	TYPE	COLOR
FA	FLUOROPOLYMER	APOLLO WHITE
FC	FLUOROPOLYMER	CHARCOAL GRAY
FP	FLUOROPOLYMER	PLATINUM
FG	FLOURPOLYMER	YELLOW
FX	MILL	N/A



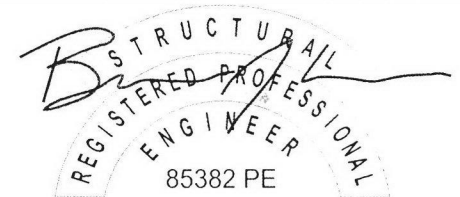
- NOTES:
- FASCIA SECTION WILL BE SHIPPED IN 12 FOOT SECTIONS. A SECTION PIECE OF THE FASCIA RUN MUST BE FIELD TRIMMED TO FIT. LEAVE 1/4" GAP AT CONDITION FOR THERMAL EXPANSION.
  - "Mxx" - MOUNTING RAIL TAG.

**RICE**  
**ENGINEERING**

This Certification is limited to the structural design of the structural components of this sunshade system. It does NOT include responsibility for:

- \* Structural design of glass lites, gaskets, and sealants.
- \* Design of air and water infiltration prevention
- \* The manufacture, assembly, or installation of the system.
- \* Quantities of materials or dimensional accuracy of drawings.

105 School Creek Trail  
Luxemburg, WI 54217  
Phone: (920)-617-1042  
Fax: (920)-617-1100  
www.rice-inc.com



OREGON  
MAY 10, 2011  
BRADLEY J. KUEHL  
08/16/2018  
EXPIRES: 6/30/19



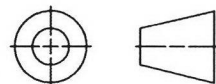
UNLESS OTHERWISE SPECIFIED  
DIMENSION ARE IN INCHES.

TOLERANCE UNLESS NOTED:  
X.X ±0.030  
X.XX ±0.015  
X.XXX ±0.010  
ANGLE ±1°  
FRACTION ±1/16

MAX HOLE BREAKOUT:  
15% OF MATERIAL THICKNESS

5101 Blue Mound Road  
Fort Worth, Texas 76106  
Phone: 817-509-2300

THIRD ANGLE PROJECTION



**ALL-LITE**  
**ARCHITECTURAL PRODUCTS**

THIS DRAWING AND THE DESIGN REPRESENTED ARE THE CONFIDENTIAL AND PROPRIETARY PROPERTY OF PCI INDUSTRIES AND MAY NOT BE DISCLOSED, LOANED, COPIED, OR USED FOR ANY PURPOSE OTHER THAN DESIGN REVIEW AND APPROVAL WITHOUT THE EXPRESS WRITTEN CONSENT OF PCI INDUSTRIES.

DRAWING DESCR: PLAN VIEW, TRELLIS & FASCIA

PROJECT: SITE ID 036-0034

LOCATION: 12005 N CENTER ST, PORTLAND, OR 97217

CUSTOMER: MCDONALD'S USA, LLC

PROJ. MGR: ZAC PARKER

DRAWN BY: BMG

DATE: 8/16/2017

CHK'D BY:

ORDER NUMBER

P.O. NUMBER

DRAWING NUMBER

SHEET: 3 of 9

SCALE: 3/32"=1'0"

264399

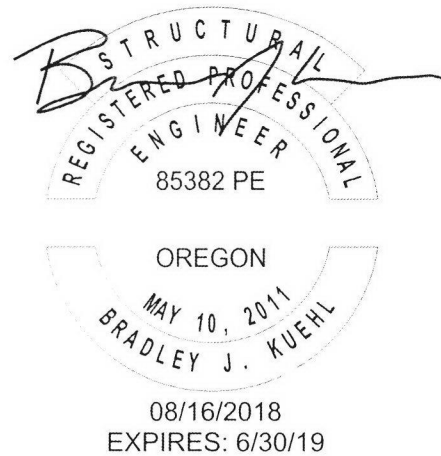
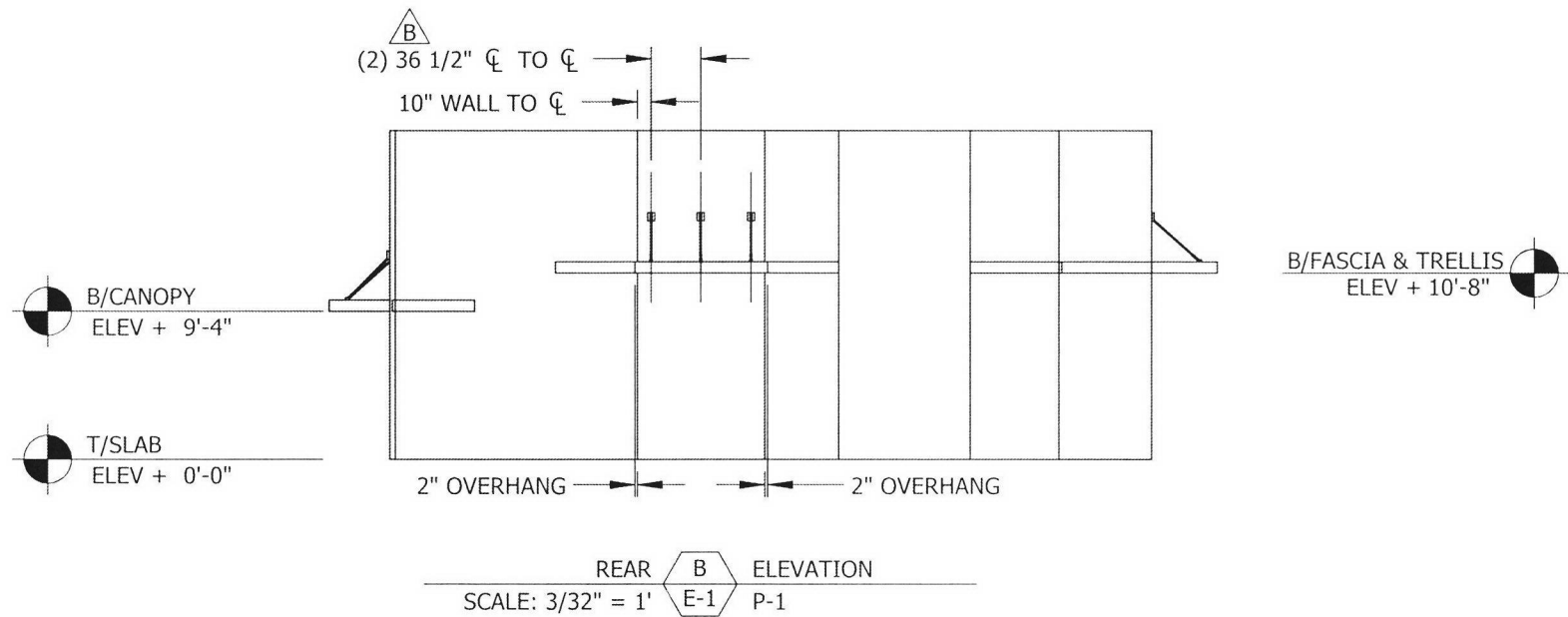
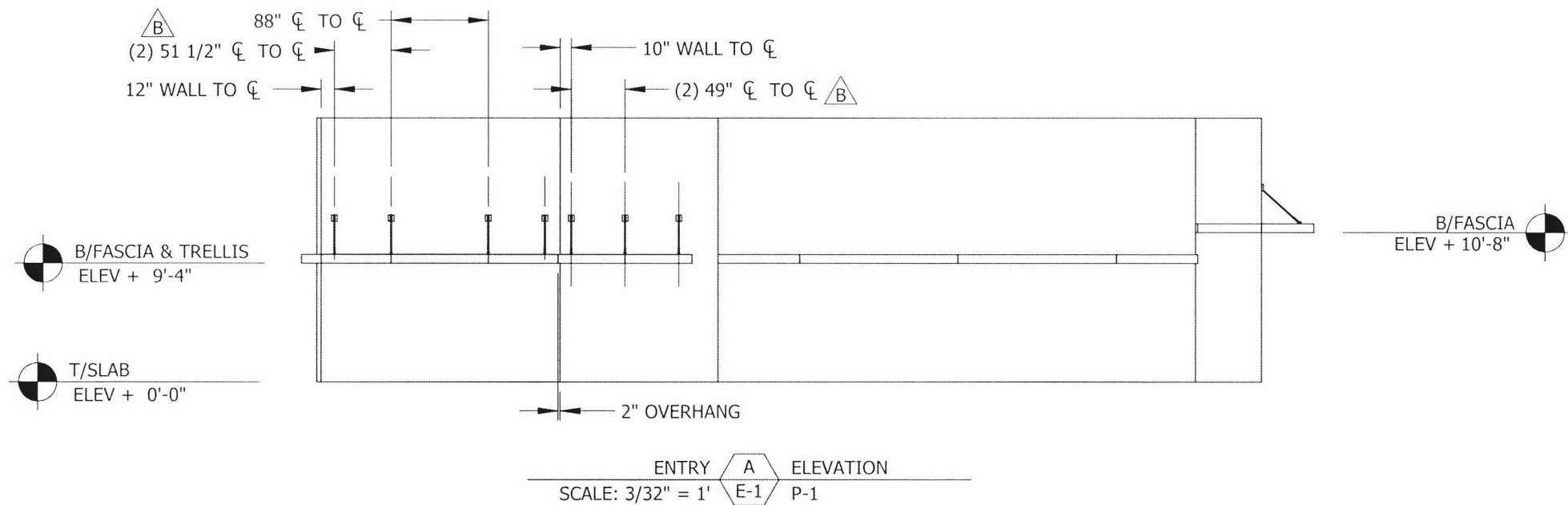
1674063

P-1

REV. NO.	DESCRIPTION	DATE	DRAWN BY
D	REVISED PER MARKUPS	8/1/2018	DP
C	FINAL REVISED SUBMITTAL	1/31/2018	LSW
B	FINAL REVISED SUBMITTAL	11/13/2017	LSW
A	INITIAL RELEASE	8/16/2017	BMG



I:\0 ENGINEERING PROJECTS\MCDONALDS TRELLIS\0 - ATL Trellis Submittals\264399 PORTLAND, OR SITE ID 036-0034\CAD Models\Approval\



**RICE**  
**ENGINEERING**

105 School Creek Trail  
Luxemburg, WI 54217  
Phone: (920)-617-1042  
Fax: (920)-617-1100  
www.rice-inc.com

This Certification is limited to the structural design of the structural components of this sunshade system. It does NOT include responsibility for:

- \* Structural design of glass lites, gaskets, and sealants.
- \* Design of air and water infiltration prevention
- \* The manufacture, assembly, or installation of the system.
- \* Quantities of materials or dimensional accuracy of drawings.

D	REVISED PER MARKUPS	8/1/2018	DP
C	FINAL REVISED SUBMITTAL	1/31/2018	LSW
B	FINAL REVISED SUBMITTAL	11/13/2017	LSW
A	INITIAL RELEASE	8/16/2017	BMG
REV. NO.	DESCRIPTION	DATE	DRAWN BY

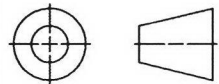
UNLESS OTHERWISE SPECIFIED  
DIMENSION ARE IN INCHES.

TOLERANCE UNLESS NOTED:  
X.X ±0.030  
X.XX ±0.015  
X.XXX ±0.010  
ANGLE ±1°  
FRACTION ±1/16

MAX HOLE BREAKOUT:  
15% OF MATERIAL THICKNESS

5101 Blue Mound Road  
Fort Worth, Texas 76106  
Phone: 817-509-2300  
Fax: 817-831-3110

THIRD ANGLE PROJECTION



**ALL-LITE**  
**ARCHITECTURAL PRODUCTS**

THIS DRAWING AND THE DESIGN REPRESENTED ARE  
THE CONFIDENTIAL AND PROPRIETARY PROPERTY OF  
PCI INDUSTRIES AND MAY NOT BE DISCLOSED, LOANED,  
COPIED, OR USED FOR ANY PURPOSE OTHER THAN DESIGN  
REVIEW AND APPROVAL WITHOUT THE EXPRESS WRITTEN  
CONSENT OF PCI INDUSTRIES.

DRAWING DESCR: ELEVATION VIEWS - ENTRY & REAR

PROJECT: SITE ID 036-0034

LOCATION: 12005 N CENTER ST, PORTLAND, OR 97217

CUSTOMER: MCDONALD'S USA, LLC

PROJ. MGR: ZAC PARKER

DRAWN BY: BMG

DATE: 8/16/2017

CHK'D BY:

ORDER NUMBER

P.O. NUMBER

DRAWING NUMBER

SHEET: 4 of 9

SCALE: AS NOTED

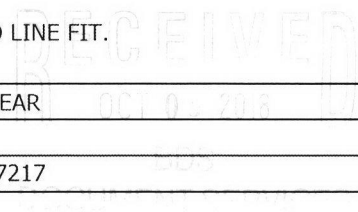
264399

1674063

E-1

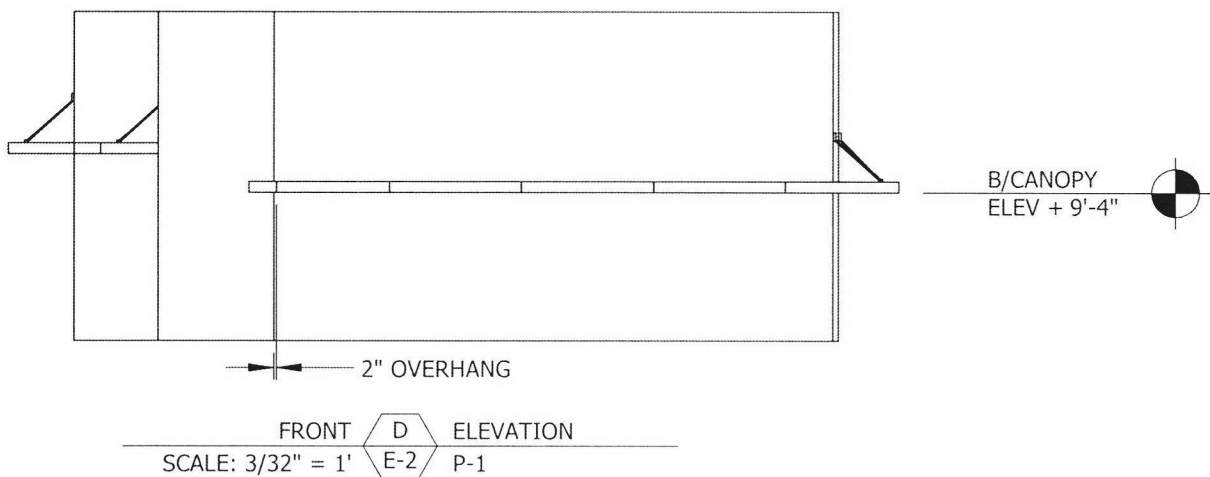
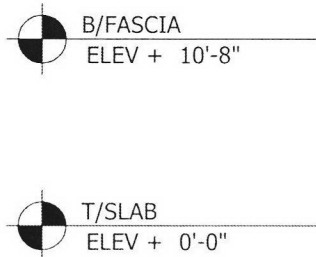
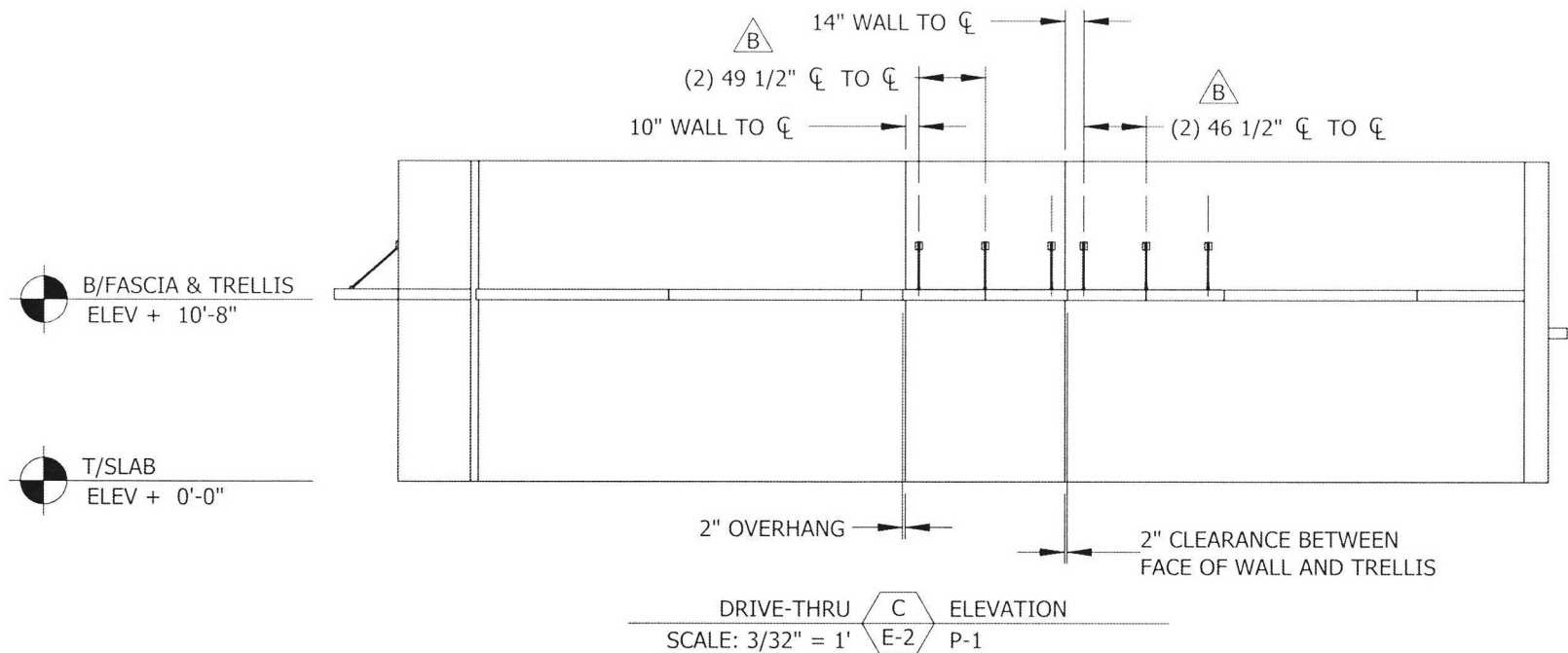
**NOTES:**

1. FASCIA, LINE TO LINE FIT.





I:\0 ENGINEERING PROJECTS\MCDONALDS TRELLIS\0 - ATL Trellis Submittals\264399 PORTLAND, OR SITE ID 036-0034\CAD Models\Approval\



**RICE**  
**ENGINEERING**

105 School Creek Trail  
Luxemburg, WI 54217  
Phone: (920)-617-1042  
Fax: (920)-617-1100  
www.rice-inc.com

This Certification is limited to the structural design of the structural components of this sunshade system. It does NOT include responsibility for:

- \* Structural design of glass lites, gaskets, and sealants.
- \* Design of air and water infiltration prevention
- \* The manufacture, assembly, or installation of the system.
- \* Quantities of materials or dimensional accuracy of drawings.

D	REVISED PER MARKUPS	8/1/2018	DP
C	FINAL REVISED SUBMITTAL	1/31/2018	LSW
B	FINAL REVISED SUBMITTAL	11/13/2017	LSW
A	INITIAL RELEASE	8/16/2017	BMG
REV. NO.	DESCRIPTION	DATE	DRAWN BY

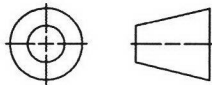
UNLESS OTHERWISE SPECIFIED  
DIMENSION ARE IN INCHES.

TOLERANCE UNLESS NOTED:  
X.X ±0.030  
X.XX ±0.015  
X.XXX ±0.010  
ANGLE ±1°  
FRACTION ±1/16

MAX HOLE BREAKOUT:  
15% OF MATERIAL THICKNESS

5101 Blue Mound Road  
Fort Worth, Texas 76106  
Phone: 817-509-2300  
Fax: 817-831-3110

THIRD ANGLE PROJECTION



**ALL-LITE**  
**ARCHITECTURAL PRODUCTS**

THIS DRAWING AND THE DESIGN REPRESENTED ARE THE CONFIDENTIAL AND PROPRIETARY PROPERTY OF PCI INDUSTRIES AND MAY NOT BE DISCLOSED, LOANED, COPIED, OR USED FOR ANY PURPOSE OTHER THAN DESIGN REVIEW AND APPROVAL WITHOUT THE EXPRESS WRITTEN CONSENT OF PCI INDUSTRIES.

**NOTES:**

1. FASCIA, LINE TO LINE FIT.

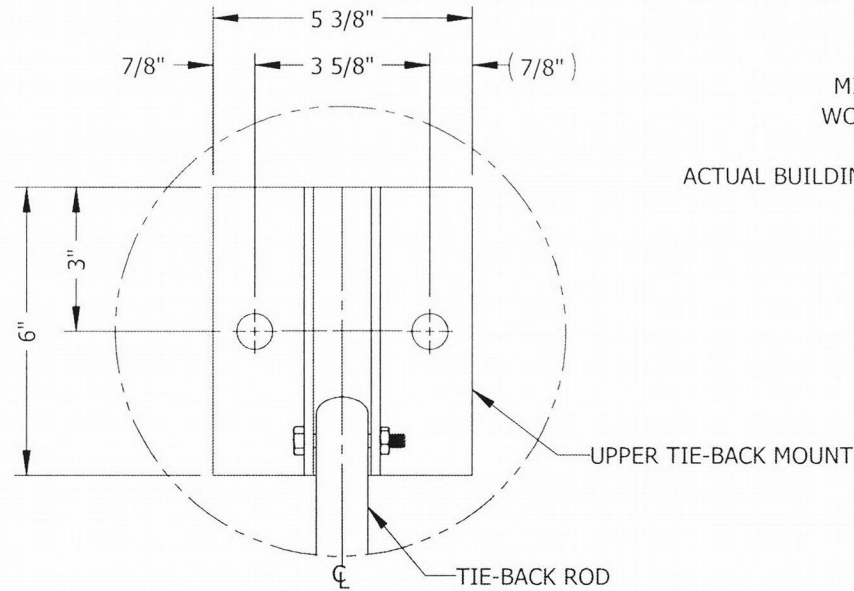
DRAWING DESCR: ELEVATION VIEWS - FRONT & DRIVE-THRU				
PROJECT: SITE ID 036-0034				
LOCATION: 12005 N CENTER ST, PORTLAND, OR 97217				
CUSTOMER: MCDONALD'S USA, LLC				
PROJ. MGR: ZAC PARKER		DRAWN BY: BMG		
DATE: 8/16/2017	CHK'D BY:	ORDER NUMBER	P.O. NUMBER	DRAWING NUMBER
SHEET: 5 of 9	SCALE: AS NOTED	264399	1674063	E-2

RICE  
ENGINEERING

105 School Creek Trail  
Luxemburg, WI 54217  
Phone: (920)-617-1042  
Fax: (920)-617-1100  
www.rice-inc.com

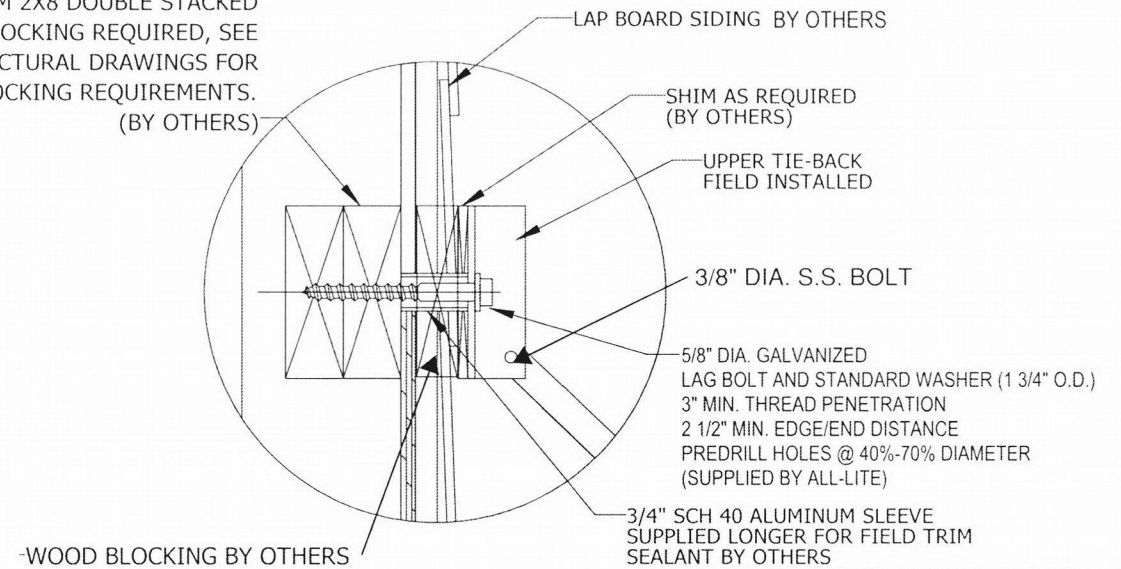
This Certification is limited to the structural design of the structural components of this sunshade system. It does NOT include responsibility for:

- \* Structural design of glass lites, gaskets, and sealants.
- \* Design of air and water infiltration prevention
- \* The manufacture, assembly, or installation of the system.
- \* Quantities of materials or dimensional accuracy of drawings.



UPPER TIE-BACK BOLT LOCATION  
SCALE: 3" = 1' D-1

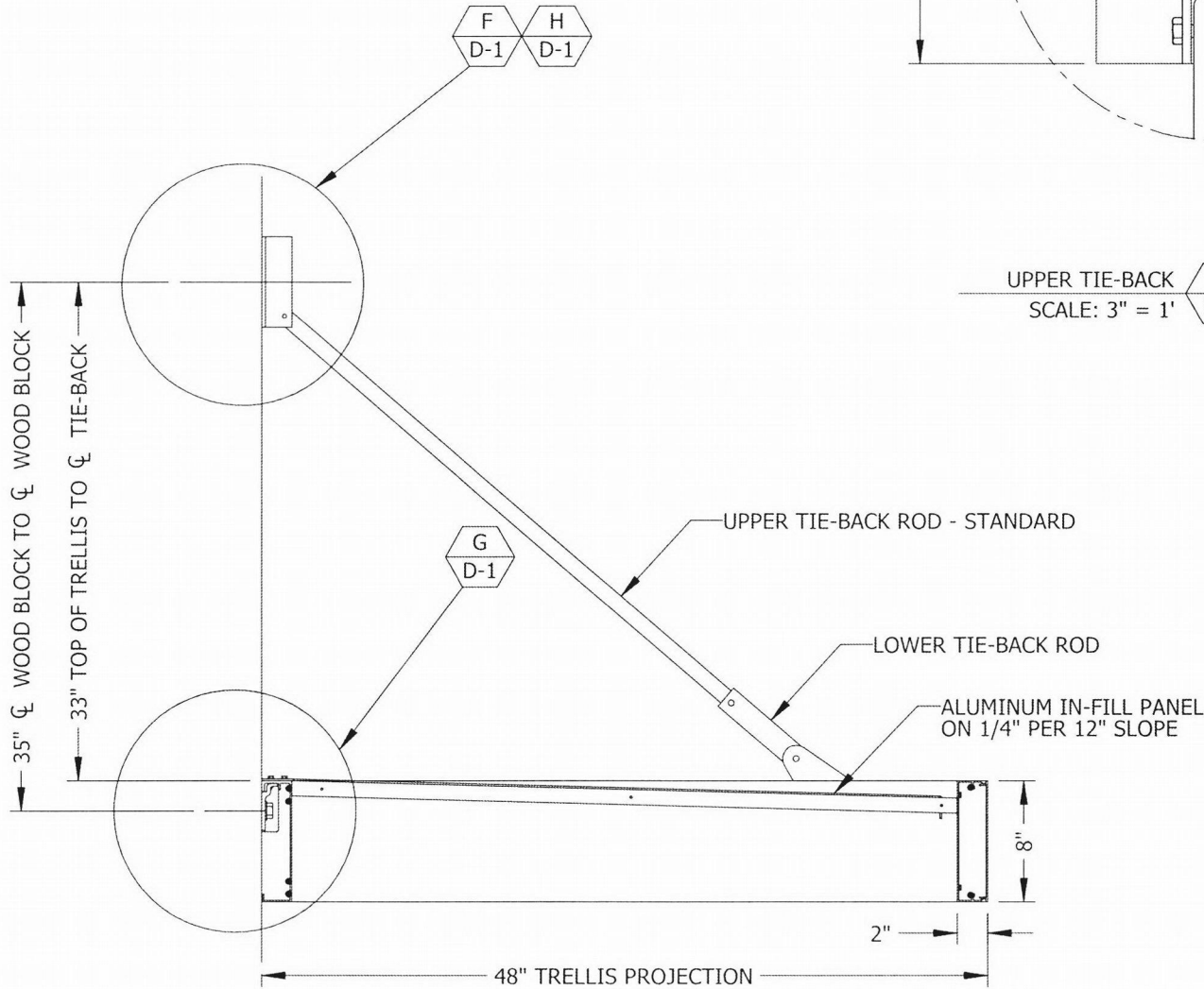
MINIMUM 2X8 DOUBLE STACKED  
WOOD BLOCKING REQUIRED, SEE  
STRUCTURAL DRAWINGS FOR  
ACTUAL BUILDING BLOCKING REQUIREMENTS.  
(BY OTHERS)



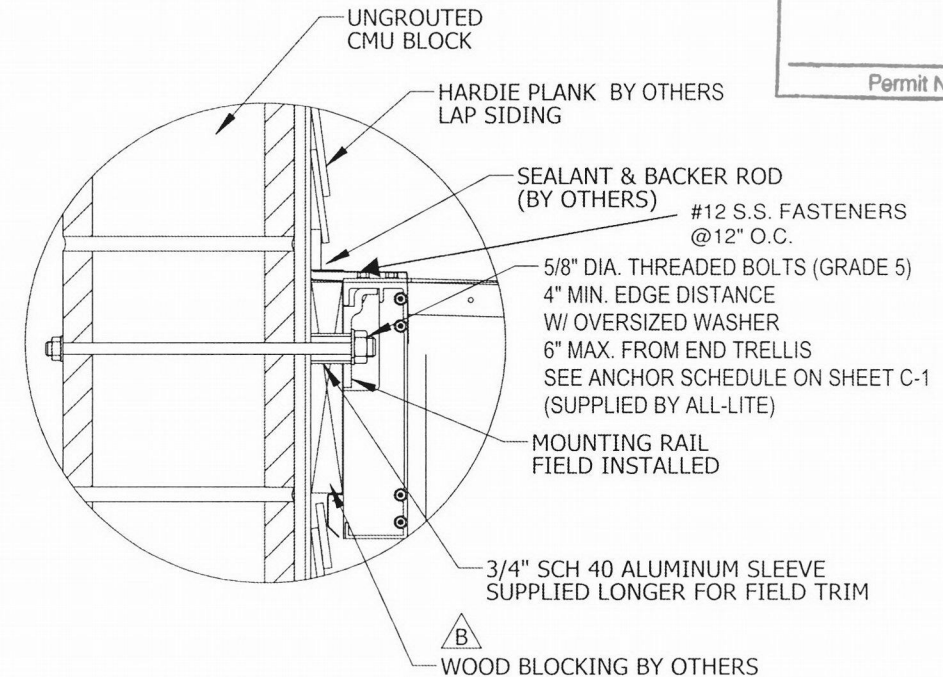
TRELLIS TIE-BACK DETAIL  
SCALE: 2" = 1' D-1

City of Portland  
REVIEWED FOR CODE  
COMPLIANCE  
OCT 17 2018

Permit Number



TYPICAL TRELLIS SECTION  
SCALE: 1" = 1' D-1



TRELLIS MOUNTING DETAIL  
SCALE: 2" = 1' D-1



08/16/2018  
EXPIRES: 6/30/19

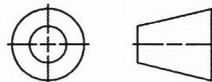
UNLESS OTHERWISE SPECIFIED  
DIMENSION ARE IN INCHES.

TOLERANCE UNLESS NOTED:  
X.X ±0.030  
X.XX ±0.015  
X.XXX ±0.010  
ANGLE ±1°  
FRACTION ±1/16

MAX HOLE BREAKOUT:  
15% OF MATERIAL THICKNESS

5101 Blue Mound Road  
Fort Worth, Texas 76106  
Phone: 817-509-2300  
Fax: 817-831-3110

THIRD ANGLE PROJECTION



ALL-LITE  
ARCHITECTURAL PRODUCTS

THIS DRAWING AND THE DESIGN REPRESENTED ARE  
THE CONFIDENTIAL AND PROPRIETARY PROPERTY OF  
PCI INDUSTRIES AND MAY NOT BE DISCLOSED, LOANED,  
COPIED, OR USED FOR ANY PURPOSE OTHER THAN DESIGN  
REVIEW AND APPROVAL WITHOUT THE EXPRESS WRITTEN  
CONSENT OF PCI INDUSTRIES.

DRAWING DESCR: TRELLIS SECTION & DETAIL VIEWS

PROJECT: SITE ID 036-0034

LOCATION: 12005 N CENTER ST, PORTLAND, OR 97217

CUSTOMER: MCDONALD'S USA, LLC

PROJ. MGR: ZAC PARKER

DRAWN BY: BMG

DATE: 8/16/2017

CHK'D BY:

ORDER NUMBER

P.O. NUMBER

DRAWING NUMBER

SHEET: 6 of 9

SCALE: AS NOTED

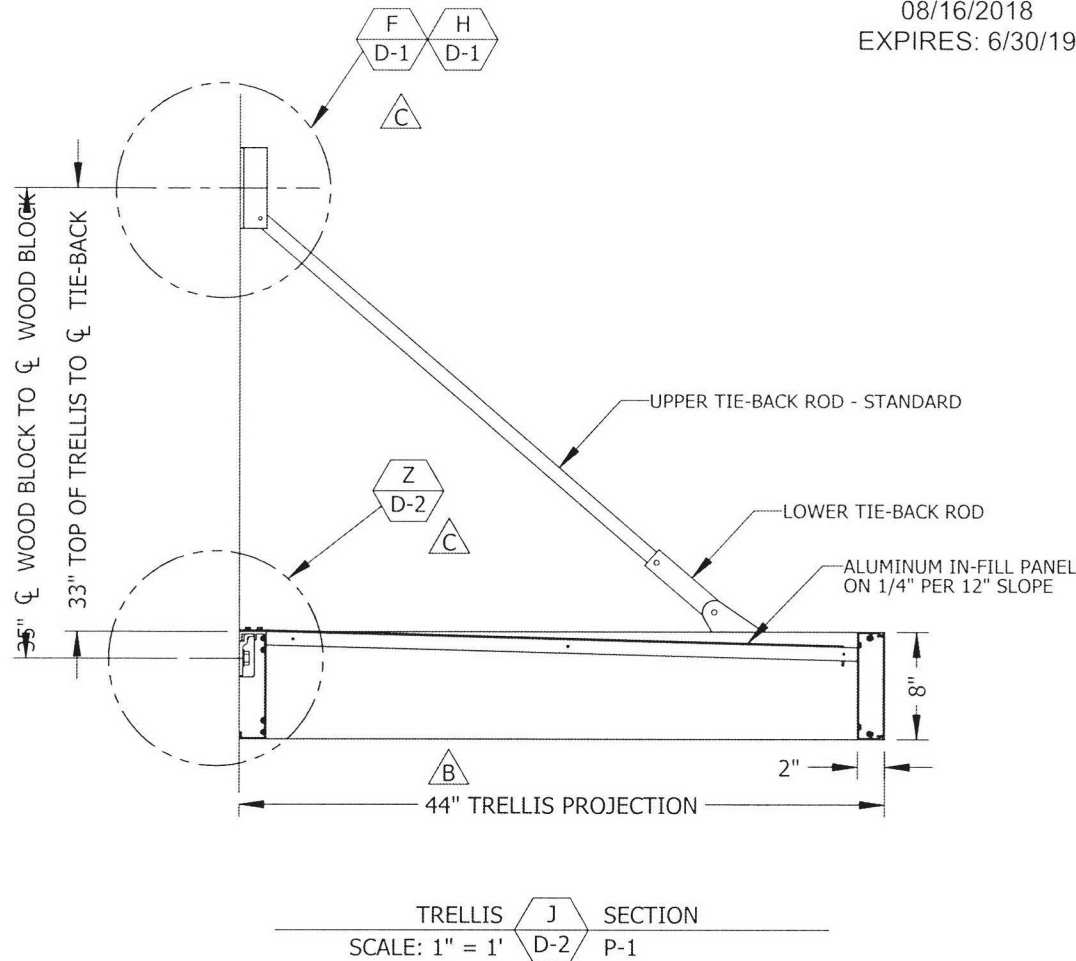
264399

1674063

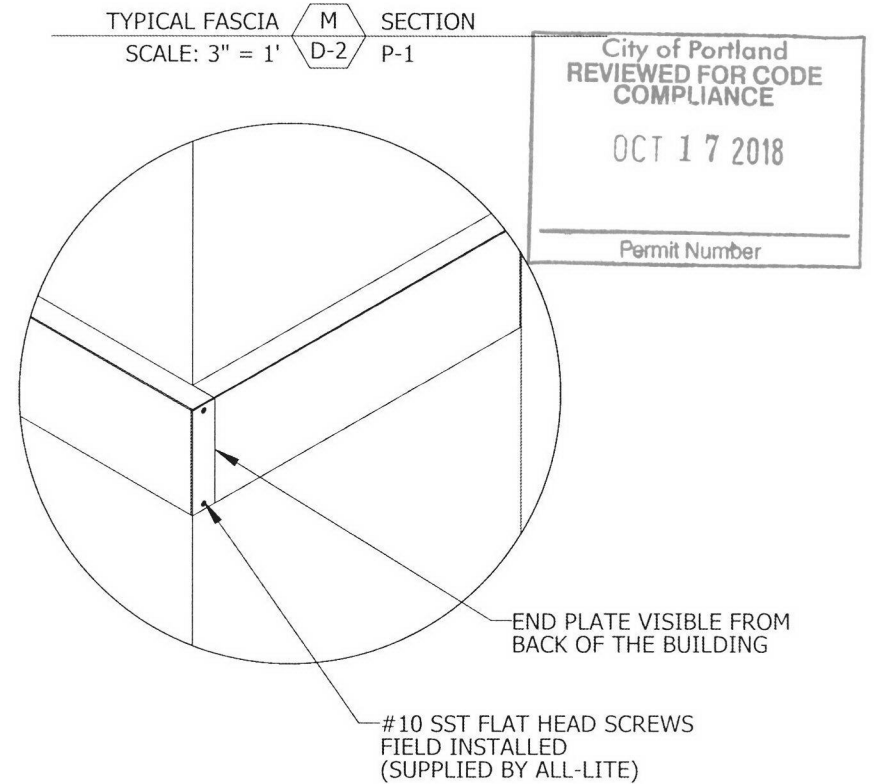
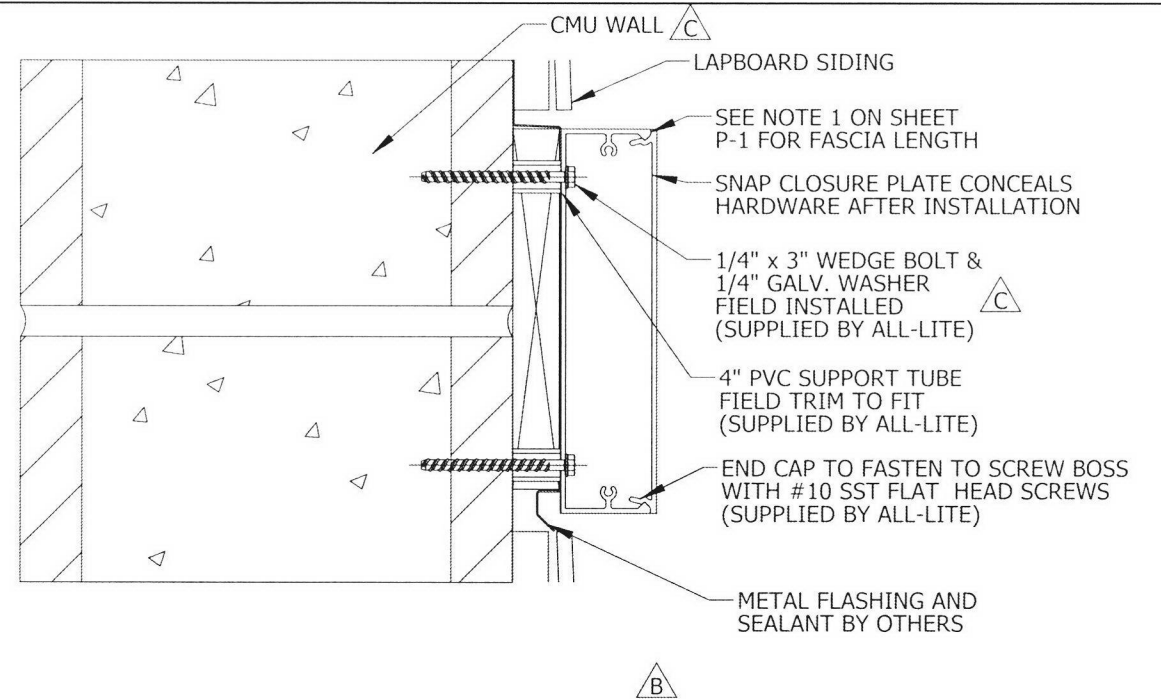
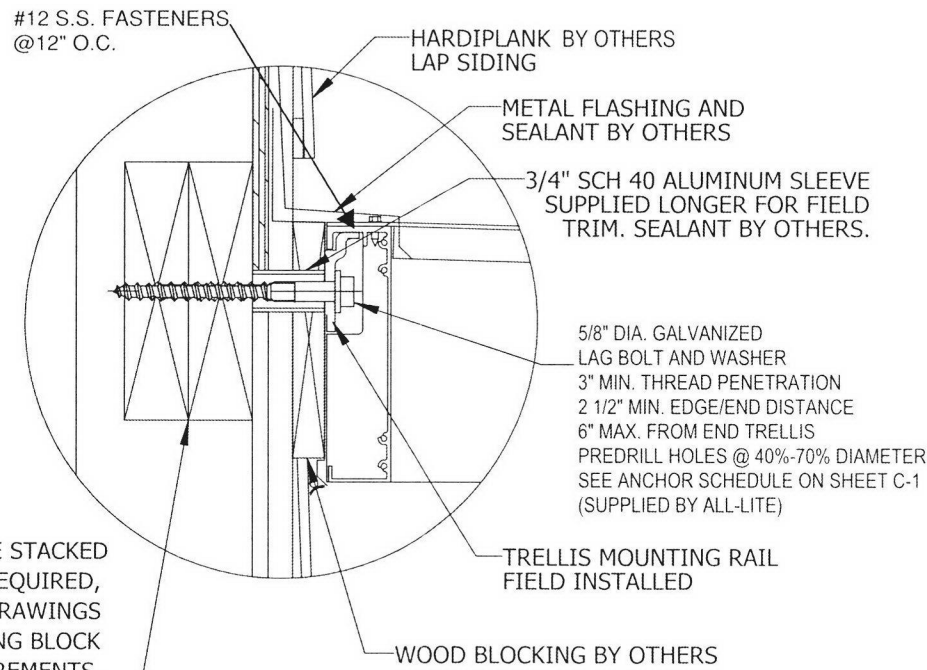
D-1

REV. NO.	DESCRIPTION	DATE	DRAWN BY
D	REVISED PER MARKUPS	8/1/2018	DP
C	FINAL REVISED SUBMITTAL	1/31/2018	LSW
B	FINAL REVISED SUBMITTAL	11/13/2017	LSW
A	INITIAL RELEASE	8/16/2017	BMG

I:\0 ENGINEERING PROJECTS\MCDONALDS TRELLIS\0 - ATL Trellis Submittals\264399 PORTLAND, OR SITE ID 036-0034\CAD Models\Approval\



MINIMUM 2X8 DOUBLE STACKED WOOD BLOCKING REQUIRED, SEE STRUCTURAL DRAWINGS FOR ACTUAL BUILDING BLOCK REQUIREMENTS. (BY OTHERS)



City of Portland  
REVIEWED FOR CODE  
COMPLIANCE  
OCT 17 2018  
Permit Number

## RICE ENGINEERING

105 School Creek Trail  
Luxemburg, WI 54217  
Phone: (920)-617-1042  
Fax: (920)-617-1100  
www.rice-inc.com

This Certification is limited to the structural design of the structural components of this sunshade system. It does NOT include responsibility for:

- \* Structural design of glass lites, gaskets, and sealants.
- \* Design of air and water infiltration prevention
- \* The manufacture, assembly, or installation of the system.
- \* Quantities of materials or dimensional accuracy of drawings.

D	REVISED PER MARKUPS	8/1/2018	DP
C	FINAL REVISED SUBMITTAL	1/31/2018	LSW
B	FINAL REVISED SUBMITTAL	11/13/2017	LSW
A	INITIAL RELEASE	8/16/2017	BMG
REV. NO.	DESCRIPTION	DATE	DRAWN BY

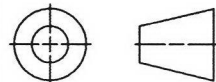
UNLESS OTHERWISE SPECIFIED  
DIMENSION ARE IN INCHES.

TOLERANCE UNLESS NOTED:  
X.X ±0.030  
X.XX ±0.015  
X.XXX ±0.010  
ANGLE ±1°  
FRACTION ±1/16

MAX HOLE BREAKOUT:  
15% OF MATERIAL THICKNESS

5101 Blue Mound Road  
Fort Worth, Texas 76106  
Phone: 817-509-2300  
Fax: 817-831-3110

THIRD ANGLE PROJECTION



## ALL-LITE ARCHITECTURAL PRODUCTS

THIS DRAWING AND THE DESIGN REPRESENTED ARE THE CONFIDENTIAL AND PROPRIETARY PROPERTY OF PCI INDUSTRIES AND MAY NOT BE DISCLOSED, LOANED, COPIED, OR USED FOR ANY PURPOSE OTHER THAN DESIGN REVIEW AND APPROVAL WITHOUT THE EXPRESS WRITTEN CONSENT OF PCI INDUSTRIES.

DRAWING DESCR: TRELLIS SECTION & DETAIL VIEWS

PROJECT: SITE ID 036-0034

LOCATION: 12005 N CENTER ST, PORTLAND, OR 97217

CUSTOMER: MCDONALD'S USA, LLC

PROJ. MGR: ZAC PARKER

DRAWN BY: BMG

DATE: 8/16/2017

CHK'D BY:

ORDER NUMBER

P.O. NUMBER

DRAWING NUMBER

SHEET: 7 of 9

SCALE: AS NOTED

264399

1674063

D-2

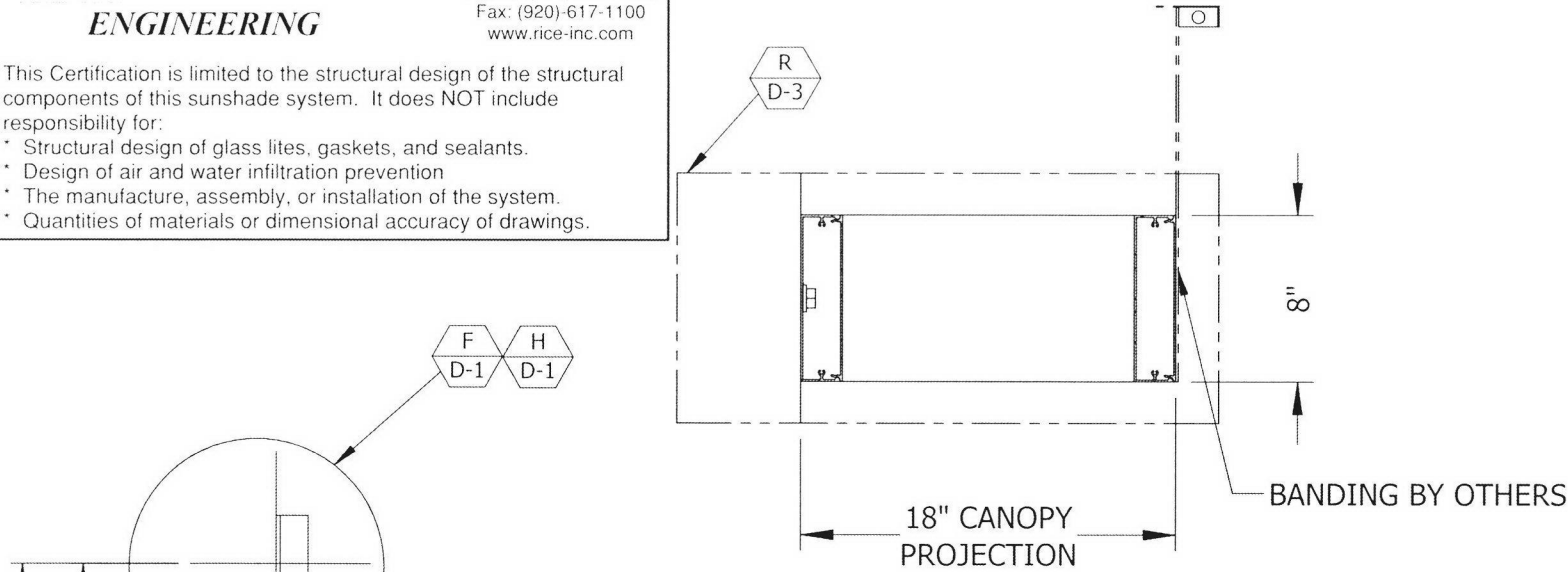


RICE  
ENGINEERING

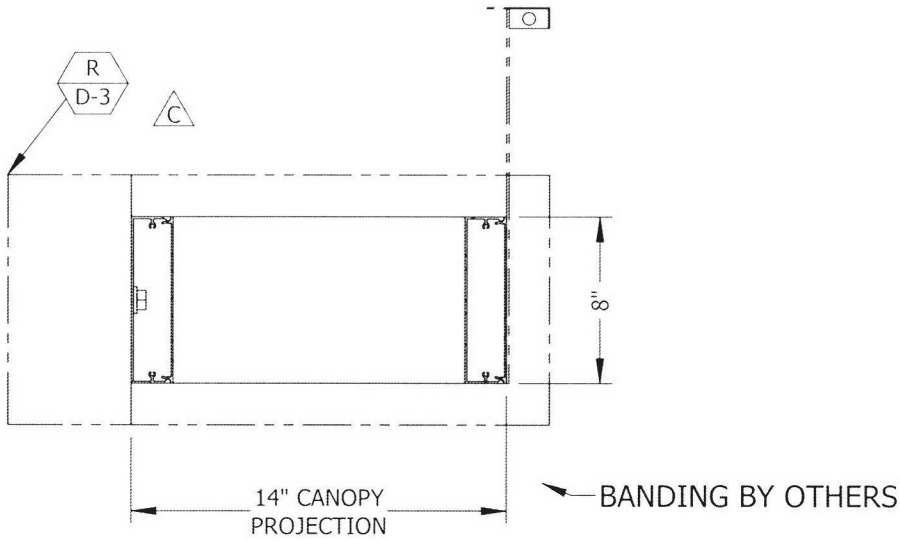
105 School Creek Trail  
Luxemburg, WI 54217  
Phone: (920)-617-1042  
Fax: (920)-617-1100  
www.rice-inc.com

This Certification is limited to the structural design of the structural components of this sunshade system. It does NOT include responsibility for:

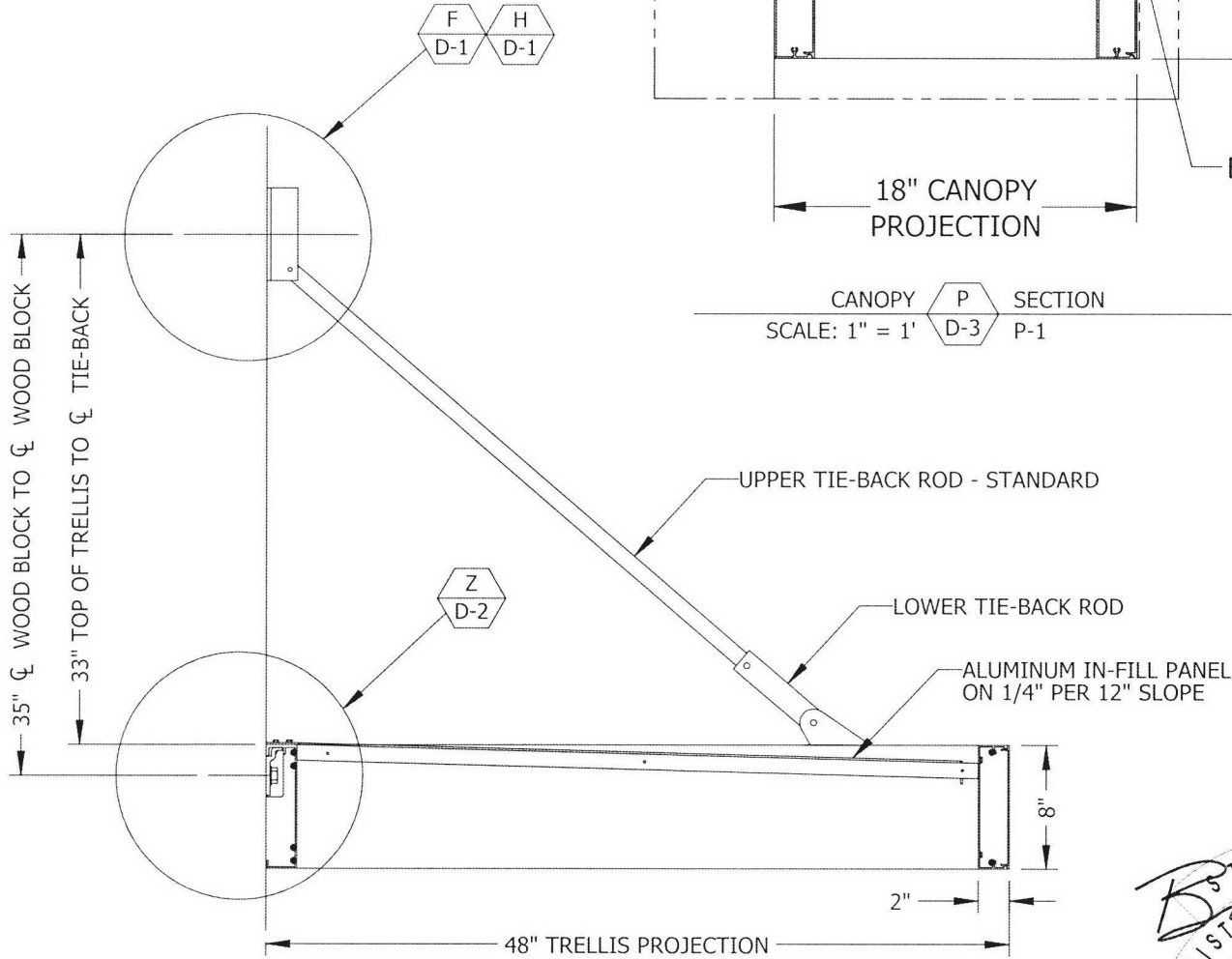
- \* Structural design of glass lites, gaskets, and sealants.
- \* Design of air and water infiltration prevention
- \* The manufacture, assembly, or installation of the system.
- \* Quantities of materials or dimensional accuracy of drawings.



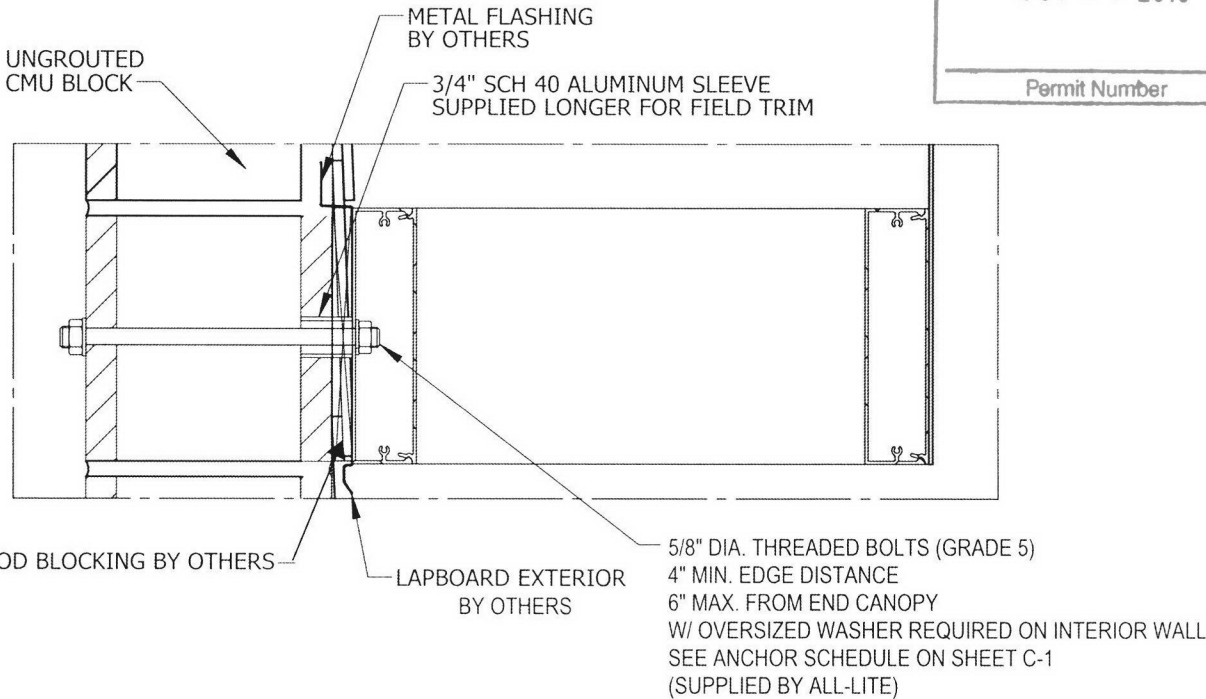
CANOPY P SECTION  
SCALE: 1" = 1' D-3 P-1



CANOPY Q SECTION  
SCALE: 1" = 1' D-3 P-1

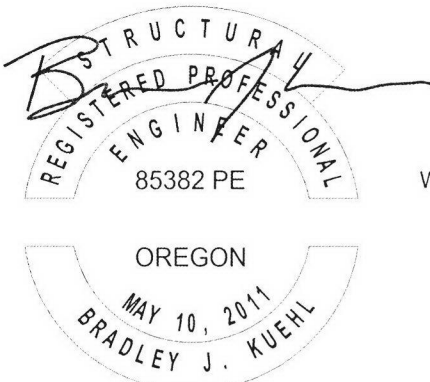


CANOPY W SECTION  
SCALE: 1" = 1' D-3 P-1



CANOPY R MOUNTING DETAIL  
SCALE: 2" = 1' D-3 D-3

City of Portland  
REVIEWED FOR CODE COMPLIANCE  
OCT 17 2018  
Permit Number



08/16/2018  
EXPIRES: 6/30/19

D	REVISED PER MARKUPS	8/1/2018	DP
C	FINAL REVISED SUBMITTAL	1/31/2018	LSW
B	FINAL REVISED SUBMITTAL	11/13/2017	LSW
A	INITIAL RELEASE	8/16/2017	BMG
REV. NO.	DESCRIPTION	DATE	DRAWN BY

UNLESS OTHERWISE SPECIFIED DIMENSION ARE IN INCHES.	5101 Blue Mound Road Fort Worth, Texas 76106 Phone: 817-509-2300 Fax: 817-831-3110
TOLERANCE UNLESS NOTED: X.X ±0.030 X.XX ±0.015 X.XXX ±0.010 ANGLE ±1° FRACTION ±1/16	THIRD ANGLE PROJECTION
MAX HOLE BREAKOUT: 15% OF MATERIAL THICKNESS	

ALL-LITE  
ARCHITECTURAL PRODUCTS

THIS DRAWING AND THE DESIGN REPRESENTED ARE THE CONFIDENTIAL AND PROPRIETARY PROPERTY OF PCI INDUSTRIES AND MAY NOT BE DISCLOSED, LOANED, COPIED, OR USED FOR ANY PURPOSE OTHER THAN DESIGN REVIEW AND APPROVAL WITHOUT THE EXPRESS WRITTEN CONSENT OF PCI INDUSTRIES.

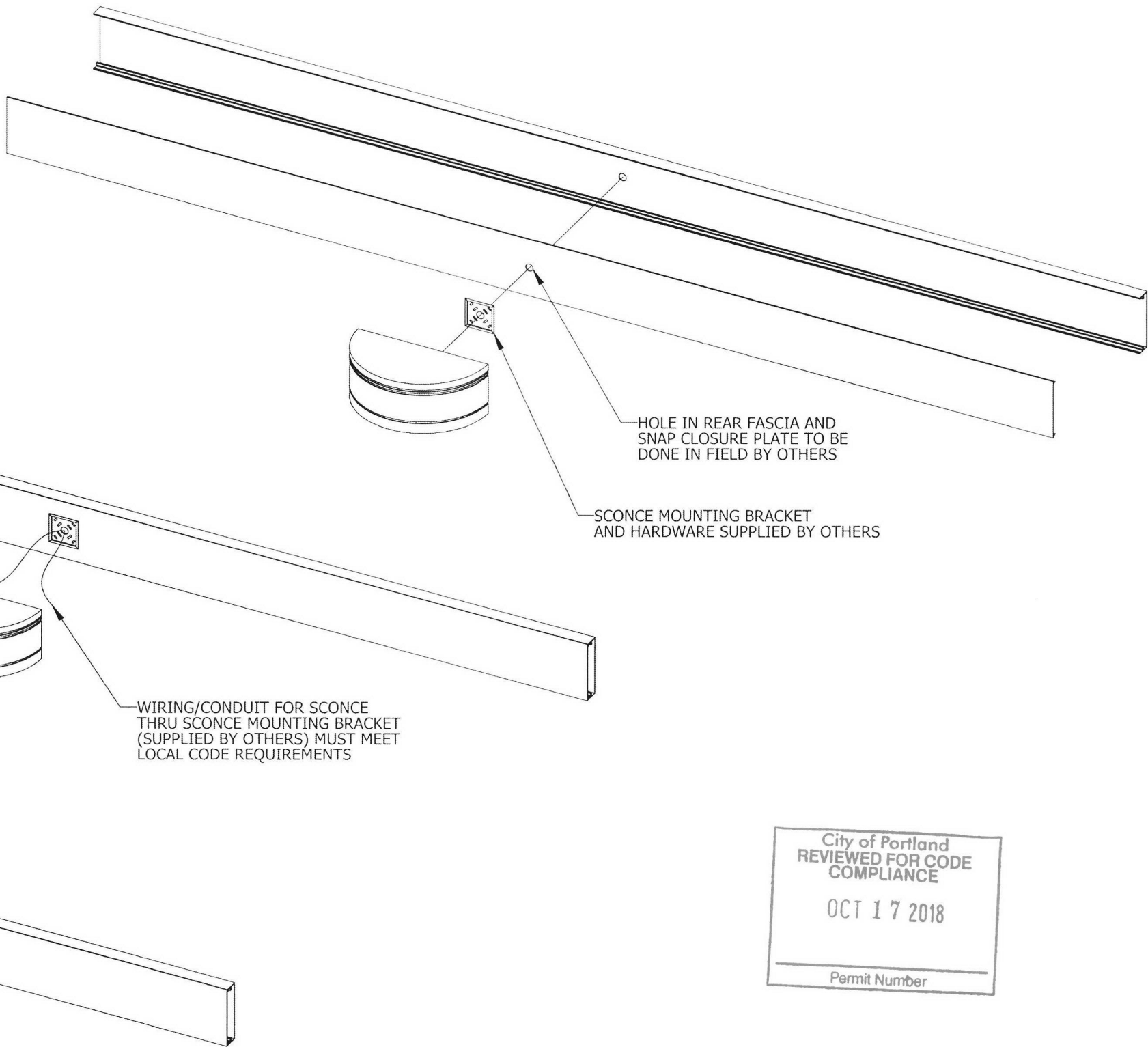
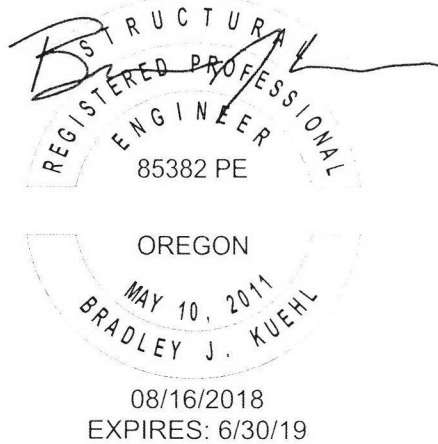
DRAWING DESCR: TRELLIS SECTION & DETAIL VIEWS				
PROJECT: SITE ID 036-0034				
LOCATION: 12005 N CENTER ST, PORTLAND, OR 97217				
CUSTOMER: MCDONALD'S USA, LLC				
PROJ. MGR: ZAC PARKER		DRAWN BY: BMG		
DATE: 8/16/2017	CHK'D BY:	ORDER NUMBER	P.O. NUMBER	DRAWING NUMBER
SHEET: 8 of 9	SCALE: AS NOTED	264399	1674063	D-3

RICE  
ENGINEERING

105 School Creek Trail  
Luxemburg, WI 54217  
Phone: (920)-617-1042  
Fax: (920)-617-1100  
www.rice-inc.com

This Certification is limited to the structural design of the structural components of this sunshade system. It does NOT include responsibility for:

- \* Structural design of glass lites, gaskets, and sealants.
- \* Design of air and water infiltration prevention
- \* The manufacture, assembly, or installation of the system.
- \* Quantities of materials or dimensional accuracy of drawings.



D	REVISED PER MARKUPS	8/1/2018	DP
C	FINAL REVISED SUBMITTAL	1/31/2018	LSW
B	FINAL REVISED SUBMITTAL	11/13/2017	LSW
A	INITIAL RELEASE	8/16/2017	BMG
REV. NO.	DESCRIPTION	DATE	DRAWN BY

UNLESS OTHERWISE SPECIFIED DIMENSION ARE IN INCHES.	
TOLERANCE UNLESS NOTED:	
X.X ±0.030	
X.XX ±0.015	
X.XXX ±0.010	
ANGLE ±1°	
FRACTION ±1/16	
MAX HOLE BREAKOUT: 15% OF MATERIAL THICKNESS	

5101 Blue Mound Road  
Fort Worth, Texas 76106  
Phone: 817-509-2300

THIRD ANGLE PROJECTION

ALL-LITE  
ARCHITECTURAL PRODUCTS

THIS DRAWING AND THE DESIGN REPRESENTED ARE THE CONFIDENTIAL AND PROPRIETARY PROPERTY OF PCI INDUSTRIES AND MAY NOT BE DISCLOSED, LOANED, COPIED, OR USED FOR ANY PURPOSE OTHER THAN DESIGN REVIEW AND APPROVAL WITHOUT THE EXPRESS WRITTEN CONSENT OF PCI INDUSTRIES.

DRAWING DESCR: SCENCE DETAIL				
PROJECT: SITE ID 036-0034				
LOCATION: 12005 N CENTER ST, PORTLAND, OR 97217				
CUSTOMER: MCDONALD'S USA, LLC				
PROJ. MGR: ZAC PARKER		DRAWN BY: BMG		
DATE: 8/16/2017	CHK'D BY:	ORDER NUMBER	P.O. NUMBER	DRAWING NUMBER
SHEET: 9 of 9	SCALE: NTS	264399	1674063	D-4