



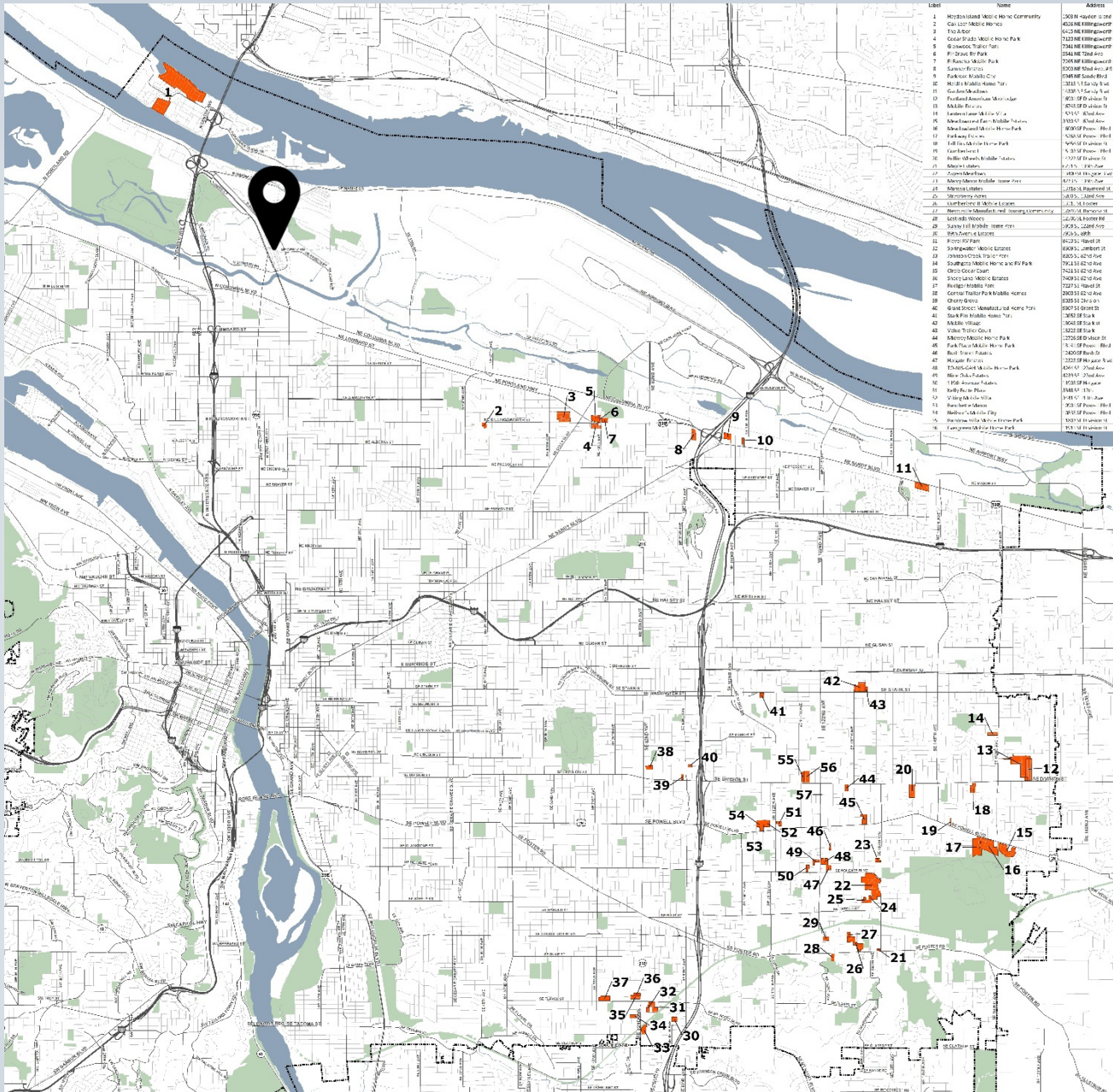
Fox Run Manufactured Dwelling Park Map Changes

PSC Hearing
October 9, 2018



Bureau of Planning and Sustainability
Innovation. Collaboration. Practical Solutions.



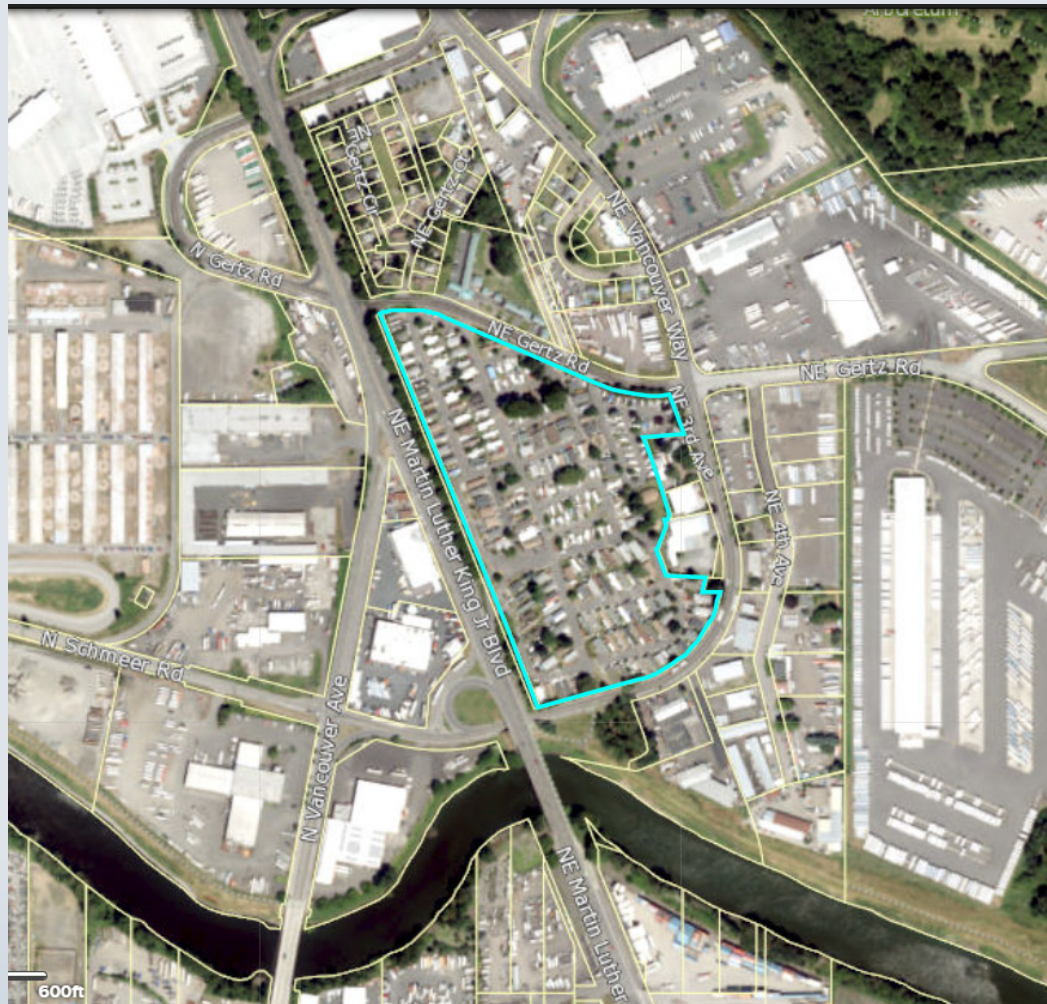


Proposed Changes

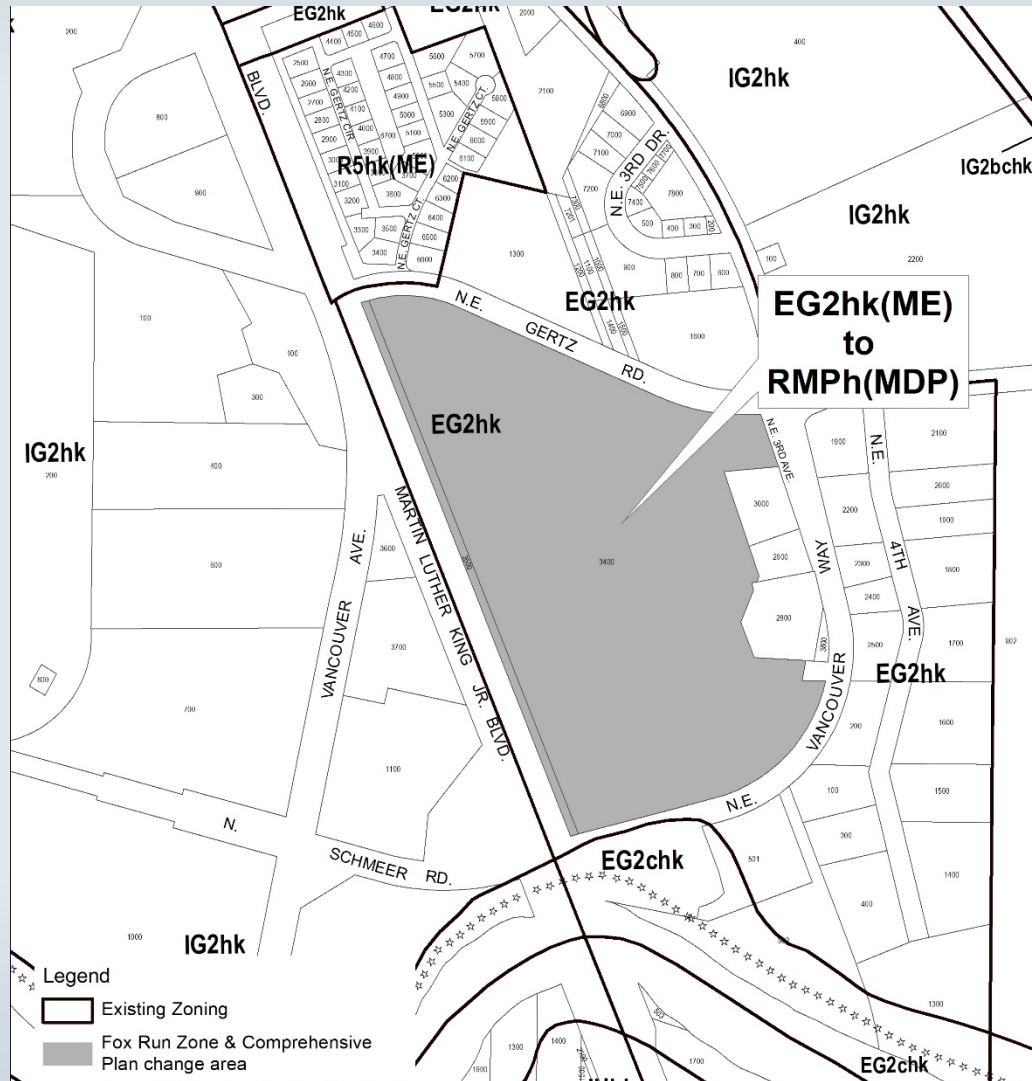
- **Comprehensive Plan Map Amendment**
Mixed Employment (ME) to Manufactured Dwelling Park (MDP)
- **Figure 6-1 amendment**
Remove from Prime Industrial Area
- **Zoning Map Change**
General Employment 2 (EG2) to Residential Manufactured Dwelling Park (RMP)
Remove Prime Industrial (k) overlay zone



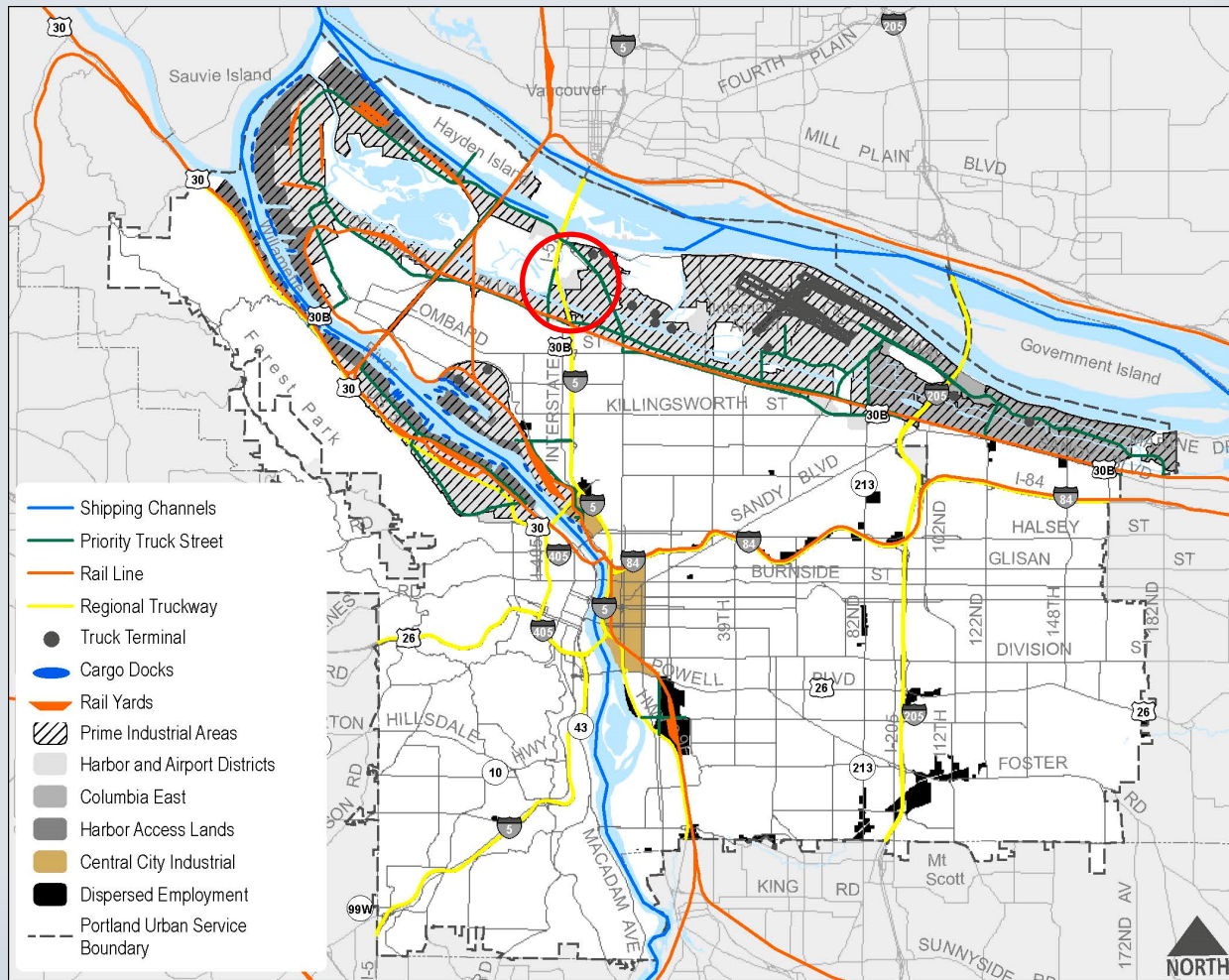
Map Amendments



Map Amendments



Prime Industrial Areas



Prime Industrial Land Change

- Fox Run MDP is existing development.
- Location lacks access to river or railroad.
- Mixed Employment zoning allows wide range of uses.
- Employment Development Capacity will still have a surplus capacity.



Employment Capacity

Harbor and Airport Districts	Change	Surplus Land Supply
2016 EOA		54 acres
2016 Harbor Access Land shortfall	-25 acres	29 acres
MDP map changes	-5 acres	24 acres
Fox Run MDP	-13.5 acres	10 acres

