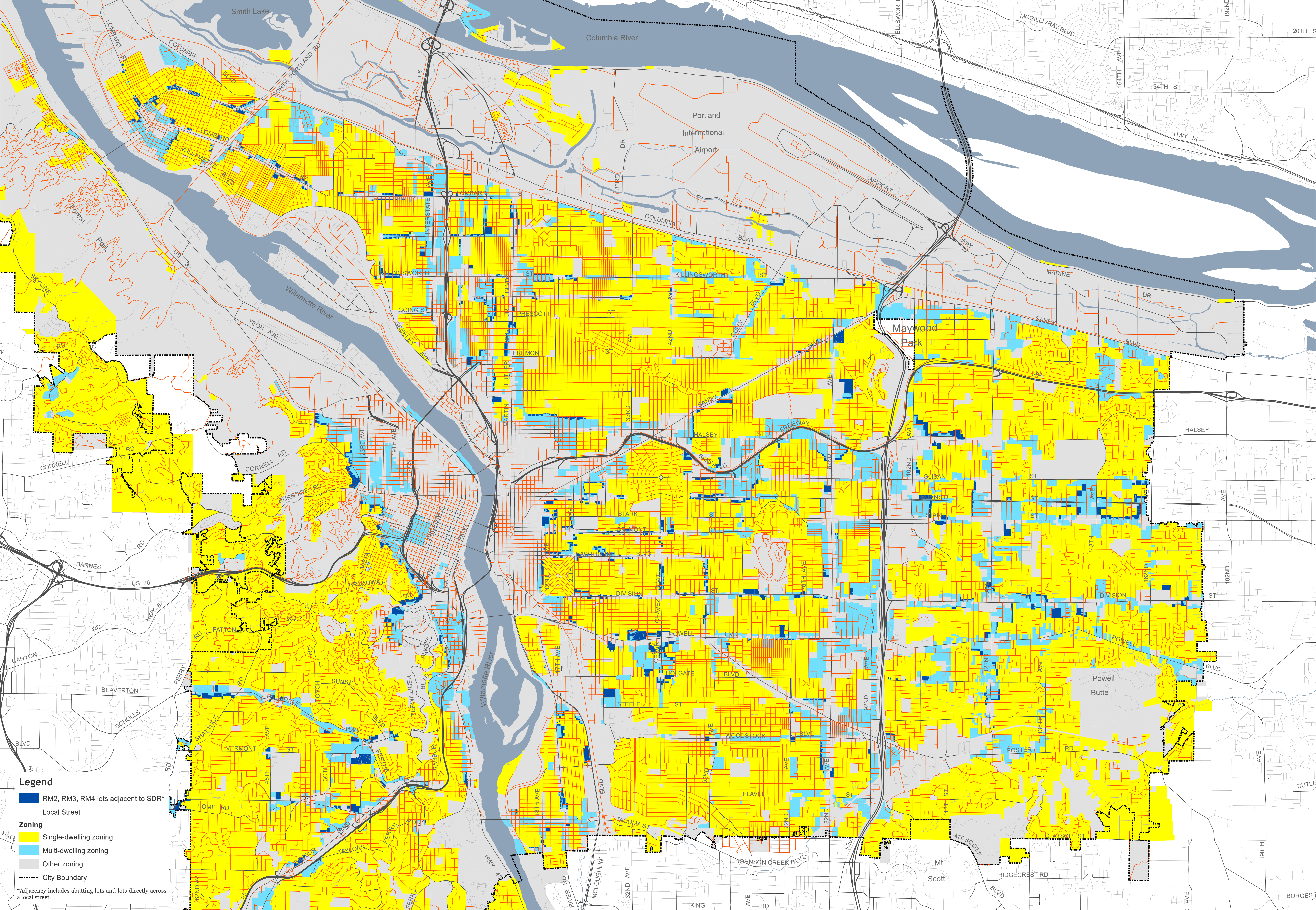


Multi-dwelling Lots Adjacent to Single-dwelling Lots



Legend

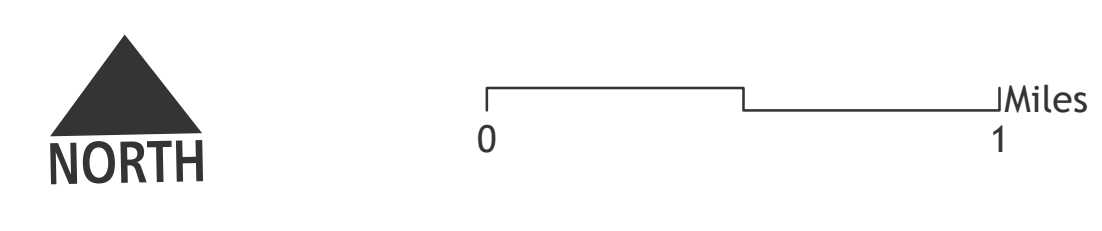
- RM2, RM3, RM4 lots adjacent to SDR*
- Local Street
- Single-dwelling zoning
- Multi-dwelling zoning
- Other zoning
- City Boundary

*Adjacency includes abutting lots and lots directly across a local street.

August 24, 2018
 City of Portland, Oregon // Bureau of Planning & Sustainability // Geographic Information System

The information on this map was derived from City of Portland GIS databases. Care was taken in the creation of this map but it is provided "as is". The City of Portland cannot accept any responsibility for error, omissions or positional accuracy.

The City of Portland ensures meaningful access to city programs, services, and activities to comply with Civil Rights Title VI and ADA Title II laws and reasonably provides: translation, interpretation, modifications, accommodations, alternative formats, auxiliary aids and services. To request these services, contact 503-823-7700, City TTY 503-823-6868, Relay Service: 711.



Bureau of Planning and Sustainability
 Innovation. Collaboration. Practical Solutions.
 City of Portland, Oregon
 Ted Wheeler, Mayor • Susan Anderson, Director

