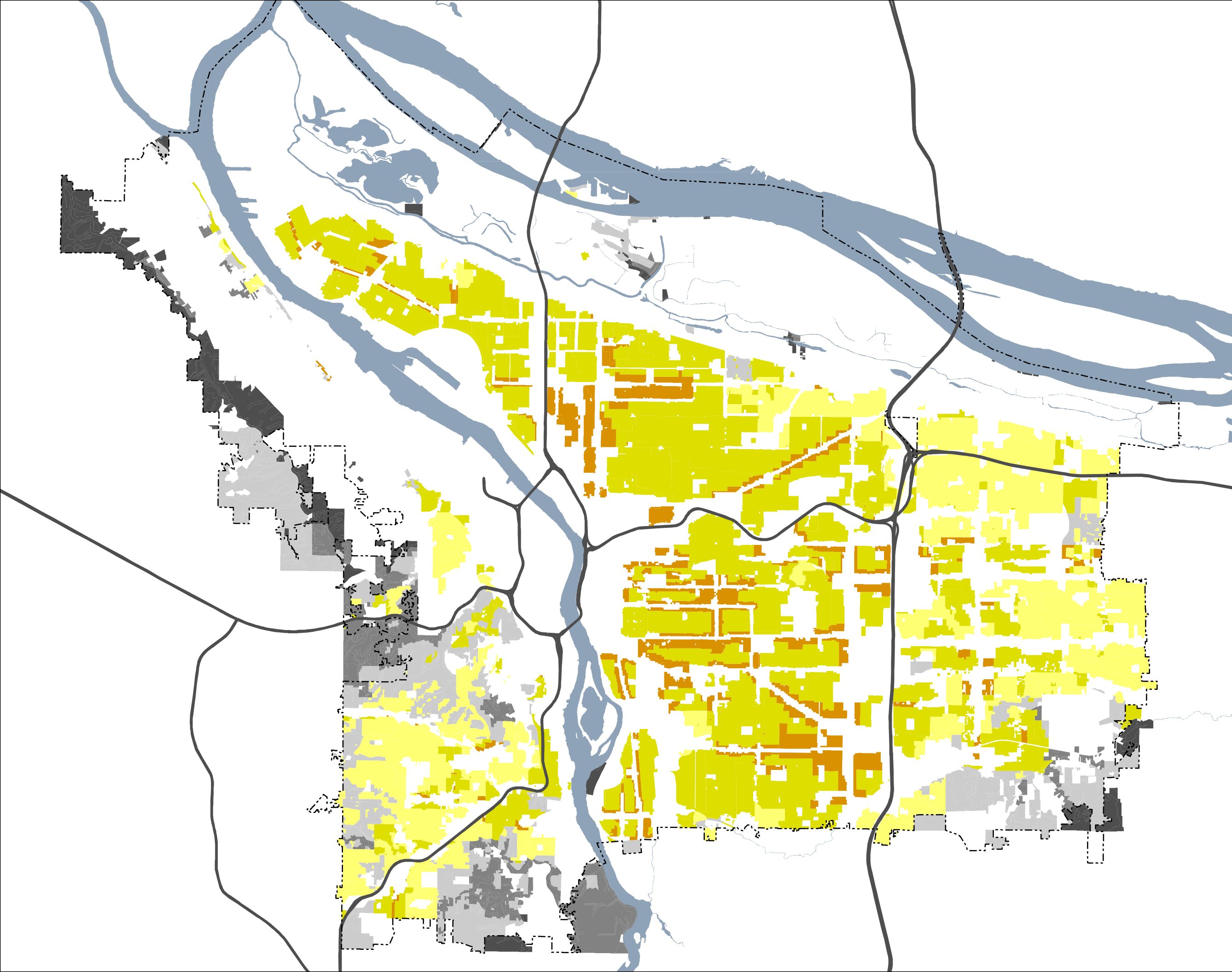


June 19, 2018

City of Portland, Oregon  
Bureau of Planning & Sustainability  
Geographic Information System

# Residential Infill Project

Map 9  
All Layers



The information on this map was derived from City of Portland GIS databases. Care was taken in the creation of this map but it is provided "as is". The City of Portland cannot accept any responsibility for error, omissions or positional accuracy.

The City of Portland ensures meaningful access to city programs, services, and activities to comply with Civil Rights Title VI and ADA Title II laws and reasonably provides: translation, interpretation, modifications, accommodations, alternative formats, auxiliary aids and services. To request these services, contact 503-823-7700, City TTY 503-823-6868, Relay Service: 711.



**Bureau of Planning and Sustainability**  
Innovation. Collaboration. Practical Solutions.



City of Portland, Oregon  
Ted Wheeler, Mayor • Susan Anderson, Director