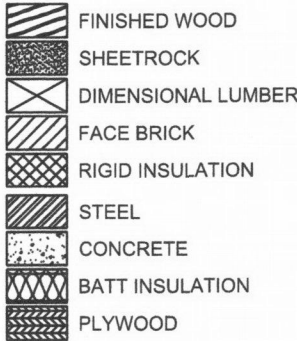


SYMBOL LEGEND



DENOTES BLOCKING OR SHIM. NOT NECESSARILY CONTINUOUS

CAULKING AND BACKER ROD

WINDOW TYPE  
ELEVATION LOCATION / VIEWPOINT  
ELEVATION SHEET NUMBER

DETAIL NUMBER  
DETAIL NAME  
SCALE: 1/4" = 1'-0"  
ARCH REF  
DETAIL TAG  
SCALE  
ARCHITECTURAL REFERENCE

DETAIL NUMBER  
ELEVATION BUBBLE  
SIDE NOTES  
PAGE NUMBER

WINDOW TYPE  
WINDOW TAG  
SCALE  
WINDOW QUANTITY

DOOR #

DOOR NUMBER

GLASS TAG  
GLASS TYPE

ABBREVIATIONS

A/C - ACCESS CONTROLLED  
AFF - ABOVE FINISH FLOOR  
BOH - BOTTOM OF HORIZONTAL  
COH - CENTER LINE OF HORIZONTAL  
DIM - DIMENSION  
DLO - DAYLIGHT OPENING  
DO - DOOR OPENING  
ELEV - ELEVATION  
FF - FINISH FLOOR  
GC - GENERAL CONTRACTOR  
MO - MASONRY OPENING  
NFD - NET FRAME DIMENSION  
NTS - NOT TO SCALE  
RO - ROUGH OPENING  
SIM - SIMILAR  
TOH - TOP OF HORIZONTAL  
UNO - UNLESS NOTED OTHERWISE

STORQUEST PORTLAND  
LEASING OFFICE  
4322 BEAVERTON HILLSDALE HWY  
PORTLAND, OR 97221



RENEWS: 6-30-2018

WEST COAST CAD SERVICE

QUALITY SHOP DRAWINGS  
AT AFFORDABLE PRICES  
chad@westcoastcad.com  
503-706-1353

GLAZING CONTRACTOR

ALL STAR GLASS  
3649 KASHMIR WAY SE  
SALEM, OR 97302

HARDWARE SCHEDULE

- HARDWARE GROUP 1
- CASCADE ALUMINUM SURFACE MOUNT CLOSERS
  - CASCADE ALUMINUM TOP AND BOTTOM OFFSET PIVOTS
  - CASCADE ALUMINUM ADA COMPLIANT PUSH/PULLS
  - ADAMS RITE MS1850 THREE POINT LOCK
  - KEYED CYLINDER INTERIOR/EXTERIOR (CONSTRUCTION CYLINDERS)
  - CASCADE ALUMINUM ADA COMPLIANT THRESHOLD
  - CASCADE ALUMINUM STANDARD WEATHER-STRIPPING
  - DOOR TO REMAIN UNLOCKED WHEN BUILDING OCCUPIED STICKER

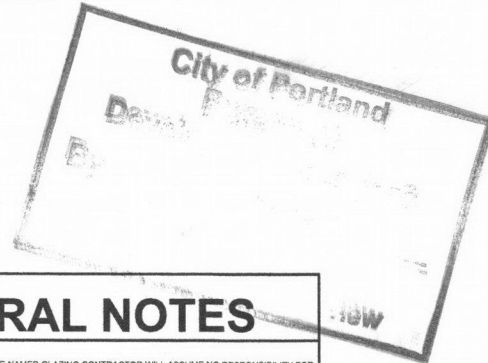
DOOR SCHEDULE

DOOR #	SIZE	STILE	SWING	HDWR GRP	GLASS TYP
106A	6'0" X 7'0"	NARROW	OUT	1	GL2

DRAWING INDEX

PAGE #	TITLE
1	COVER SHEET
2	FLOOR PLAN
3	ELEVATIONS
4	ELEVATIONS
5	ELEVATIONS
6	DETAILS
7	DETAILS
8	DETAILS

City of Portland  
Bureau of  
Development Services  
By A. Gunkig Date 4/30/18  
Approved by  
Planning & Zoning Review



FINISH SCHEDULE

- CLEAR ANODIZED
- BRONZE ANODIZED
- BLACK ANODIZED
- PAINTED/OTHER FINISH

DESCRIPTION:

\_\_\_\_\_  
\_\_\_\_\_  
\_\_\_\_\_  
\_\_\_\_\_  
\_\_\_\_\_

GLASS SCHEDULE

GL1	1/4" SOLARBAN 60, ANNEALED 1/2" AIR 1/4" CLEAR, ANNEALED
GL2	1/4" SOLARBAN 60, TEMPERED 1/2" AIR 1/4" CLEAR, TEMPERED

PRODUCTS USED

- STOREFRONTS:
- CASCADE ALUMINUM
  - 450-TCS CENTER GLAZED
  - THERMALLY BROKEN
- ENTRANCES
- CASCADE ALUMINUM
  - NARROW STILE
  - HARDWARE PER SCHEDULE

GENERAL NOTES

- WEST COAST CAD AND THE NAMED GLAZING CONTRACTOR WILL ASSUME NO RESPONSIBILITY FOR ERRORS RESULTING FROM THE USE OF THESE DRAWINGS BY OTHER TRADES
- FINAL APPROVAL BY THE GENERAL CONTRACTOR CONSTITUTES ACCEPTANCE OF ALL DEVIATIONS TO THE CONTRACT DOCUMENTS MADE IN THESE DRAWINGS, AND WHEN APPROVED THESE DRAWINGS SHALL BE DEEMED ACCURATE AND WILL CONSTITUTE AN AUTHORIZATION TO PROCEED
- THESE DRAWINGS REPRESENT AN INTERPRETATION OF THE APPLICATION OF PRODUCTS TO THIS PROJECT. IT IS IMPORTANT THAT THIS INTERPRETATION BE REVIEWED DIMENSIONALLY AND FUNCTIONALLY WITH RESPECT TO THE ARCHITECTS INTENT
- ALL DIMENSIONS TO BE FIELD VERIFIED
- ROUGH OPENING PROVIDED MUST BE SQUARE, PLUMB, AND LEVEL WITHIN INDUSTRY STANDARDS
- DETAILS SHOWN WITH WORK FROM OTHER TRADES IS FOR REFERENCE ONLY
- ALL FRAME ELEVATIONS ARE TO BE VIEWED FROM THE EXTERIOR UNLESS OTHERWISE NOTED
- PROJECT MATERIALS MUST BE PROTECTED FROM DAMAGE BY OTHER TRADES BY THE GENERAL CONTRACTOR
- ALL FASTENERS SHOWN ARE REFERENCE ONLY. ACTUAL FASTENER TYPES AND SIZES SHOULD BE BASED ON ACTUAL CONDITIONS AND VERIFIED BY A LICENSED STRUCTURAL ENGINEER (IF REQUIRED)
- ALL PART NUMBERS ON THESE DRAWINGS SHOULD BE VERIFIED PRIOR TO ORDERING MATERIALS
- ALL DIMENSIONS ON THESE DRAWINGS SHOULD BE VERIFIED PRIOR TO ORDERING FABRICATION/INSTALLING MATERIALS
- ALL STEEL CLIPS AND INTERNAL STEEL REINFORCING ARE FOR REFERENCE ONLY. ACTUAL STEEL, SIZES AND THICKNESS SHOULD BE DETERMINED BY OTHERS BASED ON THE ARCHITECTS WIND LOAD/ DEAD LOAD REQUIREMENTS OUTLINED IN THE SPECIFICATIONS

APPROVED AS NOTED  
APPROVAL IS ONLY FOR GENERAL CONFORMANCE WITH THE DESIGN CONCEPT OF THE PROJECT AND THE INFORMATION IN THE CONTRACT DOCUMENTS. CONTRACTOR IS RESPONSIBLE FOR DIMENSIONS TO BE CONFIRMED AND CORRELATED AT THE JOB SITE. INFORMATION THAT PERTAINS SOLELY TO THE FABRICATION PROCESS OR TO THE MEANS AND METHODS OF CONSTRUCTION, COORDINATION OF THE WORK OF ALL TRADES, AND REPAIRS, ALL WORK IS A SITE AND SATISFACTORY MAKER. THIS APPROVAL DOES NOT MODIFY THE CONTRACTOR'S DUTY TO COMPLY WITH THE CONTRACT DOCUMENTS.  
BY: D. GROOMS DATE: 03.26.2018  
vga@architecture llc | denver, co

Drawings Received: 3/26/18  
Reviewed for general conformance and compliance with design concept drawings, and specifications. Any action noted does not waive any requirements of contract documents. Verification of details dimensions: coordination of trades; and satisfactory performance of his work are contractors complete responsibility.  
No Exception Taken  
Make Correction Noted  
Revise and Resubmit  
Reviewed By: Edunham  
Date: 03/28/2018  
PEAK ENGINEERING, INC.

RECEIVED  
FOR  
RECORD  
ONLY

DATE:  
FEBRUARY 23, 2018 ENG

1

FIELD VERIFY ALL DIMENSIONS

STORQUEST PORTLAND  
LEASING OFFICE



SYMBOL LEGEND

FINISHED WOOD

SHEETROCK

DIMENSIONAL LUMBER

FACE BRICK

RIGID INSULATION

STEEL

CONCRETE

BATT INSULATION

PLYWOOD

DENOTES BLOCKING OR SHIM. NOT NECESSARILY CONTINUOUS

CAULKING AND BACKER ROD

WINDOW TYPE

A4.01

ELEVATION LOCATION / VIEWPOINT

ELEVATION SHEET NUMBER

DETAIL NUMBER

DETAIL NAME

1

DETAIL NAME

SCALE: 1/4" = 1'-0"

ARCH REF

DETAIL TAG

SCALE

ARCHITECTURAL REFERENCE

DETAIL NUMBER

1

ELEVATION BUBBLE

SIM

SIDE NOTES

PAGE NUMBER

WINDOW TYPE

A

3 EA

1/4" = 1'-0"

WINDOW TAG

SCALE

WINDOW QUANTITY

DOOR #

DOOR TAG

DOOR NUMBER

1

GLASS TAG

GLASS TYPE

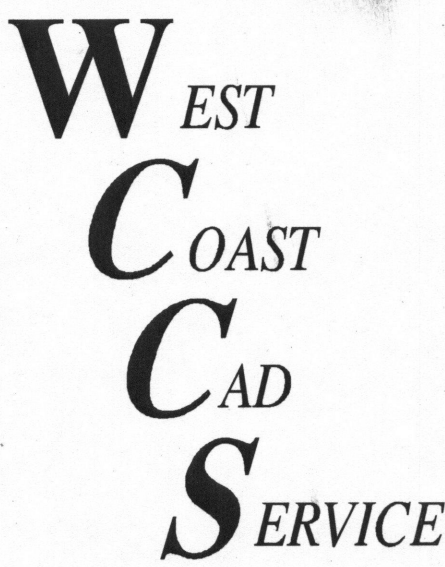
ABBREVIATIONS

- A/C - ACCESS CONTROLLED
- AFF - ABOVE FINISH FLOOR
- BOH - BOTTOM OF HORIZONTAL
- COH - CENTER LINE OF HORIZONTAL
- DIM - DIMENSION
- DLO - DAYLIGHT OPENING
- DO - DOOR OPENING
- ELEV - ELEVATION
- FF - FINISH FLOOR
- GC - GENERAL CONTRACTOR
- MO - MASONRY OPENING
- NFD - NET FRAME DIMENSION
- NTS - NOT TO SCALE
- RO - ROUGH OPENING
- SIM - SIMILAR
- TOH - TOP OF HORIZONTAL
- UNO - UNLESS NOTED OTHERWISE

STORQUEST PORTLAND  
LEASING OFFICE  
4322 BEAVERTON HILLSDALE HWY  
PORTLAND, OR 97221



RENEWS: 6-30-2018



QUALITY SHOP DRAWINGS  
AT AFFORDABLE PRICES  
chad@westcoastcad.com  
503-706-1353

GLAZING CONTRACTOR

ALL STAR GLASS  
3649 KASHMIR WAY SE  
SALEM, OR 97302

HARDWARE SCHEDULE

- HARDWARE GROUP 1
- CASCADE ALUMINUM SURFACE MOUNT CLOSERS

CASCADE ALUMINUM TOP AND BOTTOM OFFSET PIVOTS

CASCADE ALUMINUM ADA COMPLIANT PUSH/PULLS

ADAMS RITE MS1850 THREE POINT LOCK

KEYED CYLINDER INTERIOR/EXTERIOR (CONSTRUCTION CYLINDERS)

CASCADE ALUMINUM ADA COMPLIANT THRESHOLD

CASCADE ALUMINUM STANDARD WEATHER-STRIPPING

DOOR TO REMAIN UNLOCKED WHEN BUILDING OCCUPIED STICKER

DOOR SCHEDULE

DOOR #	SIZE	STILE	SWING	HDWR GRP	GLASS TYP
106A	6'0" X 7'0"	NARROW	OUT	1	GL2

DRAWING INDEX

PAGE #	TITLE
1	COVER SHEET
2	FLOOR PLAN
3	ELEVATIONS
4	ELEVATIONS
5	ELEVATIONS
6	DETAILS
7	DETAILS
8	DETAILS

FINISH SCHEDULE

- CLEAR ANODIZED
- BRONZE ANODIZED
- BLACK ANODIZED
- PAINTED/OTHER FINISH

DESCRIPTION:

GLASS SCHEDULE

GL1	1/4" SOLARBAN 60, ANNEALED 1/2" AIR 1/4" CLEAR, ANNEALED
GL2	1/4" SOLARBAN 60, TEMPERED 1/2" AIR 1/4" CLEAR, TEMPERED

PRODUCTS USED

- STOREFRONTS:
- CASCADE ALUMINUM

450-TCS CENTER GLAZED

THERMALLY BROKEN
- ENTRANCES
- CASCADE ALUMINUM

NARROW STILE

HARDWARE PER SCHEDULE

GENERAL NOTES

1. WEST COAST CAD AND THE NAMED GLAZING CONTRACTOR WILL ASSUME NO RESPONSIBILITY FOR ERRORS RESULTING FROM THE USE OF THESE DRAWINGS BY OTHER TRADES
2. FINAL APPROVAL BY THE GENERAL CONTRACTOR CONSTITUTES ACCEPTANCE OF ALL DEVIATIONS TO THE CONTRACT DOCUMENTS MADE IN THESE DRAWINGS, AND WHEN APPROVED THESE DRAWINGS SHALL BE DEEMED ACCURATE AND WILL CONSTITUTE AN AUTHORIZATION TO PROCEED
3. THESE DRAWINGS REPRESENT AN INTERPRETATION OF THE APPLICATION OF PRODUCTS TO THIS PROJECT. IT IS IMPORTANT THAT THIS INTERPRETATION BE REVIEWED DIMENSIONALLY AND FUNCTIONALLY WITH RESPECT TO THE ARCHITECTS INTENT
4. ALL DIMENSIONS TO BE FIELD VERIFIED
5. ROUGH OPENING PROVIDED MUST BE SQUARE, PLUM, AND LEVEL WITHIN INDUSTRY STANDARDS
6. DETAILS SHOWN WITH WORK FROM OTHER TRADES IS FOR REFERENCE ONLY
7. ALL FRAME ELEVATIONS ARE TO BE VIEWED FROM THE EXTERIOR UNLESS OTHERWISE NOTED
8. PROJECT MATERIALS MUST BE PROTECTED FROM DAMAGE BY OTHER TRADES BY THE GENERAL CONTRACTOR
9. ALL FASTENERS SHOWN ARE REFERENCE ONLY. ACTUAL FASTENER TYPES AND SIZES SHOULD BE BASED ON ACTUAL CONDITIONS AND VERIFIED BY A LICENSED STRUCTURAL ENGINEER (IF REQUIRED)
10. ALL PART NUMBERS ON THESE DRAWINGS SHOULD BE VERIFIED PRIOR TO ORDERING MATERIALS
11. ALL DIMENSIONS ON THESE DRAWINGS SHOULD BE VERIFIED PRIOR TO ORDERING/FABRICATING/INSTALLING MATERIALS
12. ALL STEEL CLIPS AND INTERNAL STEEL REINFORCING ARE FOR REFERENCE ONLY. ACTUAL STEEL SIZES AND THICKNESS SHOULD BE DETERMINED BY OTHERS BASED ON THE ARCHITECTS WIND LOAD/ DEAD LOAD REQUIREMENTS OUTLINED IN THE SPECIFICATIONS

FIELD VERIFY ALL DIMENSIONS

DATE:  
FEBRUARY 23, 2018 ENG

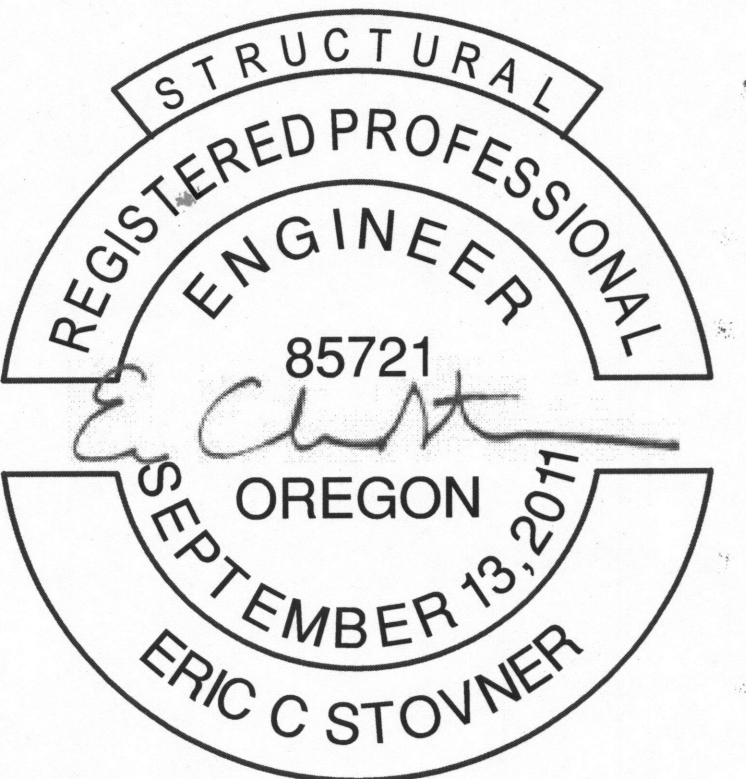
1

STORQUEST PORTLAND  
LEASING OFFICE

15-189900-001-CO  
15-189900-001-CO



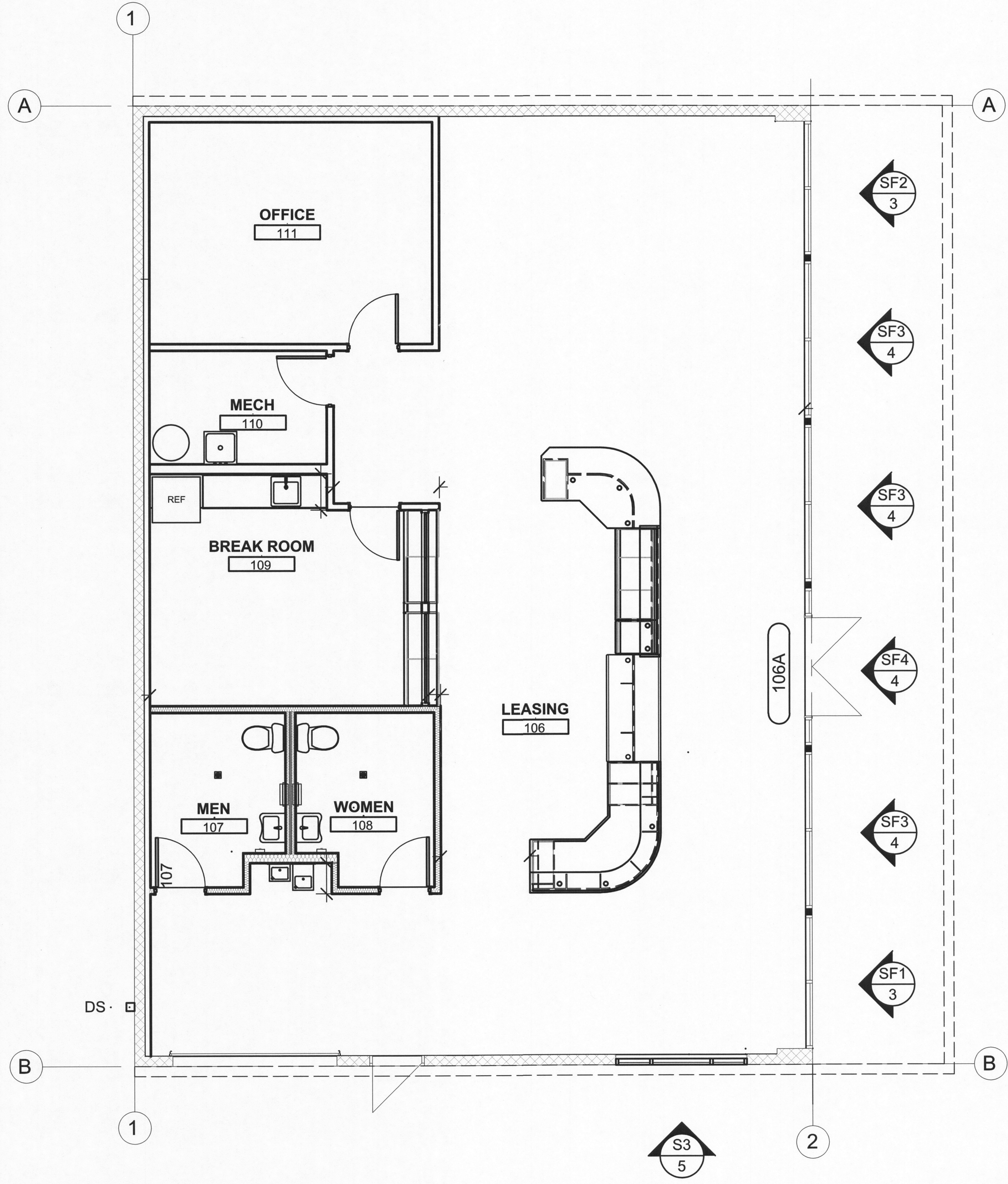
STORQUEST PORTLAND  
LEASING OFFICE



RENEWS: 6-30-2018

DATE:  
FEBRUARY 23, 2018 ENG

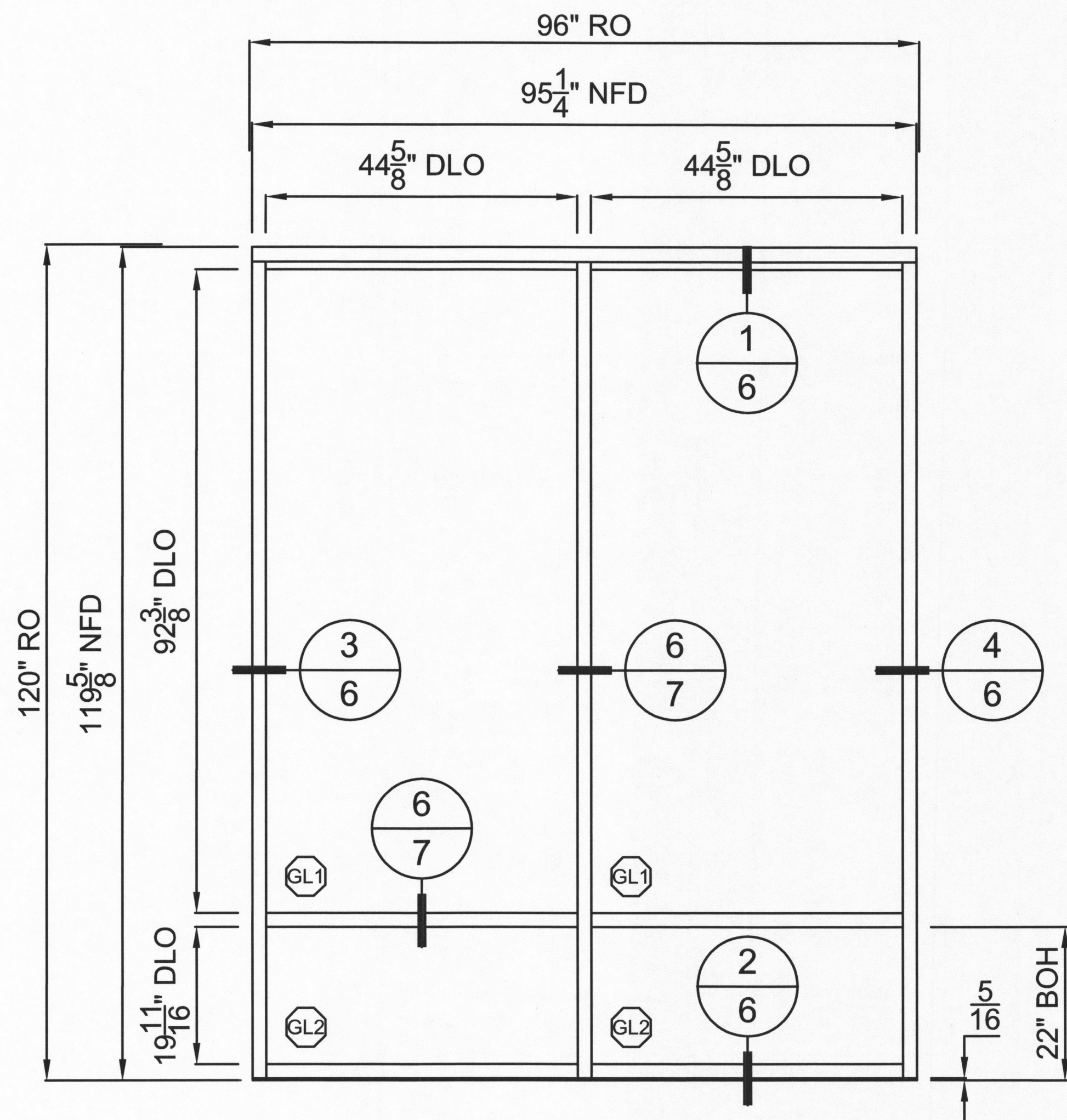
2



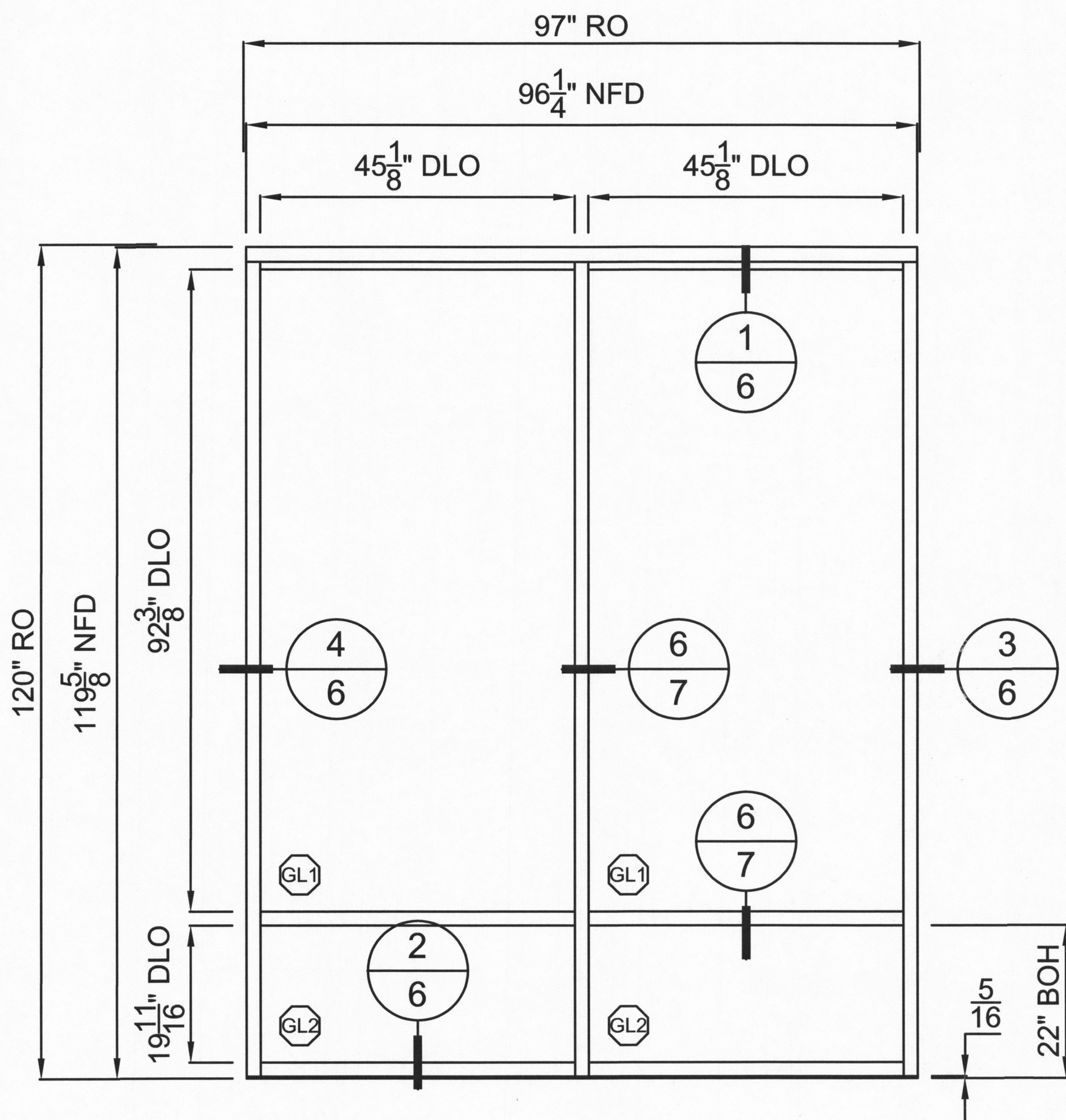
1 FLOOR PLAN  
SCALE: NOT TO SCALE



STORQUEST PORTLAND  
LEASING OFFICE



WINDOW TYPE	
SF1	
QUANTITY	SCALE
1	3/8" = 1'0"



WINDOW TYPE	
SF2	
QUANTITY	SCALE
1	3/8" = 1'0"



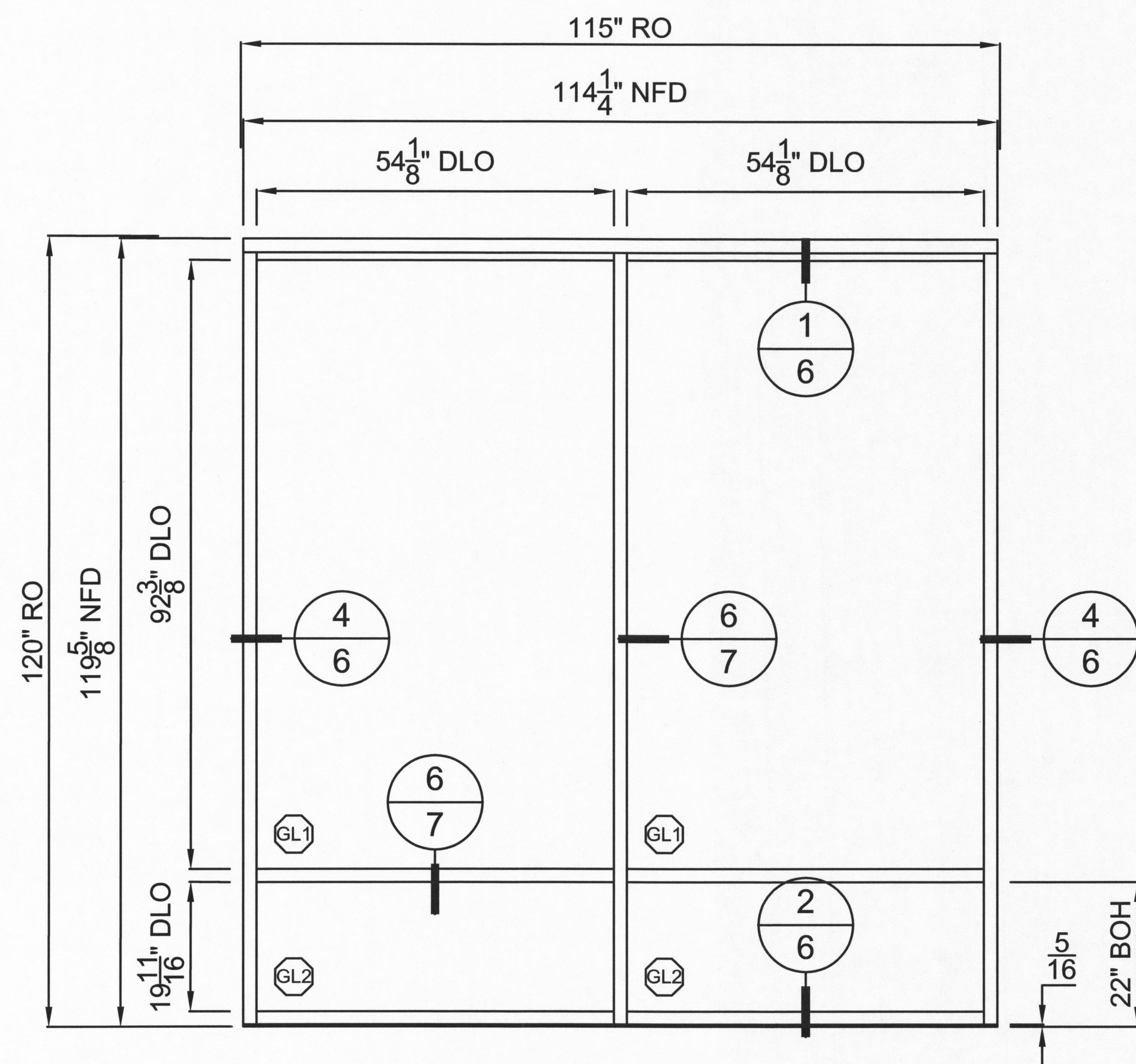
RENEWS: 6-30-2018

City of Portland  
Bureau of  
Development Services  
By *K Moore* Date *3/27/18*  
Approved by  
Planning and Zoning Review

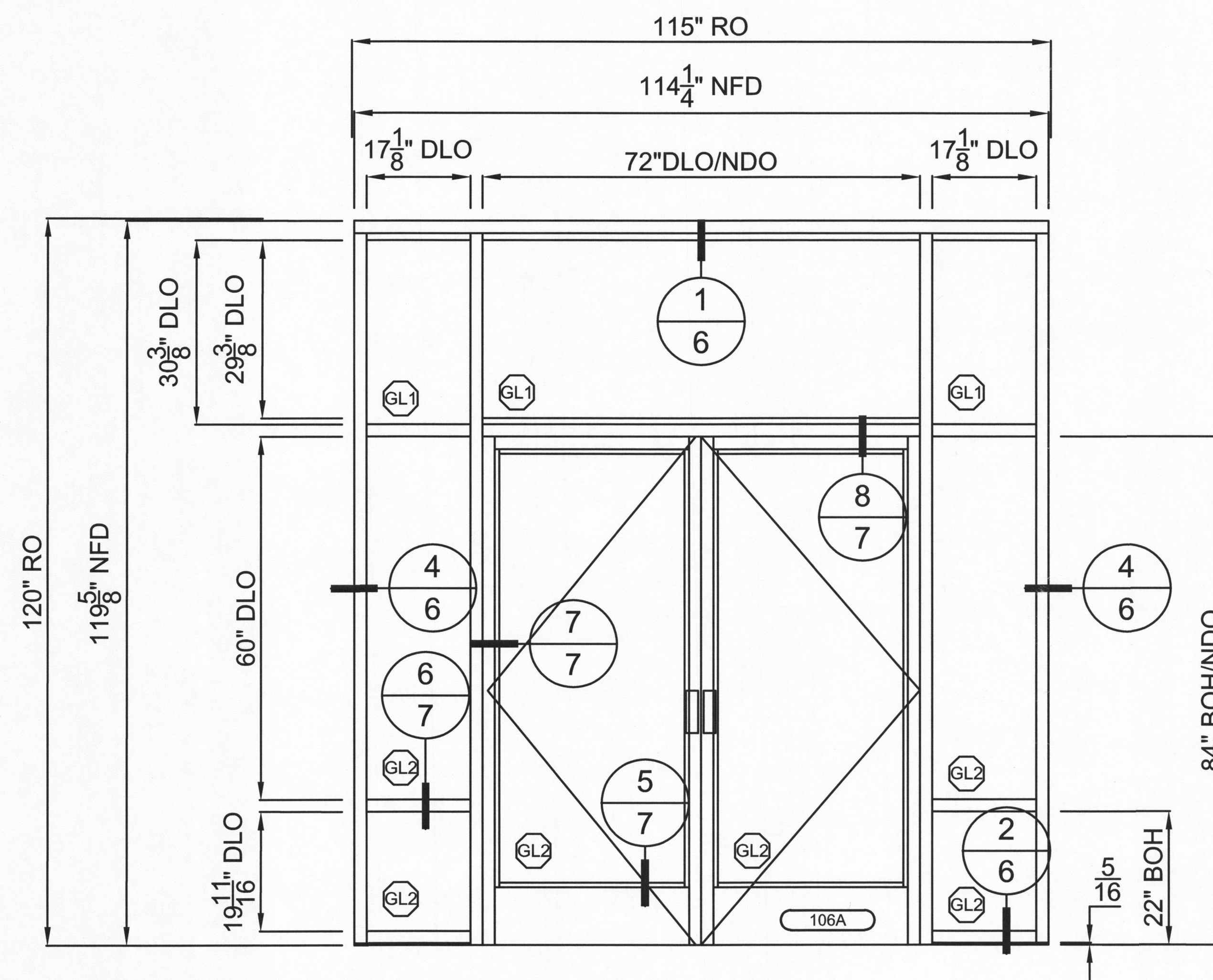
DATE:  
FEBRUARY 23, 2018 ENG



**STORQUEST PORTLAND  
LEASING OFFICE**



WINDOW TYPE	
SF3	
QUANTITY	SCALE
3	3/8" = 1'0"



WINDOW TYPE	
SF4	
QUANTITY	SCALE
1	3/8" = 1'0"

City of Portland  
Bureau of  
Development Services  
By *[Signature]* Date 3/27/18  
Approved by  
Planning and Zoning Review



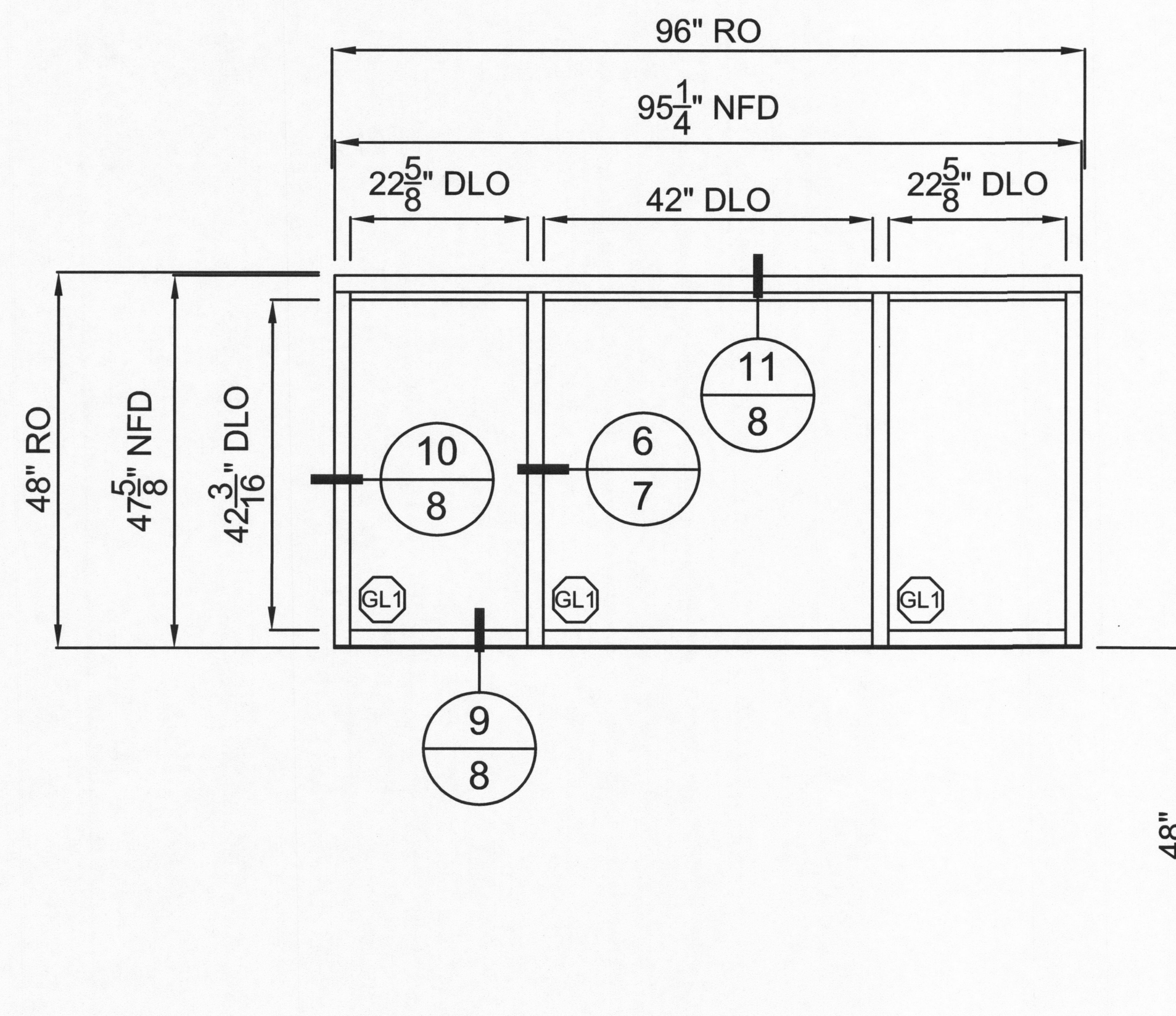
RENEWS: 6-30-2018

DATE:  
FEBRUARY 23, 2018 ENG

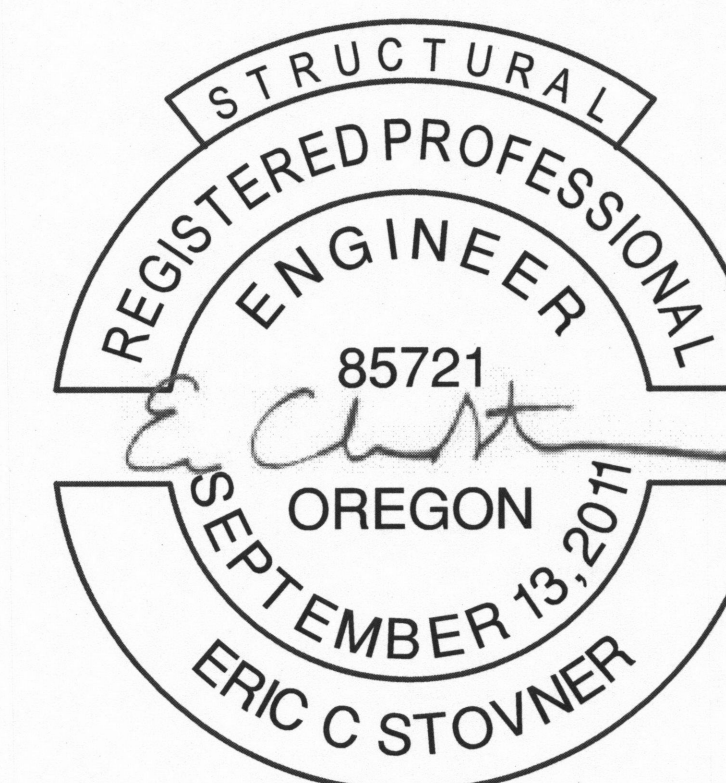
**4**



STORQUEST PORTLAND  
LEASING OFFICE



WINDOW TYPE	
S3	
QUANTITY	SCALE
1	3/8" = 1'0"



RENEWS: 6-30-2018

City of Portland  
Bureau of  
Development Services  
By *Moore* Date *3/27/18*  
Approved by  
Planning and Zoning Review

DATE:  
FEBRUARY 23, 2018 ENG

5



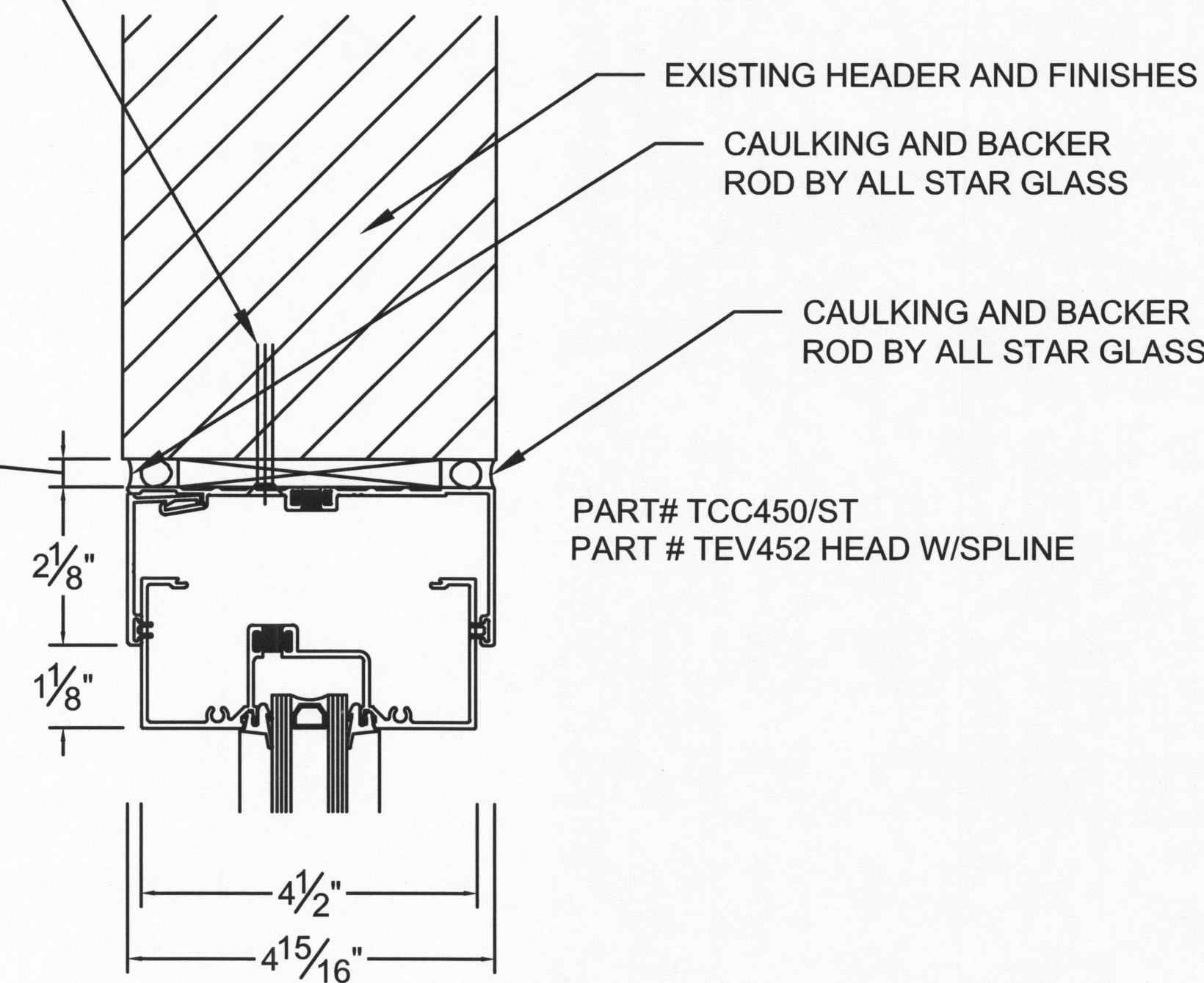
(1) 1/4" DIA. SIMPSON TITEN HD SCREW ANCHOR W/ 1-5/8" EMBEDMENT, 1-3/4" MIN. EDGE DISTANCE, 6" MIN. SPACING INTO 4" MIN. THICK CONCRETE EACH SIDE OF VERTICAL MULLION (ICC-ES ESR-2713)

(1) ITW BUILDEX 12-24 TEKS/5 SCREW W/ 1/2" MIN. EDGE DISTANCE AND 6" MIN. SPACING INTO 3/8" MAX THICK STRUCTURAL STEEL EACH SIDE OF VERTICAL MULLION (ICC-ES ESR-1976)

(1) ITW BUILDEX 12-14 TEKS/3 SCREW W/ 1" MIN. EDGE DISTANCE AND 6" MIN. SPACING INTO 20GA. MIN. THICK COLD-FORMED STEEL EACH SIDE OF VERTICAL MULLION (ICC-ES ESR-1976)

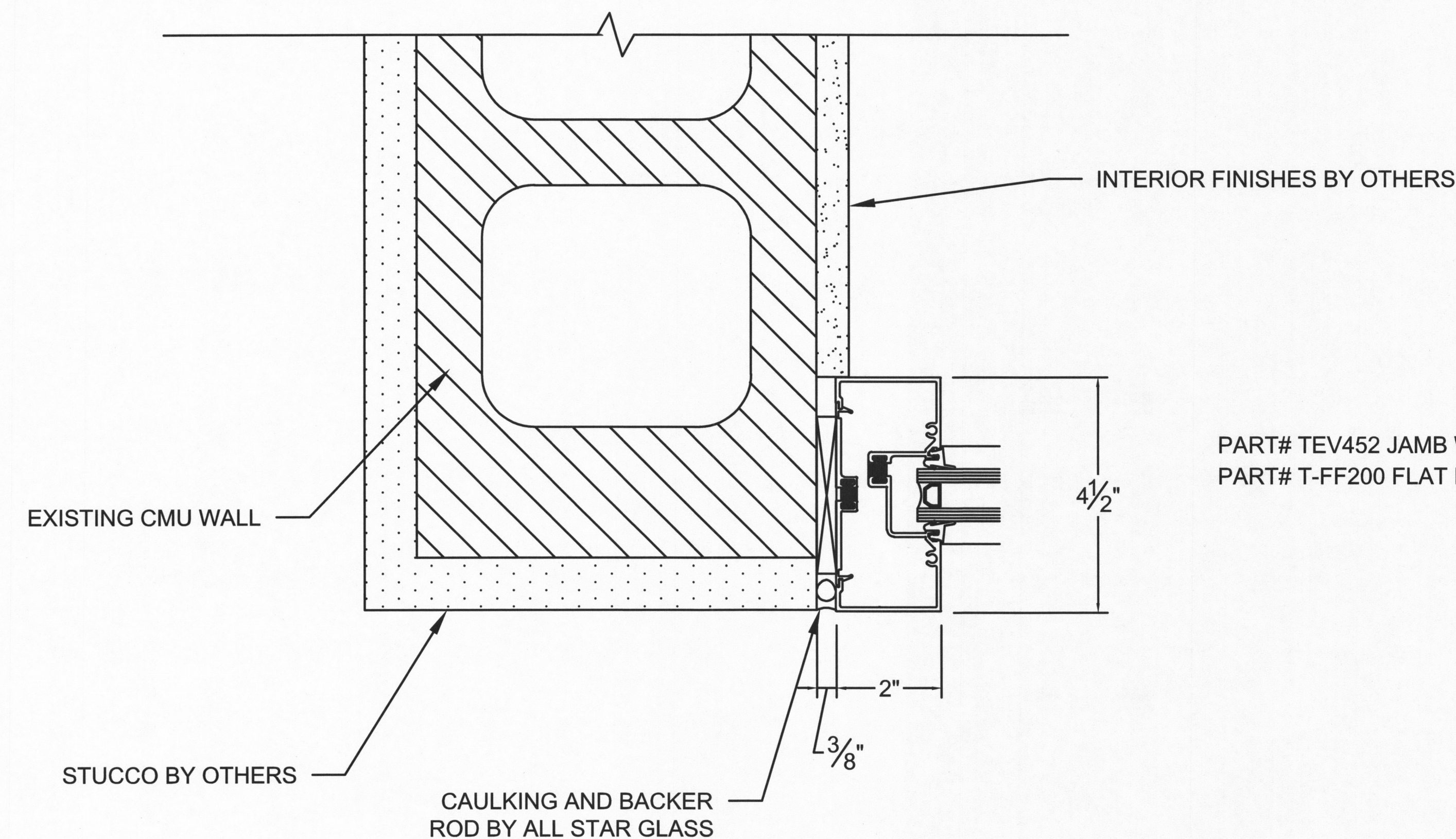
(2) 1/4" DIA. SIMPSON SDS SCREWS W/ 1-1/2" MIN. EDGE DISTANCE AND 3" MIN. SPACING INTO WOOD EACH SIDE OF VERTICAL MULLION (ICC-ES ESR-2236)

(1) 1/2" SIMPSON STRONG BOLT 2 ANCHOR W/ 3-1/2" EMBEDMENT, 4" MIN. SPACING, 1-3/4" MIN. EDGE DISTANCE AND 12" MIN. END DISTANCE INTO FULLY GROUTED CMU EACH SIDE OF VERTICAL MULLION (IAPMO ER-240)



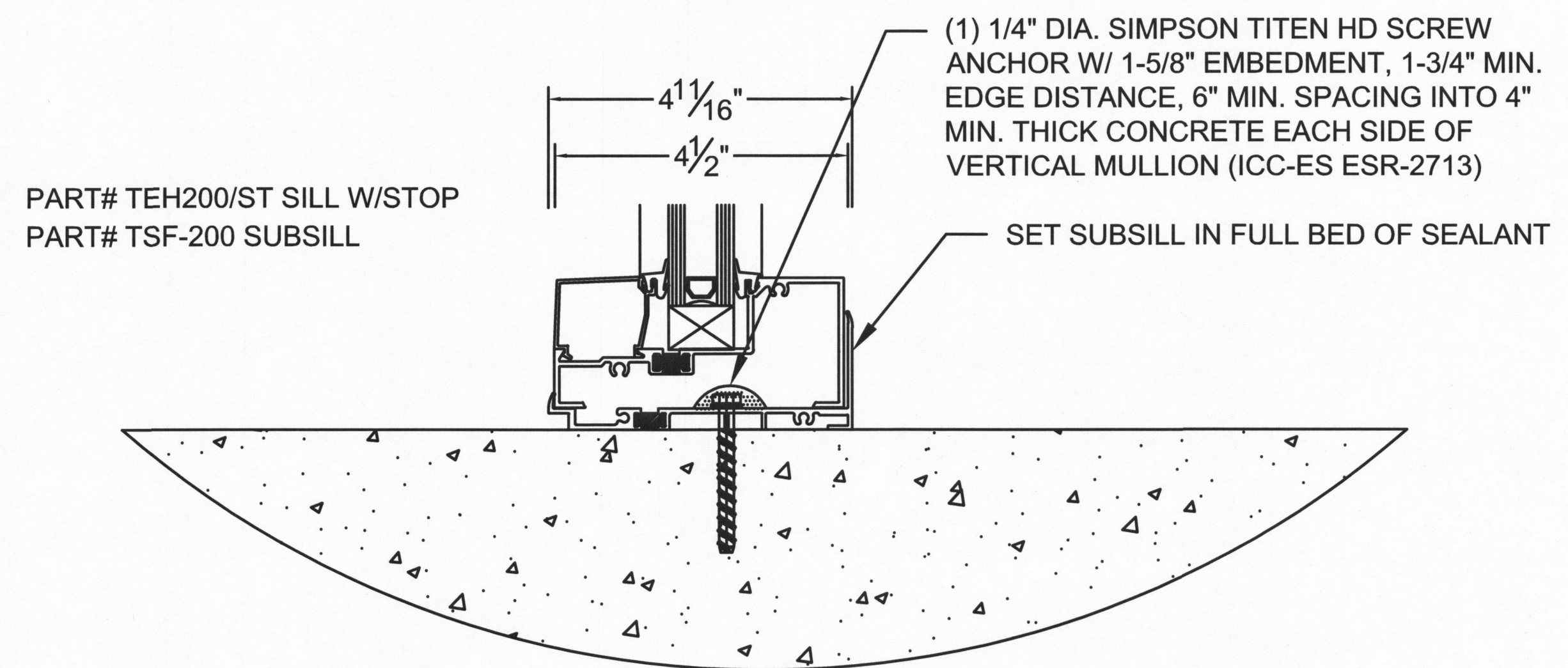
### 1 STOREFRONT HEAD

SCALE: 3" = 1'-0"



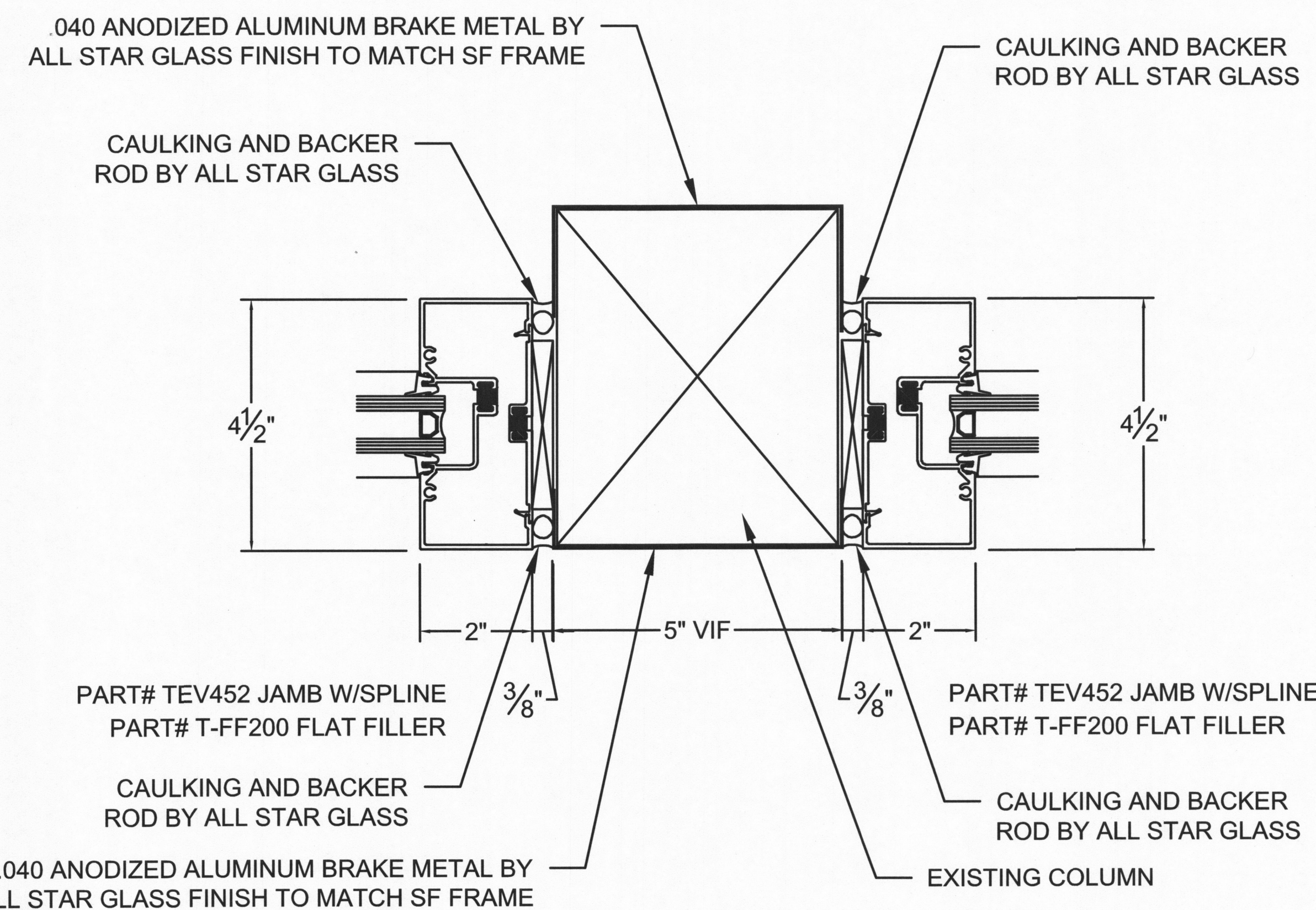
### 3 STOREFRONT JAMB @ CMU WALL

SCALE: 3" = 1'-0"



### 2 STOREFRONT SILL @ CONCRETE

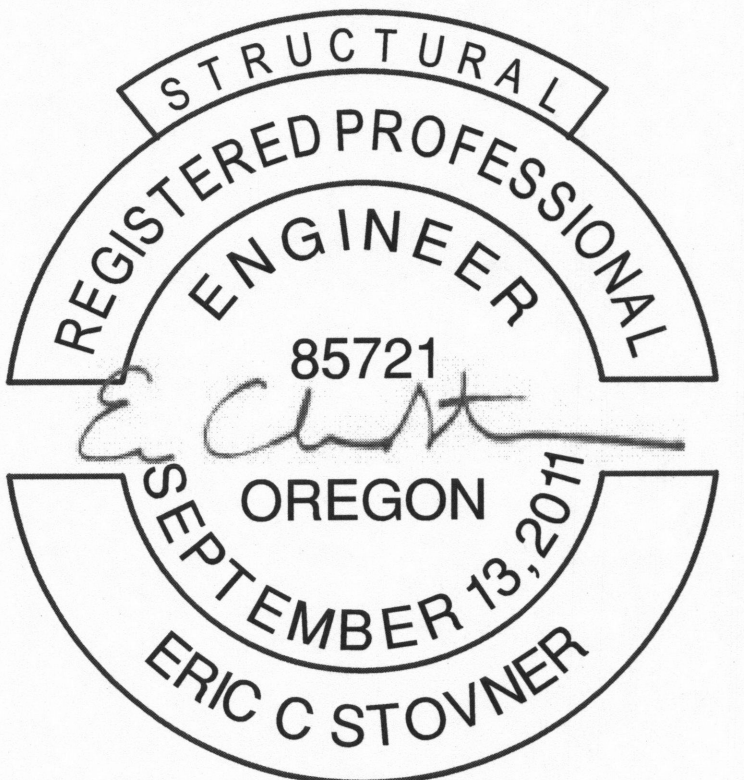
SCALE: 3" = 1'-0"



### 4 STOREFRONT JAMB @ EXISTING COLUMN

SCALE: 3" = 1'-0"

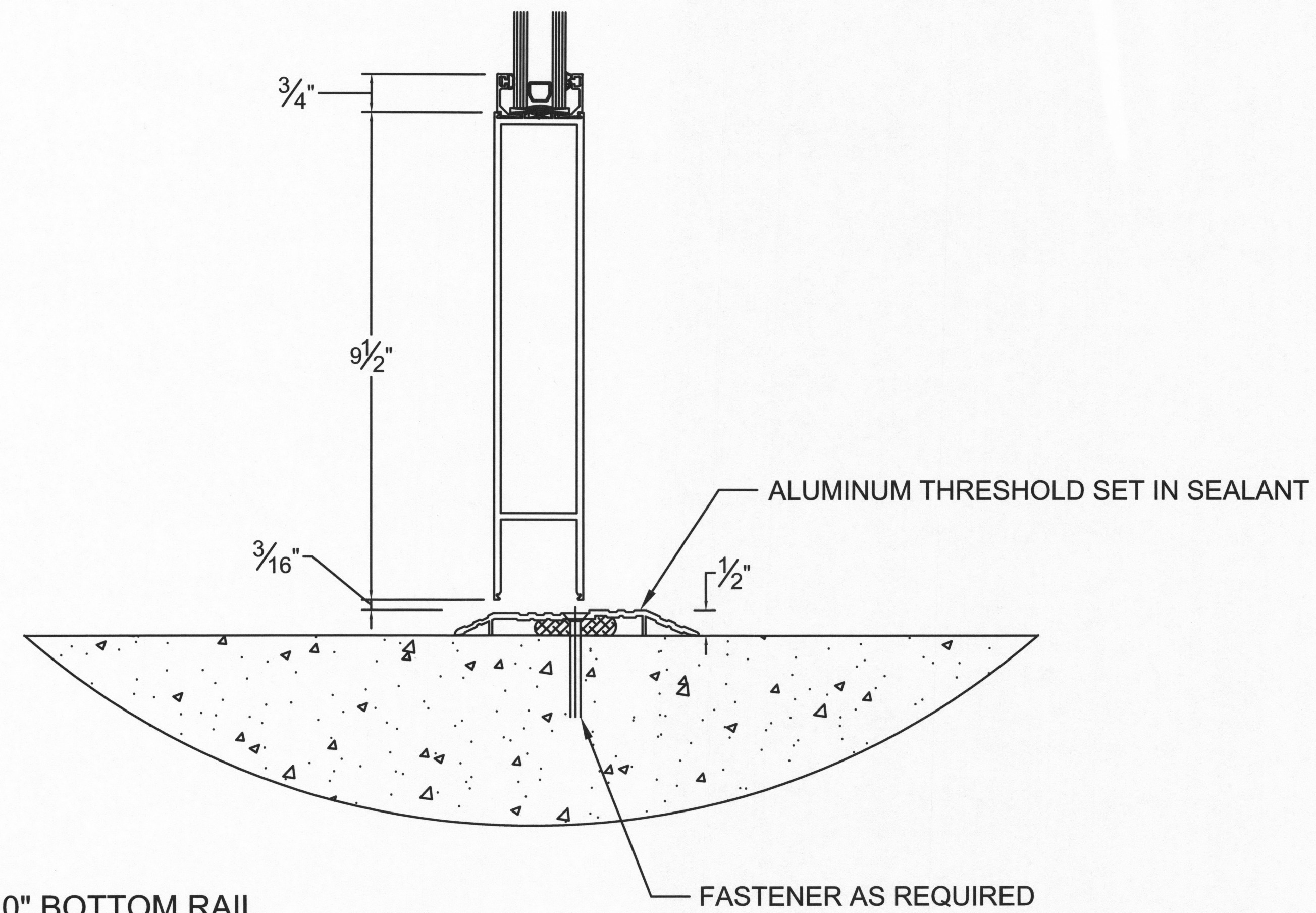




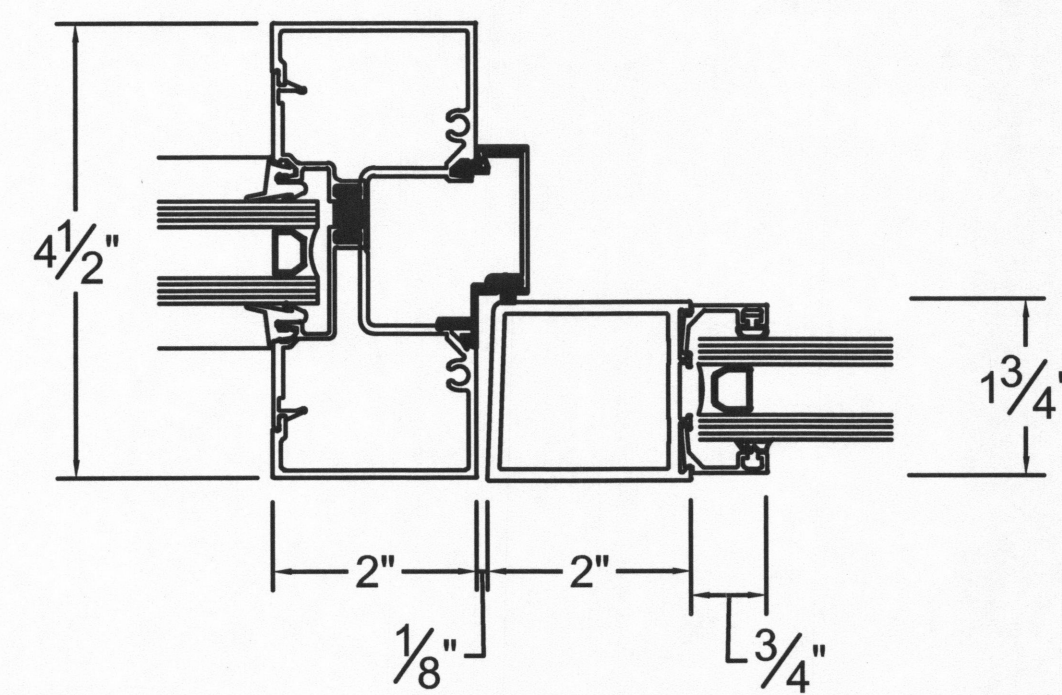
RENEWS: 6-30-2018

DATE:  
FEBRUARY 23, 2018 ENG

**7**

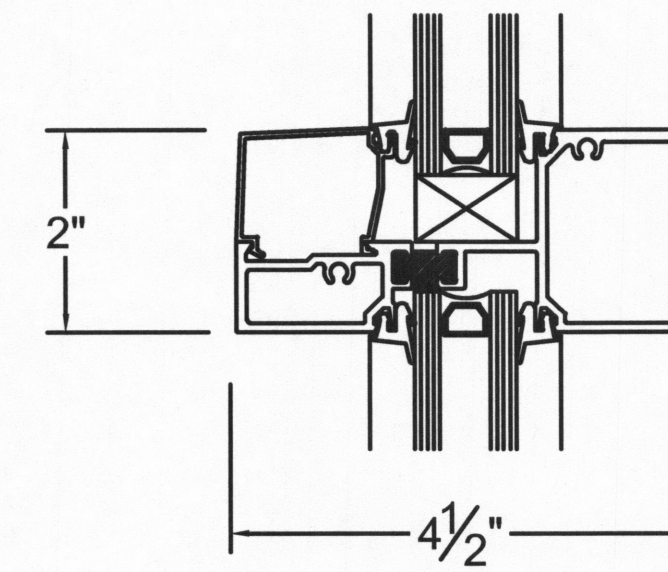


**5 10" BOTTOM RAIL**  
SCALE: 3" = 1'-0"



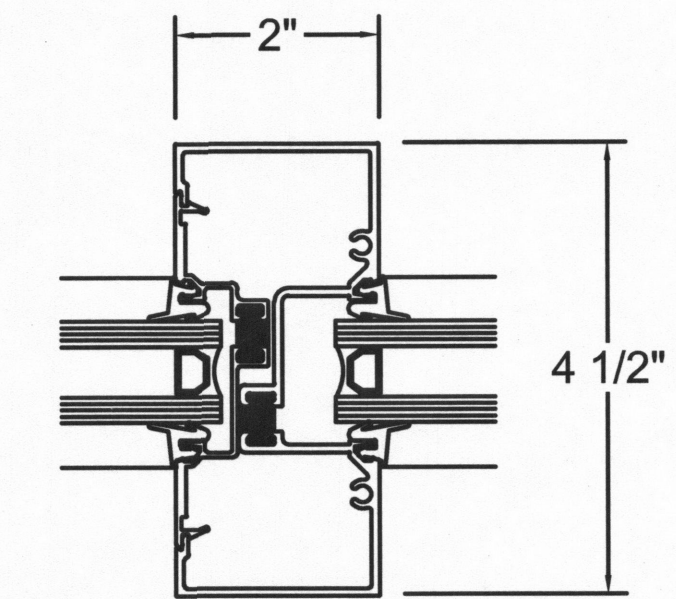
**7 DOOR JAMB @ SIDELITE**  
SCALE: 3" = 1'-0"

PART# TEH450/ST TUBULAR HORIZONTAL



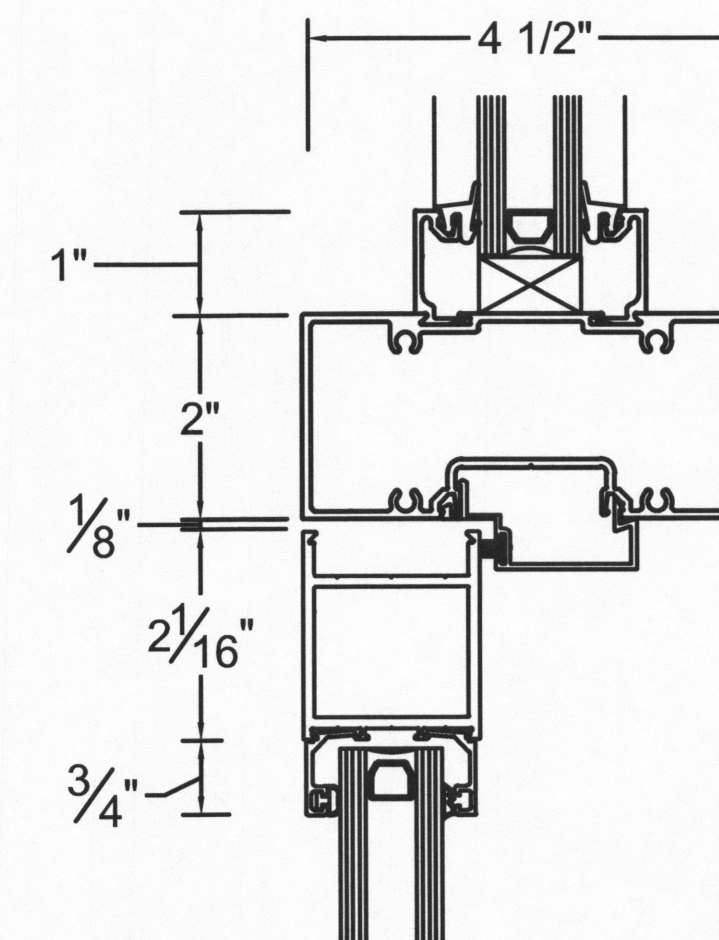
HORIZONTAL

PART# TEV452 VERT W/SPLINE  
PART# TEIF200 POCKET FILLER



VERTICAL

**6 INTERMEDIATE MULLIONS**  
SCALE: 3" = 1'-0"



**8 DOOR HEAD @ TRANSOM**  
SCALE: 3" = 1'-0"



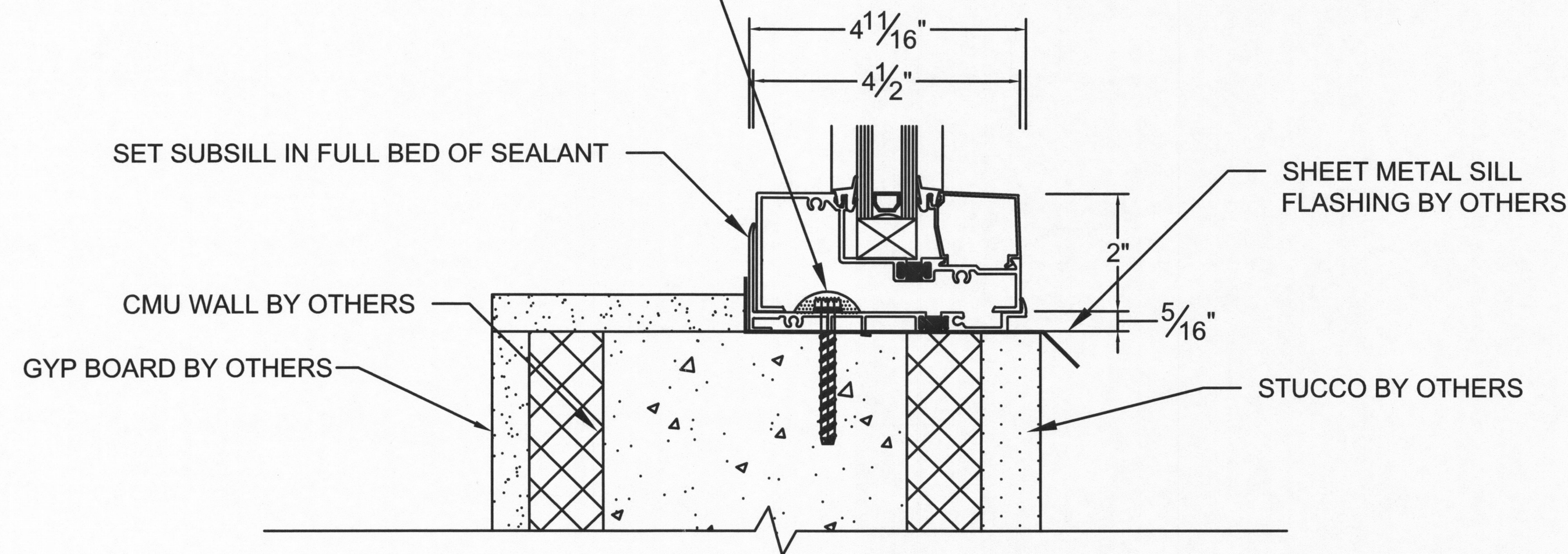


RENEWS: 6-30-2018

DATE:  
FEBRUARY 23, 2018 ENG

(1) 1/2" SIMPSON STRONG BOLT 2 ANCHOR W/  
3-1/2" EMBEDMENT, 4" MIN. SPACING, 1-3/4"  
MIN. EDGE DISTANCE AND 12" MIN. END  
DISTANCE INTO FULLY GROUTED CMU EACH  
SIDE OF VERTICAL MULLION (IAPMO ER-240)

PART# TEH200/ST SILL W/STOP  
PART# TSF-200 SUBSILL



**9 STOREFRONT SILL @ CMU**

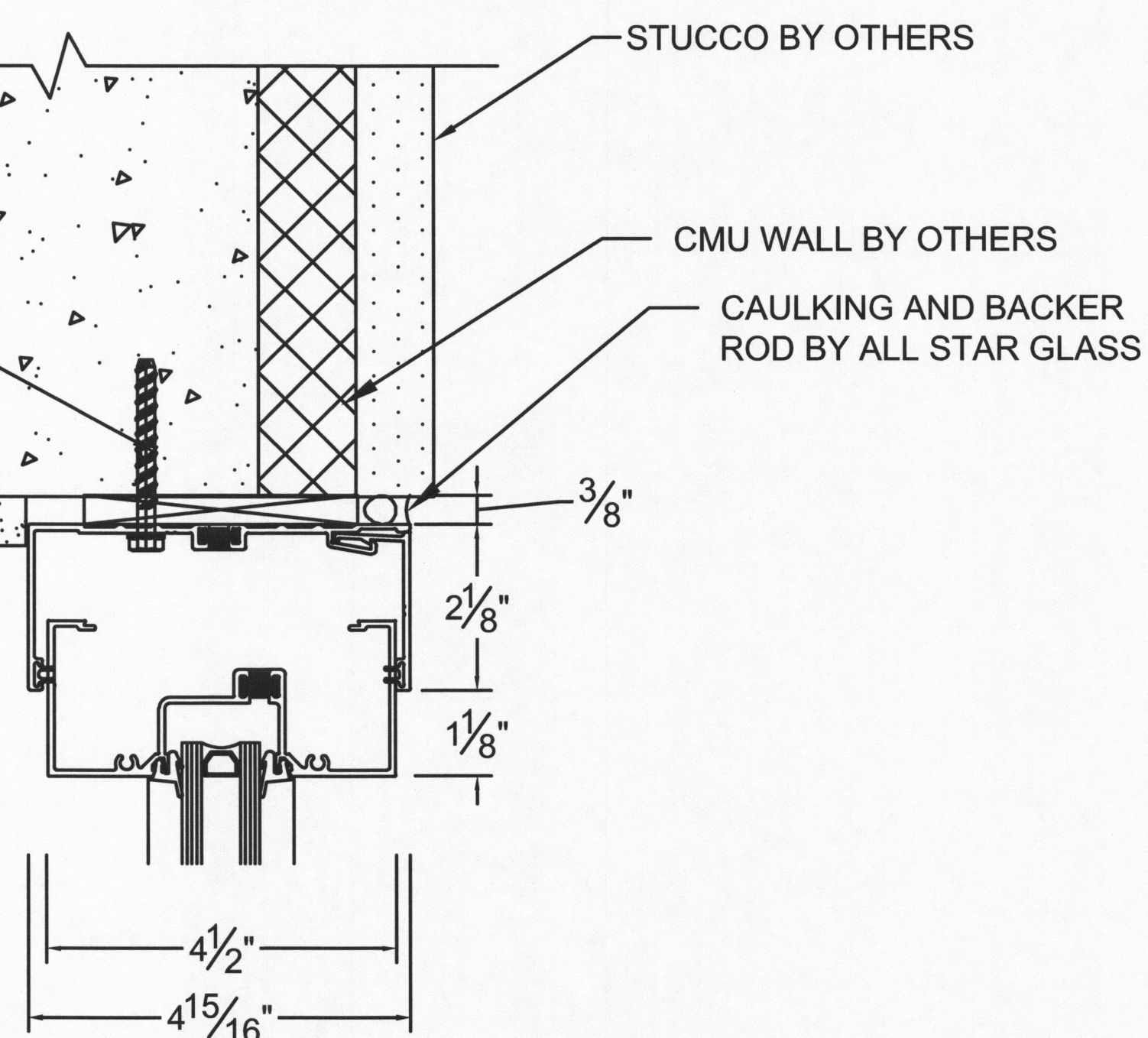
SCALE: 3" = 1'-0"

19/A7.2

GYP BOARD BY OTHERS

(1) 1/2" SIMPSON STRONG BOLT 2  
ANCHOR W/ 3-1/2" EMBEDMENT, 4" MIN.  
SPACING, 1-3/4" MIN. EDGE DISTANCE  
AND 12" MIN. END DISTANCE INTO  
FULLY GROUTED CMU EACH SIDE OF  
VERTICAL MULLION (IAPMO ER-240)

PART# TCC450/ST  
PART # TEV452 HEAD W/SPLINE

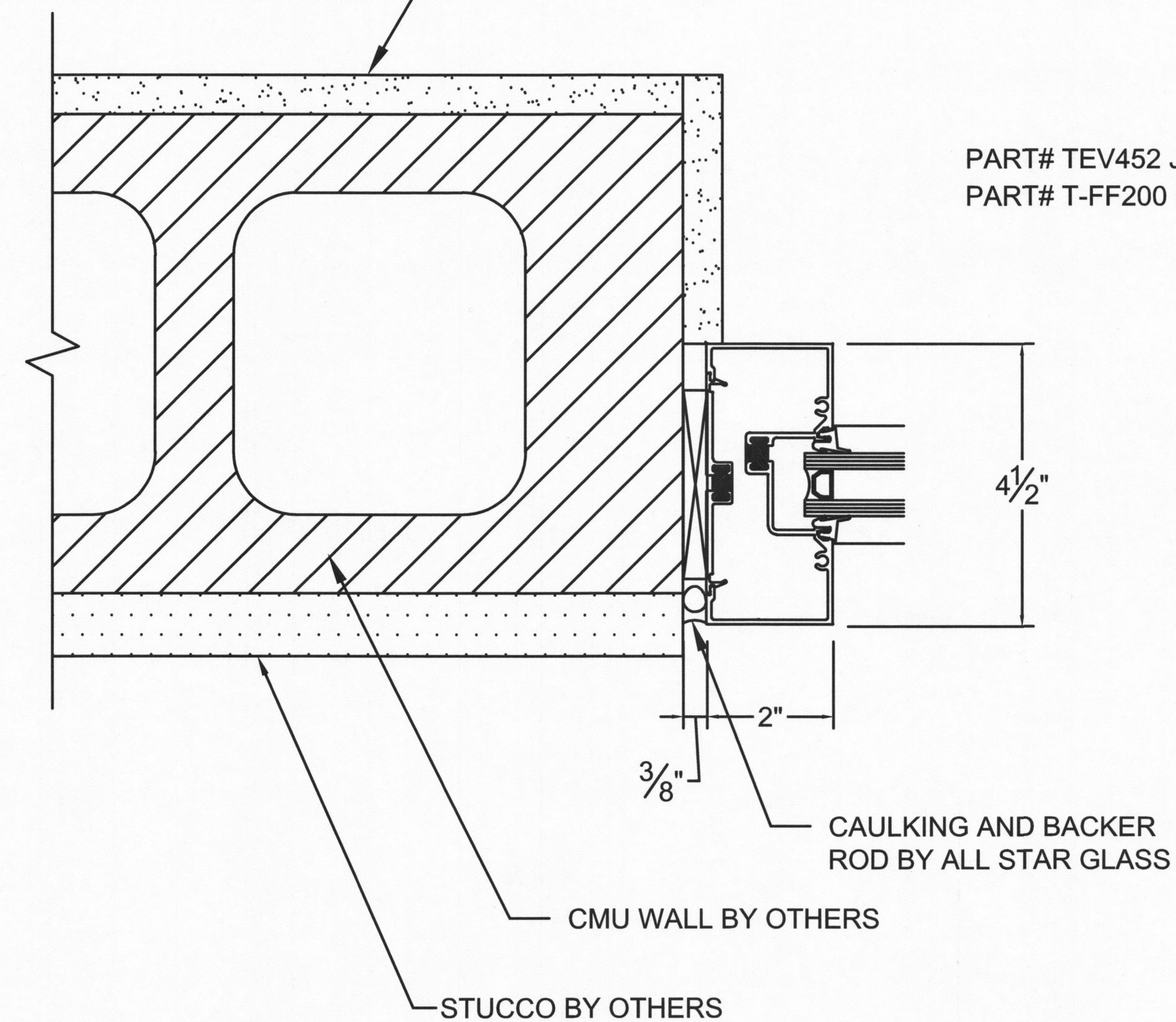


**11 STOREFRONT HEAD @ CMU**

SCALE: 3" = 1'-0"

GYP BOARD BY OTHERS

PART# TEV452 JAMB W/SPLINE  
PART# T-FF200 FLAT FILLER



**10 STOREFRONT JAMB @ CMU**

SCALE: 3" = 1'-0"

20/A7.4