

working for clean rivers



Portland Harbor Fish Advisory Program

Annie Von Burg | Senior Program Manager | Bureau of Environmental Services

December 20, 2017

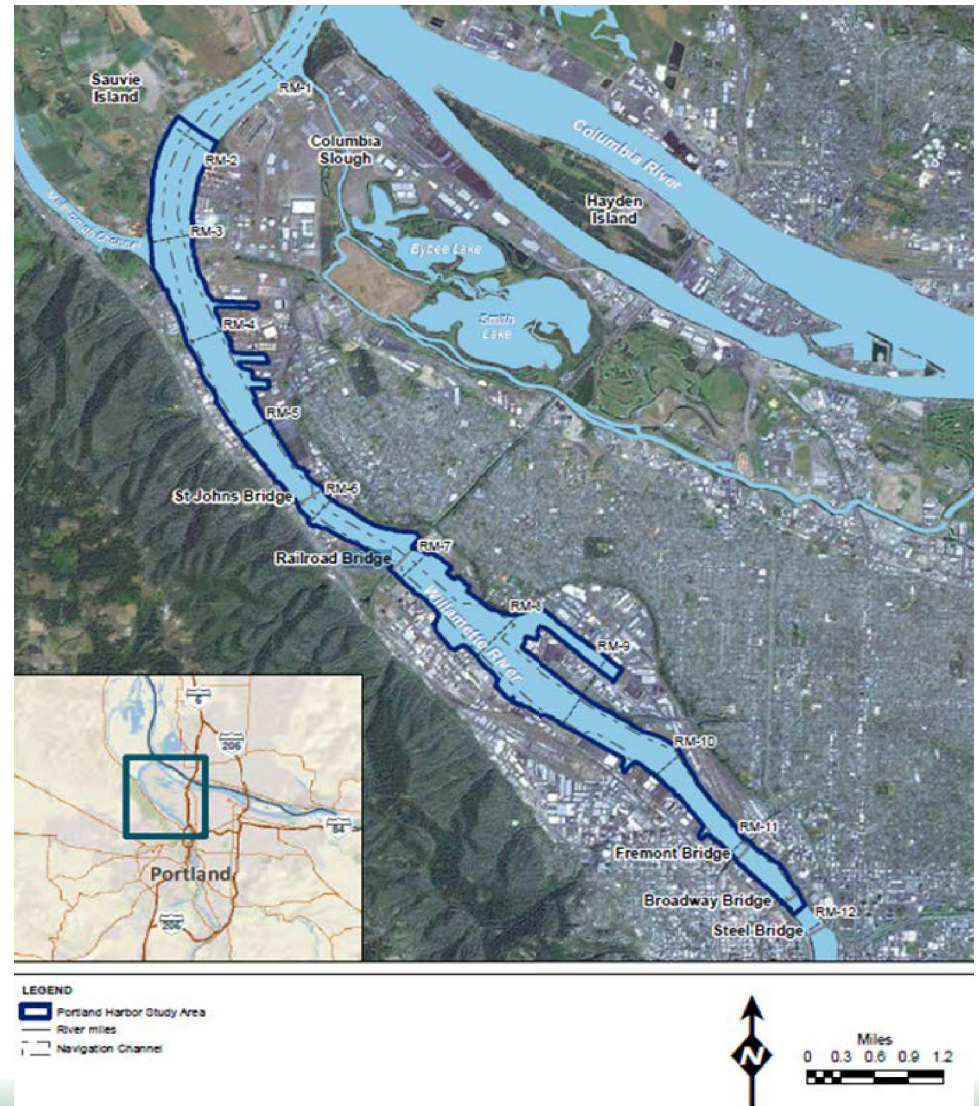


ENVIRONMENTAL SERVICES
CITY OF PORTLAND

NICK FISH, COMMISSIONER
MICHAEL JORDAN, DIRECTOR

Portland Harbor Superfund

- 10 mile stretch of the lower Willamette River from Sauvie Island to the Broadway bridge.
- Final Cleanup Plan released in Jan of 2017.
- EPA estimates that the cleanup will take 13 years of active construction and 17 years of active monitoring.



Contamination and risk to people

- Contamination at the site is primarily in the sediment at the bottom of the river as a result of decades of industrial use.
- EPA evaluated the risks to people and wildlife from the contaminants and determined the greatest health risk to people is from eating resident fish like carp, bass and catfish.
- Communities most impacted by health risks are largely vulnerable populations, subsistence fishers including Native Americans, minority communities, immigrant and refugees, and, low-and no-income residents.

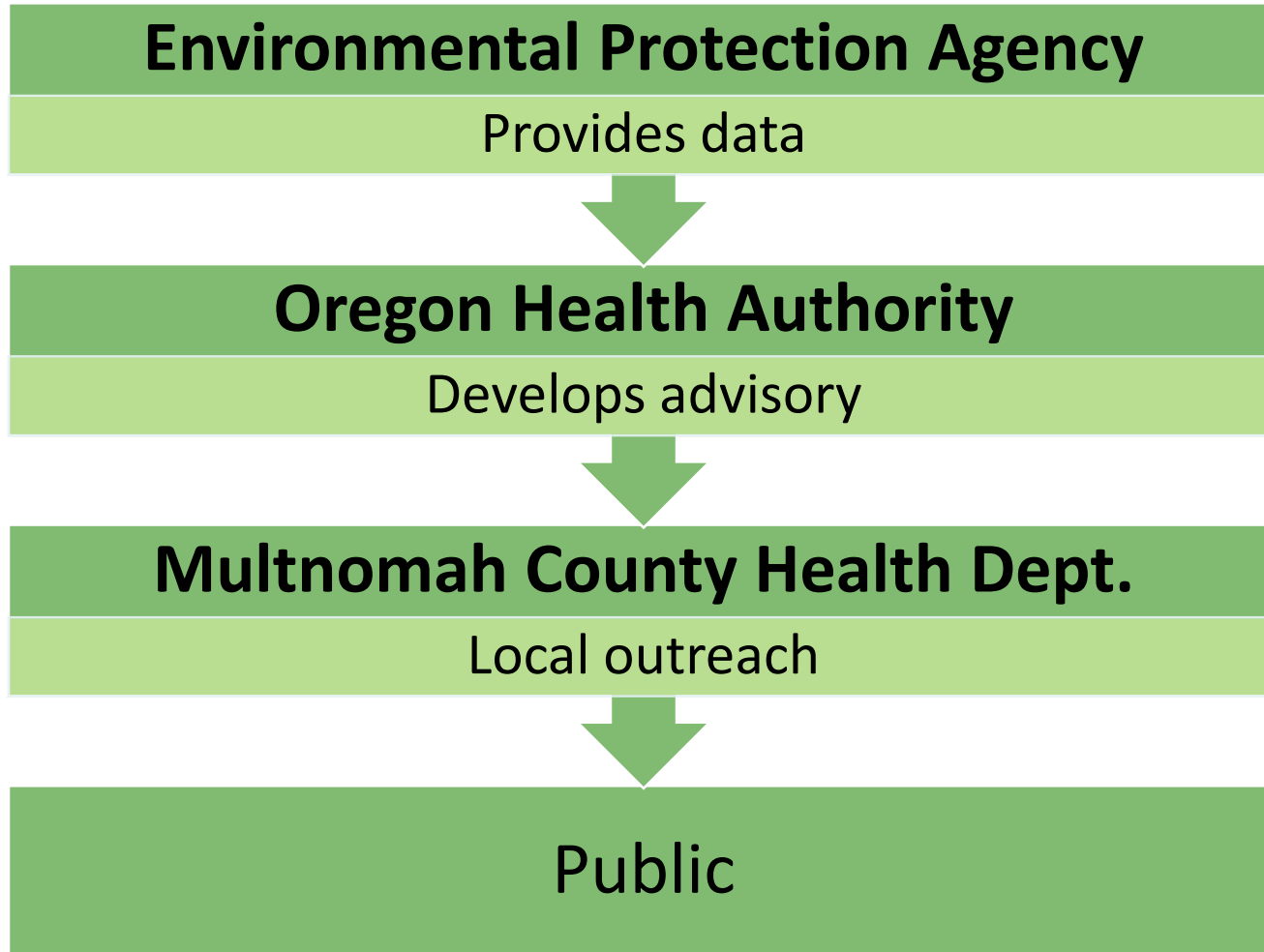


Community Feedback

- Current fish advisories are inadequate and hard to understand.
- More community involvement and outreach is necessary.
- Better coordination among government agencies when informing the public of risk.



Fish Advisories for a superfund site



Partnership to support local outreach

Performing partner

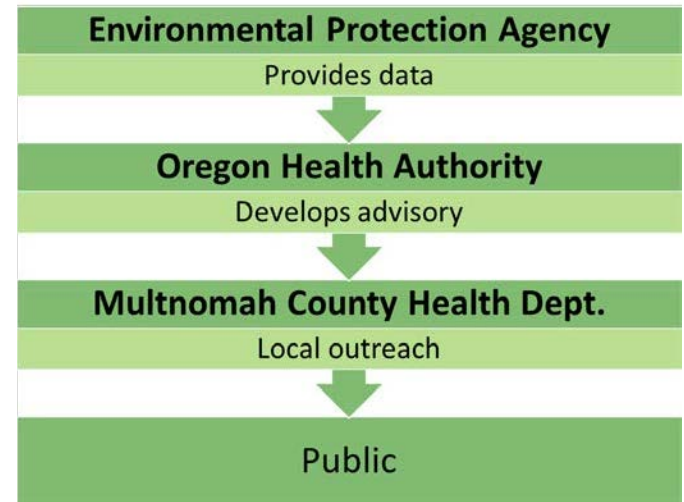
- Multnomah County Health Department

Funding partners

- State of Oregon
- Port of Portland
- City of Portland

Coordinating partners

- Environmental Protection Agency
- Oregon Health Authority



Main components of this program

- Full time health educator dedicated to the program
- Culturally-specific communication plans and materials to ensure public safety during Portland Harbor Cleanup
- Development of work plan in consultation with community partners
- Development of a small grants program for community partners



Budget and timeline

- Two year effort to establish the program and start outreach.
- Program cost for two years \$345,000.
- The three funding partners will share the cost evenly at \$115,000 over two years.
- Recruitment for the health educator will start in mid-January.



Questions



Thank you

Contacts

City of Portland

Annie Von Burg: Annie.vonburg@portlandoregon.gov

State of Oregon- Office of Natural Resources

Jim McKenna: Jim.j.mckenna@oregon.gov

Port of Portland

Ann Gravatt: Ann.gravatt@portofportland.com

Multnomah County Environmental Health

Andrea Hamberg: Andrea.hamberg@multco.us

