

Growing Transit Communities Plan

April Bertelsen

City Council

September 6, 2017

WE KEEP PORTLAND MOVING.



PBOT
PORTLAND BUREAU OF TRANSPORTATION

Purpose of this Hearing

- Inform you of the planning process and plan recommendations in the Growing Transit Communities Plan
- Recommend adoption of the Growing Transit Communities Plan
- Direct PBOT staff to amend the Transportation System Plan (TSP) to incorporate GTC Plan recommendations and projects during the next TSP update.



THE VIRTUOUS UPWARD SPIRAL OF TRANSIT INVESTMENT

BETTER ACCESS

Growing Transit Communities

(more focus on safety
and access to transit)

THE CITY
INVESTS IN
SAFETY & ACCESS TO
TRANSIT AND OPERATIONAL
IMPROVEMENTS

TRANSIT BECOMES A USEFUL
OPTION FOR MORE PEOPLE

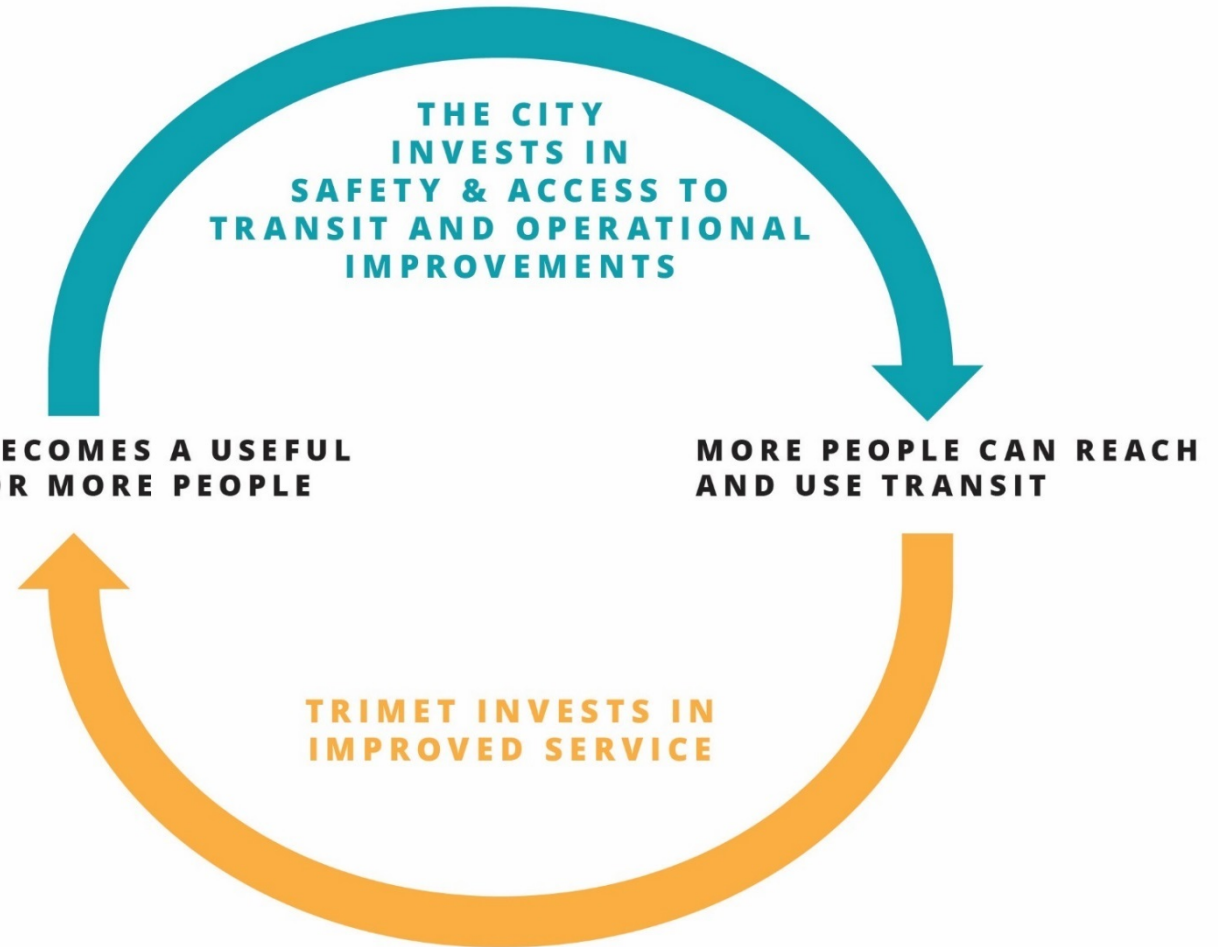
MORE PEOPLE CAN REACH
AND USE TRANSIT

Enhanced Transit Corridors

(more focus on transit
speed and reliability)

TRIMET INVESTS IN
IMPROVED SERVICE

BETTER SERVICE





www.trimet.org/future



Service Enhancement Plans

Creating a shared vision for making transit better

A Model: 122nd Ave TriMet Partnership



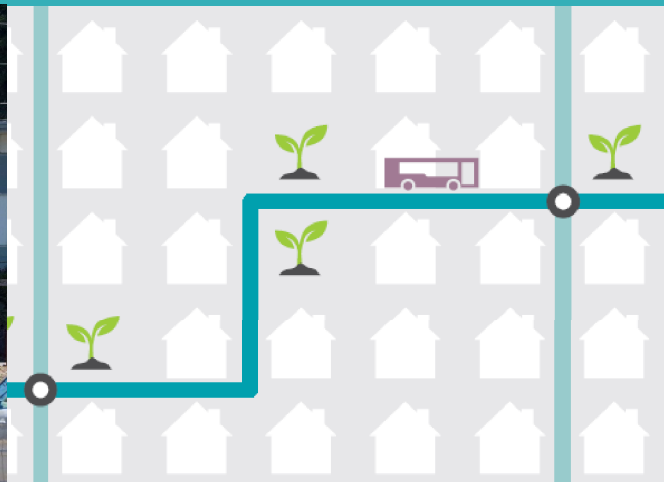
- TriMet commitment to provide Frequent Service along 122nd Ave, Bus line 73.
- City of Portland commitment to fund and build safety and access to transit improvements.
- Status: Several projects funded and in design. Construction in 2017 and 2019.

Growing Transit Communities Plan

Overall Plan Goal:

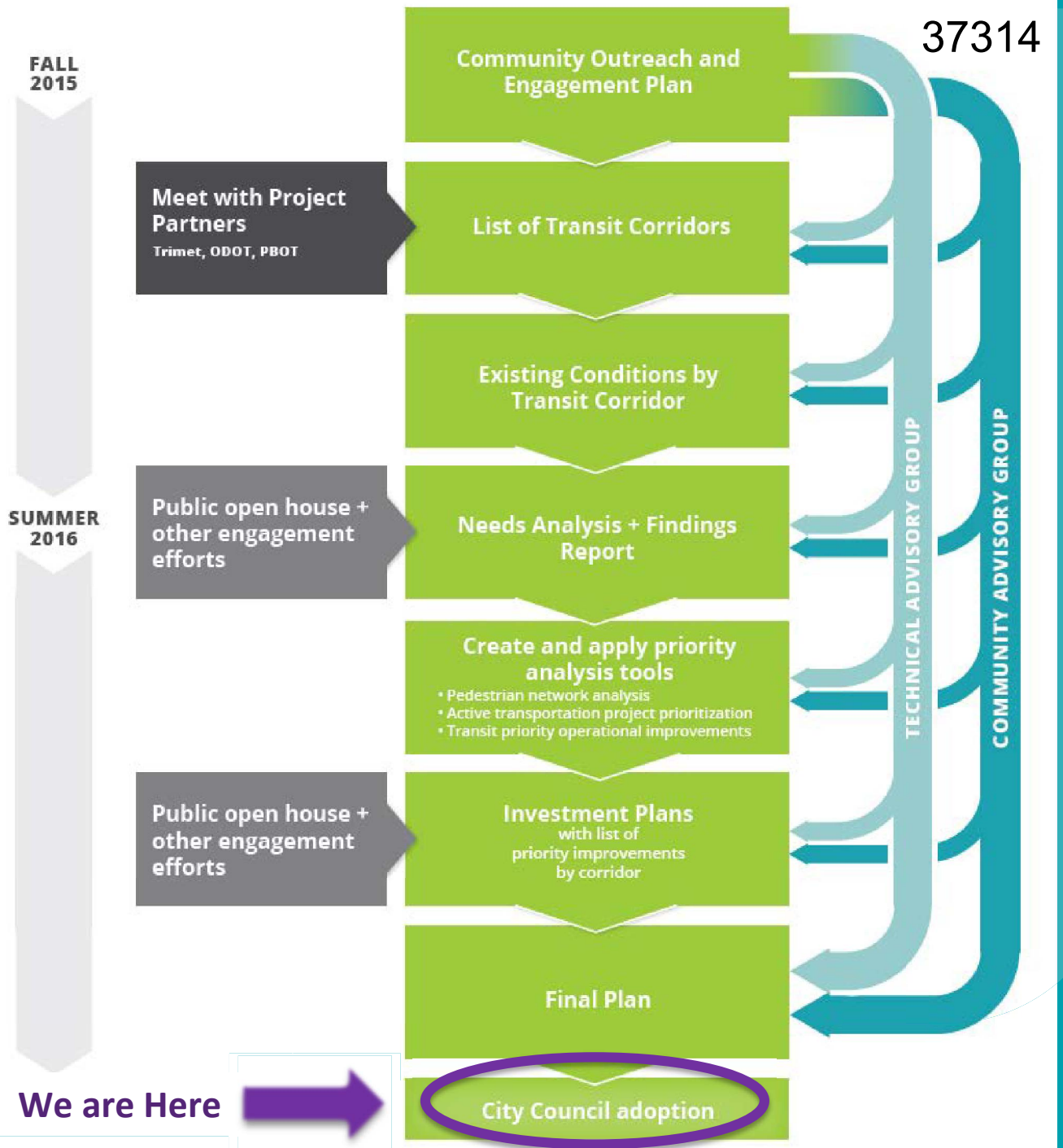
Develop transportation investment plans for a few transit corridors that help support both frequent transit service and multi-modal transit-oriented development.

All of these help grow transit communities.



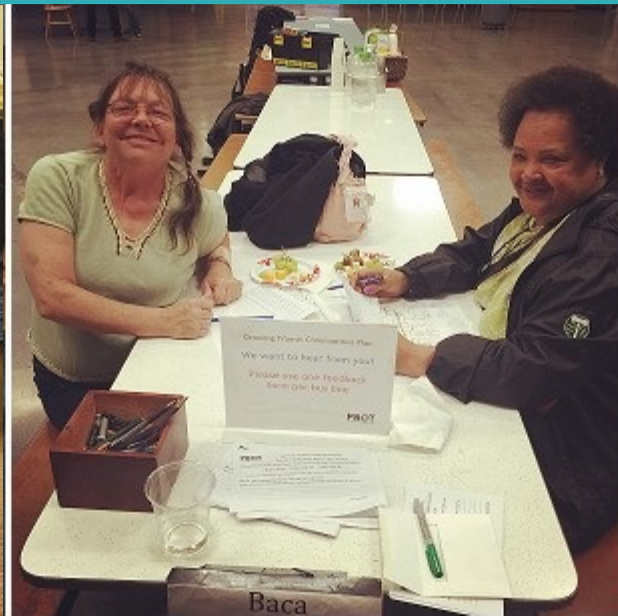
GTC Plan Process, Structure and Timeline

Summer 2015 -
Spring 2017



Community Engagement Summary

- 2 public open houses
- 2 online surveys
- 8 Community Advisory Group meetings
- Presentations to various committees and community groups
- Tabling at events in each corridor



Community Advisory Group

Representing:

- Transit riders
- OPAL
- Youth Environmental Justice Alliance (YEJA) & David Douglas H.S. students
- JOIN
- Rosewood Initiative
- East Portland Action Plan
- Oregon Walks
- Street Trust
- AORTA
- Portland Pedestrian Advisory Committee
- Various Neighborhood Associations



Selection of Transit Corridors



Initial Screen Criterion for Identifying Candidate Corridors:

Existing bus lines with less than Frequent Service currently

and

planned for future Frequent Service or improved service frequency in a TriMet Service Enhancement Plan.



BH Beaverton-Hillsdale Highway
Line 54
SW Capitol Highway to City Limits

CH Capitol Highway
Line 44
SW Terwilliger to PCC Sylvania

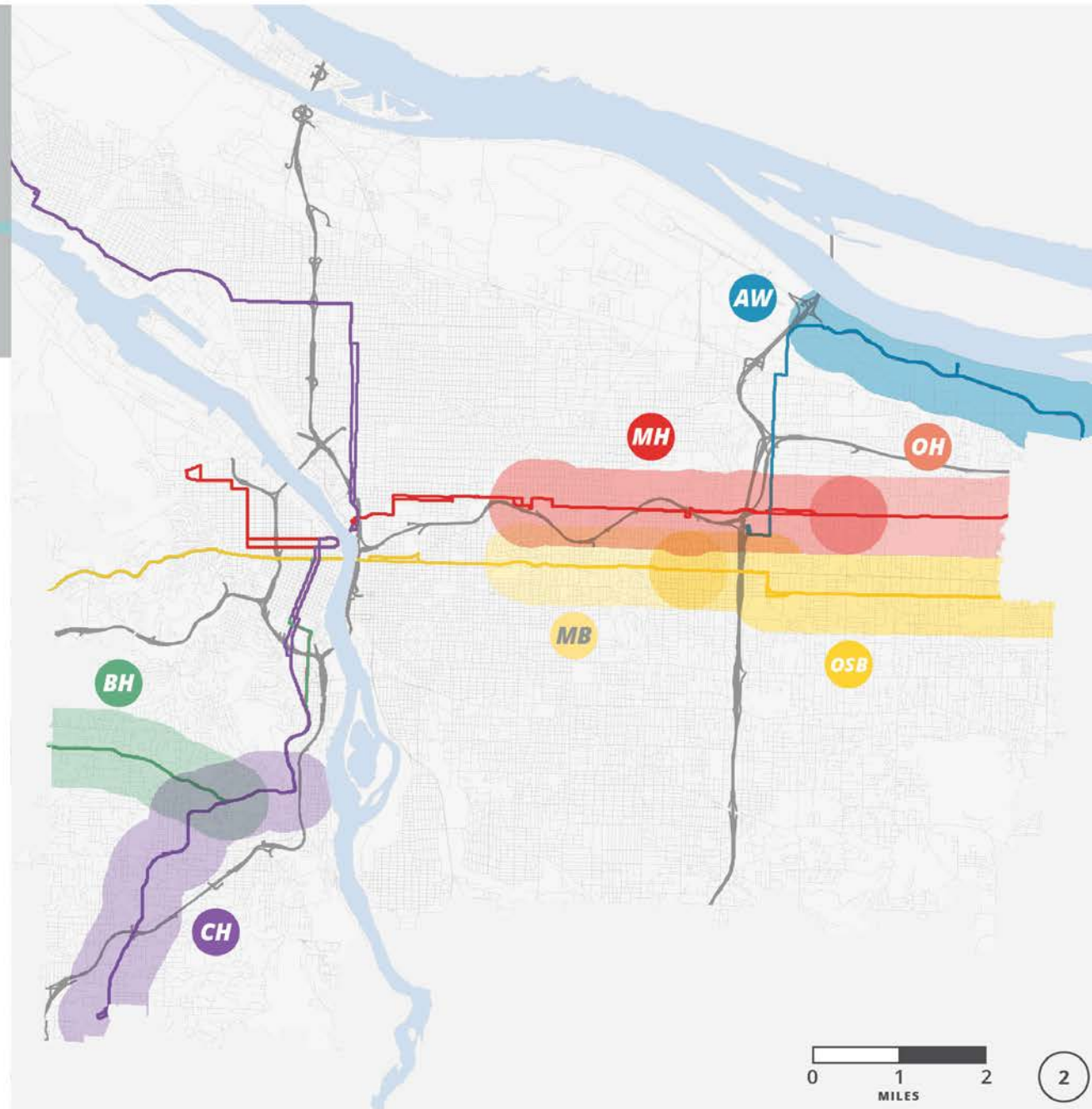
MH Middle Halsey
Line 77
Hollywood TC to NE 122nd Ave

OH Outer Halsey
Line 77
NE 122nd Ave to City Limits

MB Middle Burnside
Line 20
Cesar E Chavez to 82nd Ave

OSB Outer Stark-Burnside
Line 20
82nd Ave to 162nd Ave

AW Airport Way
Line 87
Sandy to City Limits



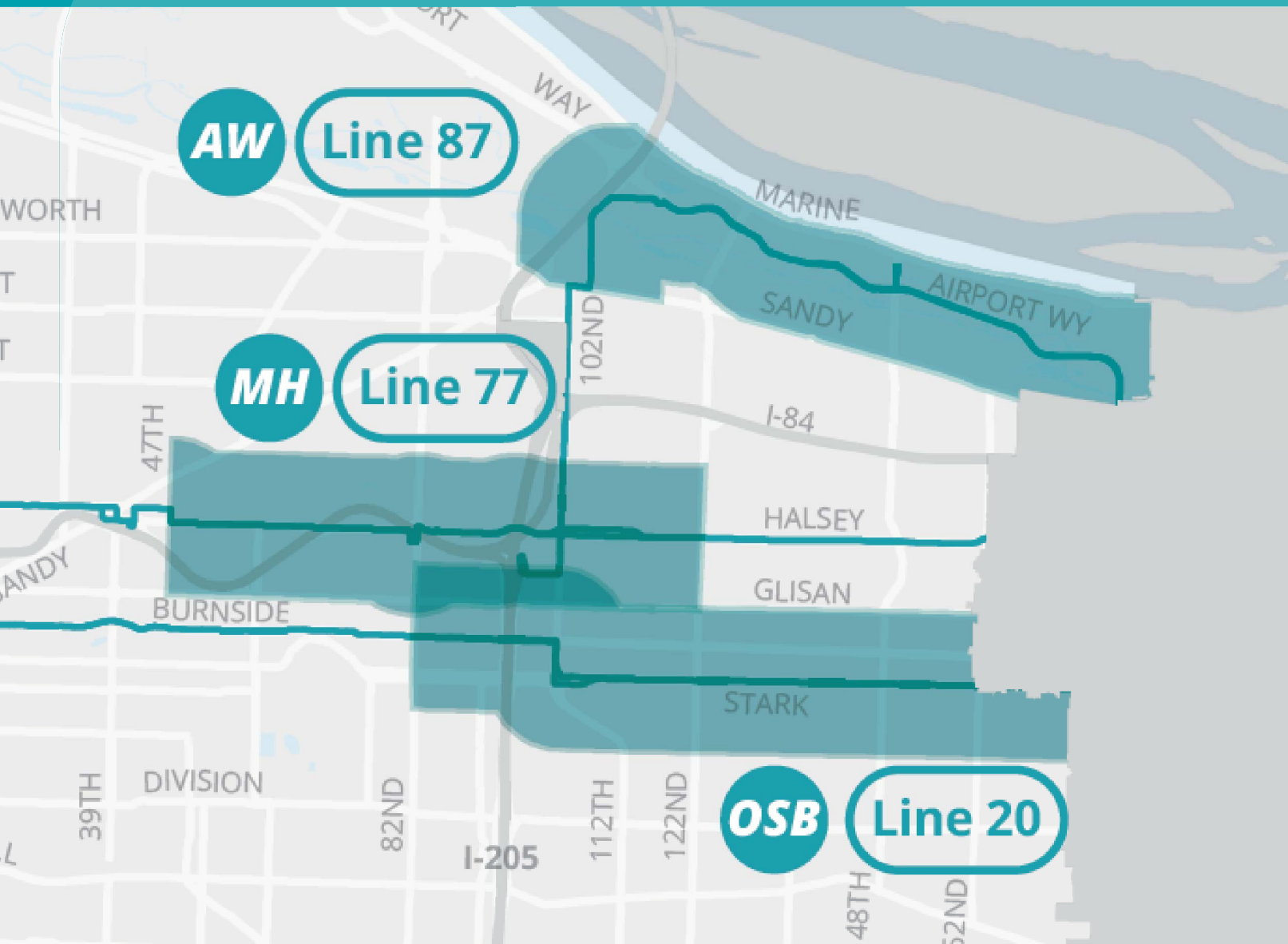
GTC Plan Corridors Selection

- Scored high on selection criteria:
 - Residential Density
 - Opportunity: Jobs and Education
 - Mixed-use Land Patterns
 - Equity
 - Access
- Strong need for additional planning
- Diversity of corridor typologies

	OPPORTUNITY	RESIDENTIAL DENSITY	MIXED-USE LAND PATTERNS	ACCESS	EQUITY
BH BEAVERTON-HILLSDALE					
CH CAPITOL HIGHWAY					
MB MIDDLE BURNSIDE					
OSB OUTER STARK-BURNSIDE					
MH MIDDLE HALSEY					
OH OUTER HALSEY					
AW AIRPORT WAY					

Selected GTC Plan Corridors

37314



Middle Halsey - line 77

- NE Halsey St: 47th - 126th

Outer Stark-Burnside - line 20

- E Burnside: 82nd - 102nd
- SE 102nd: Burnside - Stark
- SE Stark: 102nd - 162nd

Airport Way - line 87

- NE 105th: Sandy - Holman
- NE Holman: 105th - Airport Wy
- Airport Wy: Holman - City Limits

Note: Corridor study area includes a ½-mile buffer from these streets.

Existing Conditions and Needs Analysis

- Identify needs/projects based on:
 - Past plans
 - Identify deficiencies from existing conditions
 - Community input



Evaluation and Prioritization

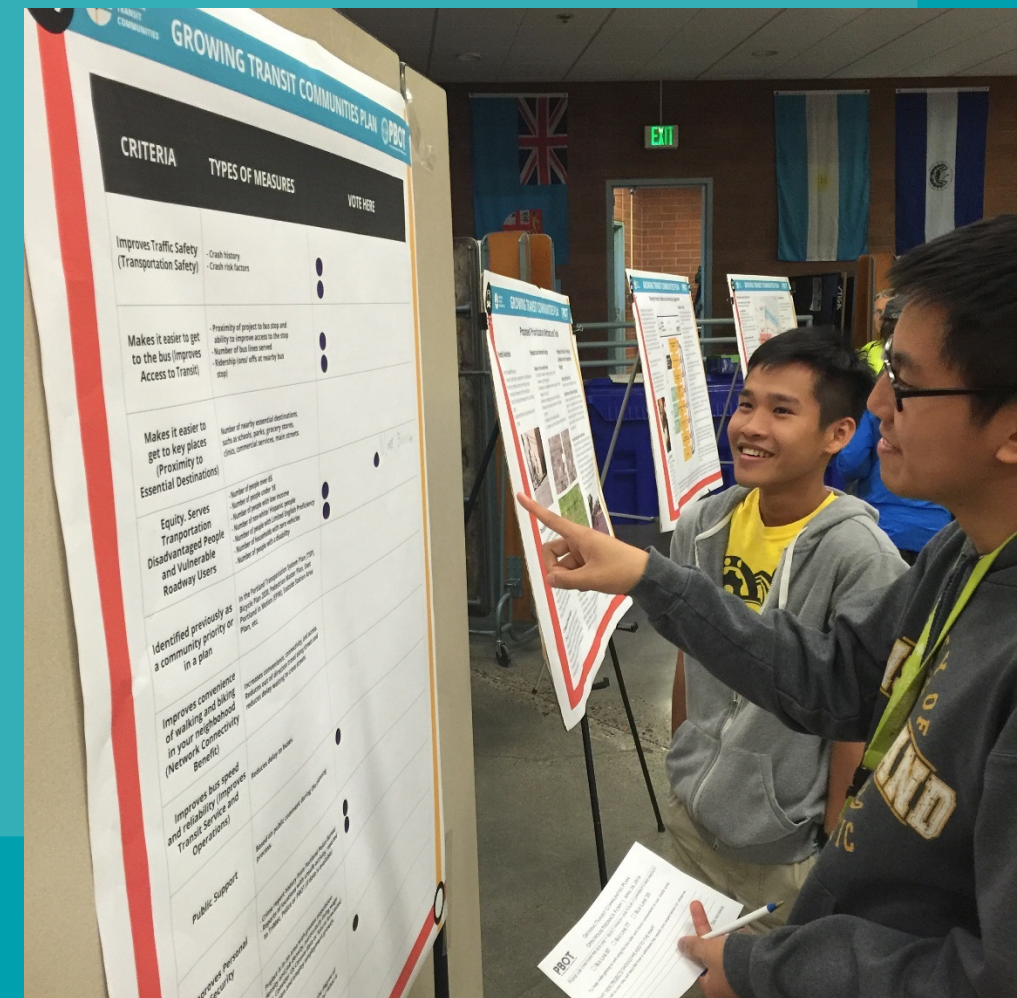
- Used a data driven process.
- Criteria and measures for prioritizing projects.
- The criteria most important to community were weighted double.
- Evaluate, score and compare candidate projects.



Criteria for Prioritizing Projects

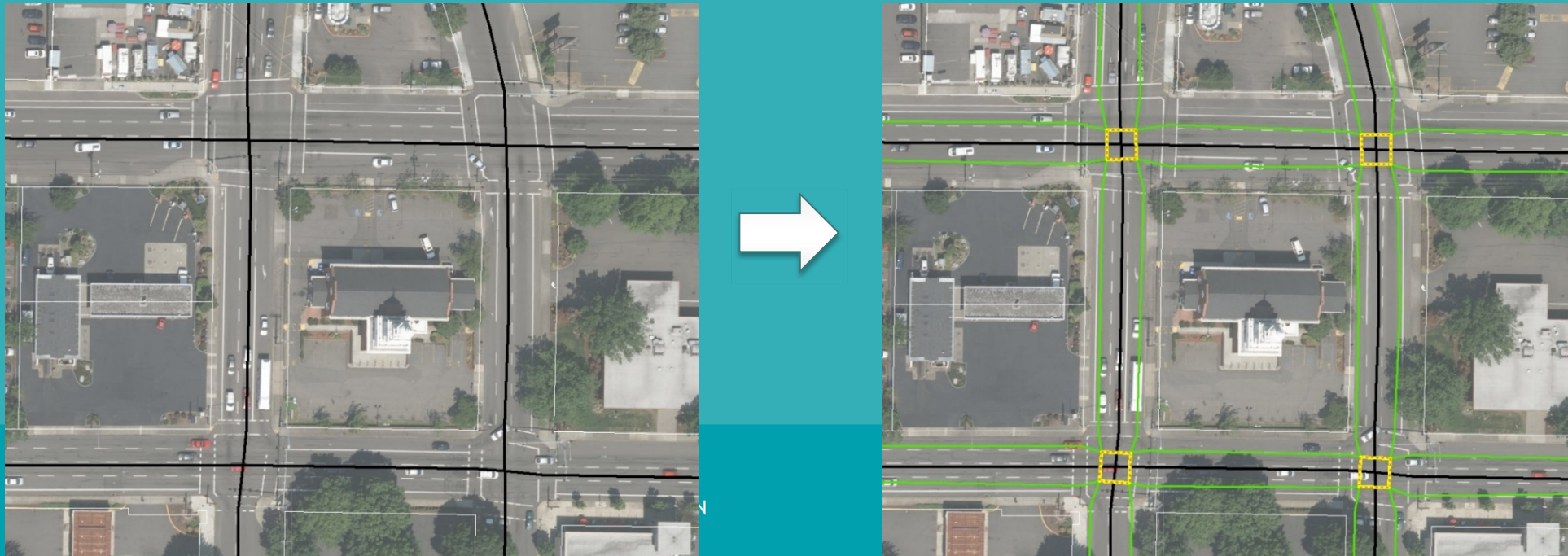
- Transportation safety
- Making it easier to get to the bus stop
- **Equity**
- Makes it easier to get to key places
- Identified in a plan or prioritized previously
- Network connectivity benefit
- Serve the most people nearby
- Improves bus speed and reliability
- Public support/stakeholder input

Bold criteria weighted double



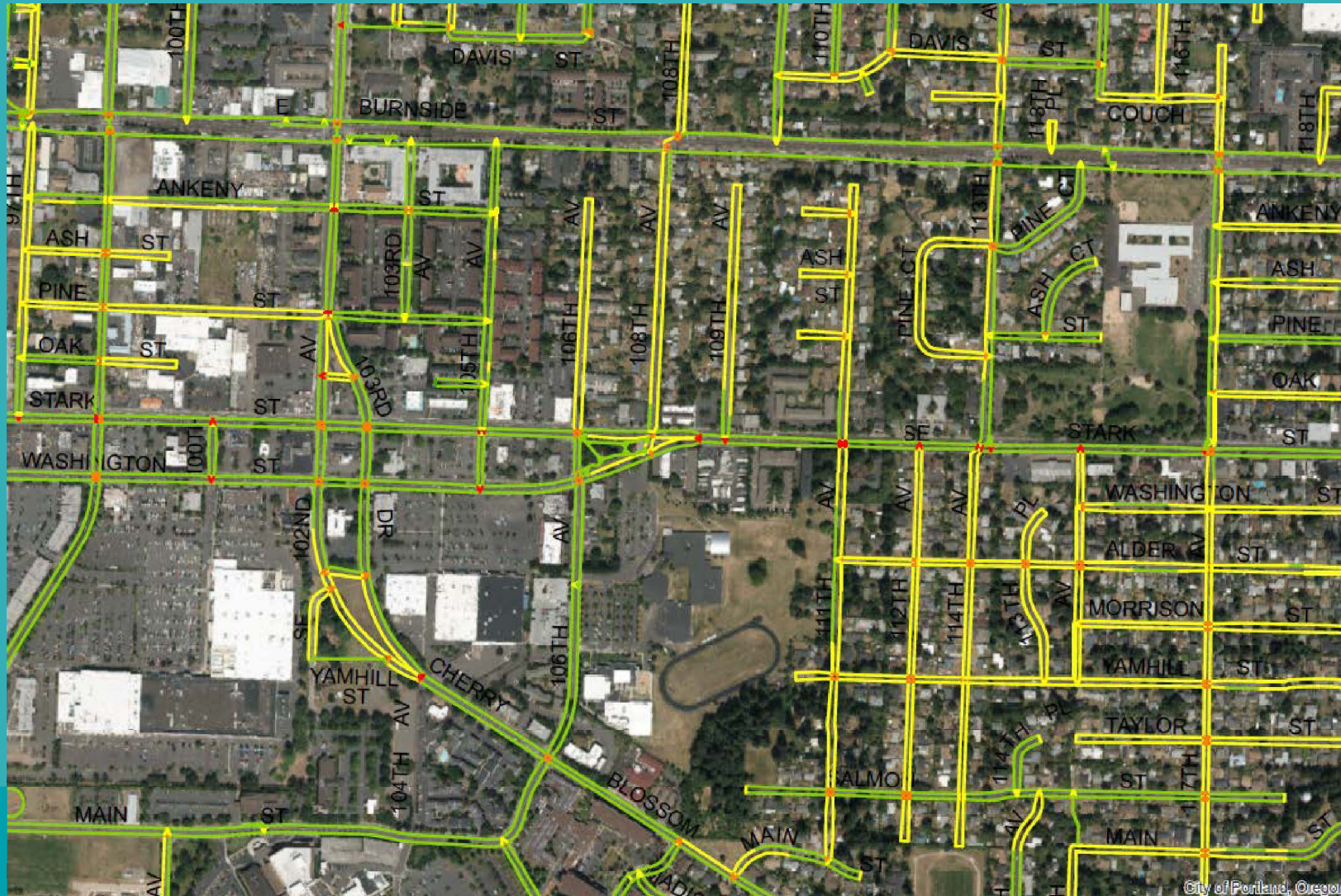
Building a Routable Pedestrian Network

- Help identify projects with the most access and connectivity benefit
- Unzip the street centerline to simulate sidewalks and crosswalks.
- Calculate impedance along streets and at intersections/crosswalks based on the difficulty of the walking environment.
- Model is sensitive to posted speed limits, number travel lanes, crossing treatments and presence of sidewalks



Building a Routable Pedestrian Network

Line 20: Outer Stark-Burnside



Considerations for Prioritizing & Grouping Projects

- Active Trans Priority Tool Score for criteria measures
- Community/Political Support
- Funding Opportunities
- Cost Considerations
- Technical Feasibility
- Bundling projects for implementation



GTC Plan Recommendations

Corridor Investment Plans:

Identify and prioritize the most beneficial transit-supportive projects:

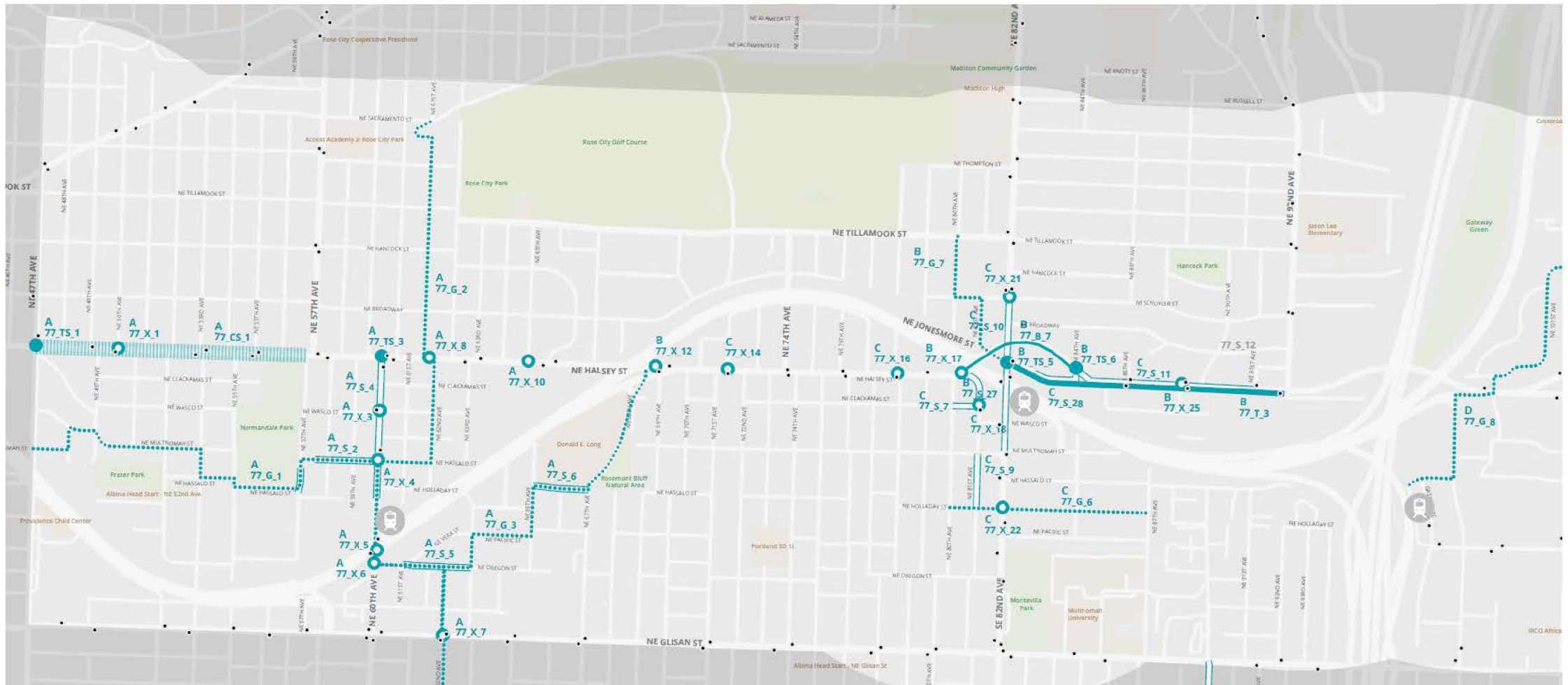
- Pedestrian and bicycling safety & access to transit
- transit stop improvements
- transit operational improvements



Corridor Investment Plans

Tier 1 Recommend Project, by the numbers:

- 9 Bikeway projects
- 13 Sidewalk projects
- 13 Traffic signal projects
- 3 Corridor safety projects
- 4 Trail projects
- 38 Crossing projects
- 20 Pedestrian improvements on local streets
- 10 Neighborhood Greenway projects



Map continues on next page →

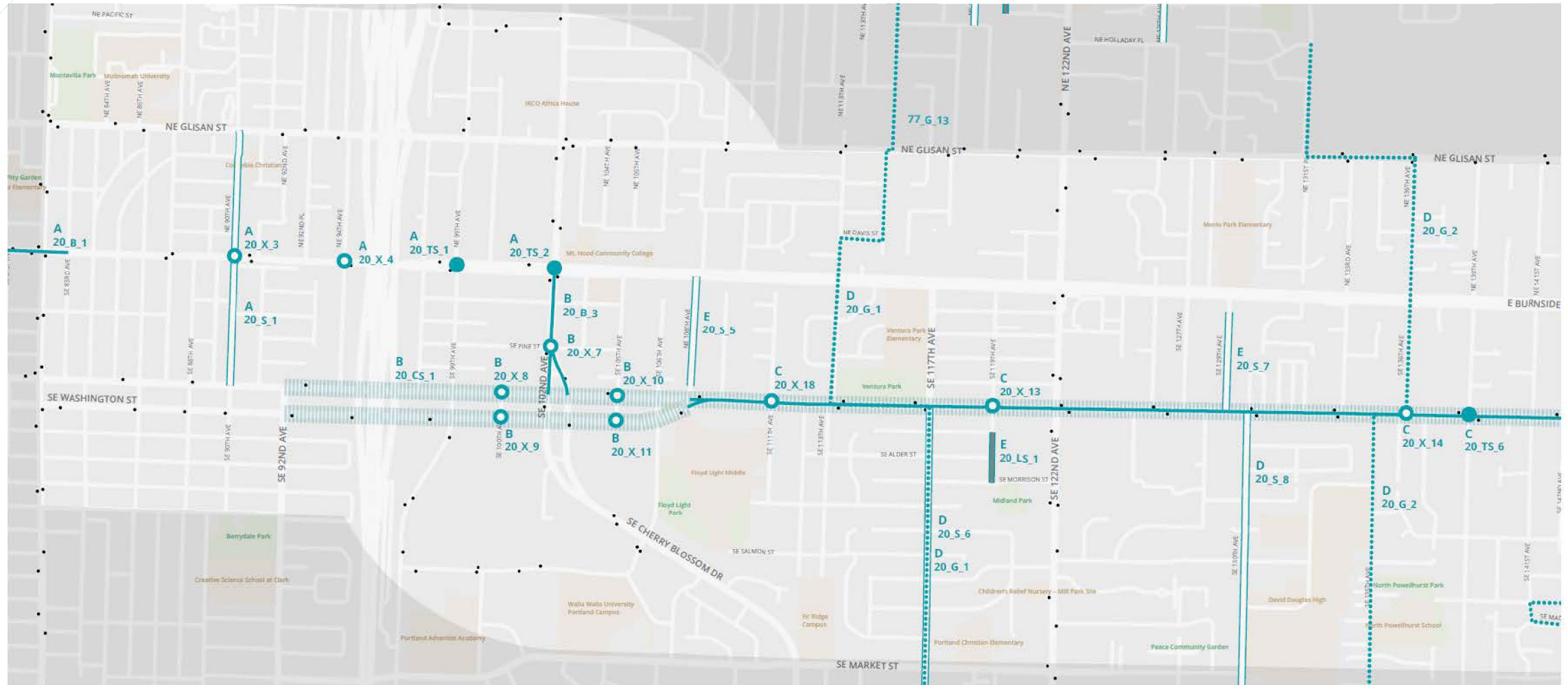
The Middle Halsey Corridor has six bundles of recommended projects:

- **A** 60th MAX Station Area Improvements
- **B** NE Halsey St Safety and Access to Transit
- **C** 82nd MAX Station Area Improvements
- **D** Parkrose Heights Safe Routes to School
- **E** Outer Halsey Local Street Improvements
- **F** 122nd Ave Corridor Improvements

Recommended improvements	
Crossing	
Traffic safety	
Corridor safety	
Bike lane	
N'hood greenway	
Sidewalks	
Local street	
Trail	
MAX stop	
Bus stop	
Bus line	
School	
Park	

LINE 20 - OUTER STARK-BURNSIDE RECOMMENDED PROJECTS

37314

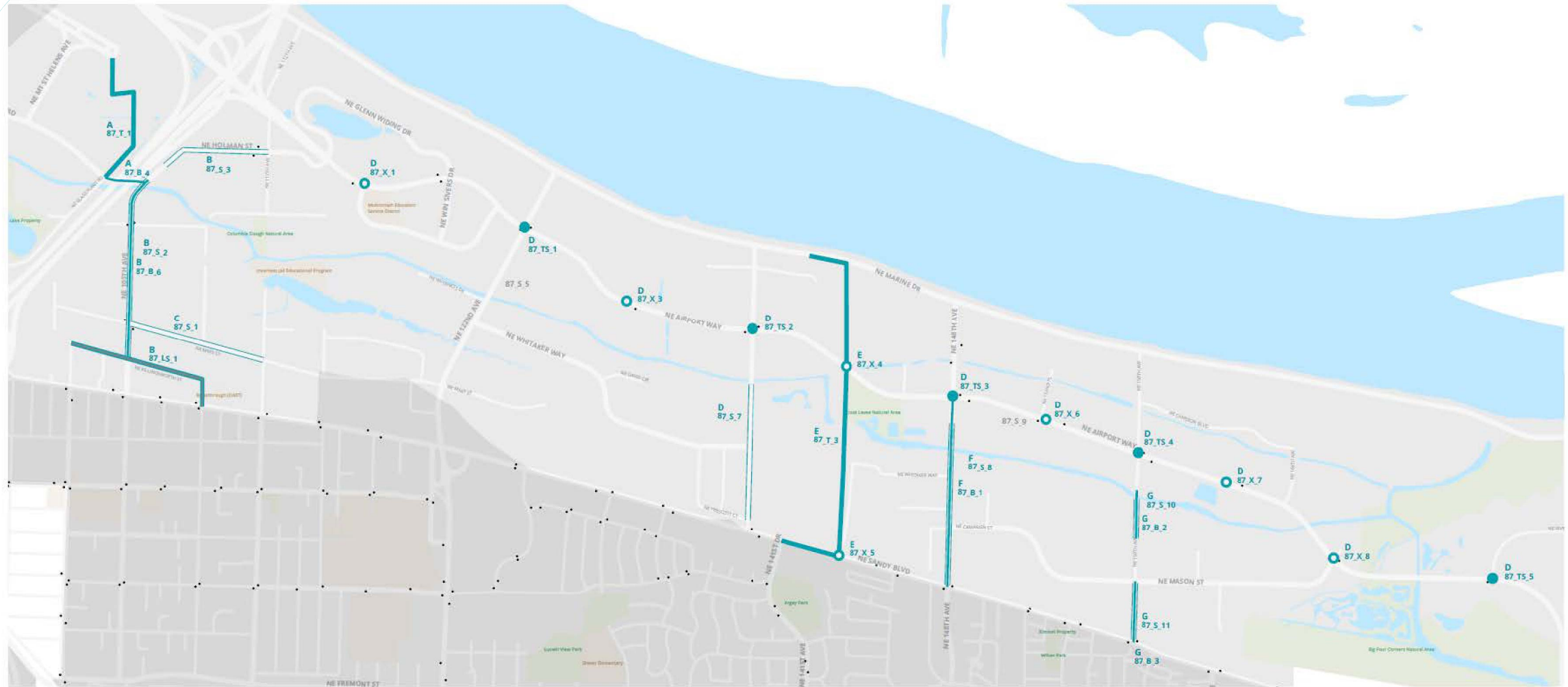


Map continues on next page →

The Outer Stark-Burnside Corridor has five bundles of recommended projects:

- **A** East Burnside Safety and Access to Transit
- **B** Stark/Washington Corridor Improvements
- **C** Outer Stark Safety and Access to Transit
- **D** David Douglas Safe Routes to School
- **E** Outer Stark Local Street Improvements

Recommended improvements	
Crossing	
Traffic safety	
Corridor safety	
Bike lane	
N'hood greenway	
Sidewalks	
Local street	
Trail	
MAX stop	
Bus stop	
Bus line	
School	
Park	



The Outer Stark-Burnside Corridor has seven bundles of recommended projects:

- **A** Cascade Station Trail
- **B** NE Holman/105th Corridor Improvements
- **C** NE Marx St Pedestrian Improvements
- **D** Airport Way Safety and Access to Transit
- **E** Cross Levee Trail
- **F** NE 148th Ave Corridor Improvements
- **G** NE 158th Ave Corridor Improvements

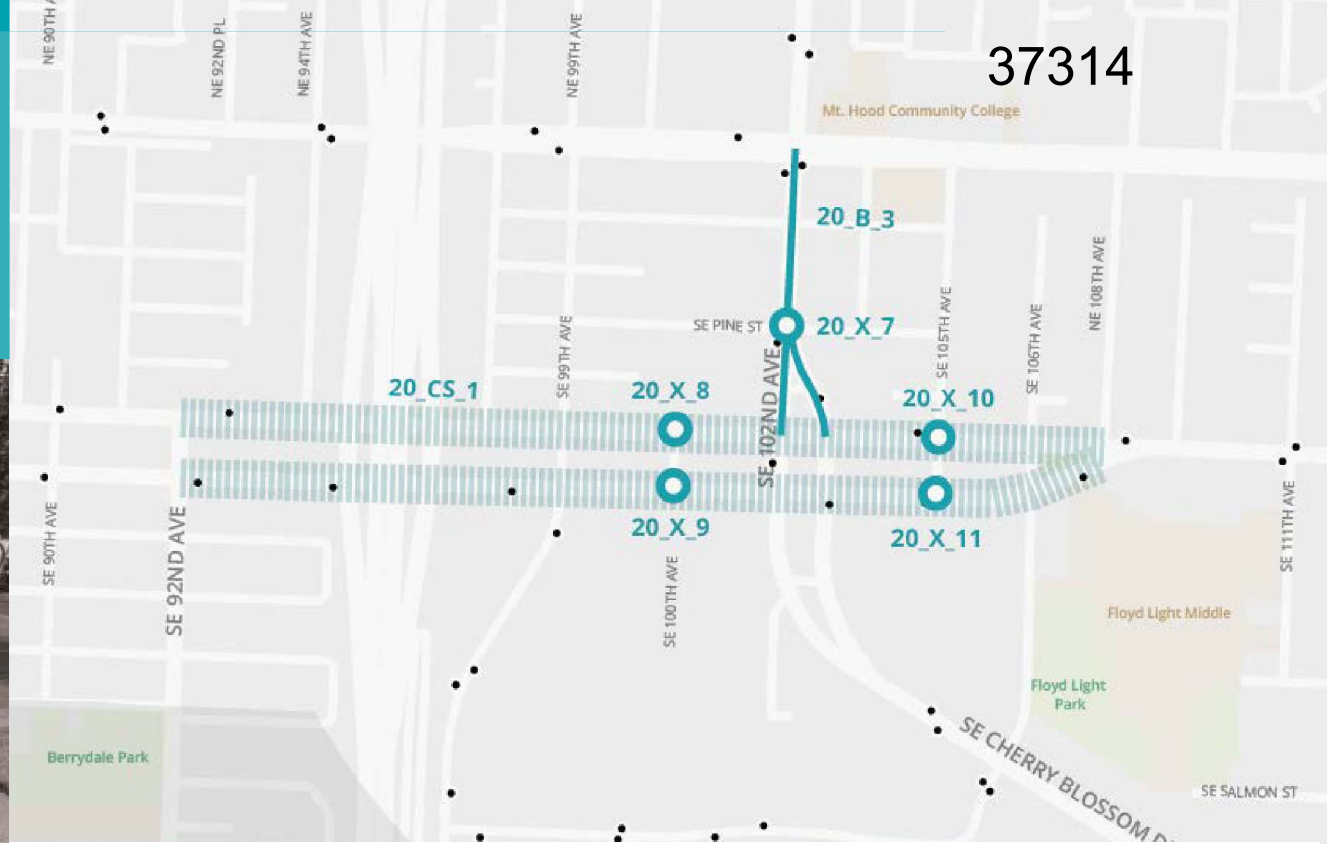
Recommended improvements	
Crossing	
Traffic safety	
Corridor safety	
Bike lane	
N'hood greenway	
Sidewalks	
Local street	
Trail	
MAX stop	
Bus stop	
Bus line	
School	
Park	

Corridor Investment Plans

- Bundle some projects
- Identify Tier 1 and Tier 2 priorities



Corridor Investment Plan Project Bundle Example



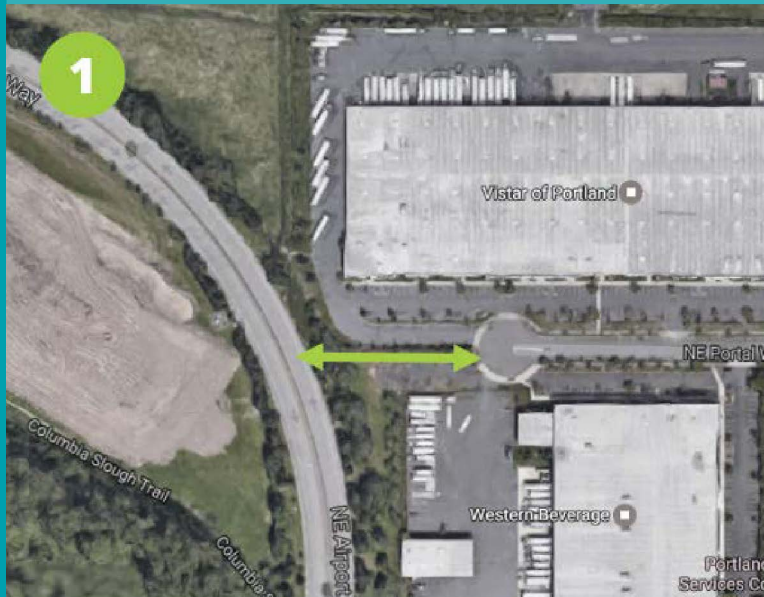
37314

INDIVIDUAL PROJECT DETAILS

ID	Type	Location	Description	Tier
20_CS_1	Corridor Safety	SE Stark-Washington Couplet (92nd - 108th)	Corridor safety improvements: lane reconfiguration, protected bike lanes, pedestrian islands, transit islands, bus lanes, and lighting.	1
20_X_10	Crossings	SE Stark St at 105th Ave	Add a signalized pedestrian crossing.	1
20_X_11	Crossings	SE Washington St at 105th Ave	Add a signalized pedestrian crossing.	1
20_B_3	Bikeways	SE 102nd Ave (Burnside - Stark)	Add bike lanes to fill in gaps.	1
20_X_8	Crossings	SE Stark St at 100th Ave	Add a signalized pedestrian crossing.	2
20_X_9	Crossings	SE Washington St at 100th Ave	Add a signalized pedestrian crossing.	2
20_X_7	Crossings	SE 102nd Ave at Pine St	Add an enhanced pedestrian crossing.	2

GTC Plan Recommendations

Future public connections across private property

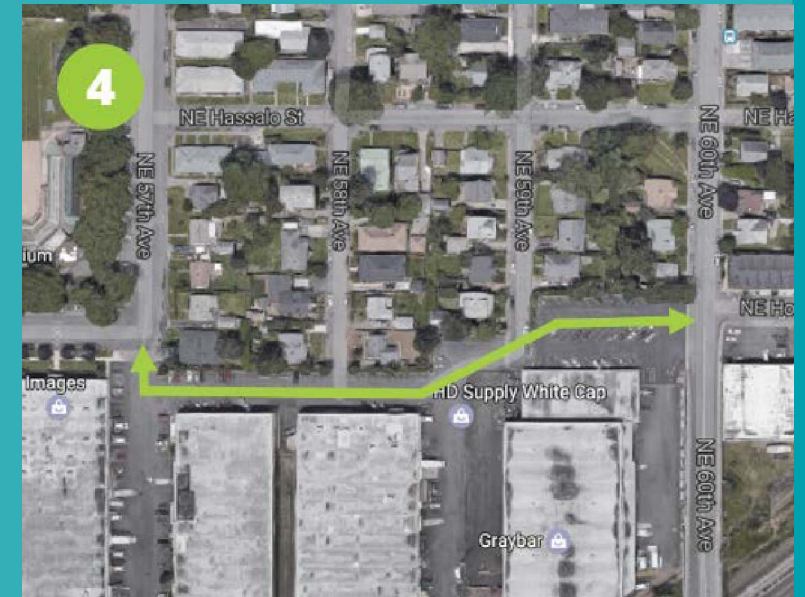


1) Between NE Airport Way and NE Portal Way



2) Between NE 81st Ave and NE 82nd Ave at NE Clackamas

3) Between NE 81st Ave and NE 82nd Ave at NE Halsey



4) Between NE 57th Ave and NE 60th Ave at NE Hassalo to NE Holladay

GTC Plan Recommendations

Programs and Other Initiatives

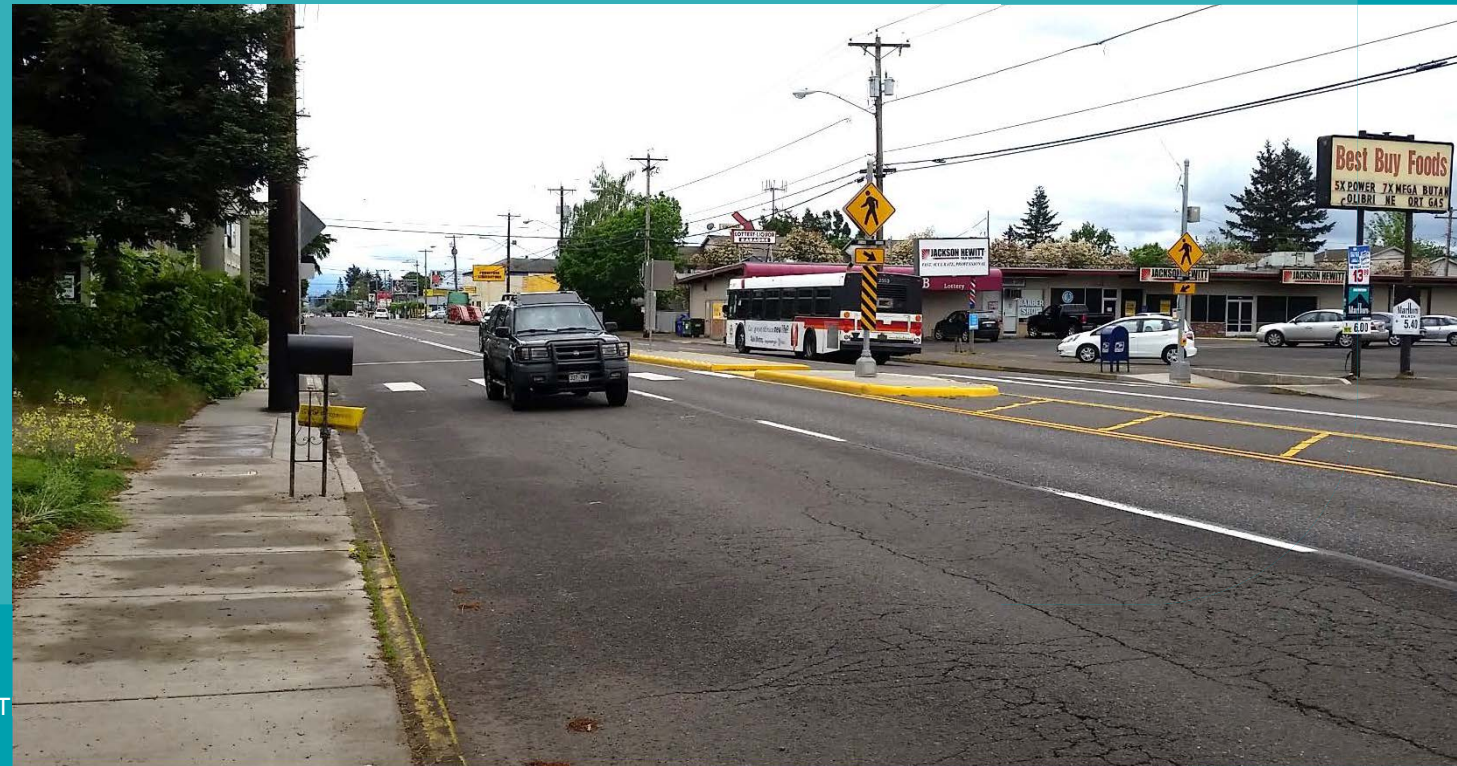
- Info kiosks and other Transportation Demand Management (TDM)
- Better lighting and other Crime Prevention Through Environmental Design (CPTED)
- Murals and other Livable Streets & Placemaking elements
- Transit Youth Pass



GTC Plan Recommendations

Future Studies

- Outer Stark Corridor Plan (east of Gateway)
- Burnside & 82nd Ave Traffic Circulation Study
- 82nd Ave Streetscape Plan (NE Holladay to NE Schuyler)
- Airport Way & I-205 Transit Study



Early Implementation Achievements

- Some project funding secured since the planning process began for a few projects
- Transit Youth Pass
- TriMet service increases on Line 20, 77 and line 87
- New funding for transit service in the State Transportation Funding Bill

Funded:

Halsey St Safety & Access to Transit

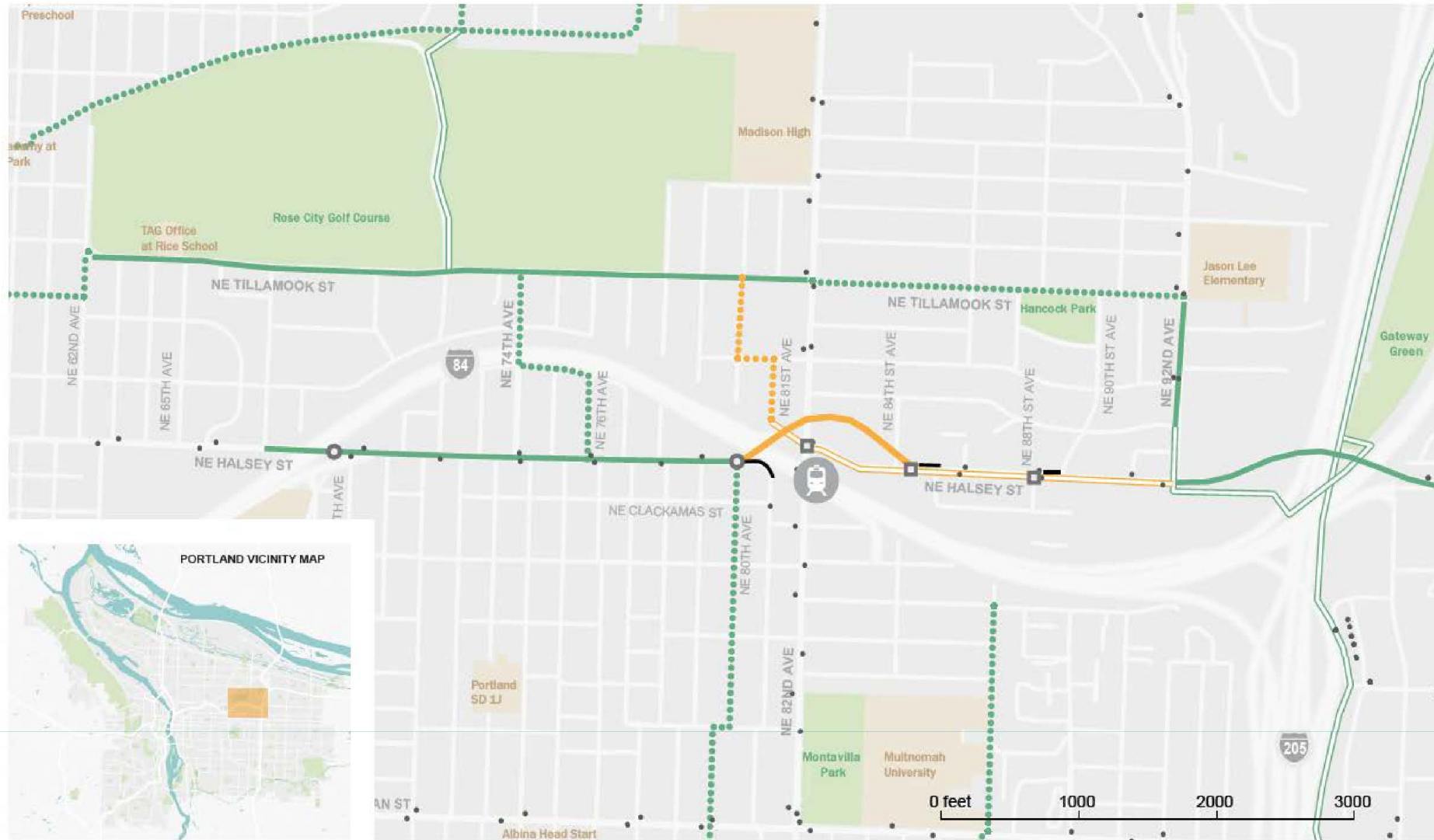
- Funding secured: \$5 Million of local funds and Regional Flexible Funds Allocation (2019-2021)
- Ranked #1 recommended project in the region

HALSEY

SAFETY AND ACCESS TO TRANSIT

v.12Dec2016

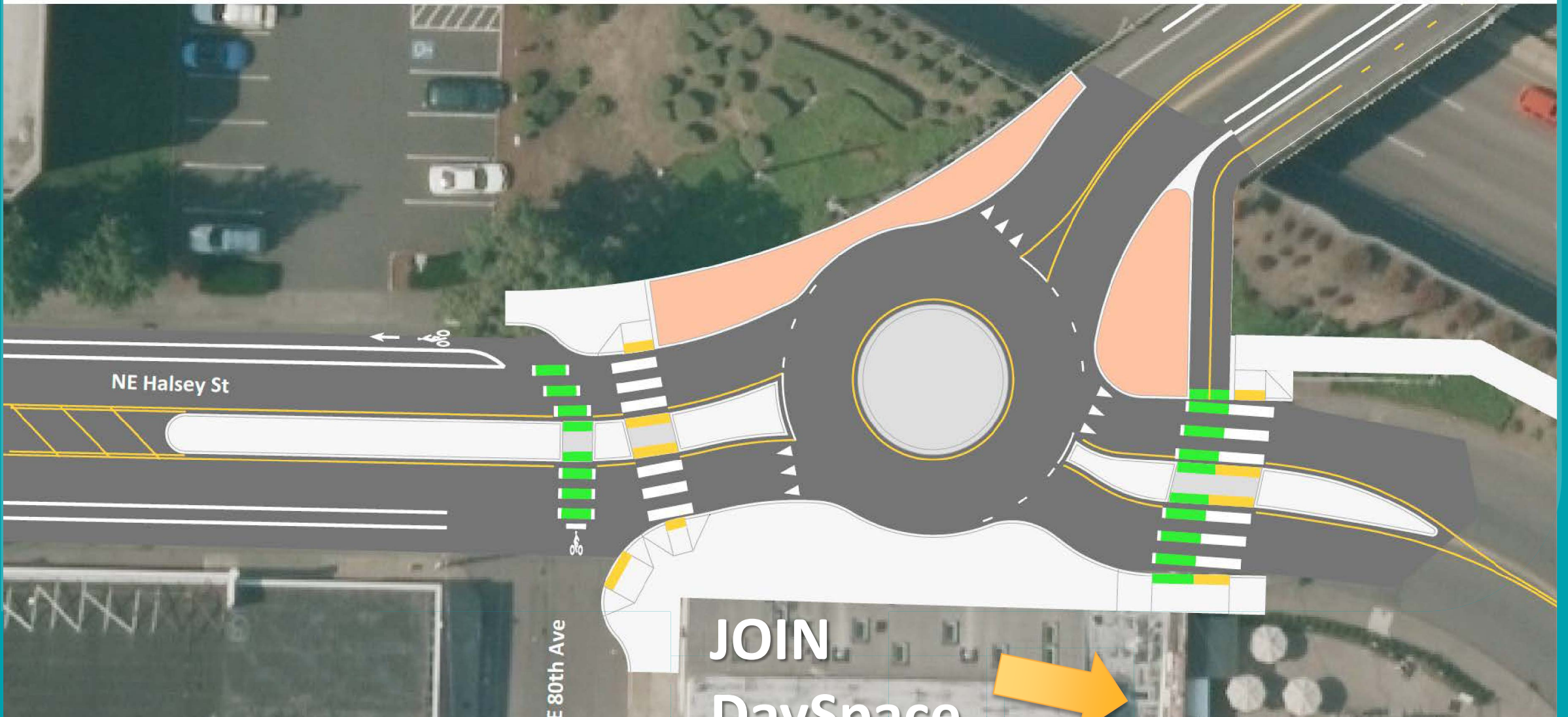
37314



Halsey St Safety & Access to Transit

37314

Growing Transit Communities: Mini-Roundabout Concept at NE 80th Ave & NE Halsey St



Halsey St Safety & Access to Transit

Multimodal
Improvement at
NE Jonemore St
& 82nd Ave



Halsey St Safety & Access to Transit

Growing Transit Communities: NE Halsey St Multi-use Path Concept East of NE Jonesmore St



Funded: Outer SE Stark Improvements

Safer Access to Bus Shelters

- Funding: \$220,000 of Fixing Our Street program funds
- Add enhanced pedestrian crossing at:
 - 146th Ave by Four Corners School
 - 119th Ave

Additional Safety Improvements (To Be Scoped)

- Funding: \$500,000 of Vision Zero funds



SE Stark and 146th Ave,
looking west

Previous TriMet Bus Service Increases

March 2016: Line 87 - Airport Way/181st

- Added more buses on weekdays during mid-day between Gateway Transit Center and Powell Blvd/182nd.

March 2017: Line 20 - Burnside/Stark:

- Added more frequent buses on weekdays during peak and mid-day hours to better meet demand.

Upcoming TriMet Bus Service Increases

September 2017: Line 77 - Broadway/Halsey

- Adding more buses on weekdays during mid-day from every 30 minutes to about every 20 minutes to better match ridership demand.

March 2018: Line 87 - Airport Way/181st

- Split into two bus lines. Line 87 will now run between Gateway Transit Center and SE 182nd Ave & SE Powell Blvd.
- Add weekend service.
- All trips between Gateway Transit Center and SE 185th Ave/Rockwood will be extended to SE 182nd Ave & Powell Blvd.

PBOT Staff Recommendations:

- Adopt the Growing Transit Communities Plan.
- Direct PBOT Staff to amend the Transportation System Plan (TSP) to incorporate GTC Plan recommendations and projects during the next update.
- Encourage TriMet to continue increasing bus service along bus lines 87, 77 and 20 in line with the TriMet Service Enhancement Plan vision.
- Gratefully acknowledge the excellent work and dedication of community members who participated.

Questions



PRESERVE
what we have
built and
OPERATE
it well



Embrace
VISION
ZERO



BUILD A
FUTURE
where all can
grow and thrive



Effectively
MANAGE
CITY ASSETS



Contribute to the
HEALTH AND
VITALITY
of our people and
our planet

Learn more.

www.portlandoregon.gov/transportation/GTCplan