

Obo Addy Legacy Project



STATE OF THE ARTS

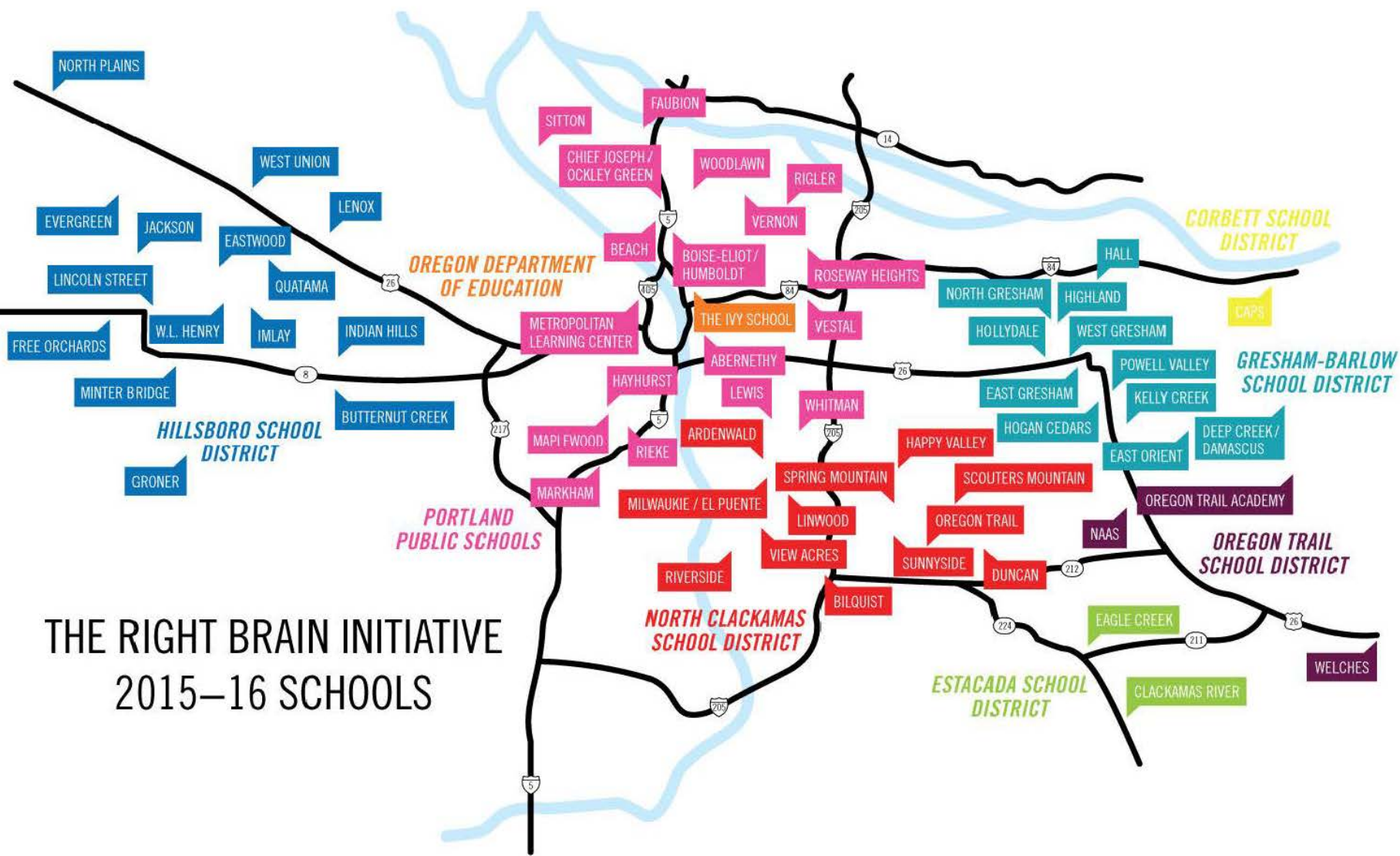
Jan Robertson





The logo for 'The Right Brain Initiative' is composed of several lines of text. The top line features the word 'right' in a lowercase, rounded font where the letters are colored: 'r' is blue, 'i' is green with a green dot, 'g' is purple, 'h' is pink, and 't' is purple. Above the 'g' is the word 'THE' in a small, black, uppercase sans-serif font. Below 'right' is the word 'BRAIN' in a bold, uppercase, rounded font where each letter is a different color: 'B' is orange, 'R' is pink, 'A' is green, 'I' is brown, and 'N' is red. At the bottom is the word 'INITIATIVE' in a bold, black, uppercase sans-serif font.

THE
right
BRAIN
INITIATIVE



**THE RIGHT BRAIN INITIATIVE
2015-16 SCHOOLS**







¡LAS ESCUELAS PÚBLICAS DE PORTLAND

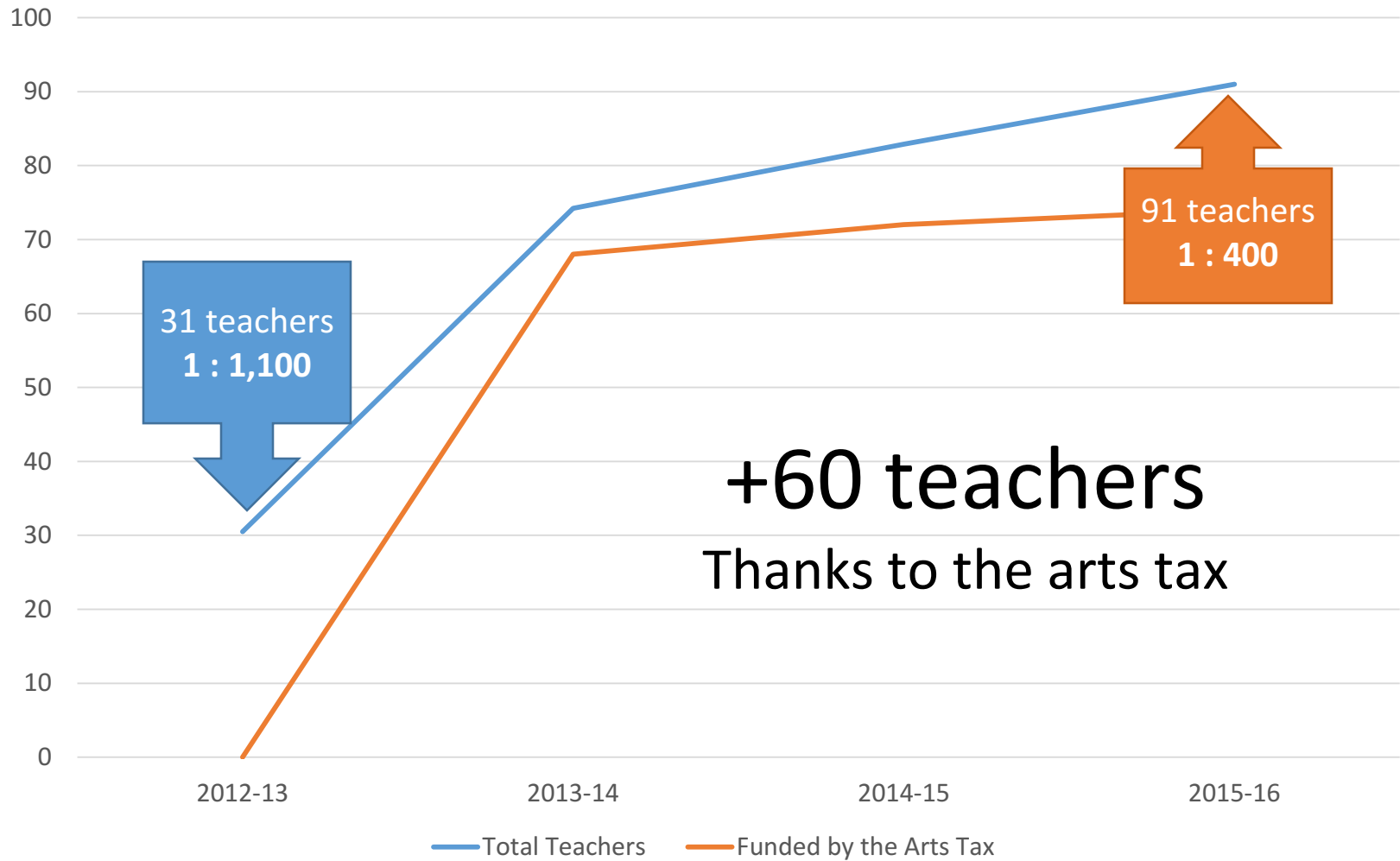
ADORAN LAS ARTES!

**¡GRACIAS, ARTS TAX, POR TRAERLES
PROFESORES DE ARTE A NUESTROS HIJOS!**

THANK YOU, ARTS TAX, FOR BRINGING ARTS TEACHERS TO OUR KIDS!

[#PDXLOVESART](#)

Arts specialists serving K-5 students in Portland







FRIZ



BRAVO Youth Orchestra
at Rosa Parks



**Regional Arts &
Culture Council**

20 YEARS



30 YEARS



35 YEARS



PORTLAND MERCADO



NOTICE
RESTROOM
←
BANOS

A T H

Wall of Funders
Muro
Thank you to all our supporters and donors who have helped us get started.

PIESTO

Authentic Mexican






Siegner and Company
Commercial Services, IT, Maintenance, Construction
of Educational Institutions
(503) 735-3001
www.siegnerandcompany.com



NO PARKING
EXCEPT FOR
LOADING AND UNLOADING
PASSENGERS
OR MERCHANDISE

SPENCER
CUNNINGHAM
-FR



BAMBOO

BAMBOO

YOU
SOUND
BAMBOO



PARKS

Loowit View

NE 127th & Beech – Mauricio Robalino

Gateway Discovery Park

NE 106th & Halsey – Horatio Law

Ventura Park

SE 116th & Division – Pete Beeman on design team

Mt. Tabor Public Access Trail

SE 66th & Division – Adam Kuby on design team

Lynchview Park

SE 167th & Market



Stratum
Mikyong Kim
near Sellwood Bridge



River Guardian
Lillian Pitt & Mikkel Hilde
South Waterfront





Tom's Song
Rhiza a+d
FORE Development,
Waterline Apartments





Tom's Song
Rhiza a+d
FORE Development,
Waterline Apartments

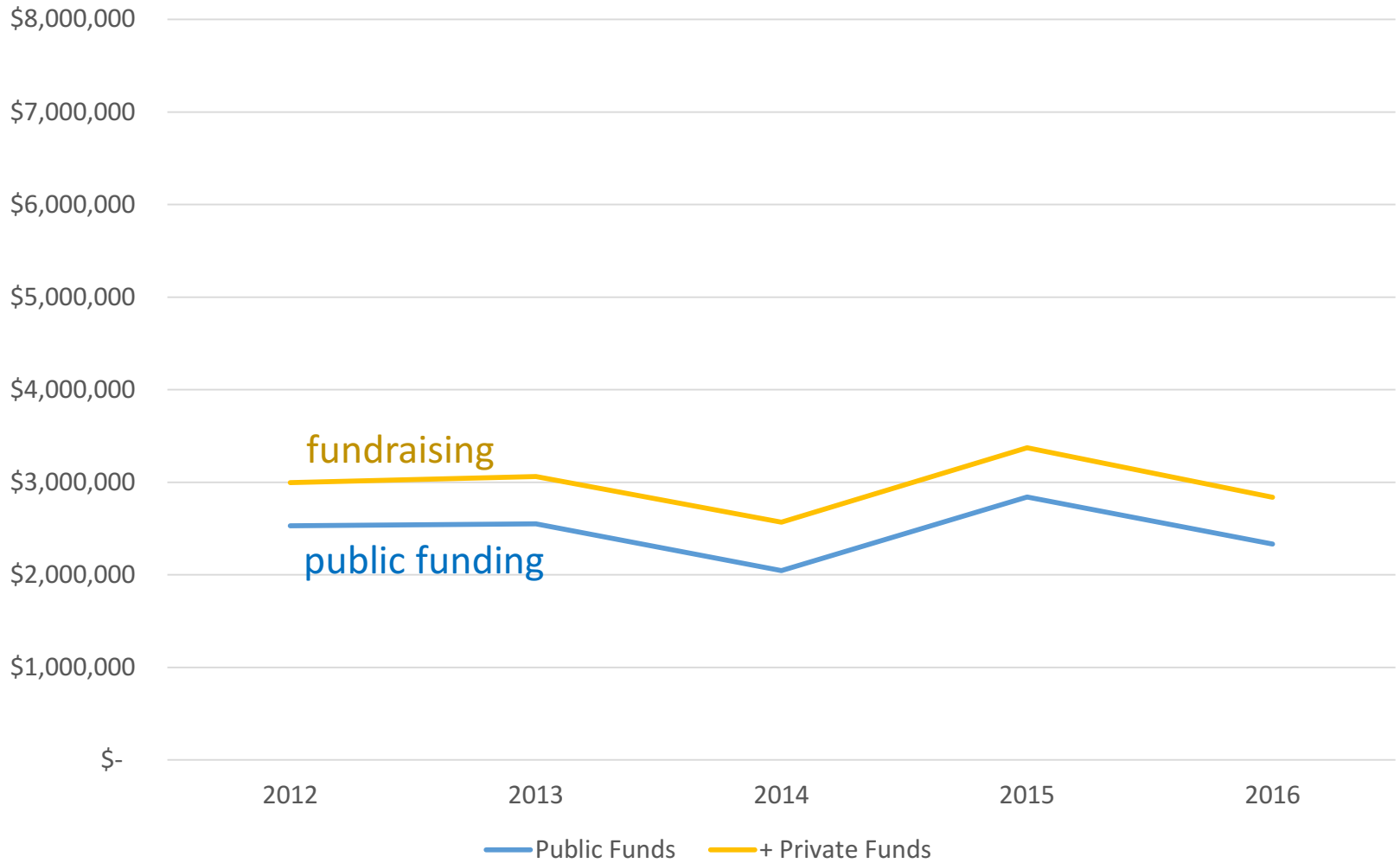




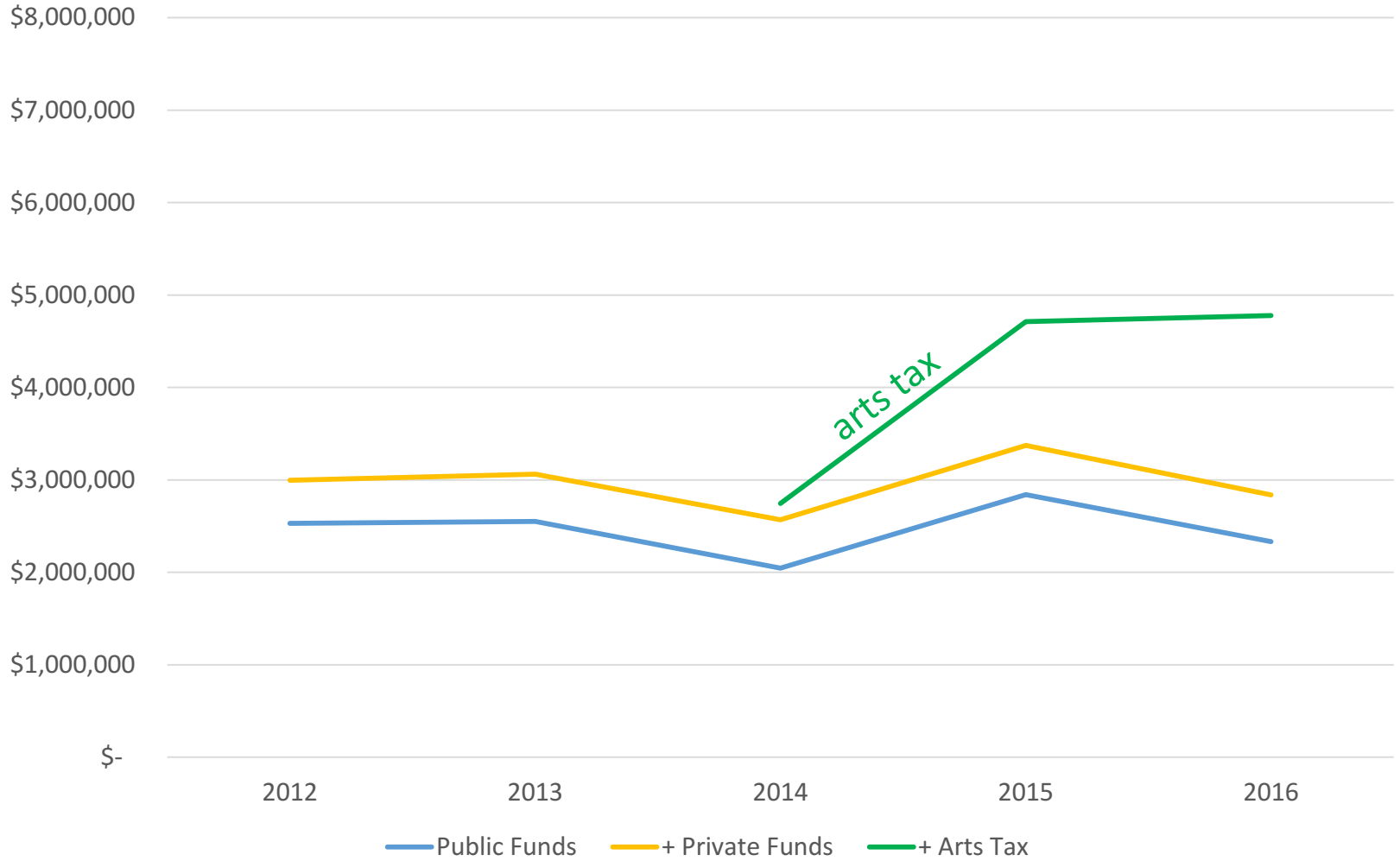
The Fair-Haired Dumbbell Building

Susheela Jayapal

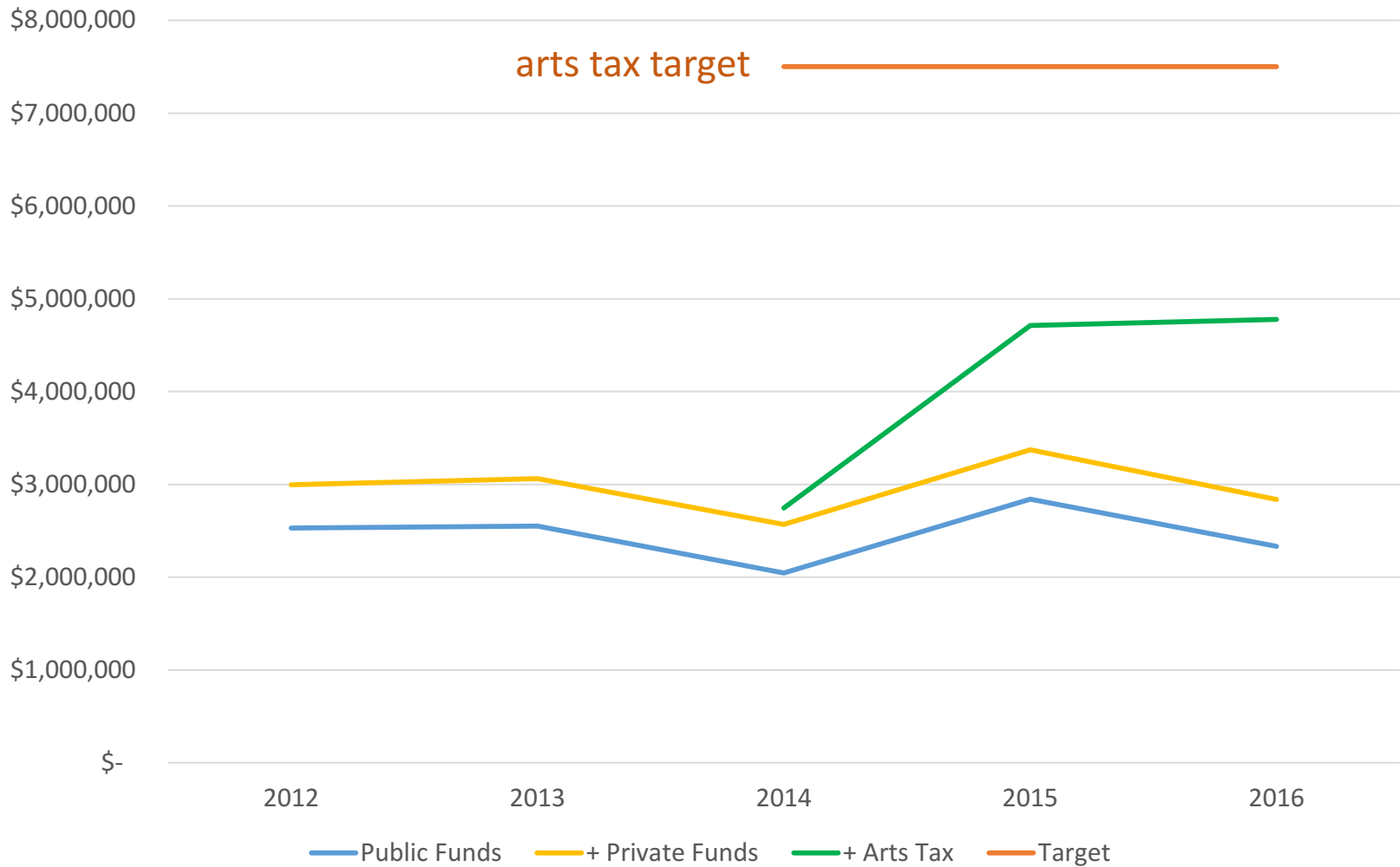
Funding for RACC grants, 2011-2016



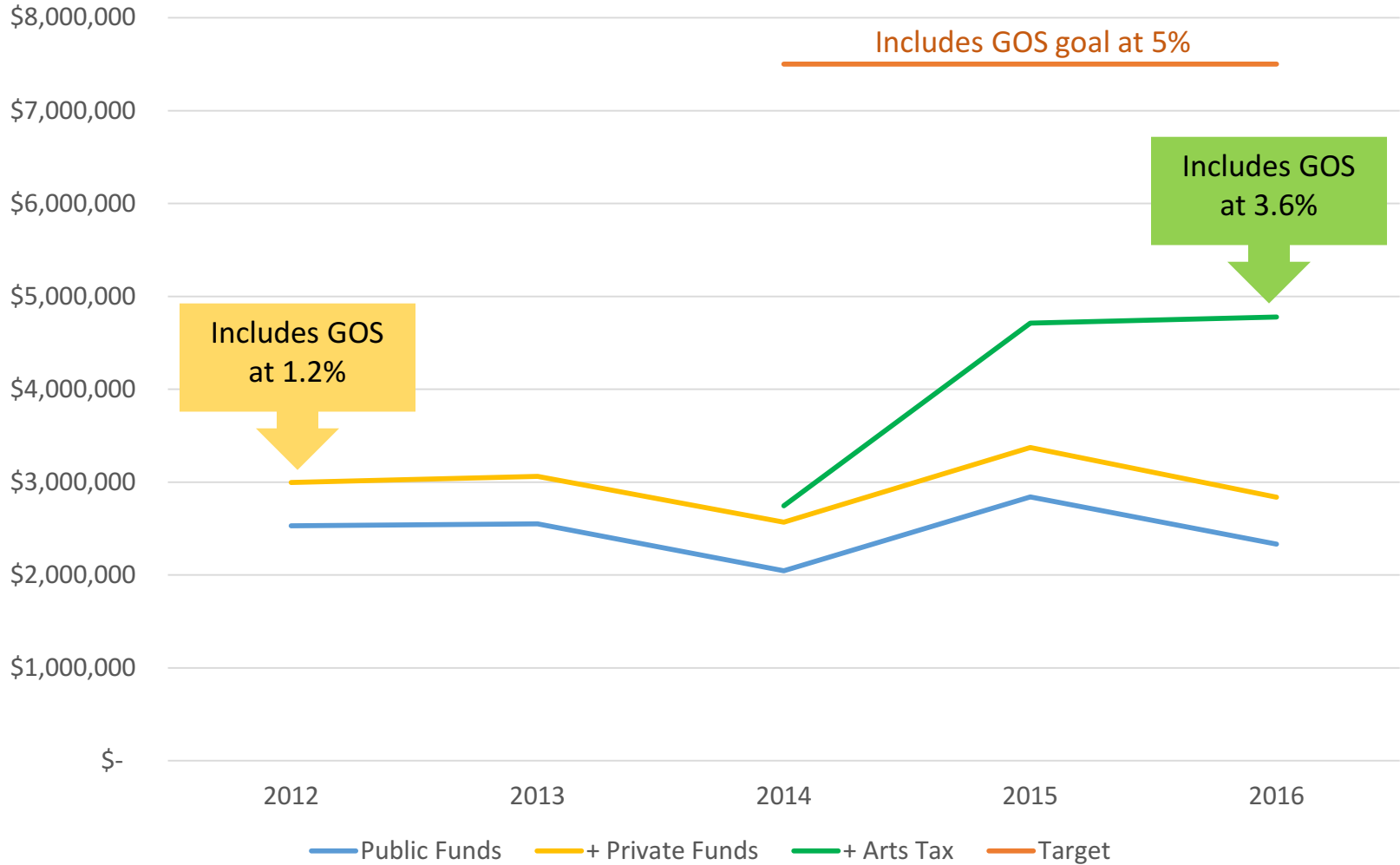
Funding for RACC grants, 2011-2016



Funding for RACC grants, 2011-2016



Funding for RACC grants, 2011-2016



UBA
I CARRY YOU WITH

PURE EMOTION
INSIDE ME



White Bird





Boom Arts



Colored Pencils



Grateful Crane Ensemble

Our Class



Rogue Pack

Darrell Grant

Andrew Proctor

Luann Algoso

Mike Golub



the
PARTNERSHIP
movement







Chairman
and C





all_in
13 minutes ago
Mickey wins Small Business Champion Award! #morelink #artcreates #awesomespeech

know your city
8 minutes ago
Celebrating the broad business support for the arts at @R.A.C.C Arts Breakfast of Champions. #ArtCreates
<https://t.co/fr2H1cZTP1>

Joe Durr
8 minutes ago
#artcreates in Portland!
<https://t.co/bWcy9jP4g0>

lundindragon
1 minute ago
@amywpdx #artcreates

kycpdx
9 minutes ago
Celebrating the broad business support for the arts at @R.A.C.C Arts Breakfast of Champions. #ArtCreates



Sinead Kimbrell
14 minutes ago
Celebrating business and the arts. #ArtCreates #artcreates #artchampions
<https://t.co/eMSVM4c5B>

OR Cultural Trust
26 minutes ago
#Artcreates Cultural Trust honored for @WorkforArt support! Thanks Vice Chair Mike Golubi
<https://t.co/swq2UZsjvT>



Tricia Fairman
4 minutes ago
#artcreates philanthropy C @breakfastofch
<https://t.co/GskOLIV1JP>



Mandy Morgan
1 minute ago
Great day to celebrate the arts! #artcreates
<https://t.co/h2chvgTKnV>

amohmalley
37 minutes ago
Arts Breakfast of Champions

Maureen Porter





WorkforArt

BATTLE



BANDS



ZGF Architects







En
Taku







