

188533

working for clean rivers

BES Pump Station System Plan (BES ESEN000019)

Jennifer Belknap Williamson | Principal Engineer | Bureau of Environmental Services

July 19, 2017



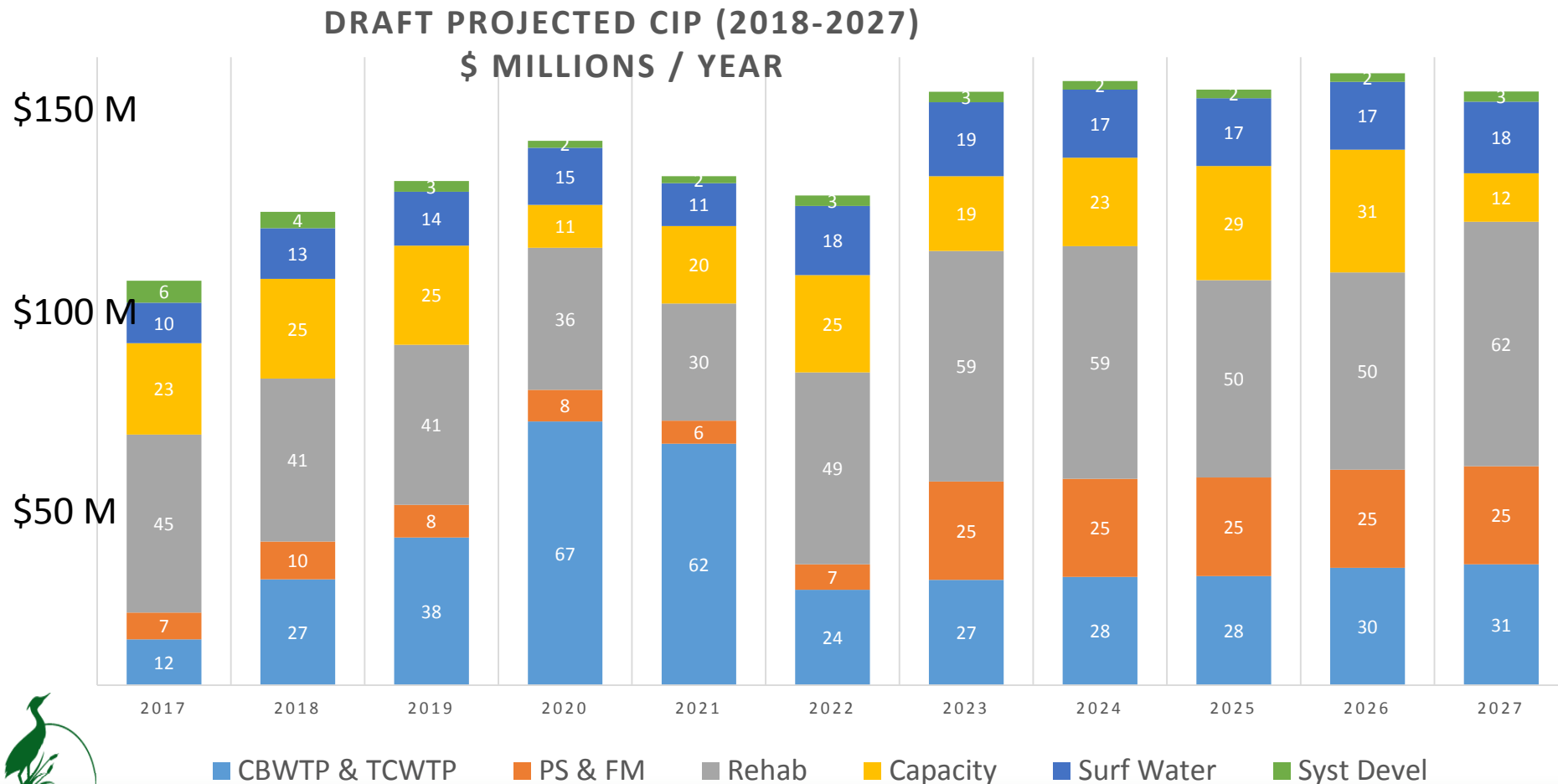
ENVIRONMENTAL SERVICES
CITY OF PORTLAND

NICK FISH, COMMISSIONER
MICHAEL JORDAN, DIRECTOR

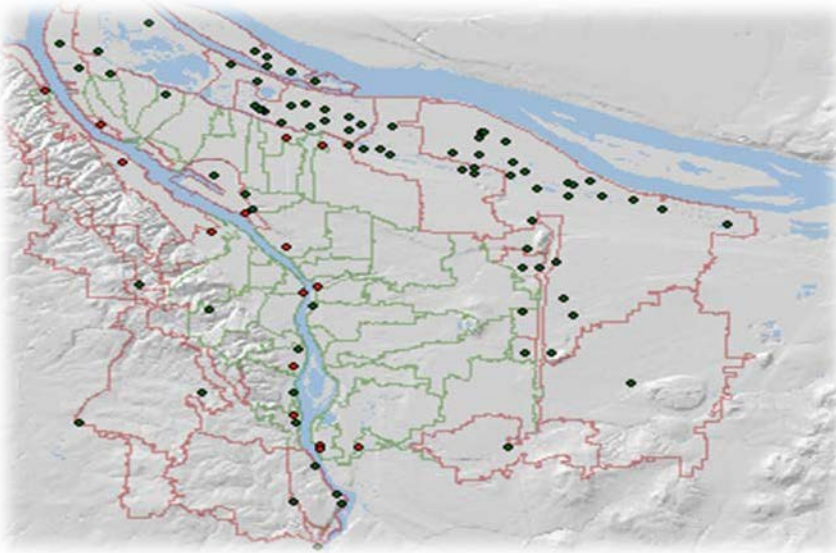


Projected CIP growth to \$155 M/year includes growth in Pump Stations and Force Mains (PS & FM) to put infrastructure reinvestment on sustainable path

188533



99 Pump Stations are critical to avoid flooding, environmental damage



BES Pump Station System Plan - Goals

- Develop and implement comprehensive Asset Management approach for \$1 Billion asset class
- Identify and address risks – condition assessment methodology
- Recommend projects and actions
- Implementation plan – staff training, CIP budget estimates



BES Pump Station System Plan - Scope

1. Create an Asset Registry
2. Define risk criteria
3. Develop a condition assessment methodology
4. Conduct assessments
5. Prioritize actions based on risk
6. Strategy for implementing ongoing assessments and CIP projects



BES Pump Station System Plan - Schedule

BES PSSP Plan Project

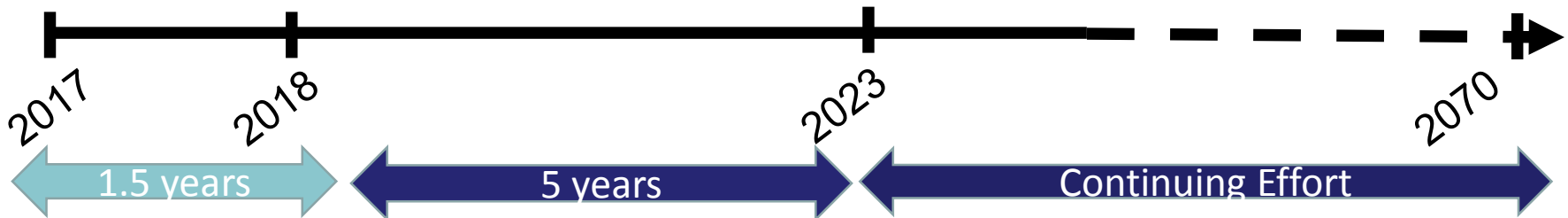
- Create Asset Registry
- Initial Condition and Risk Assessments
- Develop initial CIP's
- Implementation Plan

Initial Implementation

- CIP projects ramp up to sustained level
- Update Risk Valuations & Cost/Benefit Analysis
- Ongoing Condition and Risk Assessments

Ongoing Implementation

- CIP projects at sustained level
- Ongoing Condition and Risk Assessments
- New technologies, new data



Questions



Thank you

