

**City of Portland, Oregon - Bureau of Development Services**1900 SW Fourth Avenue • Portland, Oregon 97201 | 503-823-7300 | www.portlandoregon.gov/bds**Permit Revision Submittal Requirements and Application**

A Permit Revision is required when there are proposed changes to the project after the permit has been issued. This may arise due to discrepancies between the city-approved permit drawings and actual field conditions, or the customer has changed their mind about an aspect of the project. In all cases, a revision to the existing permit must be submitted, reviewed and approved.

Applicants will provide:☒ A copy of this application☒ Three (3) sets of plans that clearly reflect the proposed change(s).

Drawings and calculations must be stamped and signed by the Architect and/or the Engineer of Record, if applicable.

☐ One (1) copy of the original city approved permit

drawings. (NOTE: If your project has an assigned process manager please contact them regarding submittal of the revision).

☐ Two (2) sets of calculations, if applicable☐ Inspector's correction notice, if revision is due to an inspection correction☐ Revision fee (paid at time of submittal)**Contact Information:**Contact name FLANCO-DICKER NW LLC #213737Address 1573 NE 236thCity WOOD VILLAGE State OR Zip Code 97060Phone 503 886 9943 Email DICKERNORTHWESTLLC@GMAIL.COMValue of proposed revision 2500 Issued permit # 17-136368 00Job site address 710 N KILLIPS WORTH, PORTLANDDescription of revision FLIP BATH FIXTURES (ADA BATH), move CIRCULAR TRAP**Fees:**

The Permit Revisions are subject to fees associated with plan review, processing and any increase in project value. Additional fees may apply if adding plumbing fixtures.

The Bureau of Development Services fee schedule is available under the fees tab on the BDS web site at: www.portlandoregon.gov/bds. Fees are updated annually on July 1st.

Helpful Information:

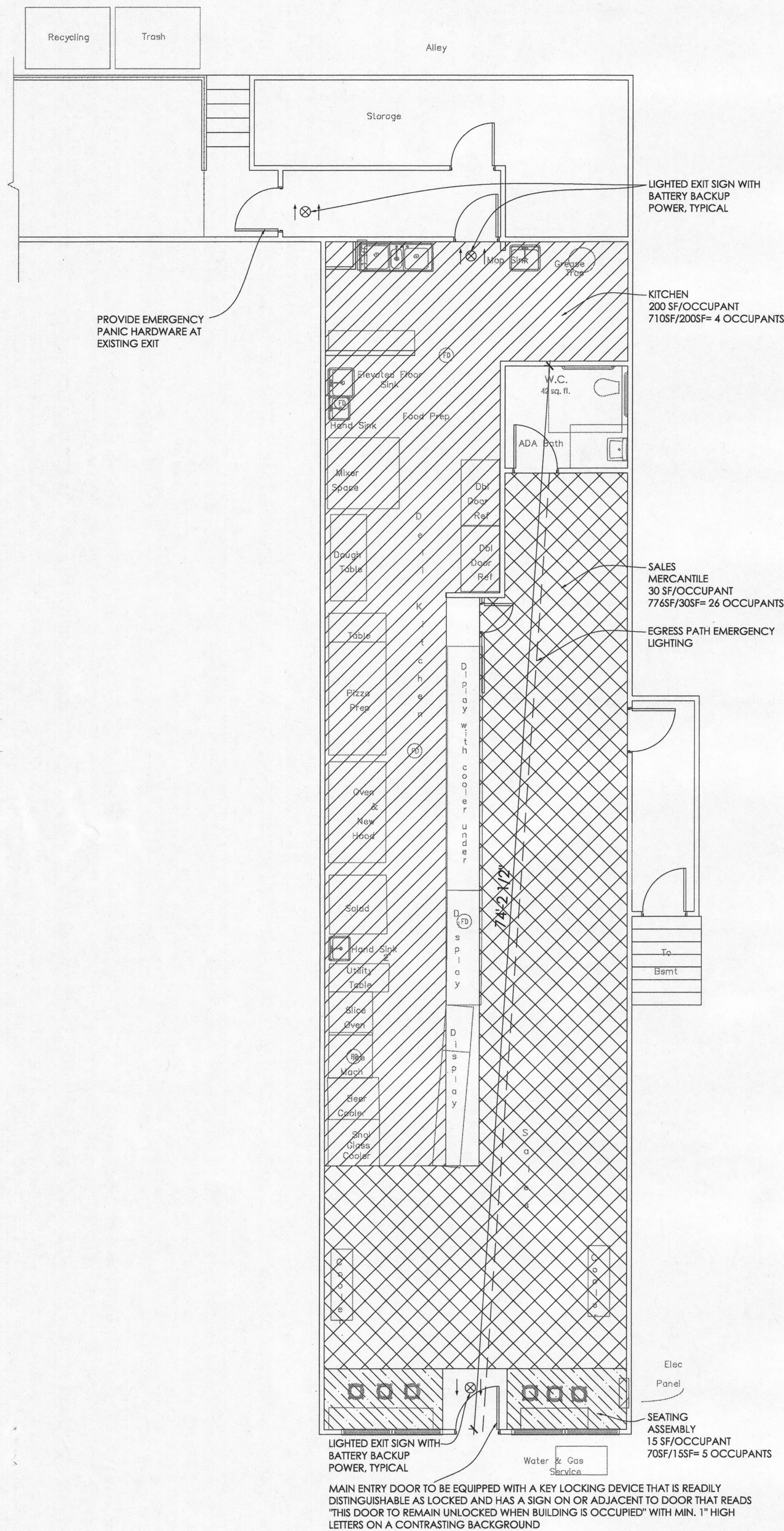
Bureau of Development Services
City of Portland, Oregon
1900 SW 4th Avenue, Portland, OR 97201
www.portlandoregon.gov/bds

Submit your plans in person to:

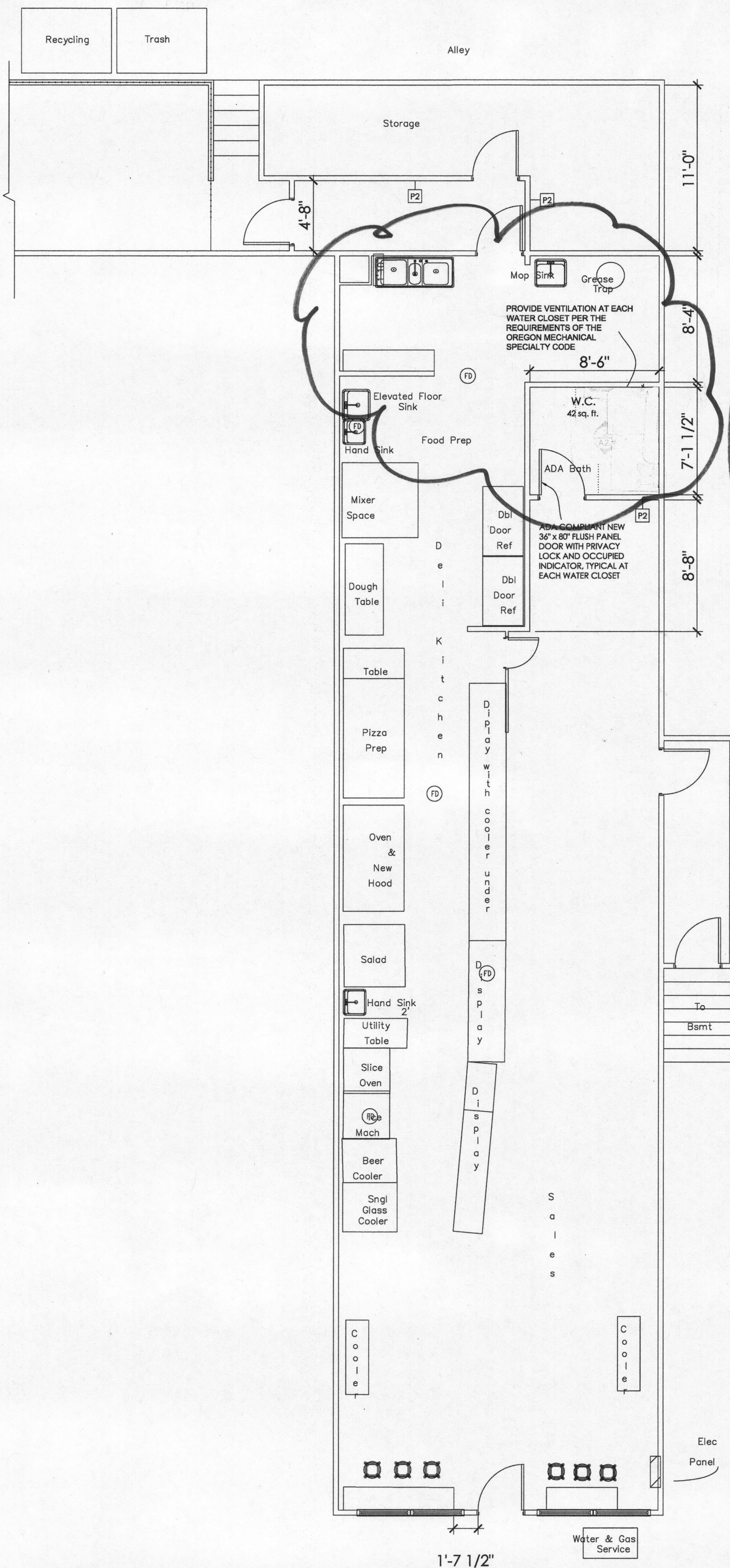
Development Services Center (DSC), First Floor,
For Hours Call 503-823-7310 | Select option 1

Important Telephone Numbers:

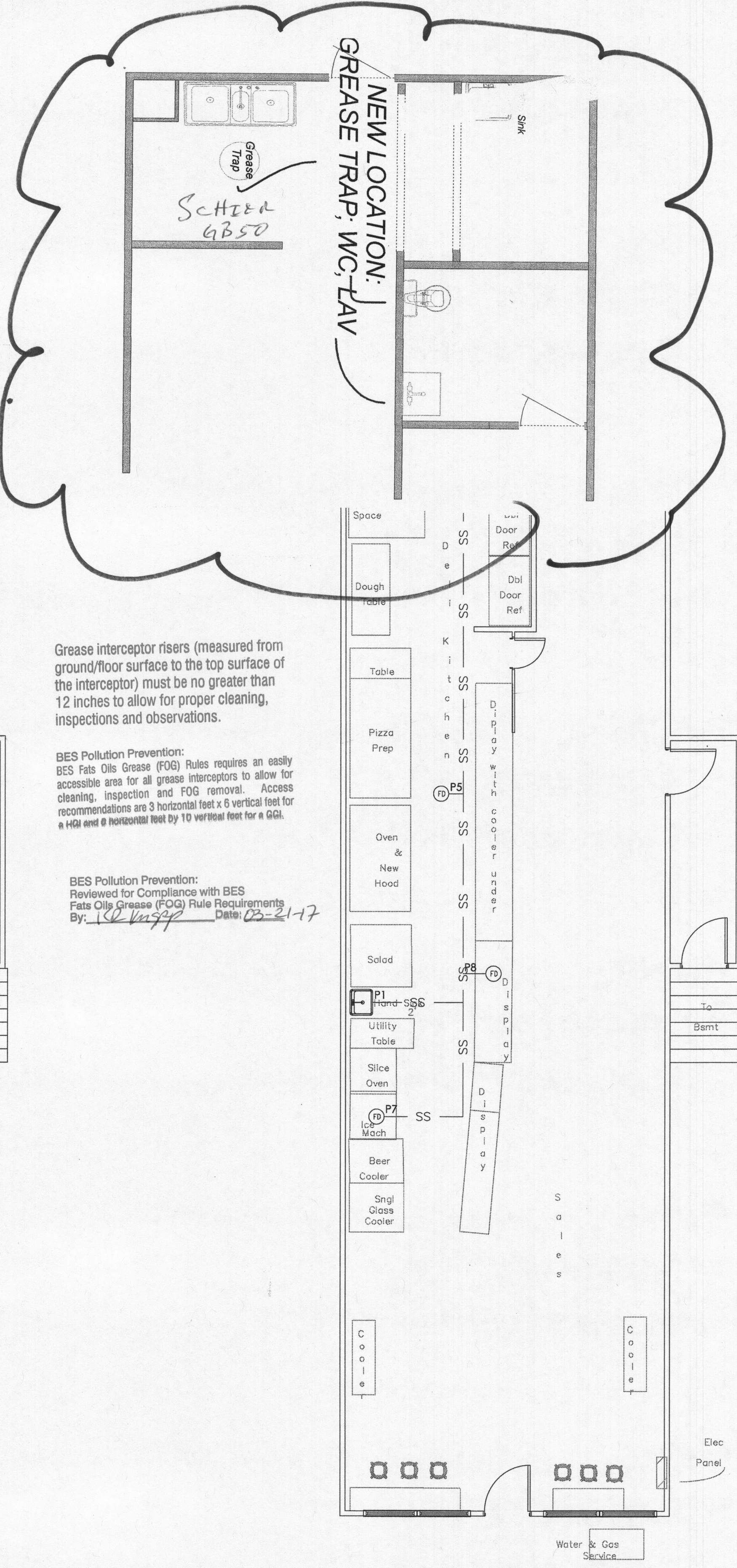
BDS main number503-823-7300
DSC automated information line503-823-7310
Building code information503-823-1456
BDS 24 hour inspection request line503-823-7000
Residential information for
one and two family dwelling503-823-7388
General Permit Processing and
Fee Estimate info503-823-7357
City of Portland TTY503-823-6868



1 LIFE SAFETY PLAN
3/16" = 1'-0"



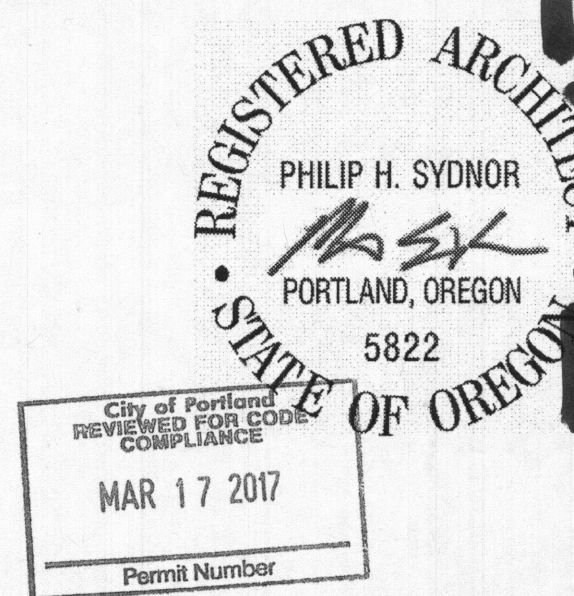
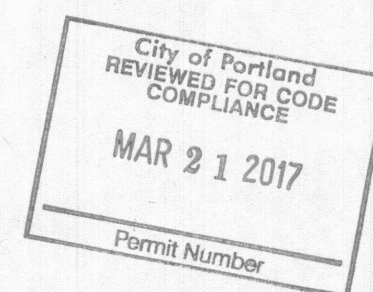
2 PROPOSED PLAN
3/16" = 1'-0"



3 PLUMBING PLAN
3/16" = 1'-0"

GENERAL NOTES

- Contractor to verify all conditions and dimensions before construction. Notify architect of any discrepancies and during construction.
- All work to be performed in strict compliance with local, state and federal codes & ordinances.
- All construction is to comply with the 2010 energy code requirements for climate zone 4C
- Do not scale drawings.
- All dimensions are to face of framing unless otherwise noted.
- Provide blocking & fire stopping to meet all applicable code requirements.
- Seal all construction joints, plumbing and electrical penetrations to ensure maximum air tightness and insulation.
- Coordinate with architect for HVAC equipment, duct, and vent locations.
- Provide smoke and carbon monoxide detectors as required by code.
- Mechanical, Plumbing, Electrical and Communications systems are Design/Build in Total. Design/Build contractors to directly coordinate with the city for all permits.



FLOOR PLANS

Permit Set
March 17 2017
710 N. Killingsworth St.
Portland, Oregon, 97217

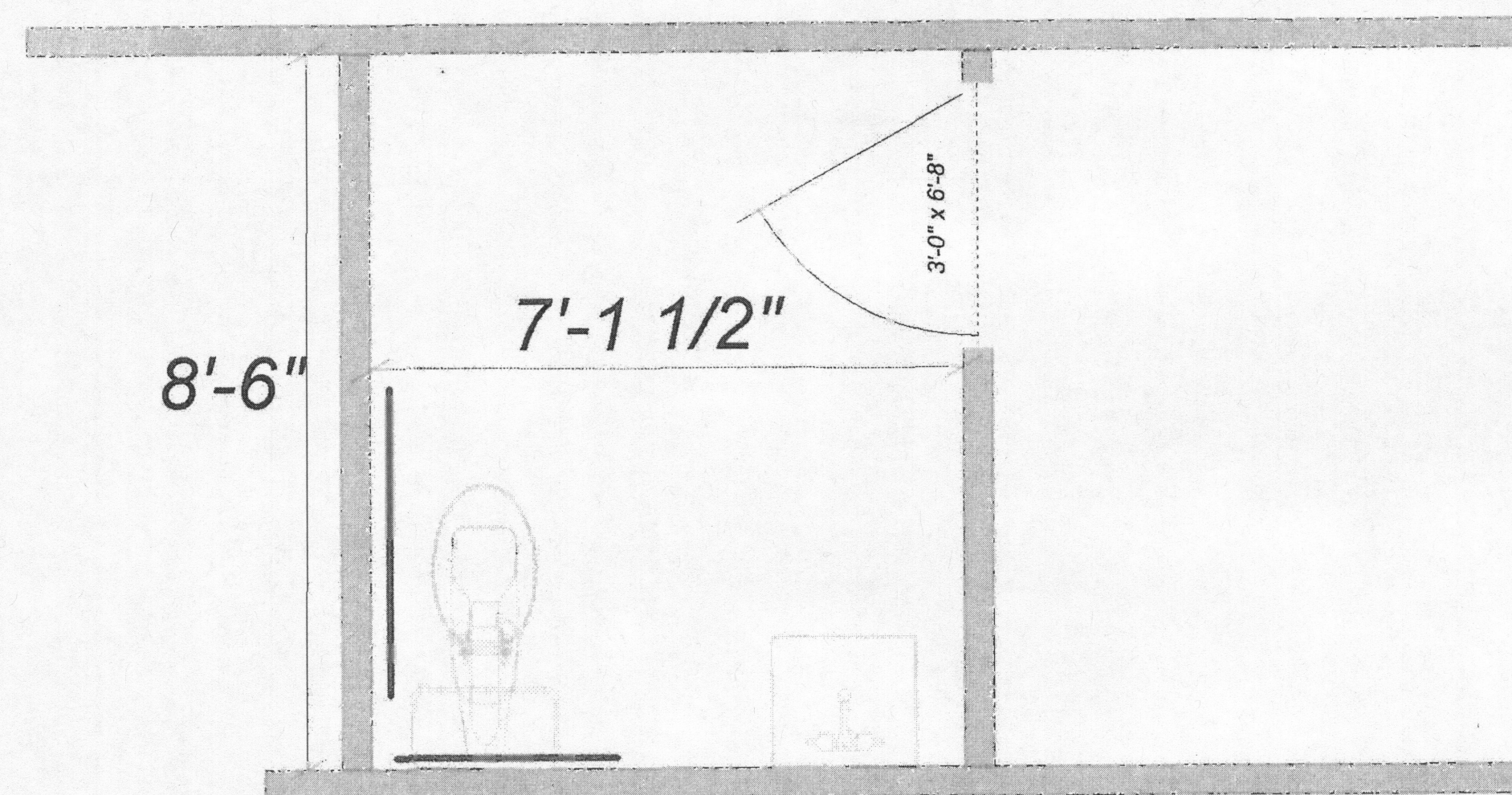
A1.0

INTEGRATE
ARCHITECTURE & PLANNING

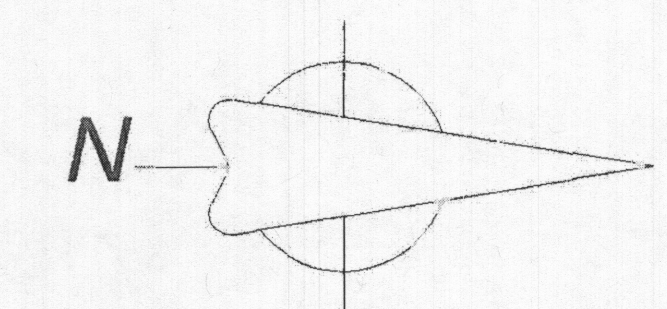
www.integratearch.com
© Integrate Architecture & Planning, p.c.

3/21/17
Rev 1
PLATE 1/2
REV 0
REV 1
REV 2
REV 3
REV 4
REV 5
REV 6
REV 7
REV 8
REV 9
REV 10
REV 11
REV 12
REV 13
REV 14
REV 15
REV 16
REV 17
REV 18
REV 19
REV 20
REV 21
REV 22
REV 23
REV 24
REV 25
REV 26
REV 27
REV 28
REV 29
REV 30
REV 31
REV 32
REV 33
REV 34
REV 35
REV 36
REV 37
REV 38
REV 39
REV 40
REV 41
REV 42
REV 43
REV 44
REV 45
REV 46
REV 47
REV 48
REV 49
REV 50
REV 51
REV 52
REV 53
REV 54
REV 55
REV 56
REV 57
REV 58
REV 59
REV 60
REV 61
REV 62
REV 63
REV 64
REV 65
REV 66
REV 67
REV 68
REV 69
REV 70
REV 71
REV 72
REV 73
REV 74
REV 75
REV 76
REV 77
REV 78
REV 79
REV 80
REV 81
REV 82
REV 83
REV 84
REV 85
REV 86
REV 87
REV 88
REV 89
REV 90
REV 91
REV 92
REV 93
REV 94
REV 95
REV 96
REV 97
REV 98
REV 99
REV 100

ADA BATH



ATLAS DELI & MARKET
710 NE Killingsworth
Portland, Or



ATLAS DELI & MARKET
710 NE Killingsworth
Portland, Or

ADA Bath &
Grease trap location

3/21/17
REV. 1
PLATE 2/2

