

CENTRALCITY 2035

Decision Packet Q: Bonus and Transfer Amendments

PSC Work Session 5 – 02/14/2017



Bureau of Planning and Sustainability

Innovation. Collaboration. Practical Solutions.

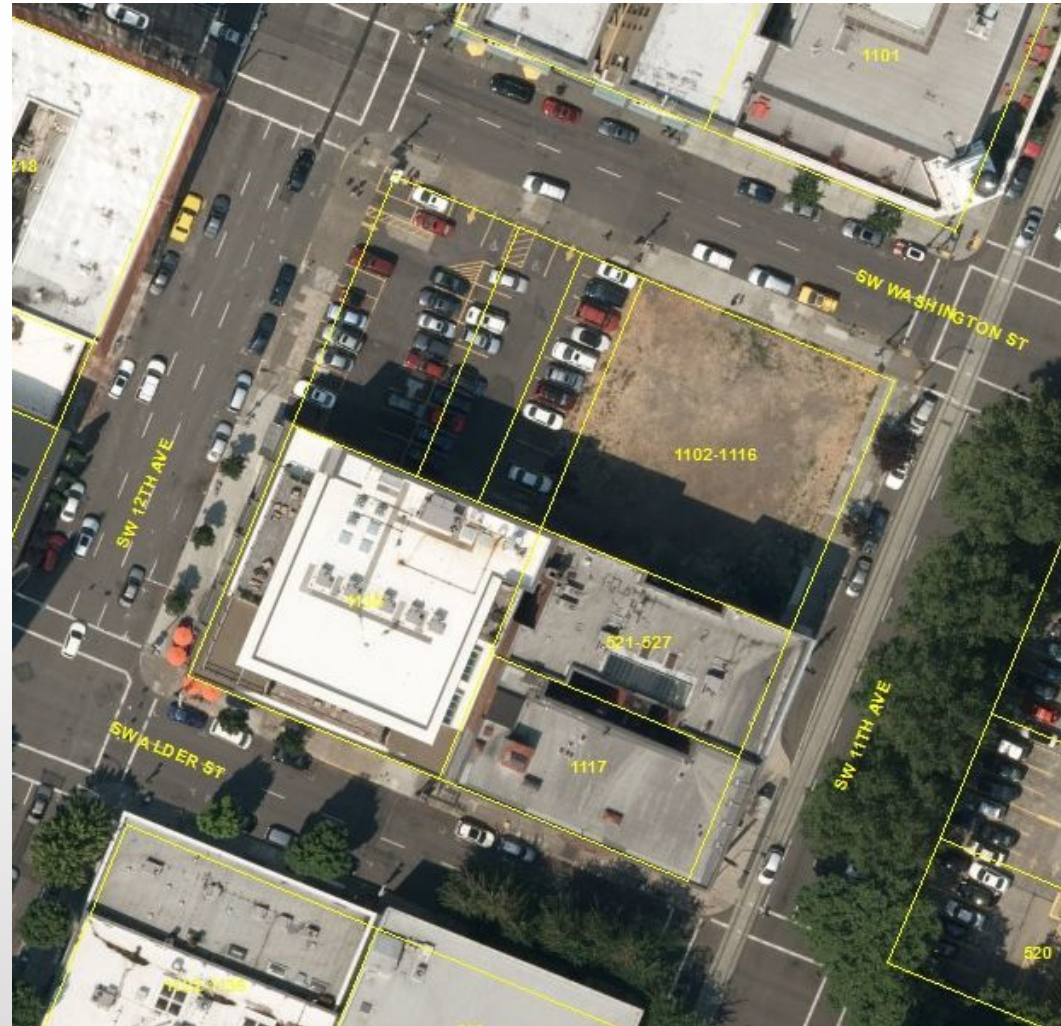
City of Portland, Oregon
Charis Webb, Mayor • Jason Anderson, Director



Transfer of FAR from a surface parking lot

Current proposal:

Sites entirely used for surface parking are prohibited from being sending sites for FAR.



Transfer of FAR from a surface parking lot

Another approach:

Sites with surface parking are prohibited from being sending sites for FAR.



CENTRALCITY 2035

Decision Packet I: Miscellaneous Code

PSC Work Session 5 – 02/14/2017



Bureau of Planning and Sustainability
Innovation. Collaboration. Practical Solutions.

City of Portland, Oregon
Charis Webb, Mayor • Jason Anderson, Director



Ground floor windows/Ground floor active use

- Expanding the list of items that do not qualify as active uses :
 - Display windows
 - Bike parking
 - Utility/mechanical rooms

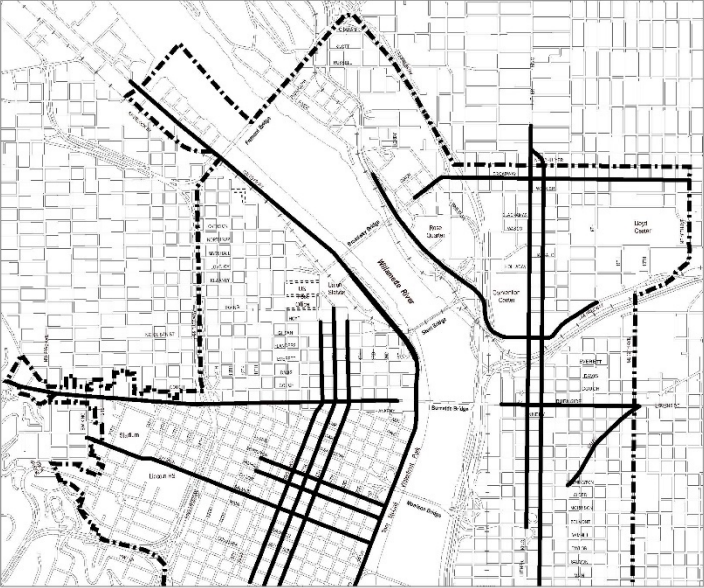




Proposed Ground Floor Windows

Map 1 of 2

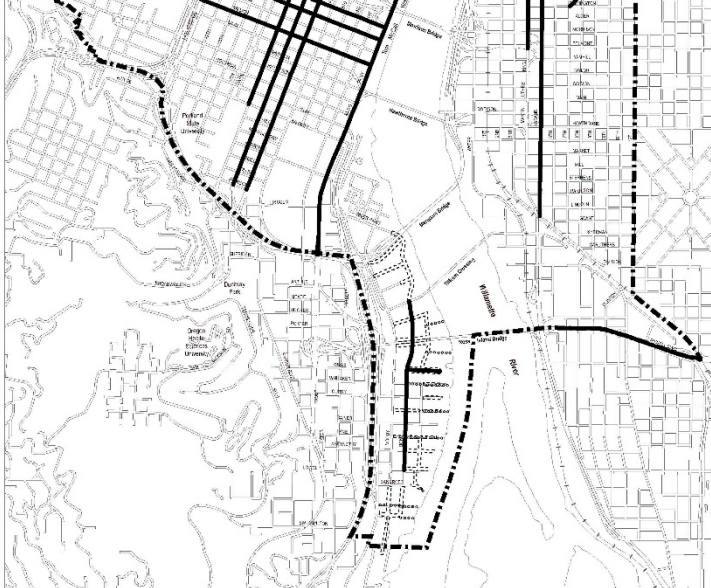
Map Revised Xxxx X, 201X



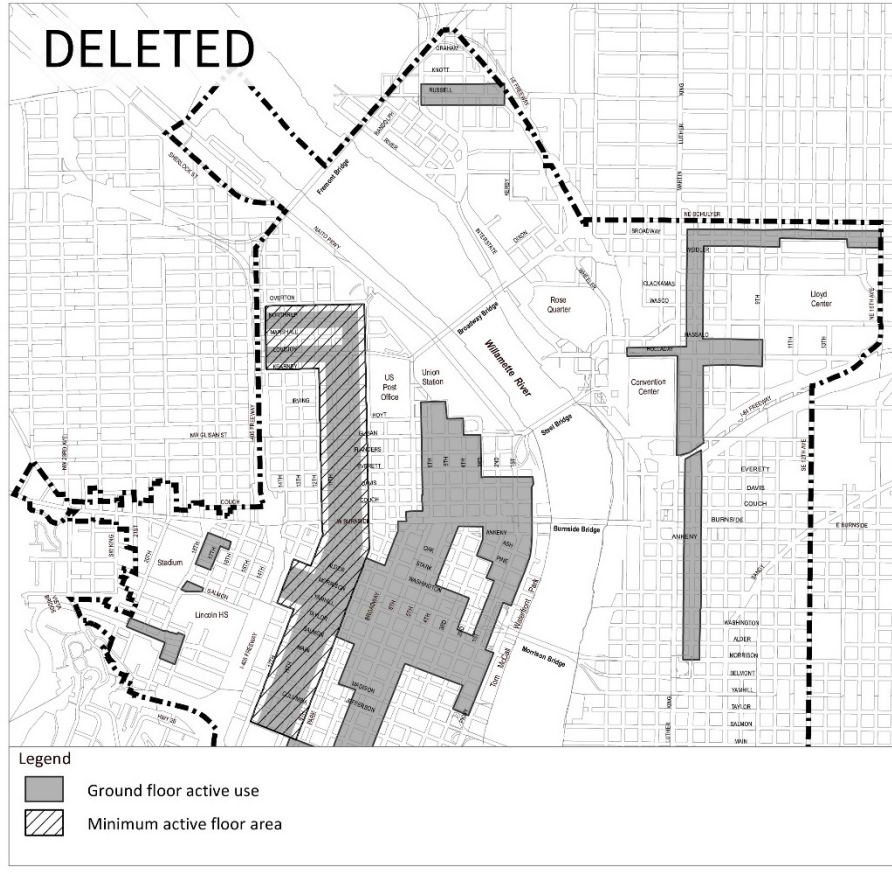
- Legend
- Central City Plan District boundary
 - 60% ground floor window requirement

Map 2 of 2

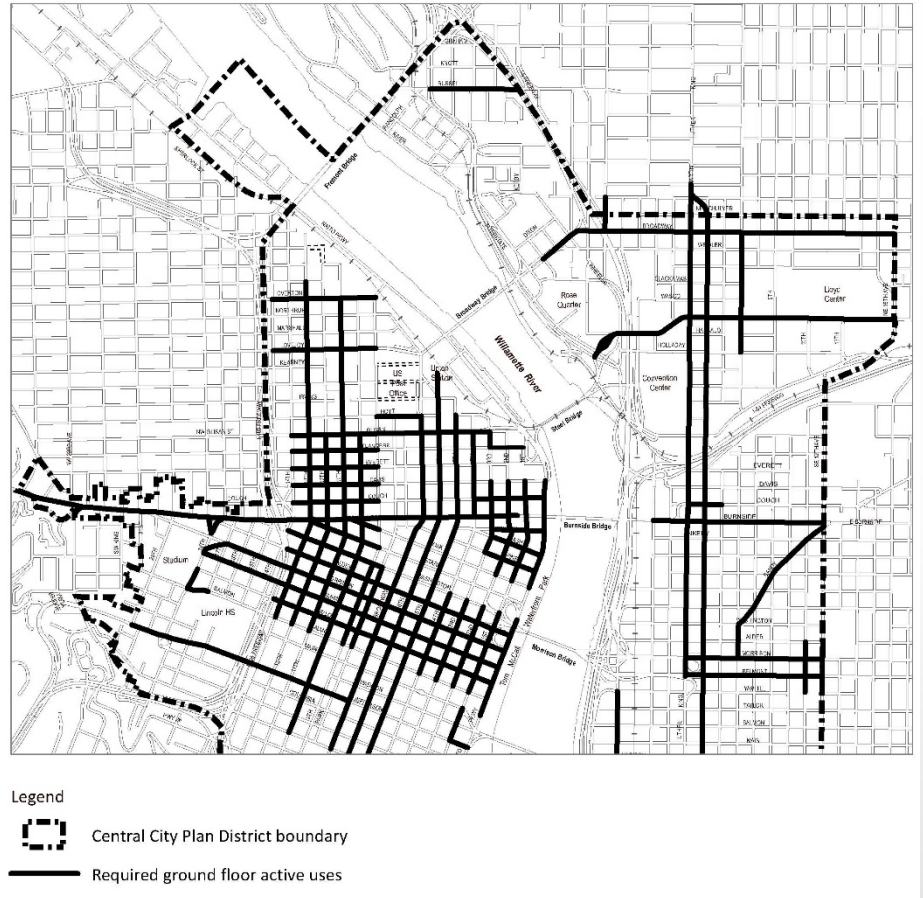
Map Revised Xxxx X, 201X



- Legend
- Central City Plan District boundary
 - 60% ground floor window requirement

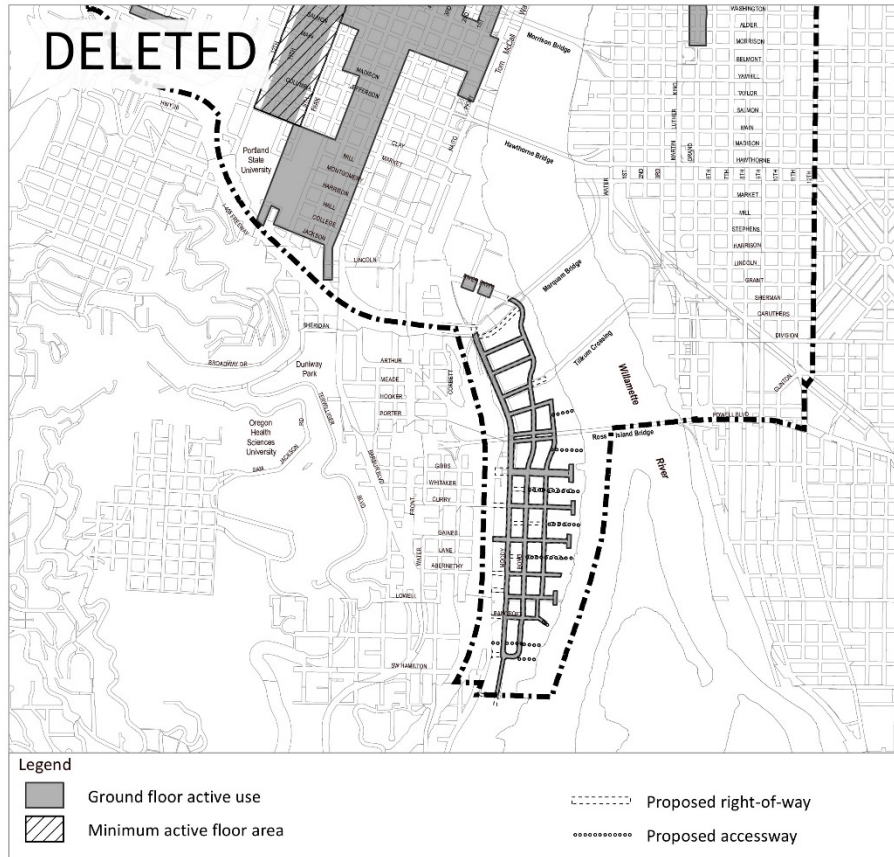


Existing Ground Floor Active Use Map

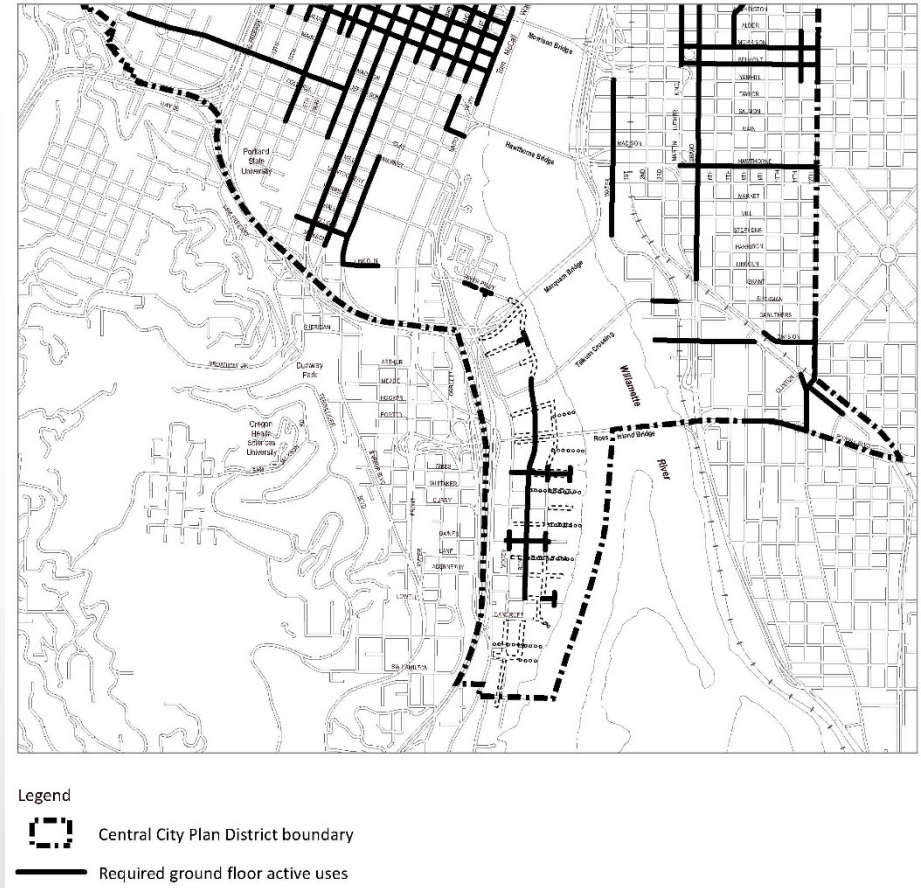


Proposed Ground Floor Active Use Map





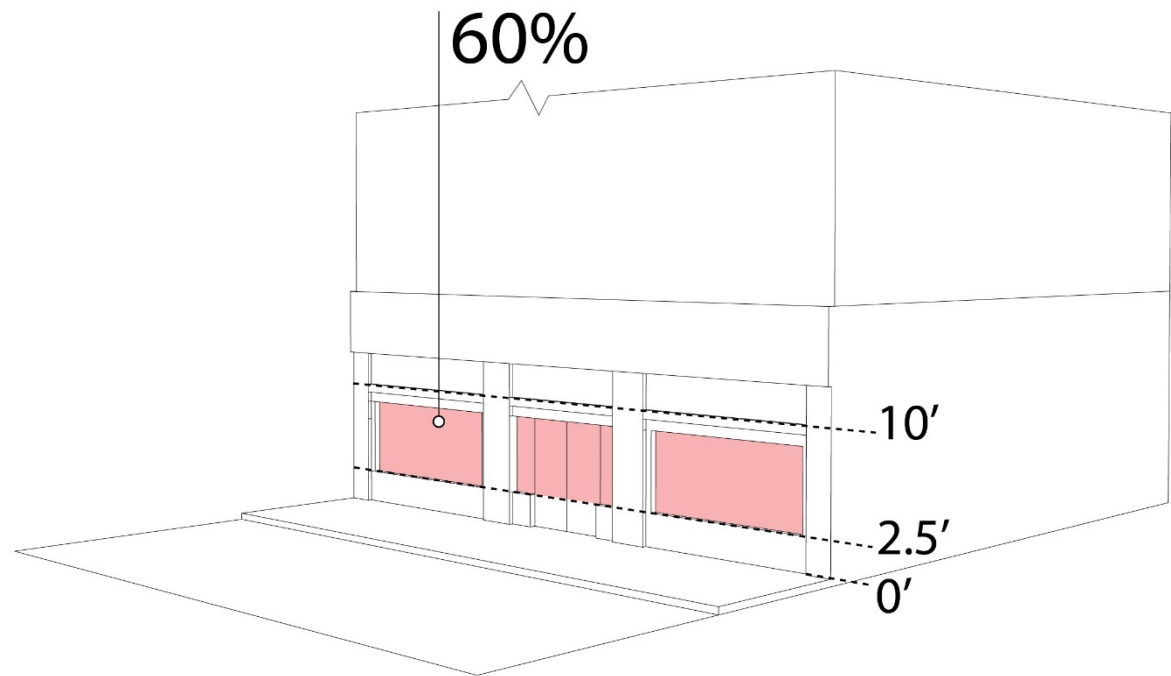
Existing Ground Floor Active Use Map



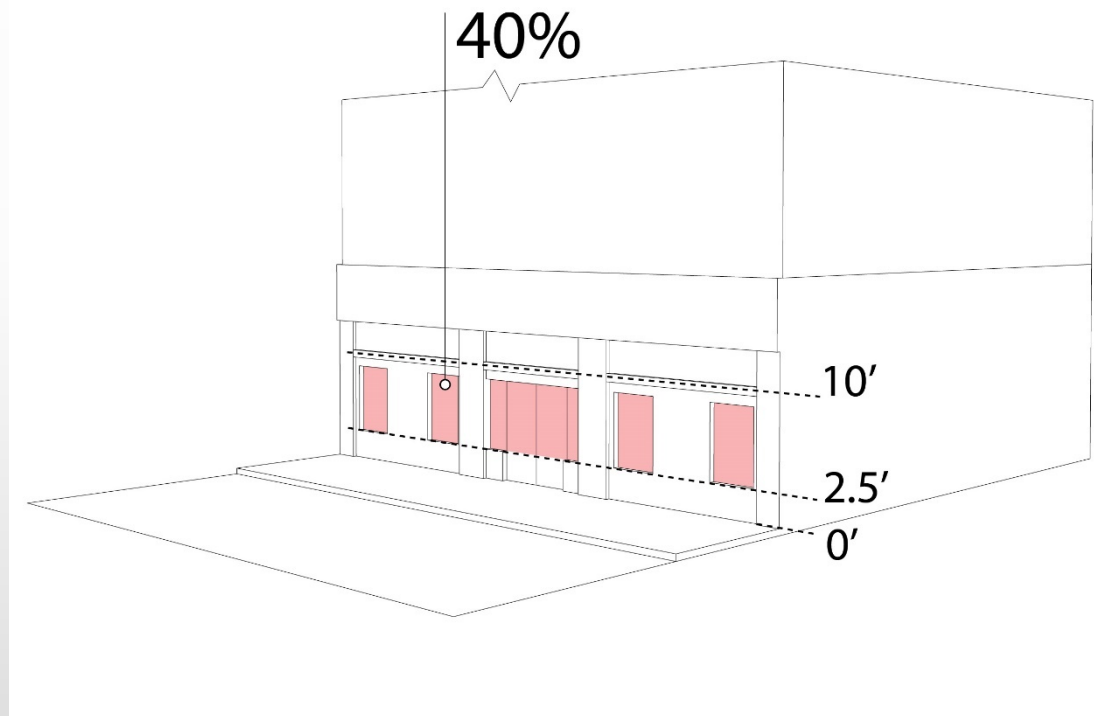
Proposed Ground Floor Active Use Map

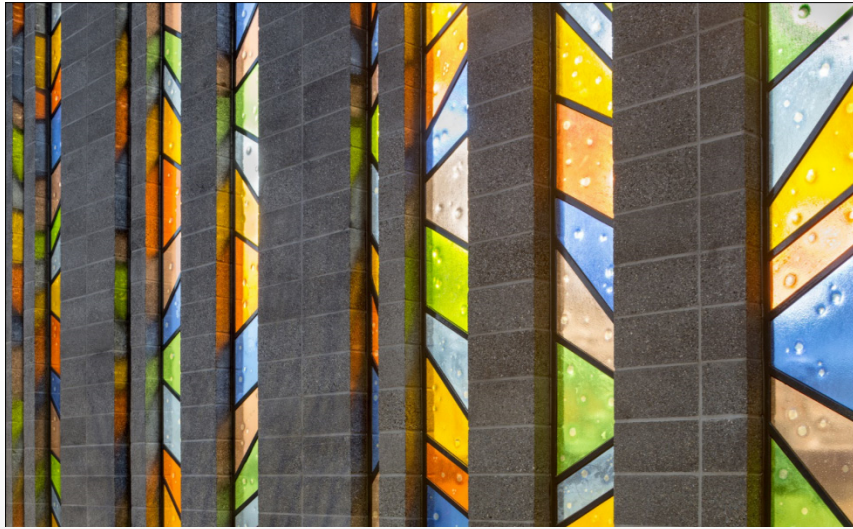


Ground floor windows at 60%



Ground floor windows at 40%







Google earth



Bureau of Planning and Sustainability
Innovation. Collaboration. Practical Solutions.





Google.com



Bureau of Planning and Sustainability
Innovation. Collaboration. Practical Solutions.





Google.com



Bureau of Planning and Sustainability
Innovation. Collaboration. Practical Solutions.

