

# CENTRALCITY 2035

## Packet N: Tree Canopy

PSC Work Session 3 – 1/10/2017



**Bureau of Planning and Sustainability**  
Innovation. Collaboration. Practical Solutions.

*City of Portland, Oregon*  
Charlie Hales, Mayor • Susan Anderson, Director



# Overview

Brief review of tree canopy target methodology & results

Summary of testimony received

A few notes

- No items marked for discussion
- Tree canopy targets adopted by resolution



# Existing Tree Canopy Targets

## Urban Forestry Management Plan (2004)

- 10-15% - commercial/industrial/institutional
- 35-40% - residential
- 30% - parks
- 35% - ROW

## Portland Plan (2012)

- 33% - citywide
- 10-15% - Central City/industrial
- 20-25% - residential

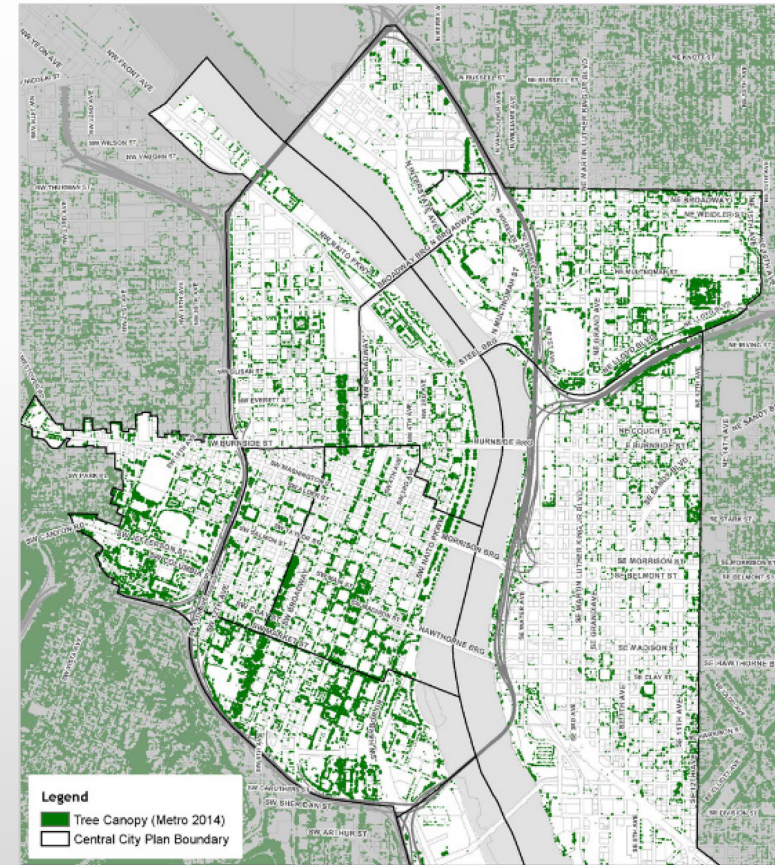


# CC2035 Tree Canopy Targets - Approach

Calculated existing tree canopy using GIS & LiDAR data

Targets based on projected tree canopy resulting from CC2035 policies & programs

Developed collaboratively with PP&R, BES, & PBOT



# CC2035 Tree Canopy Targets - Components

Factored in

- Development of BLI lots
- Street trees
- Streetscape improvements on Green Loop, Boulevards & “Flexible” Streets
- Optional building setbacks
- Master Plan sites
- Parks
- Expanded river setback
- Riverbank enhancements



# CC2035 Tree Canopy Targets

CC Subdistrict	Existing tree canopy	CC2035 Plan Future Tree Canopy Targets (% of area)
		Range
Central Eastside	7.5%	8.7 – 10.3%
Lloyd District	15.9%	15.6 – 18.4%
Lower Albina	6.1%	7.1 – 7.3%
Downtown	20.4%	21.8 – 23.4%
Goose Hollow	21.2%	19.7 – 22.1%
Old Town/Chinatown	16.7%	17.4 – 18.8%
Pearl District	10.4%	20.7 – 23.7%
S Downtown/Univ	24.3%	22.1 – 25.5%
S Waterfront	9.1%	14.2 – 26.7%
West End	15.5%	19.1 – 20.2%
<b>Central City Total</b>	<b>13.5%</b>	<b>15.3 – 18.1%</b>

# CC2035 Tree Canopy - Testimony Highlights

## Process

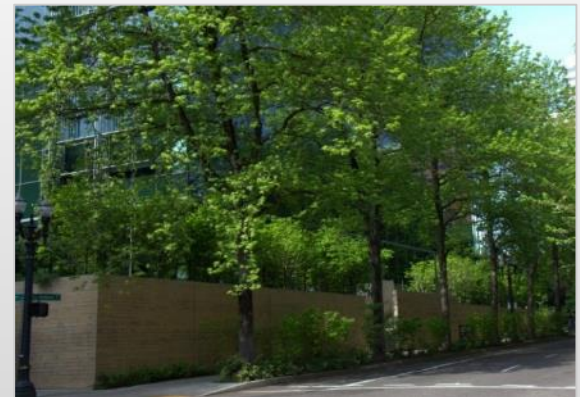
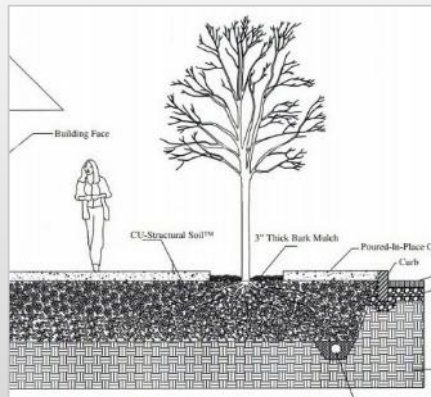
- Monitor progress toward targets
- Utilize alternative environmental health/ecosystem services approach to determine targets



# CC2035 Tree Canopy - Testimony Highlights

## Streetscape

- Require landscaped setbacks & additional soil
- Limit private utility vaults in the ROW
- Prioritize trees in streetscape improvements





# CC2035 Tree Canopy - Testimony Highlights

And stay tuned for...

- Increase tree requirement in Master Plan Code
- Provide bonuses/other incentives for tree preservation

