

CENTRALCITY

2035

Packet K: FAR Requests

PSC Work Session 3 – 1/10/2017



Bureau of Planning and Sustainability
Innovation. Collaboration. Practical Solutions.

City of Portland, Oregon
Charlie Hales, Mayor • Susan Anderson, Director



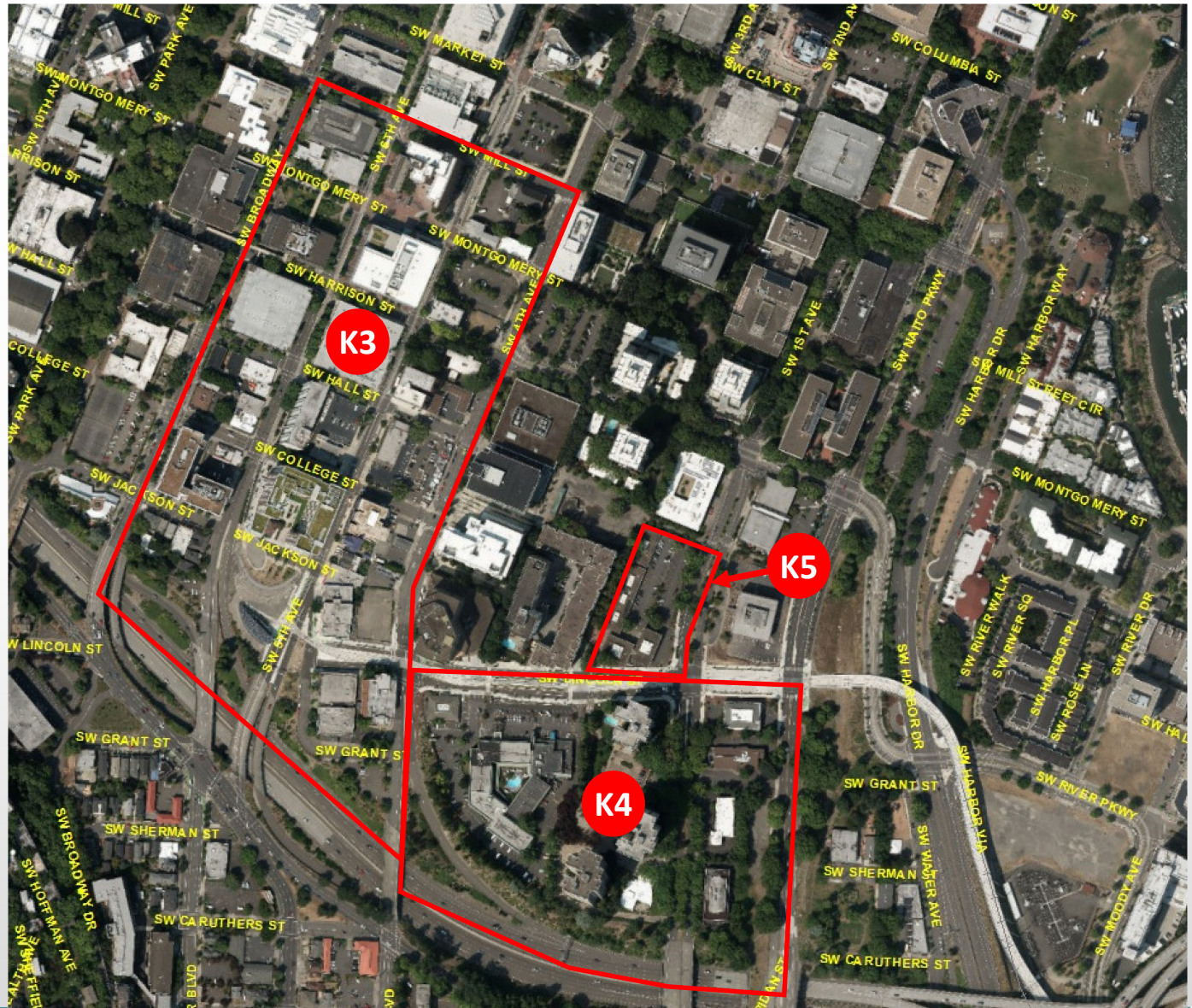
K3-K5: University District/South Downtown

Discussion Items

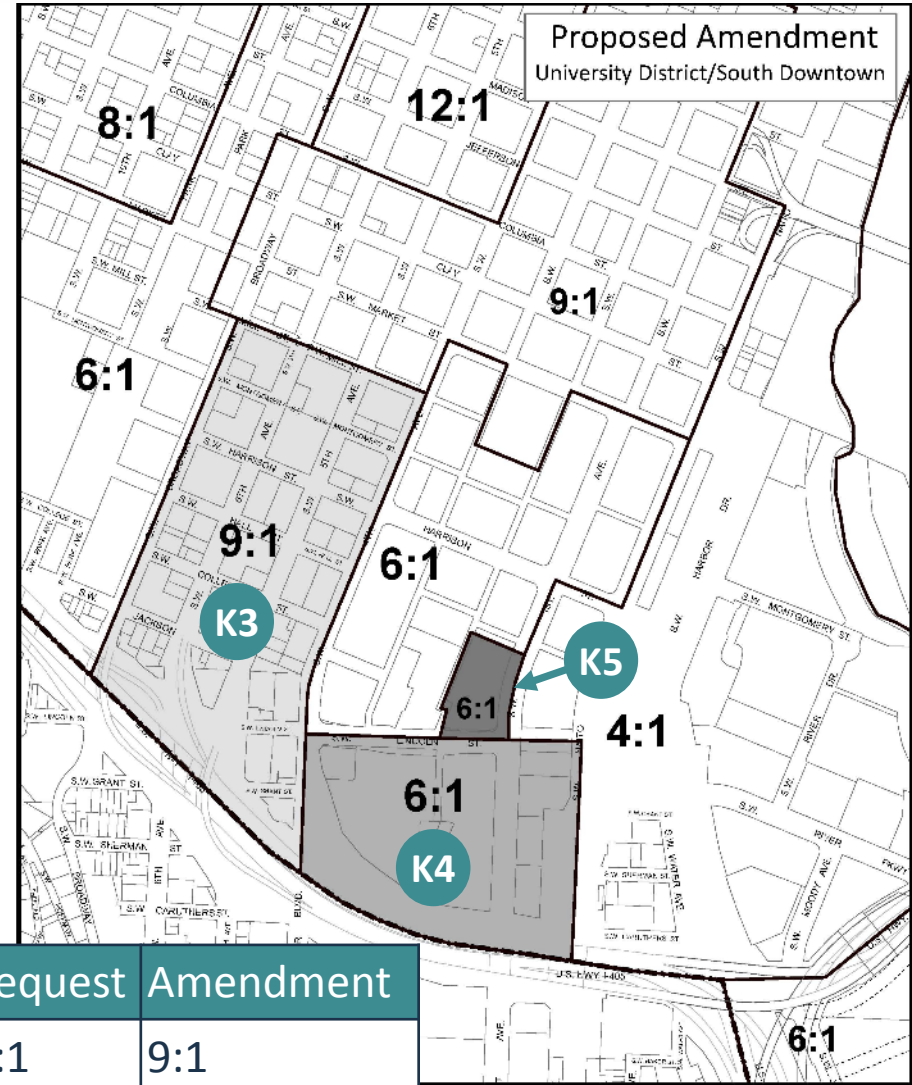
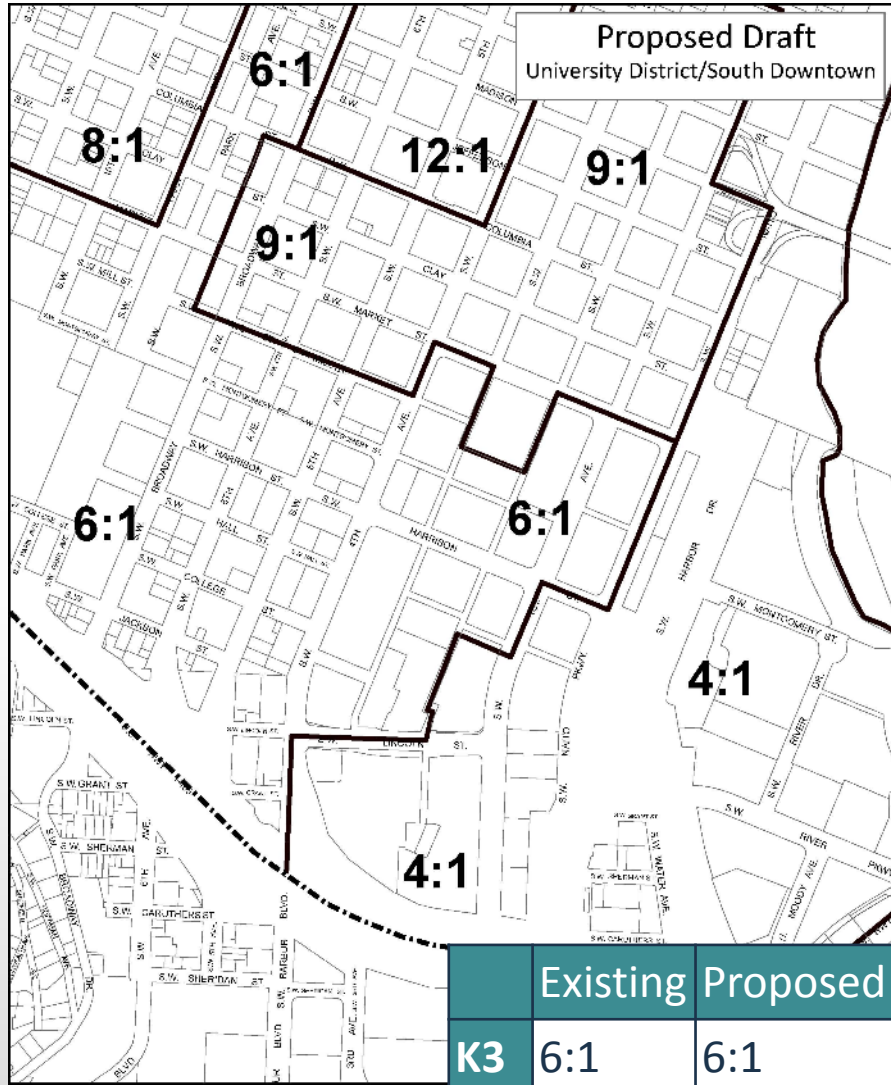
K3: South Transit Mall

K4: Lincoln Station Area

K5: SW 1st and Lincoln



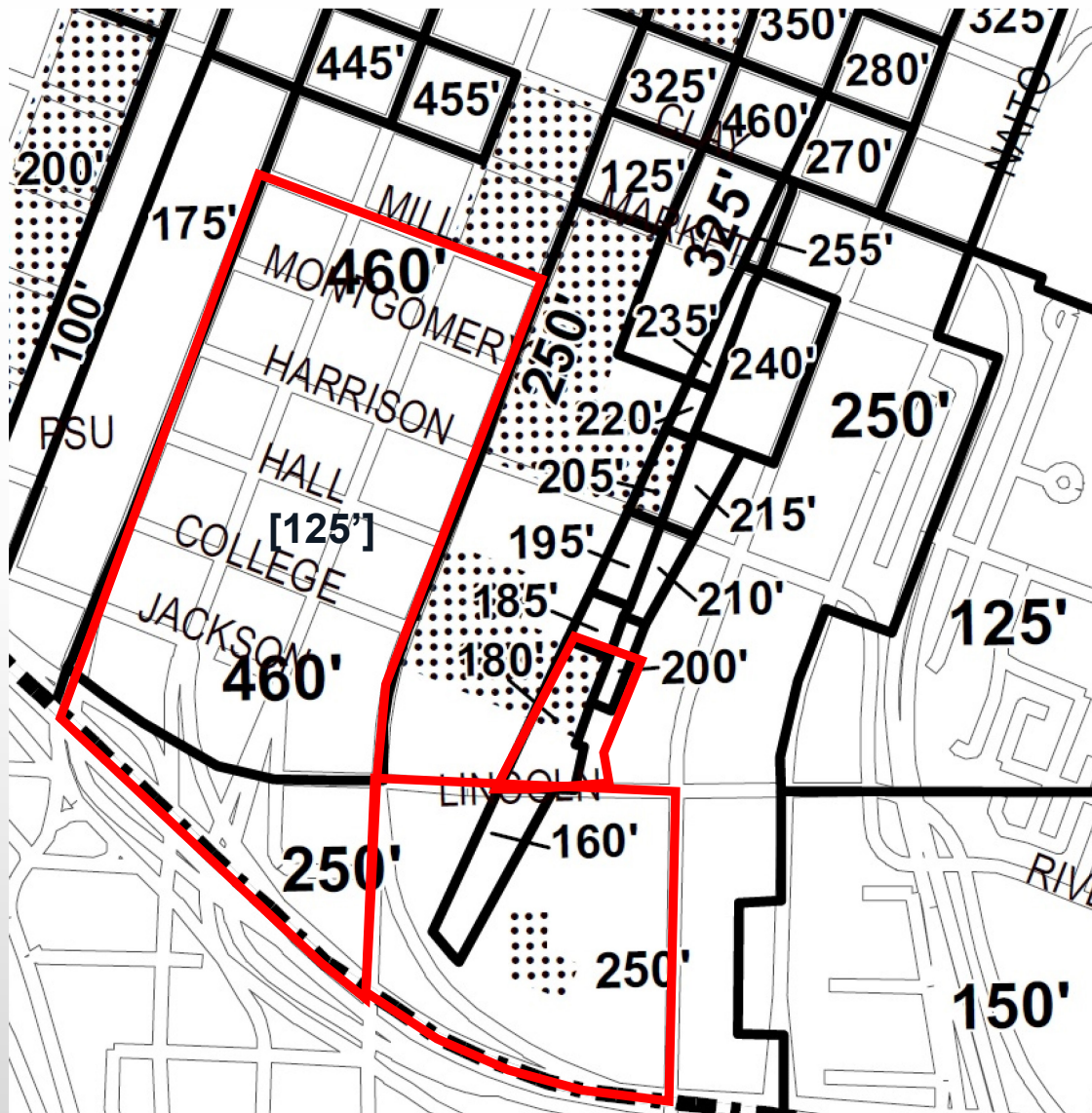
K3-K5: University District/South Downtown



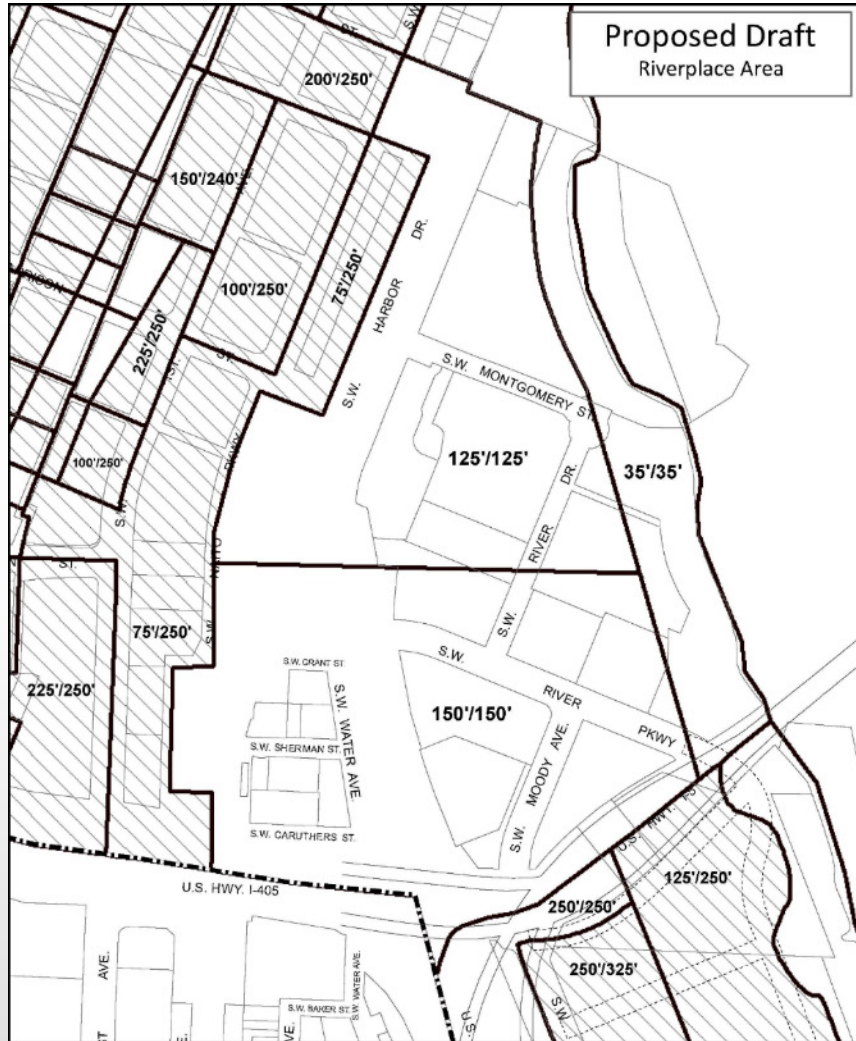
	Existing	Proposed	Request	Amendment
K3	6:1	6:1	9:1	9:1
K4	2:1	4:1	6:1	6:1
K5	2:1	4:1	6:1	6:1



K3-K5: University District/South Downtown—Maximum Heights

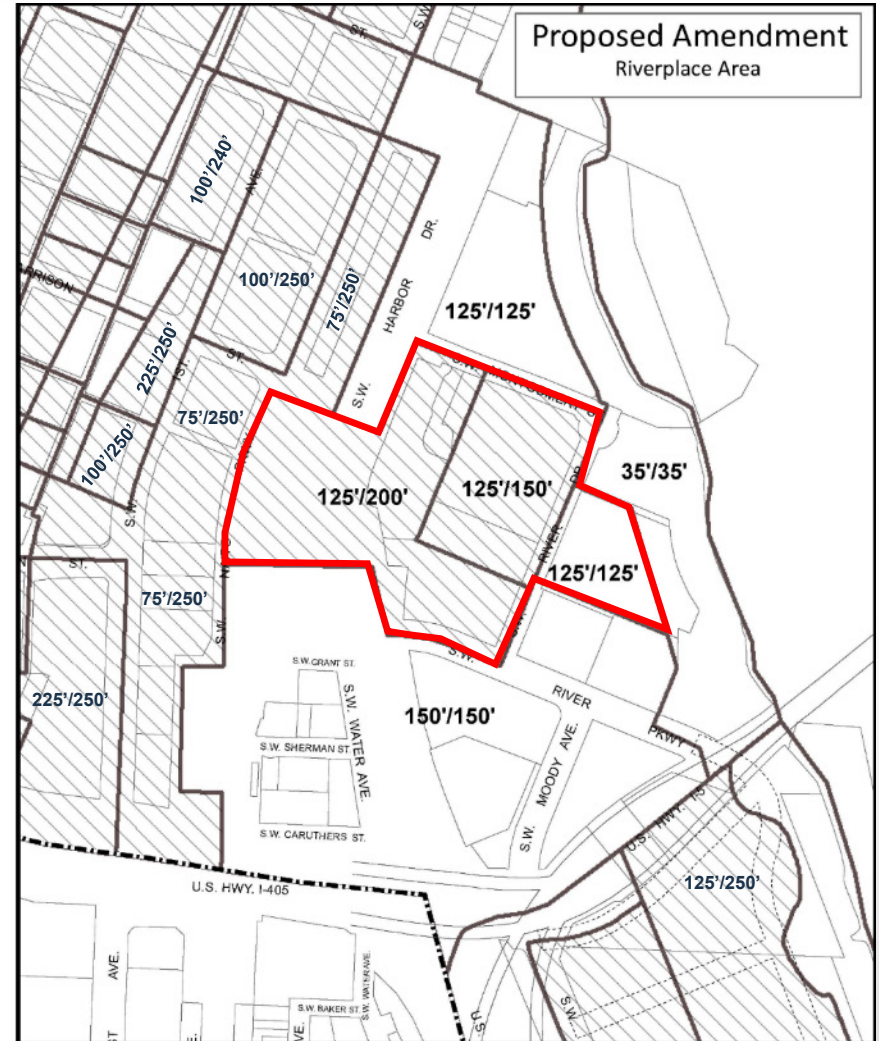


C3: University District/South Downtown



September 14, 2016

- Central City Plan District boundary
- Base/Maximum Heights Boundary
- Area eligible for height increase
- Areas where height is determined by base zone



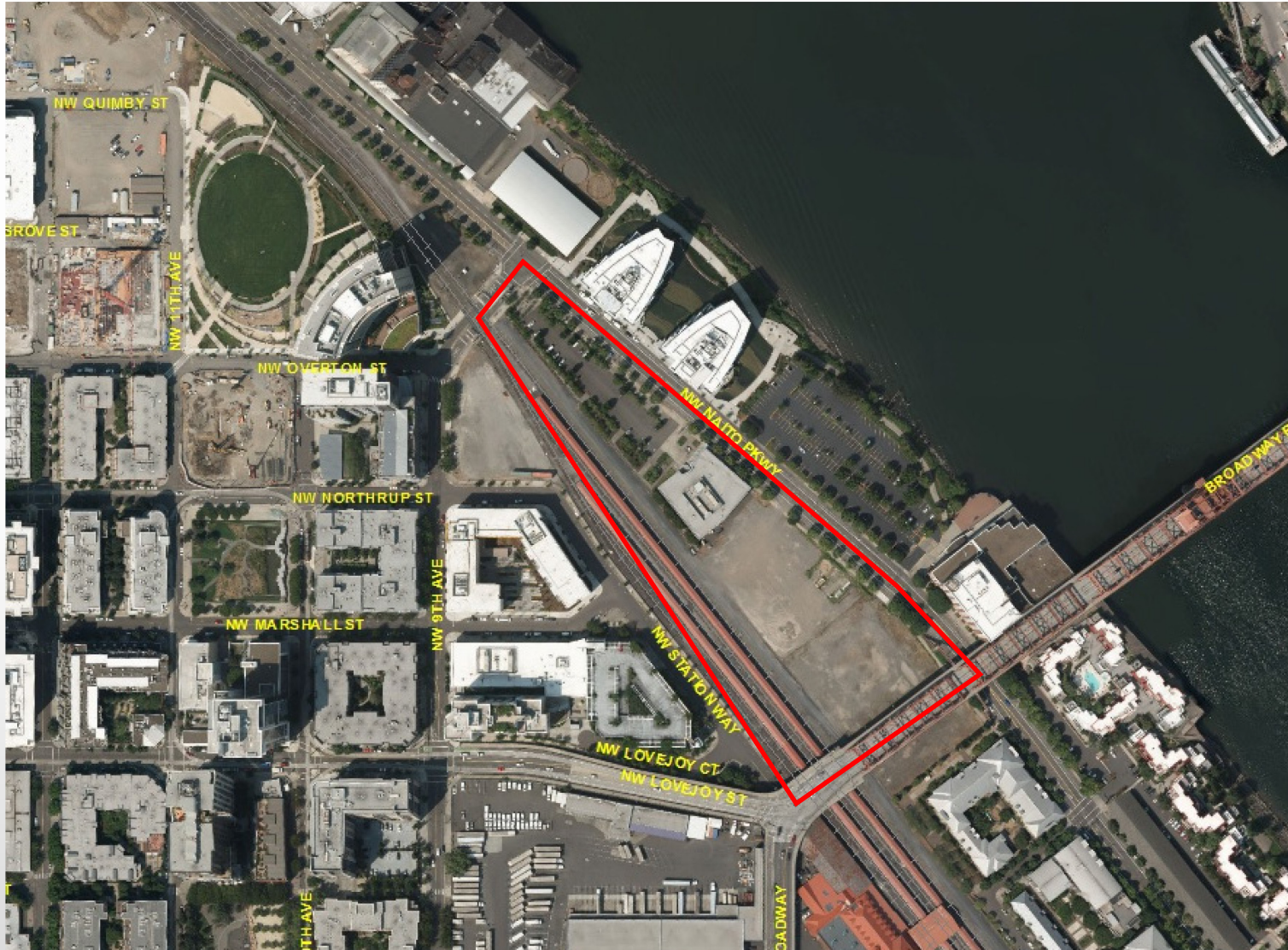
0 200 400
Scale in Feet



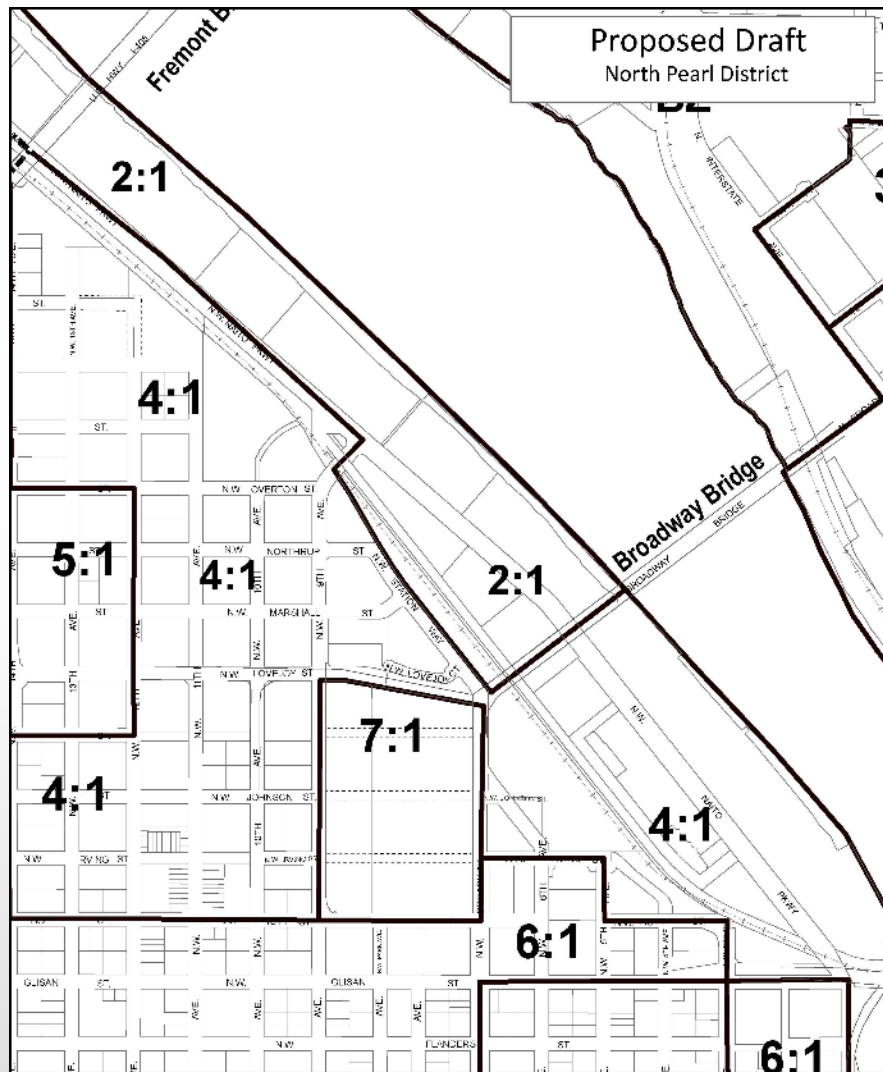
Bureau of Planning and Sustainability
Innovation. Collaboration. Practical Solutions.
City of Portland, Oregon
Charlie Jones, Mayor • Susan Anderson, Director



K6: Pearl District

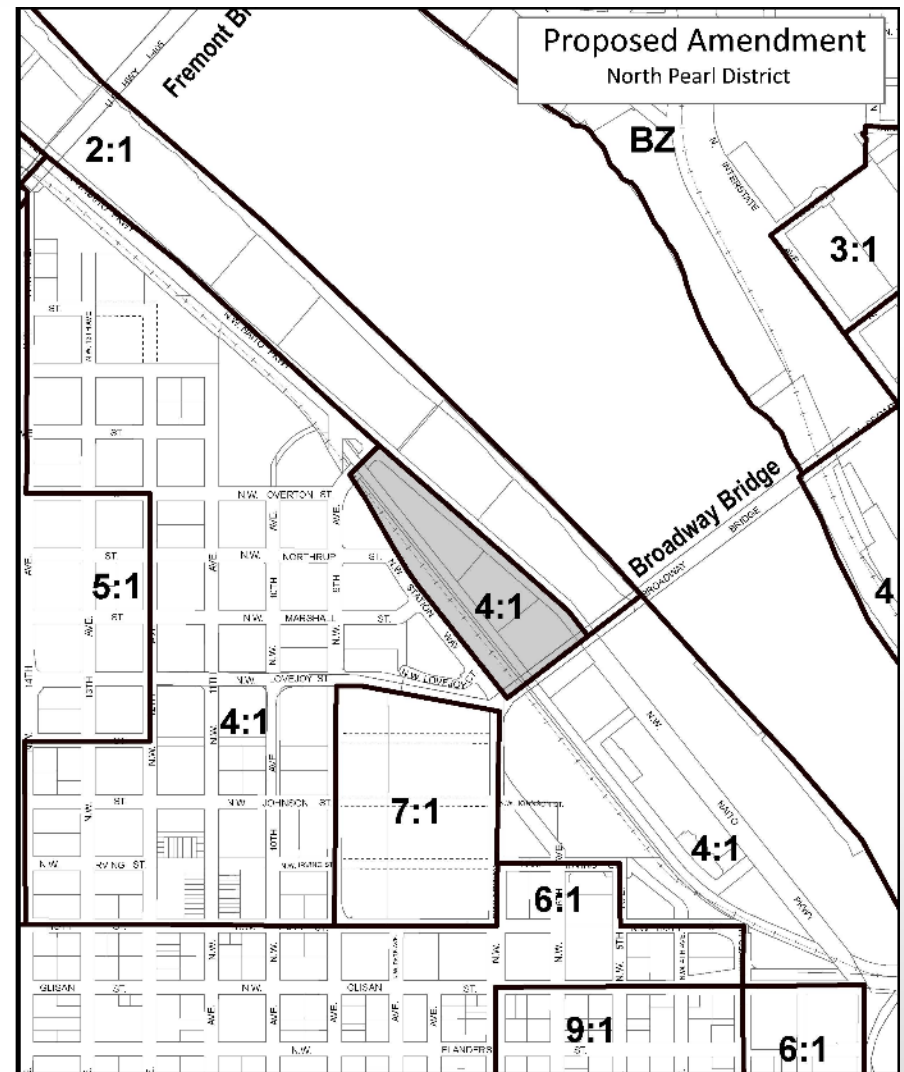


K6: Pearl District



November 28, 2016

- Central City Plan District Boundary
- Focus Area(s)
- FAR area boundary



0 300 600
Scale in Feet



Bureau of Planning and Sustainability
Innovation. Collaboration. Practical Solutions.
City of Portland, Oregon
Charlie Melis, Mayor • Susan Anderson, Director

