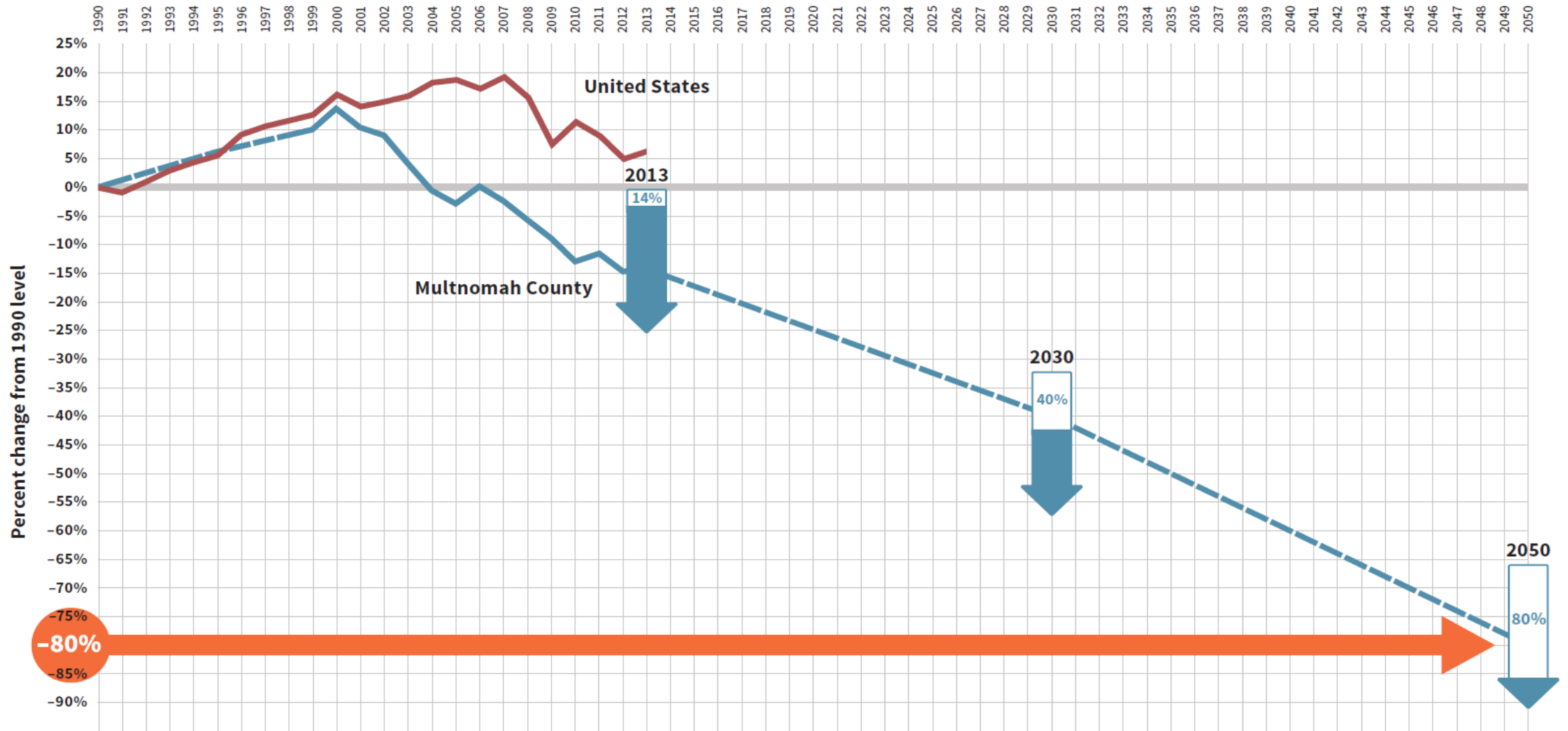




EV Strategy Update

Portland Bureau of Planning & Sustainability

PORTLAND CLIMATE ACTION GOALS




URBAN FORM and TRANSPORTATION




40% of local carbon emissions

2017 EV STRATEGY UPDATE



ELECTRIC VEHICLES: THE PORTLAND WAY




THE PORTLAND STRATEGY AT A GLANCE


1. Adopt and update policies to facilitate the transition to the use of electric vehicles (EVs) in Portland:
 - a. Streamline electrical permitting.
 - b. Provide limited use of the right-of-way for EV charging.
 - c. Adopt consistent signage and parking enforcement standards.
 - d. Reduce vehicle miles traveled by continued education about using transit, walking or biking for trips of 3 miles or less.
 - e. Continue to research best practices regarding EV-friendly development regulations and policies.
2. Promote State and Federal EV tax incentives for Portland residents and businesses
3. Create a new program to serve EVs in garage-free homes
4. Develop strategic relationships and economic development initiatives to support regional job growth within the clean-tech cluster
5. Create the most sustainable municipal fleet in the country
6. Partner with the freight community to facilitate adoption of EVs and plug-in-hybrid technology in the trucking industry
7. Work with carshare companies and transit agencies to ensure affordable access to EV technology
8. Foster existing public and private relationships and look for new partnerships that support EV infrastructure deployment, promote EV adoption and explore progressive technologies

1

2010



2017 CITY OF PORTLAND ELECTRIC VEHICLE STRATEGY



INTRODUCTION

Portland's Climate Action Plan strives to reduce carbon emissions 40 percent by 2030 and 80 percent by 2050. Land use planning and transportation policies and investments are among the most important opportunities to address climate change. In Portland, the transportation of goods and people accounts for nearly 40 percent of local carbon emissions. Shifting from gasoline and diesel to lower-carbon transportation fuels, like electricity, is a key strategy to achieving Portland's climate action goals.

Portland's approach to personal mobility prioritizes safety, health, affordability and environmental quality. The City of Portland (City) is working to create a healthy, connected city that enables safe and convenient walking, biking and transit use, see Figure 1. This Electric Vehicle Strategy focuses on converting the remaining vehicles on the road to electric vehicles, which is one of many strategies the City is taking to reduce carbon emissions from the transportation sector. This strategy also seeks to maximize the benefits of air quality and affordability to low-income residents and parts of Portland that are the most dependent on private vehicles.

Portland's transportation hierarchy for people movement.


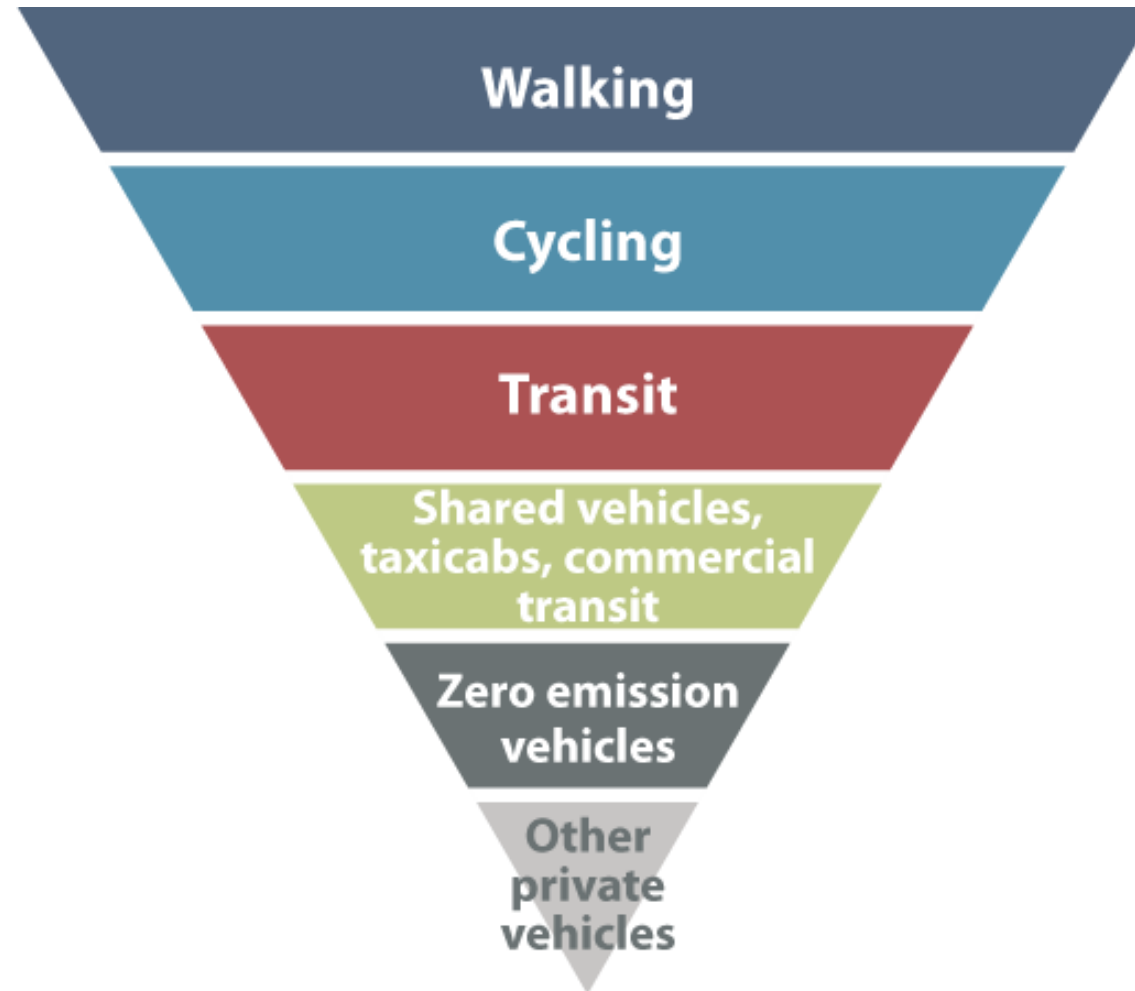


Figure 1. Portland prioritizes transportation options that reduce congestion and carbon emissions.

NOVEMBER 2016 - DRAFT
www.portlandoregon.gov/bps

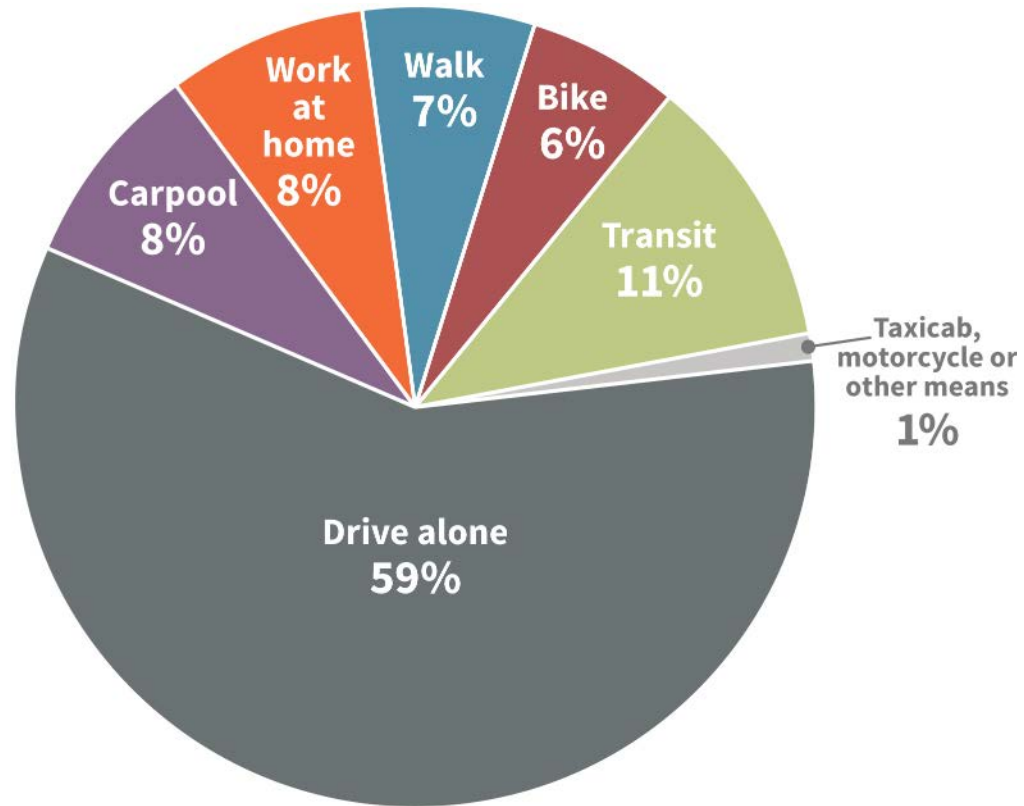
2017

TRANSPORTATION HEIRARCHY

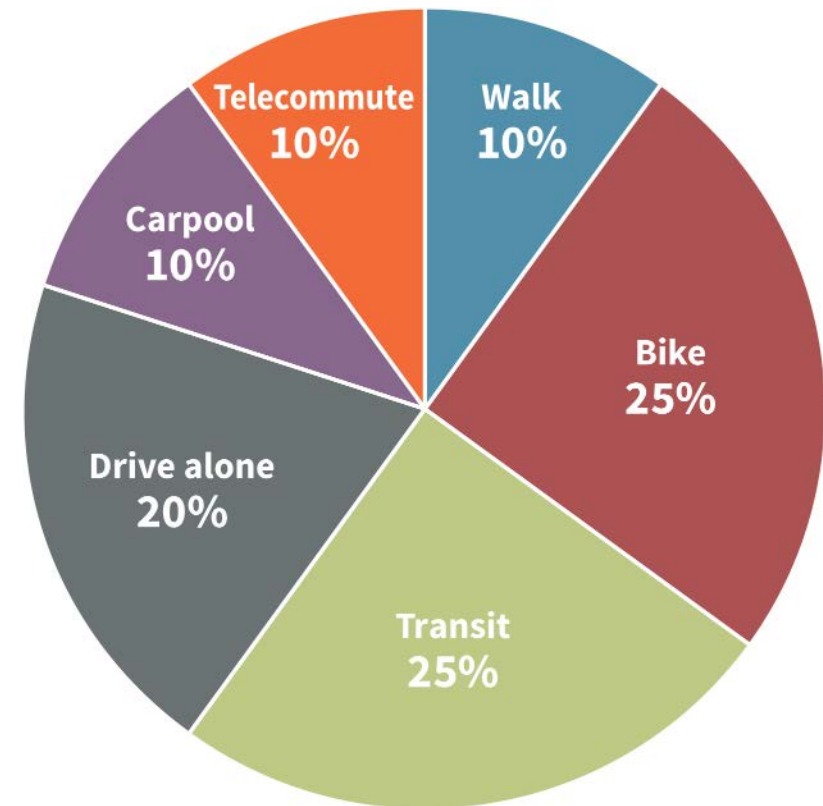


Sources: City of Portland Climate Action Plan, Comprehensive Plan, and Transportation Systems Plan.

2012 Work Commute Mode Share



2030 Target Work Commute Mode Share



EVS ARE THE FUTURE

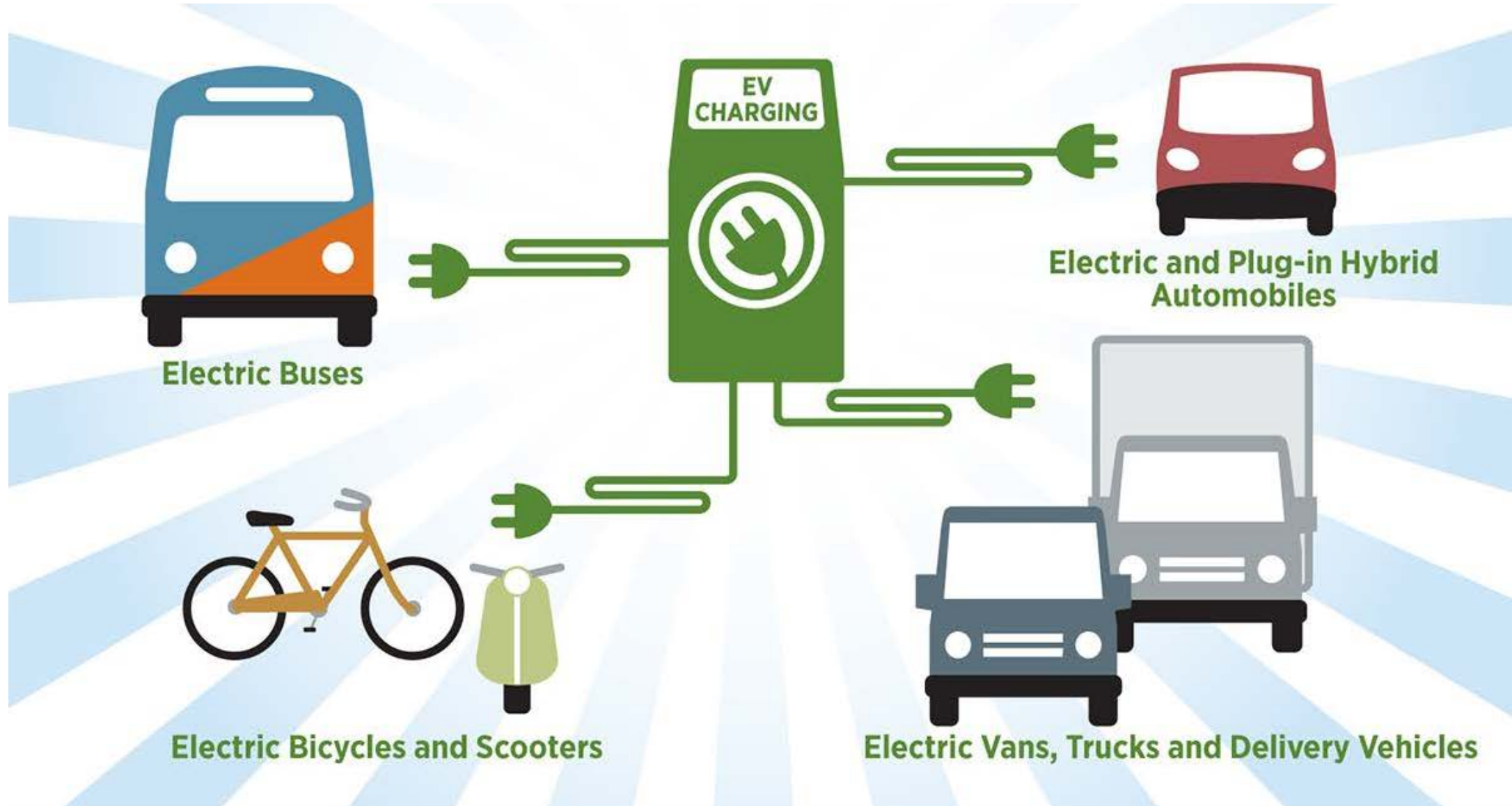
- All new cars to be zero emission vehicles by 2050
- Over 10,000 EVs in Oregon





Cost

“ELECTRIC VEHICLES”



GOAL: REPLACE GAS and DIESEL VEHICLES with EVs

- Increase awareness of EVs and access to chargers
- Increase affordable access, especially to low-income populations & communities of color
- Electrify fleets
- Support EV-related innovation



INCREASE AWARENESS and ACCESS to CHARGERS

- EV Showcase
- EV ready buildings
- E-mobility charging pods
- Policies that enable installation of chargers in strategic locations



INCREASE AFFORDABLE ACCESS to EVs

- Electric car and e-bike share pilot projects
- Pop-up EV Showcase events in East Portland
- Affordable housing Green Building Policy
- Used EV bulk buy programs
- Mobility needs assessment



ELECTRIFY FLEETS

- Electrify delivery vehicles
- Continue to electrify CityFleet
- Electrify TriMet buses



SUPPORT EV-RELATED INNOVATION

- Support electric shared mobility
- Continue Smart Cities work
- Electrify BIKETOWN
- Support Portland's clean technologies leadership
- Electric autonomous vehicles



