



# CENTRALCITY 2035

## Decision Packet B: Scenic Resources

PSC Work Session 1 – 9/27/2016



**Bureau of Planning and Sustainability**

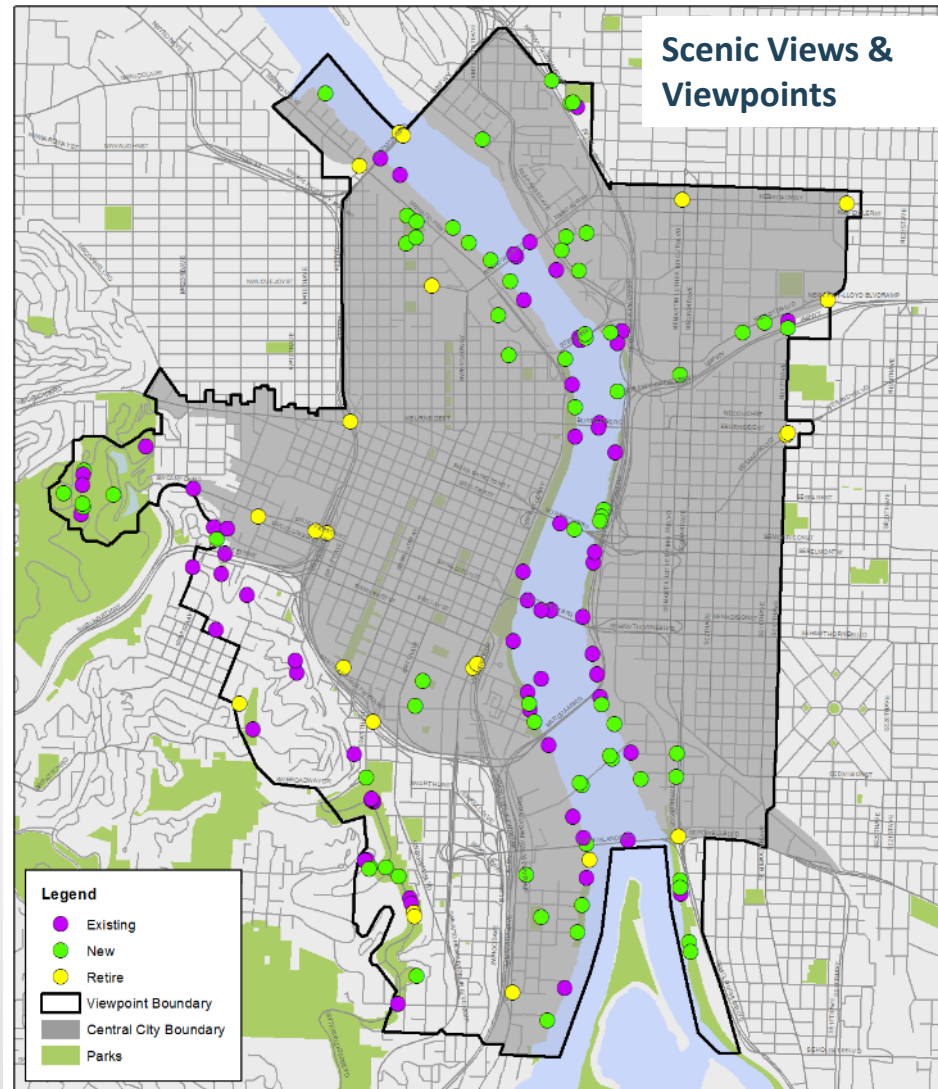
*Innovation. Collaboration. Practical Solutions.*

City of Portland, Oregon

Charlie Helms, Mayor • Susan Anderson, Director



# Scenic Resources



# Scenic Resources

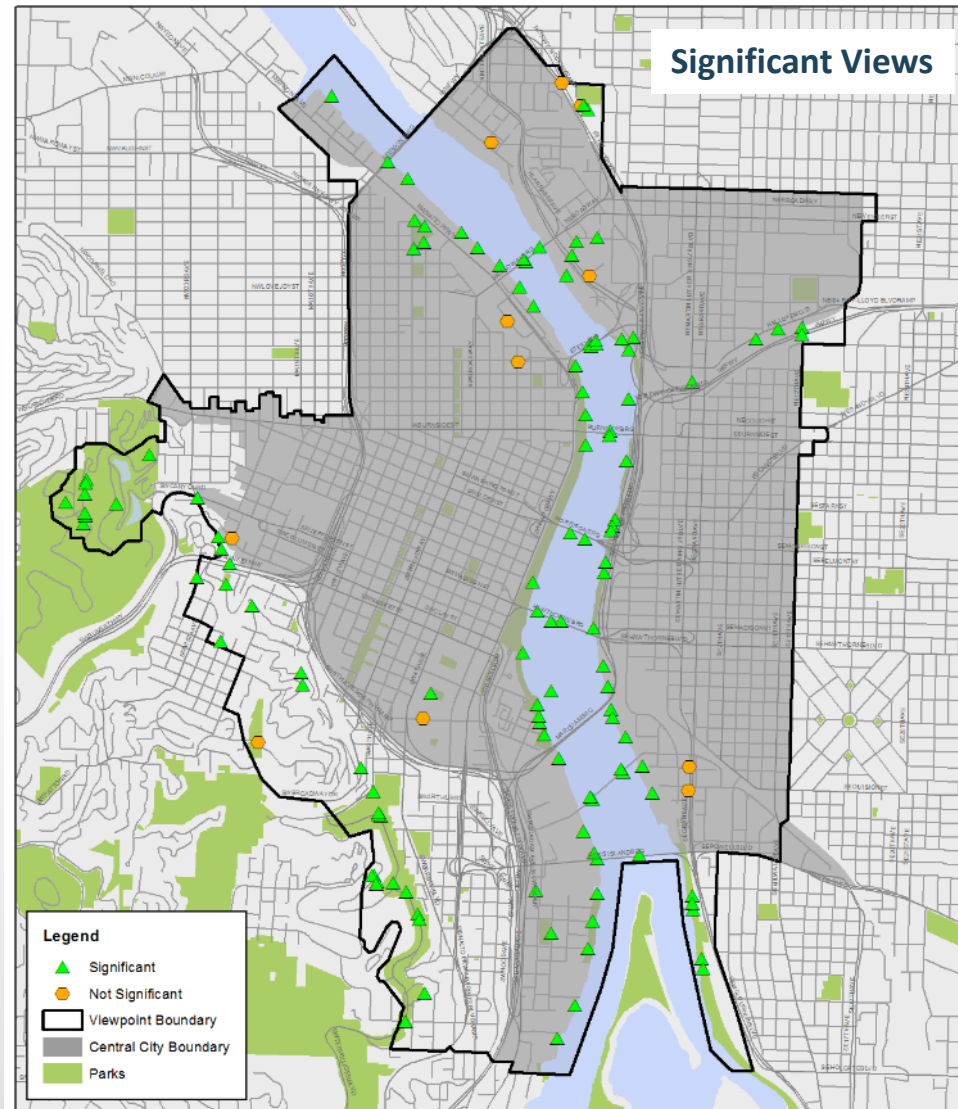
Statewide Planning Goal 5 requires a specific process.

Goal 5 does not prescribe an outcome to the process.

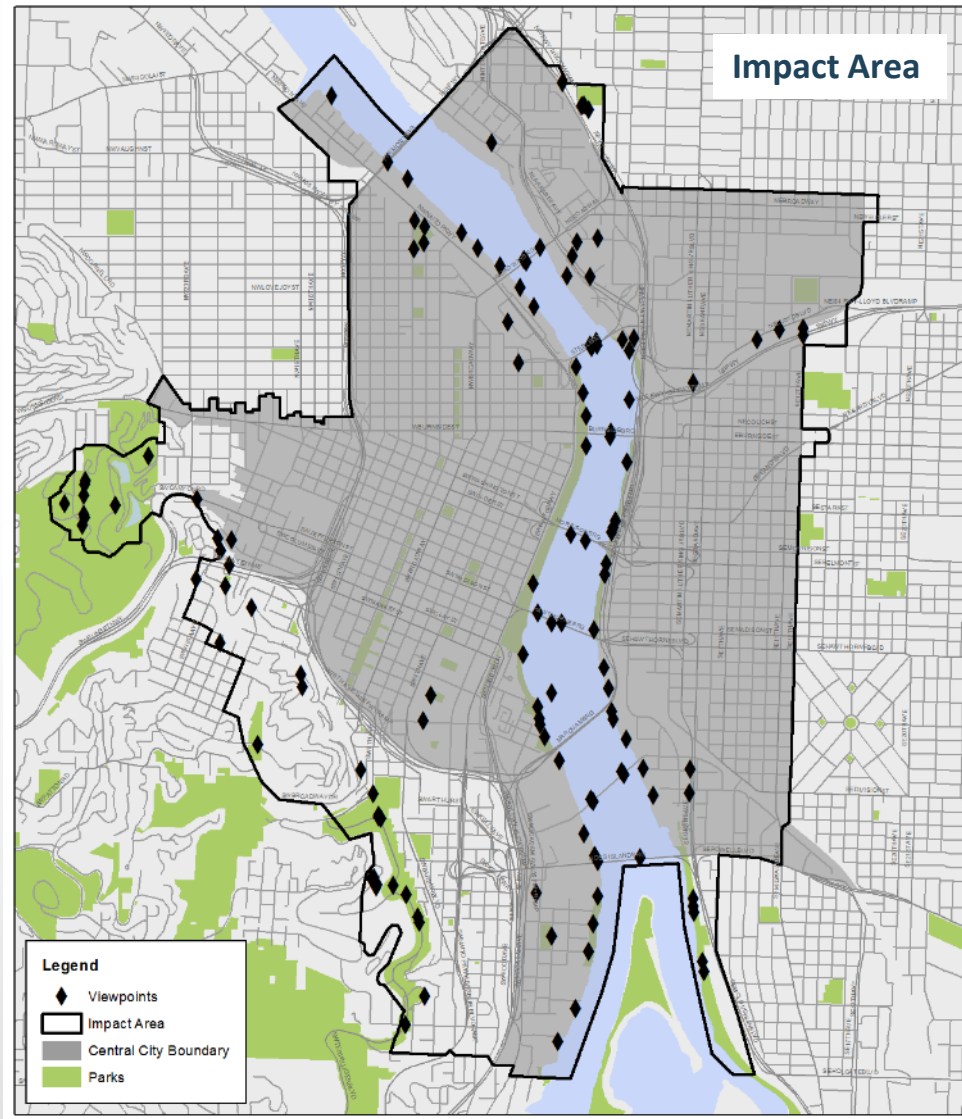
Jurisdictions have flexibility to make policy choices.



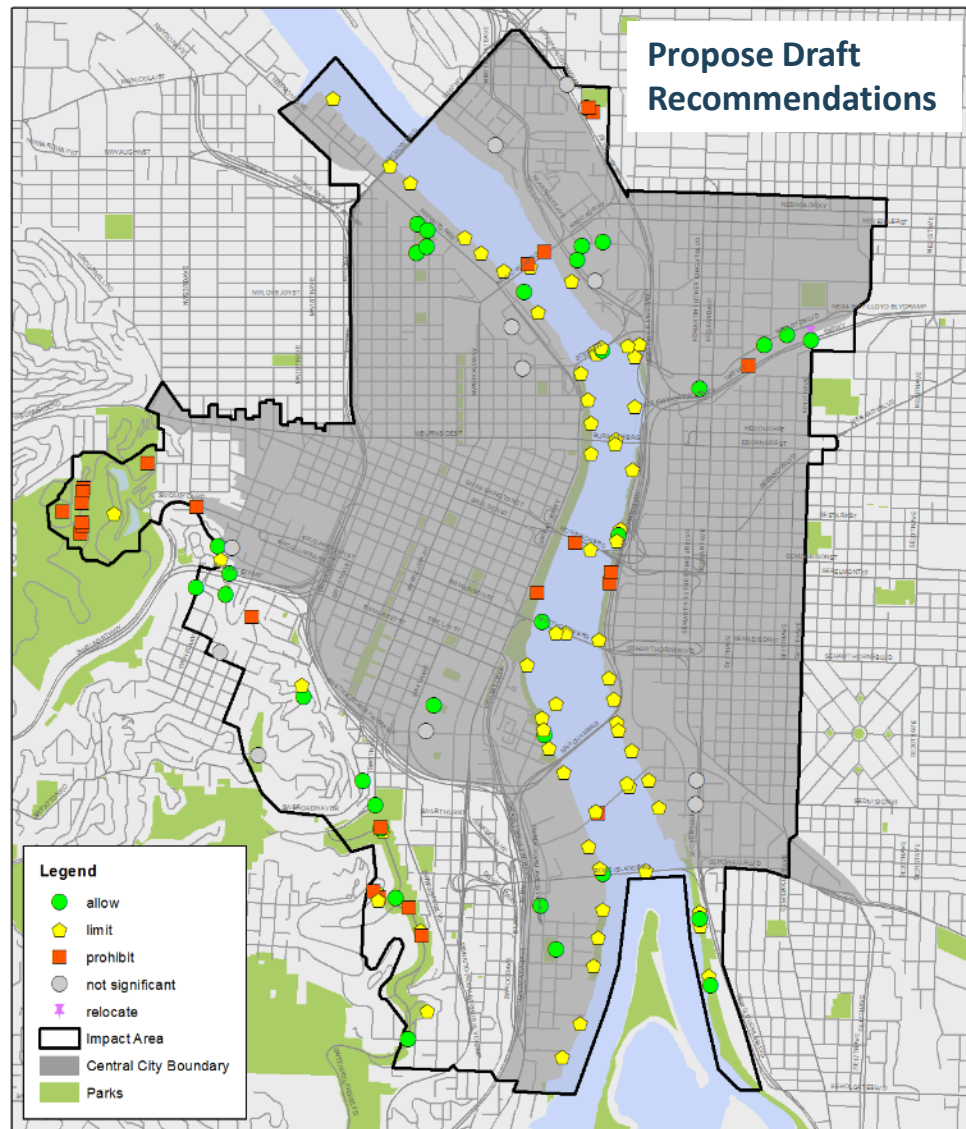
# Scenic Resources



# Scenic Resources



# Scenic Resources



# Discussion Packet B: Scenic Resources

B1: View of Mt Hood from the Japanese Garden



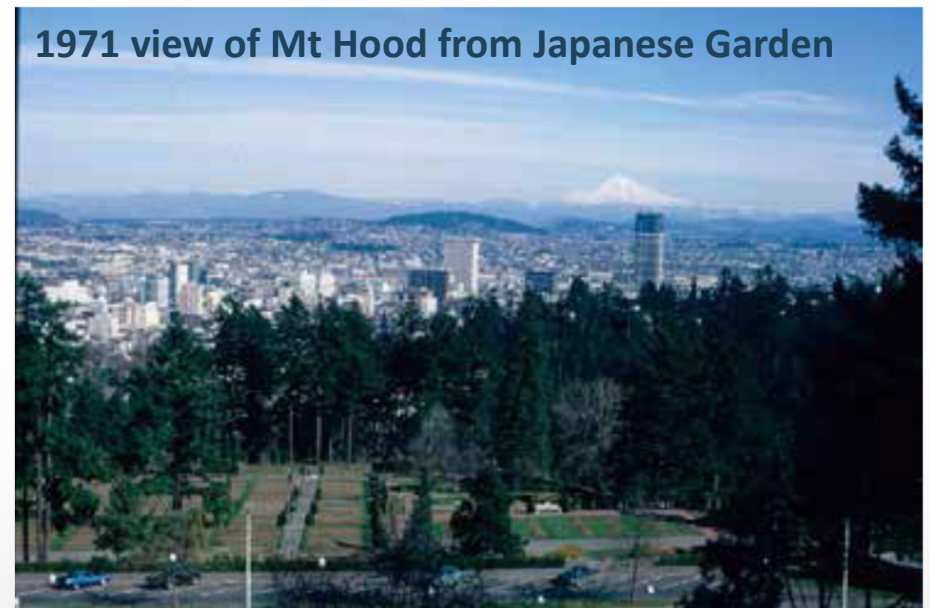
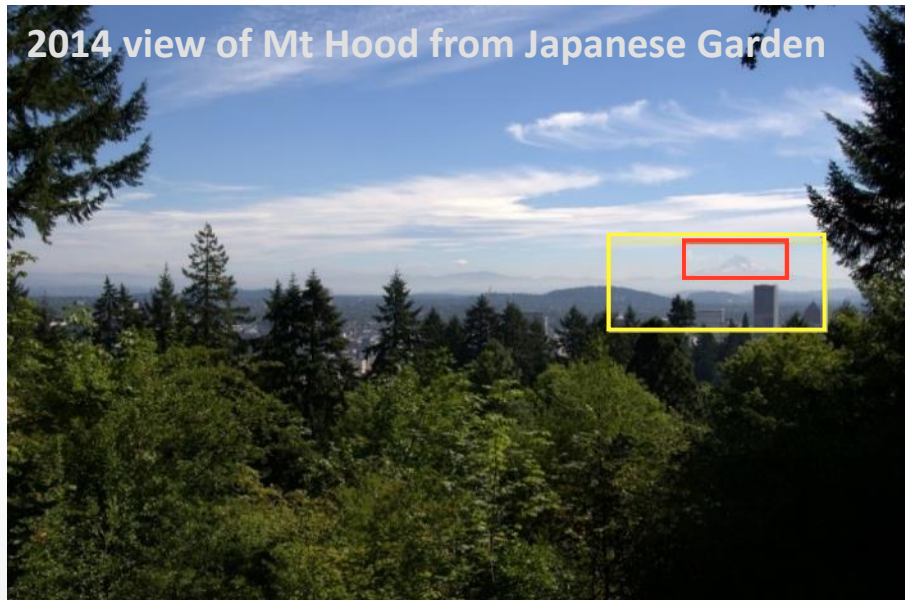
B2: View of the Vista Bridge from Jefferson St



B3: View of Mt Hood from Salmon Springs



# B1: View of Mt Hood from Japanese Garden

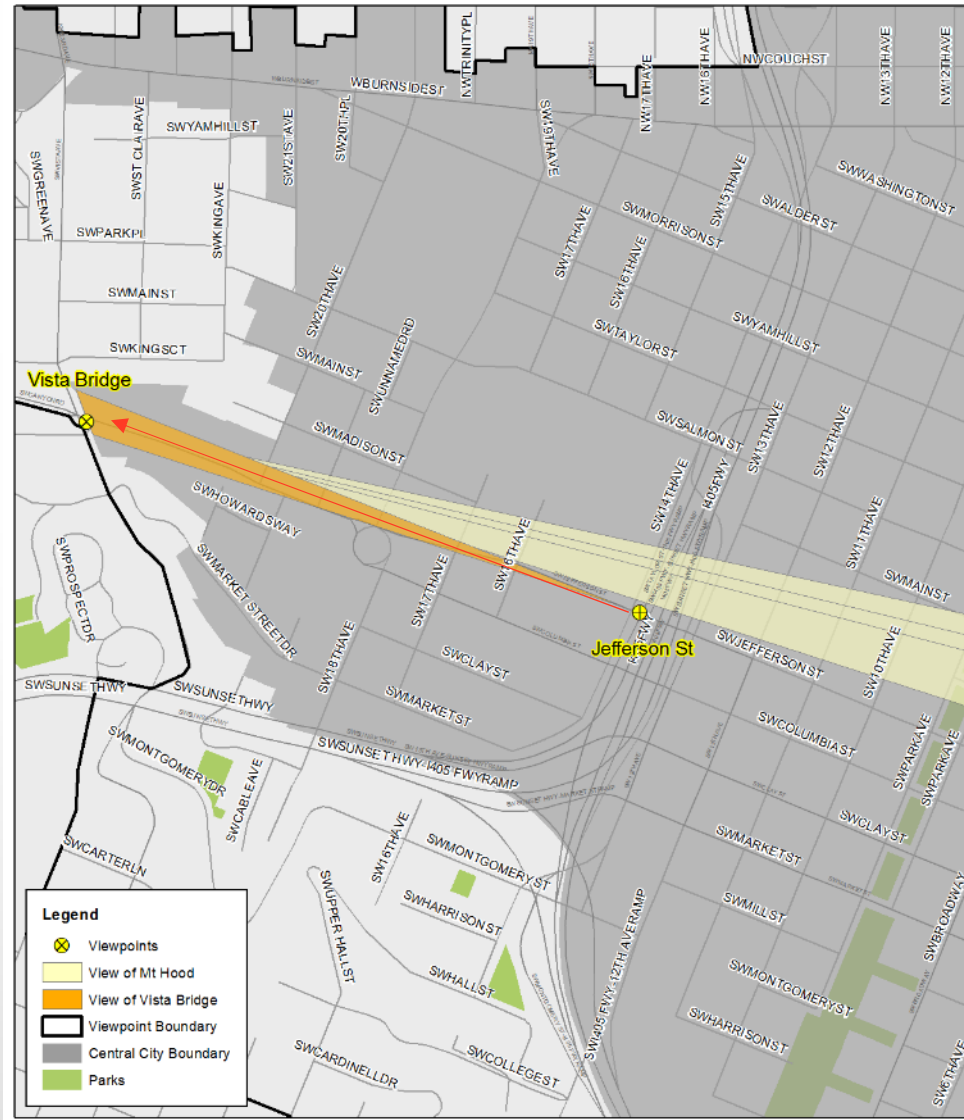


Staff Recommendation: Retain the Proposed Draft version (left photo)





# B2: View of Vista Bridge from Jefferson St

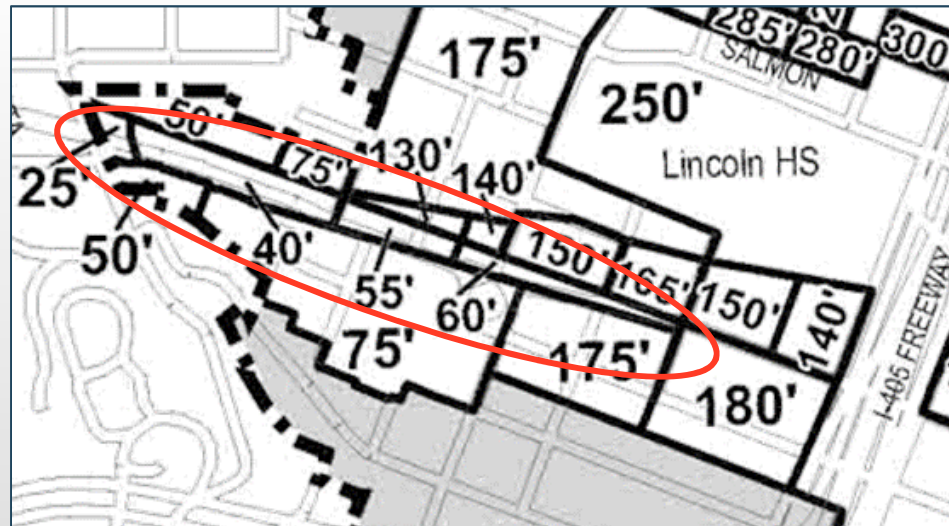


# B2: View of Vista Bridge from Jefferson St

Existing Heights



Proposed Draft Heights



## B2: View of Vista Bridge from Jefferson St

### Staff Recommendations:

1. Amend the heights along Jefferson St to 75ft
2. Add a new viewpoint at Collins Circle
3. Add actions to develop the viewpoint at Collins Circle and improve pedestrian connectivity



# B2: View of Vista Bridge from Jefferson St

Rendering of Existing Heights



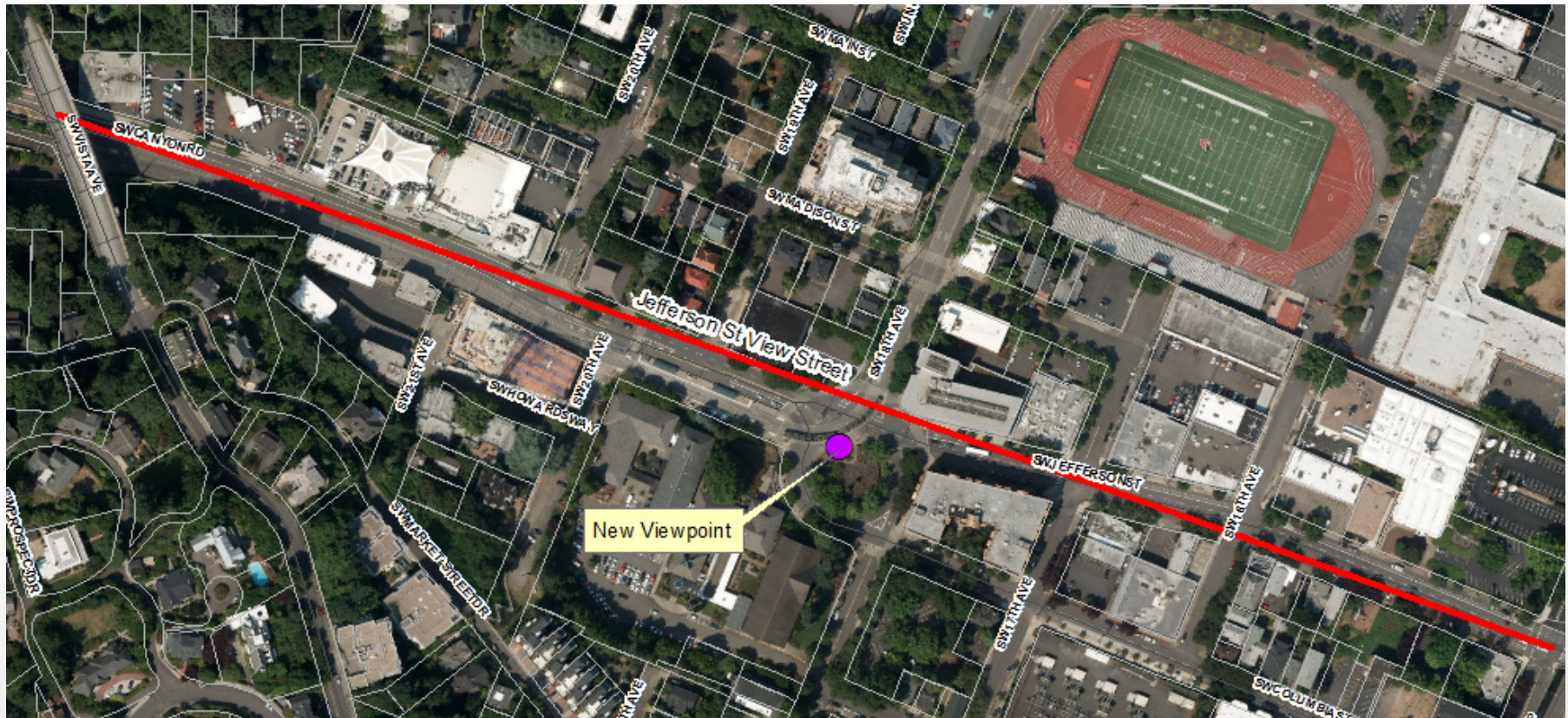
Rendering of Amended Draft Heights



1. Amend the heights along Jefferson St to 75ft



# B2: View of Vista Bridge from Jefferson St



2. Add a new viewpoint at Collins Circle



# B2: View of Vista Bridge from Jefferson St



3. Develop a formal viewpoint and improve pedestrian connectivity



## B2: View of Vista Bridge from Jefferson St

### Staff Recommendations:

1. Amend the heights along Jefferson St to 75ft
2. Add a new viewpoint at Collins Circle
3. Add actions to develop the viewpoint at Collins Circle and improve pedestrian connectivity



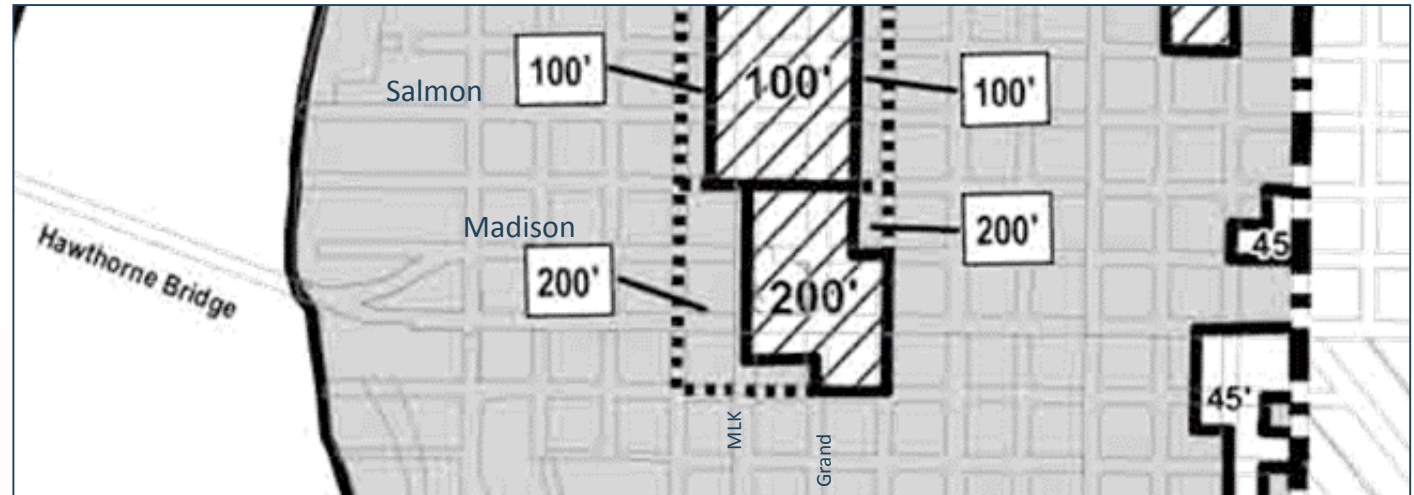
# B3: View of Mt Hood from Salmon Springs



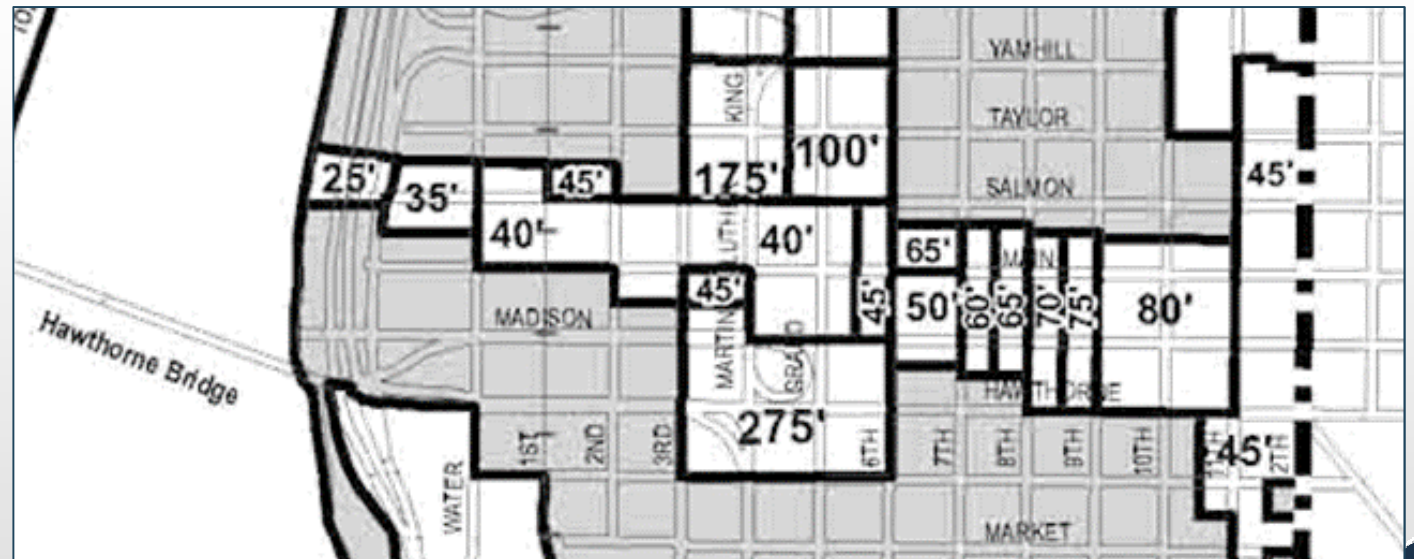


# B3: View of Mt Hood from Salmon Springs

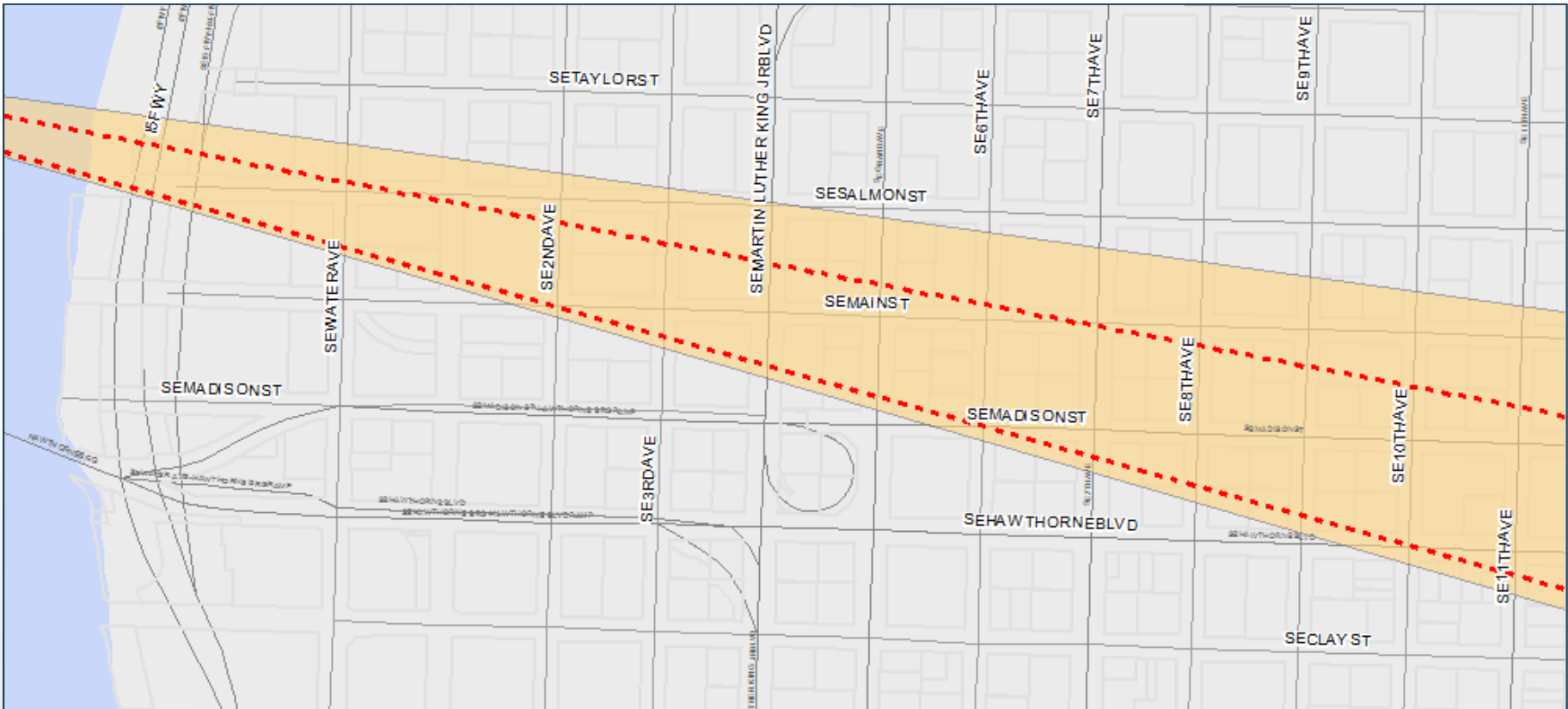
Existing Base Heights



Proposed Draft Bonus Heights



# B3: View of Mt Hood from Salmon Springs



Staff Recommendation: Amend the view corridor by narrowing it and by raising the bottom elevation

# B3: View of Mt Hood from Salmon Springs

Proposed Draft Heights



Amended Heights



# B3: View of Mt Hood from Salmon Springs

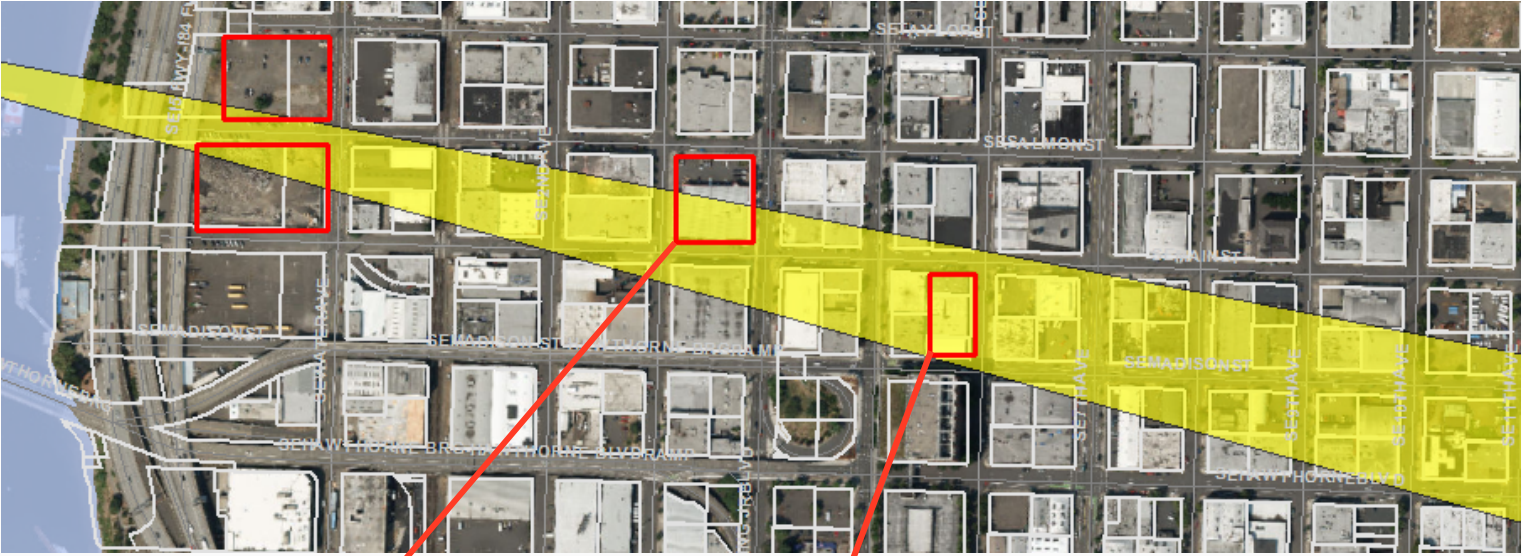
Proposed Draft Heights



Amended Heights



# B3: View of Mt Hood from Salmon Springs

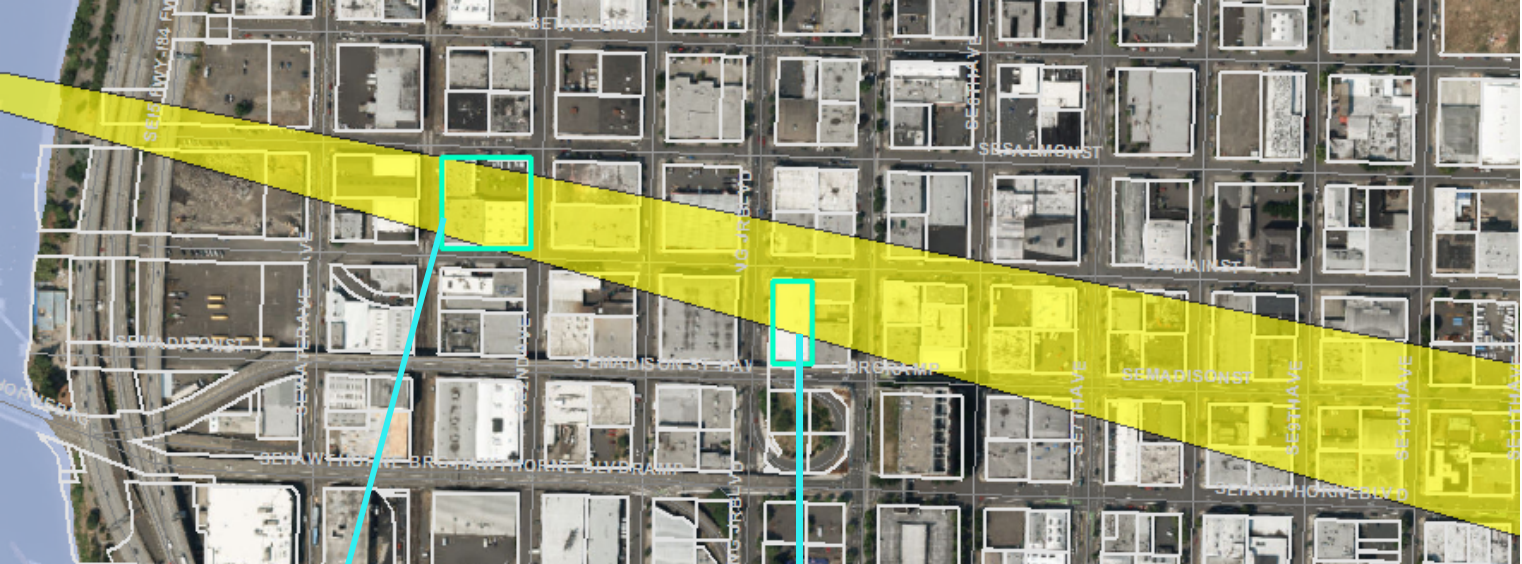


Zone: IG1(EX)  
 Current Code: 6-8 stories  
 Amended Code: 3-4 stories



Zone: IG1(EX)  
 Current Code: 7-9 stories  
 Amended Code: 3-4 stories

# B3: View of Mt Hood from Salmon Springs

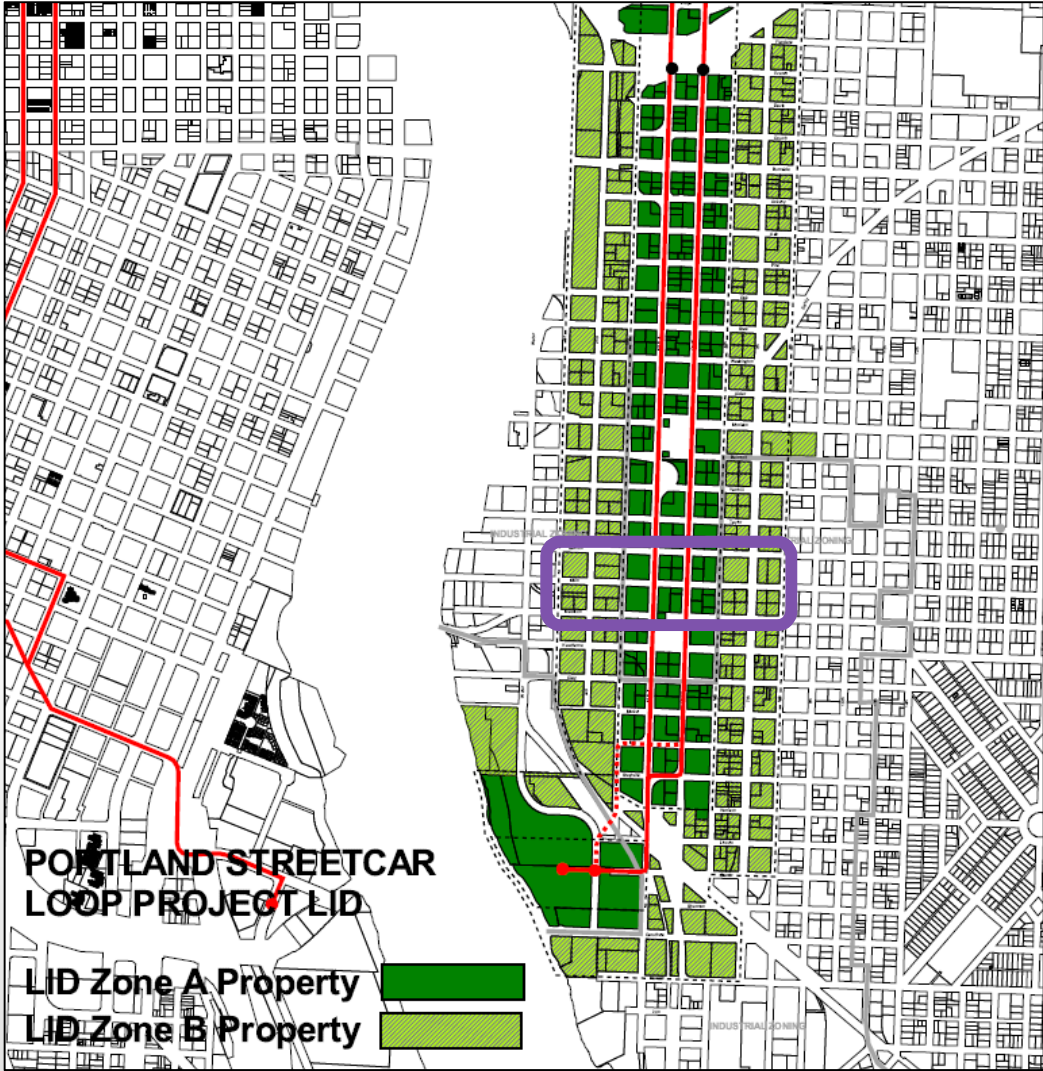


Zone: IG1  
Current Code: 6-7 stories  
Amended Code: 3-4 stories



Zone: EX  
Current Code: 9-11 stories  
Amended Code: 3-4 stories

# B3: View of Mt Hood from Salmon Springs



## B3: View of Mt Hood from Salmon Springs



Staff Recommendation: Amend the view corridor by narrowing it and by raising the bottom elevation

