



# Miscellaneous Zoning Code

## Major Public Trails

August 23, 2016

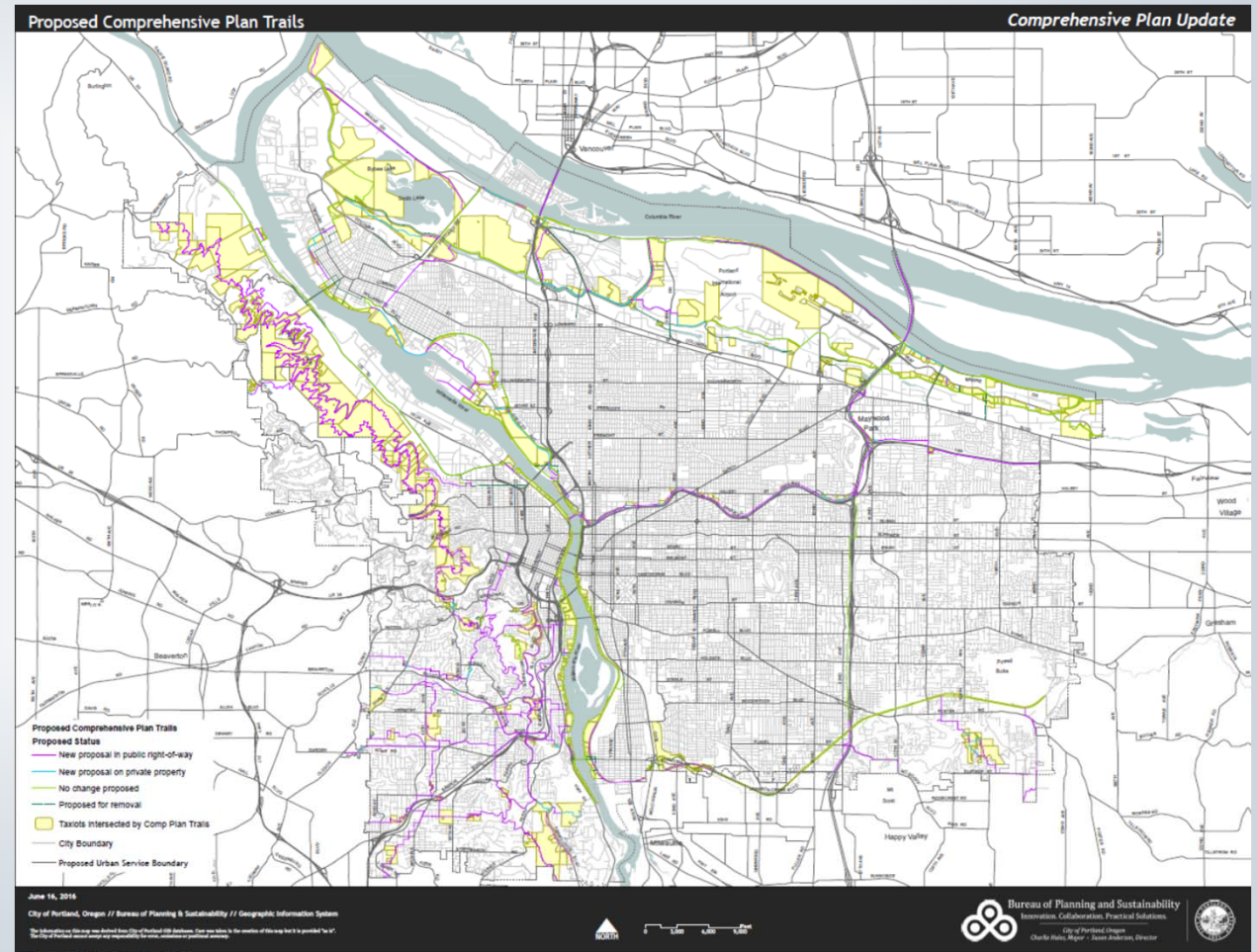


Bureau of Planning and Sustainability  
Innovation. Collaboration. Practical Solutions.



# Purpose of Miscellaneous Zoning Project Major Public Trail Proposal

Reconcile the zoning map trail designation with the adopted 2035 Comprehensive Plan Major Public Trails map (Figure 8.2)



# Background

The adopted 2035 Comp Plan Major Public Trail map was based on the following principles:

1. Add newly adopted regional trail alignments
2. Remove outdated alignments
3. Align the trail designation with a preferred trail alignment or a built trail
4. Add significant connections in SW Portland based on the SW Urban Trails Network





# What is in front of you today

- Miscellaneous Zoning Amendments proposed draft
- August 18, 2016 memo from staff with 2 spreadsheets
- Major Public Trails map with amendments that match staff recommendations contained in the 2 spreadsheets



# Response to 40-Mile Loop Testimony

Staff generally agree to keep or add a trail alignment when:

- the request is on land in public ownership or in a public right-of-way, AND
- the alignment corresponds to a segment of a Metro Regional Trail, or a City of Portland planned or built trail

Examples: Marquam and Forest parks, St. Johns, Hawthorne and Tilikum Crossing bridges, various public rights-of-way.



# Response to 40-Mile Loop Testimony

Staff **generally did not agree** to keep an existing alignment or adding a new alignment when:

- recent trail planning or trail building efforts have identified a preferred alignment
- no trail planning effort has occurred
- the alignment is not in the City of Portland, except for the Springwater Corridor.

Examples: locations along the Columbia Slough, the Willamette Shoreline Trolley alignment



---

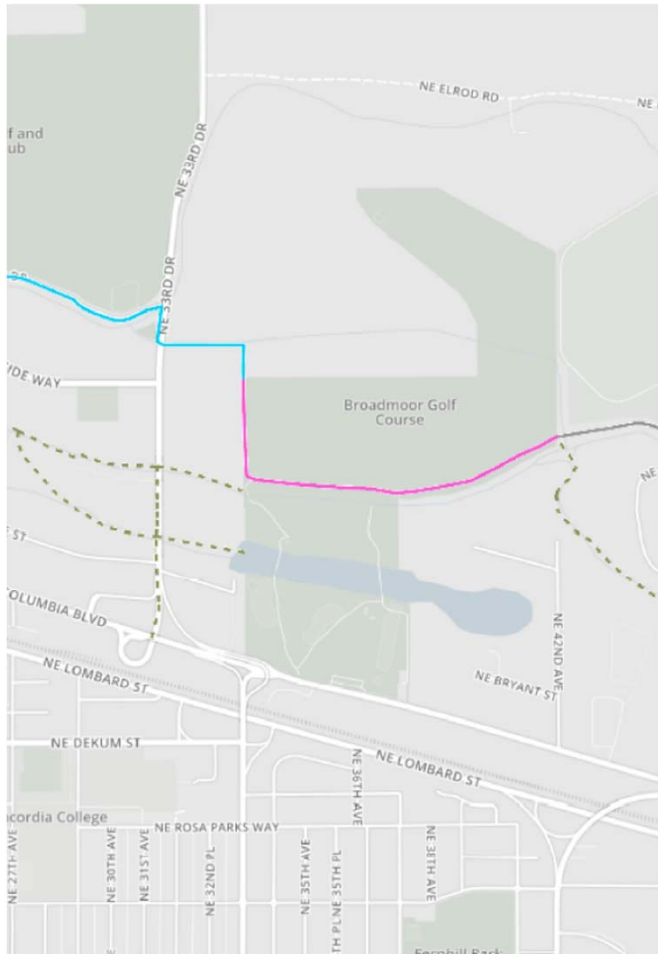
# Response to Property Owner Testimony





# Broadmoor

Original proposal

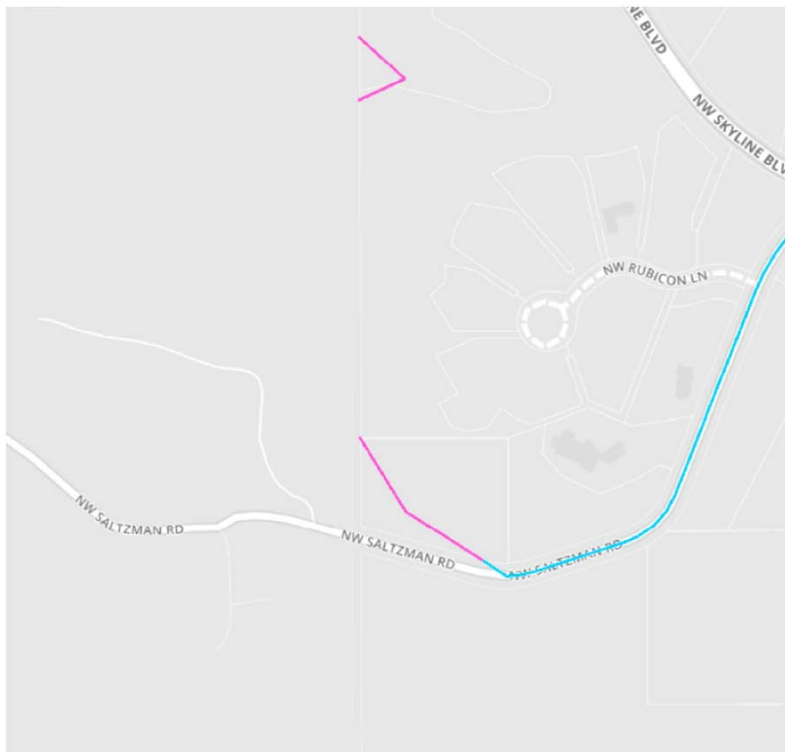


Staff recommendation

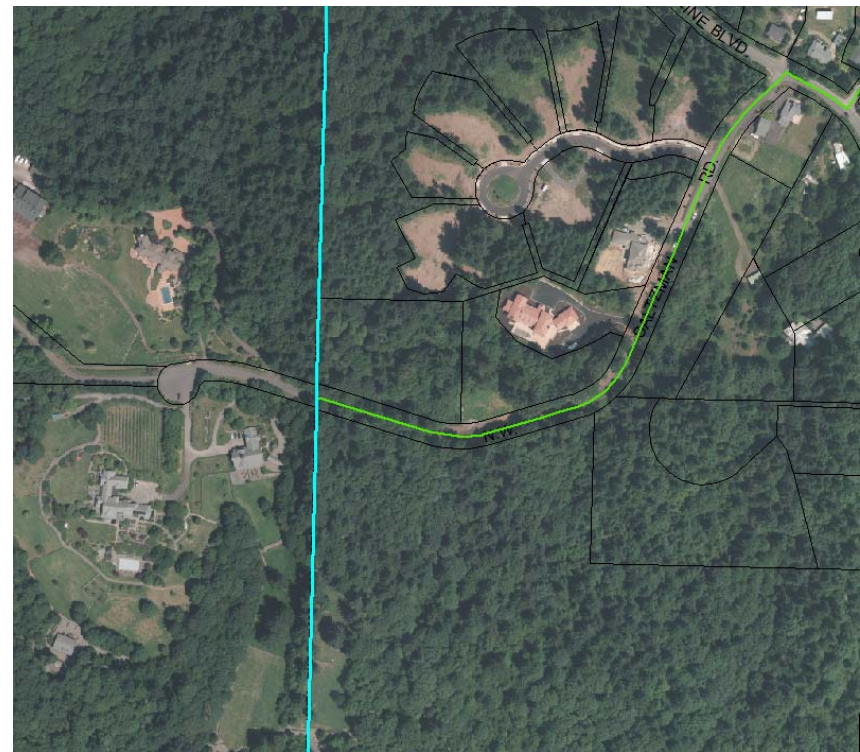


# Saltzman Road

Original proposal

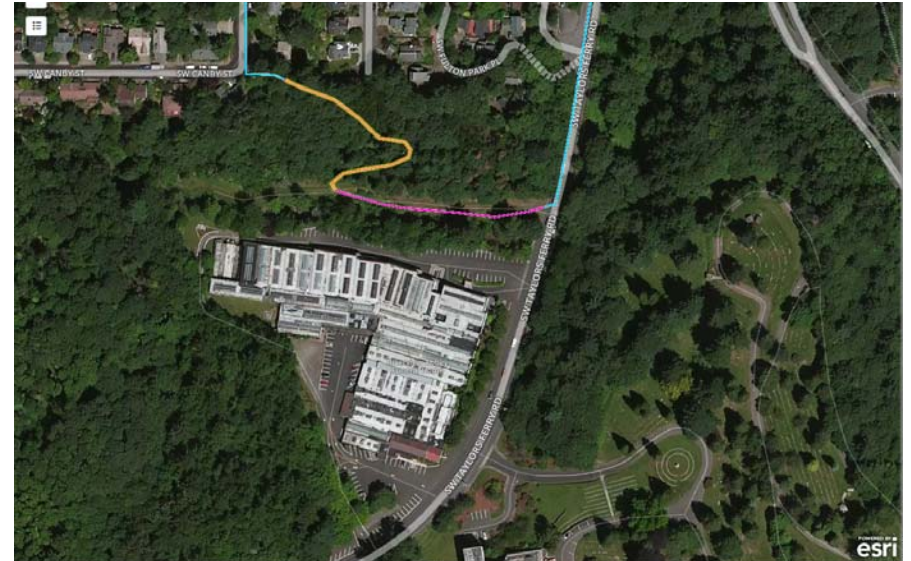
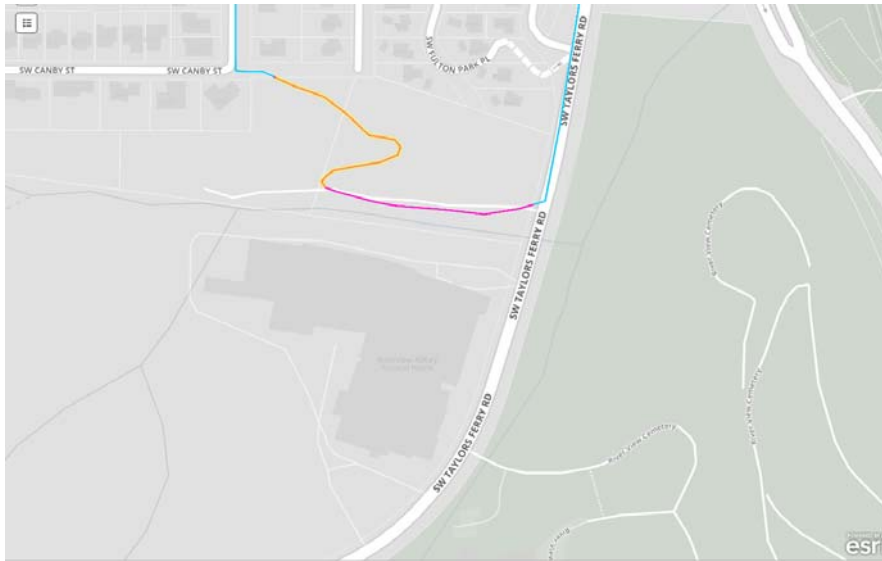


Staff recommendation



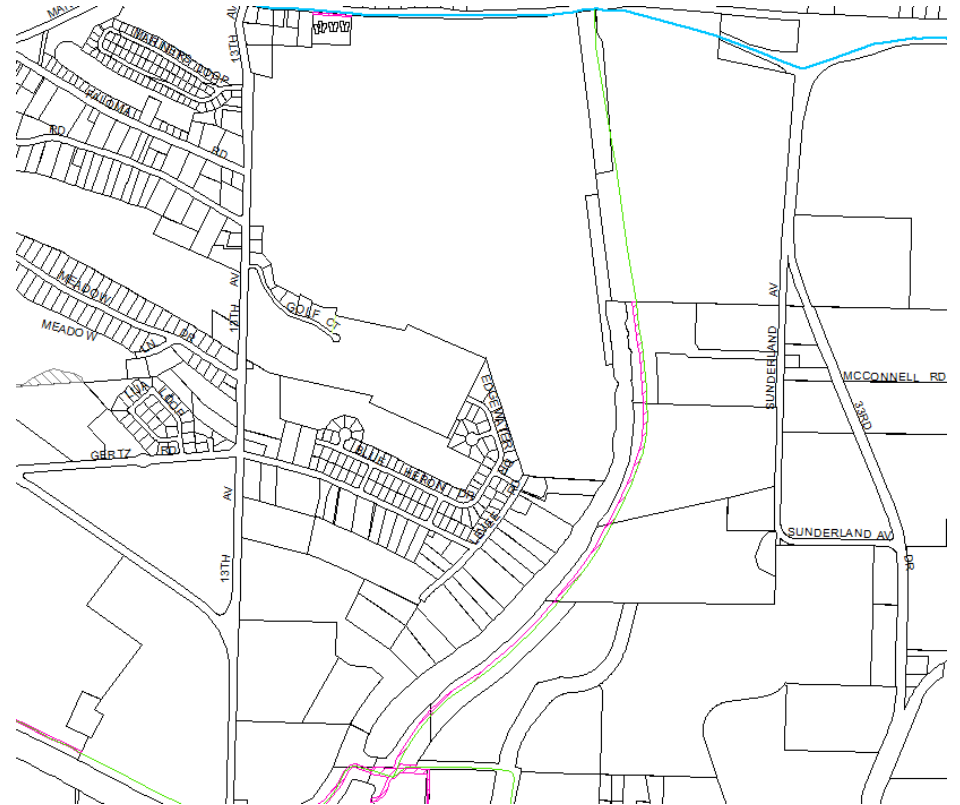
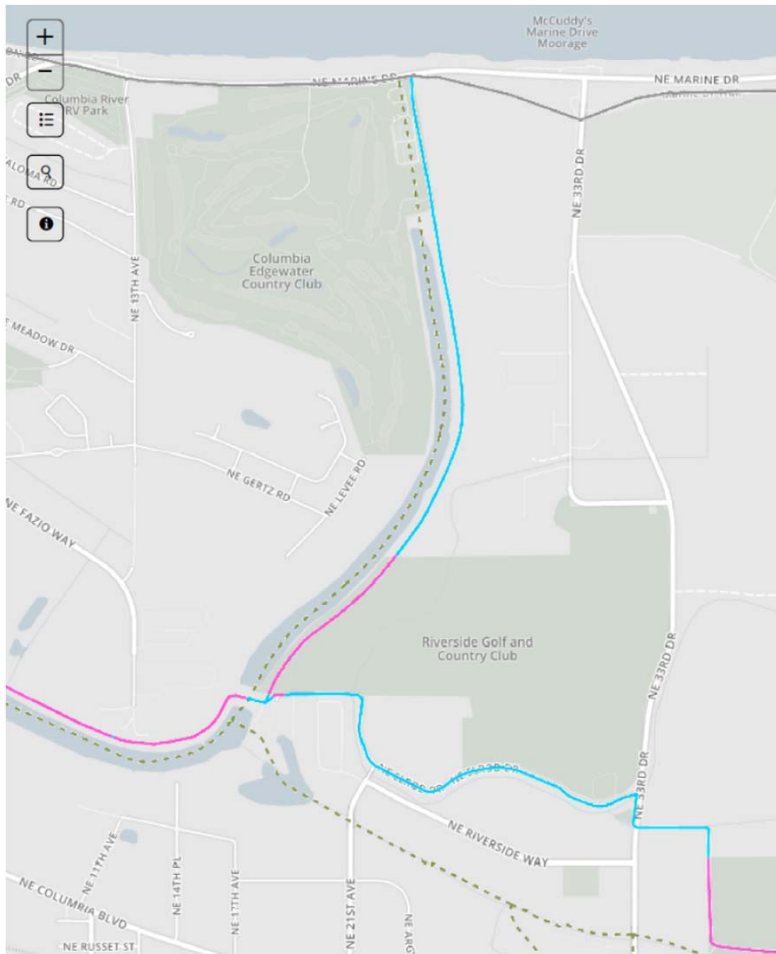
# Riverview Abbey

Staff recommendation

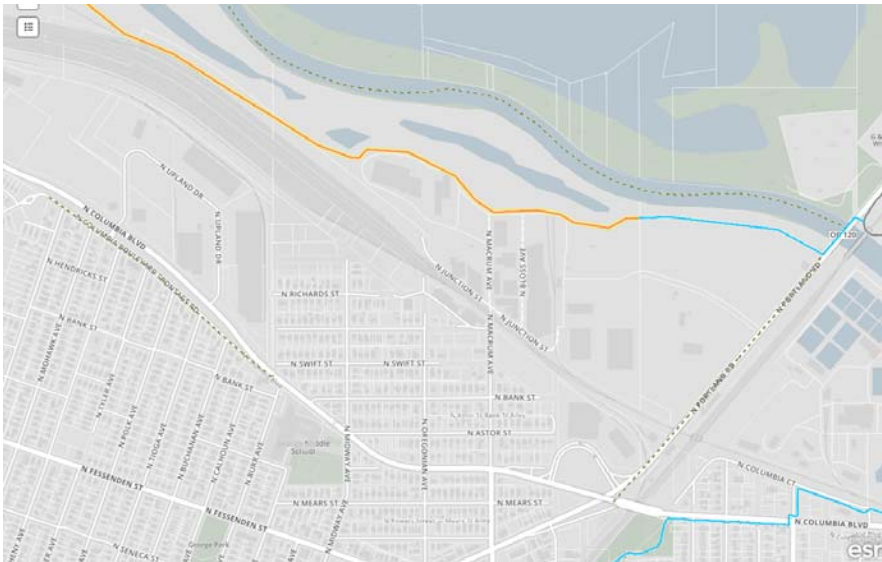




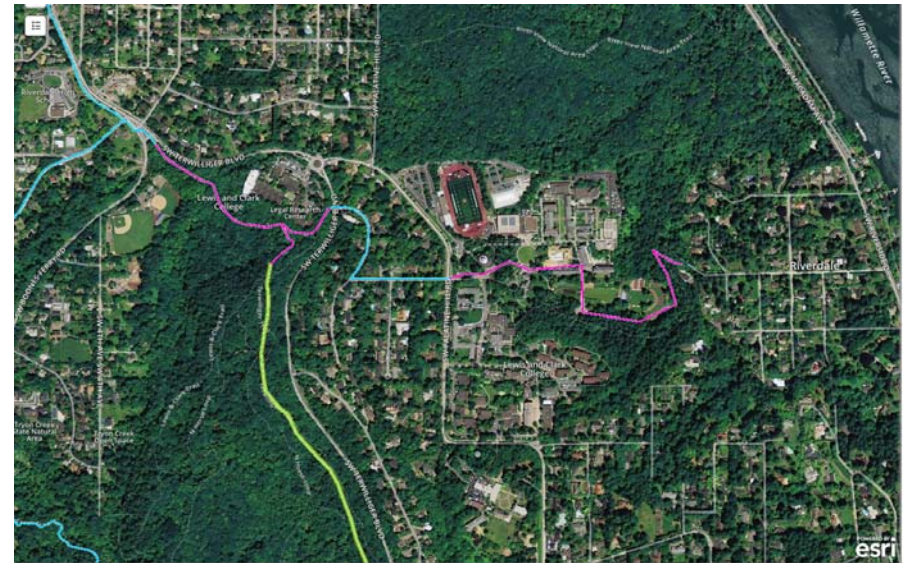
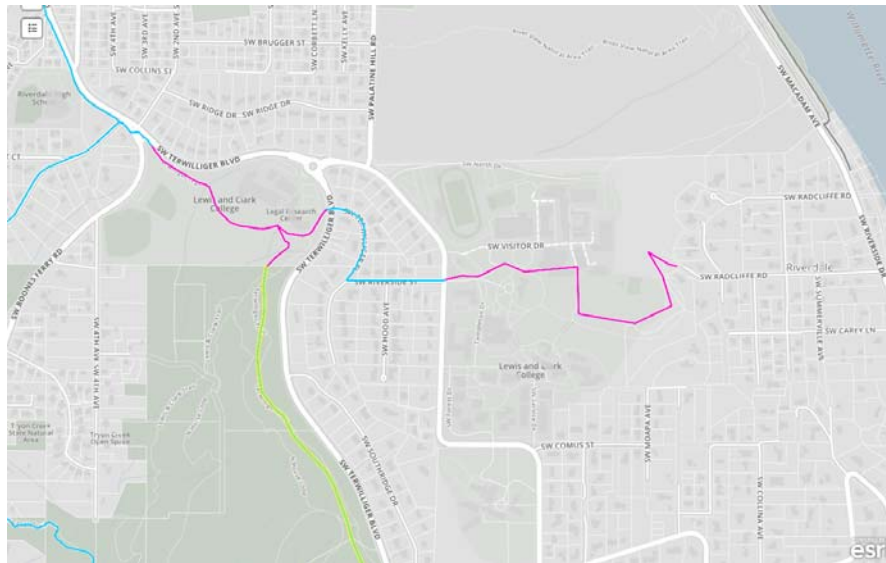
# Peninsula Canal



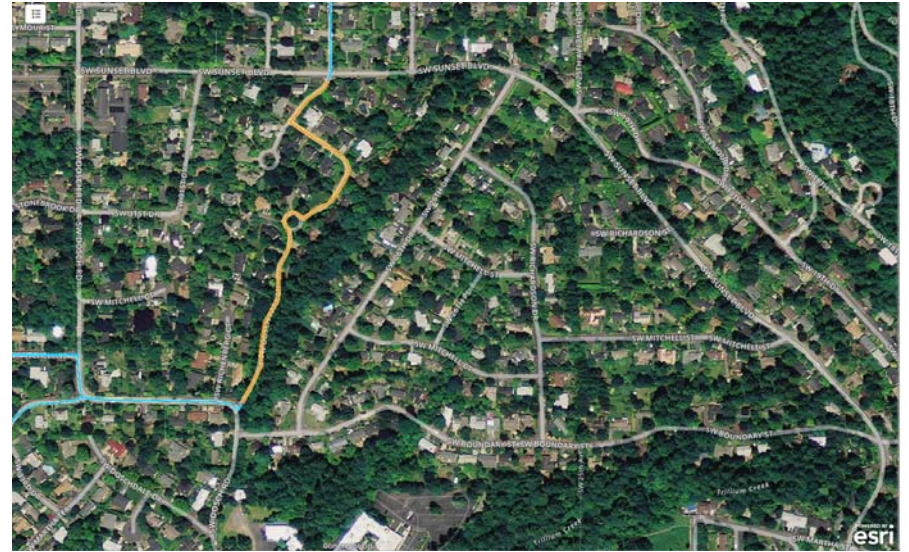
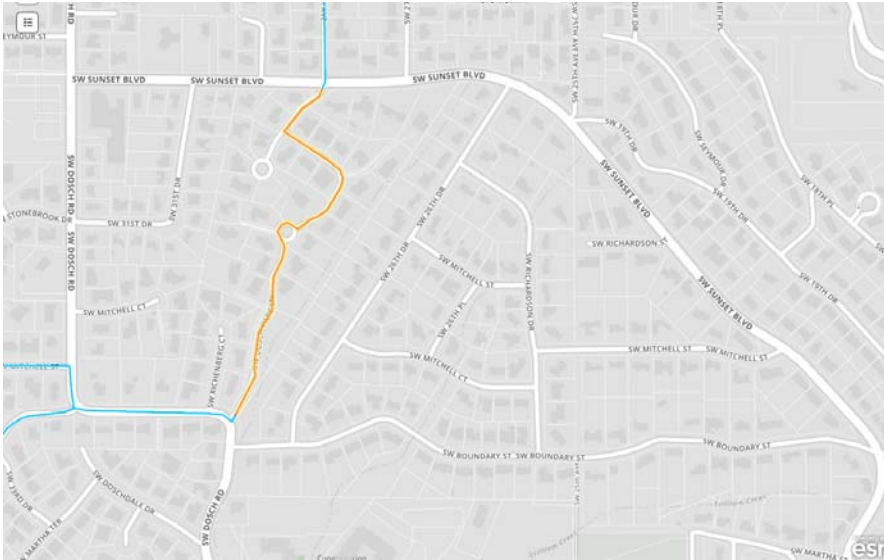
# Columbia Steel Casting



# Lewis and Clark

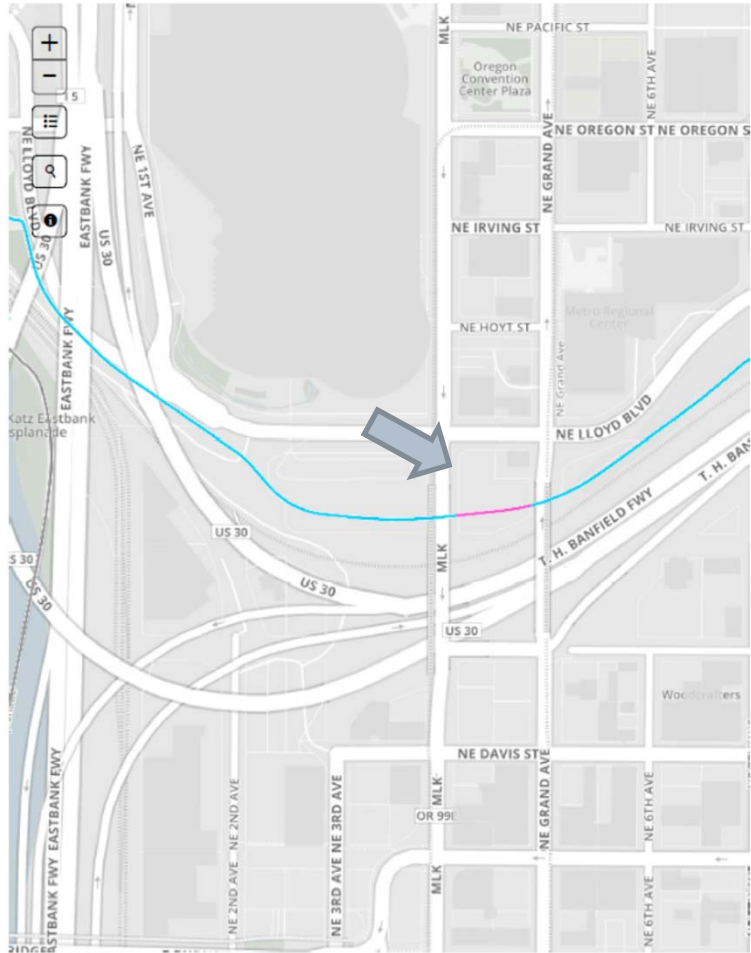


# SW Dosch Park Lane

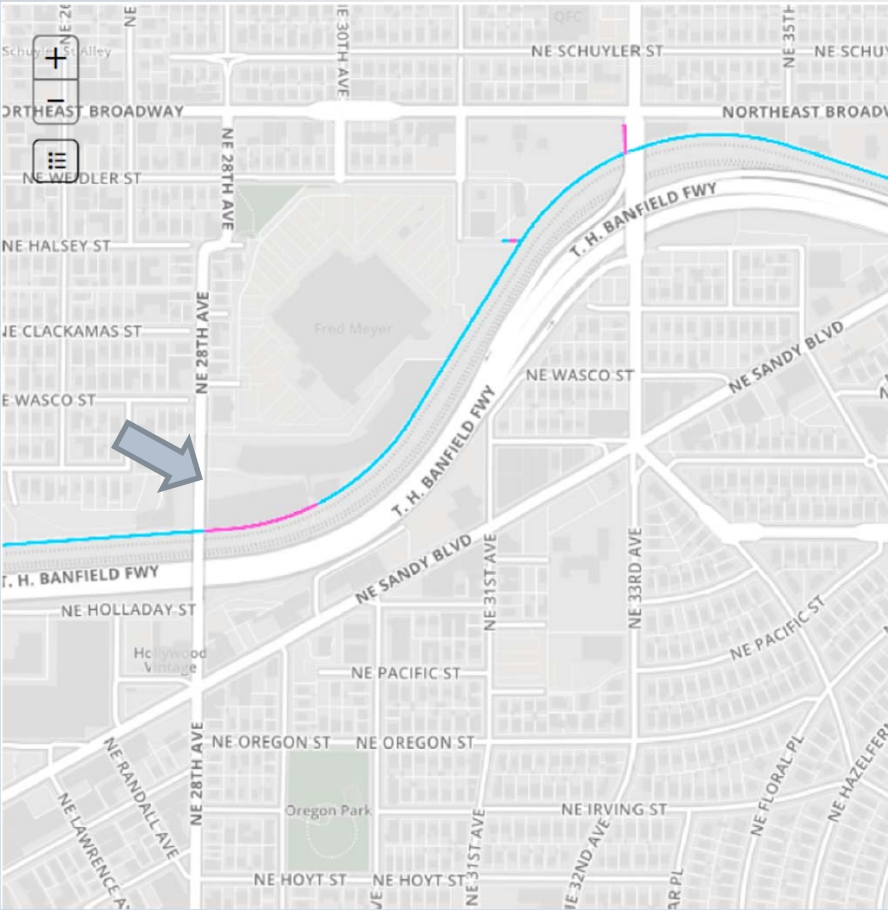




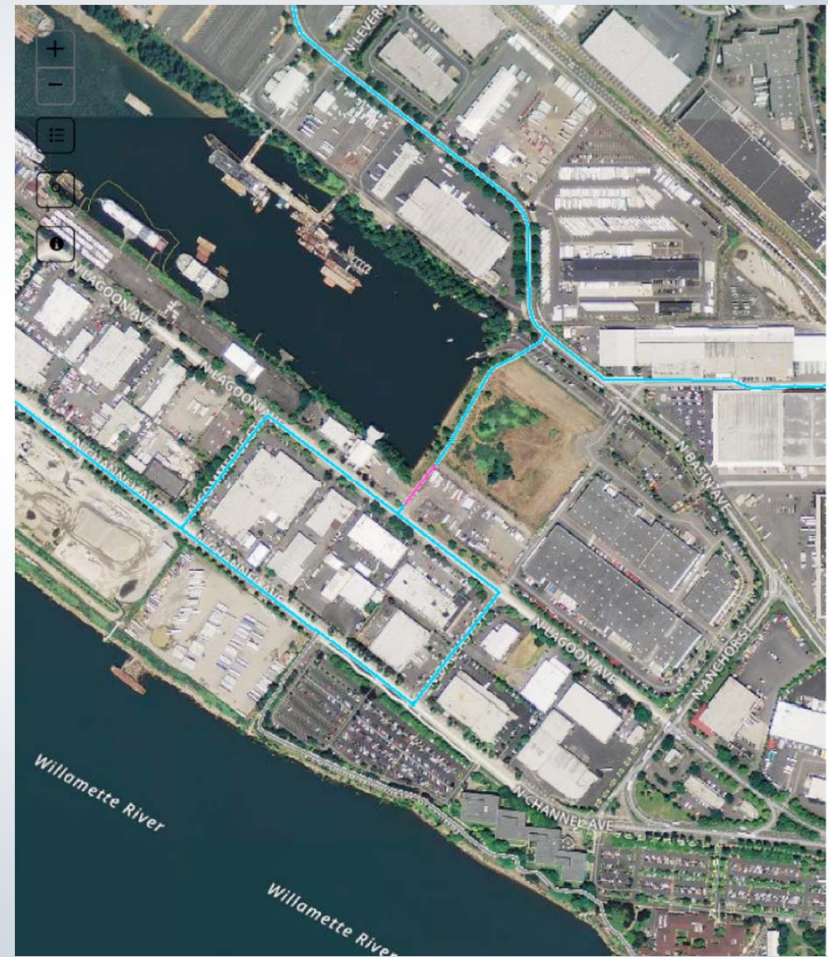
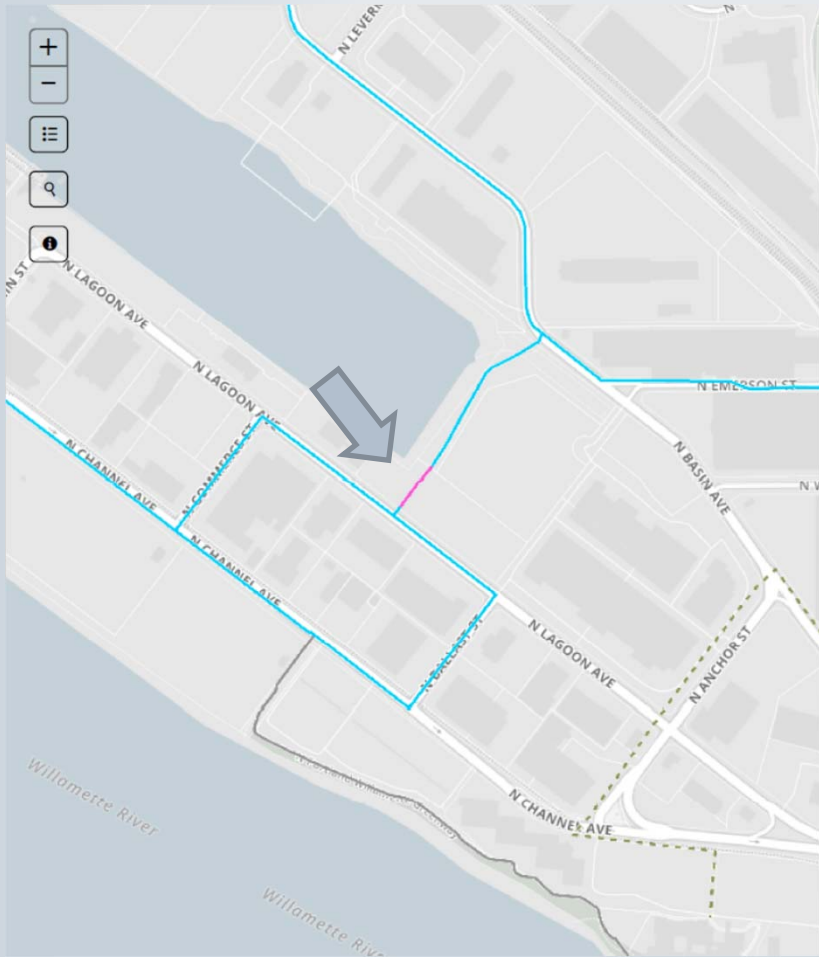
# Rich's/Angel Property



# Weston Property



# N. Lagoon Ave



# Questions and Comments?



Bureau of Planning and Sustainability  
Innovation. Collaboration. Practical Solutions.

