

SW 19th Avenue

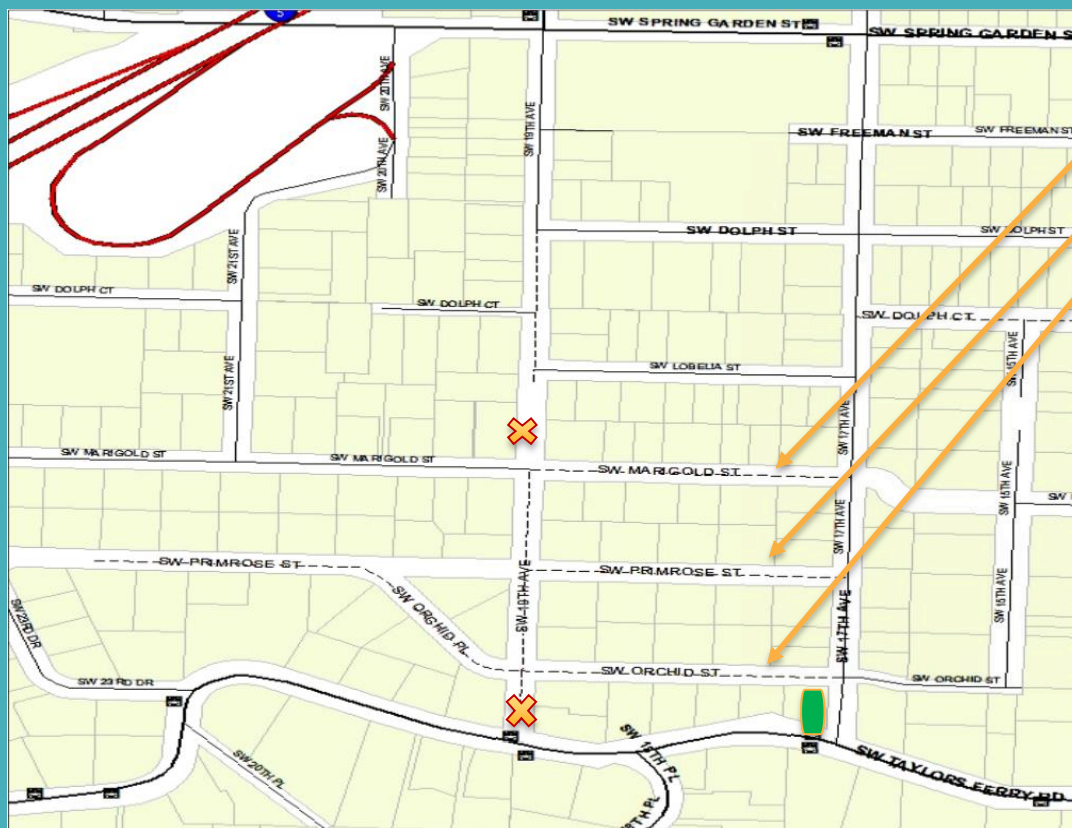
A partnership between PBOT and BES

WE KEEP PORTLAND MOVING.



PBOT
PORTLAND BUREAU OF TRANSPORTATION

SW 19th Area Map



----: Dirt & Gravel Streets

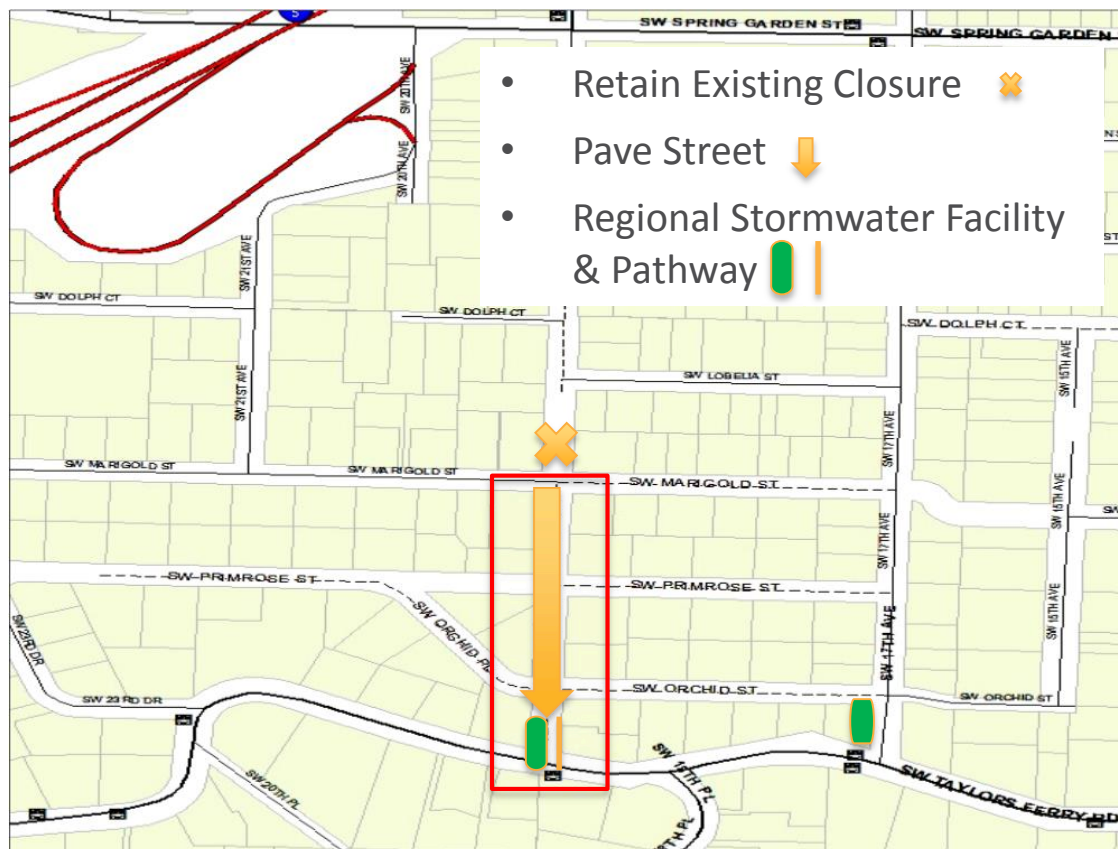
■: Existing Regional Stormwater Facility

✕: Existing Street Closure

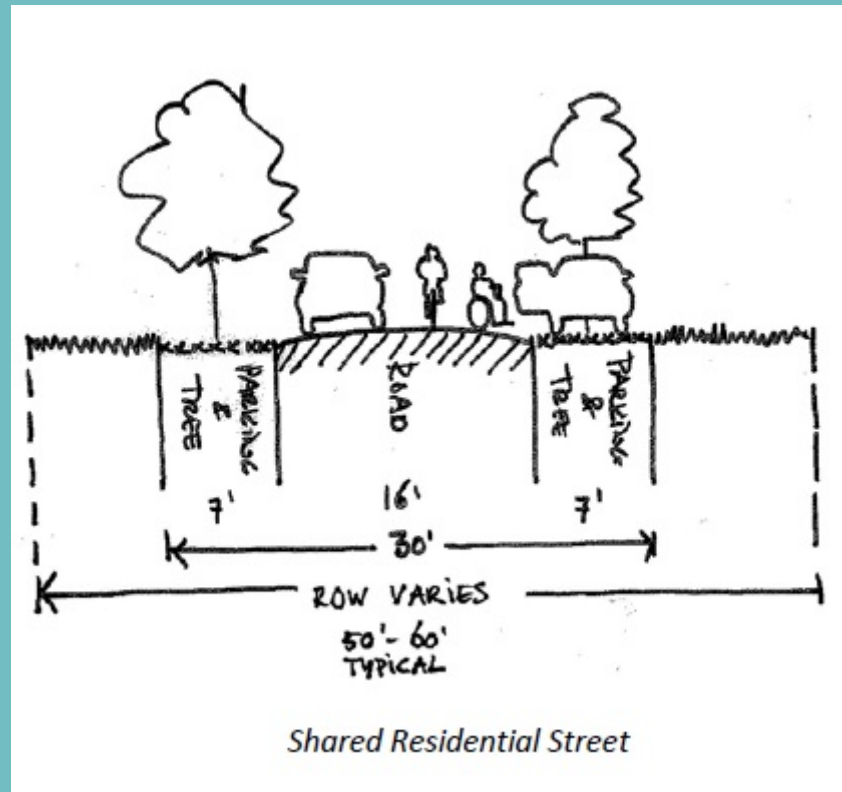
Meeting Stormwater and Transportation Needs

- Reduce sedimentation and turbidity in Tryon Creek
- Improve Safe Route to School and SW Trail
- Test design and cost assumptions of Street by Street design standard
- Proof of concept for future Neighborhood Streets projects
- Implementation project for Tryon-Stephens Headwaters Neighborhood Street Plan

SW 19th Design



Street by Street Design Standard



Existing SW 19th Avenue



Cost & Schedule

- 100% Plans Completed
- Fall 2016 – Bid Project
- Early Spring 2017 – Construction (to avoid rainy season)
- Evaluation Fall 2017

Estimate Range: \$500,000 to \$600,000 split roughly 50-50 between PBOT and BES