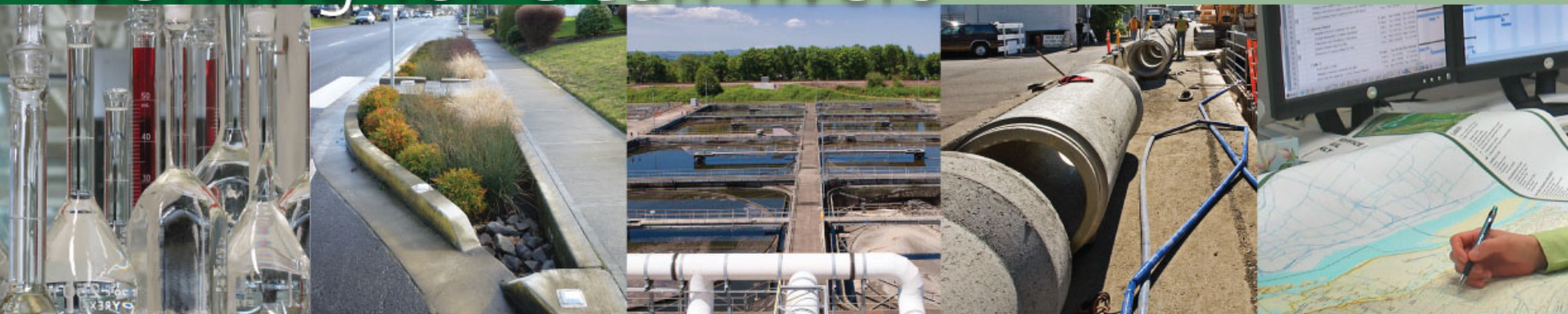


# working for clean rivers



**Authorize a Contract and Provide Payment for  
Construction of the**

## **Riverside Basin CSO Pipe Emergency Repair Council Item 806**

**Scott Gibson, PE, Principal Engineer  
Bureau of Environmental Services**

July 6, 2016

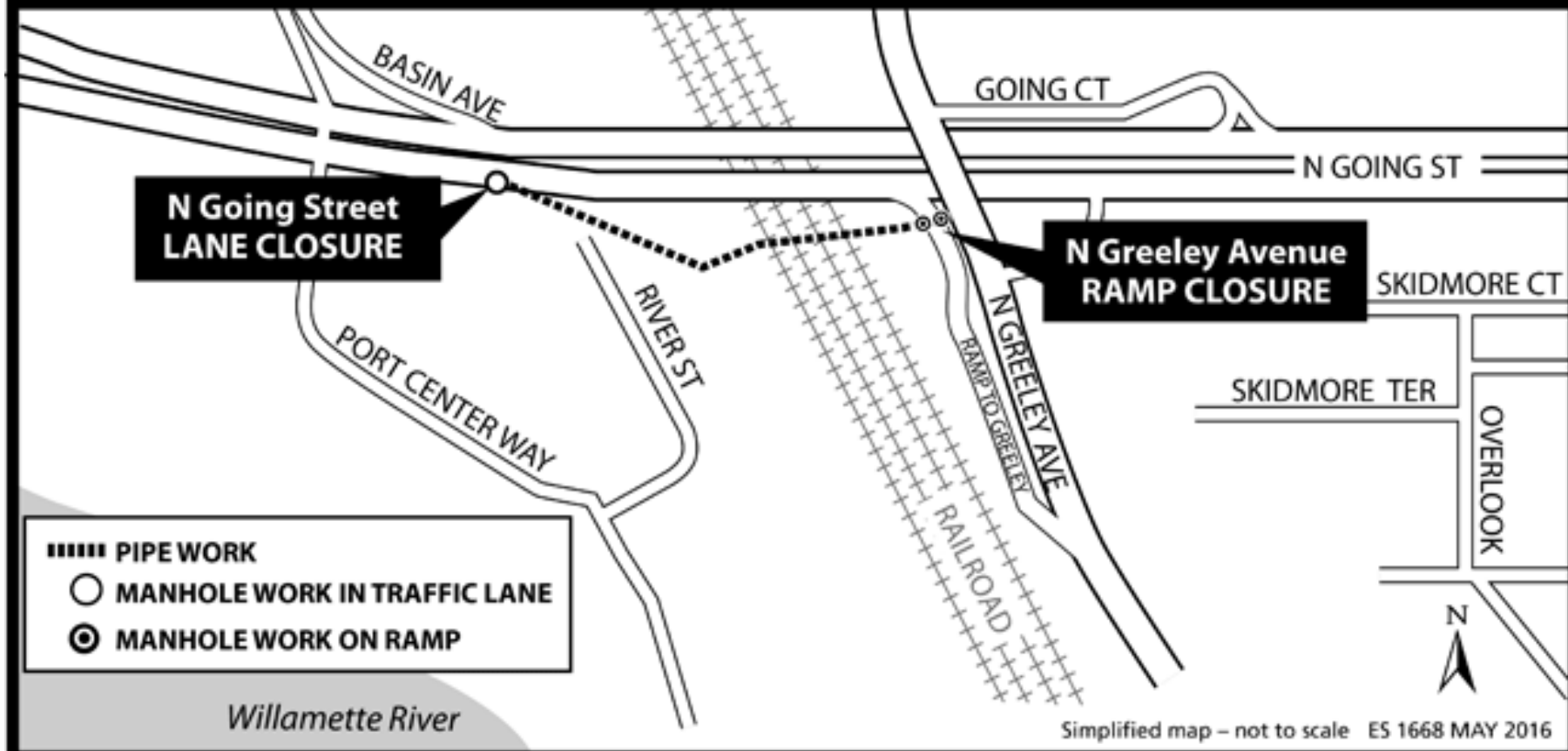


**ENVIRONMENTAL SERVICES  
CITY OF PORTLAND**

NICK FISH, COMMISSIONER  
MICHAEL JORDAN, DIRECTOR

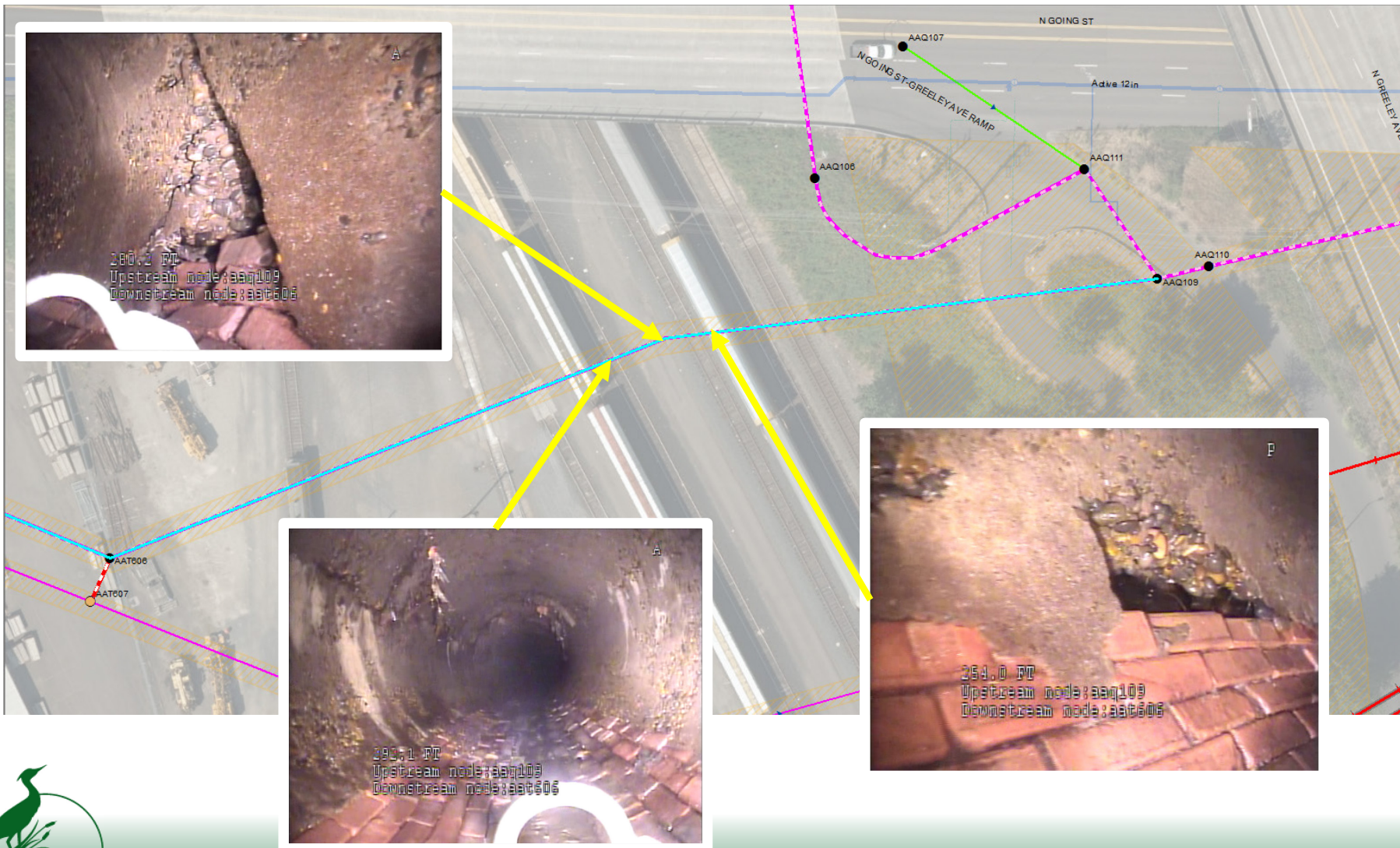
# Location

## RIVERSIDE SEWER REPAIR—TRAFFIC RESTRICTIONS



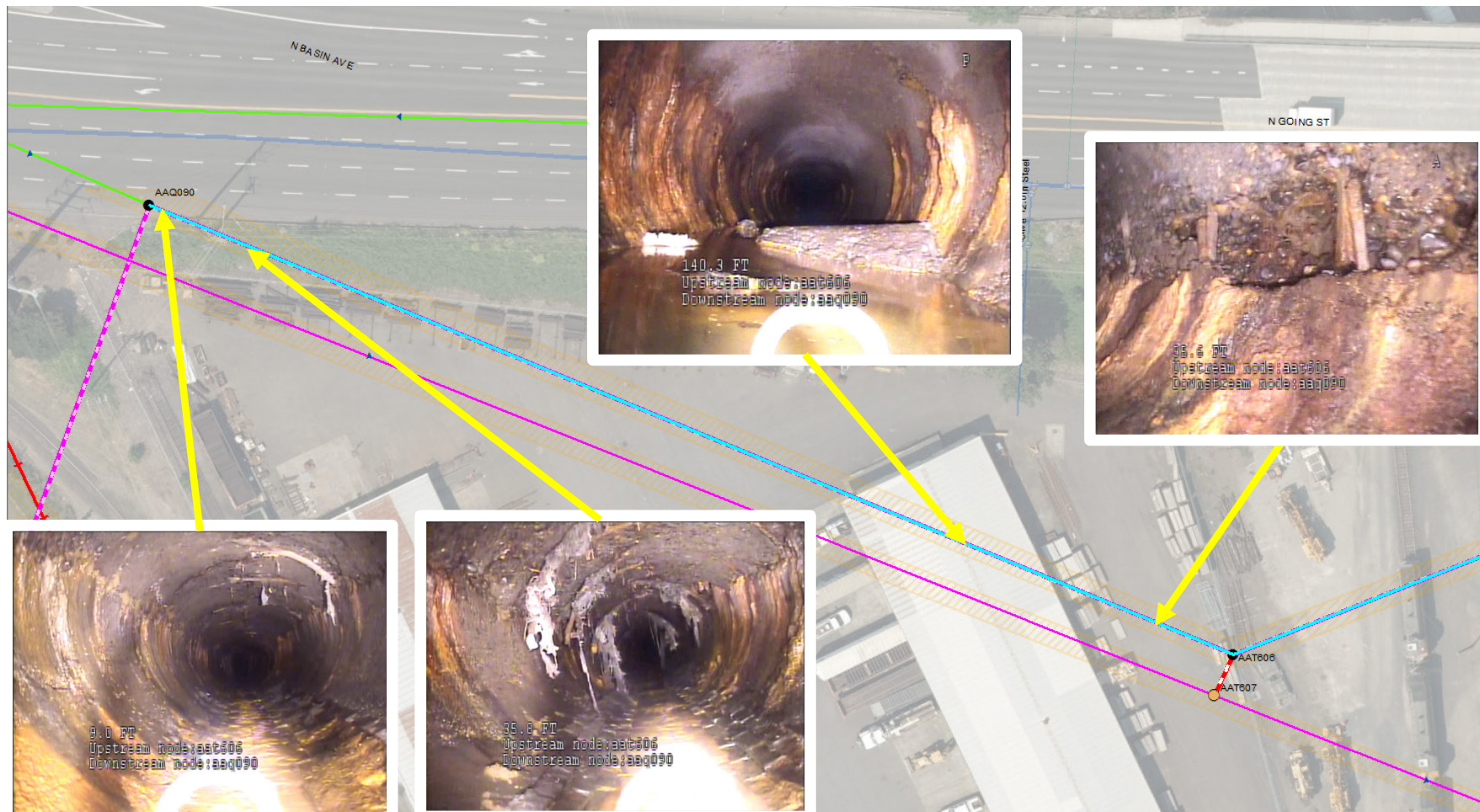


# Problem: Severely deteriorated pipe





# Problem continued



# Solution: Emergency pipe repair

---

- Laser Profiling
- Liner Manufacturing
- 72-inch manhole
- Pipe lining



# Procurement: Emergency Contract

---

- Commissioner-in-charge authorized emergency procurement
- Emergency contract procured
- Work is underway
- Seeking Council Concurrence



# Contractor

---

Oxbow Construction, Troutdale, OR

June Kalkhoven, Owner

Contract amount \$738,675

Oxbow Construction is a certified WBE.



# Budget

---

Engineer's Estimate	\$685,000
Contract Amount	\$738,675

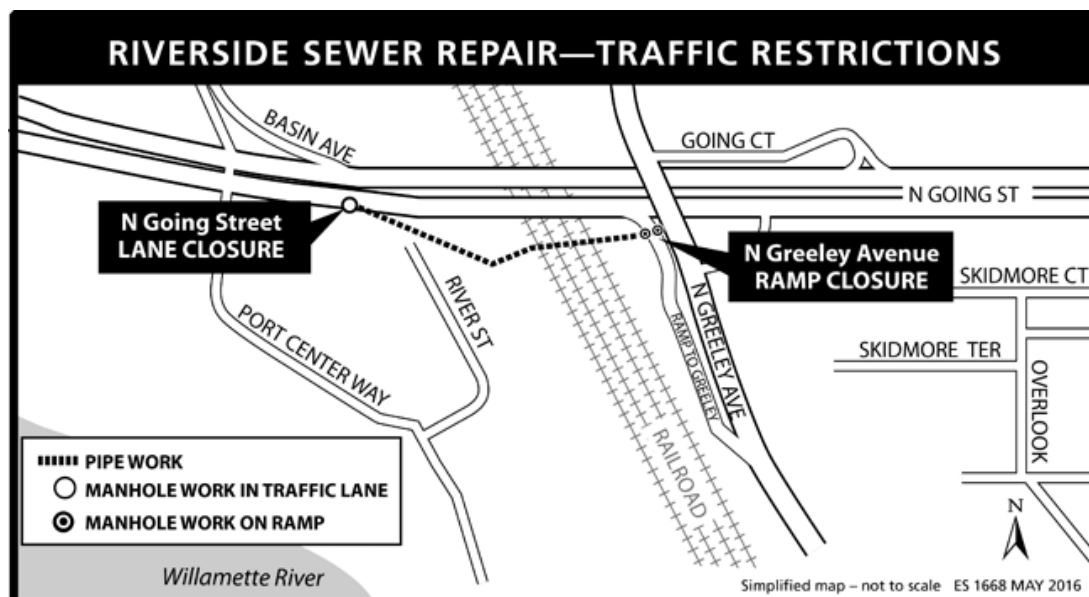
Project will be executed under the Large Diameter Sewer Rehabilitation Program.





# Public Outreach

- Residents
- Businesses
- Overlook  
Neighborhood  
Association
- Swan Island Business  
Association



# Questions?

---

