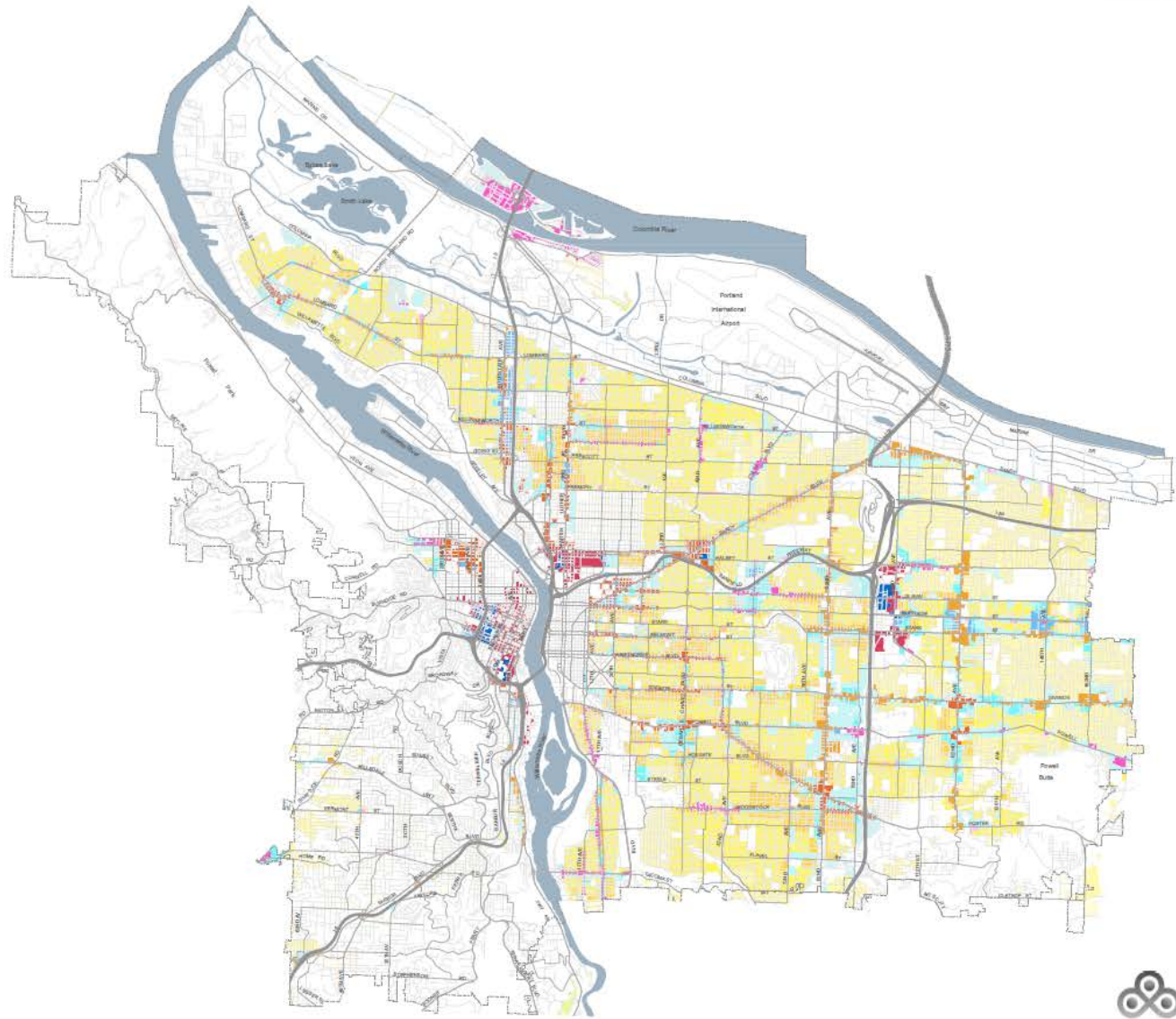


EXHIBIT C

Inventory Map of Buildable Residential Lands and Estimate of Remaining Housing Capacity

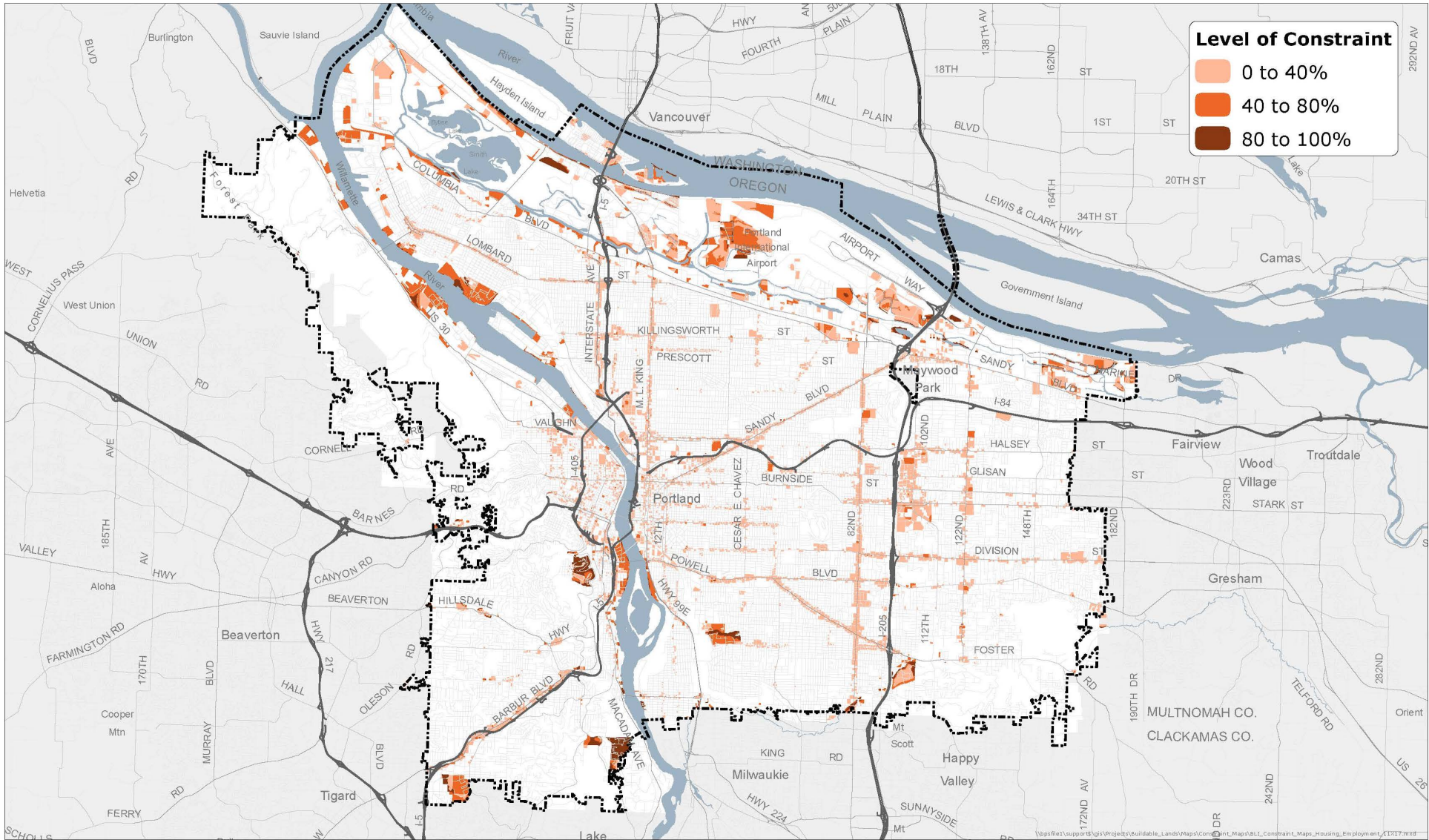
Buildable Lands Inventory



- ◆ Single-Dwelling 20,000
- ◆ Single-Dwelling 10,000
- ◆ Single-Dwelling 7,000
- ◆ Single-Dwelling 5,000
- ◆ Single-Dwelling 2,500
- ◆ Multi-Dwelling 3,000
- ◆ Multi-Dwelling 2,000
- ◆ Multi-Dwelling 1,000
- ◆ High Density Multi-Dwelling
- ◆ Central Residential
- ◆ Central Commercial
- ◆ Mixed Use - Urban Center
- ◆ Mixed Use - Civic Corridor
- ◆ Mixed Use - Neighborhood
- ◆ Mixed Use - Dispersed

EXHIBIT D

Inventory Map of Buildable Employment Lands and Estimate of Remaining Employment
Capacity



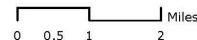
Buildable Lands Inventory | Employment Buildable Lands

City of Portland | Bureau of Planning and Sustainability | Geographic Information System

This work was supported, in part, by a grant from the Oregon Department of Land Conservation and Development.

The information on the map was derived from digital data bases on the City of Portland, Bureau of Planning and Sustainability GIS. Care was taken in the creation of this map but it is provided "as is". The City of Portland cannot accept any responsibility for error, omissions, or positional accuracy, and therefore, there are no warranties which accompany this product. However, notification of any errors will be appreciated.

March 13, 2015



Bureau of Planning and Sustainability
Innovation. Collaboration. Practical Solutions.

