

# working for clean rivers



## New PTE Contract for Community Tree Education, Planting, and Establishment (RFP #00000221)



ENVIRONMENTAL SERVICES  
CITY OF PORTLAND

NICK FISH, COMMISSIONER  
JAMES HAGERMAN, INTERIM DIRECTOR

Environmental Services Tree Program

June 8, 2016

# Environmental Services and Green Infrastructure

BES uses green infrastructure, including trees, to manage stormwater sustainably in service of clean rivers, healthy watersheds, and **equitable**, sustainable communities.

BES enhances the urban forest canopy to **provide tree benefits more equitably** to meet the needs of diverse and traditionally underserved communities, to **manage stormwater sustainably**, and to **protect human health by reducing urban heat island**.



# Environmental Services and Trees

Environmental Services activities are regulated by federal, state, and local laws

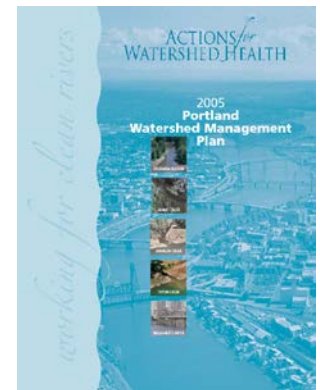
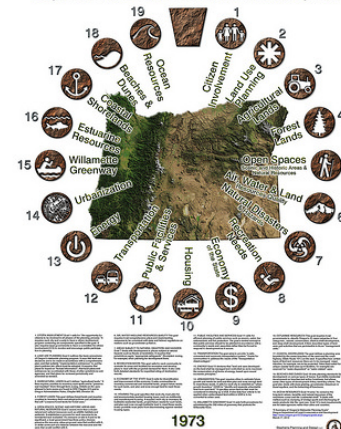
BES has planted trees since 1995 for compliance with the Clean Water Act

We report on accomplishments from outreach/education and planting programs for our NPDES permit



## Oregon Statewide Planning Goals

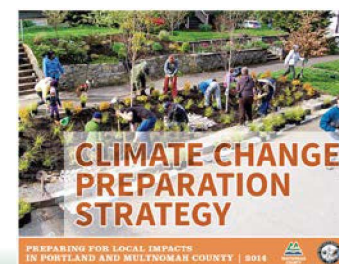
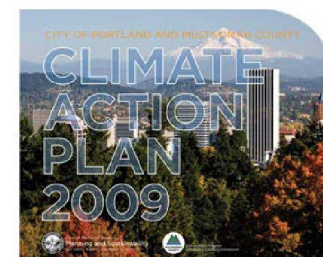
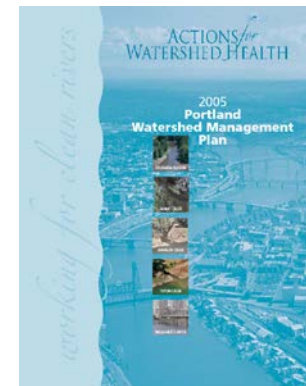
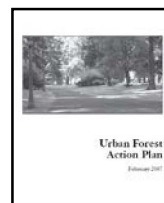
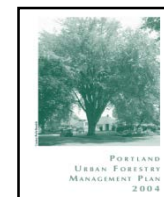
Department of Land Conservation and Development





# Trees Meet Multiple Goals

Urban Forestry Management Plan  
 Portland Watershed Management Plan  
 Urban Forest Action Plan  
 Climate Action Plan  
 Portland Plan  
 Climate Change Preparation Strategy  
 Central City 2035 Plan  
 Comprehensive Plan



# Environmental Services Tree Program

**43,276 trees** planted in the city since FY2008-2009.

**75% (32,397 trees)** through current contract with Friends of Trees.



# Consultant Selection

- A competitive solicitation (RFP #00000221) was conducted in accordance with PCC 5.68, and the evaluation committee selected Friends of Trees.
- Friends of Trees:
  - an established and experienced non-profit
  - builds community in the City by coordinating community tree planting and tree care events
  - has planted over 30,000 trees in partnership with the City over the past eight years.





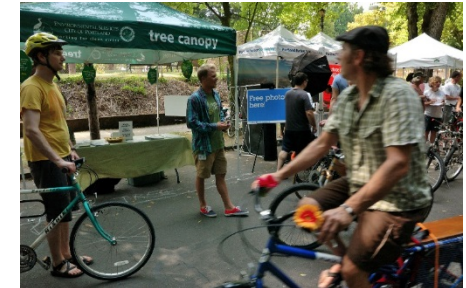
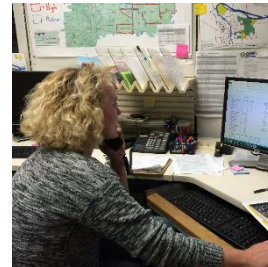
# Contract Cost and Funding

- The established cost is \$5,882,216 for a five-and-a-half year contract (M/W/ESB subcontractor participation of \$70,975 or 1.2% of the total contract amount)
- The cost estimate level of confidence rating is optimal
- Funded from the General Fund (80%) and the Sewer System Operating Fund (20%)



# Contract Scope

- 10,940\* trees planted and monitored
- 7,000 trees structurally pruned
- Outreach and education to achieve planting and pruning goals
- Develop and strengthen relationships with other community building organizations to more effectively reach vulnerable populations
- GOAL: 75% service delivery in historically underserved communities



*\*may increase by 100 trees*







# Questions?

