

## EX ZONE CHARACTERISTIC STATEMENT

### Central Employment.

This zone implements the Central Employment map designation of the Comprehensive Plan. The zone allows mixed-uses and is intended for areas in the center of the City that have predominantly industrial type development. The intent of the zone is to allow industrial and commercial uses which need a central location. Residential uses are allowed, but are not intended to predominate or set development standards for other uses in the area. The development standards are intended to allow new development which is similar in character to existing development.

## CM3 ZONE CHARACTERISTIC STATEMENT

The central commercial zone is intended to provide for commercial and mixed use development within Portland's most urban and intense areas, specifically the Central City and the Gateway Regional Center areas. A broad range of uses are allowed to reflect Portland's role as a commercial, cultural, residential, and governmental center. Development is intended to be very intense with high building coverage, large buildings, and buildings placed close together. Development is intended to be pedestrian oriented with a strong emphasis on a safe and attractive streetscape.



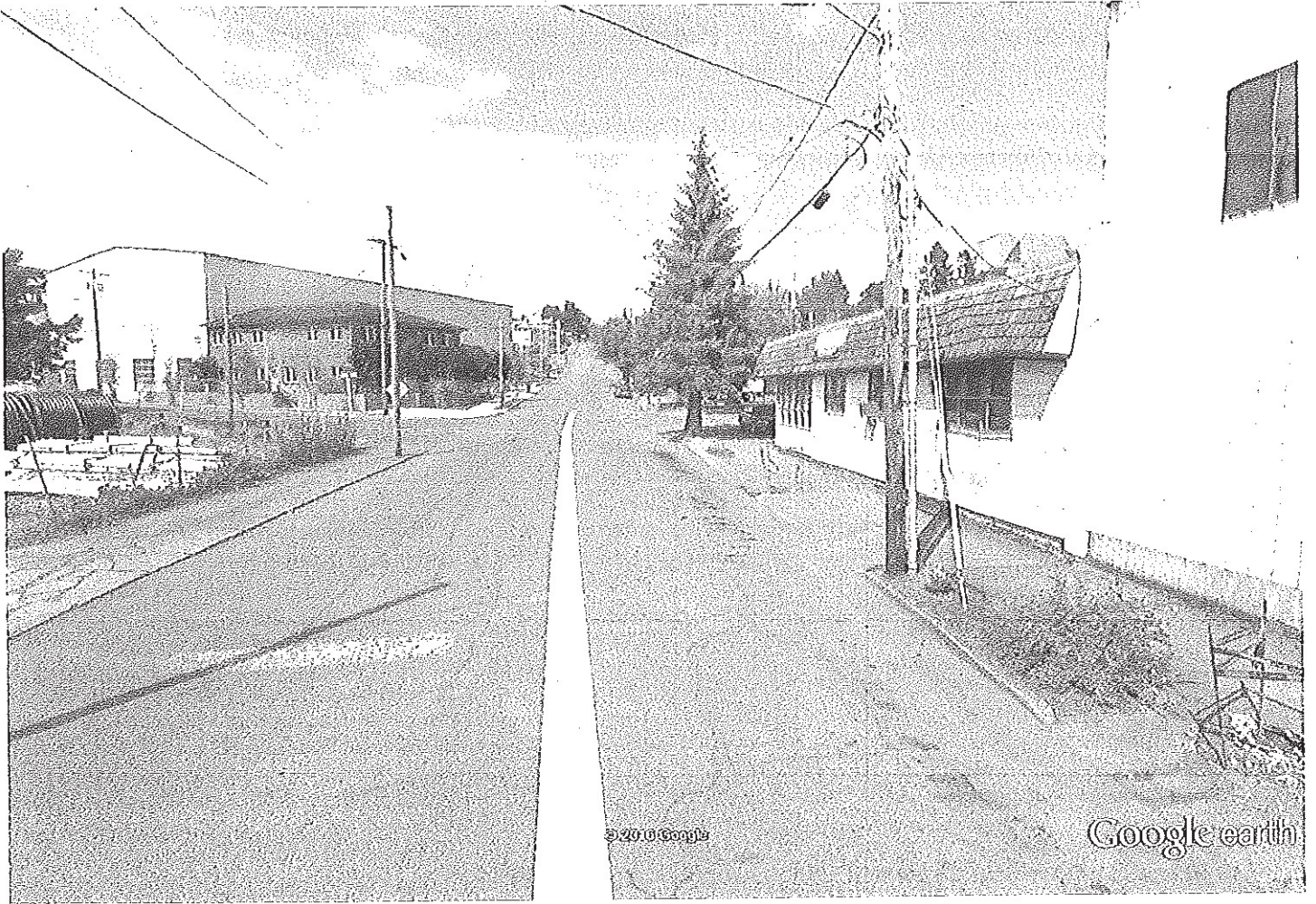
Google earth

700 ft



Google earth





Google earth

