

# Transportation SDC Grant & Safety Update

Outer Powell, SW Barbur, Sullivan's Crossing, David Douglas SR2S

WE KEEP PORTLAND MOVING.



**PBOT**  
PORTLAND BUREAU OF TRANSPORTATION

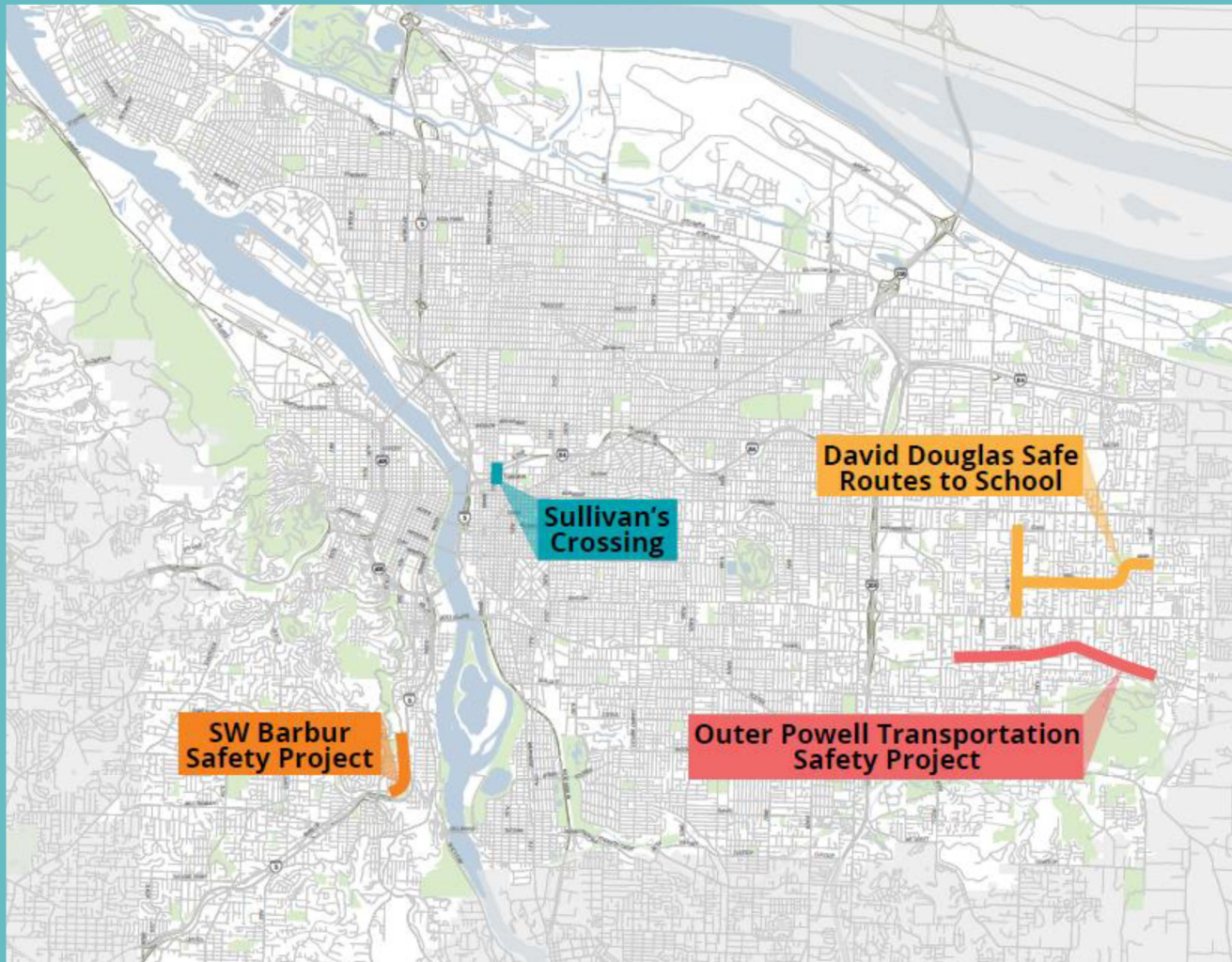
# TSDC Grant & Safety List Update: Why Now?

- Last SDC update was in 2007
- Full list update coming in 2017 - immediate opportunities
  - Strong community support for effectively using existing resources to address critical safety/operating needs
  - Existing SDC \$ unusable w/out partnership funding that pays for non-SDC eligible costs
  - Upcoming grant deadlines for TIGER and Regional Flex Funds – grants require match
  - Immediate safety needs dictate that we take advantage of all opportunities and leverage SDCs whenever possible

# TSDC Grant & Safety List Update Proposal

- **Add 4 projects to the current Transportation SDC list**
  - **Outer Powell:** one of the highest East Portland priority projects
  - **David Douglas Safe Routes to School:** a critical East Portland school safety project
  - **Sullivan's Crossing:** use revenue from rapid development in Lloyd District to minimize regional congestion and improve safety
  - **SW Barbur:** one of the highest priority SW safety projects
- Use existing SDC balances, within modal categories and geographic regions, to ensure no changes in SDC rates and consistency with SDC program direction

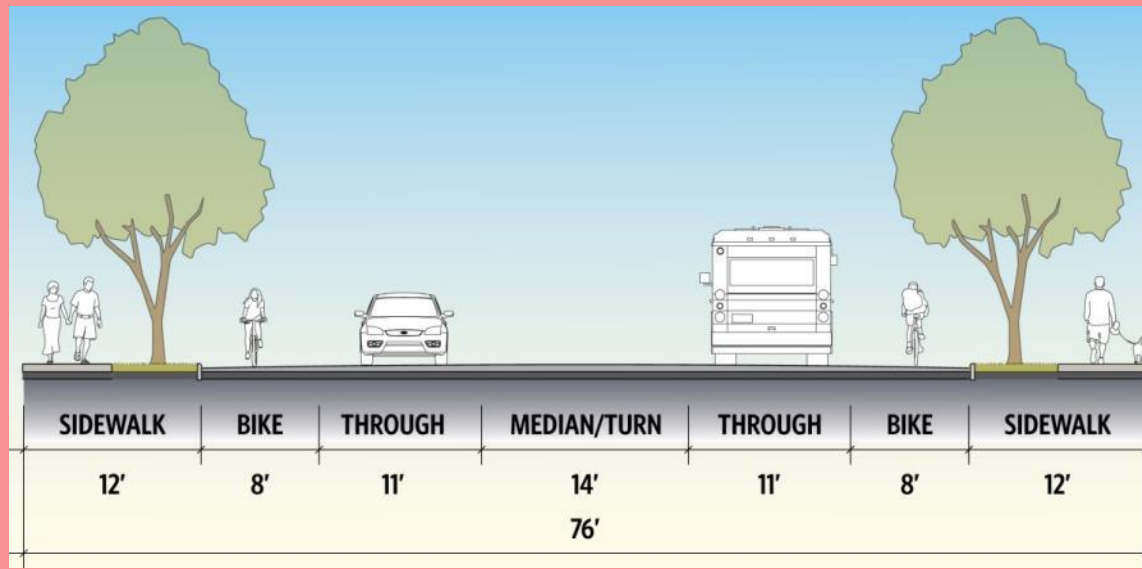
# TSDC Update Project Locations



# Outer Powell Transportation Safety Project

**Project Goal:** To reduce the frequency and severity of collisions and potential conflicts between vehicles, pedestrians, transit and bicyclists, while providing a continuous through facility for safe travel for all modes. SE Powell Blvd. from SE 116<sup>th</sup> and SE 162<sup>nd</sup>.

The Outer Powell Transportation Safety Project Typical Cross-Section



# Outer Powell Transportation Safety Project

- **Cost Estimate:** \$50 M
- **Current Opportunity:** TIGER federal grant.  
PBOT is co-applicant with ODOT for a TIGER Outer Powell application due April 29<sup>th</sup>. Support Resolution today.
- **Potential Match Funding Sources:** TIGER federal grant, State Legislature
- **Projected SDC contribution:** \$9 M – 11 M
- **Savings from SDC projects:**
  - SE Barbara Welch Road
  - SE Foster Road 136<sup>th</sup> - Jenne

# David Douglas Safe Routes to School

**Project Goal:** Create safer walking and biking conditions to get to school by constructing missing sidewalks on Mill between 130<sup>th</sup> and 148<sup>th</sup> and on 130<sup>th</sup> from Stark to Division and bicycle facilities on SE Mill/Main between 130<sup>th</sup> and 162<sup>nd</sup>.



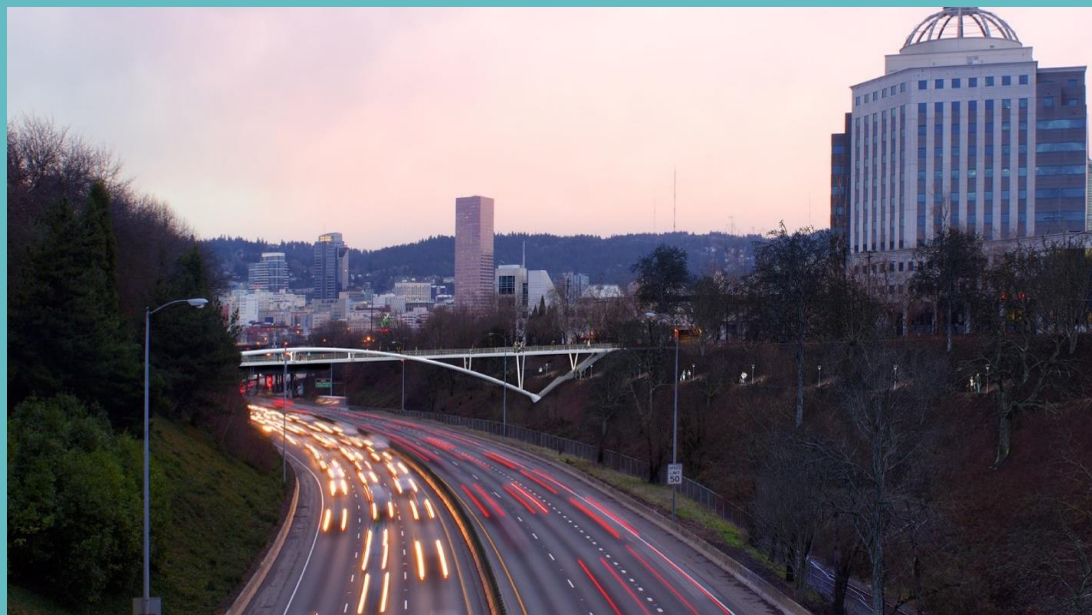
# David Douglas Safe Routes to School

- **Cost estimate:** \$8 M
- **Current opportunity:** Regional Flex Funds. Safe Routes to School projects are high priority for RFF. With sufficient match, this can be one of Portland's most competitive projects.
- **Potential Match Funding Sources:** Regional Flex Funds
- **Projected SDC contribution:** \$2 M - \$3.7 M
- **Savings from SDC projects:**
  - Gateway Regional Center



# Sullivan's Crossing

**Project Goal:** Build a new active transportation bridge across I-84 at 7<sup>th</sup> Ave connecting the Lloyd District to the Central Eastside. Provides a critical bike/ped connection to thousands of new Lloyd residents and employees, as well as to those passing through the area on a key north-south route. Provides facilities that encourage non-auto modes in this already congested and centrally located area of the City. Opportunity for zero emission freight and a lifeline bridge in a seismic event.



# Sullivan's Crossing

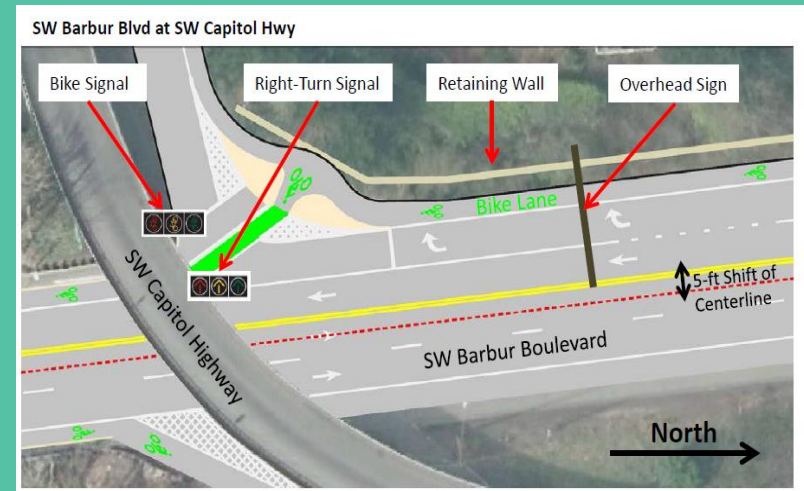
- **Cost estimate:** \$13 M
- **Current opportunity:** Rapid development in Lloyd District is generating revenue & potentially negative regional traffic impacts w/out immediate investments. Project design will minimize conflicts between freight and active transportation, provide a lifeline in seismic event, and is supported by both Lloyd District and CEIC.
- **Potential Match Funding Sources:** Regional Flex Funds, Portland Development Commission, Adjacent Developers
- **Projected SDC contribution:** \$11 M
- **Savings from SDC projects:**
  - Burnside/Couch, East
  - Burnside/Couch, West

# SW Barbur Safety Project

**Project Goal:** Improve safety on SW Barbur Blvd, one of Portland's High Crash Corridors. Focus on the portion of Barbur between SW Miles and Capitol Highway to reduce conflicts between autos and bikes on this important route from SW into Downtown Portland.



Photo credit Bike Portland



# SW Barbur Safety Project

- **Cost estimate:** \$3.95M
- **Current opportunity:** ODOT has recently completed a much anticipated Road Safety Audit and implementation plan. Implementation plan is not fully funded. SDCs can help to move these critical safety improvements forward without further delay.
- **Potential Match Funding Sources:** Oregon Department of Transportation
- **Projected SDC contribution:** \$1.5 M to 2.2 M
- **Savings from SDC projects:**
  - Burnside/Couch West

# TSDC Grant & Safety List Update Proposal

- **Add 4 projects to the current Transportation SDC list**
  - **Outer Powell:** one of the highest East Portland priority projects
  - **David Douglas Safe Routes to School:** a critical East Portland school safety project
  - **Sullivan's Crossing:** use revenue from rapid development in Lloyd District to minimize regional congestion and improve safety
  - **SW Barbur:** one of the highest priority SW safety projects
- Use existing SDC balances, within modal categories and geographic regions, to ensure no changes in SDC rates and consistency with SDC program direction