

# Multnomah County Central Courthouse Project

Planning and Sustainability Commission: April 26, 2016

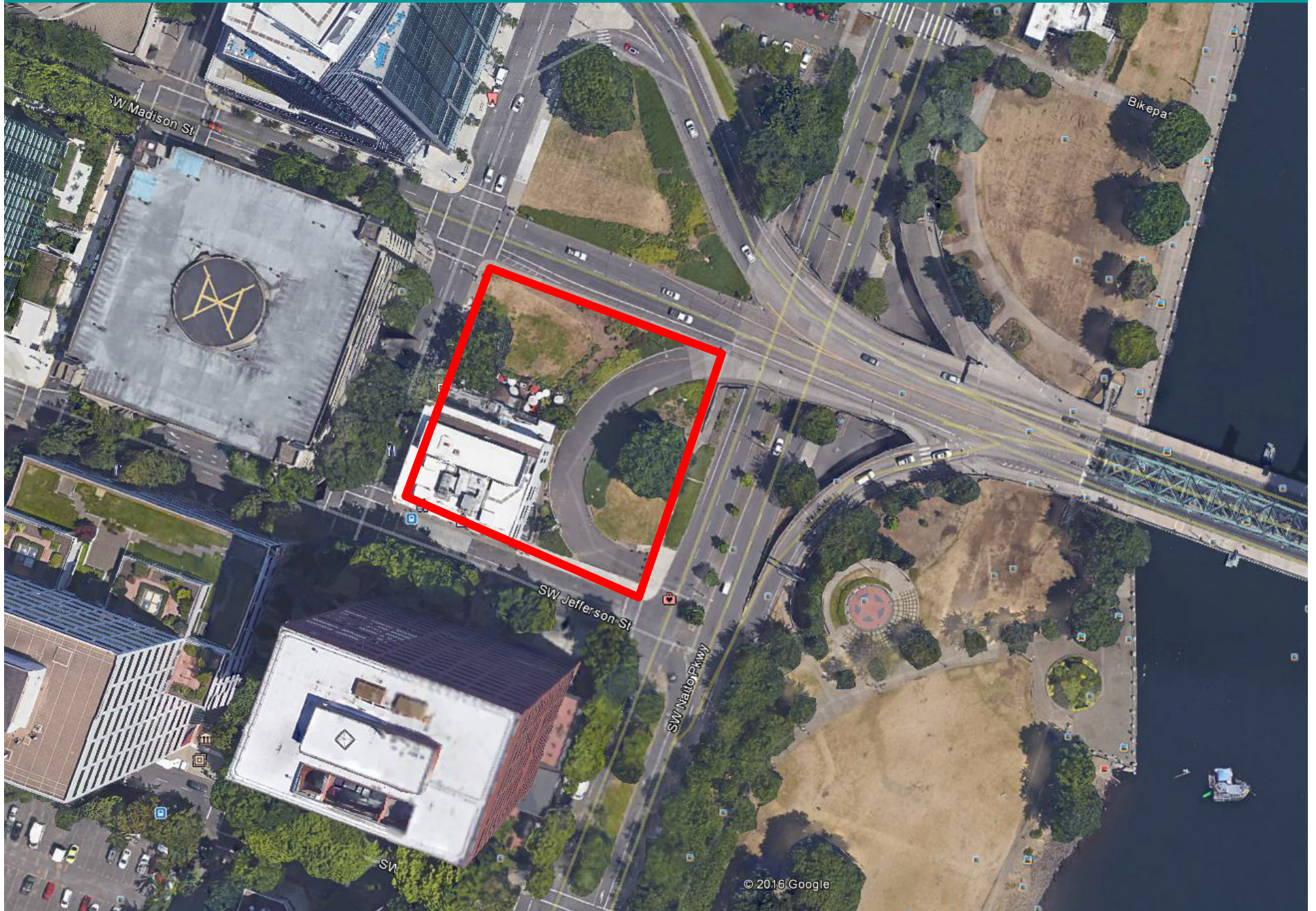


Bureau of Planning and Sustainability  
Innovation. Collaboration. Practical Solutions.



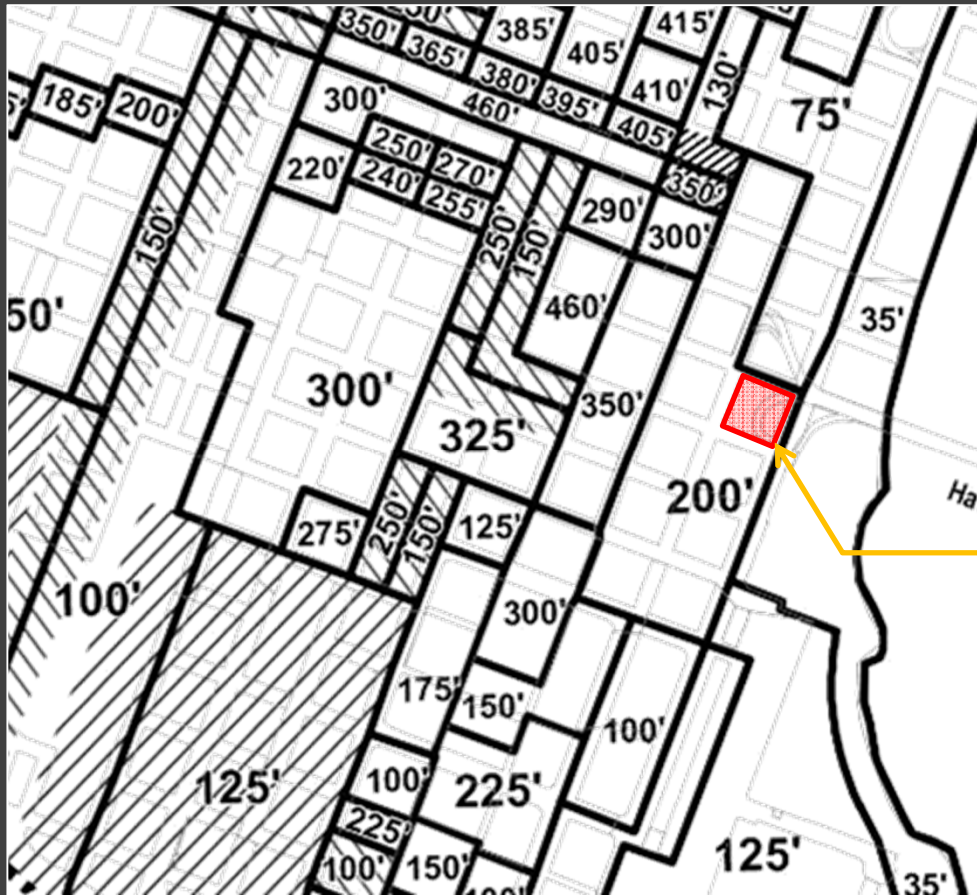


# Block 8: Proposed Central Courthouse Site





# Existing Height: Map 510-3 Central City Plan District



Block 8: Site

# West Quadrant Plan





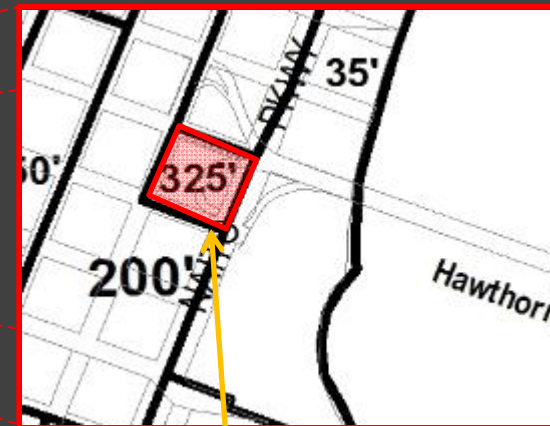
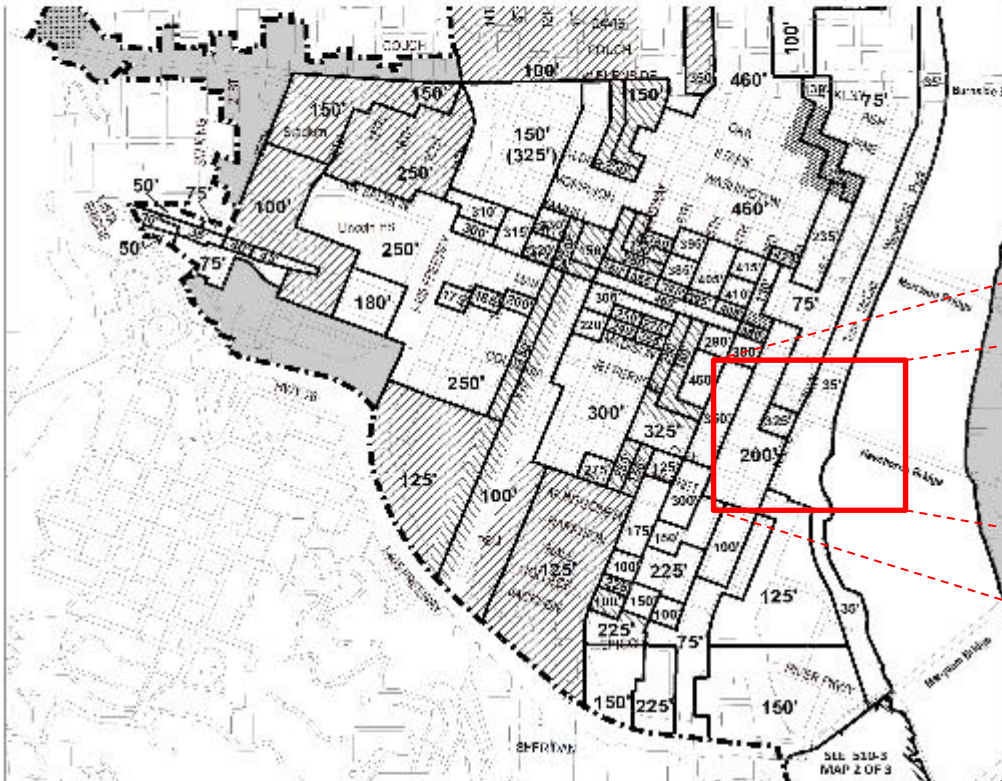
# Proposed Immediate Height Amendment

## Maximum Heights

## Map 510-3

Map 3 of 3

Map Revised xxxx, 201x

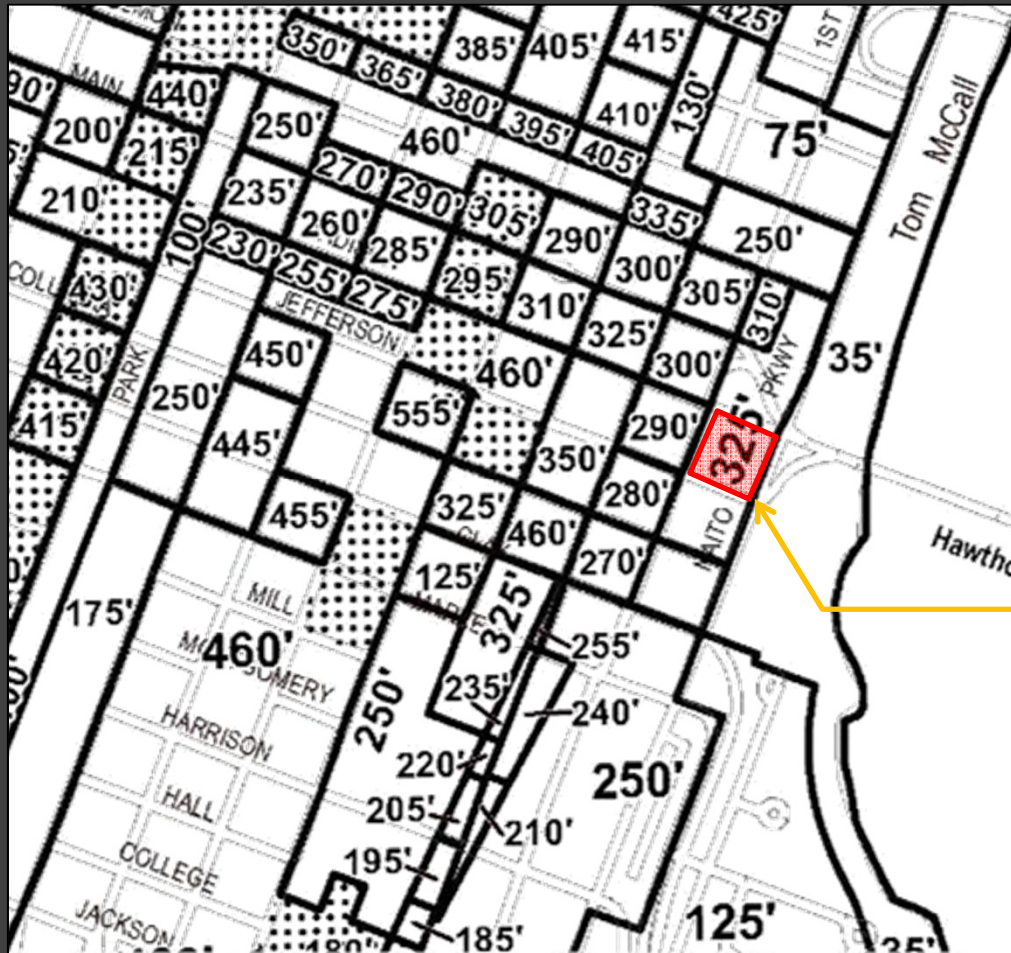


Block 8: Site

Legend	<ul style="list-style-type: none"> <li>Maximum building height</li> <li>Allowable building height when rezoned to EX or CX</li> <li>Allowable height for residential (R, S, I, O, P)</li> </ul>	<ul style="list-style-type: none"> <li>Areas where maximum height is determined by base zone</li> <li>Area eligible for general and housing height bonus</li> <li>Area eligible for housing height bonus only</li> </ul>	<ul style="list-style-type: none"> <li>Area eligible for Open Space performance standards</li> <li>Area eligible for historic step-down exception</li> <li>Maximum height limit of 75' for first 125 feet from top of bank</li> </ul>
--------	---	--	---

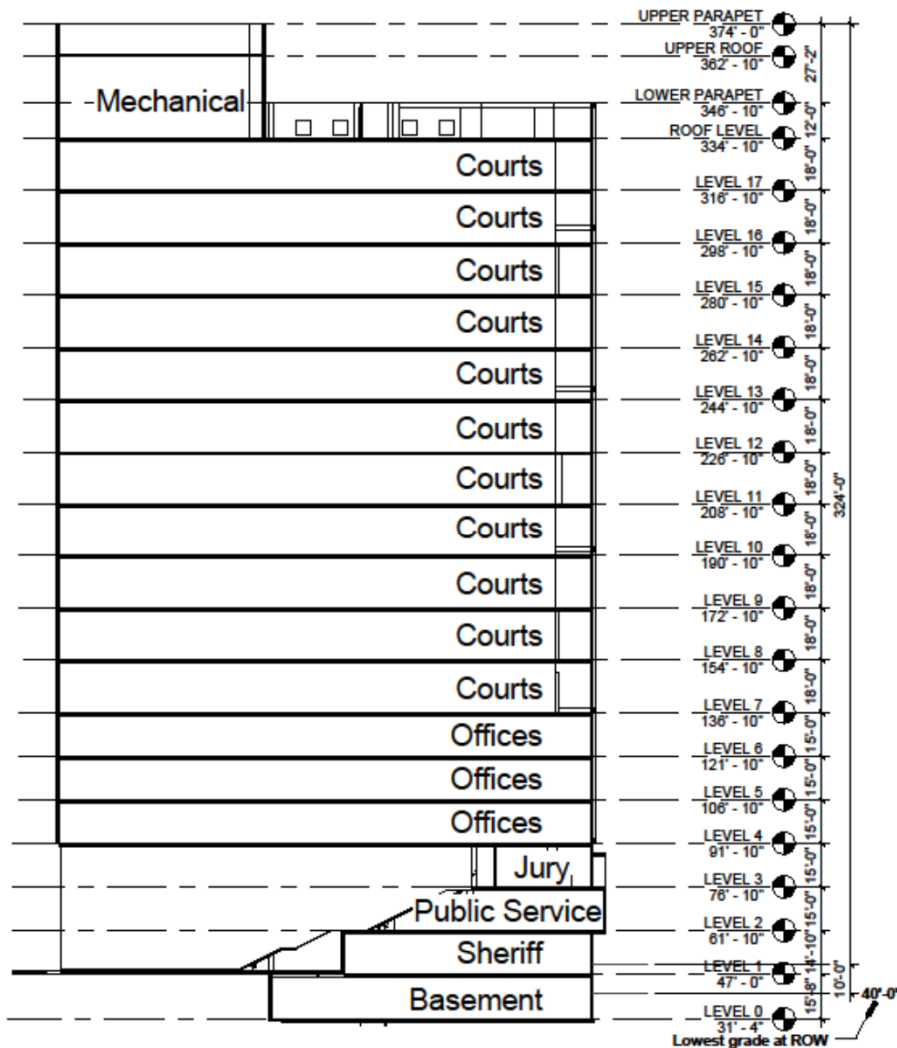
<ul style="list-style-type: none"> <li>Central City Plan District boundary</li> <li>Maximum heights area boundary</li> <li>Boundary of area when building heights are tied to rezoning to EX or CX</li> </ul>	<ul style="list-style-type: none"> <li>Proposed right of way</li> <li>Proposed accessways</li> </ul>	<p>Scale in Feet</p> <p>0 500 1,000</p> <p>Bureau of Planning and Sustainability Portland, Oregon</p>
---	--	---

# Proposed CC2035 Height Amendment: Discussion Draft



Block 8: Site

# MCCH: Programing – Floor Area and Height



Proposed Floor Area: 460,000 sq. ft.

Floor to Ceiling Heights: 18'

Proposed Floors: 17

Proposed Maximum Height: 324'

FAR Building Section

Multnomah County Central Courthouse

SRG PARTNERSHIP INC | CGLR | C | GREENE



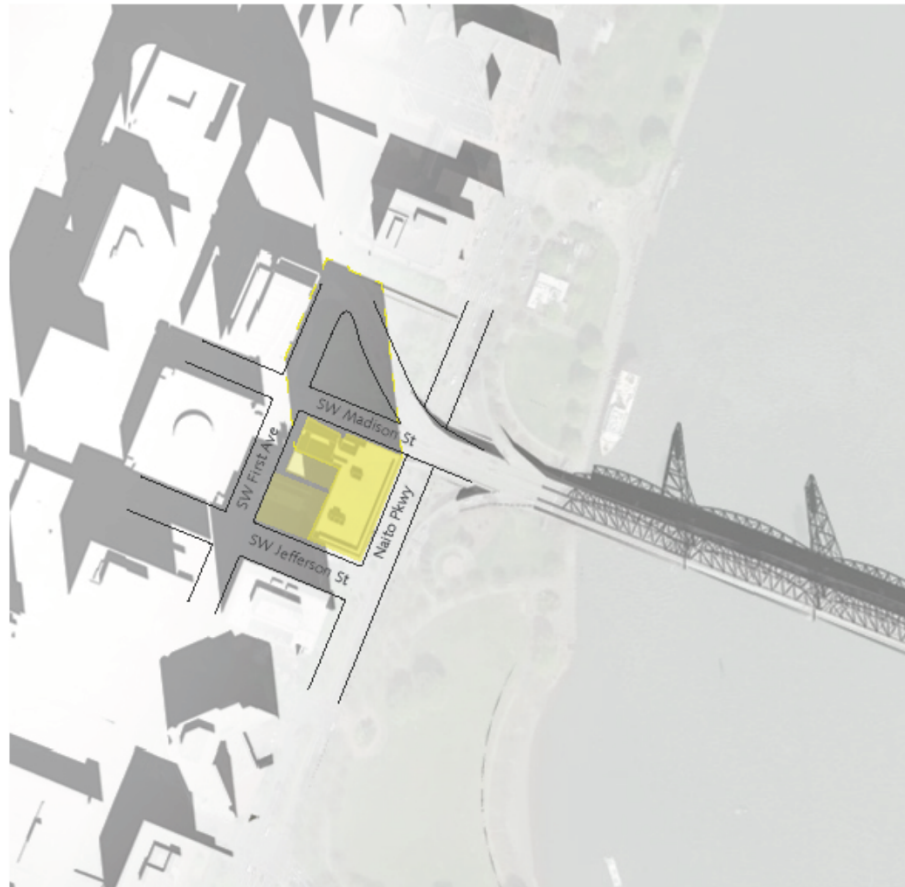
# MCCH: Shadow Analysis



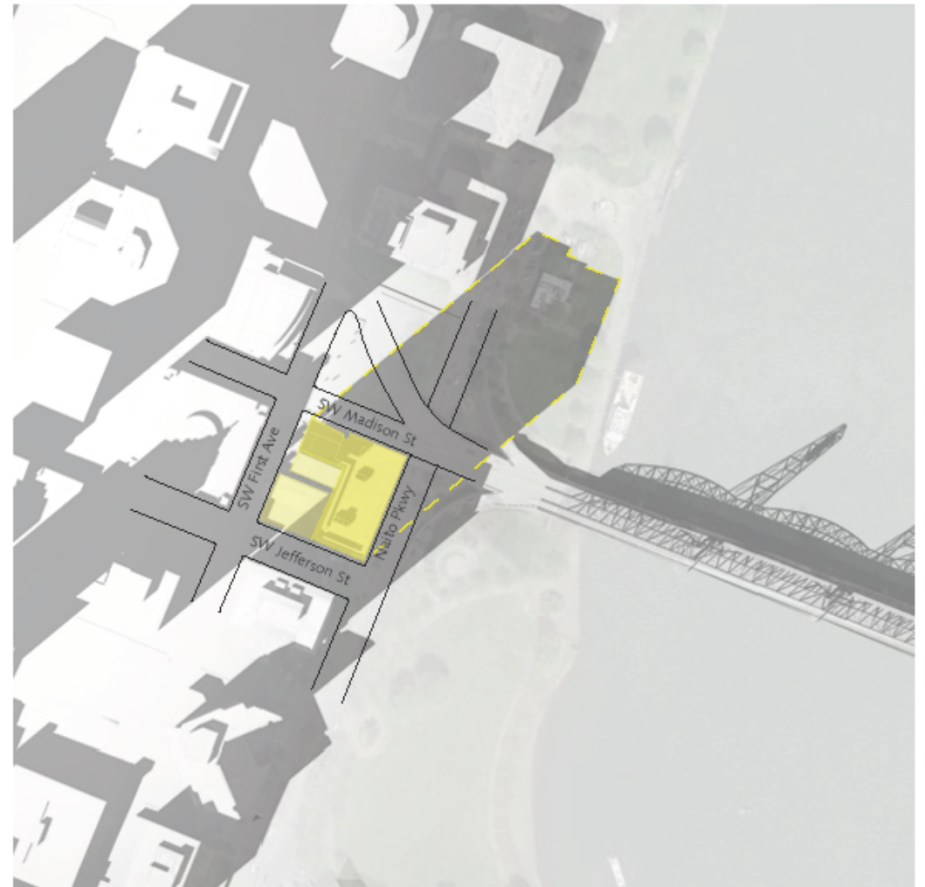
Block 8: April 21, 3:00 PM



# MCCH: Shadow Analysis



March 21st at Noon



March 21st at 3pm

Sun Studies

Multnomah County Central Courthouse  
SRG PARTNERSHIP INC | CGLRICCI GREENE

## Staff Recommendation



**Recommend Height Amendment**  
from 200 feet to maximum height of  
325 feet.

Proposal consistent with PSC and  
Council Height Maps from West  
Quadrant Plan

---

### **Next Steps:**

Forward PSC Recommendation to City Council

Break ground on new development 1<sup>st</sup> Quarter 2017