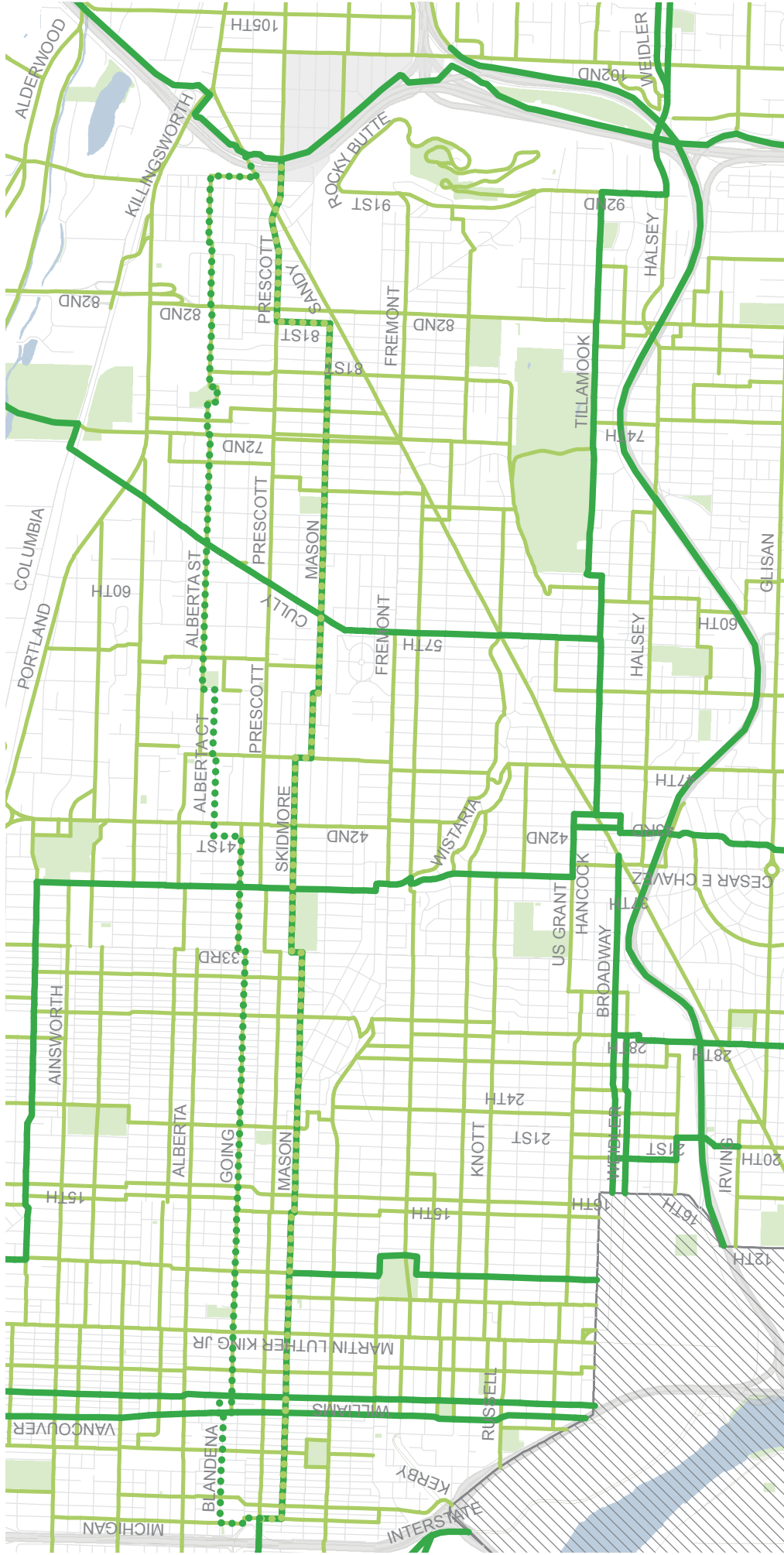


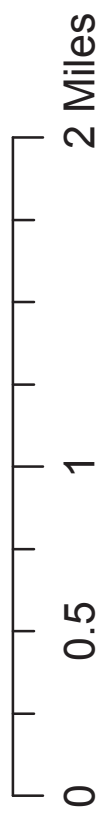
Bicycle Classification Map – “Major” Amendments

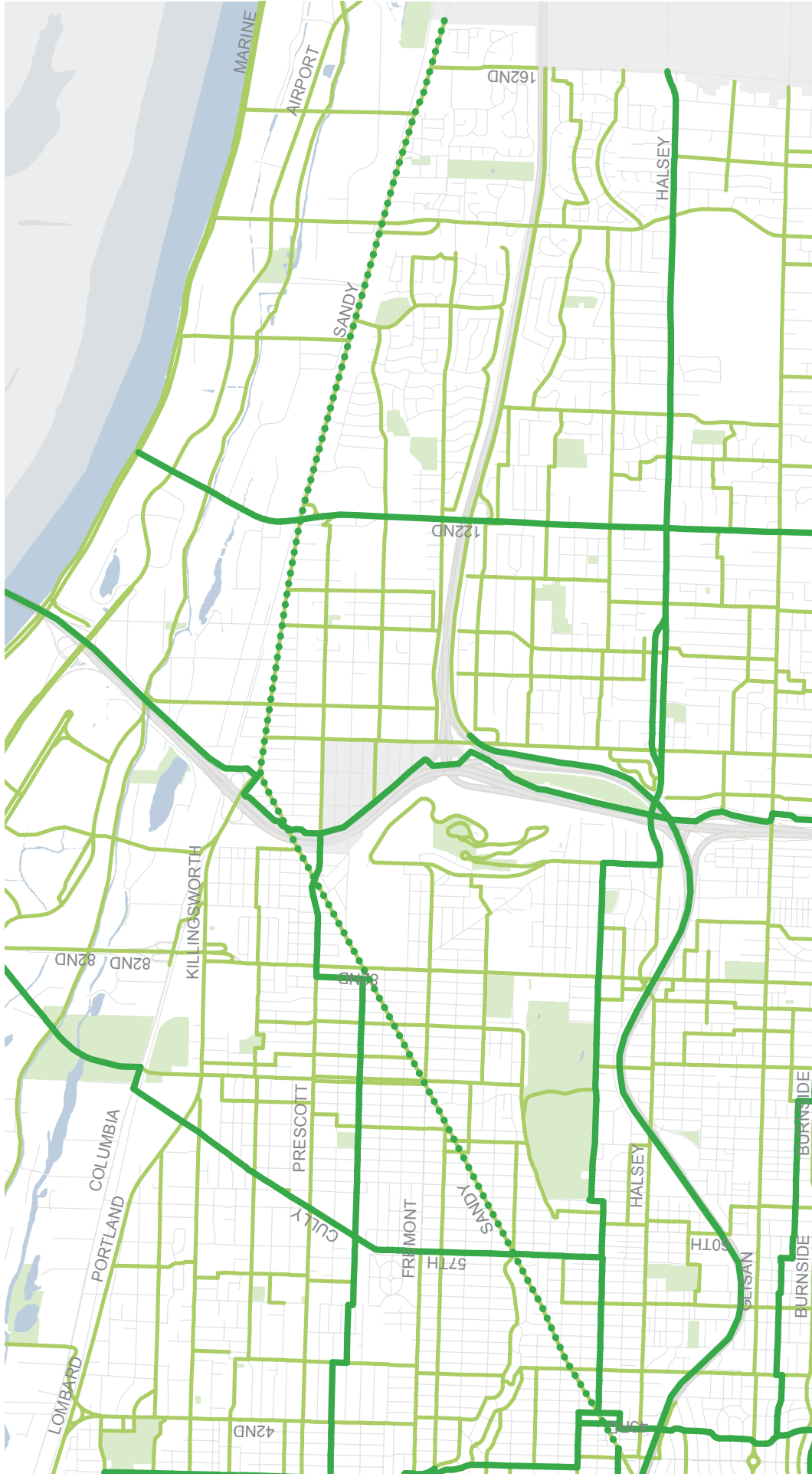
Map ID #	Description	Explanation
1	NE Going/Alberta: Upgrade to Major City Bikeway and downgrade parallel Mason/Skidmore route to City Bikeway	Going/Alberta is operating as a Major City Bikeway already and would provide better connection to I-205 Path with extension to the east.
2	NE Sandy Blvd (Hollywood to City Limits): Upgrade to Major City Bikeway	Provides a more direct route than alternatives. Consistent with RATP.
3	E Burnside St (41st - 71st): Upgrade to Major City Bikeway and downgrade parallel Davis/Everett route to City Bikeway	Provides a more direct route than alternatives. Consistent with RATP.
4	SE Foster Rd (Powell - Lents): Upgrade to Major City Bikeway	Provides a more direct route than alternatives. Consistent with RATP.



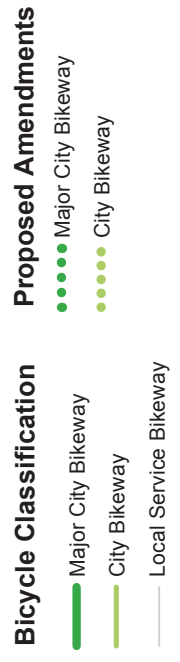
Major Bike Amendments Map ID #1

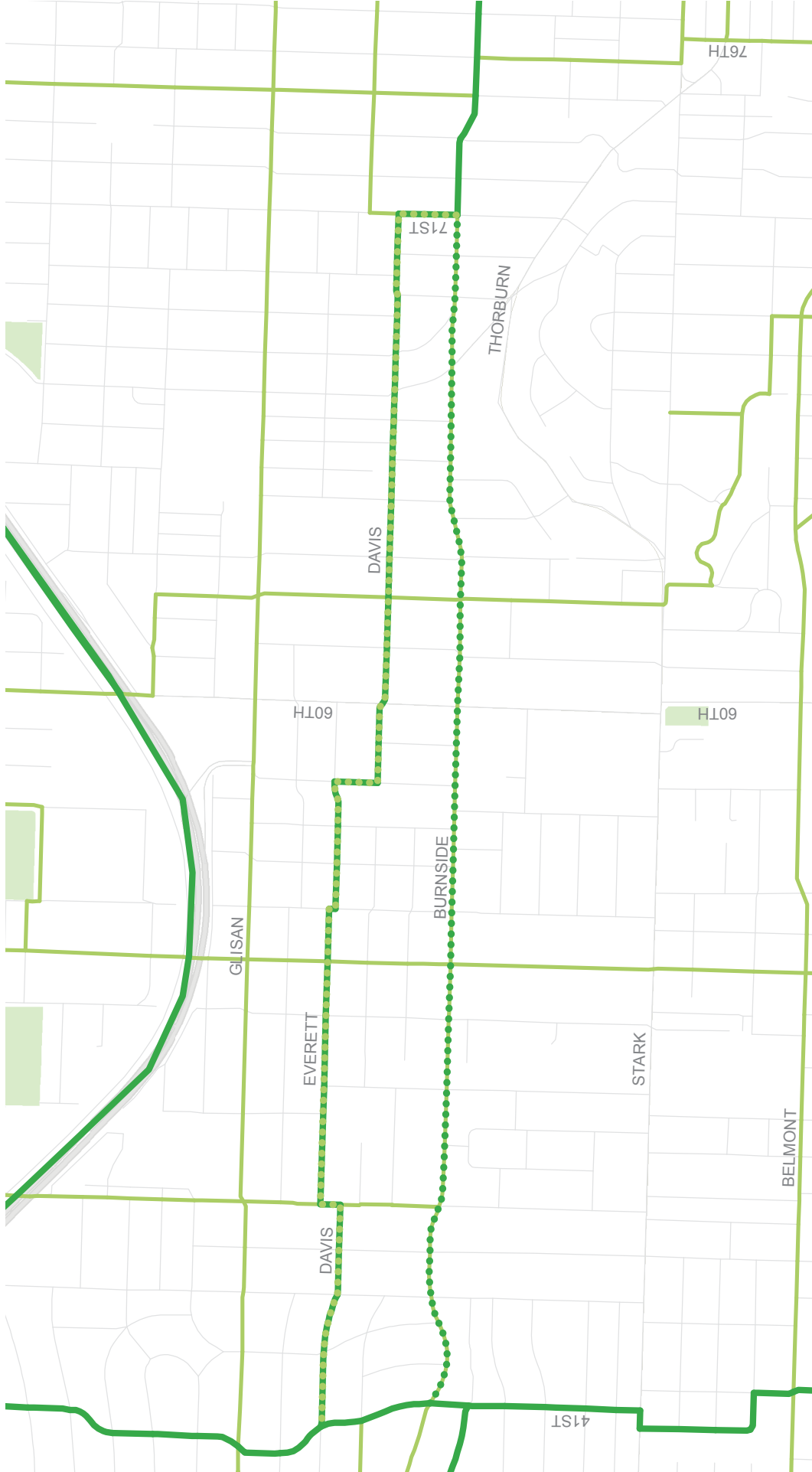
- | Bicycle Classification | Proposed Amendments |
|------------------------|---------------------|
| Major City Bikeway | Major City Bikeway |
| City Bikeway | City Bikeway |
| Local Service Bikeway | |





Major Bike Amendments Map ID #2





Major Bike Amendments Map ID #3

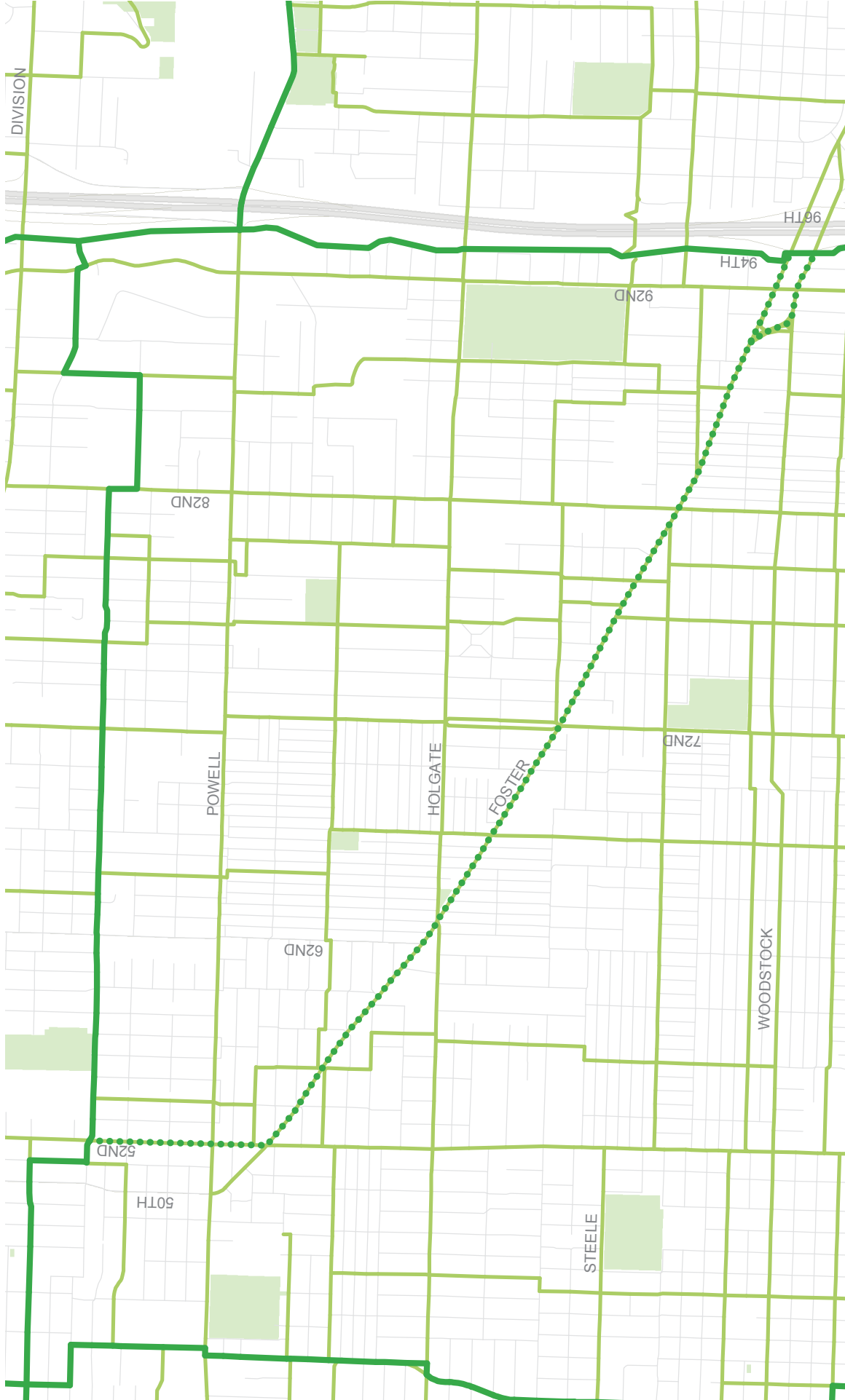
Bicycle Classification

- Major City Bikeway
- City Bikeway
- Local Service Bikeway

Proposed Amendments

- Major City Bikeway
- City Bikeway





Major Bike Amendments Map ID #4

- | Bicycle Classification | Proposed Amendments |
|------------------------|---------------------|
| Major City Bikeway | Major City Bikeway |
| City Bikeway | City Bikeway |
| Local Service Bikeway | |

