



# 1455 SW BROADWAY

Design Review Submission - LU 15-281248 DZM

March 3, 2016

## APPENDIX A: MATERIALS + PHOTOS

Site and Neighborhood Photos  
Building Material Palette  
Product Information  
Lighting Plans





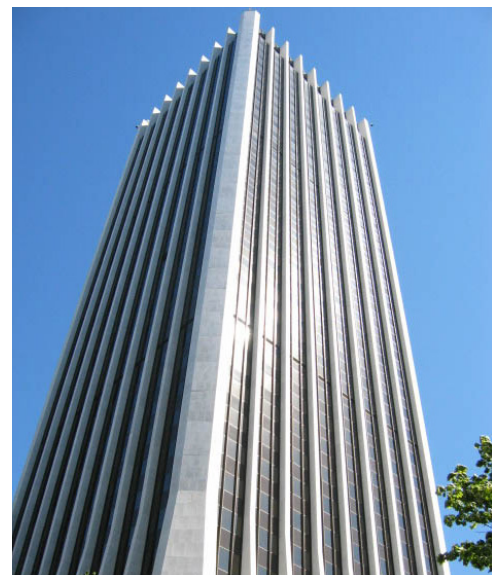
Looking southeast towards the River



Looking north towards Downtown

## SITE PHOTOS





## NEIGHBORHOOD PHOTOS





Overall view of site looking north



View across site towards Broadway, Raven and Rose and the Oregonian Building

## IMMEDIATE CONTEXT PHOTOS





View from northeast corner of site looking north on Broadway



View from site looking towards Park Blocks

## IMMEDIATE CONTEXT PHOTOS





View from site looking east to SW Broadway



View to site from the Park Blocks

## IMMEDIATE CONTEXT PHOTOS





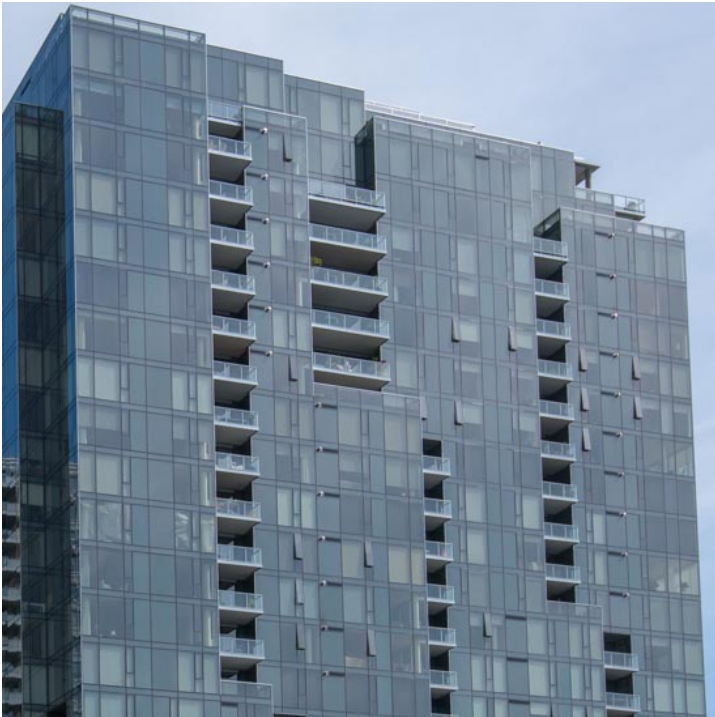
View across site towards the neighboring 1/4 block existing building



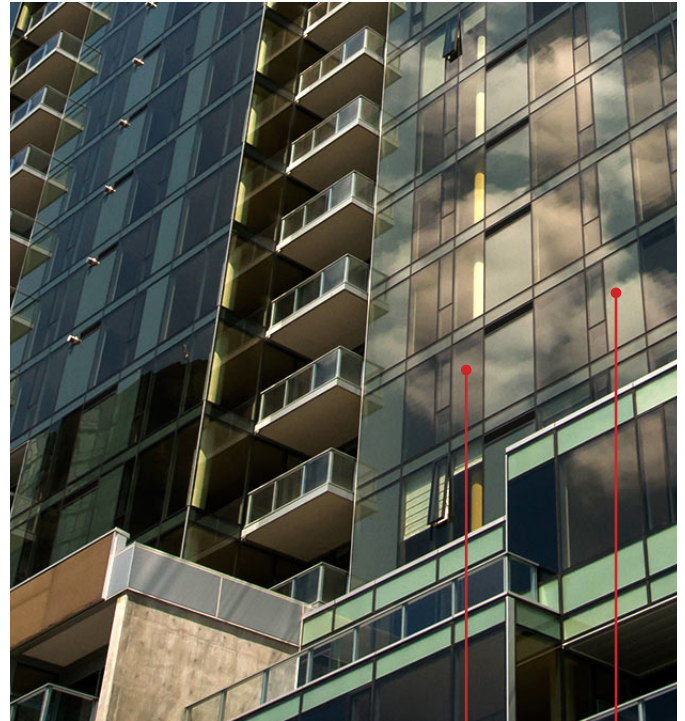
View from site looking north at intersection of SW Broadway and SW Columbia St.

## IMMEDIATE CONTEXT PHOTOS

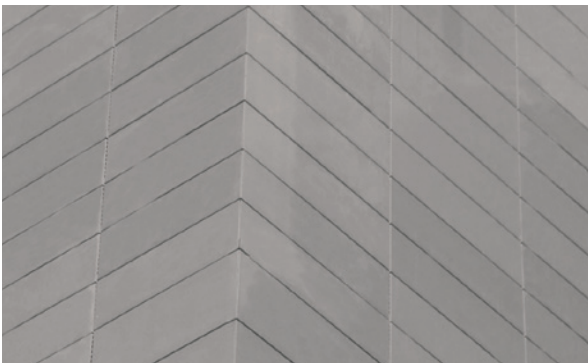




Unitized Curtainwall - Atwater Condominiums (representative image)



Clear Insulated Glass  
Insulated Spandrel Glass



Terracotta Cladding (representative image)



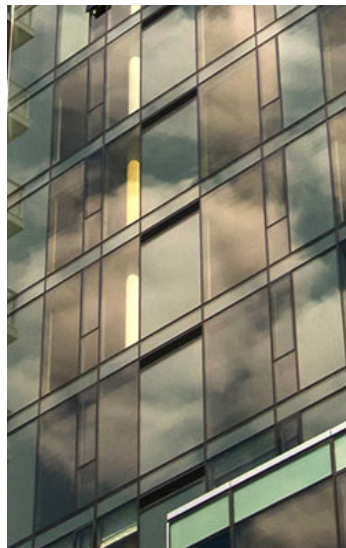
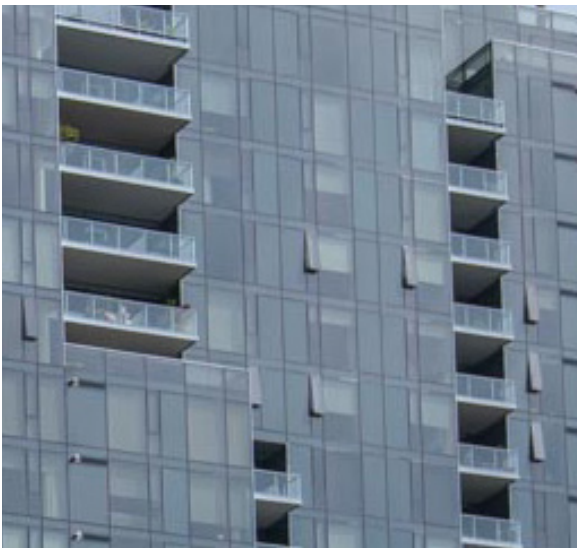
Metal Louver (representative image)



Metal Panel (representative image)

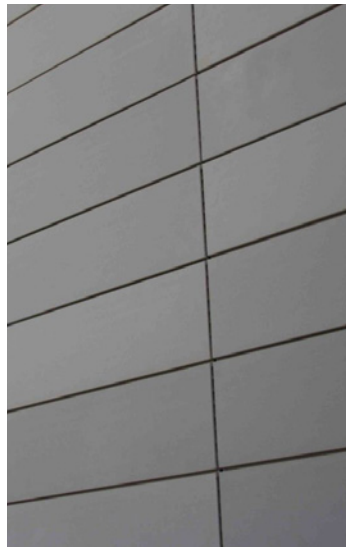
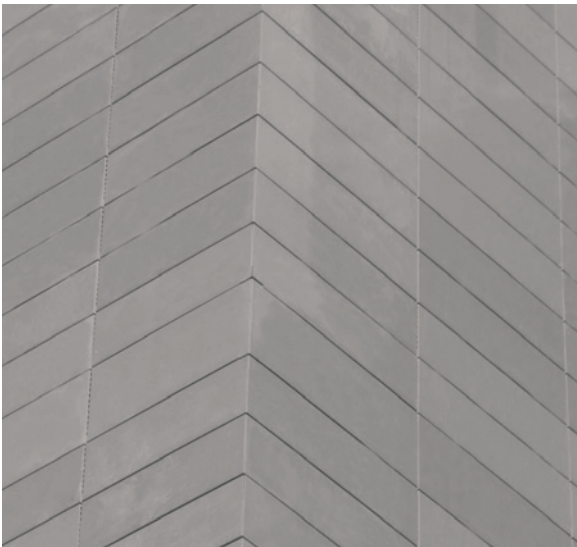
## EXTERIOR MATERIAL PALETTE





### CURTAINWALL GLAZING

- Unitized curtainwall system
- 5' typical vertical mullion spacing
- Structurally glazed joints
- Spandrel glazing at floor and patterned verticals
- Color: Satin Nickel



### TERRACOTTA RAINSCREEN

- Height: 9"
- Width: 5'-0" typical
- Color: Dark Gray



### STOREFRONT GLAZING

- Aluminum storefront glazing system
- Color: Satin Nickel



### METAL PANEL AND LOUVERS

- Composite metal panel cladding for canopies and column covers
- Frame-less Mechanical Louvers, color to match adjacent material
- Colors: Satin Nickel and Gatwick Silver

## EXTERIOR MATERIAL INFORMATION

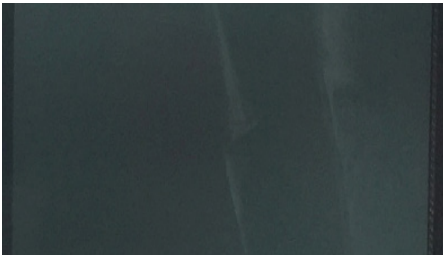




VISION SPANDREL SPANDREL  
#2 #1

### GLASS - VISION

- Viracon VE1-2M
  - 1/4" (6mm) clear VE-2M #2
  - 1/2" (13.2mm) airspace
  - 1/4" (6mm) clear
- Transmittance - Visible Light 70%
- Reflectance - Visible Light-Exterior 11%
- Shading Coefficient 0.44



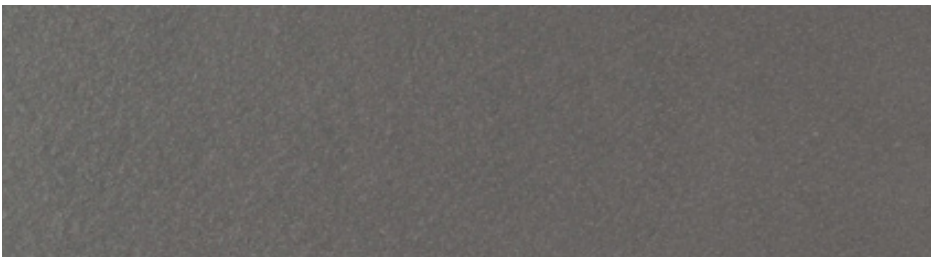
SPANDREL #1



SPANDREL #2  
(ACCENT)

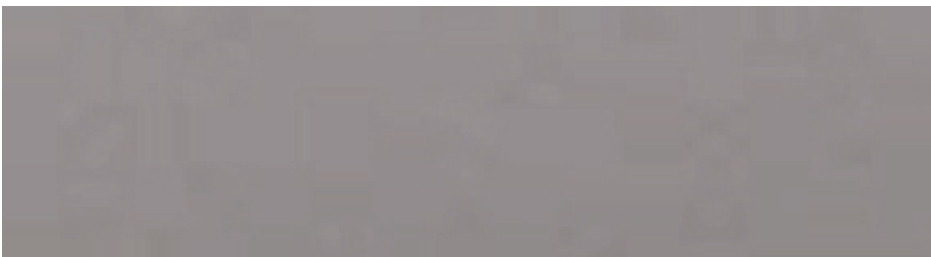
### GLASS - SPANDREL

- Storefront/Curtainwall
- Viracon VE1-2M w/ BM Deep Space (#4)
- Viracon VE1-2M w/ BM Gray Shower (#4)



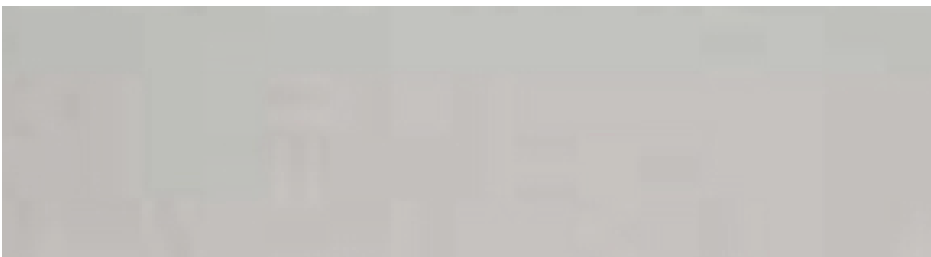
### TERRACOTTA

- NBK Terracotta rainscreen cladding
- Color: Dark Gray (custom color)
- Matte finish



### METAL PANEL

- 1/8" aluminum curtainwall metal panel AND composite metal panel.
- Color: Valspar Satin Nickel 399C2384



### METAL PANEL

- Composite metal panel at canopies and column covers
- Color: Valspar Gatwick Silver 399A998

# EXTERIOR MATERIAL INFORMATION



# SPIRAL<sup>®</sup> FV<sup>®</sup>

## HIGH PERFORMANCE RIGID ROLLING DOOR

### Ultra High Speed, Security and Full Vision - All in One Door

Take one look at the Spiral Full Vision (FV) door in action and it makes an immediate impression. With an ultra-high opening speed of up to 100 inches per second, it's extremely fast. Yet for all that speed, its unique Spiral technology keeps it whisper-quiet. Its top-to-bottom full-width window slats give it an extra measure of safety at the threshold, not to mention a sharp, high-tech look. All of which promote an enviable image of cutting-edge operations.

For modern production and commercial environments with high traffic, the Spiral FV will take your facility's look and efficiency to a higher plane.

**Fast** - With an opening speed of up to 100 inches per second, the Spiral FV improves traffic flow in fast-paced production and warehousing environments.

**Whisper Quiet** - With no metal-to-metal contact, the advanced Spiral technology offers whisper-quiet operation.

**Safe** - The top-to-bottom, full-width window slats, dual electric photo eyes and reversing edge in the bottom bar provide full visibility and added safety at the door's threshold.

**Smooth Operation** - The highly advanced System 4™ door controller enables precise door positioning, infinite speed adjustments and total control of all door functions.

**Energy Efficient and Tight Seal** - Polycarbonate window slats along with a durable rubber membrane provide a 100% seal against dust pollution, drafts, and inclement weather.



## PRODUCT INFO - GARAGE DOOR [ROLL-UP]



# SPIRAL® FV®

## HIGH PERFORMANCE RIGID ROLLING DOOR

**Model Name**

- Rytec® Spiral® FV® Door

**Size and Dimensions**

- Up to 26'2" W x 25'7" H
- Multiple door configurations based on door size.

**Safety**

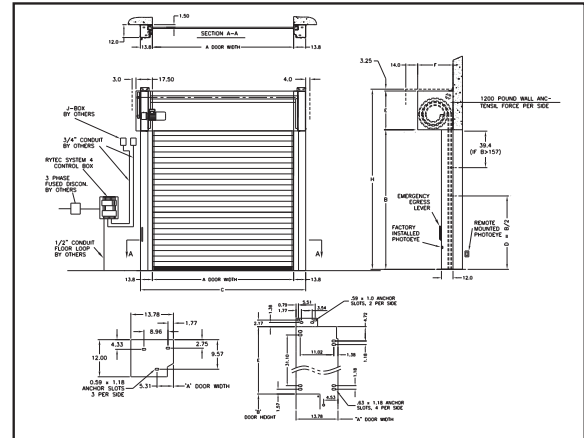
- Thru-beam photo eyes
- Control-reliable electronic reversing edge

**Available Options**

- Hood and motor covers
- Custom painted door panel

**Warranty**

- Five-year limited warranty on mechanical components.
- Two-year limited warranty on electrical components.



Nine inch high vision slats for increased visibility

**Architectural Styling**

- Aluminum slat frames with clear polycarbonate windows are 9 inches high.
- Maintains the security of a rigid door while full-height and full-width visibility provides for added safety.

**Spiral Technology**

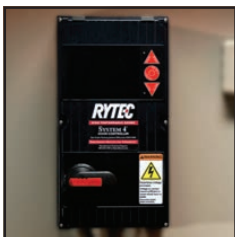
- Unique spiral design results in no metal-to-metal contact, resulting in less wear and tear on the panel.
- Whisper quiet and low maintenance operation.
- Utilizes a compact AC drive motor with variable speeds to allow for soft acceleration and deceleration.



Compact AC Drive Motor

**Electrical Controls**

- System 4™ controller housed in a NEMA 4X rated enclosure with factory set parameters.
- Intelligent processor monitors and controls power consumption.
- Advanced self-diagnostics for troubleshooting.



**Panel Design**

- Integral rubber weatherseal between the slats provides a tight weatherseal across the entire panel.
- Rubber weatherseal is replaceable for easy maintenance.
- Patented hinge design allows for removal and replacement of single slat without disassembling the door panel.



Integral rubber weatherseal

**Counterbalance System**

- Up to six extension springs in each side column, depending on the size of the door.
- The springs assist the motor in opening, reducing motor wear and increasing the longevity of mechanical components.
- Mechanical egress lever on the side column allows the door to be opened in the event of a power failure.

**Travel Speed**

- Opens at up to 100 inches per second.



**HIGH PERFORMANCE DOORS**

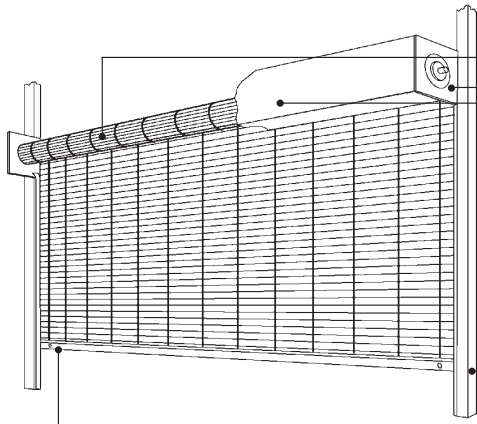
888-GO-RYTEC      RytecDoors.com  
 Tel 262-677-9046      Fax 262-677-2058  
 One Cedar Parkway      Jackson, WI 53037-0403

## PRODUCT INFO - LOADING GARAGE DOOR



# 5000 SERIES

## ROLLING GRILLES

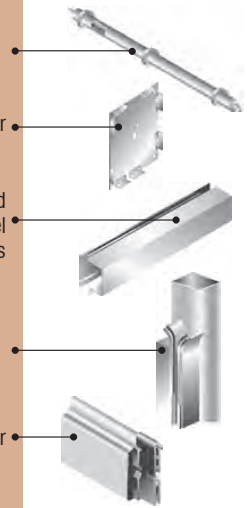


**Counter-Balance Shaft** - 4-1/2" minimum diameter outer shaft and 1-1/4" minimum inner shaft. This assembly supports the curtain and contains counter-balance torsion springs for assisting operation.

**Brackets** - Minimum 3/16" steel plates bolt to guide supporting member and support counter balance shaft and curtain.

**Optional Hood & Fascia** - (not normally provided when unit is concealed above a ceiling). Protective enclosure for the curtain available in steel Gray ColorCote™, aluminum mill, clear and color anodized or 300 series stainless steel #4 finish.

**Guides** - Extruded aluminum sections equipped with polypropylene pile runners and mounting member to support the entire weight of the unit.



**Bottom Bar** - 2" x 3 1/2" heavy duty extruded aluminum tubular section that houses optional locking mechanisms. For widths greater than 27'-4", the bottom bar is reinforced with 3" x 2" x 3/16" aluminum angle(s).

**Self-Supporting Installation Option** - Many grille installations utilize structural steel tubes for support, which allows for installation prior to the walls and ceiling being built. The tubes are factory prepared for the attachment of all grille components. Tubes are attached to the floor slab below and the joists above, thereby becoming self-supporting.

**Choice of Operation**

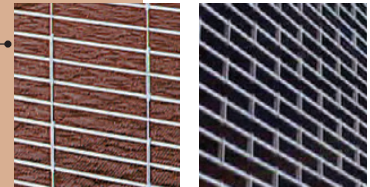
- Push-up
- Crank
- Chain
- Motor

**Choice of Finishes**

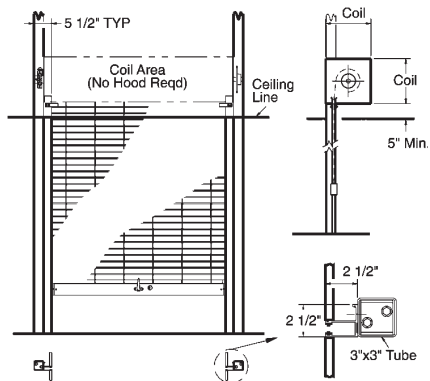
- Mill Finish Aluminum
- Clear Anodized Aluminum
- Bronze or Color Anodized Aluminum
- Galvanized Steel
- Stainless Steel

**Choice of Grille Pattern**

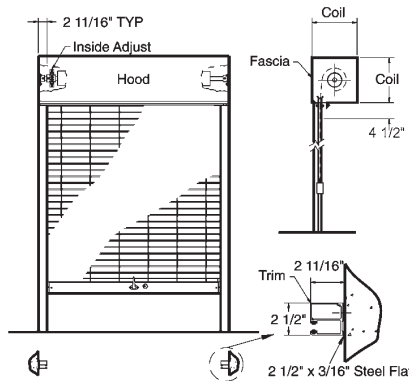
- Straight Pattern
- Brick Pattern



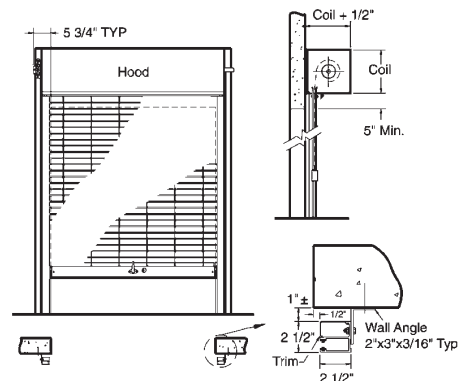
**TYPICAL DETAILS**



**BETWEEN JAMBS SELF SUPPORTING**  
Mounts to structural tubes that are attached to the floor slab and braced to the structure above.



**BETWEEN JAMBS CONVENTIONAL**  
Mounts within the opening, fascia (front hood closure piece) required.



**FACE OF WALL**  
Maintains clearance of full opening, minimal exposed components.



**The Cookson Company, Inc.**

P.O. Box 23880  
Phoenix, AZ 85063

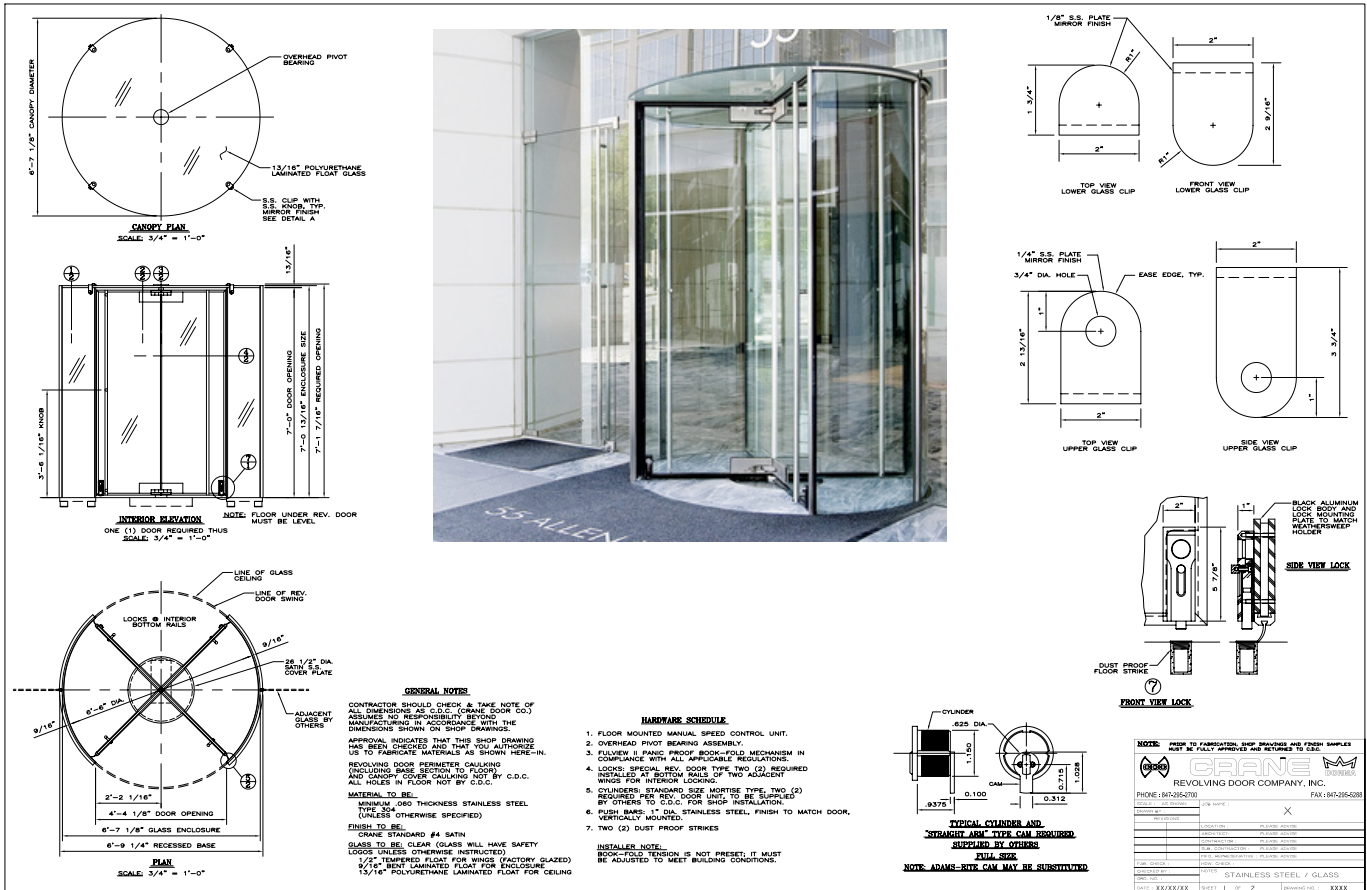
Phone: (800) 390-8590  
Fax: (866) 448-6804

Visit our website at [Cooksondoor.com](http://Cooksondoor.com)  
Or e-mail us at [Marketing@Cooksondoor.com](mailto:Marketing@Cooksondoor.com)

[Facebook.com/The.Cookson.Company](https://www.facebook.com/The.Cookson.Company) © 2013

# PRODUCT INFO - LOADING GARAGE DOOR





**OVERHEAD PIVOT BEARING**  
13/16" POLYURETHANE LAMINATED FLOAT GLASS  
3/8" S.S. CLIP WITH POLISHED EDGES, MIRROR FINISH. SEE DETAIL A

**CANOPY PLAN**  
SCALE: 3/4" = 1'-0"

**INTERIOR ELEVATION**  
SCALE: 3/4" = 1'-0"

**GENERAL NOTES**  
CONTRACTOR SHOULD CHECK & TAKE NOTE OF ALL DIMENSIONS AS C.D.C. (CRANE DOOR CO.) ASSUMES NO RESPONSIBILITY BEYOND MANUFACTURING IN ACCORDANCE WITH THE DIMENSIONS SHOWN ON SHOP DRAWINGS.  
ADDITIONAL NOTES: THIS SHOP DRAWING USES REFERENCE TO DIMENSIONS SHOWN HEREIN.  
REVOLVING DOOR PERIMETER CAULKING INCLUDING THE BOTTOM RAILS OF TWO ADJACENT WINGS FOR INTERIOR LOOKING.  
MATERIAL TO BE: 1/2" THICKNESS STAINLESS STEEL (UNLESS OTHERWISE SPECIFIED)  
FINISH TO BE: CRANE STANDARD #1 SATIN  
GLASS TO BE: CLEAR GLASS WILL HAVE SAFETY LOGOS (UNLESS OTHERWISE INSTRUCTED)  
1/2" TEMPERED LAMINATED FLOAT FOR ENCLOSURE  
13/16" POLYURETHANE LAMINATED FLOAT FOR CEILING

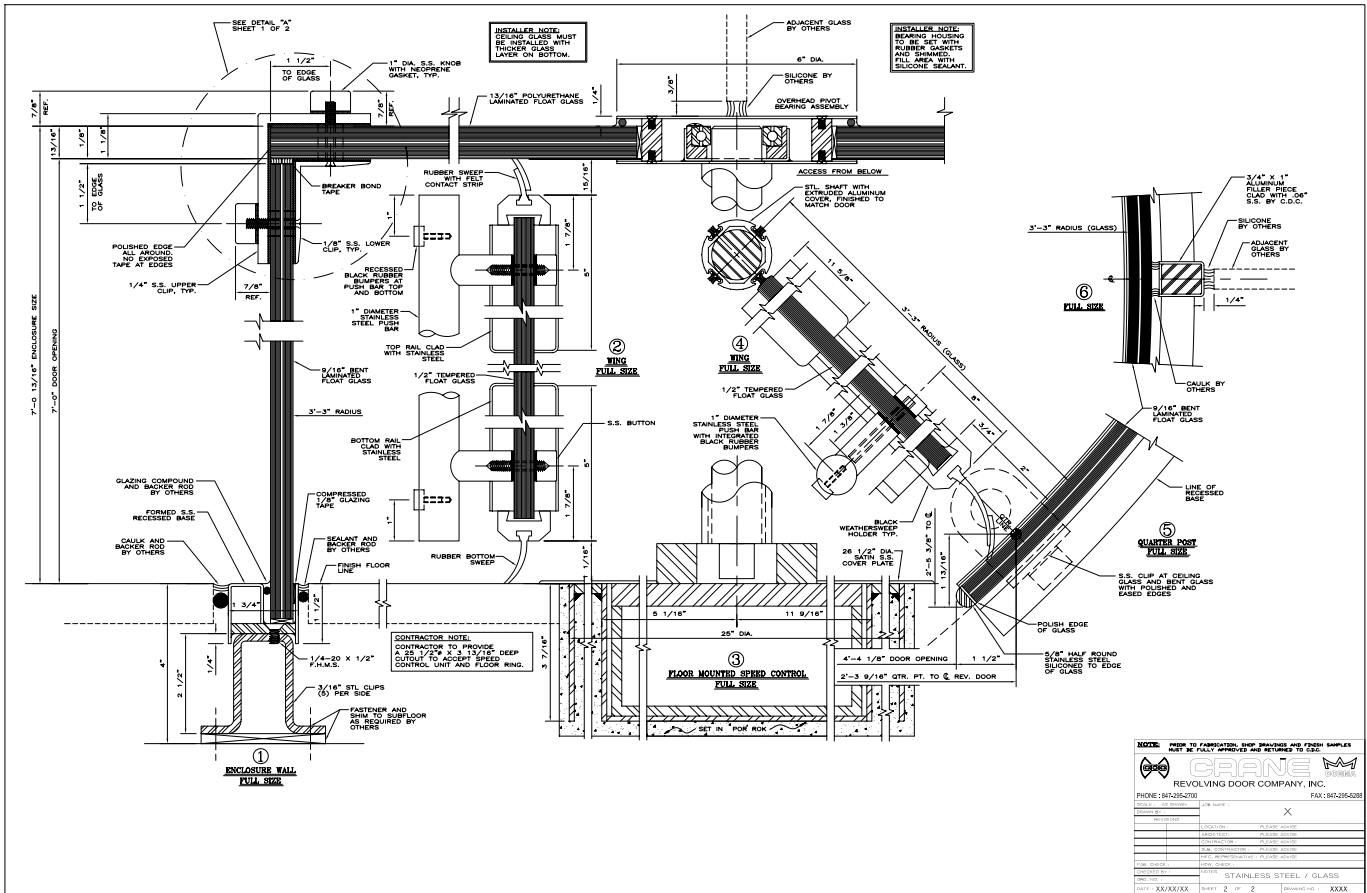
**HARDWARE SCHEDULE**  
1. FLOOR MOUNTED SPEED CONTROL UNIT.  
2. OVERHEAD PIVOT BEARING ASSEMBLY.  
3. FLOORS II FRANGIBLE PROOF BODY-FIELD MECHANISM IN COMPLIANCE WITH ALL APPLICABLE REGULATIONS.  
4. LOGS: SPECIAL REV. DOOR TYPE TWO (2) REQUIRED INSTALLED AT BOTTOM RAILS OF TWO ADJACENT WINGS FOR INTERIOR LOOKING.  
5. CYLINDERS: STANDARD SIZE MORTISE TYPE TWO (2) REQUIRED PER REV. DOOR UNIT TO BE SUPPLIED BY OTHERS TO O.D.C. FOR SHOP INSTALLATION.  
6. RUBIN MOUNT 1" DIA. STAINLESS STEEL, FINISH TO MATCH DOOR, VERTICALLY MOUNTED.  
7. TWO (2) DUST PROOF STRIKES

**INSTALLER NOTE:**  
BODY-FIELD TENSION IS NOT PRESET, IT MUST BE ADJUSTED TO MEET BUILDING CONDITIONS.

**TYPICAL CYLINDER AND "STANDARD" SIZE CAN BE SUBSTITUTED BY OTHERS.**  
**INSTALLER NOTE:** BEARING HOUSING TO BE SET WITH RUBBER GASKETS AND SHIMMERS TO MATCH DOOR. FINISH TO BE SILICONE SEALANT.

**NOTES:**  
FROM TO FABRICATOR, SHOP DRAWINGS AND FINISH SAMPLES MUST BE FULLY APPROVED AND RETURNED TO C.D.C.

**CRANE**  
REVOLVING DOOR COMPANY, INC.  
PHONE: 847-295-2750 FAX: 847-295-2835  
WWW.CRANEDOOR.COM



**ENCLOSURE WALL**  
SCALE: 3/4" = 1'-0"

**WING FULL SIZE**

**QUARTER POST FULL SIZE**

**FLOOR MOUNTED SPEED CONTROL**  
SCALE: 3/4" = 1'-0"

**INSTALLER NOTE:**  
SEE-INSTALLED WITH THICKER GLASS LAYER ON BOTTOM.

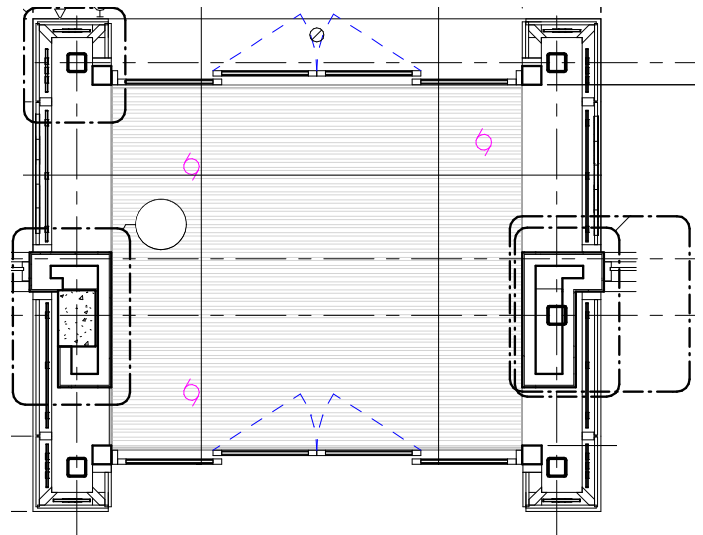
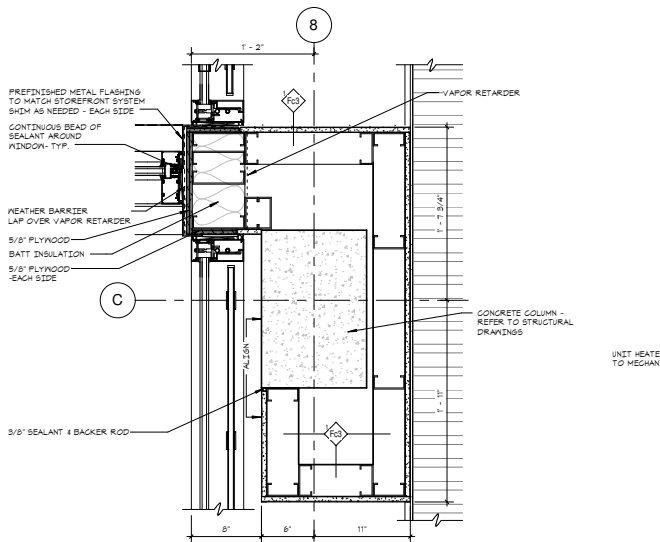
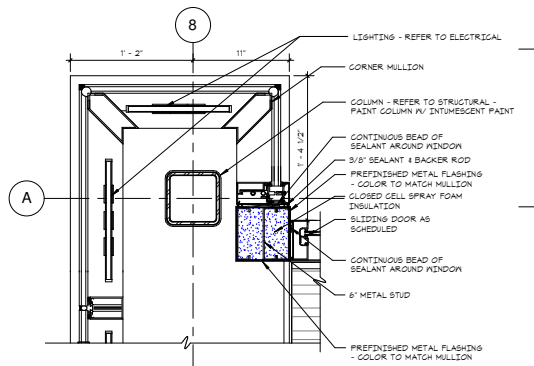
**INSTALLER NOTE:**  
BEARING HOUSING TO BE SET WITH RUBBER GASKETS AND SHIMMERS TO MATCH DOOR. FINISH TO BE SILICONE SEALANT.

**NOTES:**  
FROM TO FABRICATOR, SHOP DRAWINGS AND FINISH SAMPLES MUST BE FULLY APPROVED AND RETURNED TO C.D.C.

**CRANE**  
REVOLVING DOOR COMPANY, INC.  
PHONE: 847-295-2750 FAX: 847-295-2835  
WWW.CRANEDOOR.COM

# PRODUCT INFO - REVOLVING ENTRANCE DOOR





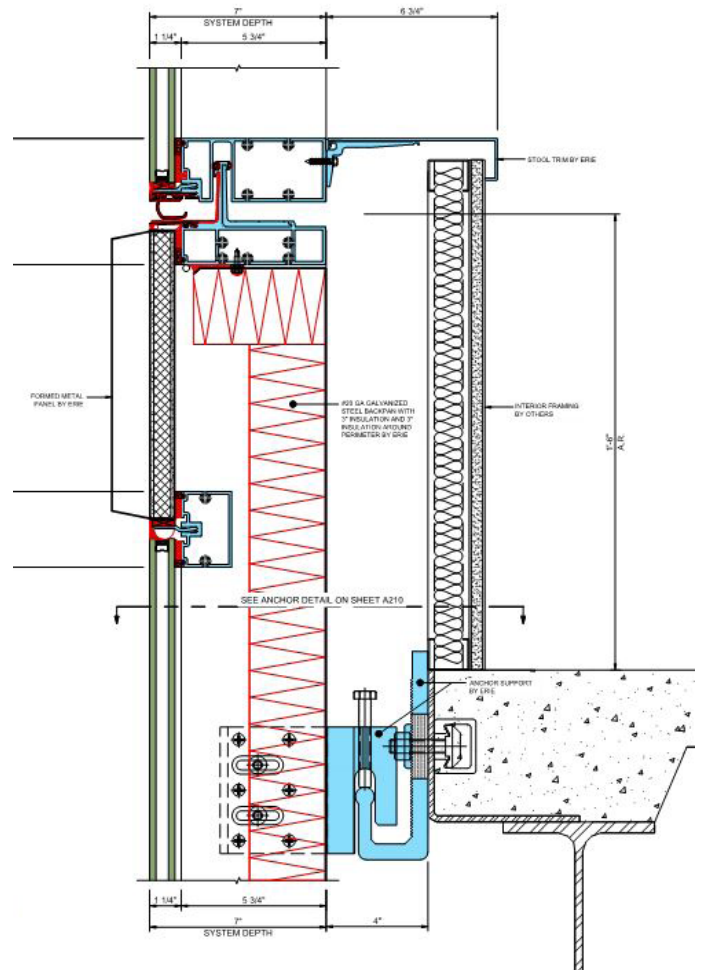
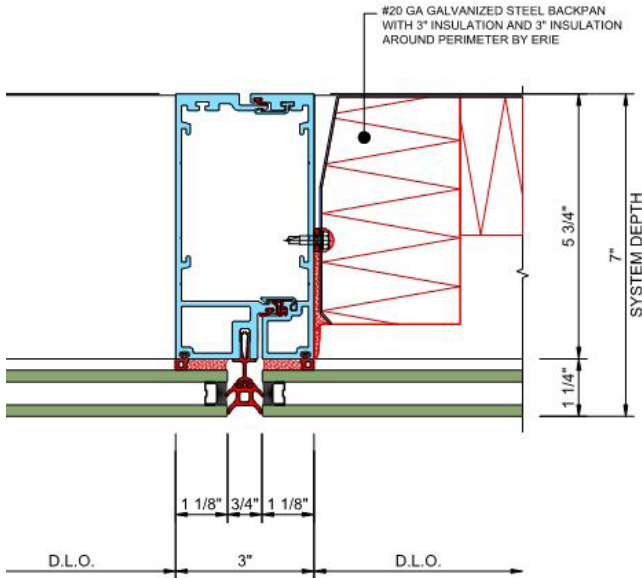
## PRODUCT INFO - HOTEL ENTRANCE DOOR





**ENVIRO | FACADES™**  
**UNITIZED CURTAIN WALL**  
**EFseries<sub>uw</sub>**

- ✓ Suitable for new construction or remodel
- ✓ Factory fabricated in a controlled environment – shipped assembled
- ✓ Rapid erection with minimum time required to close in building once on-site
- ✓ Structurally glazed (exterior options include for four-sided SSG, or one thru four-sided captured)
- ✓ Ideally suited for custom integration of horizontal or vertical sunshades.
- ✓ Large panel capability
- ✓ Includes full engineering documentation and support



# PRODUCT INFO - ALUM. CURTAINWALL/STOREFRONT SYSTEM



# Portfolio

## DESCRIPTION

4 inch LED square recessed downlight with 50° cut off specially designed for LED technology. Two-stage reflector system produces smooth distribution with excellent light control and low aperture brightness. Lumen packages include 900, 1300, 1800 and 2800 lumens with color temperatures of 2700K, 3000K, 3500K, 4000K.

<b>Catalog #</b>		<b>Type</b>
<b>Project</b>		
<b>Comments</b>		<b>Date</b>
<b>Prepared by</b>		

## SPECIFICATION FEATURES

### Lower Parabolic Reflector

Aluminum lower reflector in combination with a lensed upper optical chamber provides superior lumen output with minimal source brightness. Available in all Portfolio Alzak® finishes.

### Trim Retention

Reflector is retained with two torsion springs holding the flange tightly to the finished ceiling surface.

### Plaster Frame / Collar

Galvanized steel plaster frame with adjustable collar adjusts for up to 2" thick ceilings and rotates +/- 7.5°.

### Universal Mounting Bracket

Accepts 1/2" EMT, C channel and bar hangers and adjusts 5" vertically from above and below the ceiling.

### Junction Box

(4) 1/2" and (2) 3/4" trade size pry outs positioned to allow straight conduit runs. Listed for (8) #12

AWG (four in, four out) 90°C conductors and feed thru branch wiring.

### Thermal

Extruded aluminum heat sink conducts heat away from the LED module for improved performance and longer life.

### LED

LED system contains a plurality of high brightness white LED's combined with a high reflectance upper reflector and convex transitional lens producing even distribution with no pixilation. Rated for 50,000 hours at 70% lumen maintenance. Auto resetting, thermally protected, LED's are turned off when safe operating temperatures are exceeded. Color variation within 3-step MacAdam ellipses. Flexible disconnect allows for tool-less replacement of LED engine from below ceiling. Available in 80 or 90 CRI.

### Driver

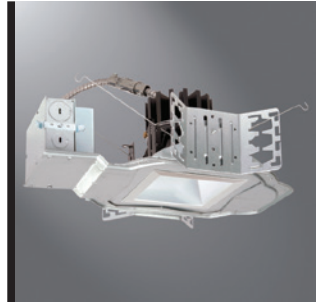
Combination 0-10V/trailing edge driver provides flicker free dimming from 100% to 10%. Optional 1% 0-10V, Fifth Light, DMX or Lutron® Ecosystem. Driver can be serviced from above or through the aperture.

### Code Compliance

Thermally protected and cULus listed for protected wet locations. Optional City of Chicago environmental air (CCEA) marking for plenum applications. EMI/RFI emissions per FCC 47CFR Part 18 Class B consumer limits. Non-IC rated - Insulation must be kept 3" from top and sides of housing. RoHS Compliant. Title 24 Compliant with designated trims. Photometric testing completed in accordance with IES LM 79 standards. LED life testing completed in accordance with LM 80 standards.

### Warranty

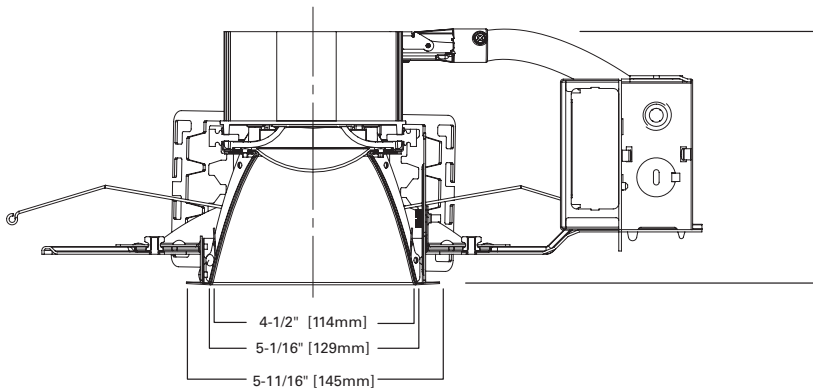
5 year warranty.



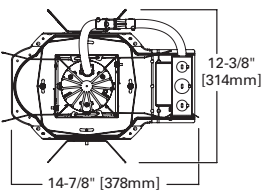
**LDSQ4A09**  
**LDSQ4A13**  
**LDSQ4A18**  
**LDSQ4A28**  
**4LSQ**

900, 1300 Lumen LED  
 1800, 2800 Lumen LED

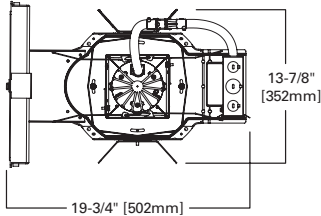
4-Inch Square  
 Downlight



TOP VIEW



TOP VIEW WITH BATTERY



		H
900/1300 Lumen	D010TE	5-9/16"
	D010TR	
	DL3	
	DLT	
900/1300 Lumen	D5LT	7-9/16"
	DMX	
	DE010	
1800/2800 Lumen	All	7-9/16"



Refer to ENERGY STAR® Qualified Products List.



# PRODUCT INFO - EXTERIOR DOWNLIGHT



# ECOSENSE®

**EcoSpec® Linear HP EXT Wall Wash - Low Power**

**New Linear Series**

DATE \_\_\_\_\_

PROJ. \_\_\_\_\_

FIRM \_\_\_\_\_

TYPE

## OVERVIEW / SPECIFICATION



EcoSpec® Linear HP EXT Wall Wash - has an impressive array of narrow, medium, wide and elliptical beam angles that provides brilliant results for exterior façade grazing, and wall washing applications that are exposed to harsh elements. The new glass lens provides better protection against harsh environments and chemicals and the GORE® Vent protects the internal system from moisture and improves the overall lifetime of the fixture. Patent-pending dimming technology dims down to 0% output power.

### Features:

- **Economical**
- **Simple Installation**
- **In-line Connection**
- **High Efficacy**
- **Integral Driver / AC Power**
- **Dimmable: ELV (RP), 0-10V**
- **Dimming at 120V, 220V, and 277V**
- **Dimming down to 0%**
- **Glass Lens**

PERFORMANCE <small>ADDITIONAL INFORMATION ON NEXT PAGE</small>	CCT (K)	Optic	Lumen Output		Efficacy (lm/W)
			12"	48"	
	2700K	6°x6°	576 lm/LF	2,304 lm	80.4lm/W
	3000K	6°x6°	627 lm/LF	2,508 lm	89.1lm/W
	3500K	6°x6°	584 lm/LF	2,336 lm	81.7lm/W
	4000K	6°x6°	631 lm/LF	2,524 lm	88.7lm/W
<small>* Performance data is from LM-79 and LM-63 testing at typical power input</small>					
	<b>Color Rendering Index</b>	80+			
	<b>Color Consistency</b>	2 Step MacAdam Ellipse			
	<b>Lumen Depreciation / Rated Life</b>	L70 >60,000 hours @ 25°C*			
<small>* Calculations for LED fixtures are based on measurements that comply with IES LM-80 testing procedures and IES TM-21 Calculator.</small>					
ELECTRICAL	Power Consumption	7W/LF Typical (The Typical input power range allows for a +/-10% variation of all components) 8W/LF Maximum (All fixtures are labelled with Maximum wattage)			
	<b>Max Fixture Run Length</b>	85' (25m) @120VAC; 125' (37m) @220VAC ; 125' (37m) @277VAC			
	<b>Power Factor</b>	0.90			
	<b>Operating Voltage</b>	100-120VAC, 220-240VAC, 277VAC, 50/60 Hz (all voltages)			
	<b>Driver</b>	Integral to Fixture; De-rated Power and Synchronous Start-up at Full Brightness			
	<b>Startup Temperature</b>	-40°F to 122°F (-40°C to 50°C)			
	<b>Operating Temperature</b>	-40°F to 122°F (-40°C to 50°C)			
	<b>Storage Temperature</b>	-40°F to 176°F (-40°C to 80°C)			
CONTROL	Dimming	100-120VAC ELV type, Reverse Phase, Trailing Edge 220-240VAC ELV type, Reverse Phase, Trailing Edge 277VAC ELV type, Reverse Phase, Trailing Edge 120VAC / 277VAC, 0-10V with Linear Dimming Control Module (LDCM)			
PHYSICAL	Dimensions	W 2.37" x H 2.36" x L 12"/48"; (60mm x 60mm x 308mm/1219mm)			
	<b>Housing / Lens</b>	Extruded Aluminium; Tempered Glass; Stainless Steel Fasteners Metal Endcaps with Plastic/Rubber Overmold for Cable Assembly			
	<b>Weight</b>	2.43lbs / 1.1kg (1ft) / 10.36lbs / 4.7kg (4ft) approx			
	<b>Connectors</b>	Integral Male/ Female 3 Pin Connectors on Pigtail Cable Assembly, IP66 Rated			
	<b>Environment</b>	Outdoor; CE Certified IP66 / ETL Certified for Wet Locations			
	<b>Beam Angle</b>	Native: 6°x 6° / 6°x 15° / 10°x 60° / 17°x 35° / 30°x 60° / 60°x 60°			
	<b>Mounting Options:</b>	Flat Mounting Brackets, Hinge Brackets and Safety Brackets			
FITURE RATING & CERTIFICATIONS	CE, C-Tick Certified, CCC ETL Certified RoHS Compliant				
LIMITED WARRANTY	5 Years				

EcoSense THD/Inrush Current Information: Please contact an EcoSense Lighting sales representative

<b>1</b>	EcoSense Lighting Inc. 915 Wilshire Boulevard Suite 2175 Los Angeles, CA 90017	Phone 310-496-6255 Fax 310-496-6256 Toll Free 855-632-6736 855-6-ECOSEN	Specifications subject to change without notice. Visit <a href="http://EcoSenseLighting.com">EcoSenseLighting.com</a> for the most current specifications.  2014 All rights reserved. EcoSense, the EcoSense logo, and EcoSpec are registered trademarks of EcoSense Lighting Inc. SPEC-WWEL-20140410-V1
----------	---	--	--

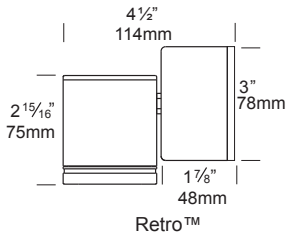
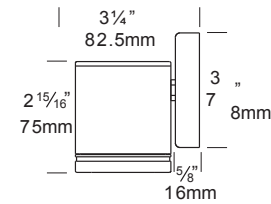
## ECOSENSELIGHTING.COM

# PRODUCT INFO - PENDANT UPLIGHT



# Down Lite PURE LED

Cat. NO DL/L



**PURE LED**  
Pure Performance

The Down Lite PURE LED is suitable for mounting on timber, masonry, stone, etc. non-adjustable for one way wall washing, can can be mounted with the lamp directed up or down. Water resistant with a 78mm diameter mounting base, complete with stainless steel screws.

This luminaire is machined from solid aluminium with a UV stable powder coat, solid 316 stainless steel or solid copper. It features an extra clear, low iron tempered flush lens and high temperature silicon gaskets.

The Hunza PURE LED system uses Cree MTG-2 chips for maximum performance and long life. Power supply options include a choice of integral 12 or 120/240 volt (Retro) drivers. There is an external remote (series connection) driver option also. The PURE LED system incorporates Hunza's Plug-and-Play system for easy replacement of the LED engine. Four beam angles, and a choice of a Warm or Cool White colour temperatures are available.

\* At 700mA this fitting is the equivalent of a 35w halogen fitting.

\* At 1050mA this fitting is the equivalent of a 50w halogen fitting.

### Ordering Information

Luminaire	Driver mA	Beam Angle	Colour Temp	Accessories	Material/Finish
DL/L	S - Series D7 - 12V 700mA D10 - 12V 1050mA RE - 240V Retro RU - 110V Retro	15 - 15° TIR Lens 25 - 25° TIR Lens 38 - 38° Reflector 60 - 60° Reflector	3 - 3000K 4 - 4000K	GG - Glare Guard STEPF - Frosted Lens WB - Wall Box Adaptor HCL - Hex Cell Lourve	BK - Black BZ - Bronze GN - Green STAR - Silver Star WH - White WB - Birch DG - Dark Grey OG - Olive Green RG - Beige PR - Primrose COP - Copper SS - 316 Stainless

Ordering Example: DL/L S 15 3 GG BK

	<b>HUNZA FACTORY</b> 130 Felton Mathew Ave Saint johns Auckland 1072 New Zealand	Ph: 64-9-528 9471 Fax: 64-9-528 9361 hunza@hunza.co.nz www.hunza.co.nz	<b>INTERNATIONAL CONTACTS:</b> www.hunza.co.nz/contacts.php Specifications may change without notice. Manufactured in New Zealand. © 2014 Hunza Holdings Ltd.
--	--	---	---

## PRODUCT INFO - CANOPY UPLIGHT





**LTV8FF**  
**Lightvault® 8 Flat Frame**  
 kl\_ltv8ff\_spec.pdf

JOB \_\_\_\_\_ TYPE \_\_\_\_\_  
 NOTES \_\_\_\_\_ APPROVALS \_\_\_\_\_

**FEATURES**

- Sealed IP68 LED light engine
- Bluetooth connectivity for remote control aiming and dimming
- Free Mobile App for Android and iOS
- Easy to install and pair devices
- Advanced thermal management provides long life in excess of 100,000+ hours
- Runs cool to the touch - less than 40°C

**Certifications**



**SPECIFICATIONS**

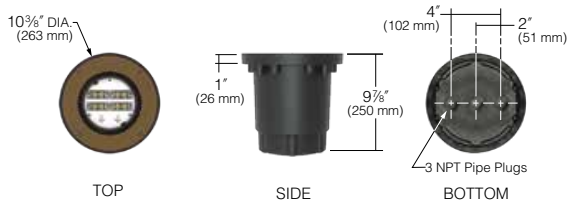
Pour Box rough-in housing ships separately and as a quick-ship if requested.



**LTV81FF**



**LTV82FF**



**LTV83FF**

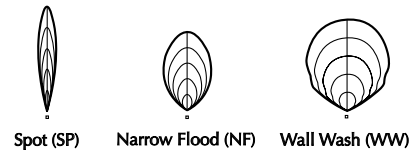


**DEBRIS SHIELDS**



**LIGHT DISTRIBUTIONS:**

LTV81FF, LTV82FF, LTV83FF



**ORDERING CODE**

LTV8xFF						
Fixture Size	Distribution*	Source	Electrical Module		Lens Options <sup>1</sup>	Rebar Cage Anchor
LTV81FF	13" Dia.	SP, NF, WW	36L	36 LEDs	SR Slip-Resistant Lens	RCA81 for LTV81
LTV82FF	10-3/8" Dia.	SP, NF	18L	18 LEDs	PL Prismatic Lens	RCA82 for LTV82
LTV82FF	10-3/8" Dia.	WW	16L	16 LEDs		RCA83 for LTV83
LTV83FF	7-15/16" Dia.	SP, NF, WW	12L	12 LEDs		

\* SP = Spot, NF = Narrow Flood, WW = Wall Wash

Kim Lighting reserves the right to change specifications without notice.



**PRODUCT INFO - CANOPY UPLIGHT**





**FEATURES & SPECIFICATIONS**

**INTENDED USE** — Sharing many popular Z Series elements, this solid-state strip offers long maintenance-free life, several color temperatures, lumen outputs and lengths. Ideal for new construction and retrofit applications in T5 and T8 lengths. Ideal for uplight and downlight in commercial, retail, manufacturing, warehouse, cove and display applications.

**CONSTRUCTION** — Compact-design channel and cover are formed from code-gauge, cold-rolled steel. Improved easy "snap 'n' lock" end plates allow for quick attachment.

**Finish:** Paint options include high-gloss, baked white enamel (WH), galvanized (GALV), matte black (MB) and smoke gray (SKGY). Five-stage iron phosphate pre-treatment ensures superior paint adhesion and rust resistance.

**OPTICS** — Replaceable medium diffuse lens (up to 10%) offer ingress protection from debris.

**ELECTRICAL** — Utilizes high-output LEDs integrated on a two-layer circuit board, ensuring cool-running operation. Internal pluggable wiring harness prevents wiring errors. Electronic LED driver is rated for 75 input watts maximum (see Operational Data on page two for actual wattage consumption), **multi-volt input and 0-10V dimming standard**. This fixture is designed to withstand a maximum line surge of 1.5kV at 0.75kA combination wave for indoor locations, for applications requiring higher level of protection additional surge protection must be provided.

LEDs provide 83 CRI at 3000 K, 3500 K, 4000 K or 5000 K.

Lumen output ranges from 2100 to 6000 lumens. Beam angle is 110 FWHM (full width at half maximum).

Lumen output up to 1,300 lumens per foot. In 86°F (30°C) ambient environments, L70 is predicted to be 100,000+ hours, L85 at 44,000 hours. Luminaire should be installed in applications where ambient temperatures do not exceed 86°F (30°C). Ambient temperatures that exceed 86°F (30°C) will result in reduced life and will void warranty.

**INSTALLATION** — Tool-less channel cover for easy installation.

Fixture may be surface, pendant or stem mounted. Three-point aligner locks in place for easy continuous row mounting.

**LISTINGS** — UL Listed. CSA certified to US and Canadian safety standards. For use in damp locations between -4°F (-20°C) and 86°F (30°C).

**WARRANTY** — 5-year limited warranty. Complete warranty terms located at [www.acuitybrands.com/CustomResources/Terms\\_and\\_conditions.aspx](http://www.acuitybrands.com/CustomResources/Terms_and_conditions.aspx)

**Note:** Actual performance may differ as a result of end-user environment and application.

All values are design or typical values, measured under laboratory conditions at 25 °C.

Specifications subject to change without notice.

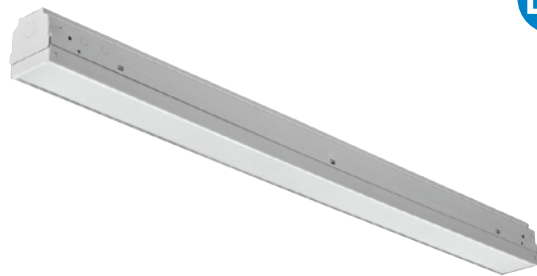
Catalog Number
Notes
Type



Lensed LED Striplight

**ZL2N**

24" and 48" Lengths



**ORDERING INFORMATION** Lead times will vary depending on options selected. Consult with your sales representative. **Example: ZL2N L48 3000LM MDD MVOLT 40K 80CRI WH**

ZL2N		Length		Nominal lumens <sup>1</sup>		MDD		Voltage		Color temperature		Color rendering index		Options		Paint finish		
Series						Diffuser												
ZL2N Lensed LED striplight	L24	24"	2000LM	2,000 lumens	MDD	Medium diffuse	MVOLT	120-277V	40K	4000 K	80CRI	80 CRI	PLR	Plug-in wiring <sup>3</sup>	WH	White		
	L46	46"	2000LM	2,000 lumens				ZSD	Zebra striped lens	347-480V <sup>2</sup>	30K	3000 K	90CRI	90 CRI	PLR1LVG	Plug-in wiring low voltage <sup>4</sup>	GALV	Galvanized
	L48	48"	3000LM	3,000 lumens						5000LM	5,000 lumens	35K	3500 K			BSL722	Emergency battery pack <sup>5,6</sup>	MB
								50K	5000 K					SKGY	Smoke gray			

Accessories: Order as separate catalog number.	
ZACVH	Aircraft cable with hook
HC36	Hanger chain, 36"
ZSPRG	For 15/16" T-grid only
LSXR	Sensor Switch® LSXR occupancy sensor <sup>3</sup>

Replacement Lens	
LZL2 XX MDIF	Medium-diffuse lens. Specify length 24 or 48 (example: LZL2 24 MDIF)

**Notes**

- 1 See Operational Data on page 2 for actual lumens.
- 2 Not available with L24, 24" fixture.
- 3 See ordering information on page 3.
- 4 Use ZSPRG for surface mounting when order this option.
- 5 Specify voltage, 120 or 277.
- 6 Output is 1400 lumens.
- 7 XX denotes length.

INDUSTRIAL

ZL2N

**PRODUCT INFO - GARAGE ENTRY LIGHT**

# Specification Sheet

**lumenfacade™**

INGROUND  
WHITE & STATIC COLORS

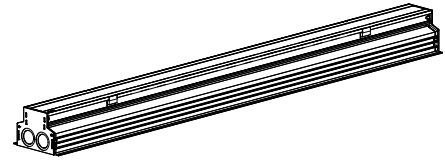
**Client** \_\_\_\_\_ **Project name** \_\_\_\_\_

**Order#** \_\_\_\_\_ **Type** \_\_\_\_\_ **Qty** \_\_\_\_\_

## FEATURES AND BENEFITS

### Physical :

- Aluminum optical chamber housing
- Anodized aluminum flush trim
- Polymer recycled PVC blackout housing
- Available in 1', 2', 3' or 4' sections
- Die cast aluminum end caps
- Stainless steel hardware
- Tempered glass lens
- Asymmetric wallwash, 10° x 10°, 10° x 60°, 30° x 60° or 60° x 60° optics
- 0°, 2.5°, 5° or 20° factory-set optical aiming options (not available for asymmetric wallwash)
- IP68 rated for up to 1' (30cm), not suitable for permanent immersion applications
- IK10 rated
- 1000kg max load, walk over only\*



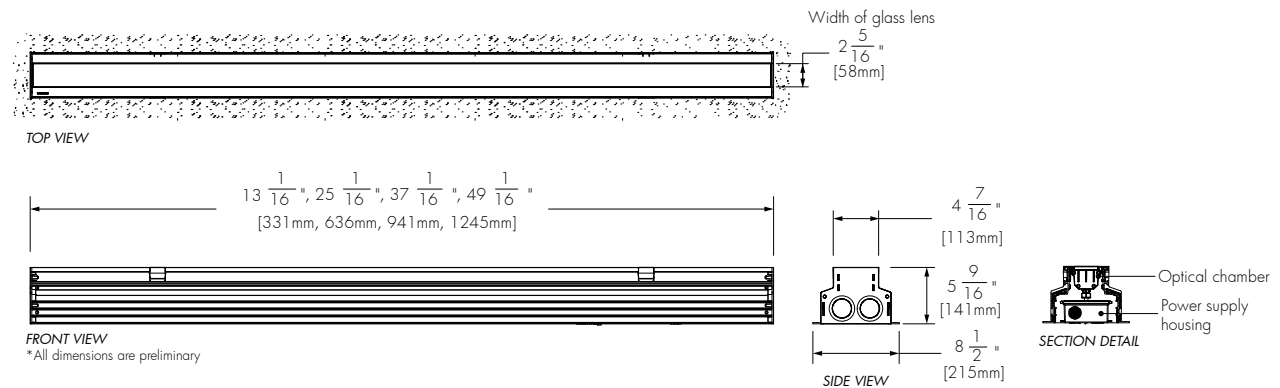
### Performance :

- Lumen maintenance 80,000 hrs [L70 @ 25°C]
- Lumen maintenance 60,000 hrs [L70 @ 50°C]
- Lumen measurements comply with LM - 79 - 08 standard
- Resolution per foot or per fixture
- Operating temperatures: -40° C to 50° C [-40F to 122F]

4ft HO 4000K 0 degree tilt setting	Delivered Output [lm]	Intensity [peak cd]
10°x10°	3,932	16,137
10°x60°	3,668	10,138
30°x60°	4,035	5,317
60°x60°	3,845	3,062

### Electrical :

- Line voltage luminaire for 100 to 277V
- Power and data in 1 cable (#16-5)
- IP68 push-lock connectors
- 5W/ft version meets ASHRAE standards for linear lighting on building facades
- 8.5W/ft Regular Output version
- 15.25W/ft High Output version
- Dimming options: 0-10V, DALI, DMX, Lumentalk or Lutron® EcoSystem® enabled



\*To meet 1000kg walk over resistance requirements, cement must support 100% of the exterior surfaces of the blackout.

1/7

© Copyright Lumenpulse 2015  
1751 Richardson, Suite 1505  
Montreal (Quebec) Canada  
H3K 1G6

1.877.937.3003  
P.514.937.3003  
F. 514.937.6289  
info@lumenpulse.com  
[www.lumenpulse.com](http://www.lumenpulse.com)

5-year limited warranty.

Consult [www.lumenpulse.com](http://www.lumenpulse.com)  
for our complete Standard Terms  
and Conditions of Sales.

**lumenpulse**

Lumenpulse reserves the right to make changes to this product at any time without prior notice and such modification shall be effective immediately.

# PRODUCT INFO - IN GRADE UPLIGHT



# SISTEMALUX

## SPECIFICATION SHEET

**RIGHELLO**  
FLAT DIFFUSER

#S.45 - 19  
MODEL FINISH

LAMPING: 1.2 W OR 2.2W SOFT LED , 24V DC





Using a special protruding diffuser and the latest generation of soft leds, the Righello can be used to create great lighting effects or indication lighting. The screwless stainless steel trim provides a minimal design.

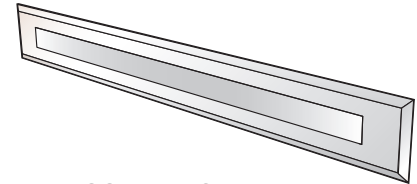
PROJECT NAME: \_\_\_\_\_

TYPE: \_\_\_\_\_ QTY: \_\_\_\_\_

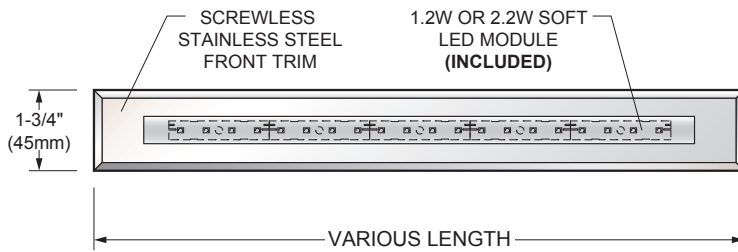
LAST UPDATE: NOVEMBER 24, 2014

**SOFT WHITE LED**

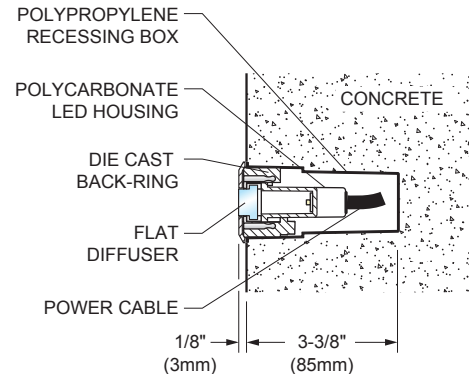
- |         |   |
|---------|---|
| 9-1/2"  | <input type="radio"/> <b>S.4507</b> - 1.2W 24V COOL WHITE 6000K<br>  |
|         | <input type="radio"/> <b>S.4507W</b> - 1.2W 24V WARM WHITE 3000K<br> |
| 14-1/2" | <input type="radio"/> <b>S.4517</b> - 2.2W 24V COOL WHITE 6000K<br>  |
|         | <input type="radio"/> <b>S.4517W</b> - 2.2W 24V WARM WHITE 3000K<br> |



ISOMETRIC VIEW



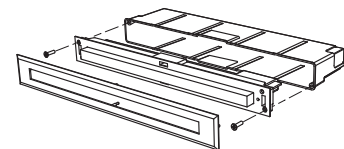
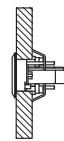
FRONT VIEW



SECTION VIEW

PLEASE CONTACT FACTORY FOR BLUE, RED, GREEN OR AMBER LED COLOR OPTION

**MOUNTING**



CLIPS SUPPLIED FOR WALL OR CEILING APPLICATIONS (2X TYP.) (THICKNESS MUST BE BETWEEN 3/16" & 1-1/8")  
 CUT-OUT: 9-1/2" VERSION: 9" X 1-3/8"  
 14-1/2" VERSION: 14" X 1-3/8"

IP 65

IK 09

USE SUITABLE REMOTE POWER SUPPLY

**METAL FINISH**

19 - STAINLESS STEEL

FOR REMOTE POWER SUPPLY CONTACT FACTORY



9320 Boul. St-Laurent,  
 suite 100, Montréal (Québec)  
 Canada H2N 1N7  
 P.: 514.523.1339 F.: 514.525.6107

SISTEMALUX GROUP

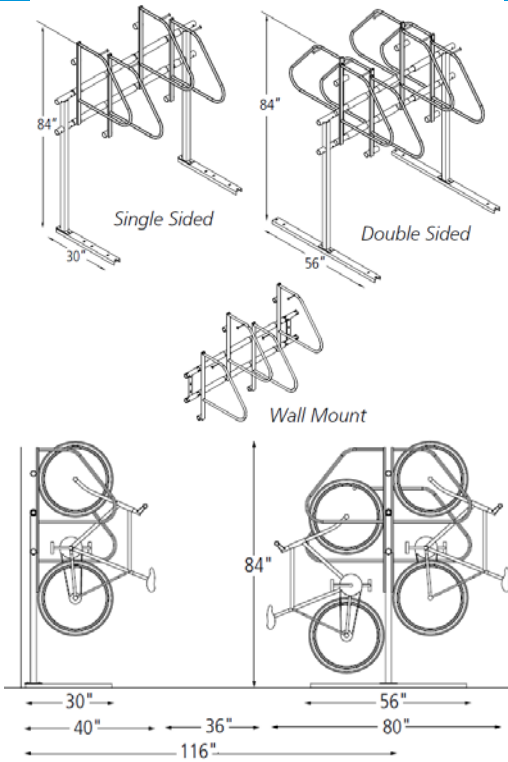
**RIGHELLO**  
FLAT DIFFUSER

DUE TO CONTINUOUS IMPROVEMENTS, THE INFORMATION HEREIN MAY BE CHANGED WITHOUT NOTICE.

MGD - R4

# PRODUCT INFO - STEP LIGHT

# Ultra Space Saver



**Product** Ultra Space Saver

**Capacity** Modular Construction  
1 Bike per arm

**Materials** Hanger is 1" diameter tube with 1/2" steel rod and retaining disk at each end.  
Upright is 2" square tube.  
Feet are AISI C3 x 4.1 galvanized steel channel.  
Crossbeams are 1.25" sched. 40 galvanized pipe (1.660" OD)  
Spacers are 2.375" OD plastic tubes with .218" wall thickness.

**Finishes** Black powder coat  
Cross bars: hot dipped galvanized  
Hanger rods: rubber coated  
Spacers: plastic

**Installation Methods** **Floor mounted** Ultra Space Savers have steel channel feet (30" for single sided and 56" for double sided units) which must be anchored to the floor. A **wall mounted** unit which contains special brackets is also available.

**Space Use & Setbacks** See Diagram

**Estimating your Bicycle Capacity** Estimating the maximum number of bikes you can park using an Ultra Space Saver in a typical rectangular space is usually fairly straight forward.

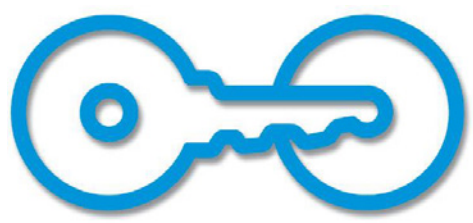
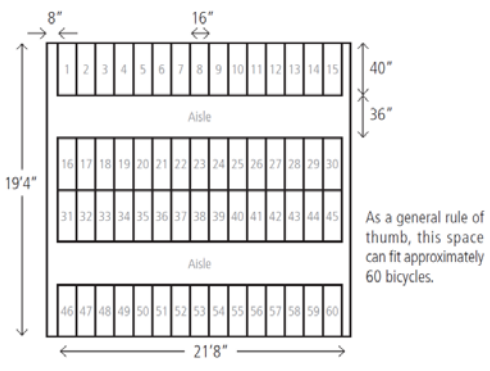
The Ultra Space Saver parks one bike every 16" with a typical bike extending out 40" from the wall. Imagine a 16"x40" block of floor space as representing each bike that can be parked. Arrange the blocks in rows, leaving a 36" aisle between rows.

If you have a large space, you may be able to fit in double rows of Ultra Space Savers. In this case you could fit 2 bikes in a 16"x80" space.



**\*Let us Help!**

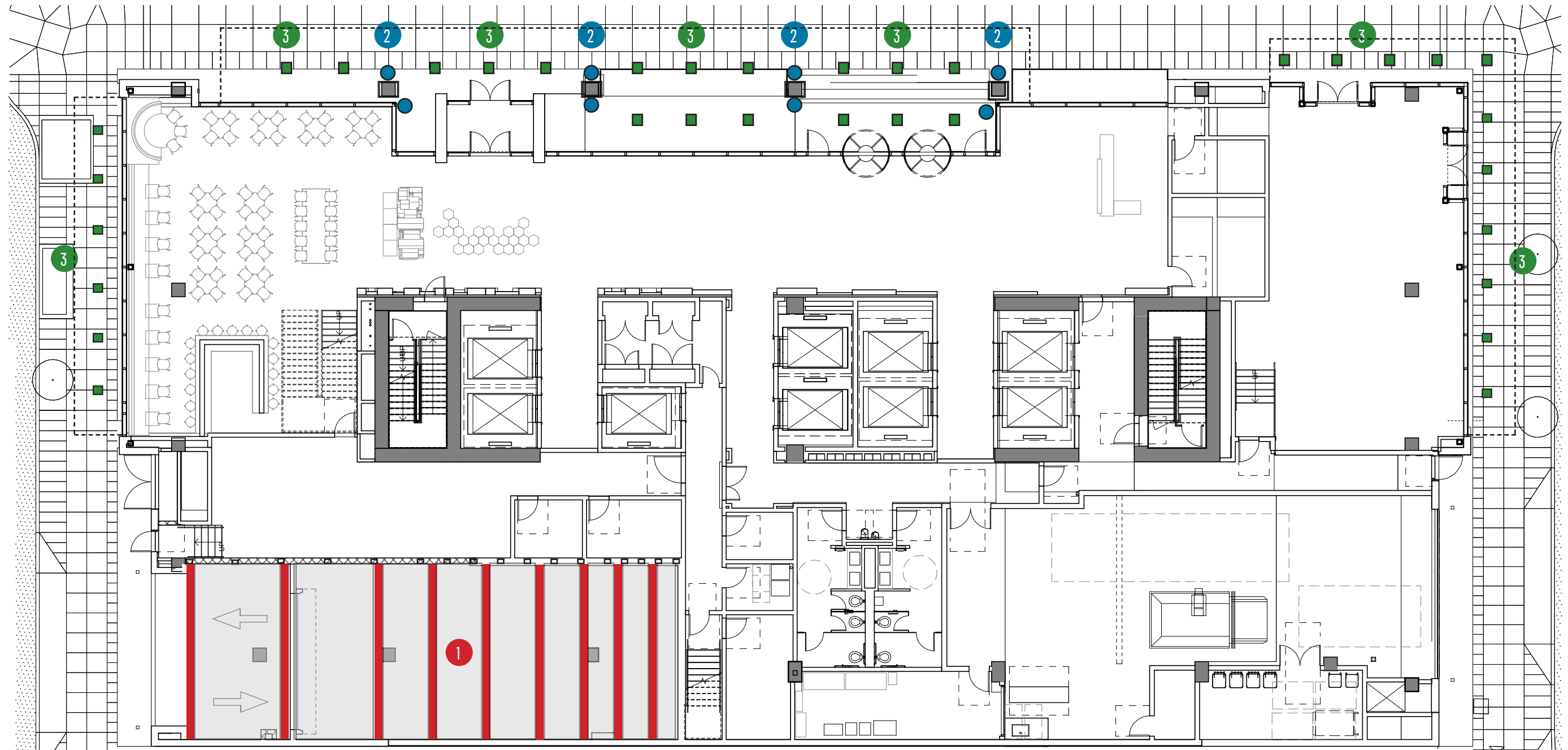
As a free service, American Bicycle Security will provide a complete CAD layout of your space. Just send us the dimensions of your room, being sure to note the location of doors, columns, etc. and let us maximize your bike storage capacity.



**American Bicycle Security Company**  
P.O. Box 7359  
Ventura, CA 93006  
Ph: (800) 245-3723 or (805) 933-3688  
Fax: (805) 933-1865  
[www.ameribike.com](http://www.ameribike.com)  
Email: [turtle@ameribike.com](mailto:turtle@ameribike.com)

## PRODUCT INFO - AMERIBIKE BICYCLE RACKS

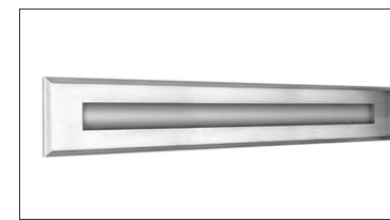




**1** **4' LINEAR LED**  
 FINISH: ALUM. HOUSING / ACRYLIC LENS  
 COLOR: 3500K  
 MOUNT: SURFACE MOUNT



**3** **4" SQUARE DOWNLIGHT**  
 FINISH: CORROSION RESIST. ALUM. PTD.  
 COLOR: 3500K  
 MOUNT: RECESSED



**5** **RECESSED STEPLIGHT**  
 FINISH: STAINLESS STEEL  
 COLOR: 3000K  
 MOUNT: RECESSED



**2** **LED UPLIGHT**  
 FINISH: POLISHED SS  
 COLOR: 3000K  
 MOUNT: FLOOR



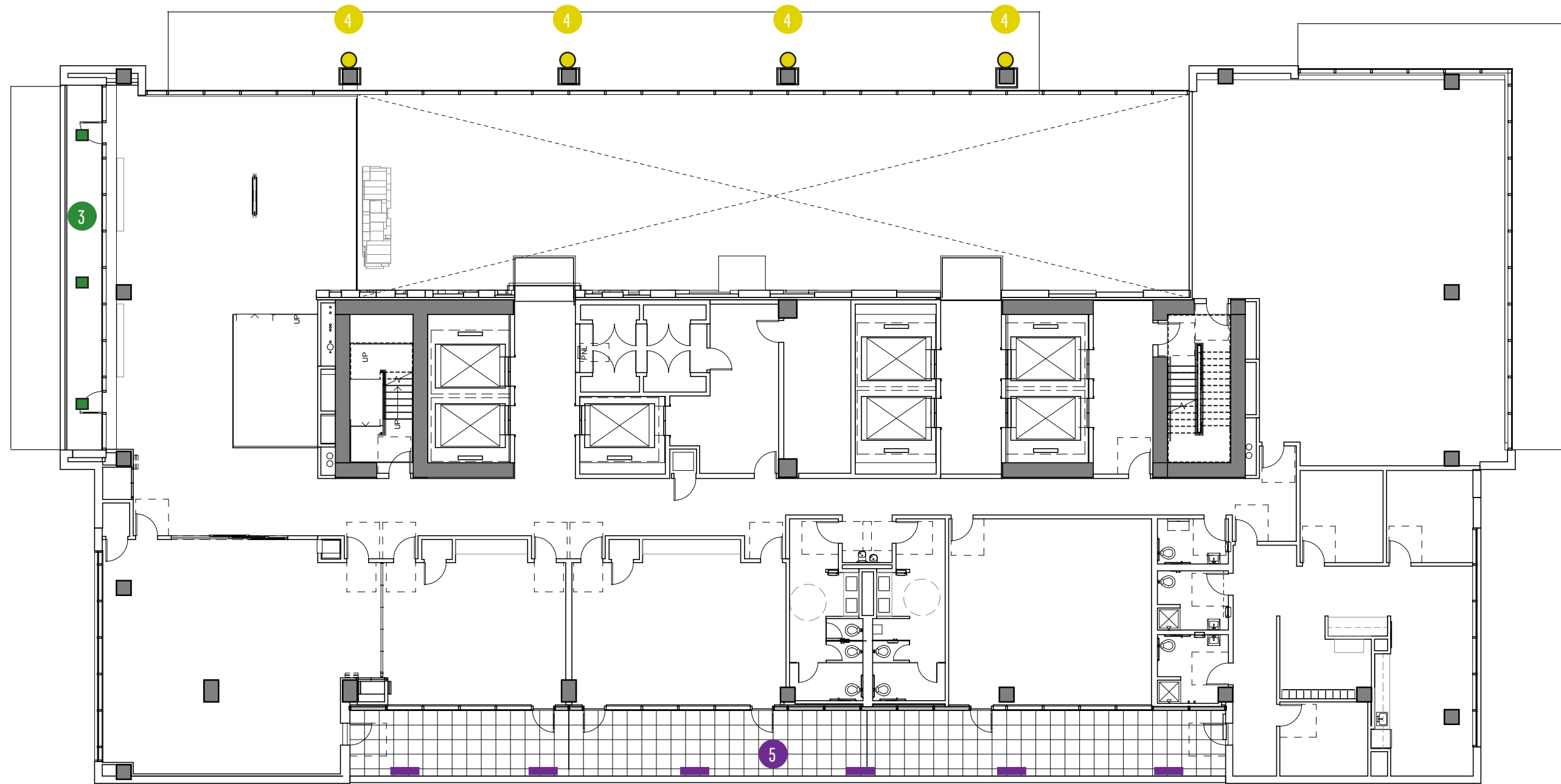
**4** **LED UPLIGHT**  
 FINISH: POLISHED SS  
 COLOR: 3000K  
 MOUNT: SURFACE MOUNT



**6** **LINEAR LED IN GRADE UPLIGHT**  
 FINISH: ALUMINUM/TEMPERED GLASS  
 COLOR: 3500 K  
 MOUNT: IN GRADE



# LIGHTING PLAN - LEVEL 1



**1** 4' LINEAR LED  
 FINISH: ALUM. HOUSING / ACRYLIC LENS  
 COLOR: 3500K  
 MOUNT: SURFACE MOUNT



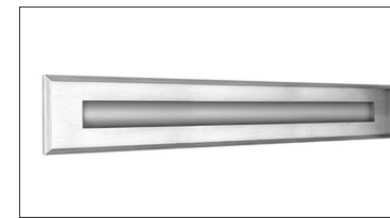
**2** LED UPLIGHT  
 FINISH: POLISHED SS  
 COLOR: 3000K  
 MOUNT: FLOOR



**3** 4" SQUARE DOWNLIGHT  
 FINISH: CORROSION RESIST. ALUM. PTD.  
 COLOR: 3500K  
 MOUNT: RECESSED



**4** LED UPLIGHT  
 FINISH: POLISHED SS  
 COLOR: 3000K  
 MOUNT: SURFACE MOUNT



**5** RECESSED STEPLIGHT  
 FINISH: STAINLESS STEEL  
 COLOR: 300K  
 MOUNT: RECESSED

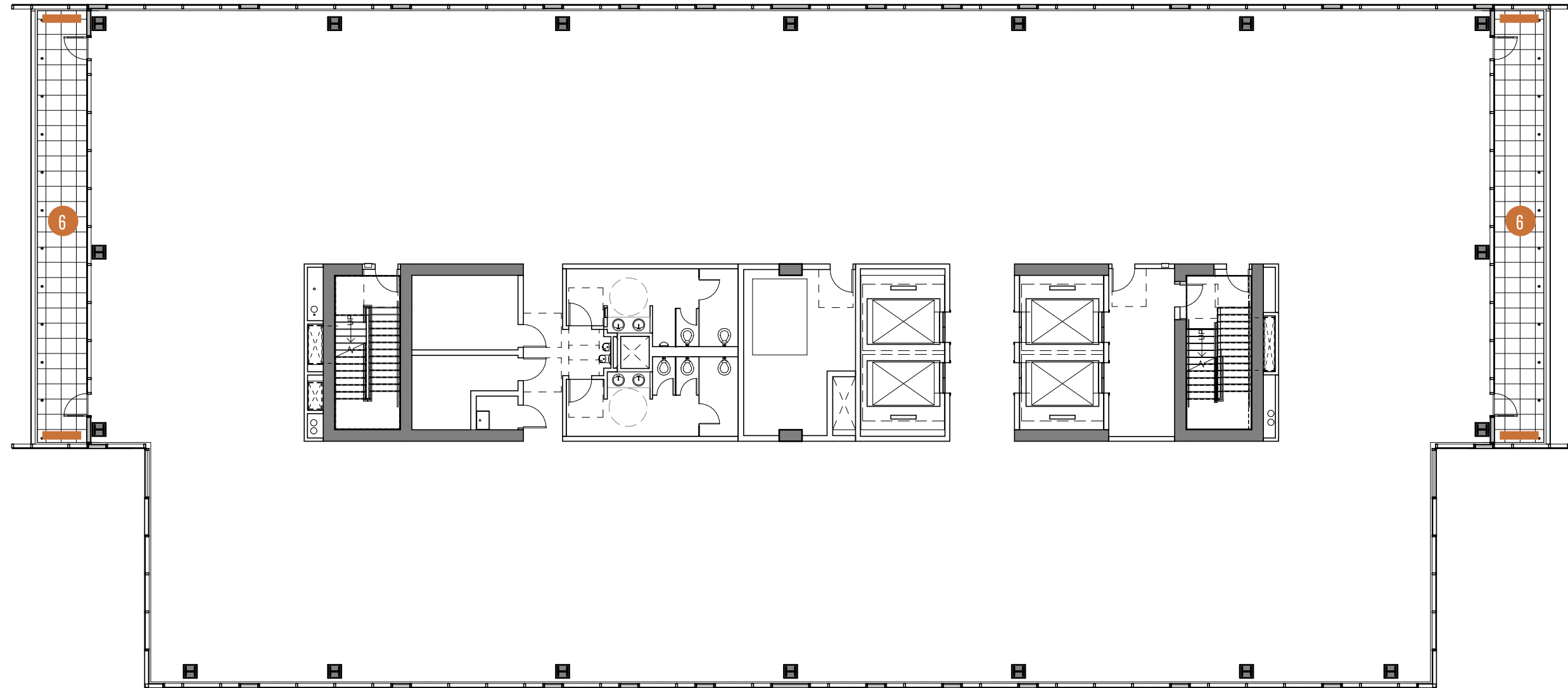


**6** LINEAR LED IN GRADE UPLIGHT  
 FINISH: ALUMINUM/TEMPERED GLASS  
 COLOR: 3500 K  
 MOUNT: IN GRADE



# LIGHTING PLAN - LEVEL 2





**1** **4' LINEAR LED**  
 FINISH: ALUM. HOUSING / ACRYLIC LENS  
 COLOR: 3500K  
 MOUNT: SURFACE MOUNT



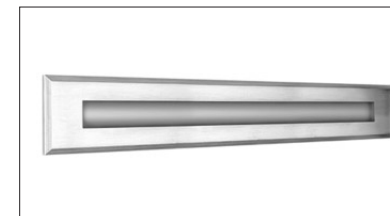
**2** **LED UPLIGHT**  
 FINISH: POLISHED SS  
 COLOR: 3000K  
 MOUNT: FLOOR



**3** **4" SQUARE DOWNLIGHT**  
 FINISH: CORROSION RESIST. ALUM. PTD.  
 COLOR: 3500K  
 MOUNT: RECESSED



**4** **LED UPLIGHT**  
 FINISH: POLISHED SS  
 COLOR: 3000K  
 MOUNT: SURFACE MOUNT



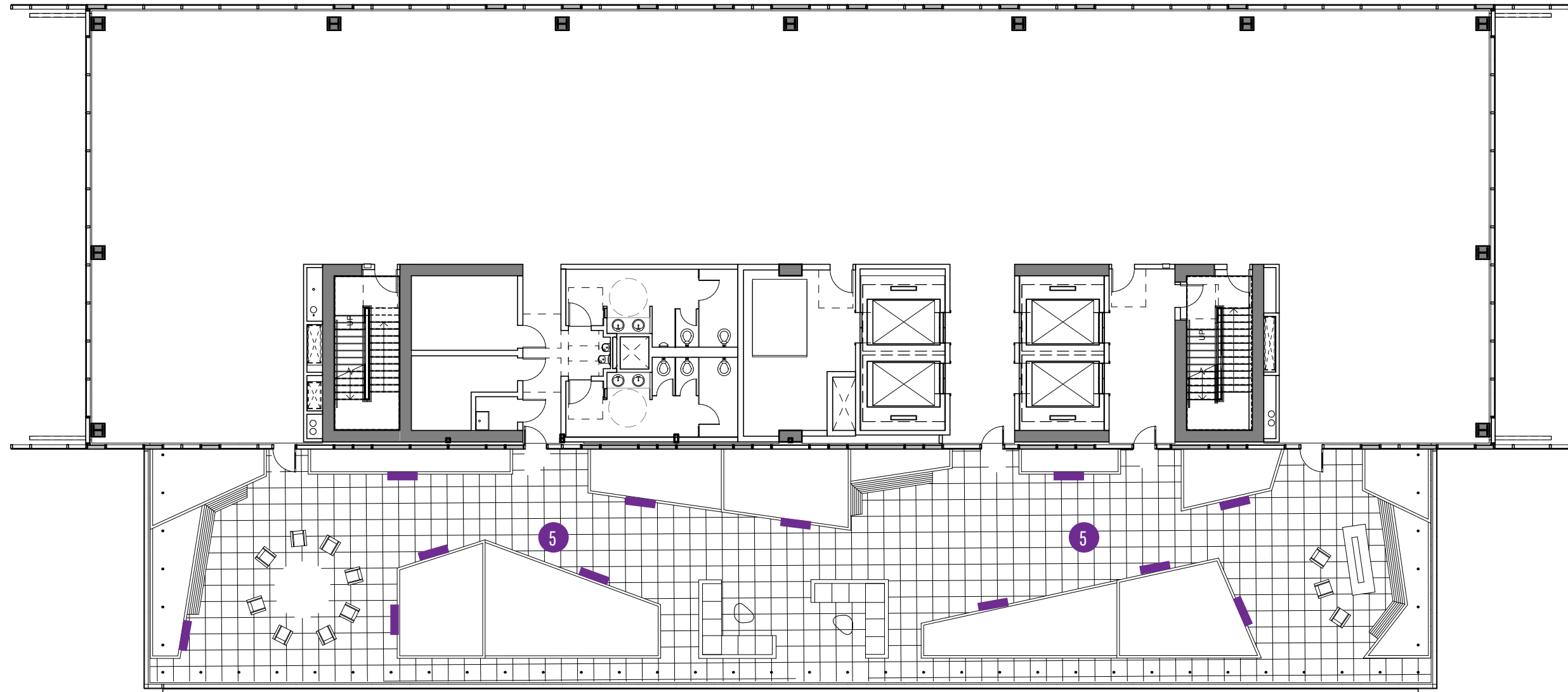
**5** **RECESSED STEPLIGHT**  
 FINISH: STAINLESS STEEL  
 COLOR: 300K  
 MOUNT: RECESSED



**6** **LINEAR LED IN GRADE UPLIGHT**  
 FINISH: ALUMINUM/TEMPERED GLASS  
 COLOR: 3500 K  
 MOUNT: IN GRADE



# LIGHTING PLAN - LEVEL 17



**1** **4' LINEAR LED**  
 FINISH: ALUM. HOUSING / ACRYLIC LENS  
 COLOR: 3500K  
 MOUNT: SURFACE MOUNT



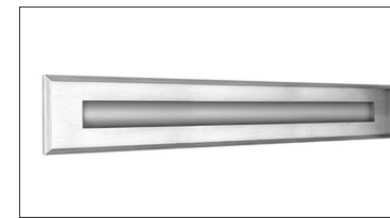
**2** **LED UPLIGHT**  
 FINISH: POLISHED SS  
 COLOR: 3000K  
 MOUNT: FLOOR



**3** **4" SQUARE DOWNLIGHT**  
 FINISH: CORROSION RESIST. ALUM. PTD.  
 COLOR: 3500K  
 MOUNT: RECESSED



**4** **LED UPLIGHT**  
 FINISH: POLISHED SS  
 COLOR: 3000K  
 MOUNT: SURFACE MOUNT



**5** **RECESSED STEPLIGHT**  
 FINISH: STAINLESS STEEL  
 COLOR: 300K  
 MOUNT: RECESSED

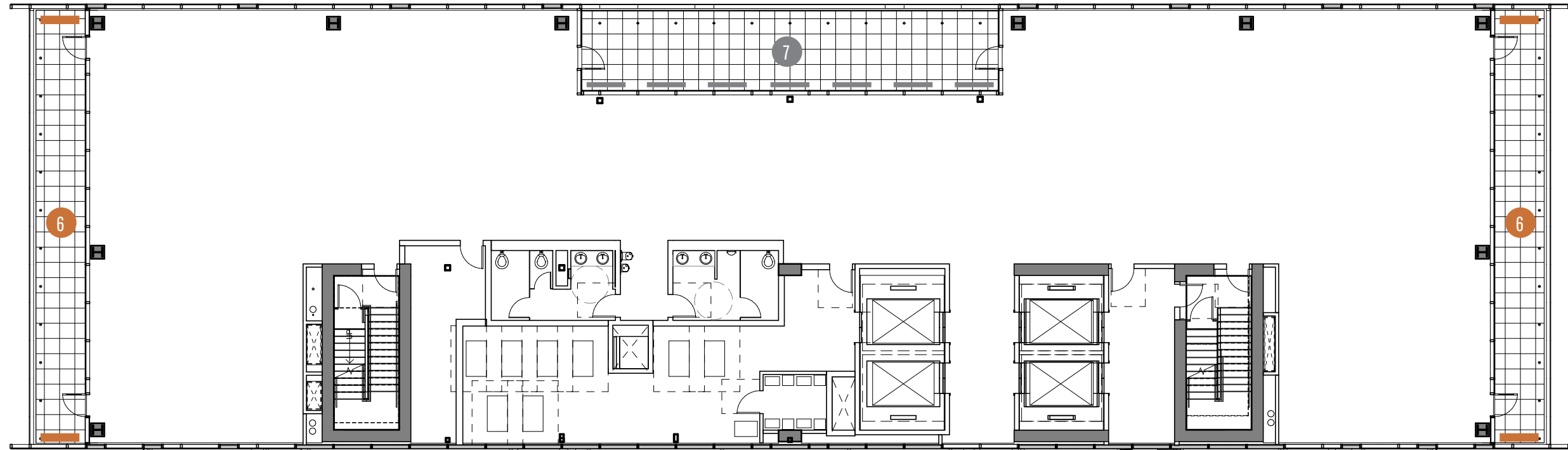


**6** **LINEAR LED IN GRADE UPLIGHT**  
 FINISH: ALUMINUM/TEMPERED GLASS  
 COLOR: 3500 K  
 MOUNT: IN GRADE



# LIGHTING PLAN - LEVEL 18





**1** **4' LINEAR LED**  
 FINISH: ALUM. HOUSING / ACRYLIC LENS  
 COLOR: 3500K  
 MOUNT: SURFACE MOUNT



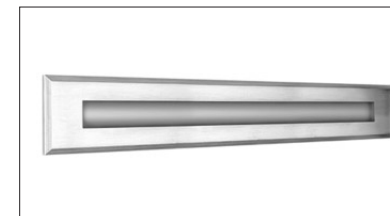
**2** **LED UPLIGHT**  
 FINISH: POLISHED SS  
 COLOR: 3000K  
 MOUNT: FLOOR



**3** **4" SQUARE DOWNLIGHT**  
 FINISH: CORROSION RESIST. ALUM. PTD.  
 COLOR: 3500K  
 MOUNT: RECESSED



**7** **PENDANT MOUNT LED UPLIGHT**  
 FINISH: POLISHED SS  
 COLOR: 3000K  
 MOUNT: PENDANT MOUNT



**5** **RECESSED STEPLIGHT**  
 FINISH: STAINLESS STEEL  
 COLOR: 300K  
 MOUNT: RECESSED



**6** **LINEAR LED IN GRADE UPLIGHT**  
 FINISH: ALUMINUM/TEMPERED GLASS  
 COLOR: 3500 K  
 MOUNT: IN GRADE



# LIGHTING PLAN - LEVEL 19