



# Deconstruction Grant and Construction Waste Reduction Proposal

**Alisa Kane and Shawn Wood**  
**Planning and Sustainability Commission**  
**January 26, 2016**



Bureau of Planning and Sustainability  
Innovation. Collaboration. Practical Solutions.







# Concerns about Demolition

Waste/Carbon Emissions

Hazardous Materials

Preservation

Affordability

Compatibility

Delay/Notification



# Demolition vs Deconstruction





## Demolition Concerns

## Deconstruction Benefits

Waste/Carbon Emissions

Hazardous Materials

Preservation

Affordability

BPS

Compatibility

BDS

Delay/Notification

Job Training





# Deconstruction Considerations





# Deconstruction Advisory Group (DAG)



# Deconstruction Grants

**Removing a house?**

Salvage valuable material for reuse through deconstruction

Grant funds are available for deconstruction projects

- Applications accepted beginning Sept. 8, 2015.
- Visit [www.ExploreDecon.com](http://www.ExploreDecon.com) for application instructions.

**Deconstruction benefits:**

- Our community.
- Our environment.
- Our economy.

[www.ExploreDecon.com](http://www.ExploreDecon.com)

Bureau of Planning and Sustainability  
Innovation. Collaboration. Practical Solutions.  
City of Portland, Oregon  
Charlie Hahn, Mayor • Susan Anderson, Director

- Grants for full and partial deconstruction
- \$2,500 for full
- \$500 for partial
- 8 grants approved to date

Find out more at  
[ExploreDecon.com](http://ExploreDecon.com)



# Deconstruction Requirement

On February 17, City Council to consider a resolution that directs BPS to create code language that:

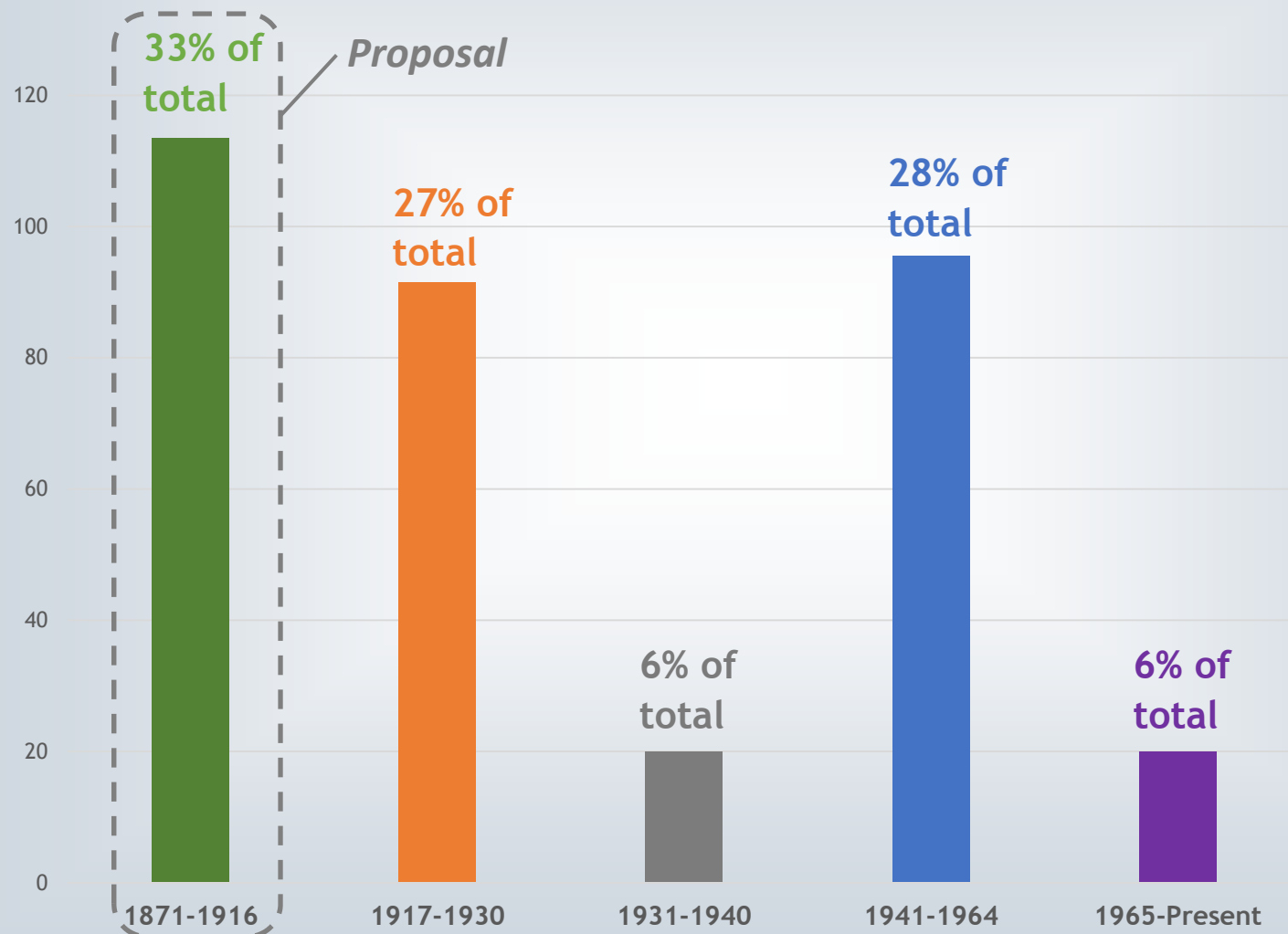
Requires projects seeking a demolition permit for a one or two-family structure (house or duplex) to fully deconstruct that structure if:

- The structure was built in 1916 or earlier; or
- The structure is a designated historic resource



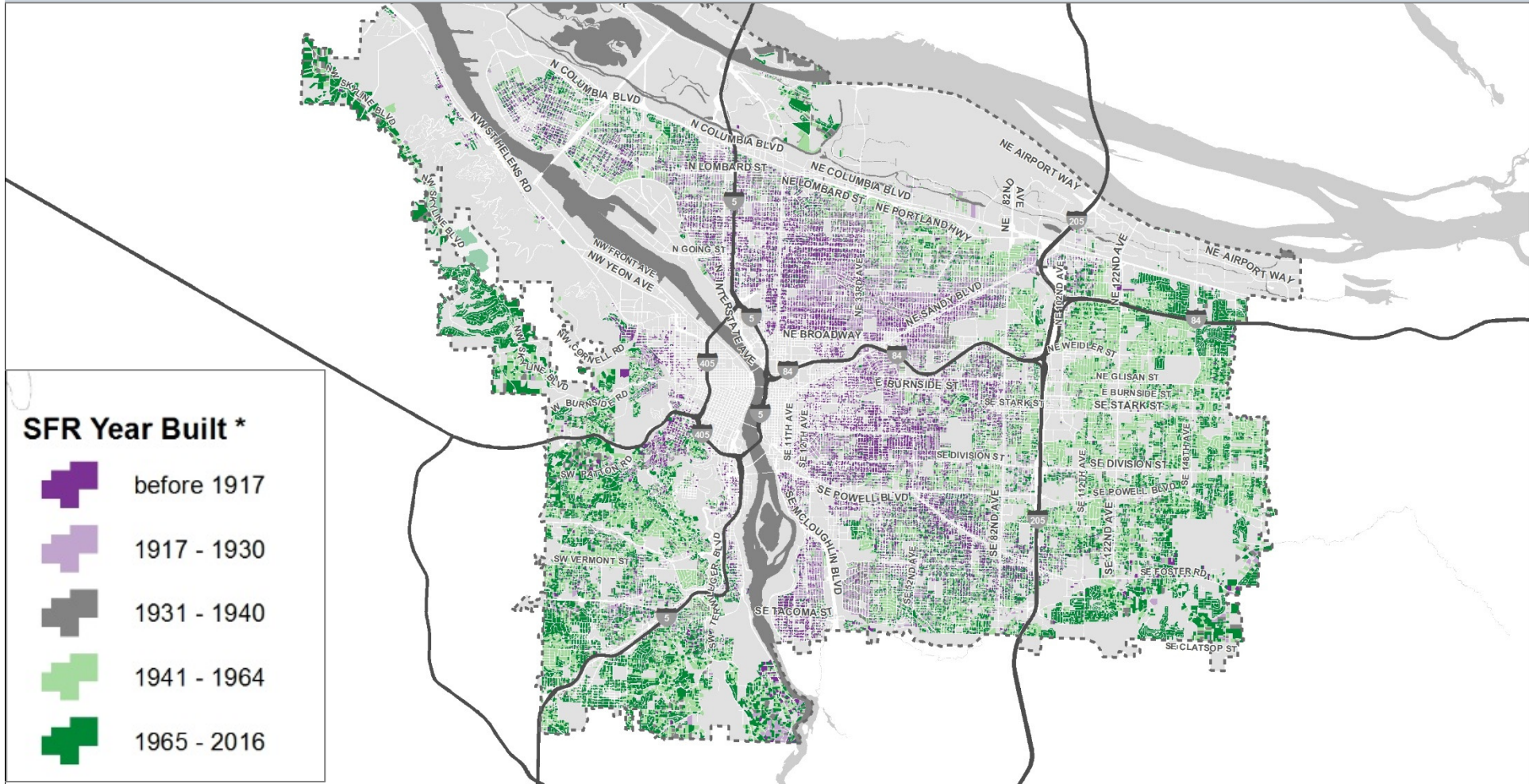
# Demolitions by Age of Structure

Annual House Demo Permits by Year Built (341 Total)





# Year Built (Residential)



City of Portland | SFR Year Built

January 25, 2016

The information on this map was derived from City of Portland GIS databases. Care was taken in the creation of this map but it is provided "as is". The City of Portland cannot accept any responsibility for error, omissions or positional accuracy.

\*Note: SFR is defined here as parcels with a property code description value of 'Residential Improved' assigned by Multnomah County.



Bureau of Planning and Sustainability  
Innovation. Collaboration. Practical Solutions.  
City of Portland, Oregon  
Charlie Hiler, Mayor - Susan Anderson, Director



Bureau of Planning and Sustainability  
Innovation. Collaboration. Practical Solutions.



# Training and Certification\*

- Certification for firms
- Workforce training
- Partnership
- Priorities



\*Coming soon!

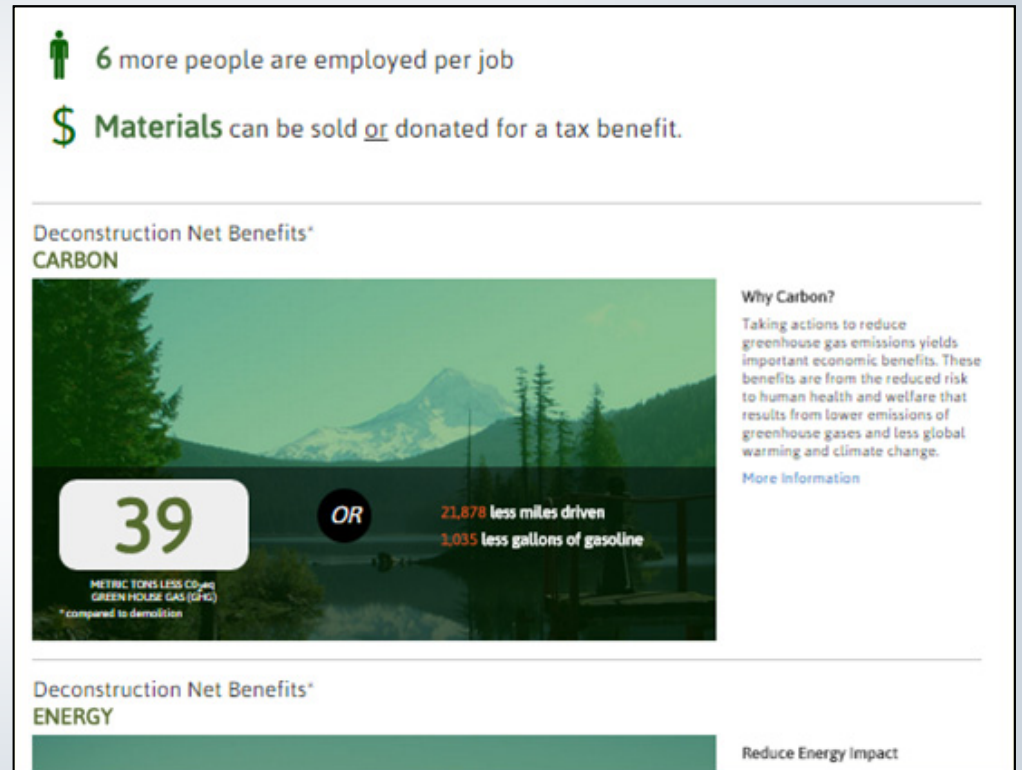
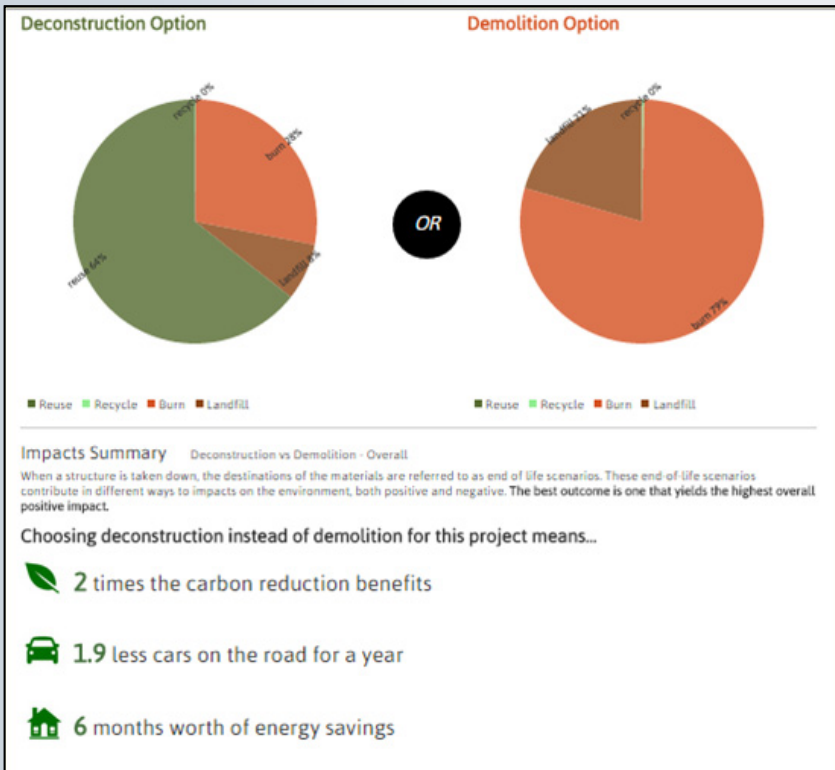




# Markets for Materials



# Free Salvage Assessments with Deconstruction Calculator\*



\*Coming soon!



# Hill Military Academy (1945)

