



aerial of existing

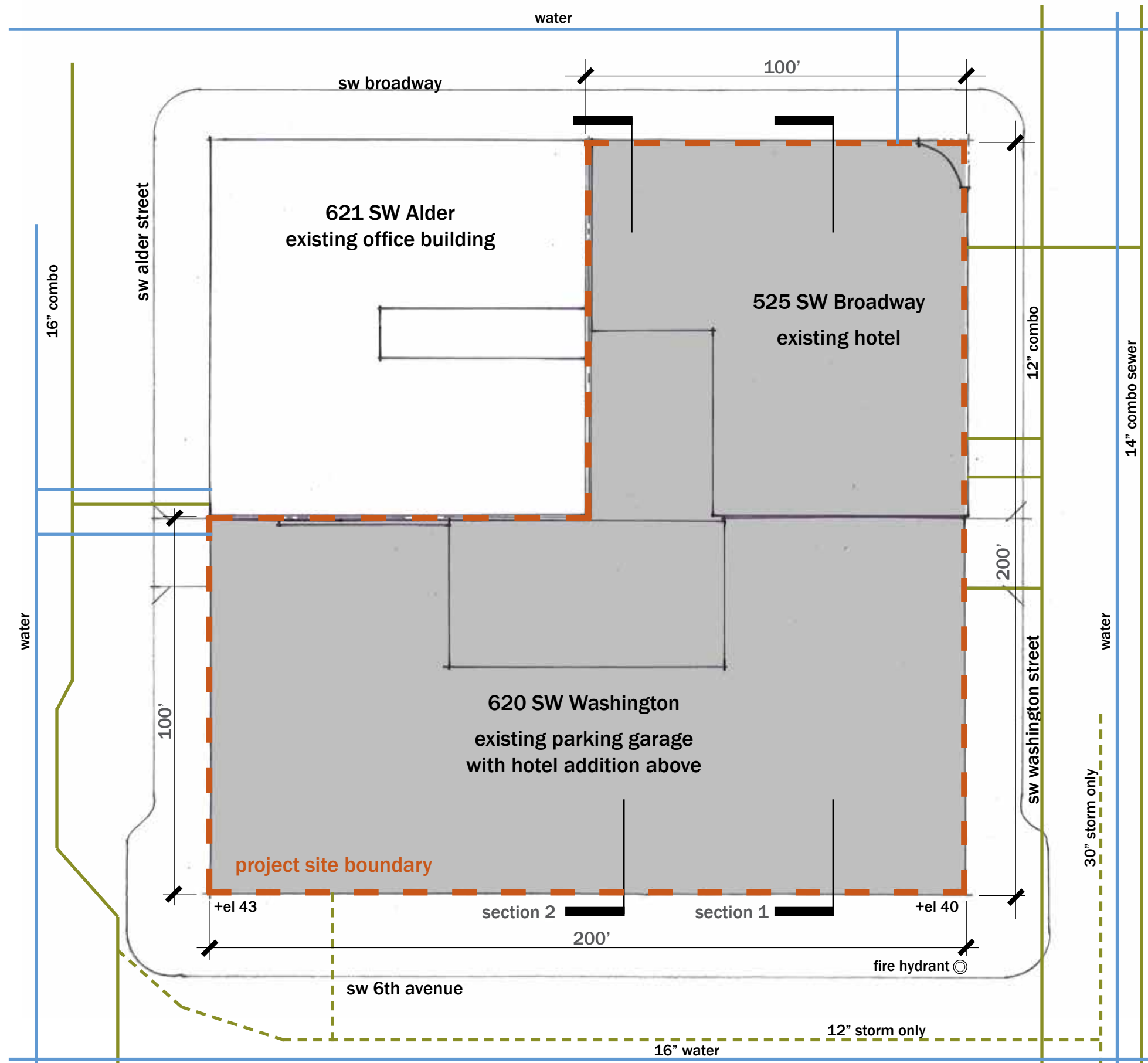


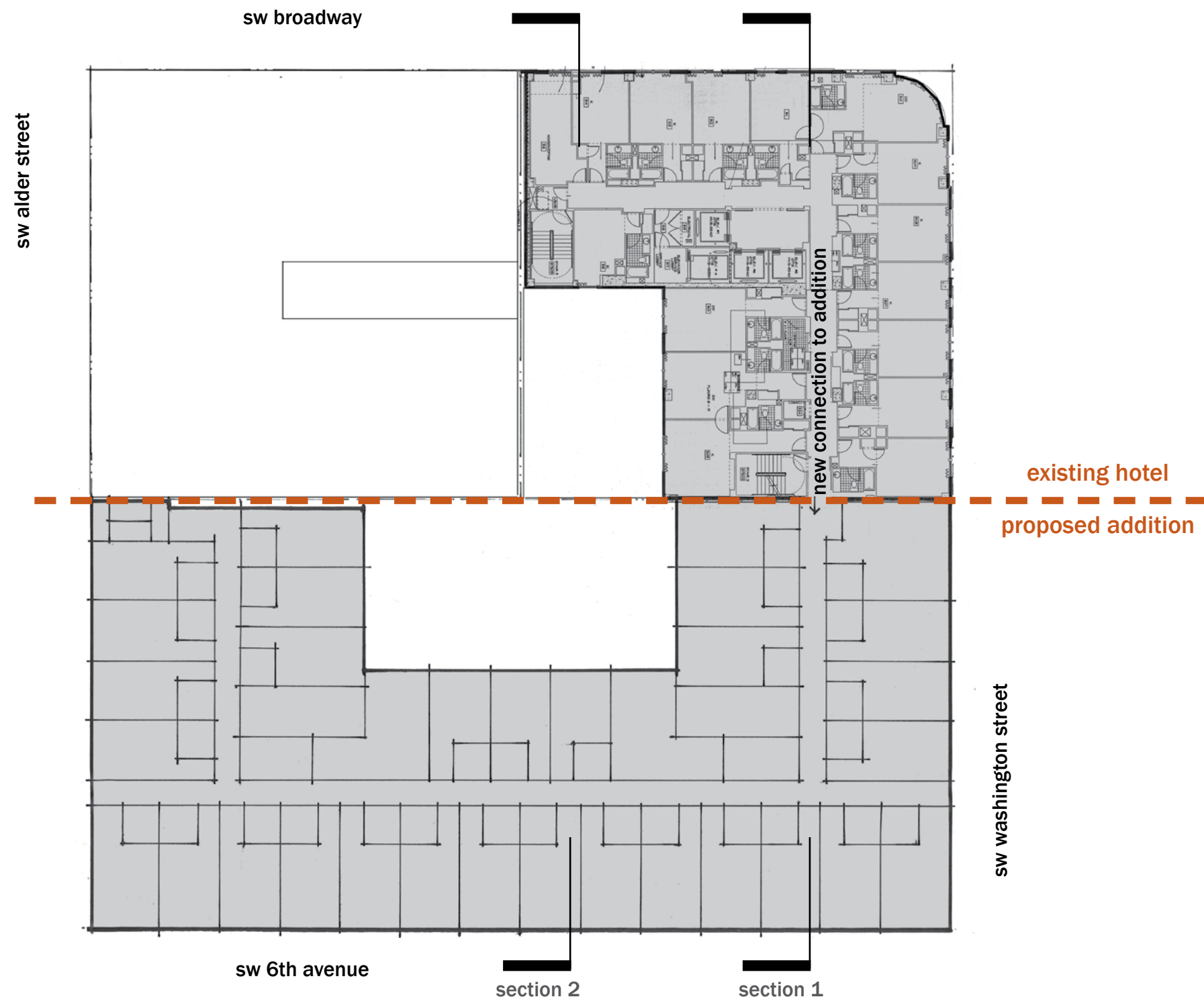
525 SW Broadway: existing hotel

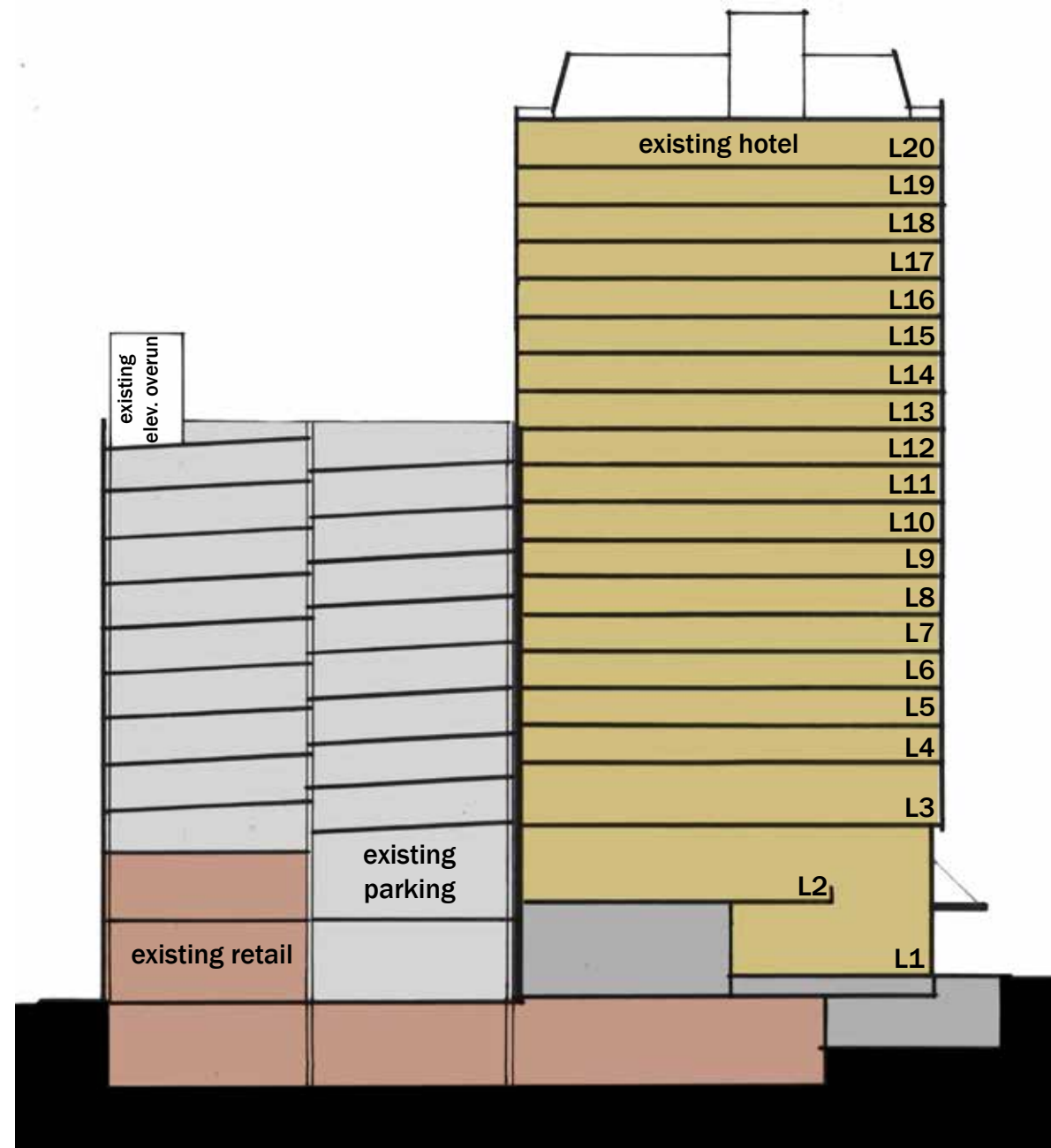


620 SW Washington: existing parking garage

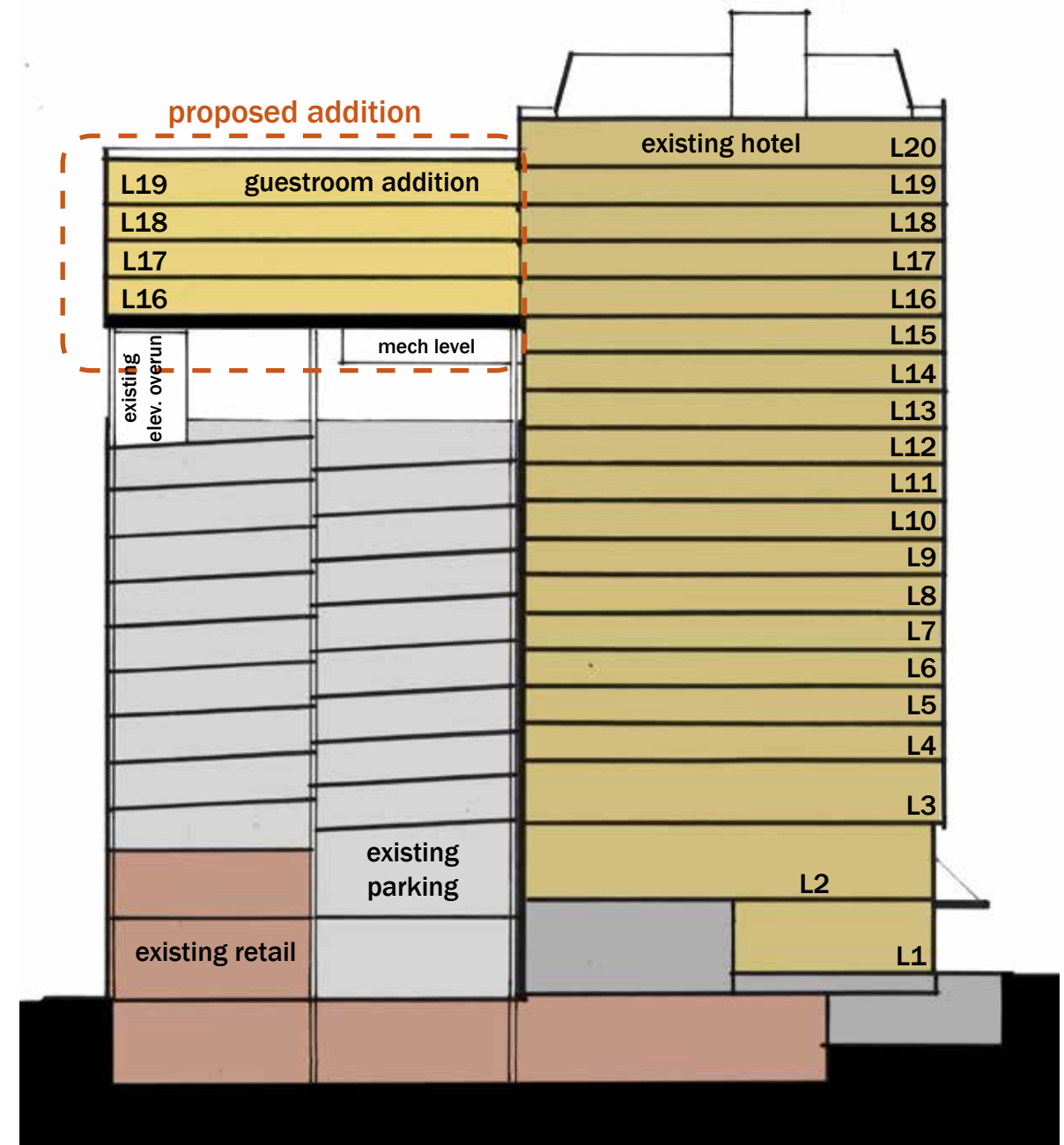




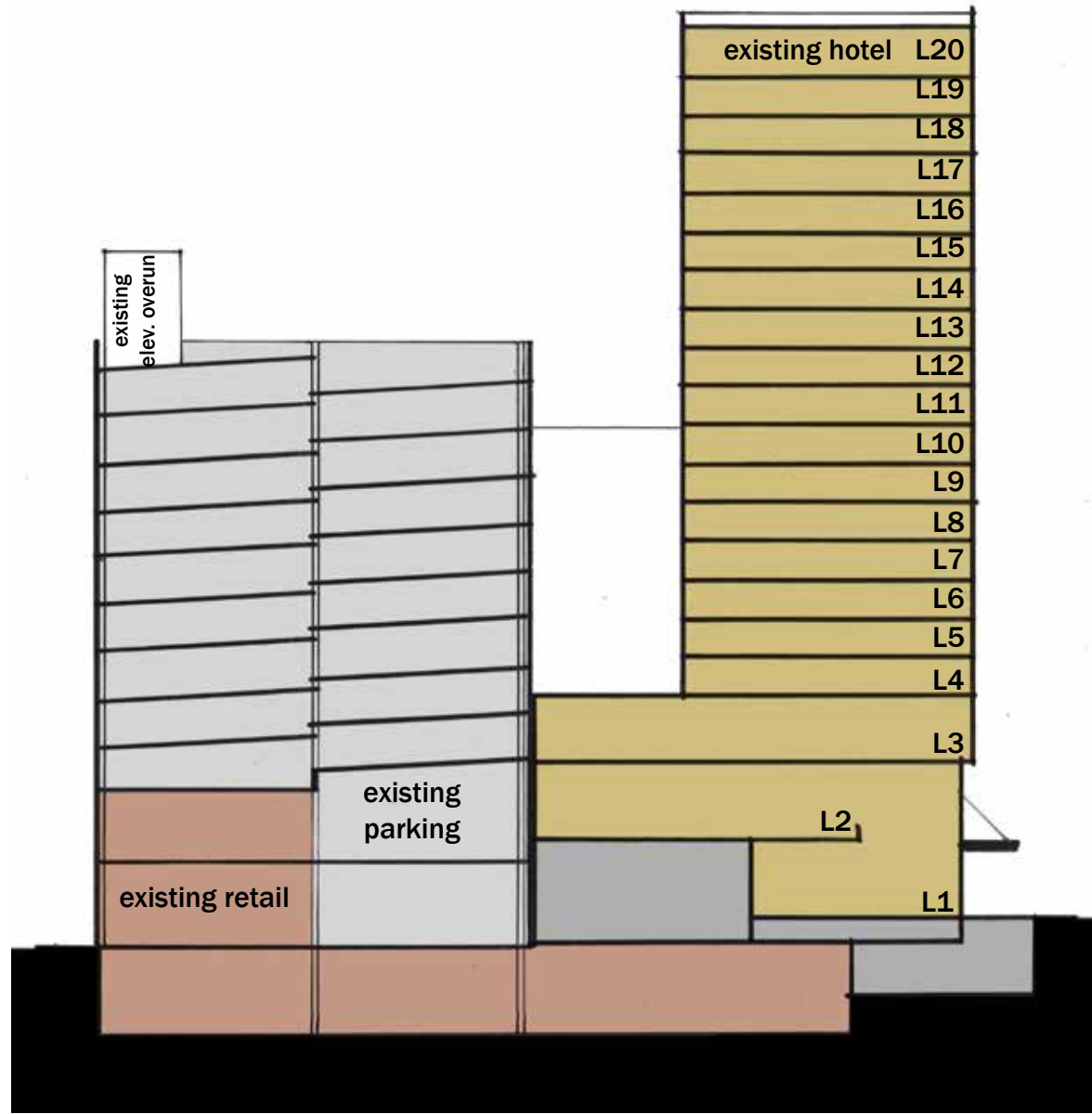




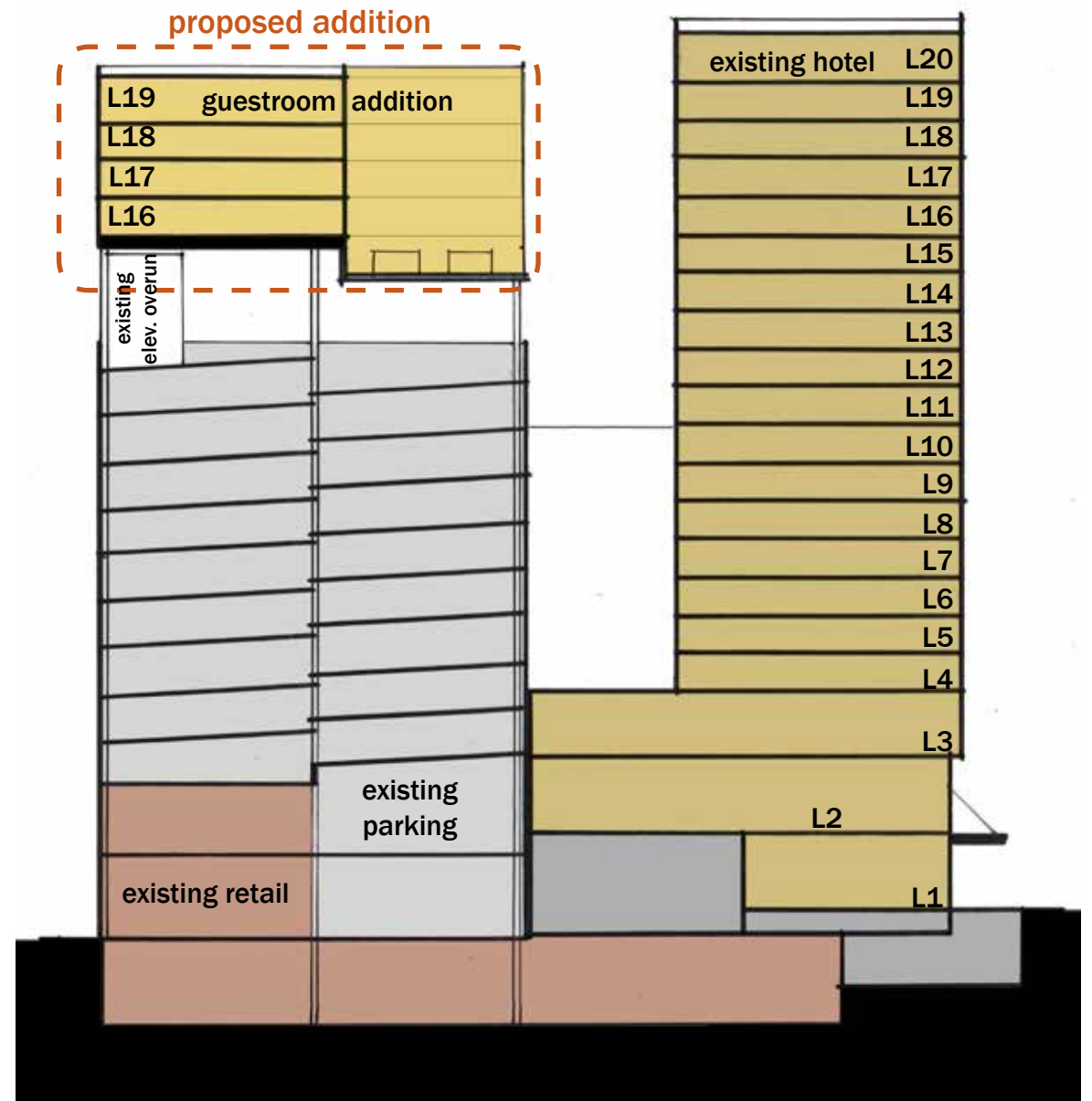
section 1 - existing



section 1 - proposed

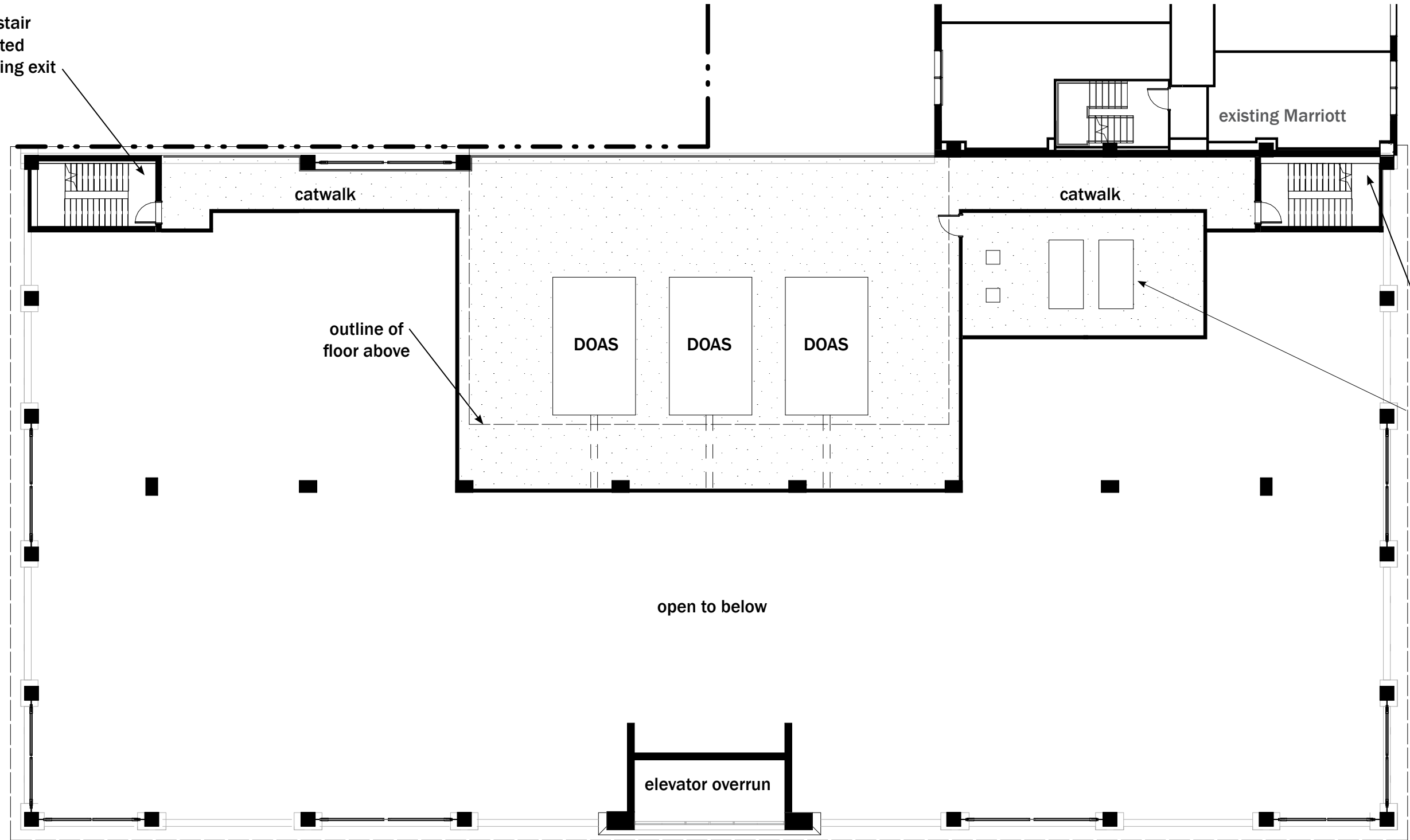


section 2 - existing



section 2 - proposed

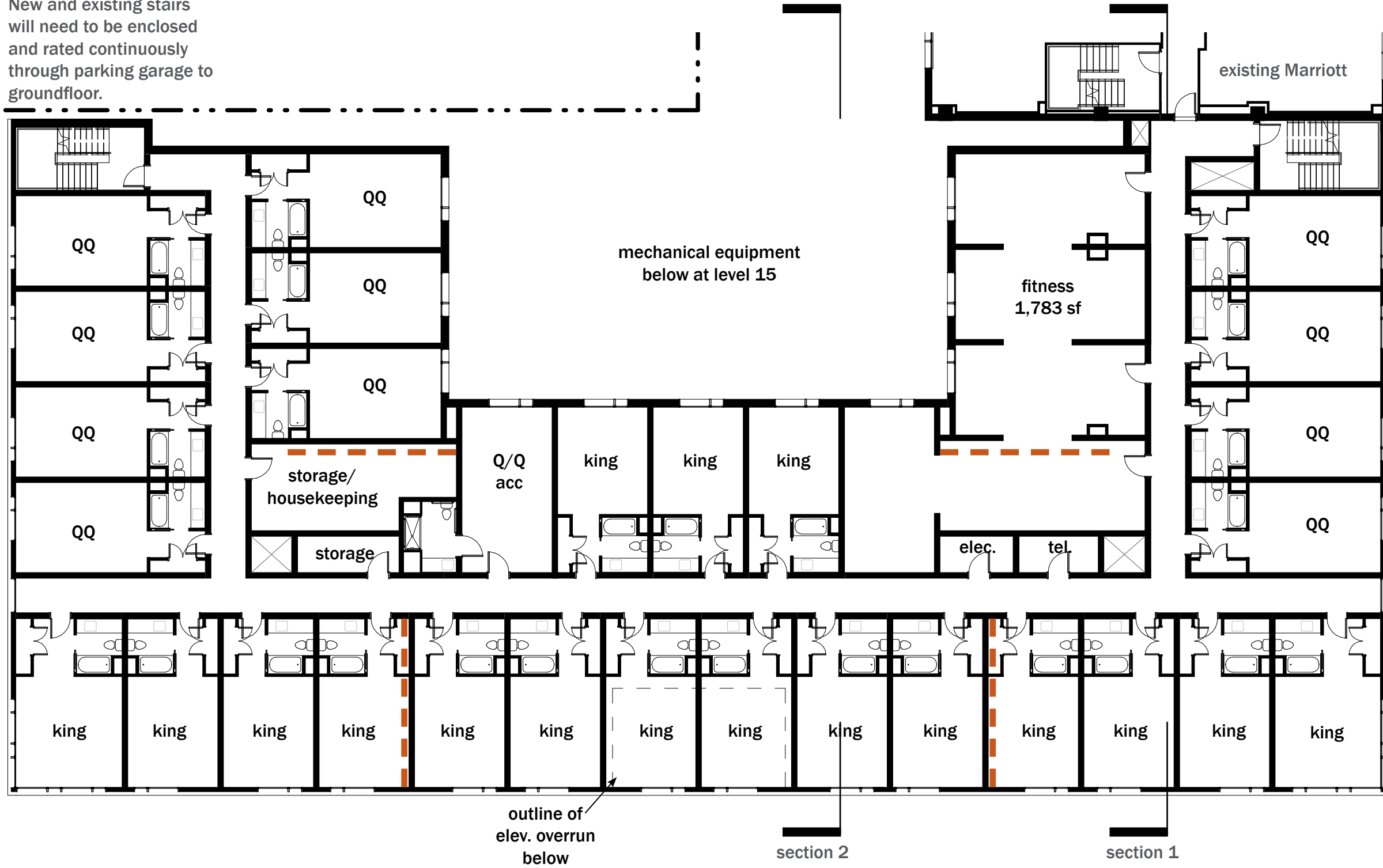
new and existing stair
to be in 2 hour rated
enclosure to building exit



new and existing stair
to be in 2 hour rated
enclosure to building exit

new hw boilers and
storage tanks

New and existing stairs will need to be enclosed and rated continuously through parking garage to groundfloor.



— — — — potential lateral bracing location

New and existing stairs will need to be enclosed and rated continuously through parking garage to groundfloor.

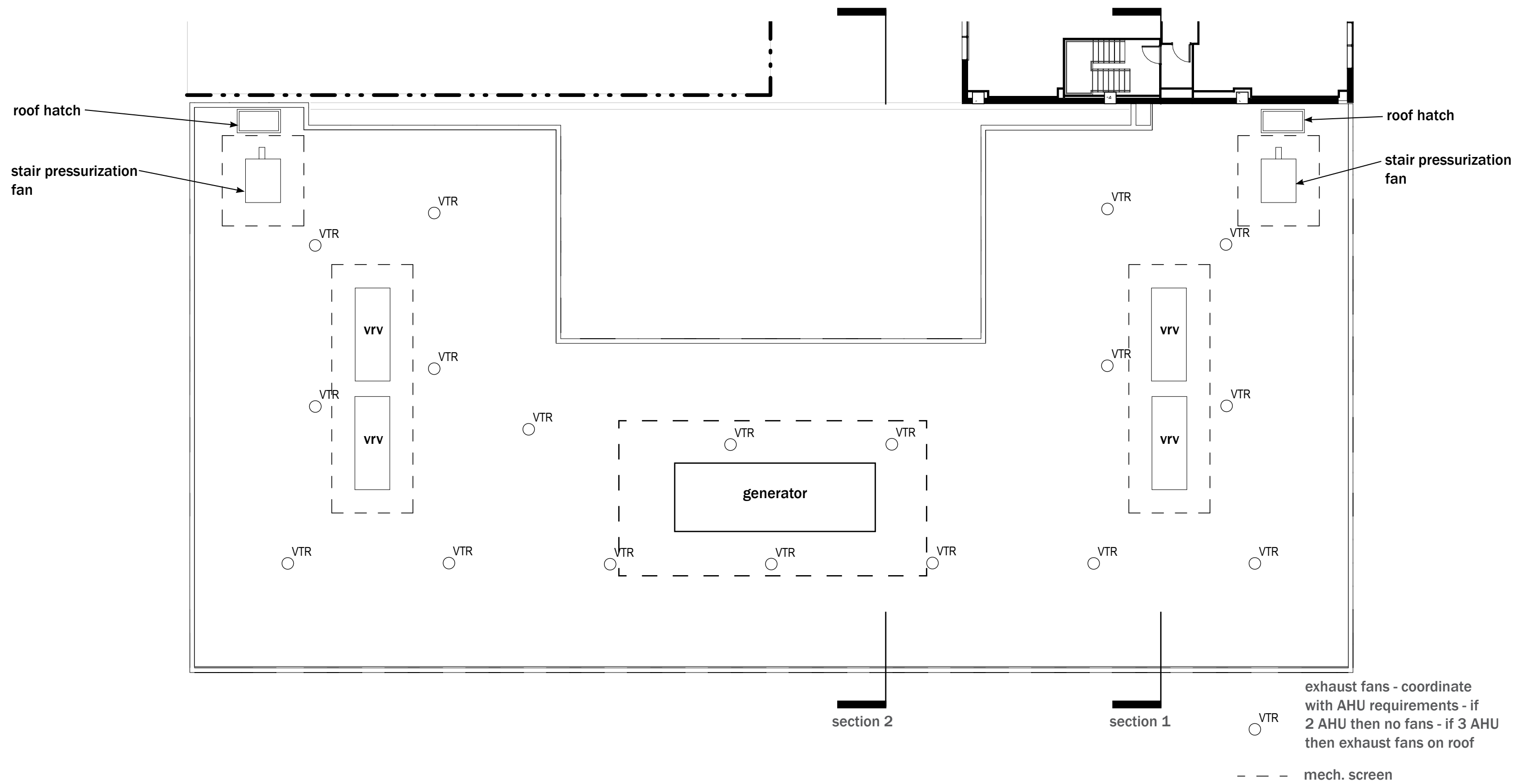


— — — — — potential lateral bracing location

New and existing stairs will need to be enclosed and rated continuously through parking garage to groundfloor.



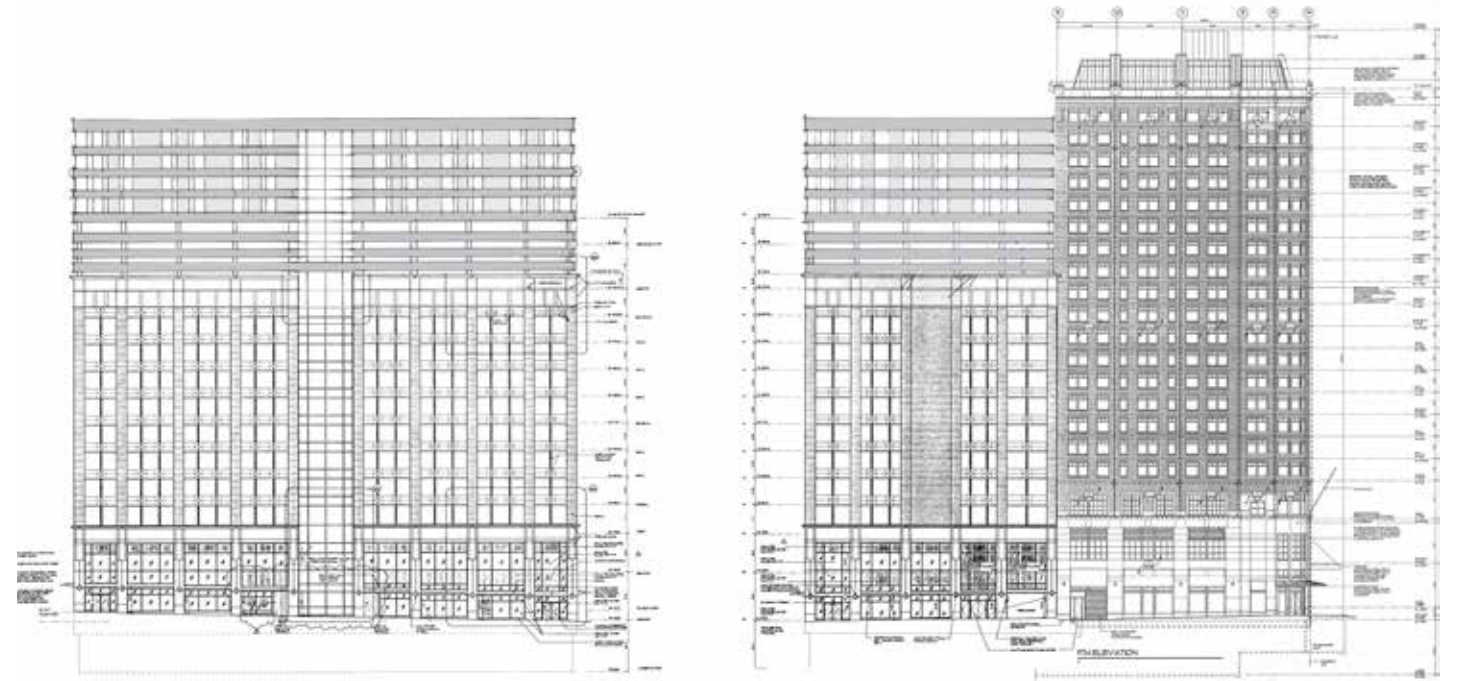
— — — — — potential lateral bracing location







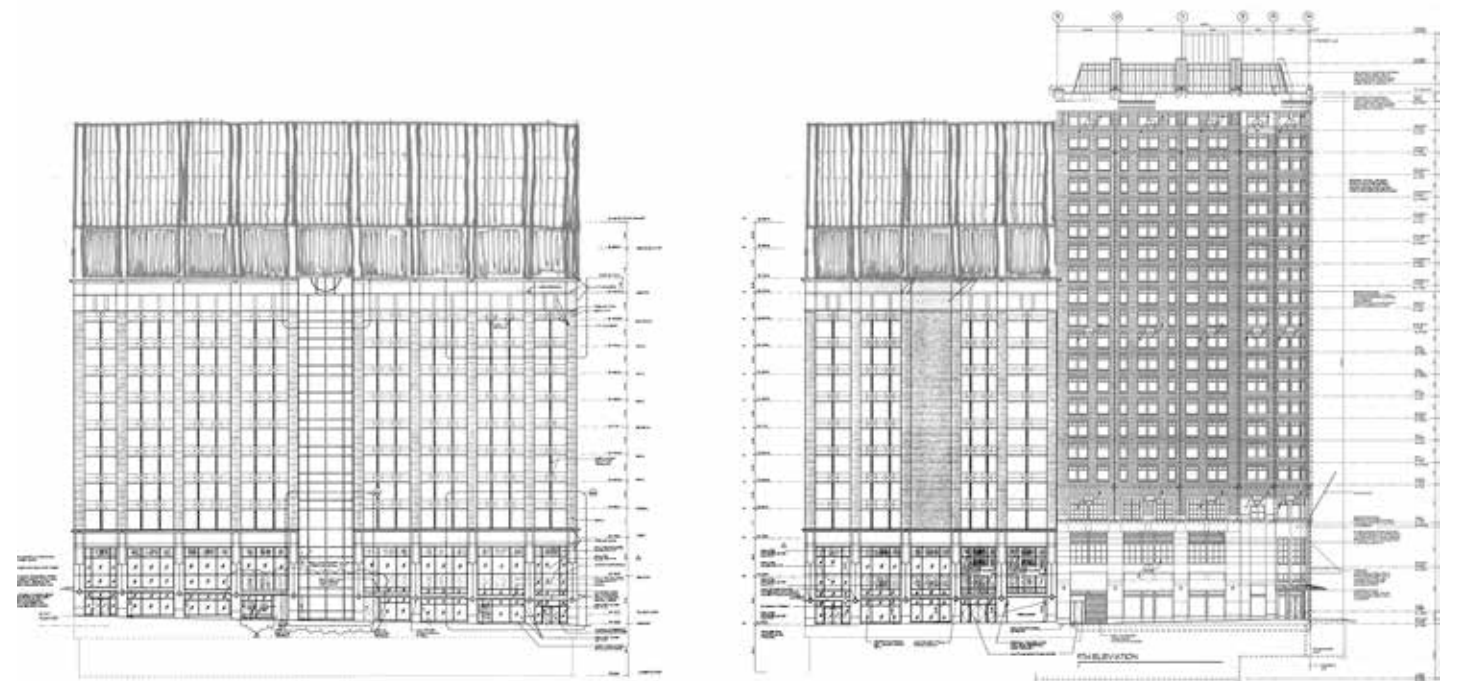
same



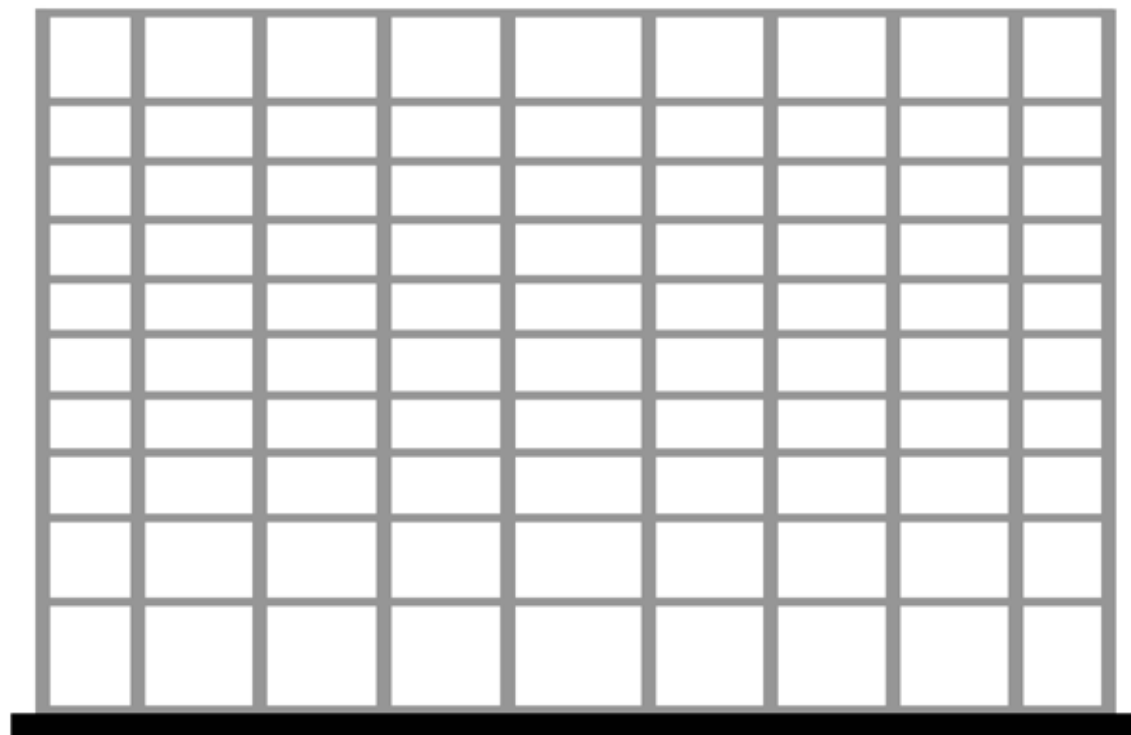
similar - horizontal



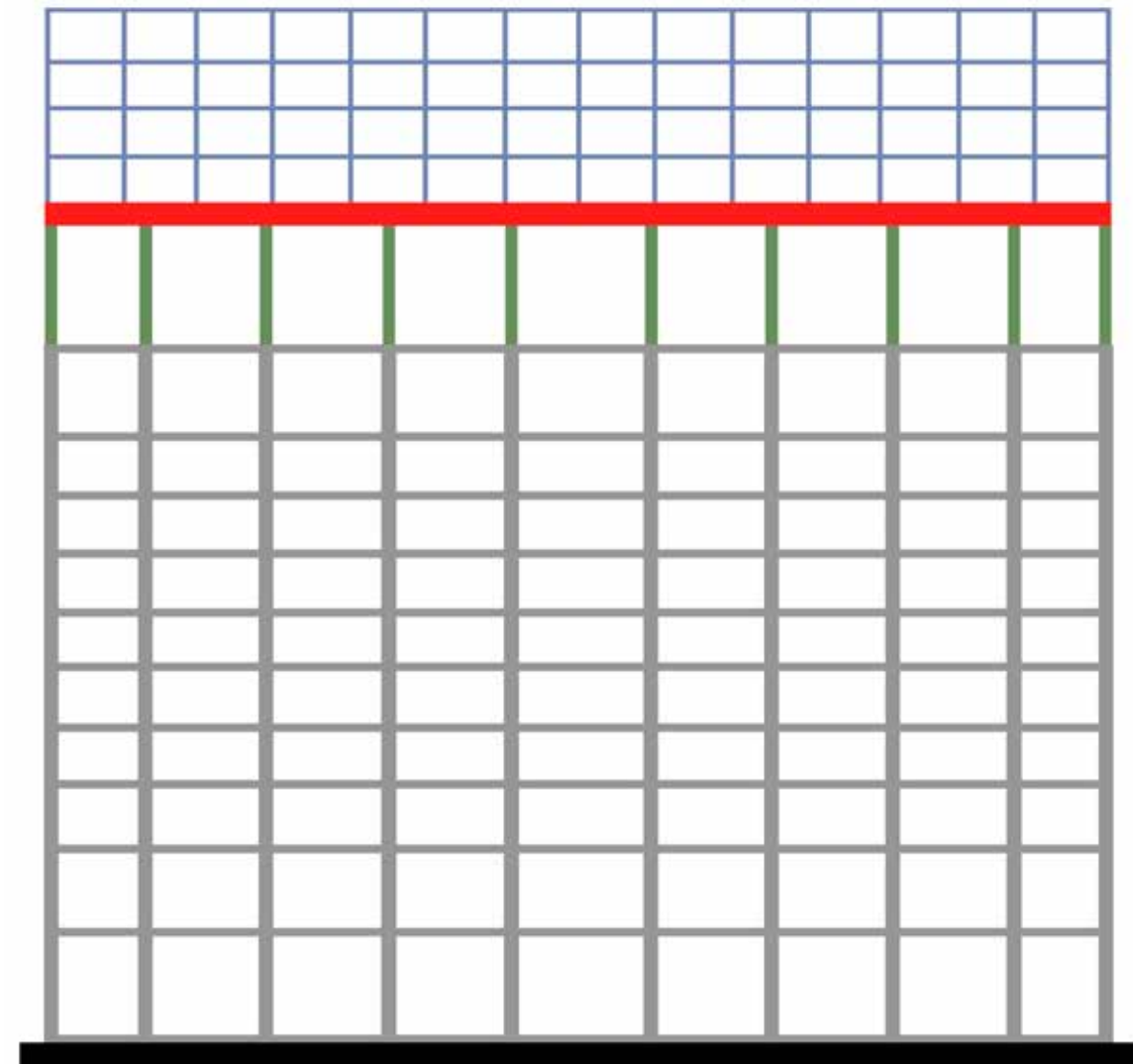
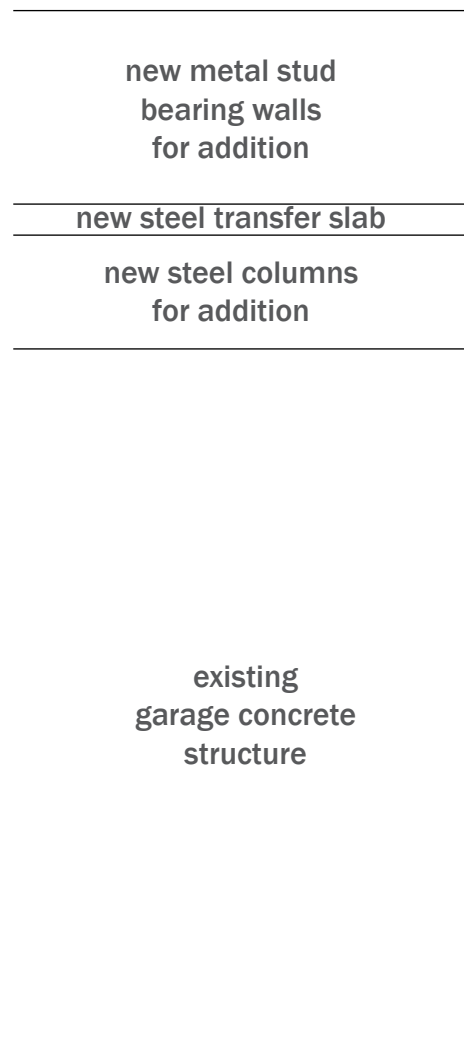
different



similar - vertical

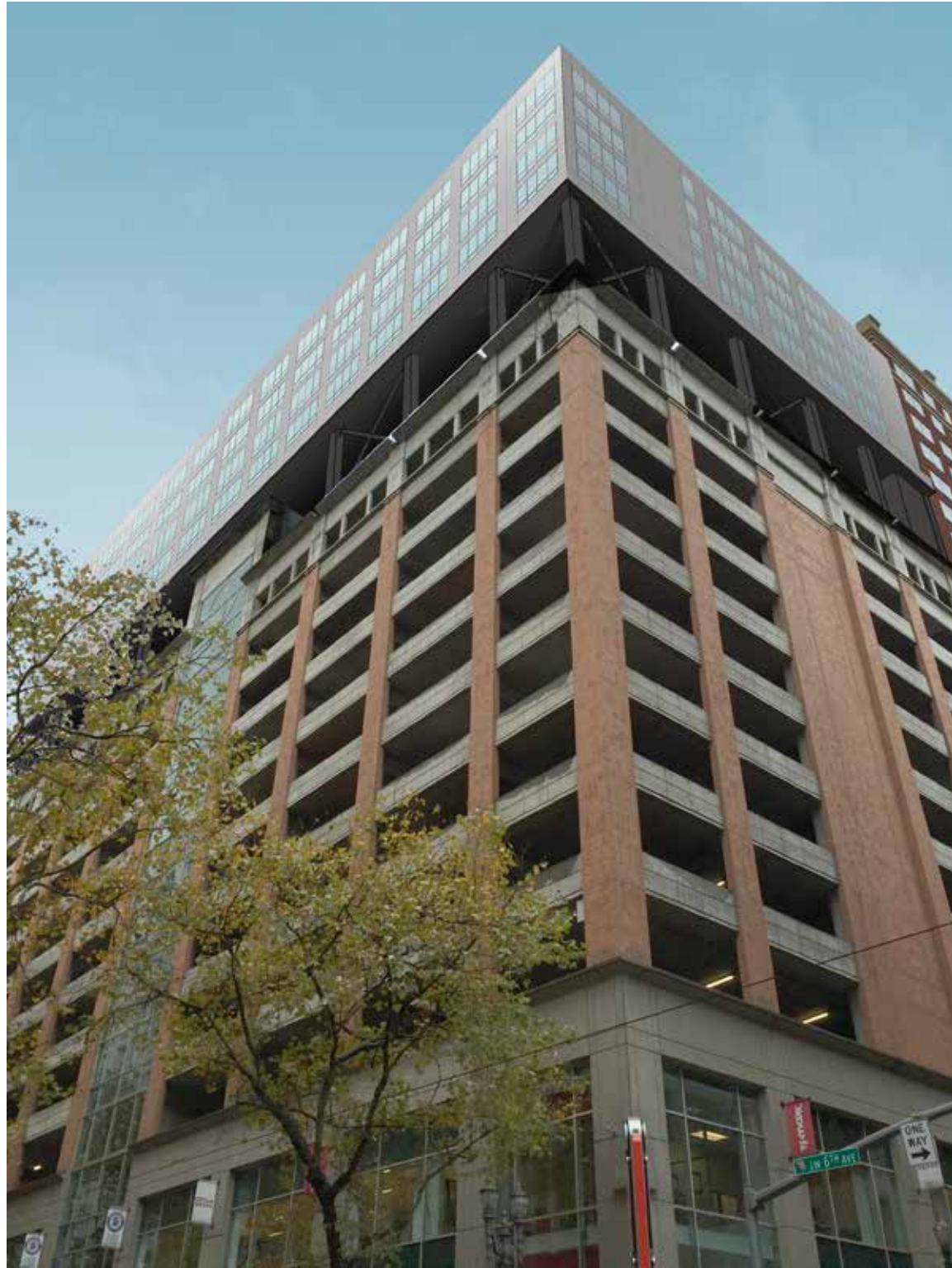


existing building structural diagram

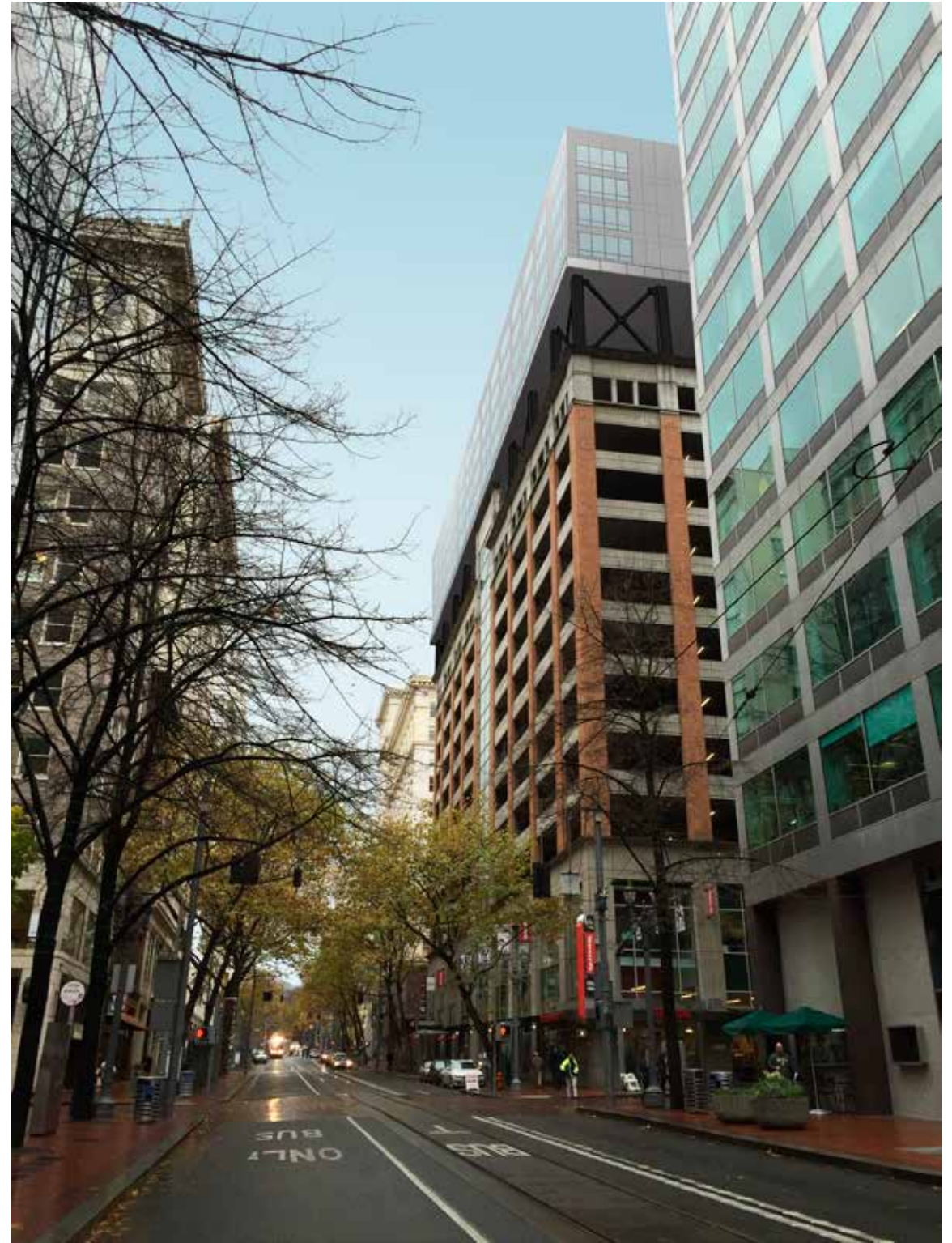


structural diagram with addition



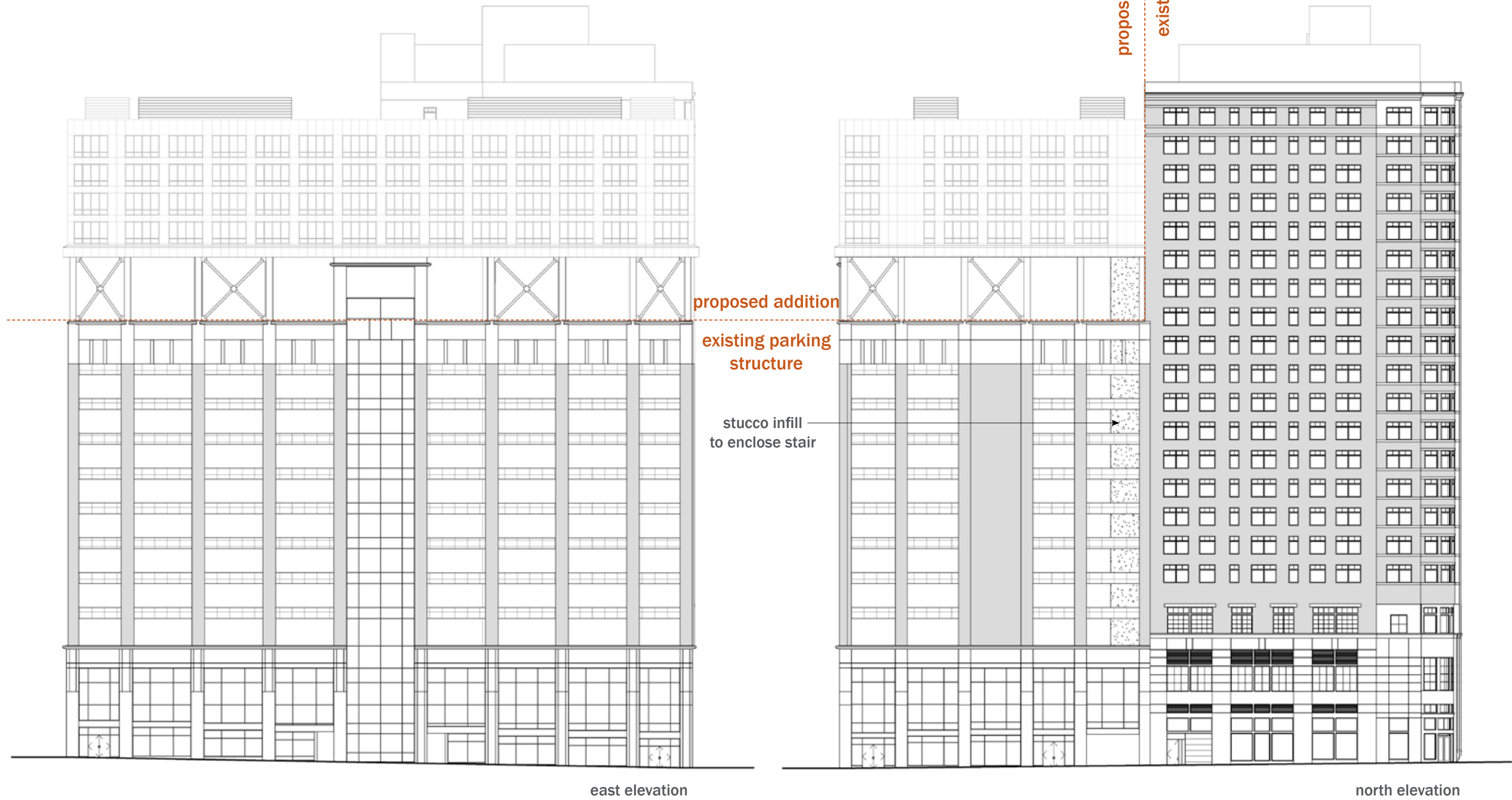


view from corner of sw 6th and washington



view from north

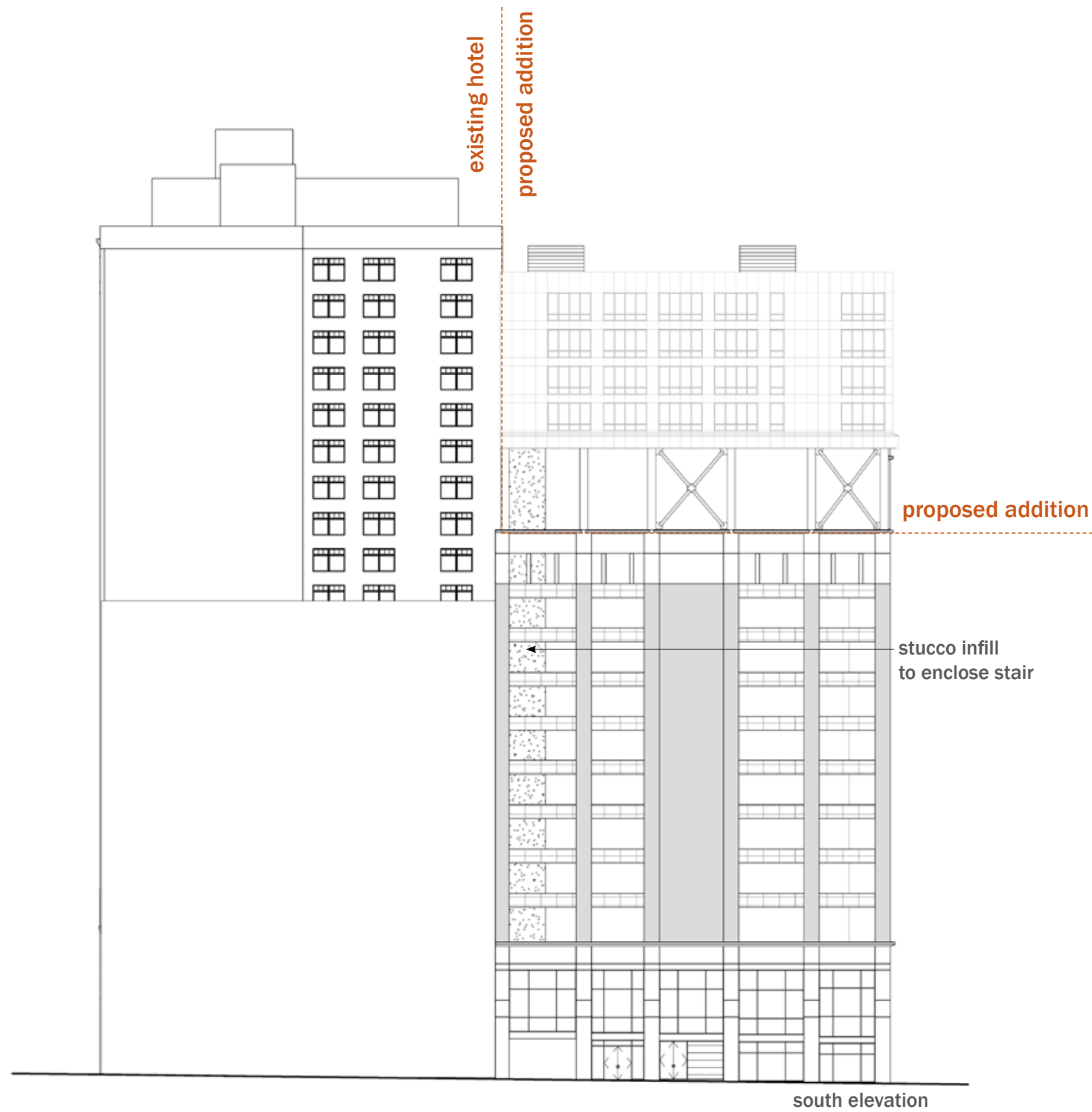
OPTION 1



east elevation

north elevation

OPTION 1



OPTION 1



OPTION 1

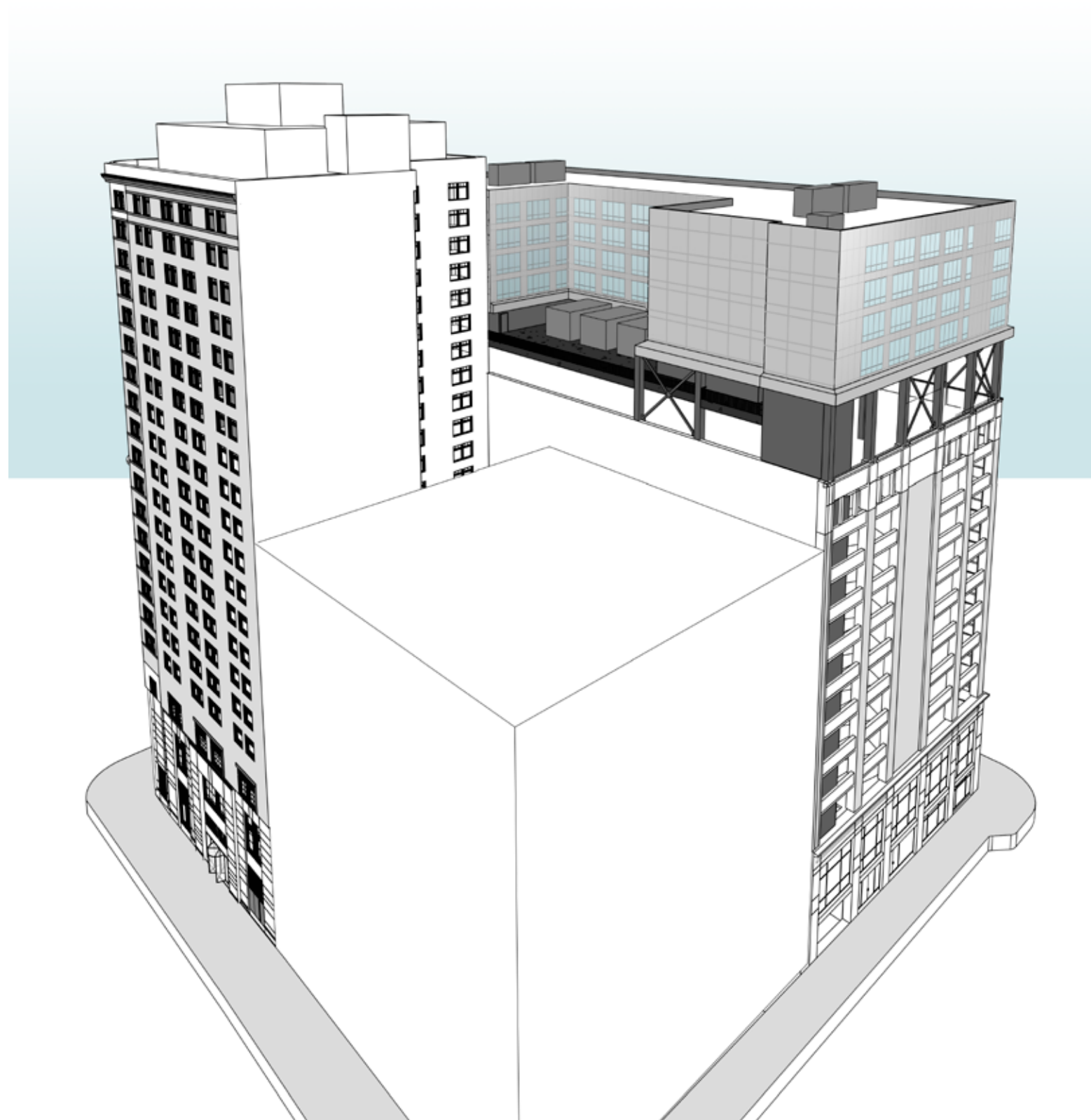


OPTION 1

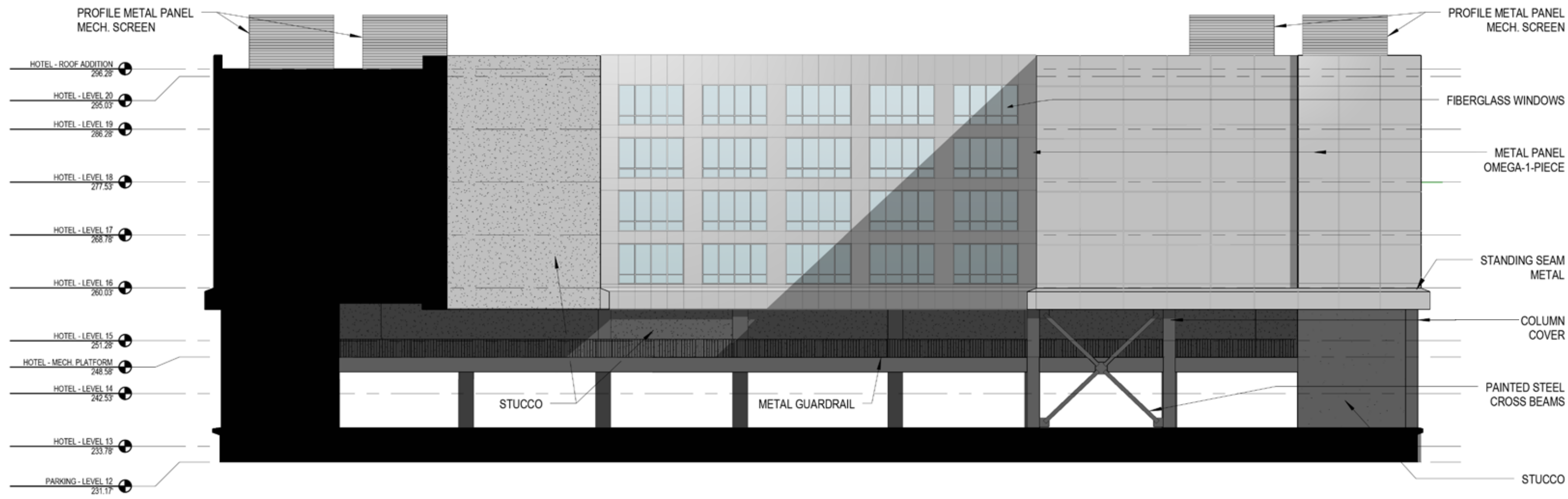


OPTION 1





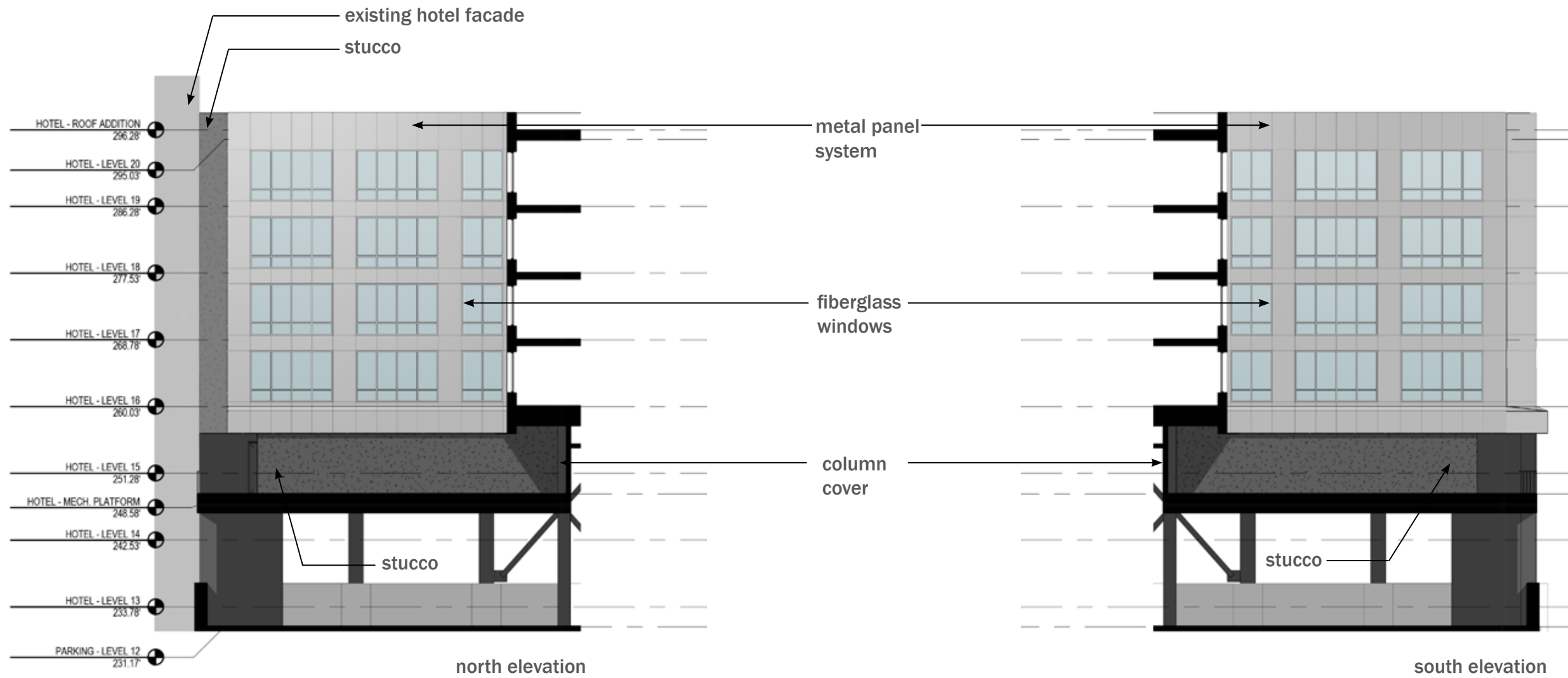
OPTION 1



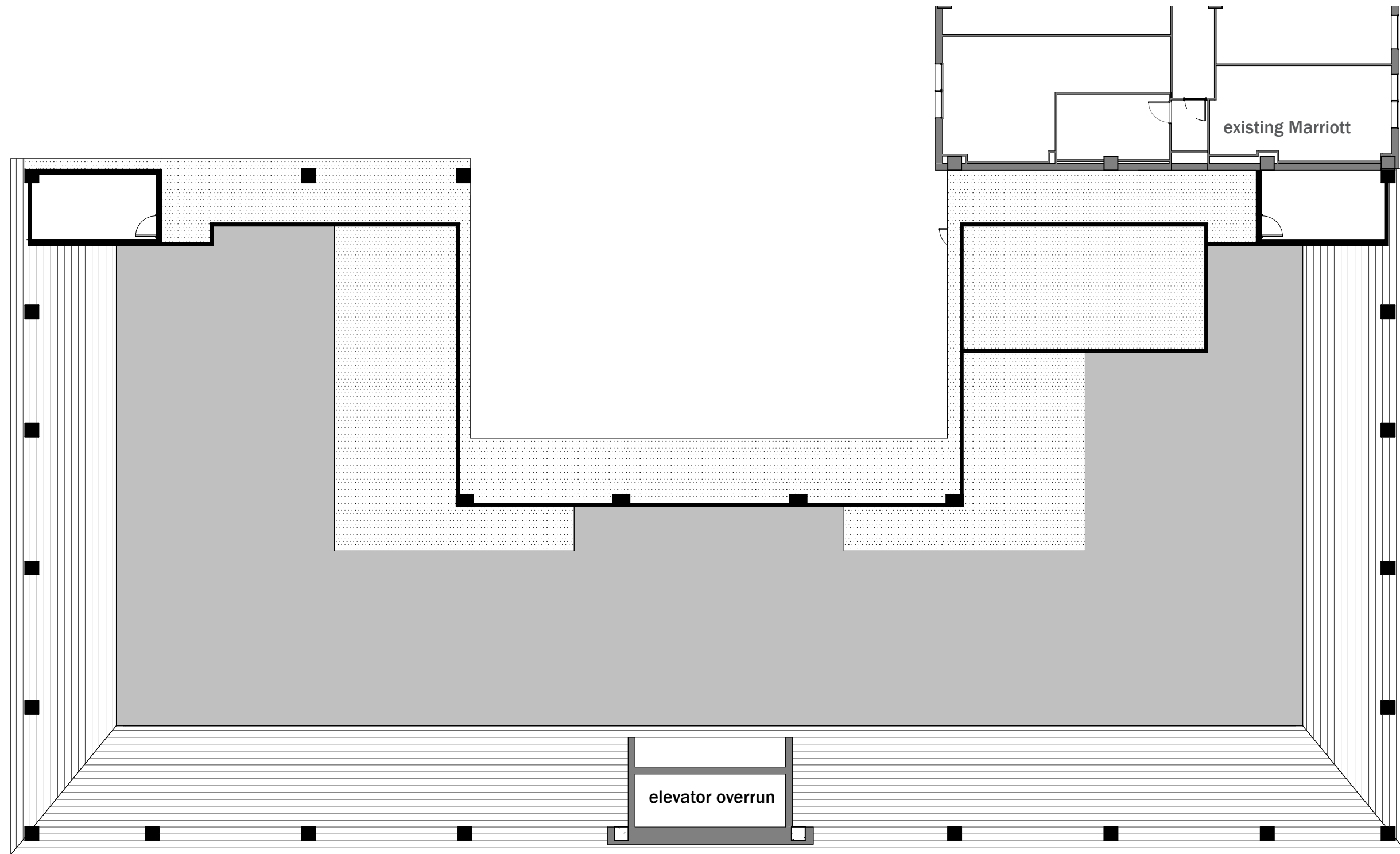
OPTION 1

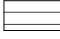

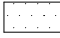


courtyard west elevation

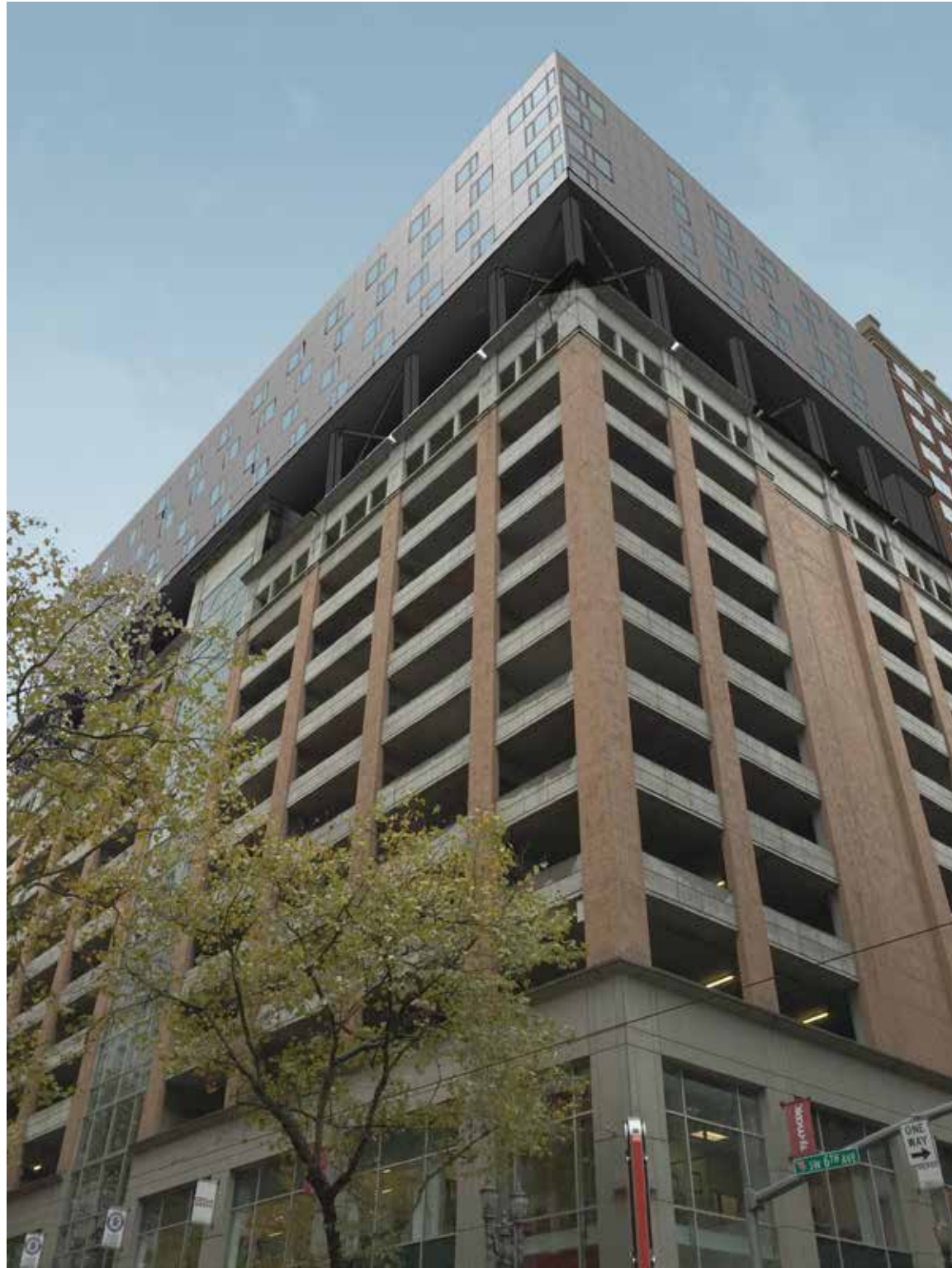


OPTION 1

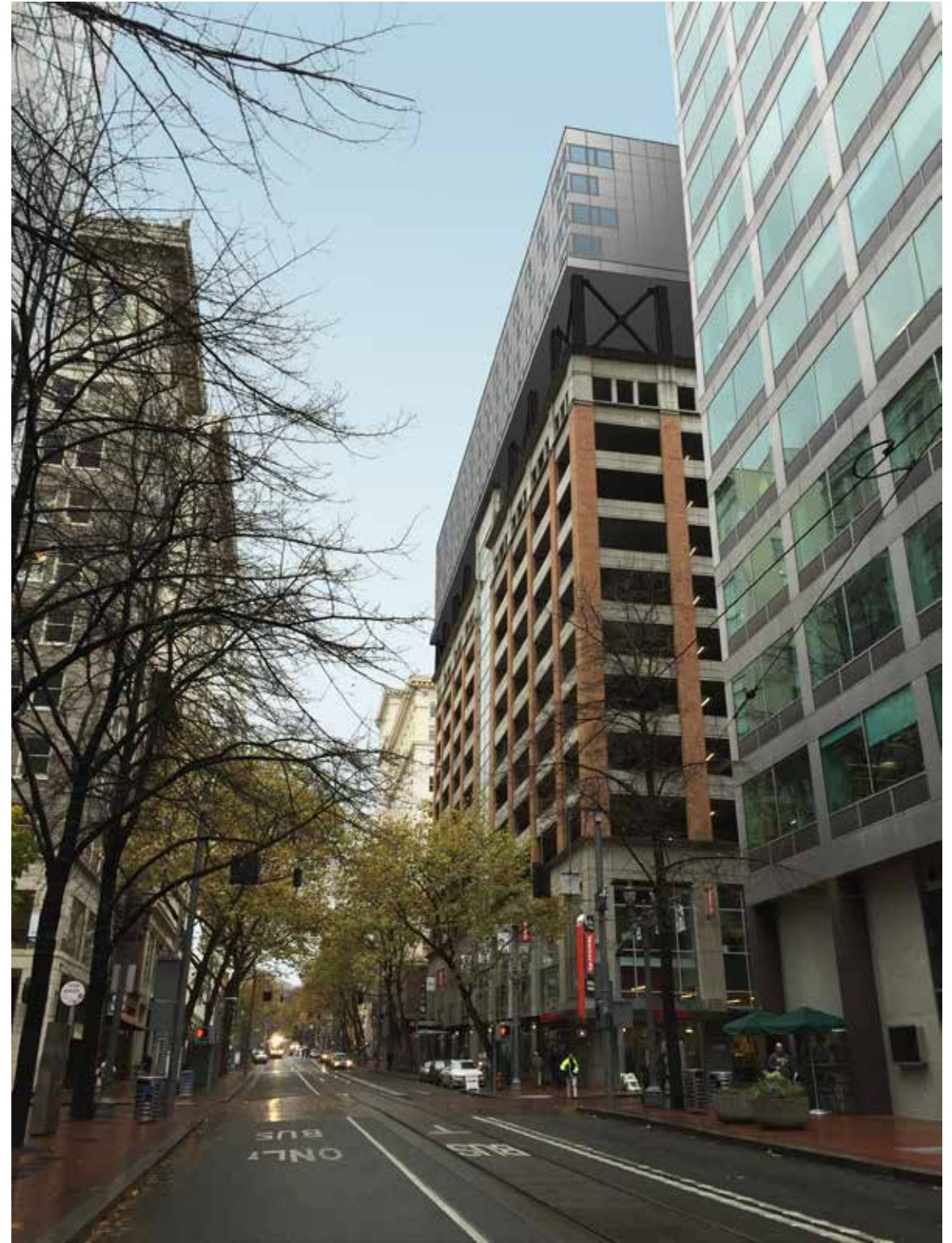


-  aep span 12" flush panel
-  2 hr gyp. board enclosure
-  stick pin insulation

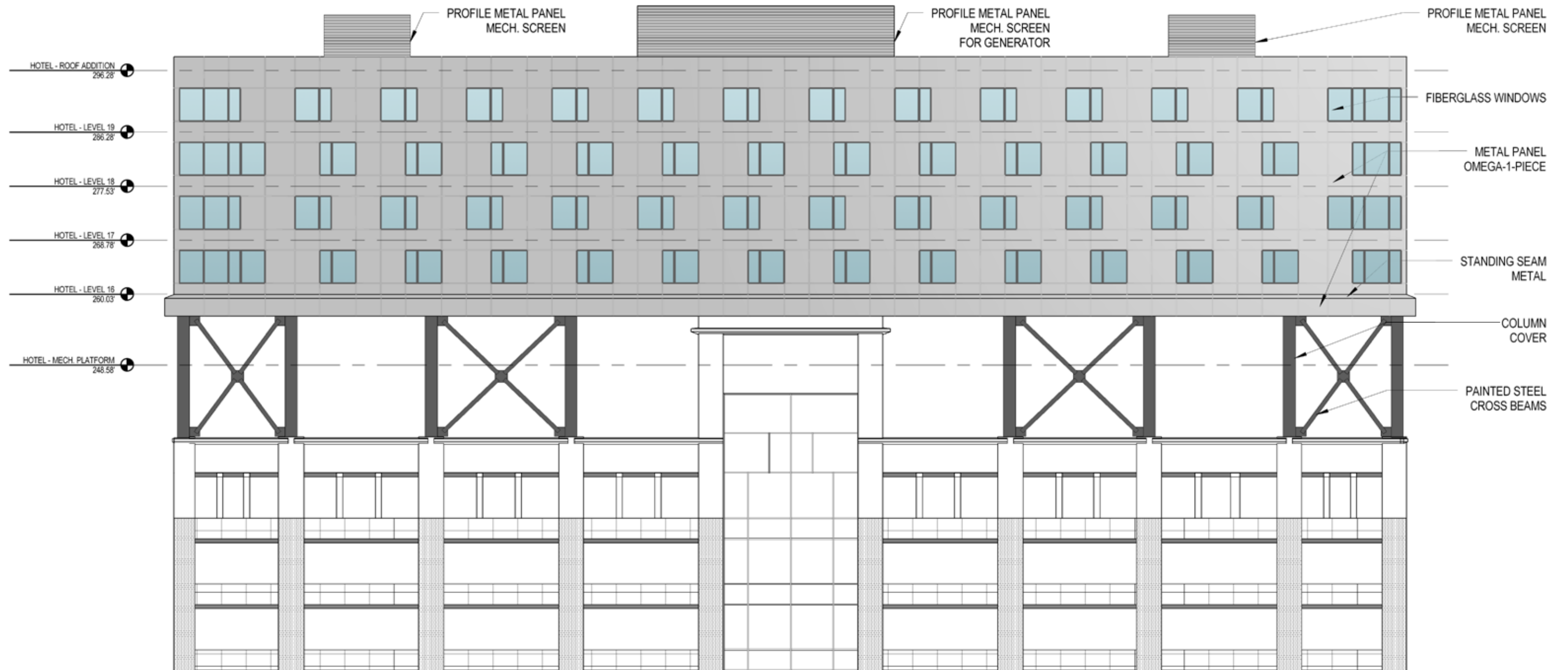
OPTION 1



view from corner of sw 6th and washington



view from north



OPTION 2



OPTION 2



OPTION 2





Omega 1-Piece Metal Panel



cross bracing



stucco



column cover



fiberglass windows



flush panel soffit

Building Summary			
Floor	Existing Keys	New Keys	New SF
Level 1			
Level 2			
Level 3			
Level 4	5		
Level 5	15		
Level 6	15		
Level 7	15		
Level 8	15		
Level 9	15		
Level 10	15		
Level 11	15		
Level 12	15		
Level 13	15		
Level 14	15		
Level 15	15		1,105
Level 16	15	29	16,393
Level 17	15	33	16,393
Level 18	15	33	16,363
Level 19	15	32	16,363
Level 20	9		
Total	239	127	66,617
Total keys with addition			366

addition

A transfer of FAR, (18,000sf +/-) will be required to achieve the FAR Bonus for the site.